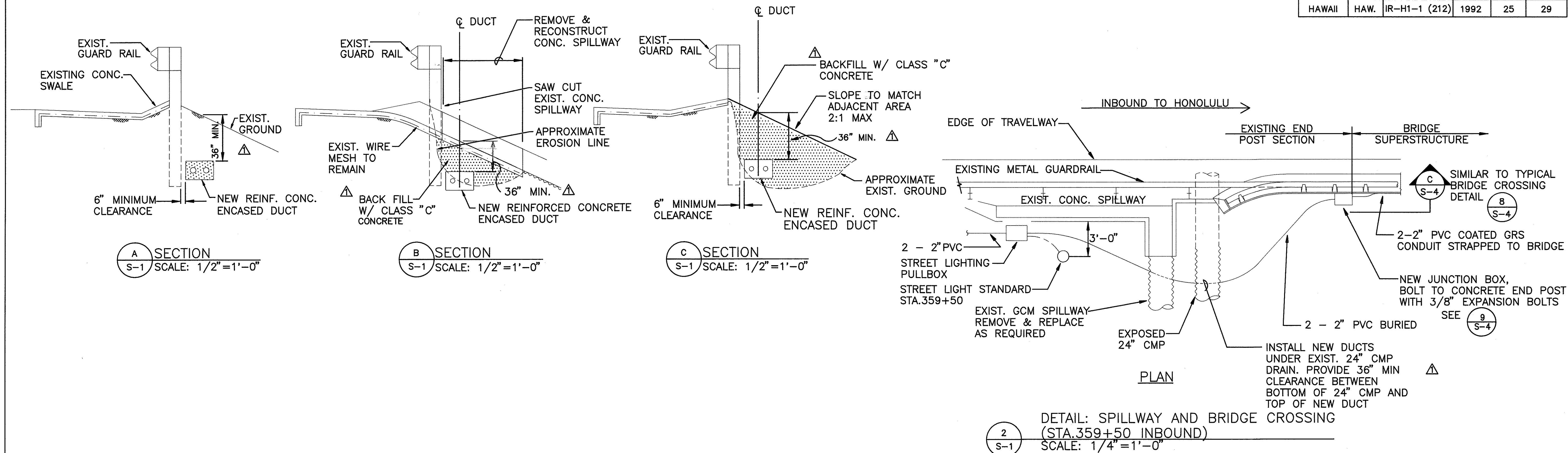
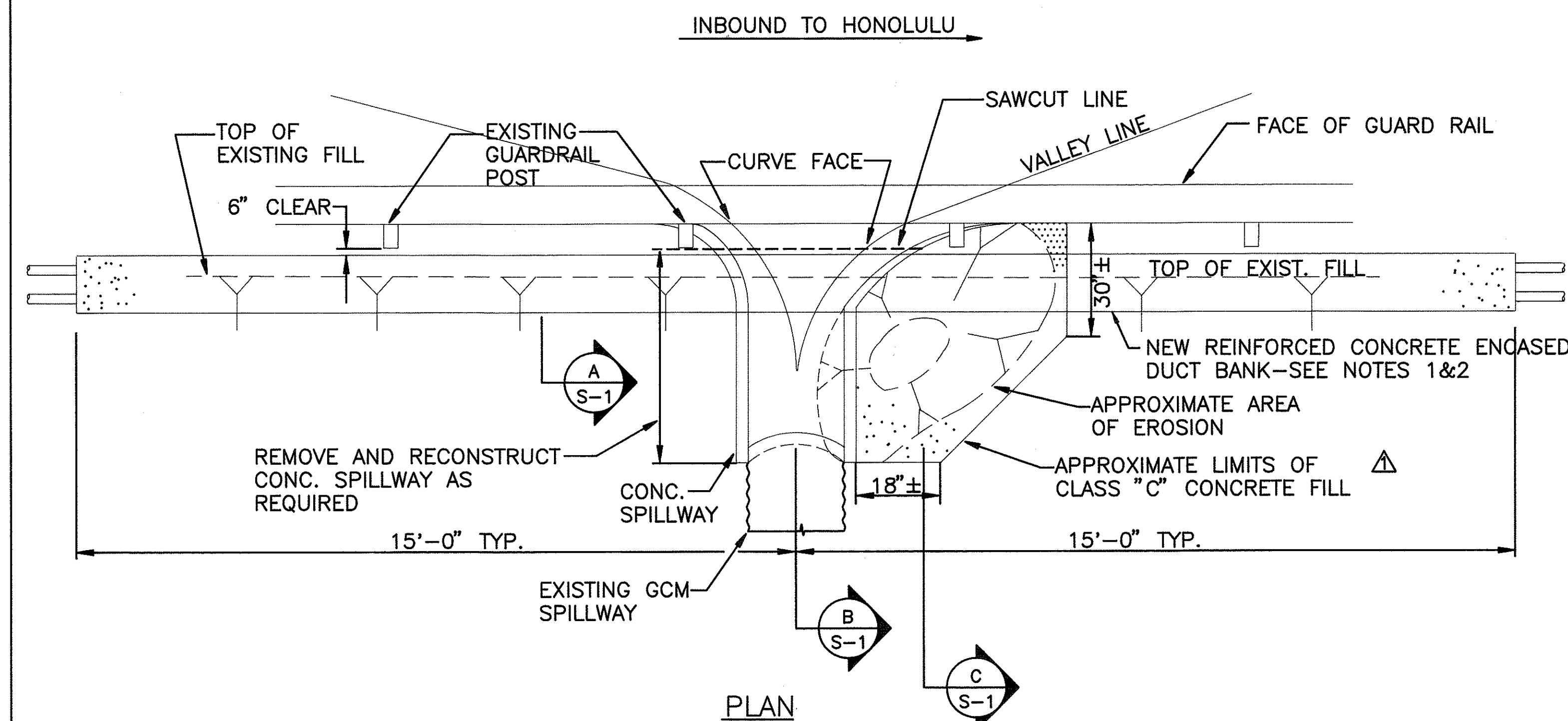


FED. ROAD DIST. No.	STATE	FED. AID PROJ. No.	FISCAL YEAR	SHEET No.	TOTAL SHEETS
HAWAII	HAW.	IR-H1-1 (212)	1992	25	29



PLAN

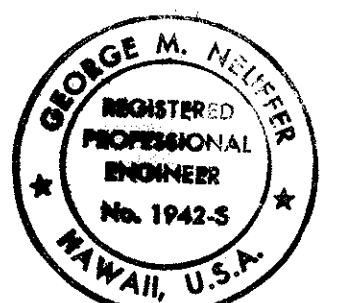
DETAIL: SPILLWAY AND BRIDGE CROSSING
(STA.359+50 INBOUND)
SCALE: 1/4"=1'-0"



DETAIL: CONCRETE SPILLWAY CROSSING
(STA.354+00 INBOUND)
SCALE: 1/2"=1'-0"

NOTES

- FOR DETAIL OF REINFORCED CONCRETE ENCASED DUCT, SEE SHEET E-16.
- NEW REINFORCED CONCRETE JACKET SHALL BE CONSTRUCTED WITH FORMS AND ALLOWED TO CURE A MINIMUM OF 7 DAYS PRIOR TO PLACING CLASS "C" CONCRETE BACKFILL.



THIS WORK WAS PREPARED BY ME
OR UNDER MY SUPERVISION
George M. Neuffer

S-1

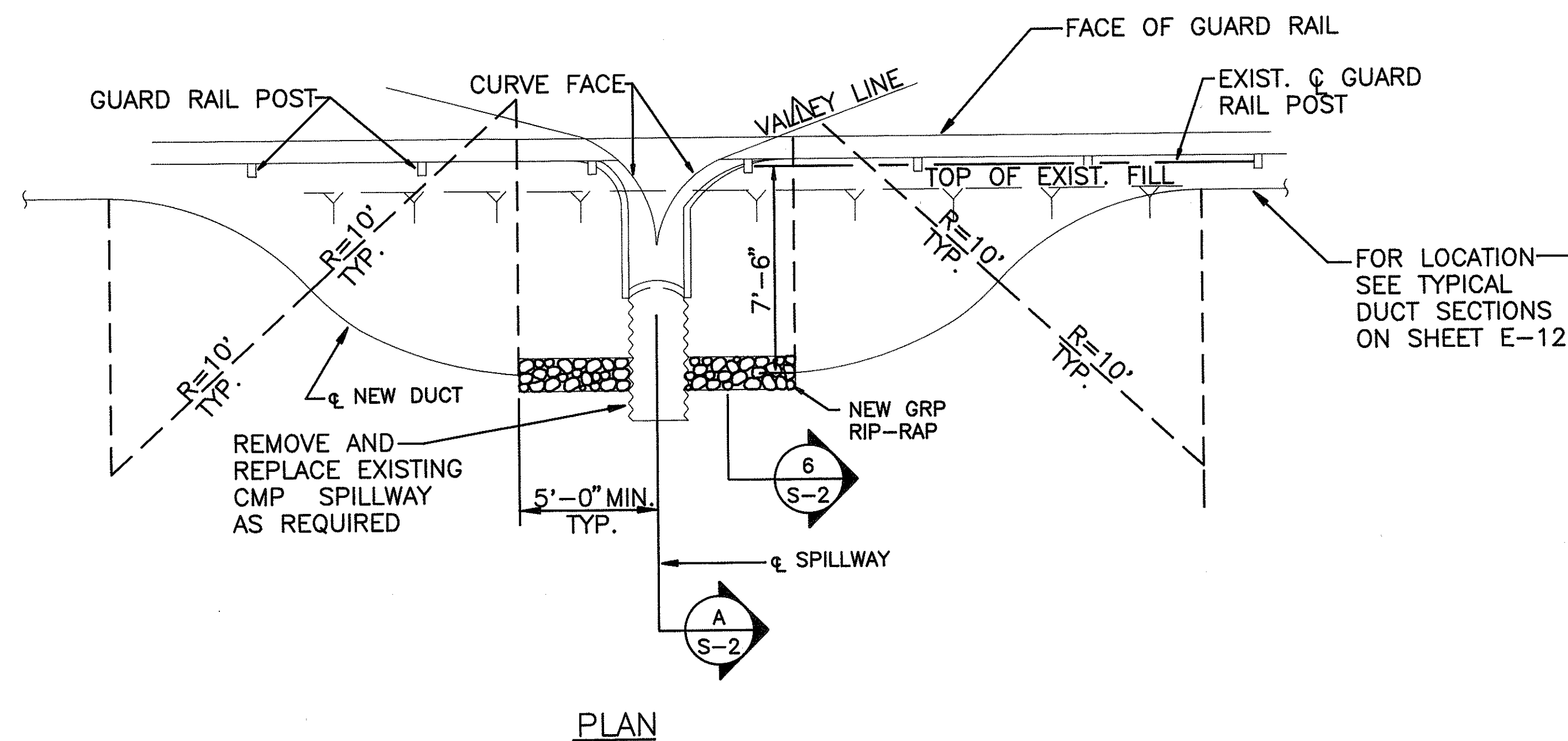
DVM JOB No.: 89104
CAD FILE No.: 89104S1-B

7/6/92	REVISION
DATE	REVISION

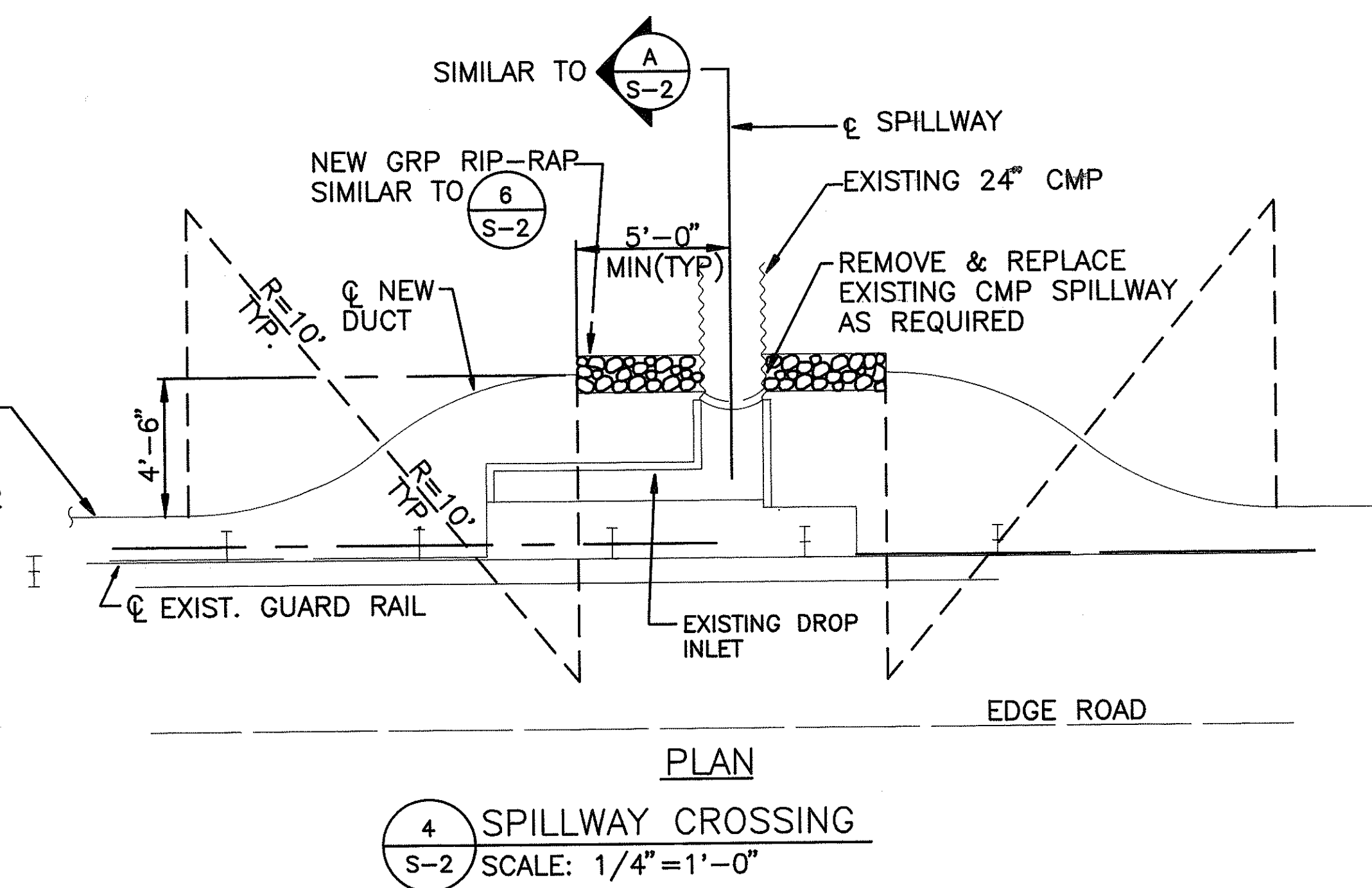
STATE OF HAWAII DEPARTMENT OF TRANSPORTATION HIGHWAYS DIVISION SPILLWAY AND BRIDGE CROSSING DETAILS INTERSTATE ROUTE H-1 KUNIA I.C. TO WAIAWA I.C. PROJECT No. IR-H1-1(212) SCALE: AS NOTED SHEET No. 1 OF 5 SHEETS
--

ADD. 25

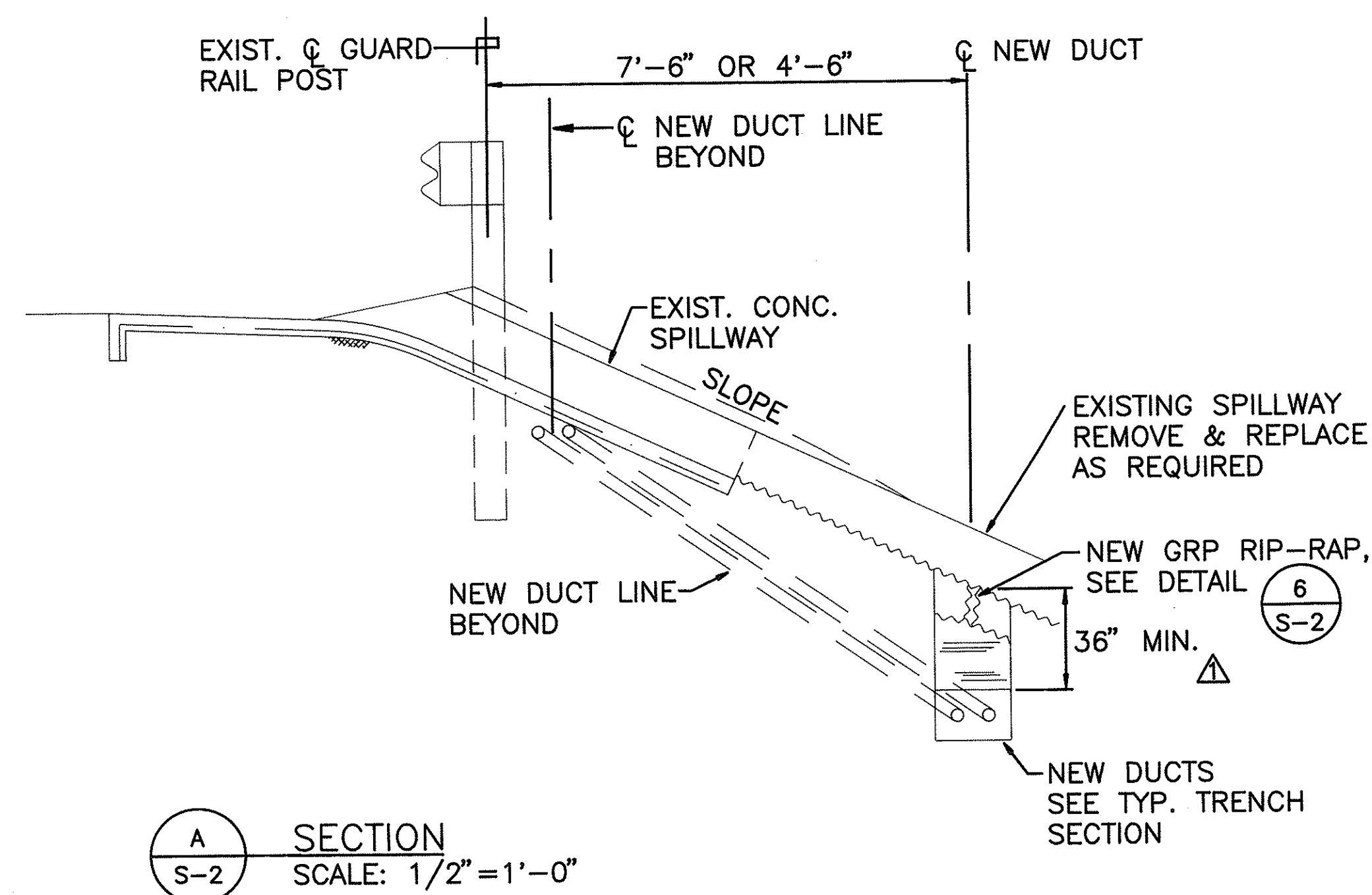
FED. ROAD DIST. No.	STATE	FED. AID PROJ. No.	FISCAL YEAR	SHEET No.	TOTAL SHEETS
HAWAII	HAW.	IR-H1-1 (212)	1992	26	29



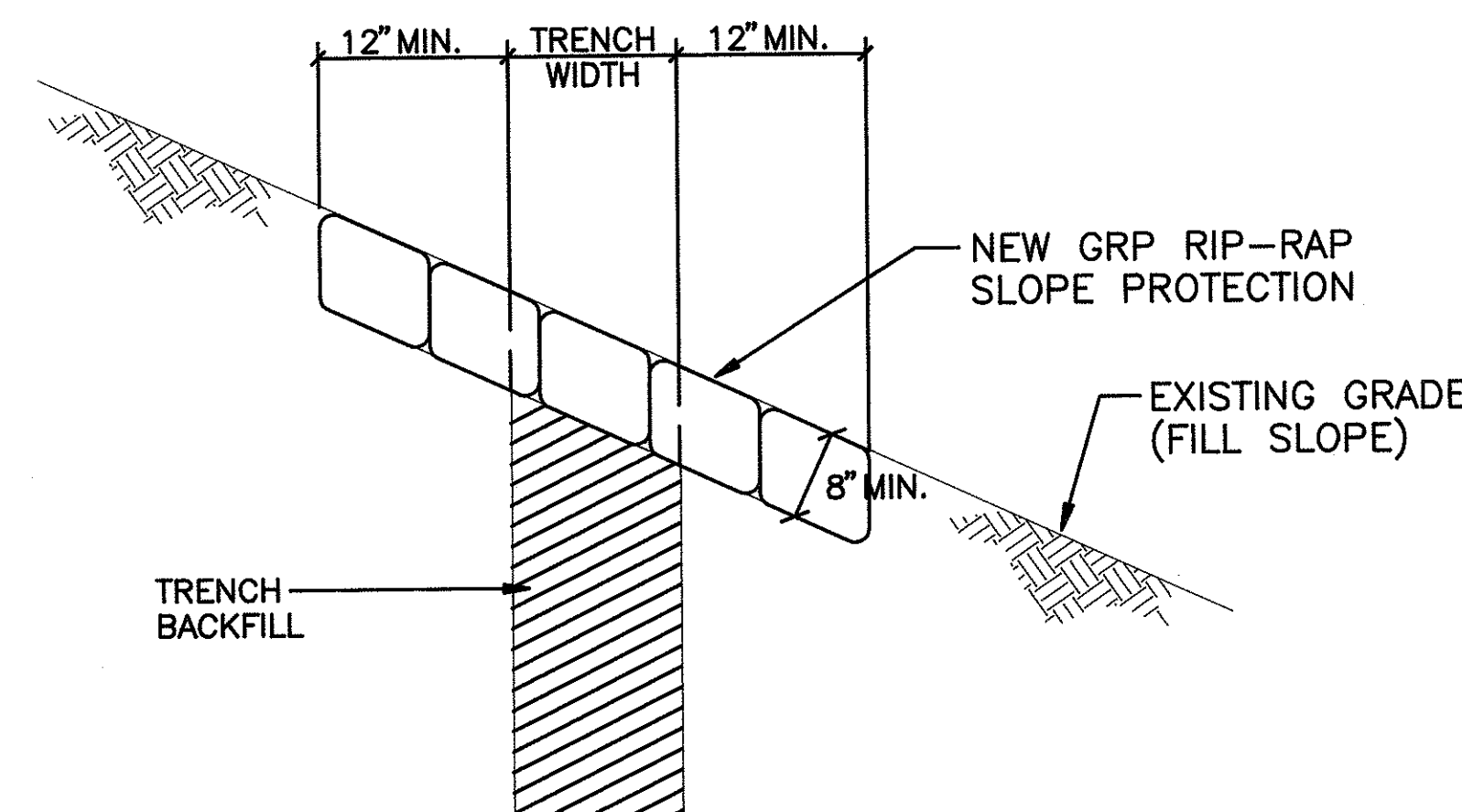
3 TYPICAL SPILLWAY CROSSING
S-2 SCALE: 1/4"=1'-0"



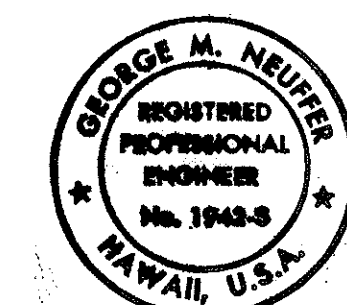
4 SPILLWAY CROSSING
S-2 SCALE: 1/4"=1'-0"



A SECTION
S-2 SCALE: 1/2"=1'-0"



6 SECTION: GRP RIP-RAP DETAIL
S-2 SCALE: 1/4"=1'-0"



THIS WORK WAS PREPARED BY ME
OR UNDER MY SUPERVISION
George M. Neufus

S-2

DVM JOB No.: 89104
CAD FILE No.: 89104S2-B

7/6/92 Δ REVISE BURIAL DEPTH TO 36".

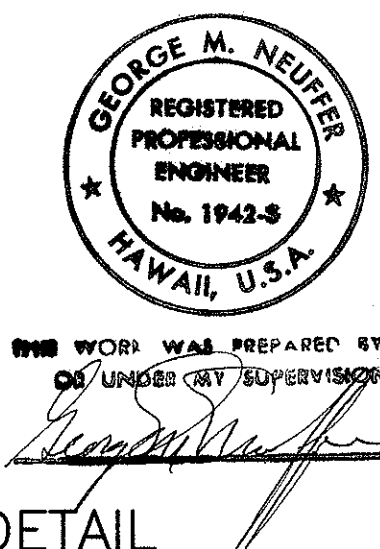
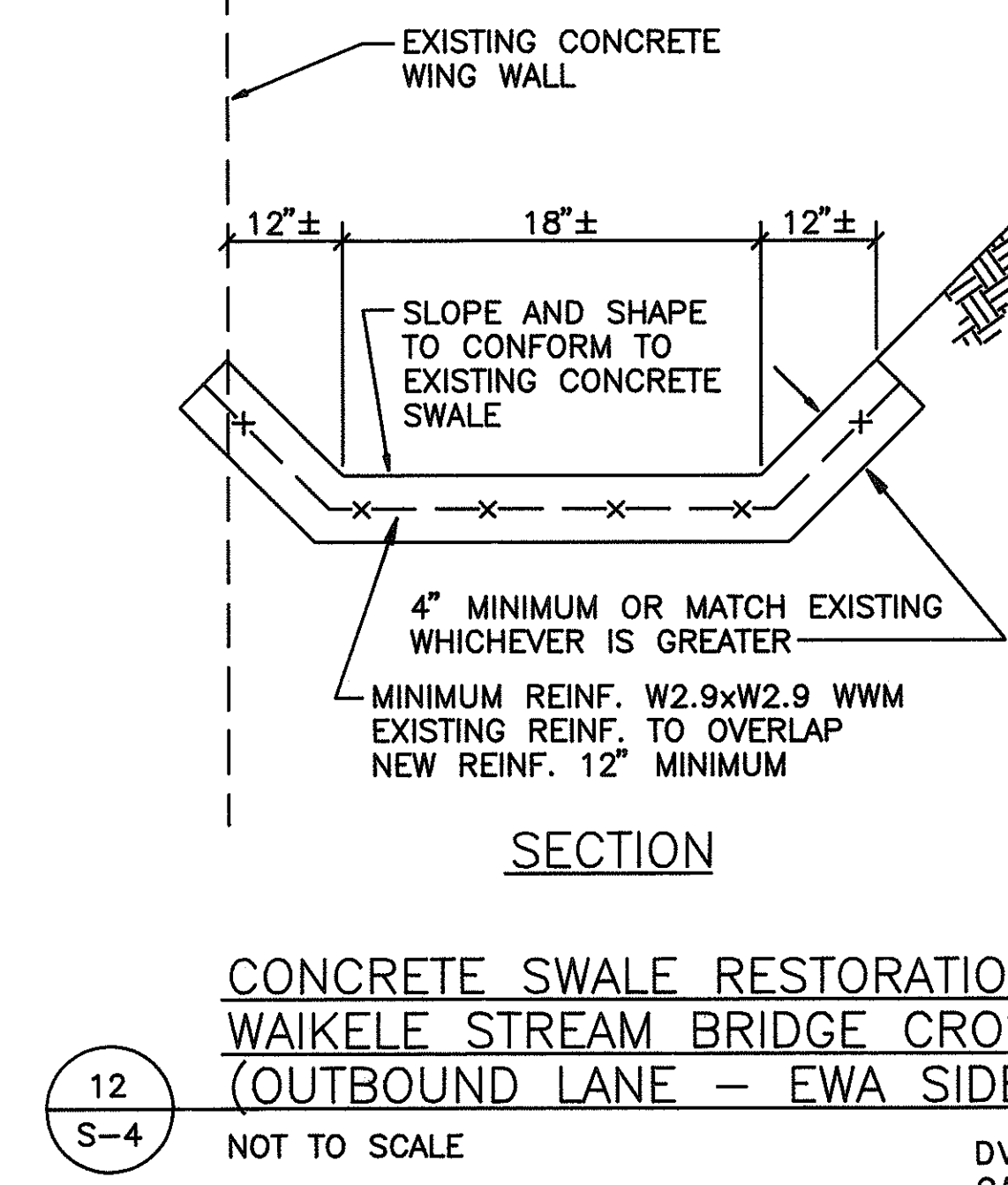
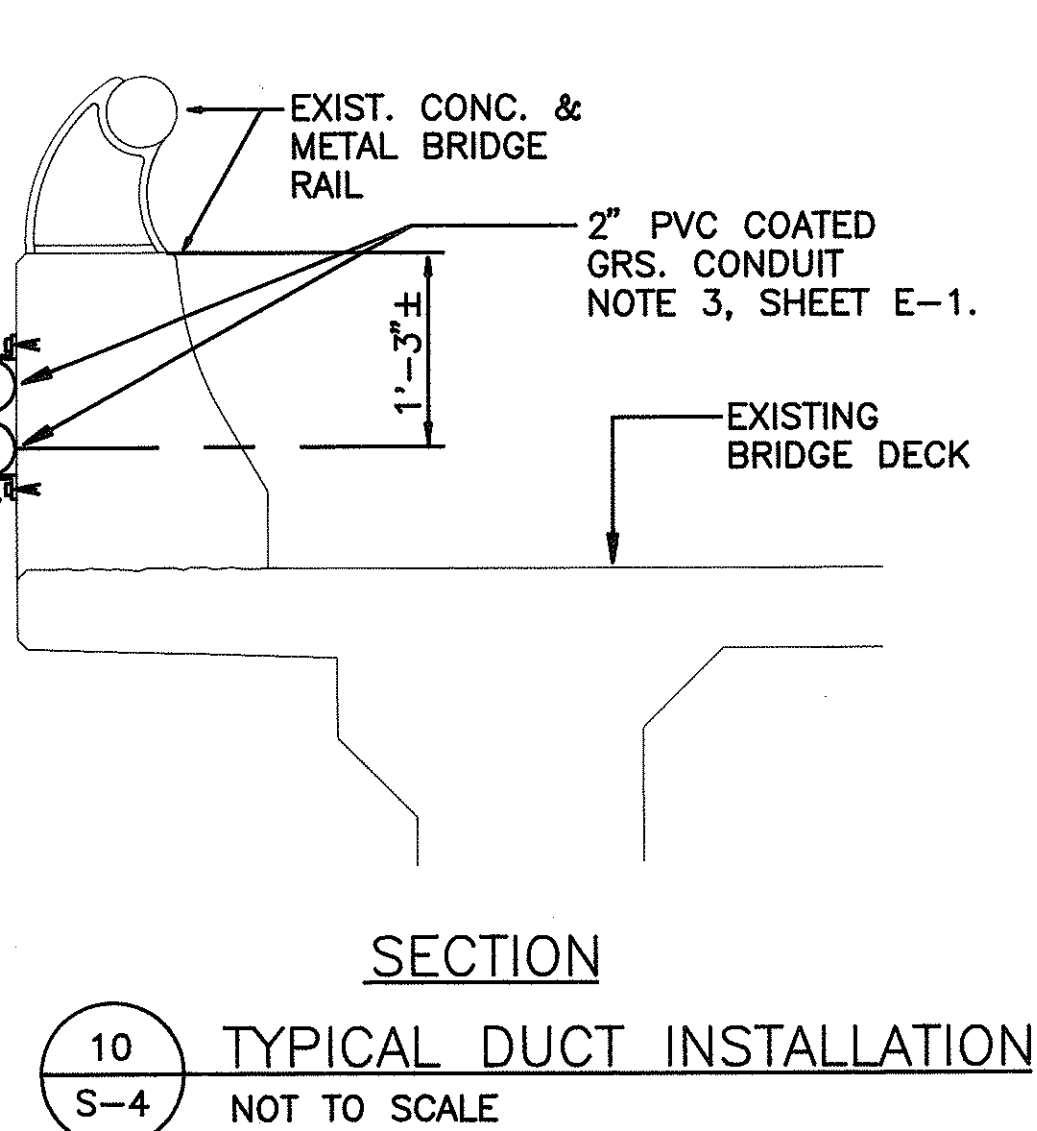
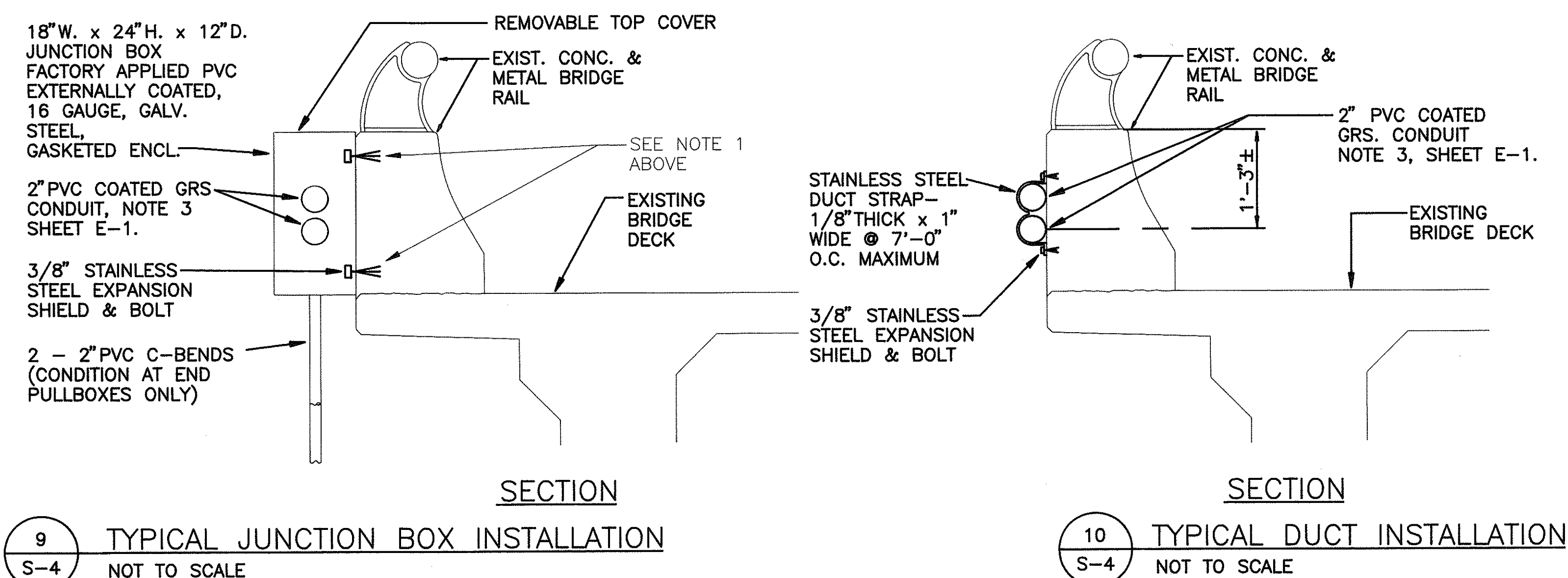
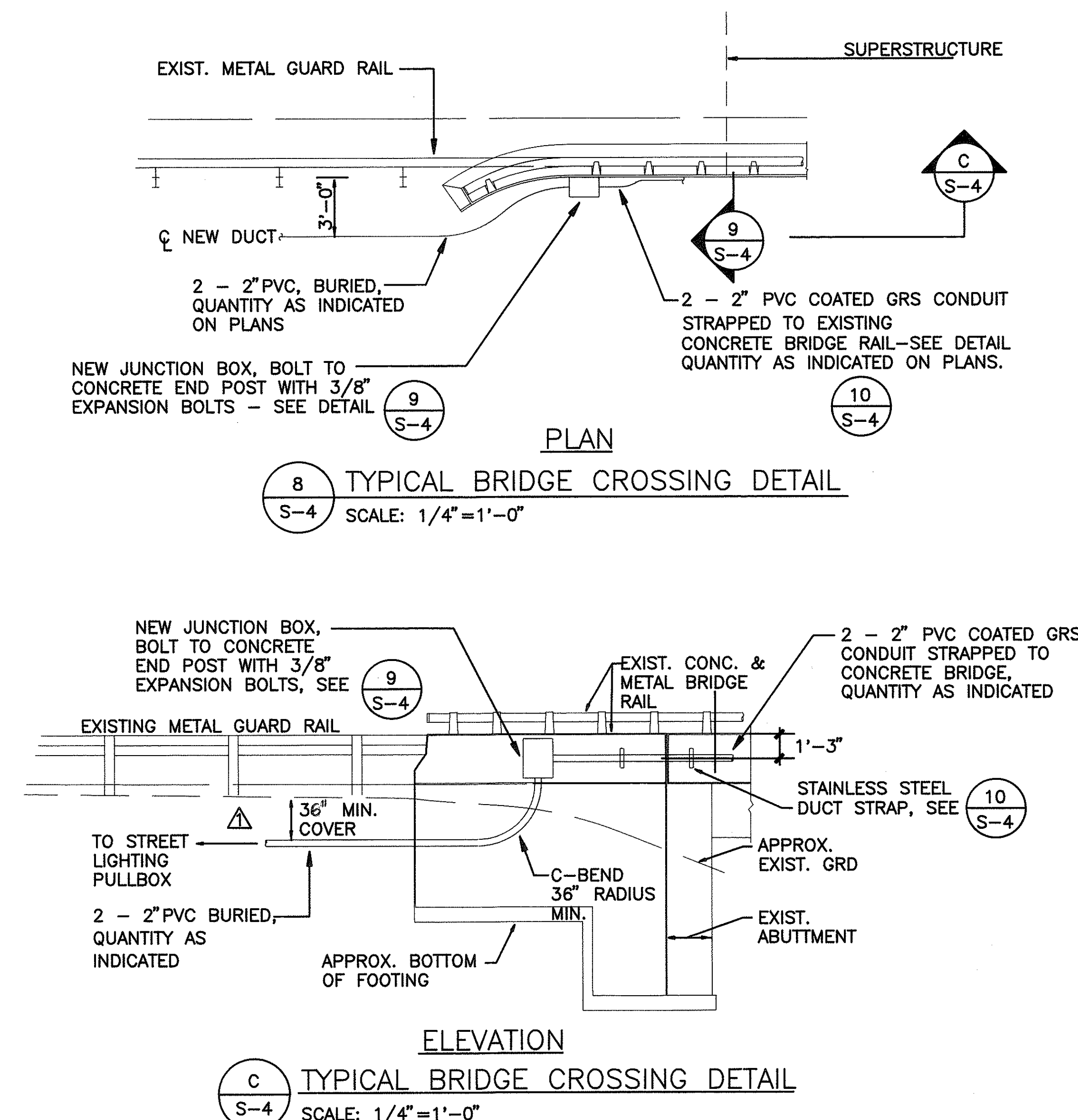
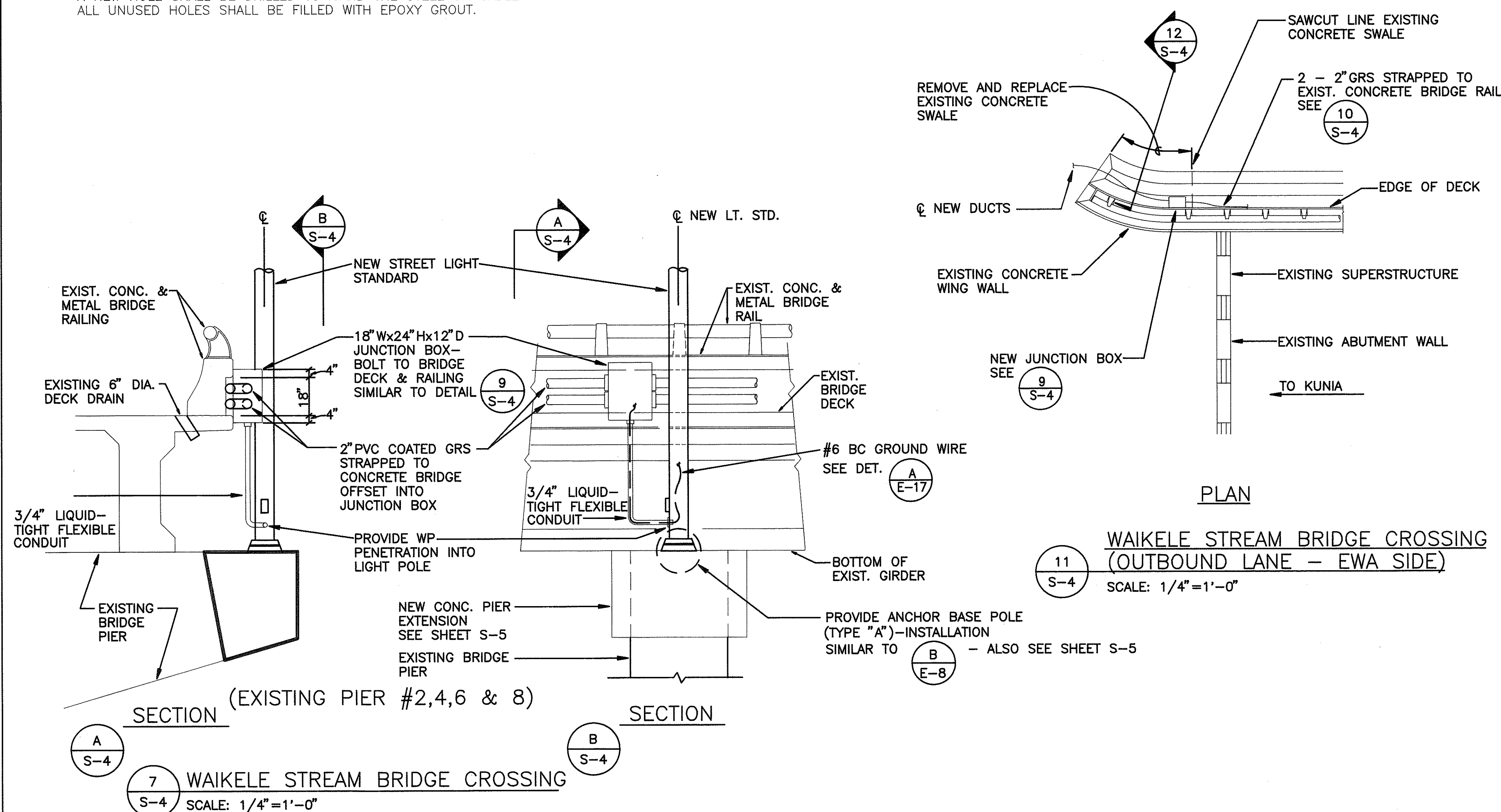
DATE REVISION

STATE OF HAWAII DEPARTMENT OF TRANSPORTATION HIGHWAYS DIVISION
SPILLWAY AND BRIDGE CROSSING
DETAILS
INTERSTATE ROUTE H-1 KUNIA I.C. TO WAIAWA I.C. PROJECT No. IR-H1-1(212)
SCALE: AS NOTED
SHEET No. 2 OF 5 SHEETS

ADD. 26

NOTE:

1. USE EXTREME CAUTION WHEN DRILLING BRIDGE STRUCTURE. CARE SHALL BE TAKEN TO AVOID DAMAGING REINFORCING STEEL AND CABLES. IF SUCH STEEL OR CABLES ARE ENCOUNTERED, A NEW HOLE SHALL BE DRILLED TO AVOID THE STEEL OR CABLE. ALL UNUSED HOLES SHALL BE FILLED WITH EPOXY GROUT.



07/06/92	REVISE BURIAL DEPTH TO 36"
DATE	REVISION

STATE OF HAWAII DEPARTMENT OF TRANSPORTATION HIGHWAYS DIVISION	
BRIDGE CROSSING DETAILS	
INTERSTATE ROUTE H-1 KUNIA I.C. TO WAIAWA I.C.	
PROJECT No. IR-H1-1(212)	
SCALE: AS NOTED	
SHEET No. 4 OF 5 SHEETS	