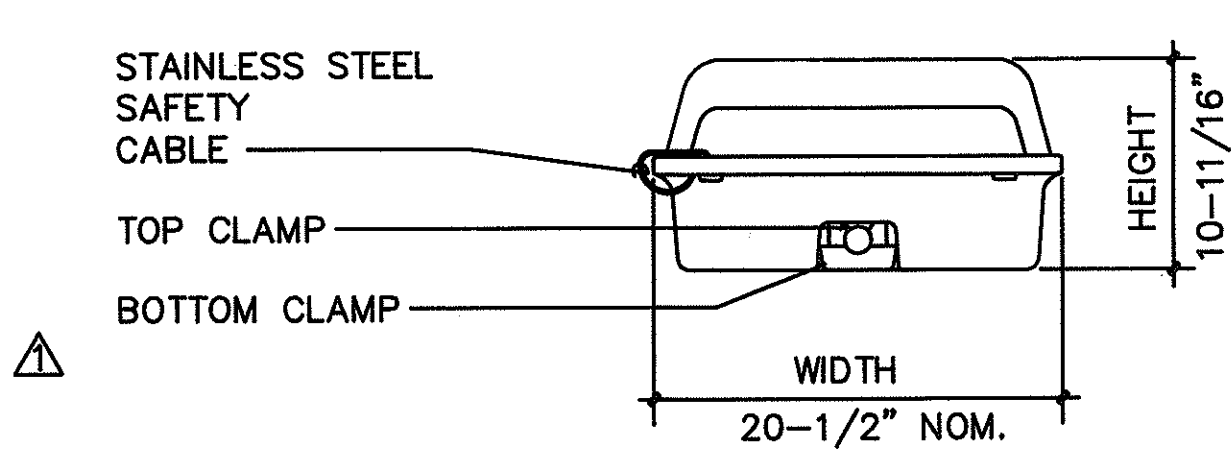


FED. ROAD DIST. No.	STATE	FED. AID PROJ. No.	FISCAL YEAR	SHEET No.	TOTAL SHEETS
HAWAII	HAW.	IR-H1-1 (212)	1992	21	29

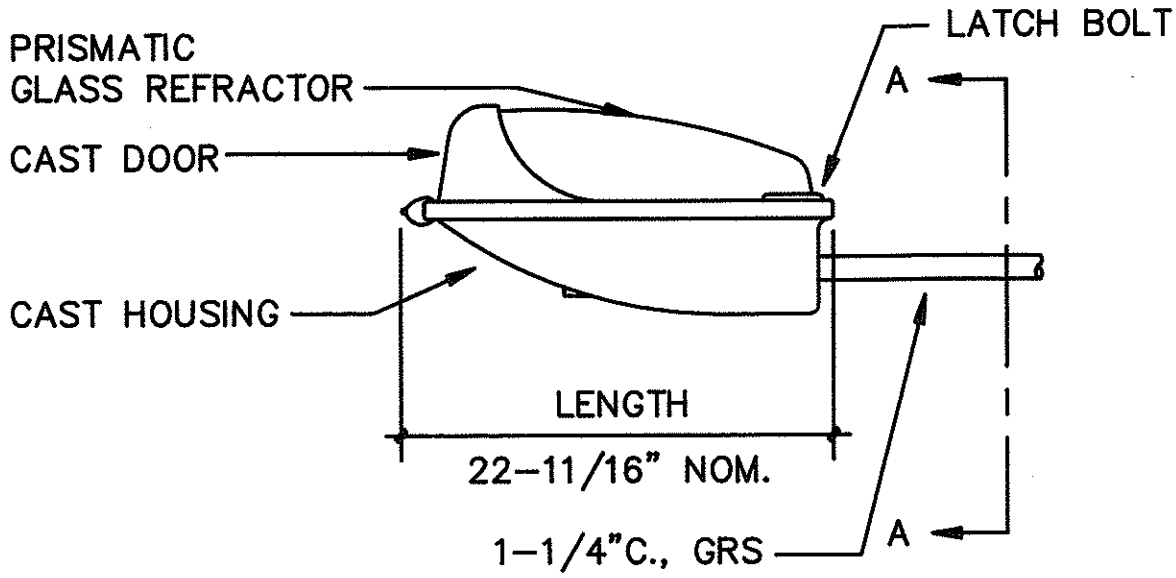
EXISTING HIGHWAY SIGN SCHEDULE					
SIGN NO. AS SHOWN ON PLAN	LOCATION	STATION NO.	SHEET NO.	EXISTING CONDITIONS	REMARKS
SIGN NO. 1	OUTBOUND TO EWA	359+50	E-2	GROUND MOUNTED SIGN.  NO EXISTING LIGHTS.	1. NO EXISTING SIGN LUMINAIRES 2. PROVIDE NEW JUNCTION BOX AT BASE OF SIGN POST. 3. PROVIDE NEW SIGN LUMINAIRES, BALLASTS AND ENCLOSURES, LUMINAIRE SUPPORTS, CONDUITS, JUNCTION BOXES AND CONDUCTORS AS INDICATED.
SIGN NO. 2	OUTBOUND TO EWA	370+50	E-2	GROUND MOUNTED SIGN.  NO EXISTING LIGHTS.	1. NO EXISTING SIGN LUMINAIRES 2. PROVIDE NEW JUNCTION BOX AT BASE OF SIGN POST. 3. PROVIDE NEW SIGN LUMINAIRES, BALLASTS AND ENCLOSURES, LUMINAIRE SUPPORTS, CONDUITS, JUNCTION BOXES AND CONDUCTORS AS INDICATED.
SIGN NO. 3	INBOUND TO HONOLULU	452+00	E-5	OVERHEAD MOUNTED SIGN.  EXISTING FLUORESCENT FIXTURES	1. DISCONNECT EXISTING FLUORESCENT FIXTURES, BALLAST ENCLOSURES, CONDUITS AND WIRE SERVING LIGHT FIXTURES. REMOVE EXISTING LUMINAIRE SUPPORT SYSTEM STRUCTURE. 2. PROVIDE NEW JUNCTION BOX AT BASE OF SIGN POST. 3. PROVIDE NEW SIGN LUMINAIRES, BALLASTS AND ENCLOSURES, LUMINAIRE SUPPORTS, CONDUITS, JUNCTION BOXES AND CONDUCTORS AS INDICATED.
SIGN NO. 4	OUTBOUND TO EWA	458+50	E-5	GROUND MOUNTED SIGN.  EXISTING FLUORESCENT FIXTURES	1. DISCONNECT AND REMOVE EXISTING: FLUORESCENT FIXTURES, BALLAST ENCLOSURE, JUNCTION BOX MTD. AT +12" A.F.F. ON SIGN POST, CONDUITS AND WIRE SERVING LIGHT FIXTURES. REMOVE EXISTING LUMINAIRE SUPPORT SYSTEM STRUCTURE. 2. PROVIDE NEW: SIGN LUMINAIRES, BALLASTS AND ENCLOSURES, JUNCTION BOX AT +12" A.F.F. ON SIGN POST, LUMINAIRE SUPPORTS, CONDUITS, JUNCTION BOXES AND CONDUCTORS AS INDICATED.
SIGN NO. 5	INBOUND TO HONOLULU	409+00	E-4	GROUND MOUNTED SIGN.  NO EXISTING LIGHTS.	1. NO EXISTING SIGN LUMINAIRES 2. PROVIDE NEW JUNCTION BOX AT BASE OF SIGN POST. 3. PROVIDE NEW SIGN LUMINAIRES, BALLASTS AND ENCLOSURES, LUMINAIRE SUPPORTS, CONDUITS, JUNCTION BOXES AND CONDUCTORS AS INDICATED.
SIGN NO. 6	INBOUND TO HONOLULU	416+50	E-4A	OVERHEAD MOUNTED SIGN.  EXISTING FLUORESCENT FIXTURES	1. DISCONNECT EXISTING FLUORESCENT FIXTURES, BALLAST ENCLOSURES, CONDUITS AND WIRE SERVING LIGHT FIXTURES. REMOVE EXISTING LUMINAIRE SUPPORT SYSTEM STRUCTURE. 2. PROVIDE NEW JUNCTION BOX AT BASE OF SIGN POST. 3. PROVIDE NEW SIGN LUMINAIRES, BALLASTS AND ENCLOSURES, LUMINAIRE SUPPORTS, CONDUITS, JUNCTION BOXES AND CONDUCTORS AS INDICATED.
SIGN NO. 7	INBOUND TO HONOLULU	430+90	E-4B	GROUND MOUNTED SIGN.  NO EXISTING LIGHTS.	1. NO EXISTING SIGN LUMINAIRES 2. PROVIDE NEW JUNCTION BOX AT BASE OF SIGN POST. 3. PROVIDE NEW SIGN LUMINAIRES, BALLASTS AND ENCLOSURES, LUMINAIRE SUPPORTS, CONDUITS, JUNCTION BOXES AND CONDUCTORS AS INDICATED.
SIGN NO. 8	OUTBOUND TO EWA	445+00	E-2	GROUND MOUNTED SIGN.  NO EXISTING LIGHTS.	1. NO EXISTING SIGN LUMINAIRES 2. PROVIDE NEW JUNCTION BOX AT BASE OF SIGN POST. 3. PROVIDE NEW SIGN LUMINAIRES, BALLASTS AND ENCLOSURES, LUMINAIRE SUPPORTS, CONDUITS, JUNCTION BOXES AND CONDUCTORS AS INDICATED.

NOTES:

1. CONTRACTOR SHALL VERIFY EXISTING CONDITIONS OF ALL GUIDE SIGNS. CONTRACTOR SHALL SUPPLY ALL NECESSARY LUMINAIRE SUPPORTS AS SHOWN ON SHEET E-15. IF EXISTING LUMINAIRE SUPPORTS ON GUIDE SIGNS DO NOT MEET THE REQUIREMENTS SET FORTH ON SHEET E-15, THE LUMINAIRE SUPPORTS SHALL BE RECONSTRUCTED TO MEET THE REQUIREMENTS OF SHEET E-15.

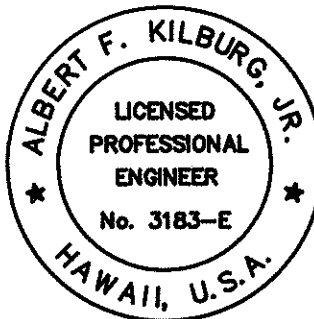


SECTION A-A



SIDE VIEW

**GUIDE SIGN LUMINAIRE**  
**(175W METAL HALIDE, 480 VOLT)**  
A  
E-14A  
NOT TO SCALE



THIS WORK WAS PREPARED BY  
ME OR UNDER MY SUPERVISION

E-14A

7/6/92

ADD SIGN NO. 8 TO SCHED.  
REMOVE EXIST. LUMINAIRE SUPPORTS  
ON SIGNS NO. 3,4,6.

DATE

REVISION

STATE OF HAWAII  
DEPARTMENT OF TRANSPORTATION  
HIGHWAYS DIVISION

MISCELLANEOUS DETAILS

INTERSTATE ROUTE H-1  
KUNIA I.C. TO WAIAWA I.C.  
PROJECT No. IR-H1-1(212)

SCALE: AS NOTED

SHEET No. 11 OF 14 SHEETS

DVM JOB NO.: 89104  
CAD FILE NO.: 8910414A-A1

ADD. 21