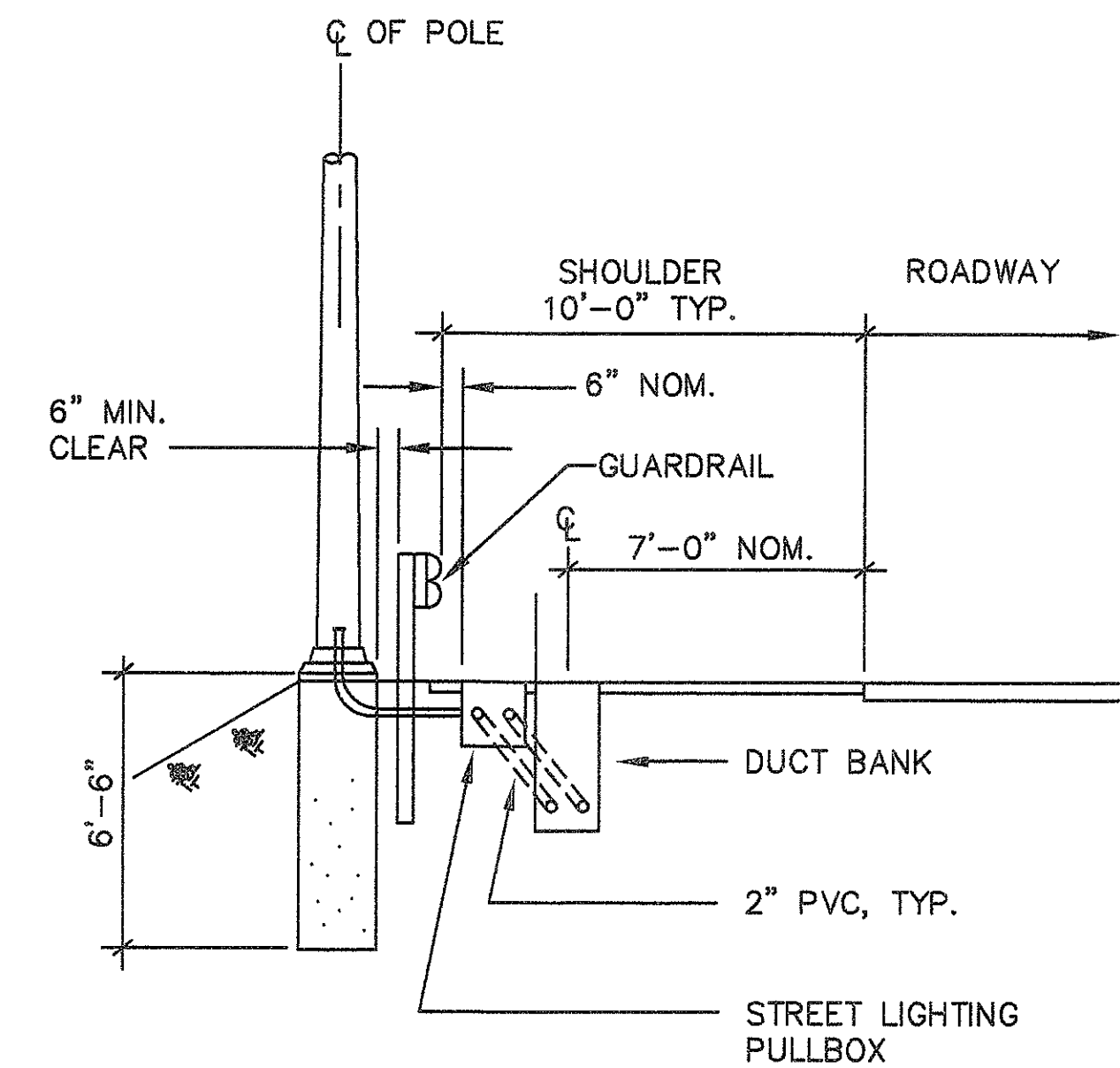
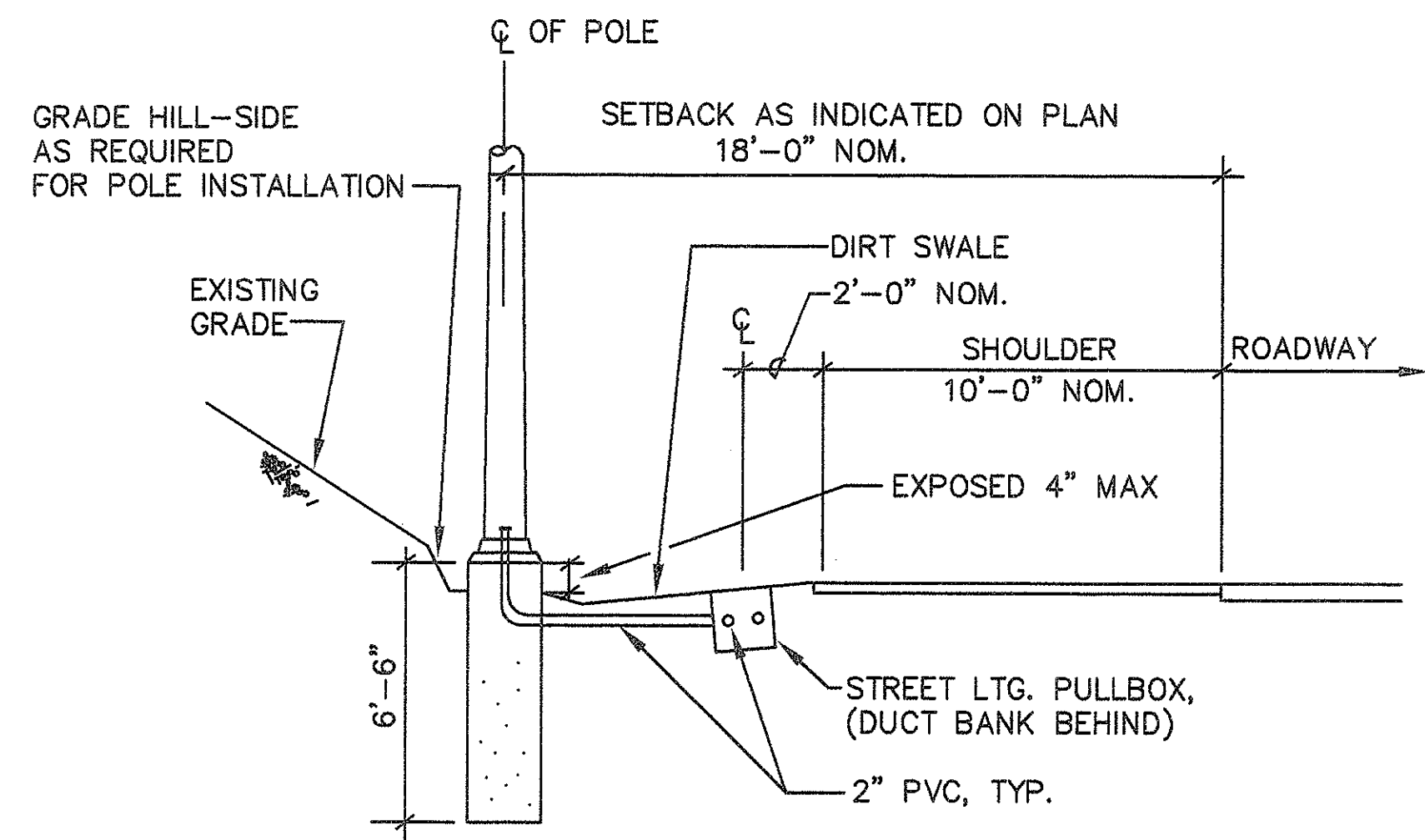


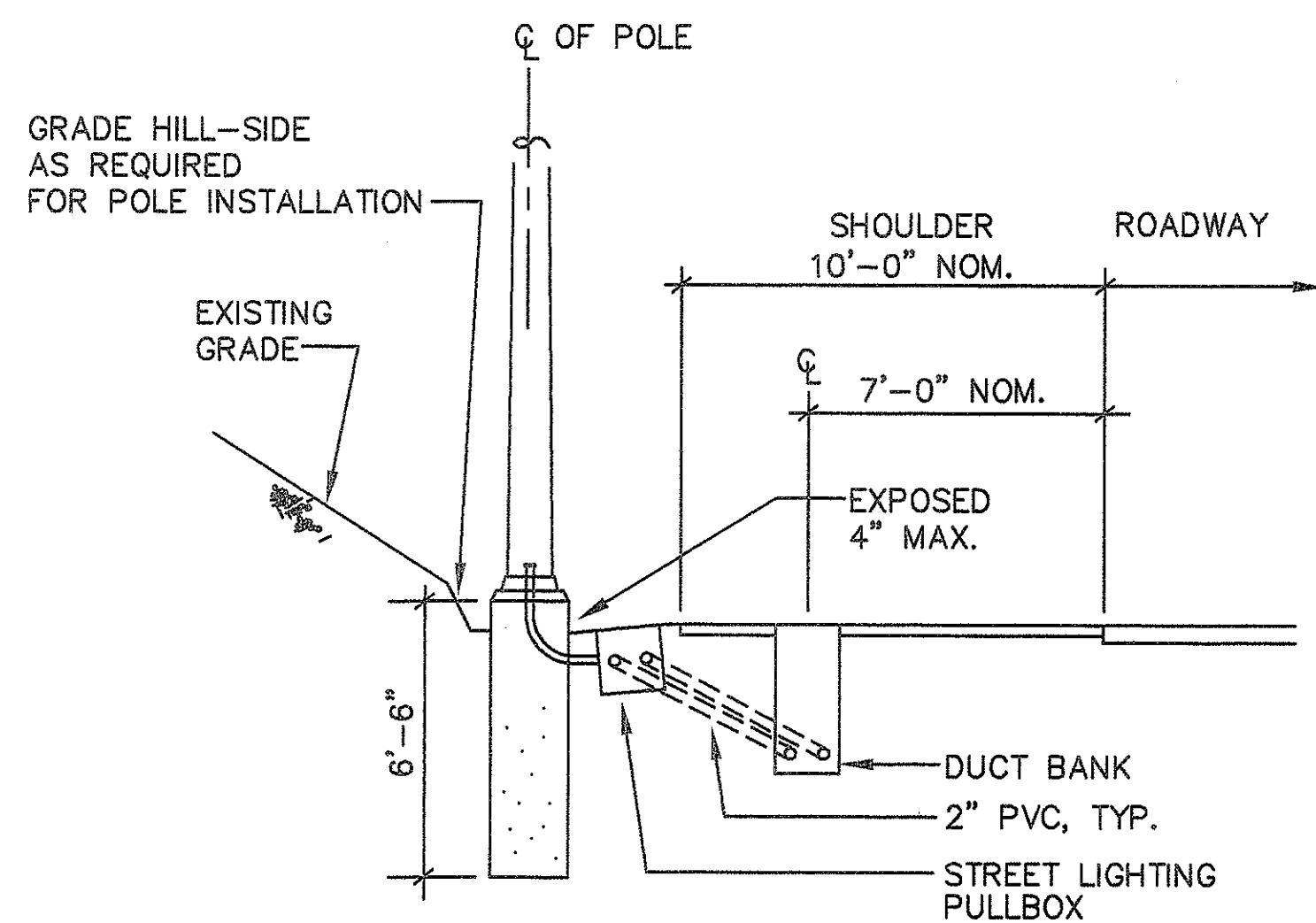
FED. ROAD DIST. No.	STATE	FED. AID PROJ. No.	FISCAL YEAR	SHEET No.	TOTAL SHEETS
HAWAII	HAW.	IR-H1-1 (213)	1994	26	38



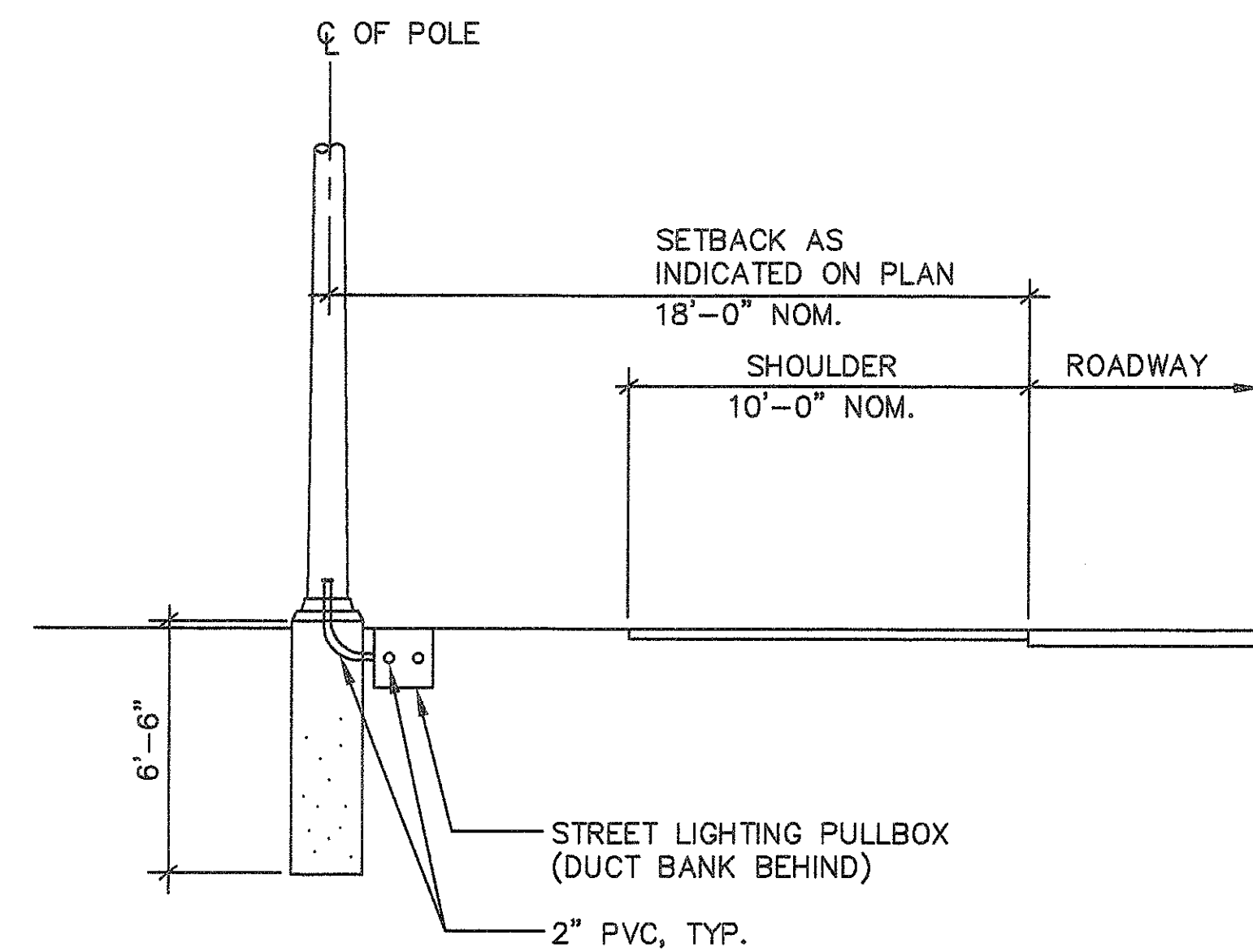
**A**  
**TYPICAL LIGHT STANDARD INSTALLATION**  
E-24 SCALE: 1/4" = 1'-0"



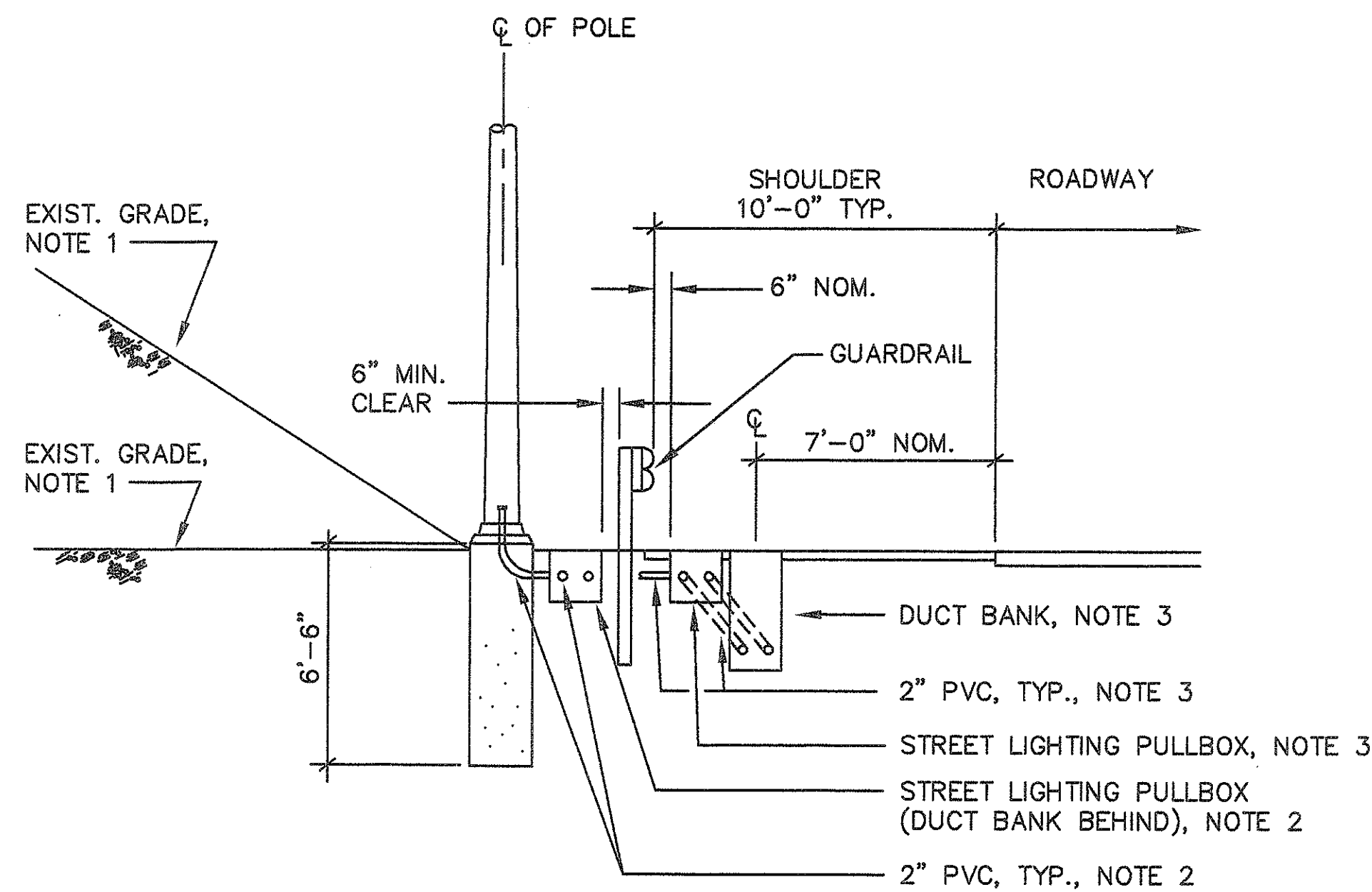
**B**  
**TYPICAL LIGHT STANDARD INSTALLATION**  
E-24 SCALE: 1/4" = 1'-0"



**C**  
**TYPICAL LIGHT STANDARD INSTALLATION**  
E-24 SCALE: 1/4" = 1'-0"



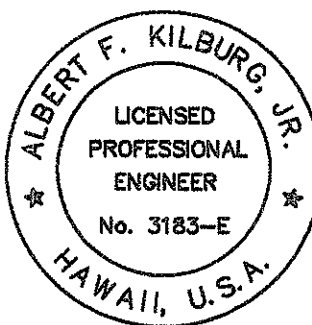
**D**  
**TYPICAL LIGHT STANDARD INSTALLATION**  
E-24 SCALE: 1/4" = 1'-0"



**NOTES:**

- EXISTING GRADE IS EITHER AN "UPWARD SLOPE" OR "LEVEL GROUND".
- LOCATE STREET LTG. PULLBOX AND DUCTBANK "OUTSIDE OF GUARDRAIL" AS PERMITTED BY EXISTING CONDITIONS.
- LOCATE STREET LTG. PULLBOX AND DUCTBANK "INSIDE OF GUARDRAIL" AS SHOWN WHEN EXISTING CONDITIONS DO NOT ALLOW INSTALLATION "OUTSIDE OF GUARDRAIL."

**E**  
**TYPICAL LIGHT STANDARD INSTALLATION**  
E-24 SCALE: 1/4" = 1'-0"



*Albert F. Kilburg, Jr.*  
THIS WORK WAS PREPARED BY  
ME OR UNDER MY SUPERVISION

E-24

STATE OF HAWAII  
DEPARTMENT OF TRANSPORTATION  
HIGHWAYS DIVISION

**TYPICAL LIGHT STANDARD INSTALLATION**

INTERSTATE ROUTE H-1  
PALAILAI I.C. TO KUNIA I.C.  
PROJECT No. IR-H1-1(213)

SCALE: AS NOTED

DVM JOB No.: 89104.01  
CAD FILE No.: E-24/3

DATE REVISION

SHEET No. 11 OF 18 SHEETS