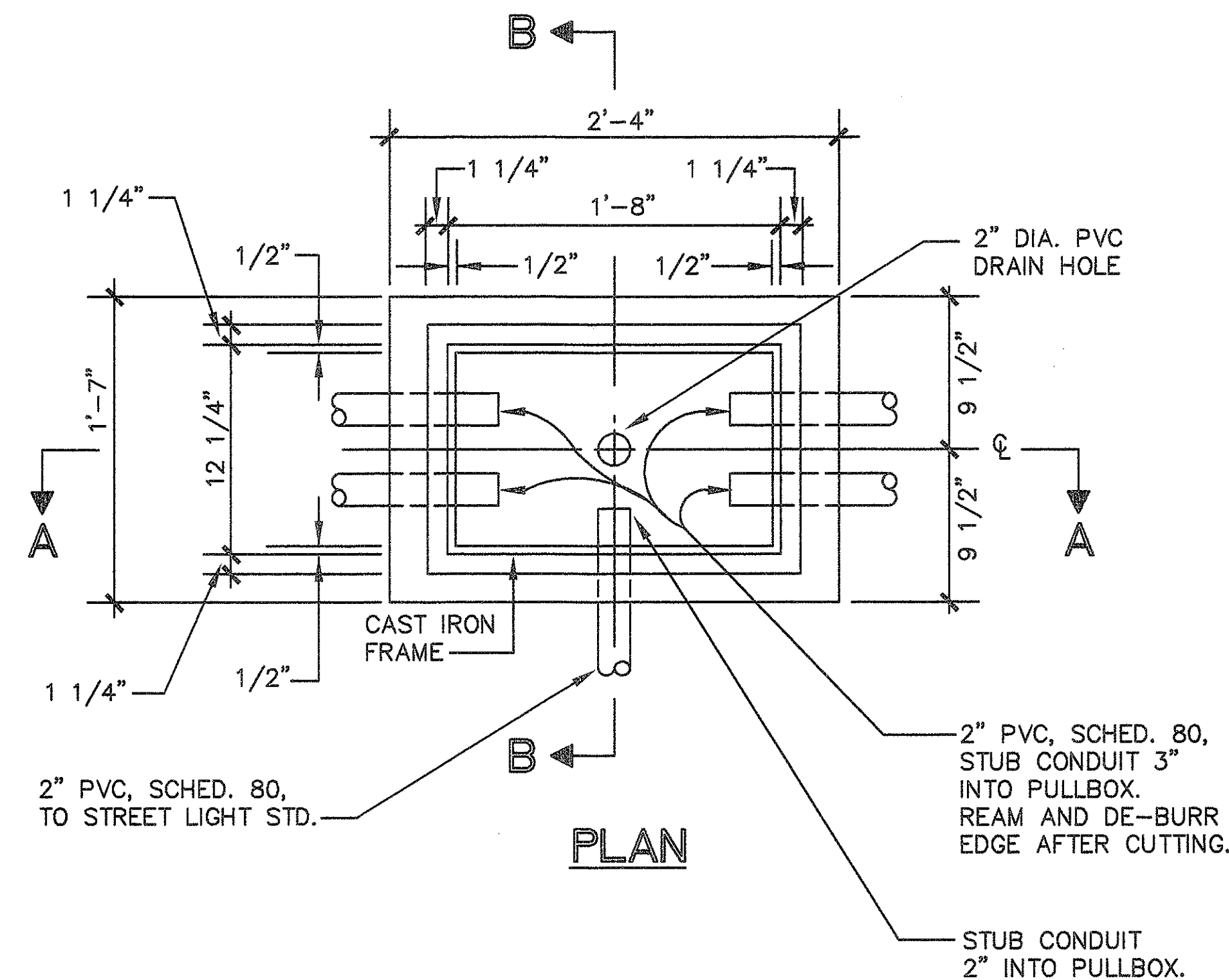
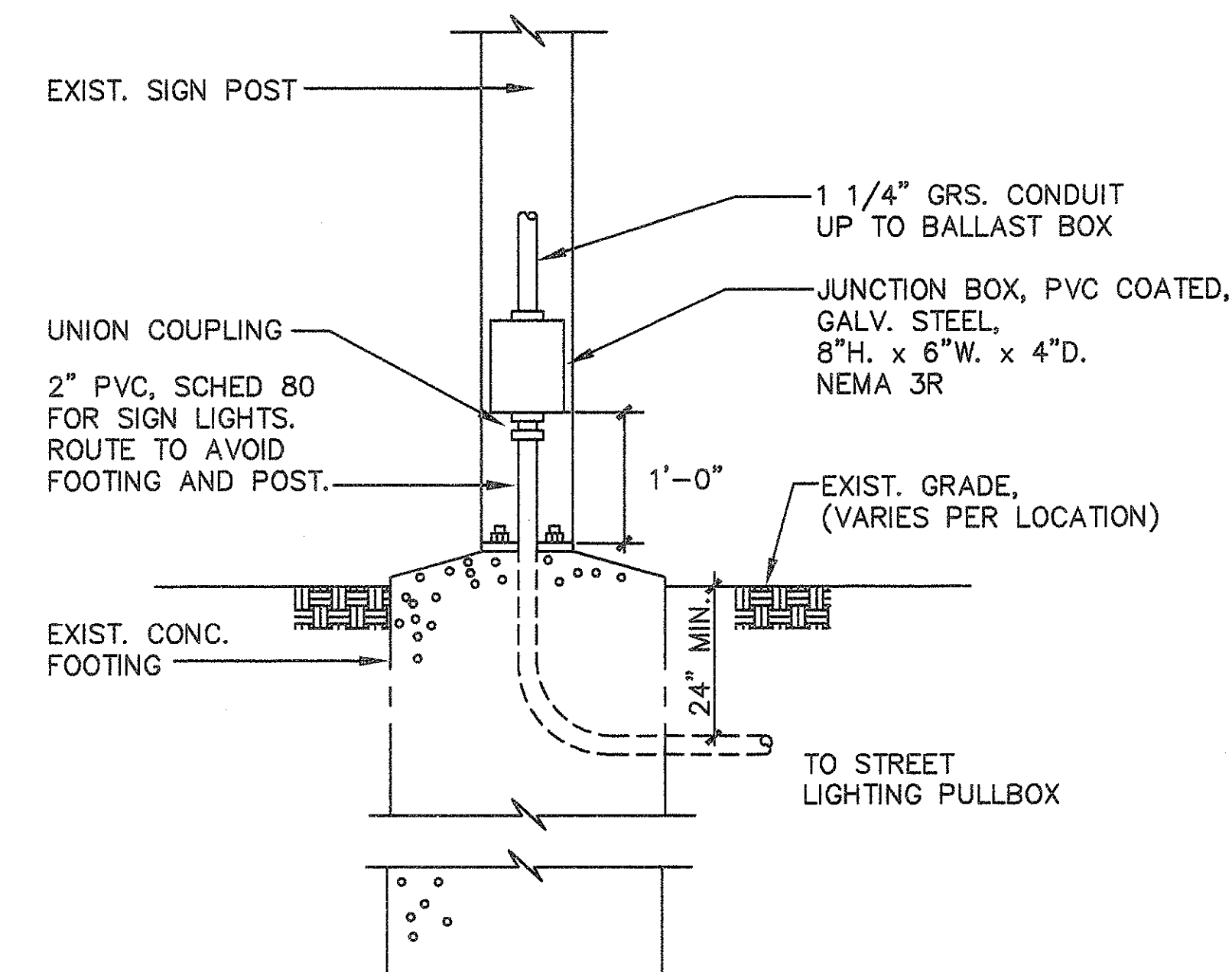
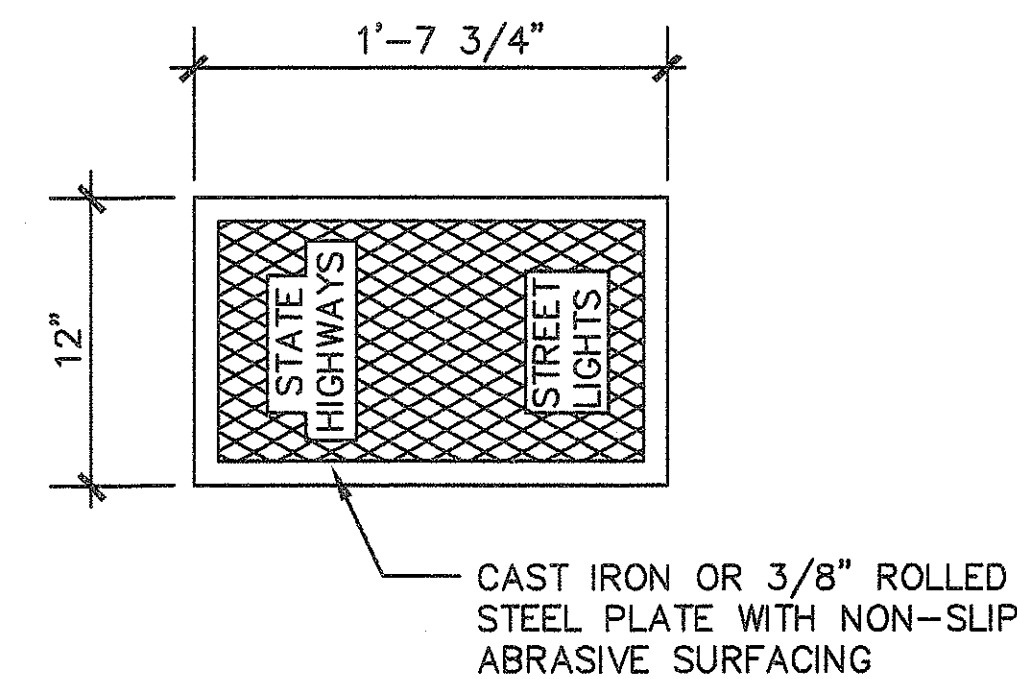


FED. ROAD DIST. No.	STATE	FED. AID PROJ. No.	FISCAL YEAR	SHEET No.	TOTAL SHEETS
HAWAII	HAW.	IR-H1-1 (213)	1994	25	38



NOTE:

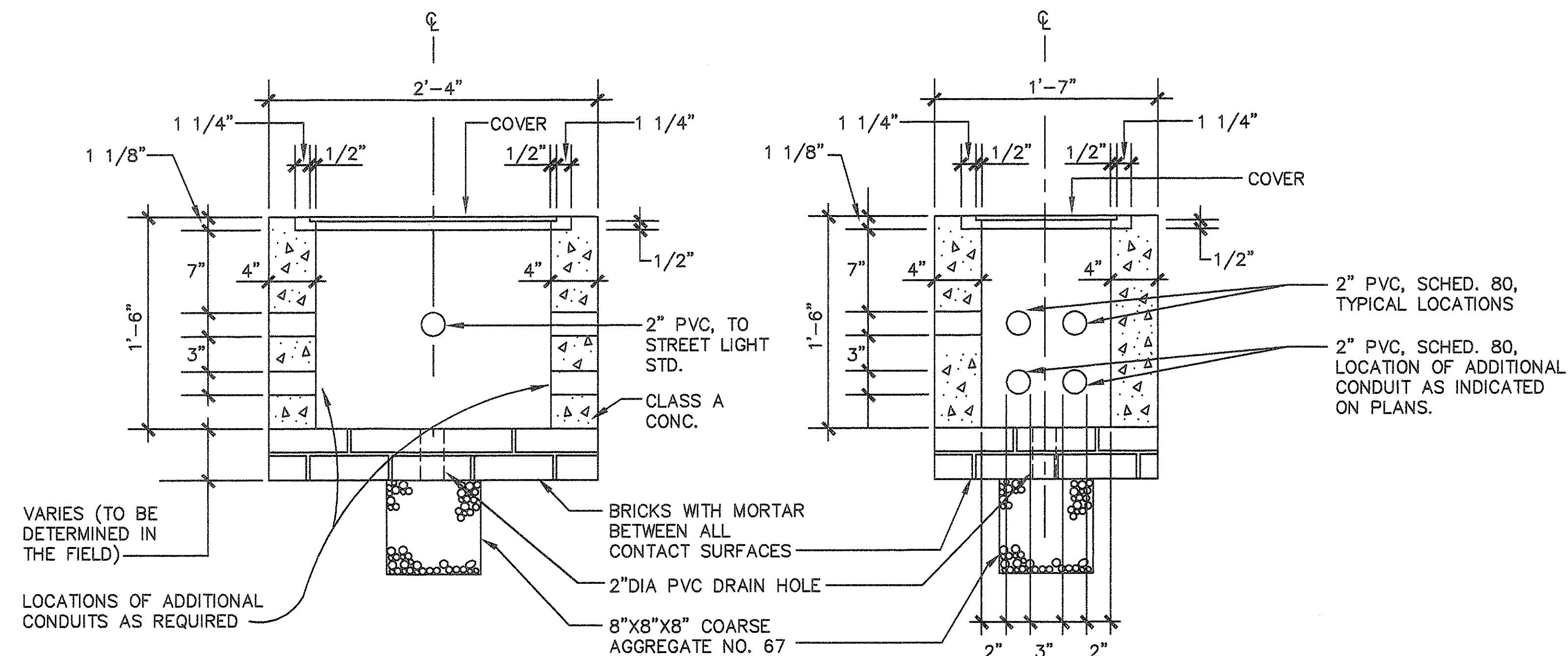
STEEL RIM SHALL BE WELDED TO BOTTOM OF STEEL COVER IF NECESSARY SO THAT TOP OF COVER AND FRAME ARE FLUSH.



JUNCTION BOX MOUNTING AT GUIDE SIGN POST

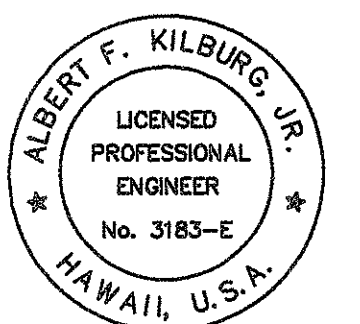
E-23 NOT TO SCALE

Note: Handhole Covers on Shoulder (Asphalt) areas secured w/Two Stainless Steel Screws (106 Total Handholes) See CCO No.2



STREET LIGHTING PULLBOX DETAIL

E-23 NOT TO SCALE



Albert F. Kiburg, Jr.
THIS WORK WAS PREPARED BY ME OR UNDER MY SUPERVISION

DVM JOB No.: 89104.01
CAD FILE No.: E-23/3

DATE REVISION

STATE OF HAWAII
DEPARTMENT OF TRANSPORTATION
HIGHWAYS DIVISION

MISCELLANEOUS DETAILS

INTERSTATE ROUTE H-1
PALAILAI I.C. TO KUNIA I.C.
PROJECT No. IR-H1-1(213)

SCALE: AS NOTED

SHEET No. 10 OF 18 SHEETS