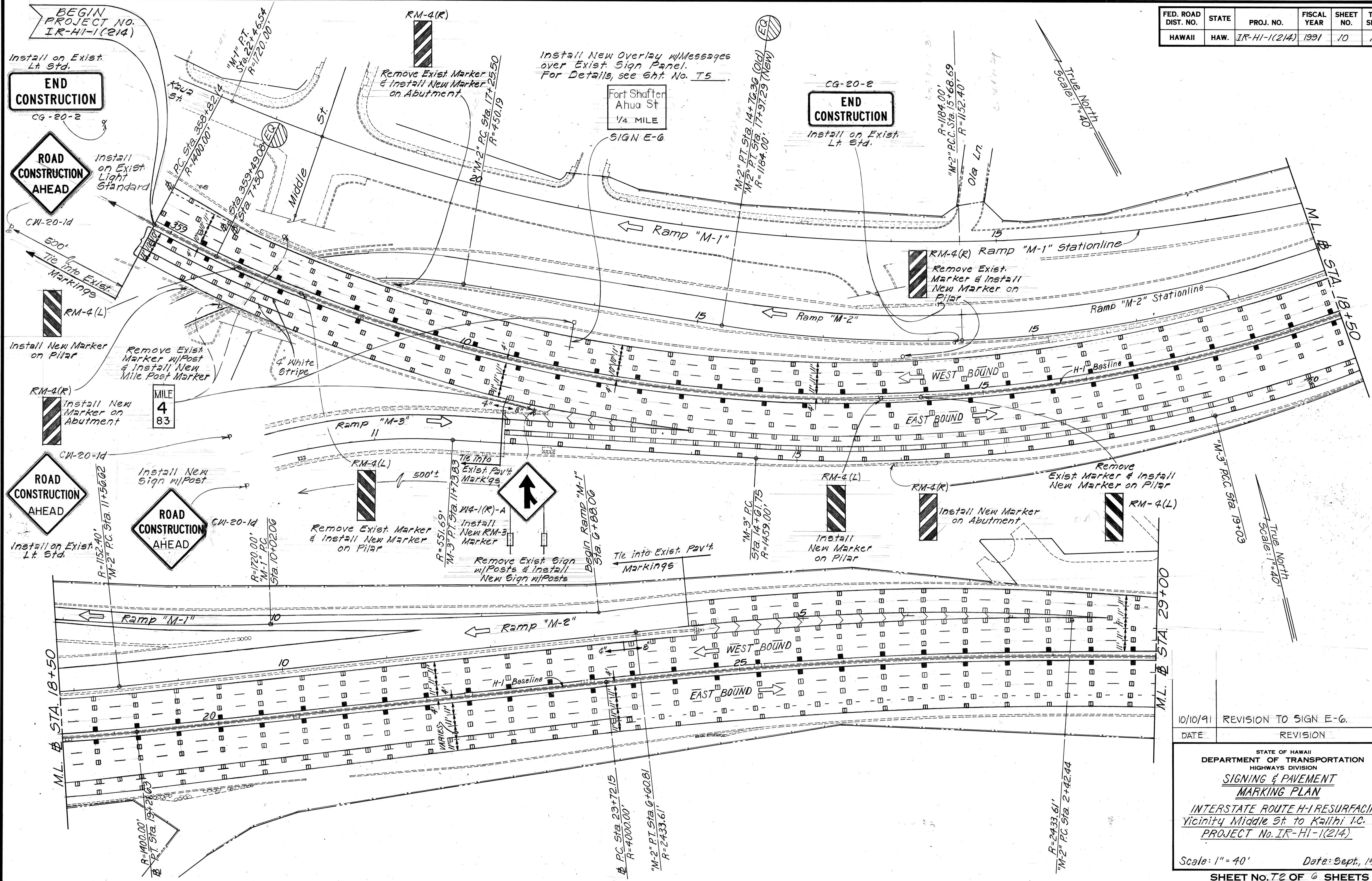


FED. ROAD DIST. NO.	STATE	PROJ. NO.	FISCAL YEAR	SHEET NO.	TOTAL SHEETS
HAWAII	HAW.	IR-HI-1(214)	1991	10	14



ORIGINAL PLAN	DATE
DRAWN BY	
DESIGNED BY	
QUANTITIES BY	
CHECKED BY	

10/10/91 REVISION TO SIGN E-6.  
 DATE REVISION

STATE OF HAWAII  
 DEPARTMENT OF TRANSPORTATION  
 HIGHWAYS DIVISION  
**SIGNING & PAVEMENT  
 MARKING PLAN**  
 INTERSTATE ROUTE H-1 RESURFACING  
 Vicinity Middle St to Kalihi I.C.  
 PROJECT No. IR-HI-1(214)

Scale: 1" = 40' Date: Sept, 1990  
 SHEET No. 10 OF 6 SHEETS

C.O.10

Remove Exist. Signs & Install New Signs on Median Side Post

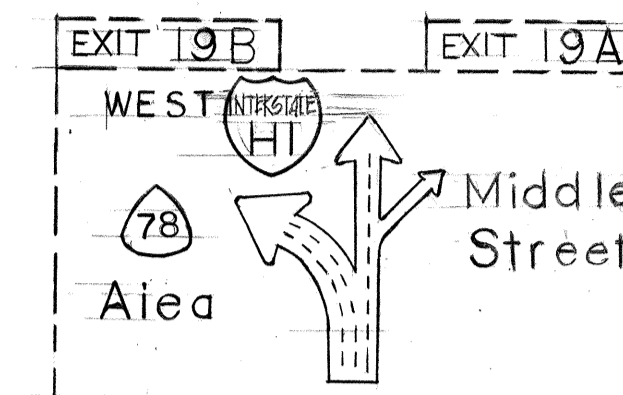
Exist. Sign & Posts shall be Removed & Stock-piled at a site designated by the Engineer.

Remove Exist. Signs & Install New Signs on Abutment

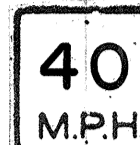
Remove Exist. Marker & Install New Marker on Abutment

FED. ROAD DIST. NO.	STATE	PROJ. NO.	FISCAL YEAR	SHEET NO.	TOTAL SHEETS
HAWAII	HAW.	IR-HI-1(214)	1991	11	14

Remove Exist. Message NORTH & Install New Message WEST on Exist. Sign Panel. For Detail, see Sht. No. T-5



W15-1a (See Sht. No. T-5 for Detail)



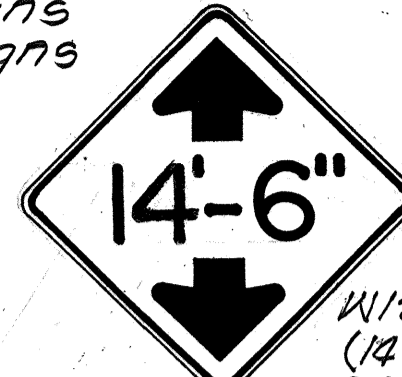
W13-1(40)-A

Begin Ramp "M-2" STA. 0+00

Scale: 1" = 40'

Middle St Nimitz Hwy. RIGHT LANE

Remove Exist. Mile Post Marker & Install New Mile Post Marker on Exist. Light Standard



W12-2 (14'x6") 36"x36" 24"x18"

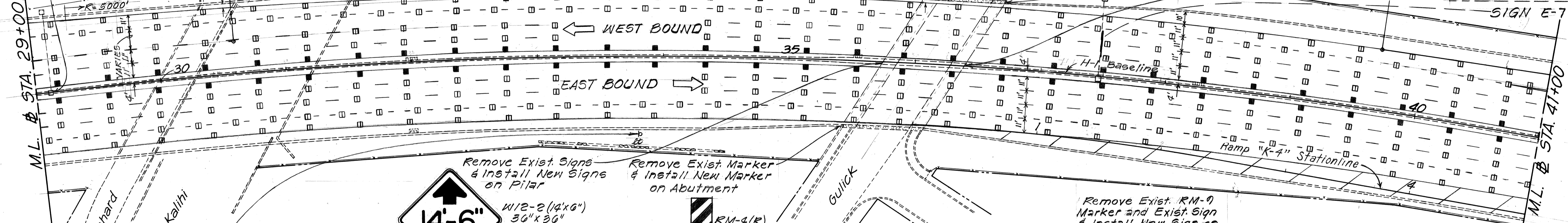
RM-4(R)

Remove Exist. Marker & Install New Marker on Pillar

RM-4(L)

Begin Ramp "K-1" STA. 0+00

SIGN E-7



W12-2 (14'x6") 36"x36" 24"x18"

LOW CLEARANCE 24"x18"

RM-4(L)

Tie into Exist. Markings

Ramp "K-1"

Remove Exist. Marker & Install New Marker on Abutment

RM-4(R)

Install New Marker on Abutment

RM-4(R)

Install New Marker on Pillar

RM-4(L)

Remove Exist. RM-9 Marker and Exist. Sign & Install New Sign on Pillar



W13-2 (25)

Install New Marker on Pillar

RM-4(L)

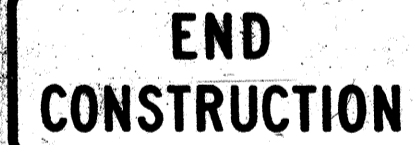


CW-20-1d

Tie into Exist. Markings

Ramp "K-5"

Install on Exist. Light Standard



CG-20-2

Exist. Sign to Remain  
BISHOP MUSEUM NEXT RIGHT



Remove Exist. Mile Post Marker & Install New Mile Post Marker on Exist. "K-1" Stationline Light Standard

Ramp

ML @ STA. 41+00

True North Scale: 1" = 40'

DATE	REVISION
6/13/91	Revised Message to Exist. SIGN E-7

R=1698.34  
"K-4" P.C. Sta. B+97.17  
R=600.00

Install New Marker on Abutment

RM-4(R)

Install New Marker on Pillar

RM-4(L)

Install New Marker on Abutment

RM-4(R)

STATE OF HAWAII  
DEPARTMENT OF TRANSPORTATION  
HIGHWAYS DIVISION

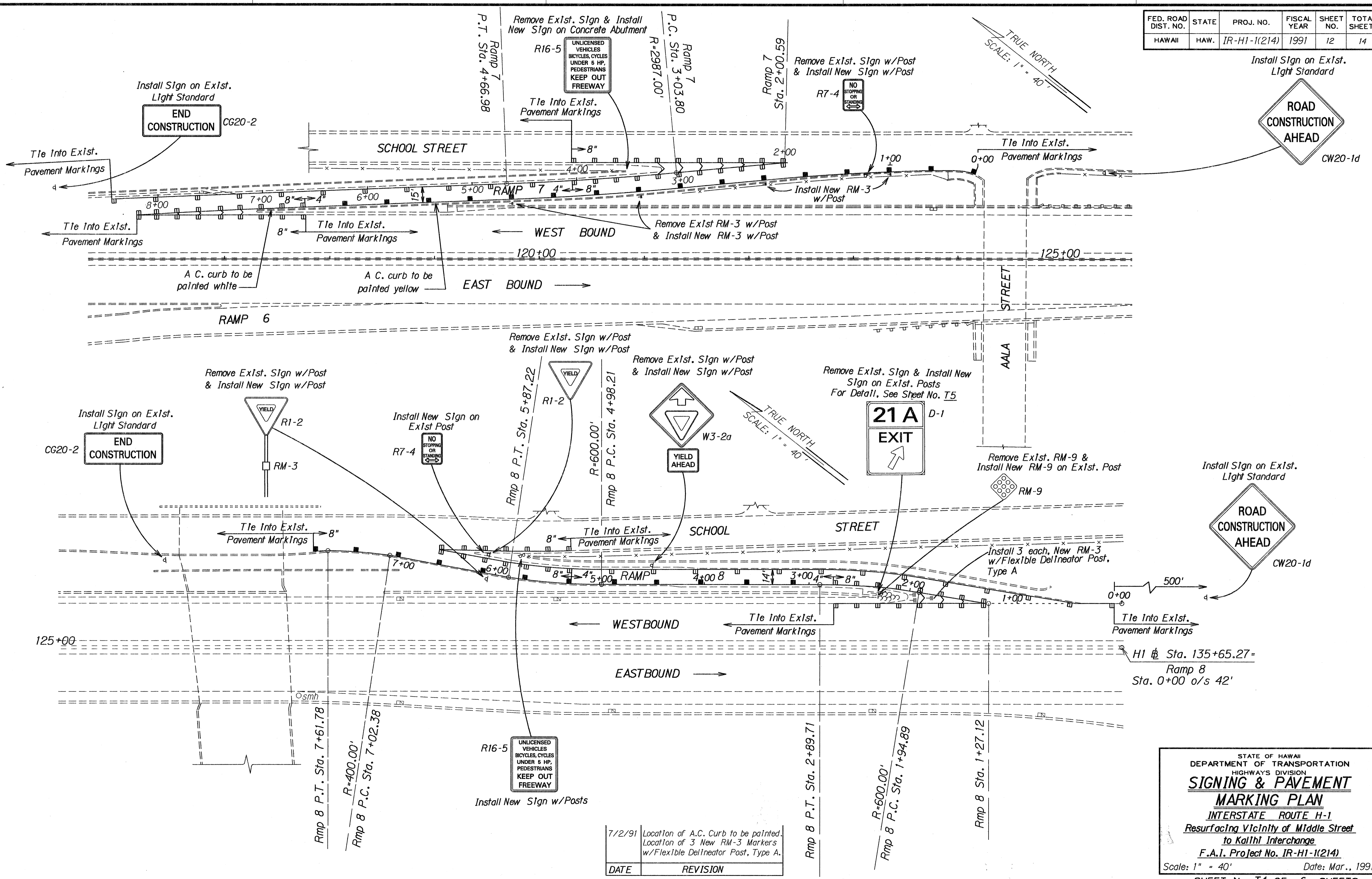
**SIGNING & PAVEMENT MARKING PLAN**

INTERSTATE ROUTE H-1 RESURFACING  
Vicinity Middle St. to Kaili I.C.  
PROJECT No. IR-HI-1(214)

Scale: 1" = 40' Date: Sept. 1990  
SHEET NO. 11 OF 6 SHEETS

DATE	
SURVEY PLOTTED BY	
DRAWN BY	
TRACED BY	
QUANTITIES BY	
CHECKED BY	
ORIGINAL PLAN NO.	
NOTE BOOK NO.	

FED. ROAD DIST. NO.	STATE	PROJ. NO.	FISCAL YEAR	SHEET NO.	TOTAL SHEETS
HAWAII	HAW.	IR-H1-1(214)	1991	12	14



STATE OF HAWAII  
DEPARTMENT OF TRANSPORTATION  
HIGHWAYS DIVISION

### SIGNING & PAVEMENT MARKING PLAN

INTERSTATE ROUTE H-1  
Resurfacing Vicinity of Middle Street  
to Kailhi Interchange  
F.A.I. Project No. IR-H1-1(214)

Scale: 1" = 40' Date: Mar., 1991

SHEET No. T4 OF 6 SHEETS

DATE	REVISION
7/2/91	Location of A.C. Curb to be painted, Location of 3 New RM-3 Markers w/Flexible Delinicator Post, Type A.

SURVEY PLOTTED BY	DATE
DESIGNED BY	
NOTE BOOK	
QUANTITIES BY	
CHECKED BY	