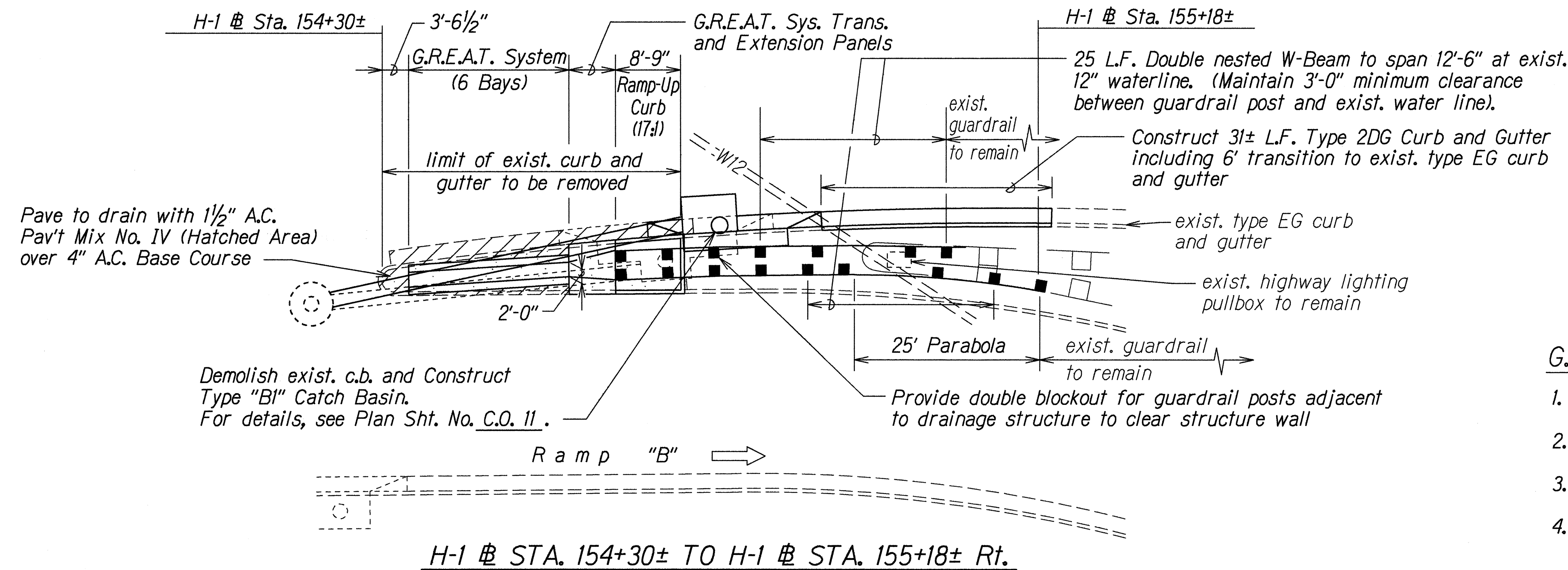
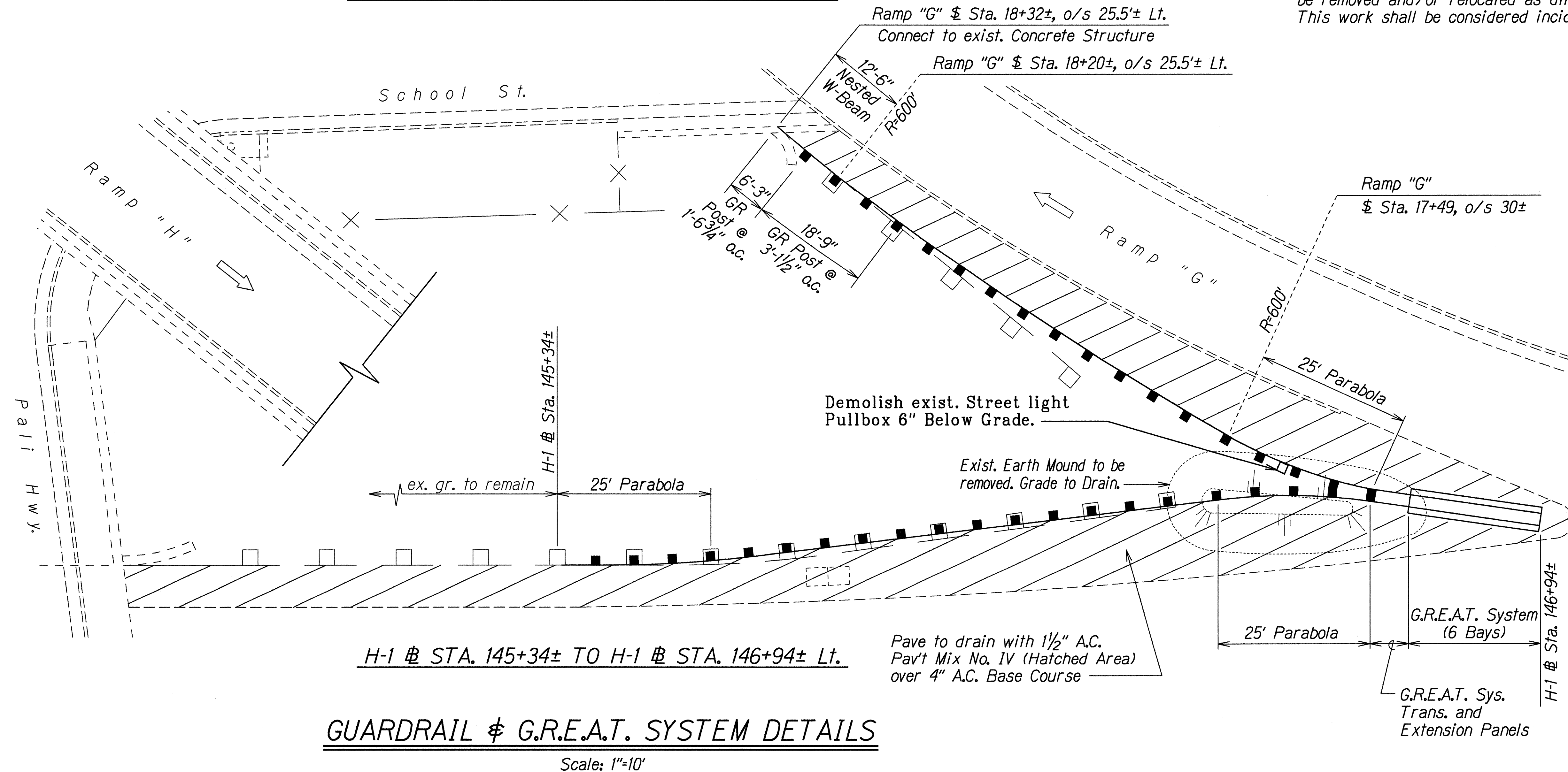


FED. ROAD DIST. NO.	STATE	FED. AID PROJ. NO.	FISCAL YEAR	SHEET NO.	TOTAL SHEETS
HAWAII	HAW.	1M-HI-1(220)	1995	9	37



G.R.E.A.T. SYSTEM NOTES

1. All work associated with the G.R.E.A.T. System shall be as directed by the Engineer.
2. The transition and extension panels required for the G.R.E.A.T. System shall be considered incidental to the G.R.E.A.T. System.
3. Removal and disposal of existing Inertial Barrier at H-1 Sta. 137+05± Rt. (or at Ramp "D") shall be considered incidental to G.R.E.A.T. System.
4. Existing Sprinkler Systems shall be functional at all times. Portions of Sprinkler Systems affected by new work shall be removed and/or relocated as directed by the Engineer. This work shall be considered incidental to the G.R.E.A.T. System.



LEGEND FOR AS-BUILT POSTINGS	
	Squiggly line for as-built deletion
	Double line for as-built deletion
	Text for as-built posting

6-25-96	Revised Guardrail Detail H-1 Sta. 154+30± to H-1 Sta. 155+18± Rt.
---------	---

6-16-96	Add G.R.E.A.T. System Notes and Revise Guardrail Post spacing at Ramp "G"
---------	---

DATE	REVISION
------	----------

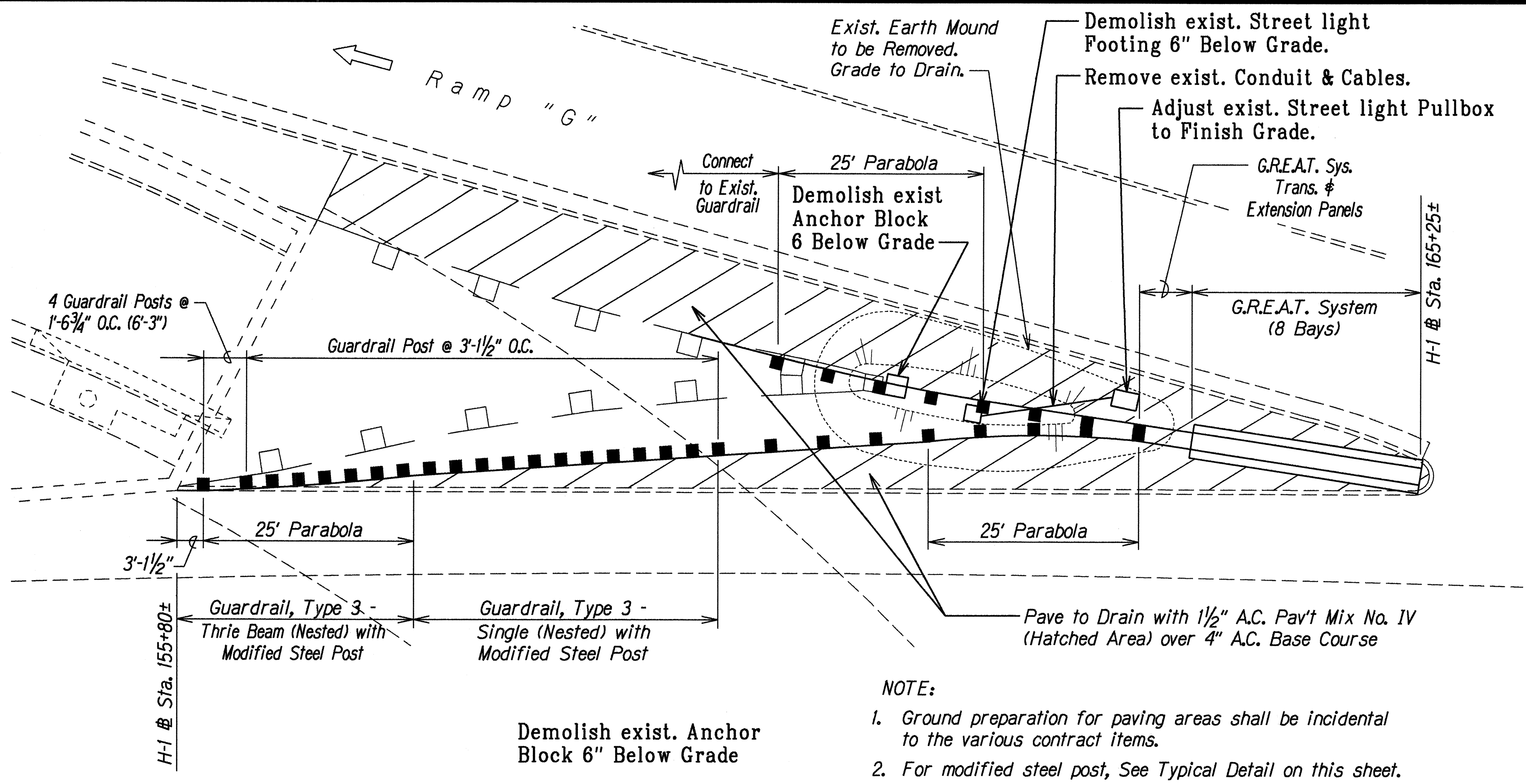
STATE OF HAWAII DEPARTMENT OF TRANSPORTATION HIGHWAYS DIVISION	
GUARDRAIL & G.R.E.A.T. DETAILS	
INTERSTATE ROUTE H-1	
Pav't Repair and Rehab. Kalihi St. to Vic. of Pali Hwy. and Kinau Off-Ramp F.A.I. Proj. No. 1M-HI-1(220)	
Scale: As Shown	Date: May, 1995
SHEET No. 1 OF 2 SHEETS	

ORIGINAL PLAN	DATE	10-26-96
DRAWN BY J. Malsam/M. Howells/P. Wong		
NOTED BY J. Malsam		
CHECKED BY N. bhlmsl		

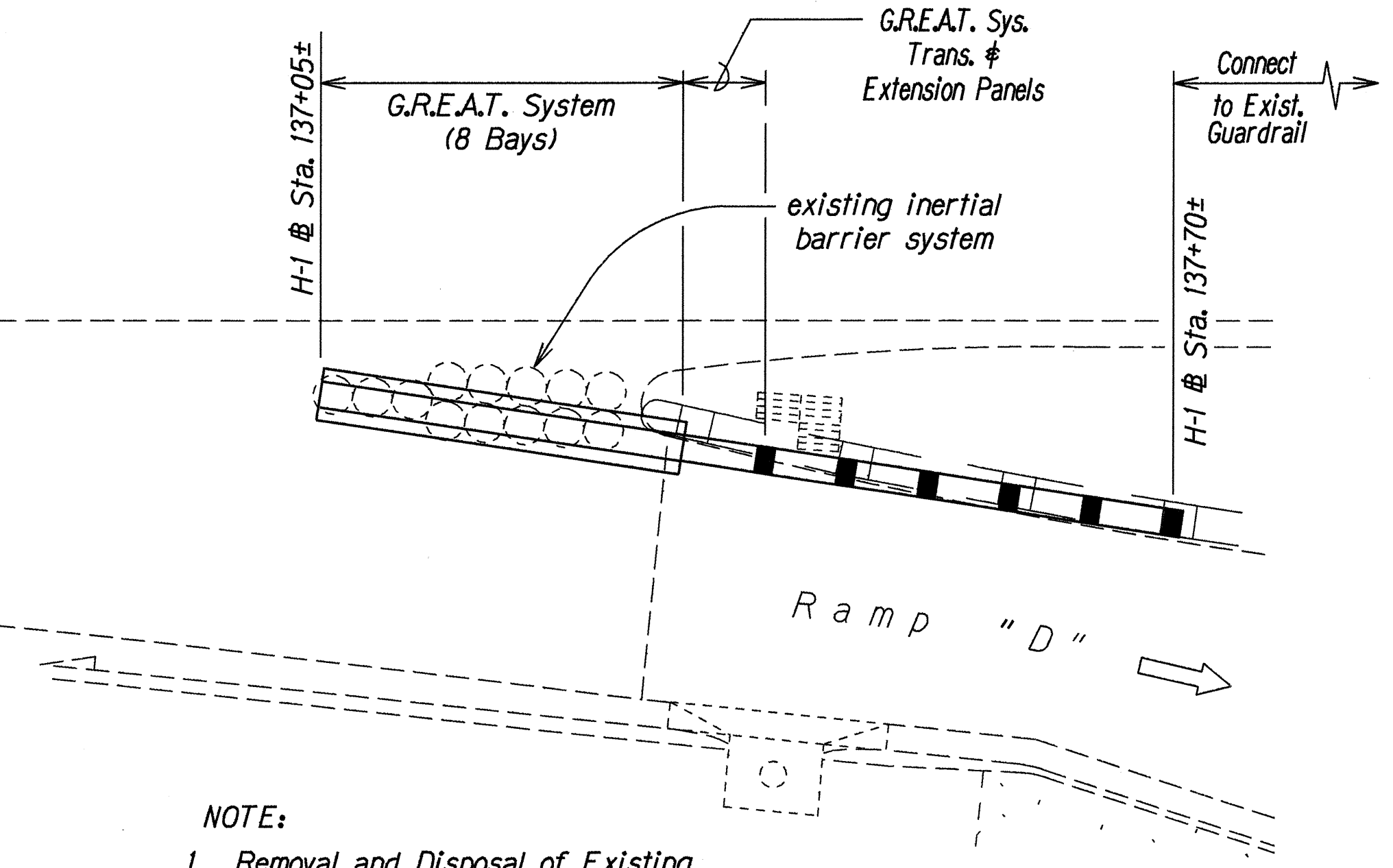
GUARDRAIL & G.R.E.A.T. SYSTEM DETAILS

Scale: 1"=10'

DATE	REVISION	FED. ROAD DIST. NO.	STATE	FED. AID PROJ. NO.	FISCAL YEAR	SHEET NO.	TOTAL SHEETS
4-15-96	Revised Guardrail and G.R.E.A.T. System Details and Added Modified Steel Post Typical Detail.	HAWAII	HAW.	1M-HI-1(220)	1995	10	37



H-1 @ STA. 155+80± TO H-1 @ STA. 165+25± Lt.



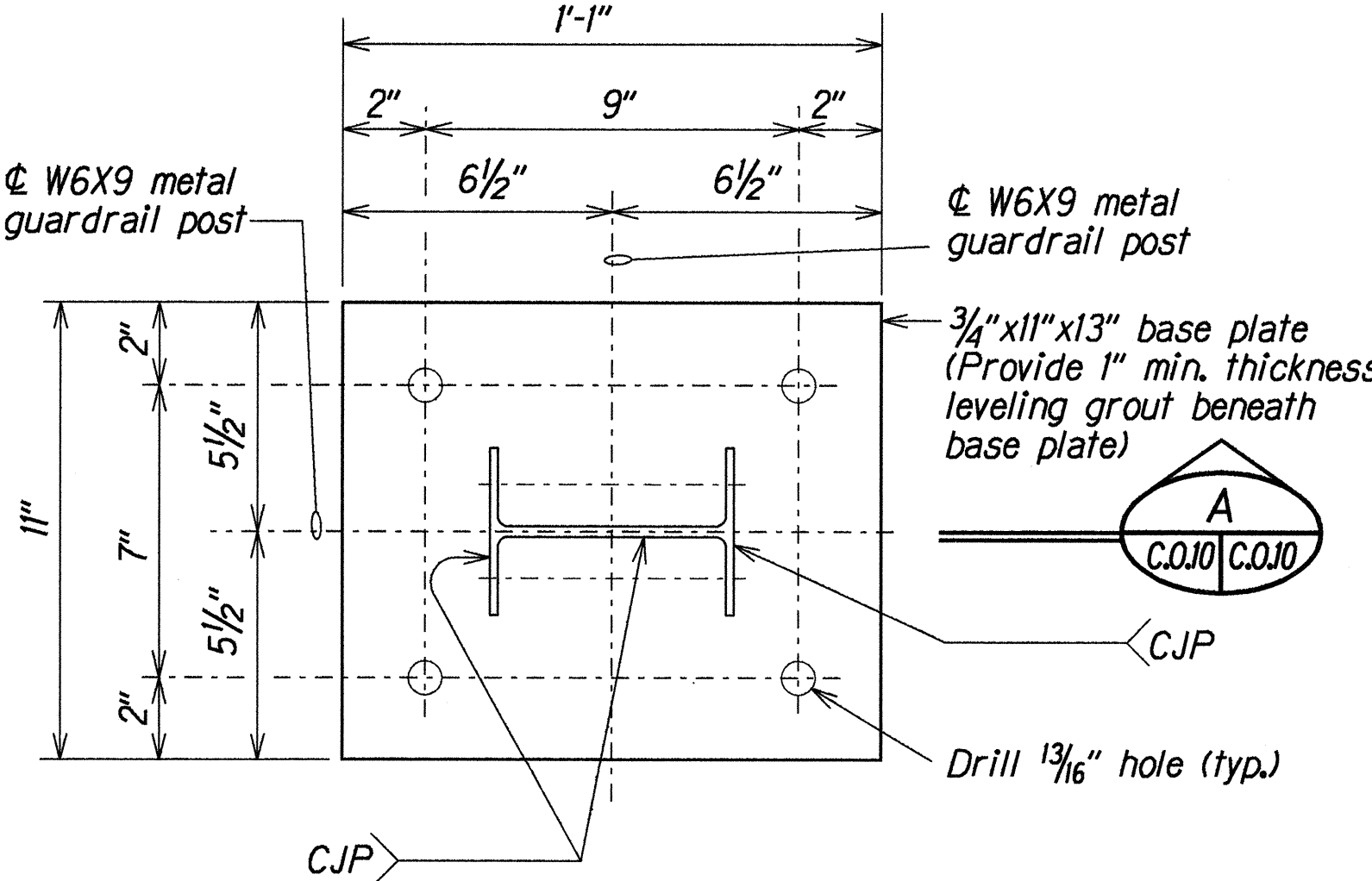
H-1 @ STA. 137+05± TO H-1 @ STA. 137+70± Rt.

GUARDRAIL & G.R.E.A.T. SYSTEM DETAILS

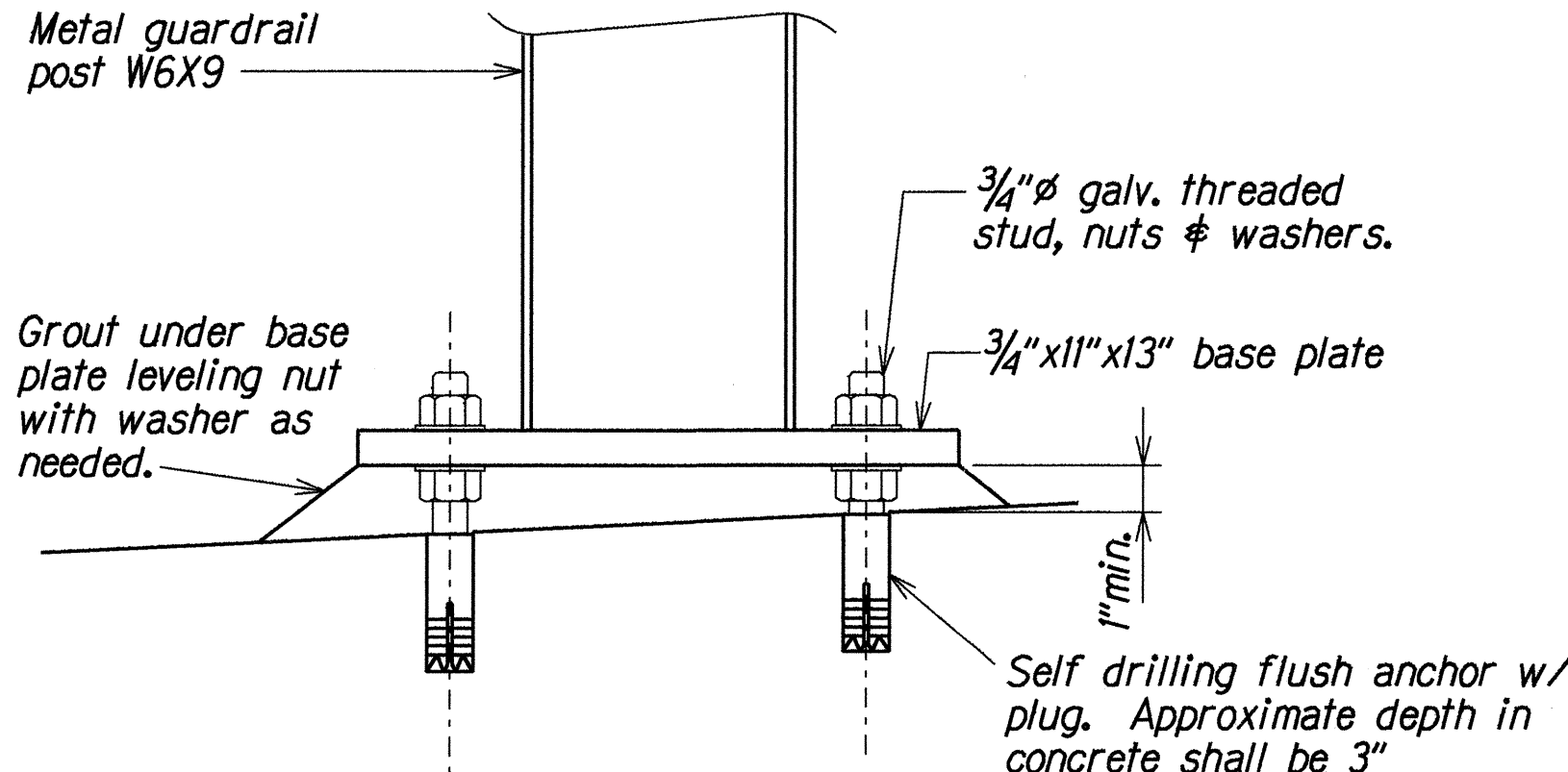
Scale: 1"=10'

LEGEND FOR AS-BUILT POSTINGS	
	Squiggly line for as-built deletion
	Double line for as-built deletion
	Text for as-built posting

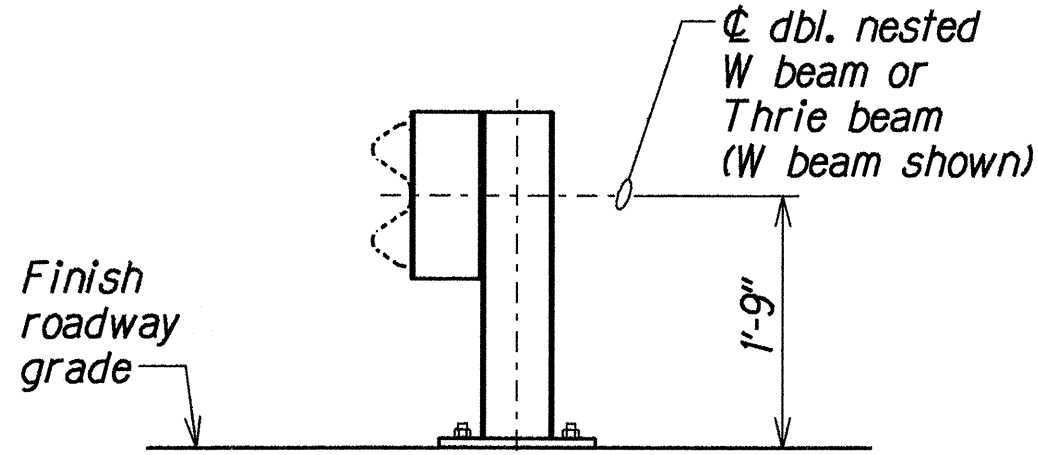
- NOTE:
- The Contractor shall verify all existing conditions prior to commencing with the work.
 - Any damage to the existing structure due to the Contractor's operation or negligence shall be repaired by the Contractor at his expense to the satisfaction of the Engineer, with no additional cost to the State.
 - See "DOT Standard Plan" Sht. *TE-57 for guardrail Type 3 beam details and Sht. *TE-50 and TE-51 for W beam metal guardrail details. Lap terminal connector and rail element in the direction of traffic to prevent snagging.
 - 3/4" anchor bolts shall be ASTM A 307 or A 449 hot dip galvanized and shall have ultimate tensile capacity of 3,000 lbs and ultimate shear capacity of 7,000 lbs.
 - All welding shall be in accordance with the current edition of Reinforcing Steel Welding Code AWS D1.4.
 - All structural steel shall be ASTM A 36 hot dip galvanized after fabrication.
 - Prior to welding W 6X9 guardrail post to 3/4" base plate, the Contractor shall field verify site conditions to ensure 1'-9" height of centerline of guardrail to finish roadway grade.



PLAN
Scale: 3" = 1'-0"



SECTION A
Scale: 3" = 1'-0"



TYPICAL INSTALLATION
Scale: 3/4" = 1'-0"

TYPICAL DETAIL - MODIFIED STEEL POST

Scale: As Shown

STATE OF HAWAII
DEPARTMENT OF TRANSPORTATION
HIGHWAYS DIVISION

GUARDRAIL & G.R.E.A.T. DETAILS
INTERSTATE ROUTE H-1
Pav't. repair and Rehab. Kalihi St.
to Vic. of Pali Hwy. and Kinau Off-Ramp
F.A.I. Proj. No. 1M-HI-1(220)
Scale: As Shown Date: May, 1995