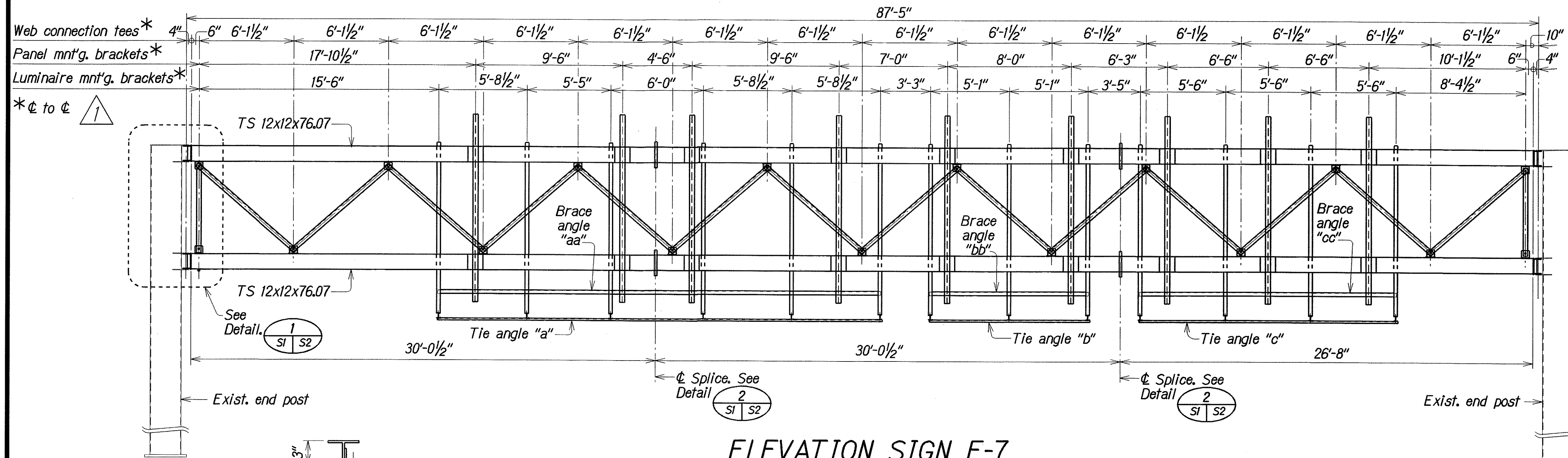


FED. ROAD DIST. NO.	STATE	PROJ. NO.	FISCAL YEAR	SHEET NO.	TOTAL SHEETS
HAWAII	HAW.	HIG-01-95M	1995	C.04	7

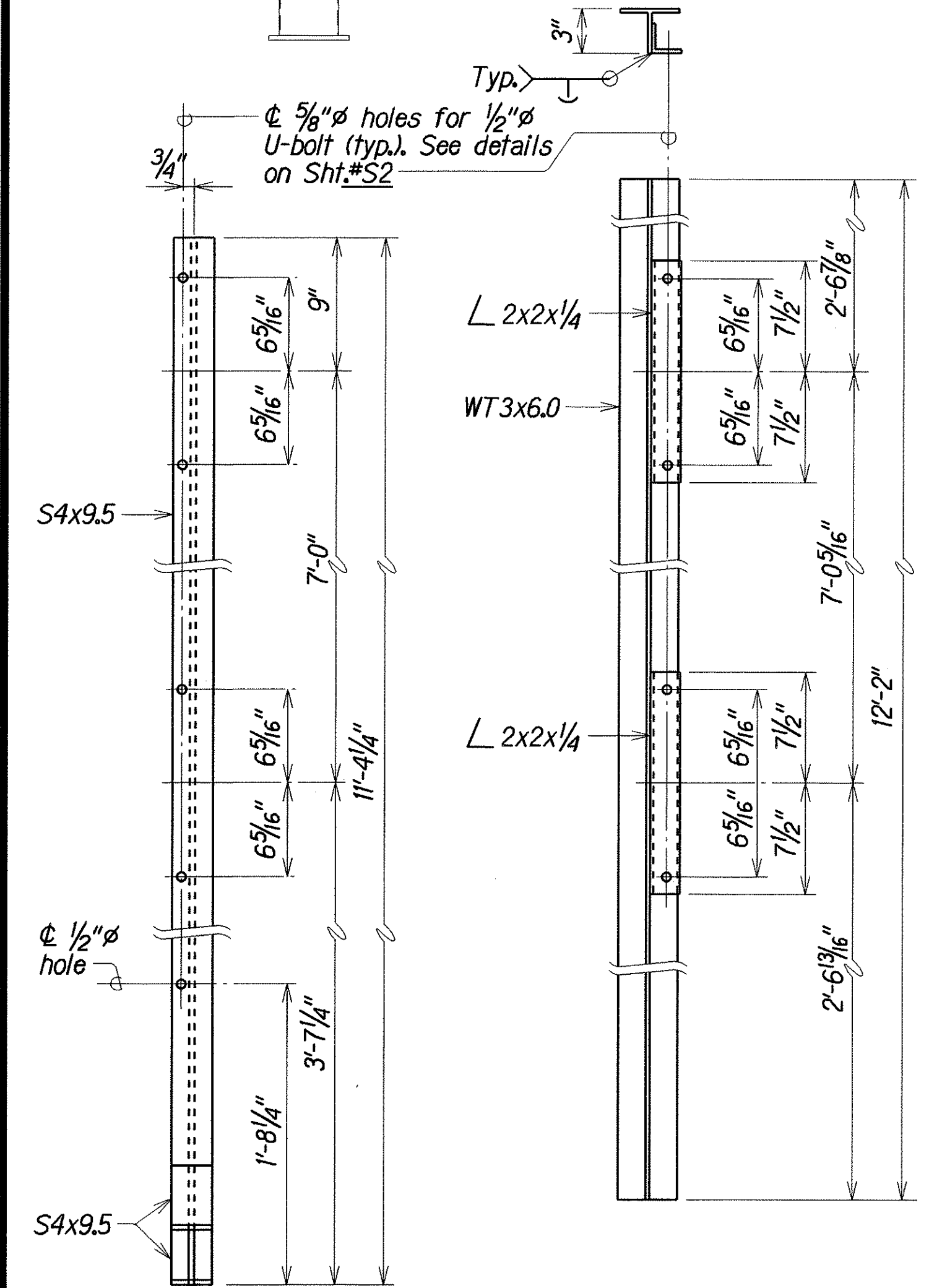


GENERAL NOTES

- Steel members shall be ASTM A 36 and shall be hot-dip galvanized after fabrication.
- The Contractor shall be solely responsible for the protection of adjacent property, utilities, existing and new structures from damage at his expense to the satisfaction of the Engineer. He shall conduct his work in such a manner and provide temporary shoring or other measures as may be necessary to insure the safety of all concerned.
- The Contractor shall field verify all dimensions before commencing with any work.
- The Contractor shall use dye penetrant testing in accordance with the Specs to test the existing welds between the end posts and the 1/2" cap plates and the 3/4" plates. Any damaged welds shall be removed and re-welded. Any damaged or bent 1/2" cap plates or 3/4" plates shall be replaced with new plates.

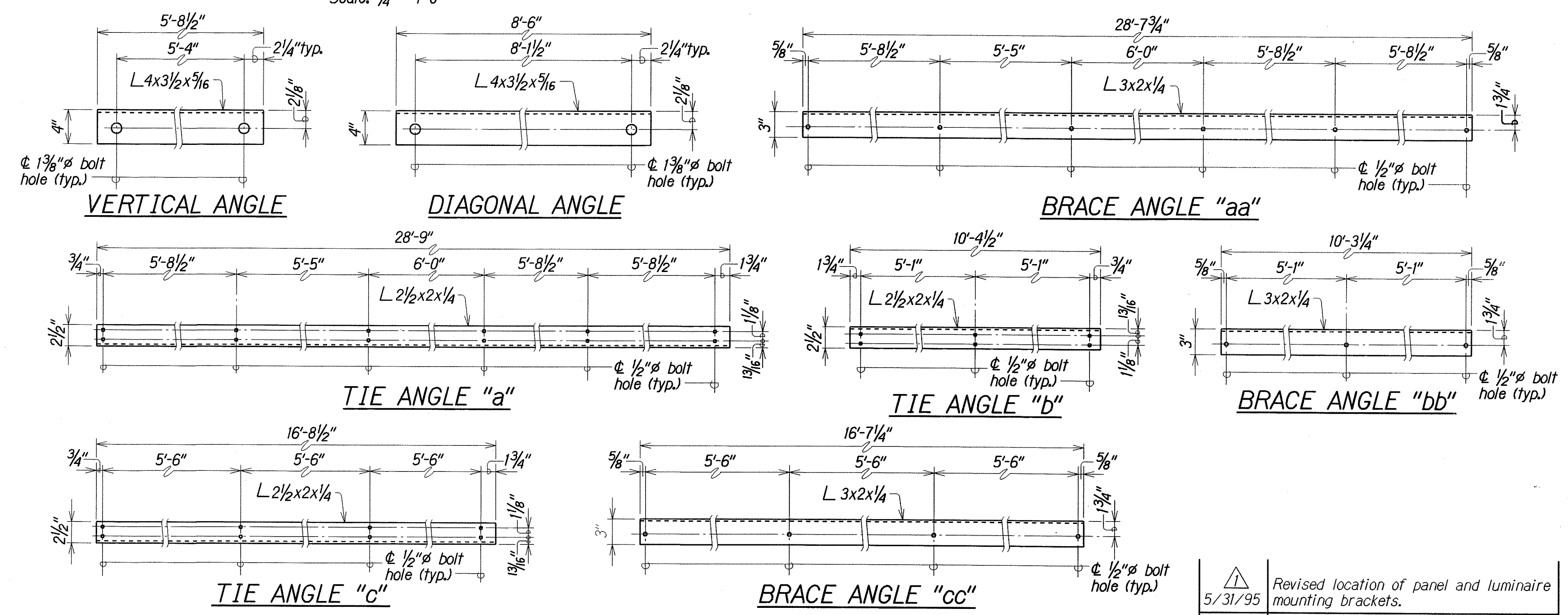
ELEVATION SIGN E-7

Scale: 1/4" = 1'-0"



LUMINAIRE MOUNTING BRACKET

PANEL MOUNTING BRACKET



TYPICAL BRACKET AND ANGLE DETAILS

Scale: 1/2" = 1'-0"

ESTIMATED QUANTITIES			
ITEM NO.	DESCRIPTION	UNIT	QUANTITY
621.2700	Structural Steel for Replacement of Overhead E-7 Designation Sign	L.S.	(20,736)

ITEM	QUANTITY
Luminaire Mounting Bracket	13
Panel Mounting Bracket	9
Vertical Angle	2
Diagonal Angle	14
Tie Angle "a"	1
Tie Angle "b"	1
Tie Angle "c"	1
Brace Angle "aa"	1
Brace Angle "bb"	1
Brace Angle "cc"	1

DESIGNED BY	DATE
THL RSC	MAY 1994
TRACED BY	DATE
JFI	MAY 1994
QUANTITIES BY	DATE
MS	MAY 1994
CHECKED BY	DATE

Revised location of panel and luminaire mounting brackets.
5/31/95

DATE	REVISION

STATE OF HAWAII
DEPARTMENT OF TRANSPORTATION
HIGHWAYS DIVISION

**ELEVATION,
BRACKET AND ANGLE DETAILS**

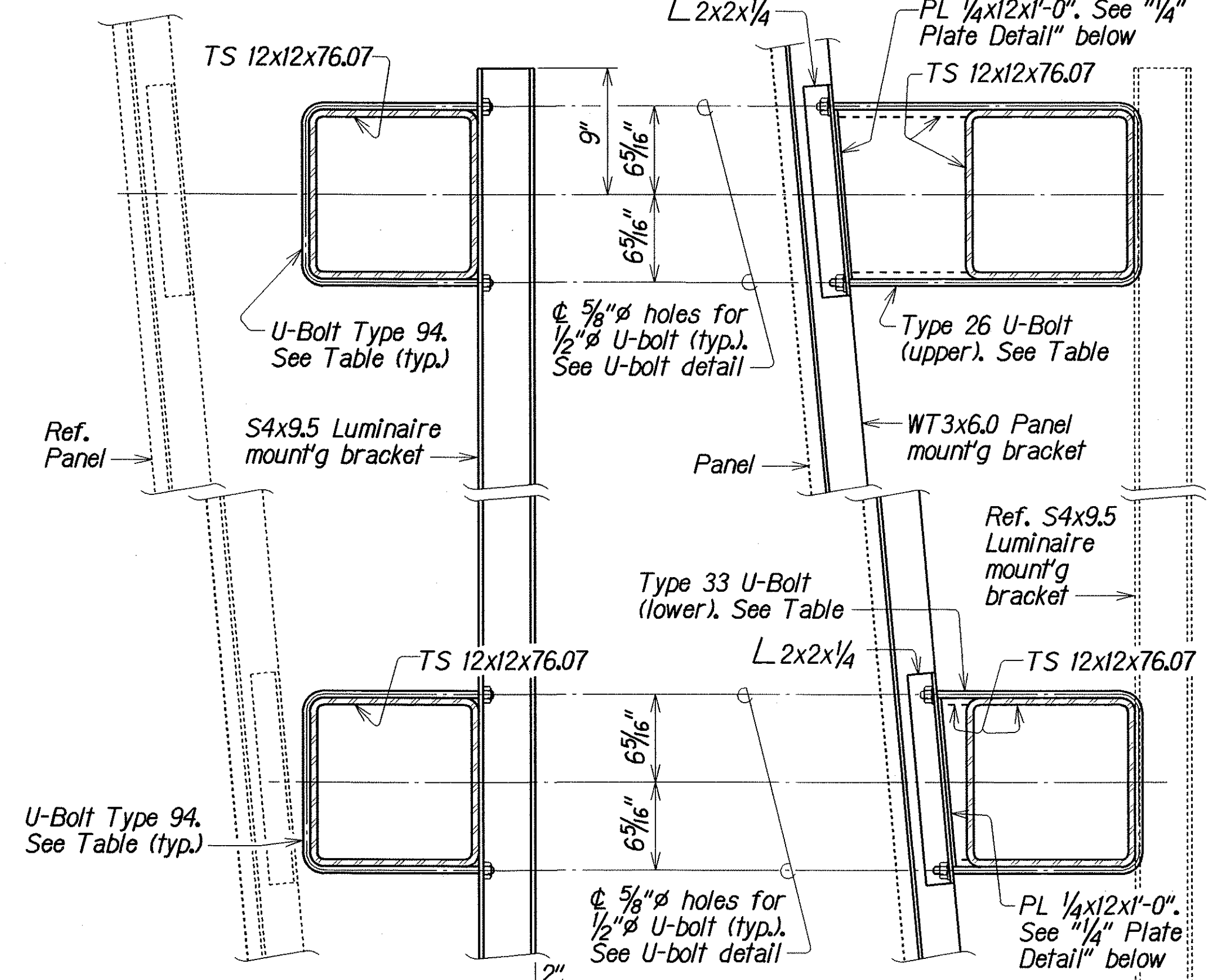
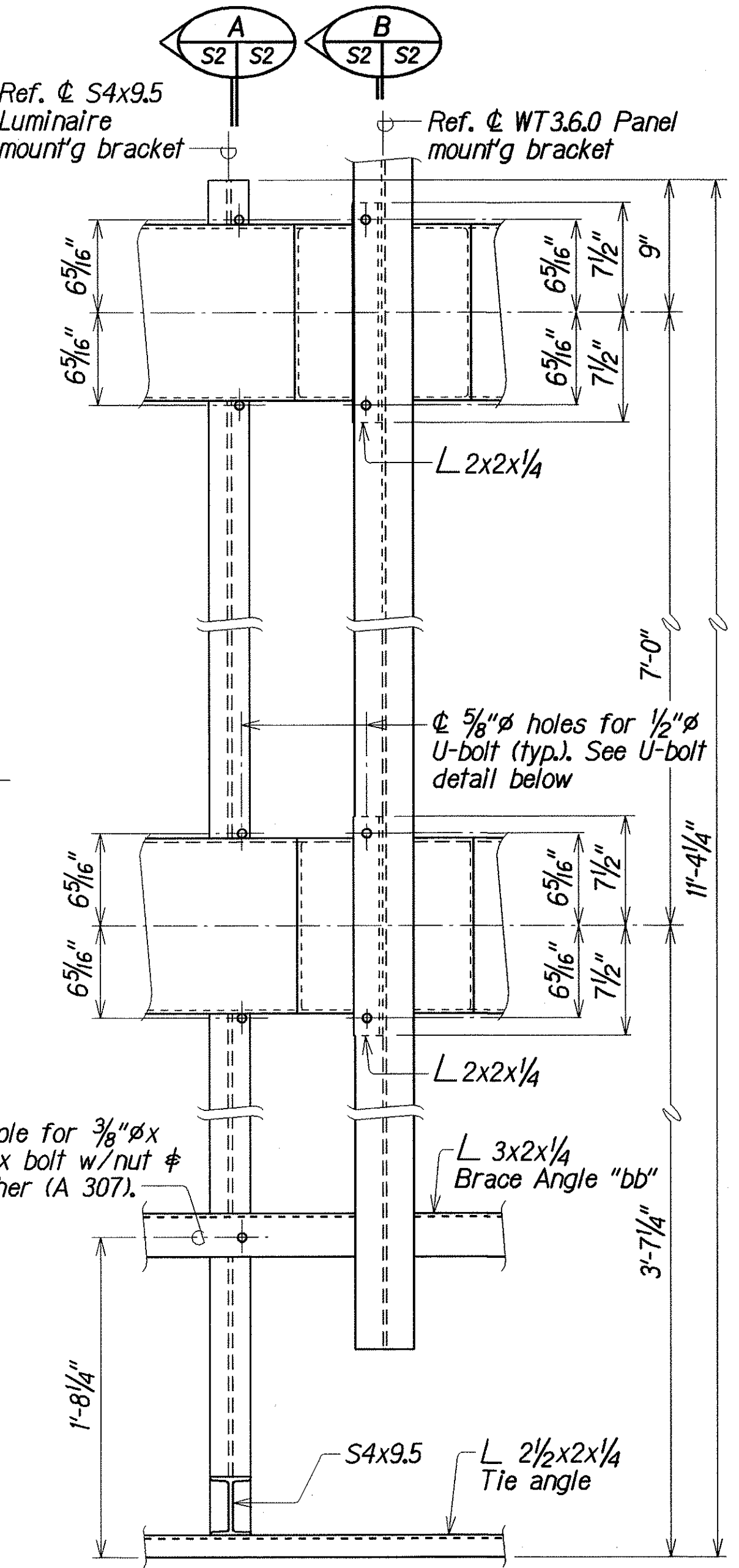
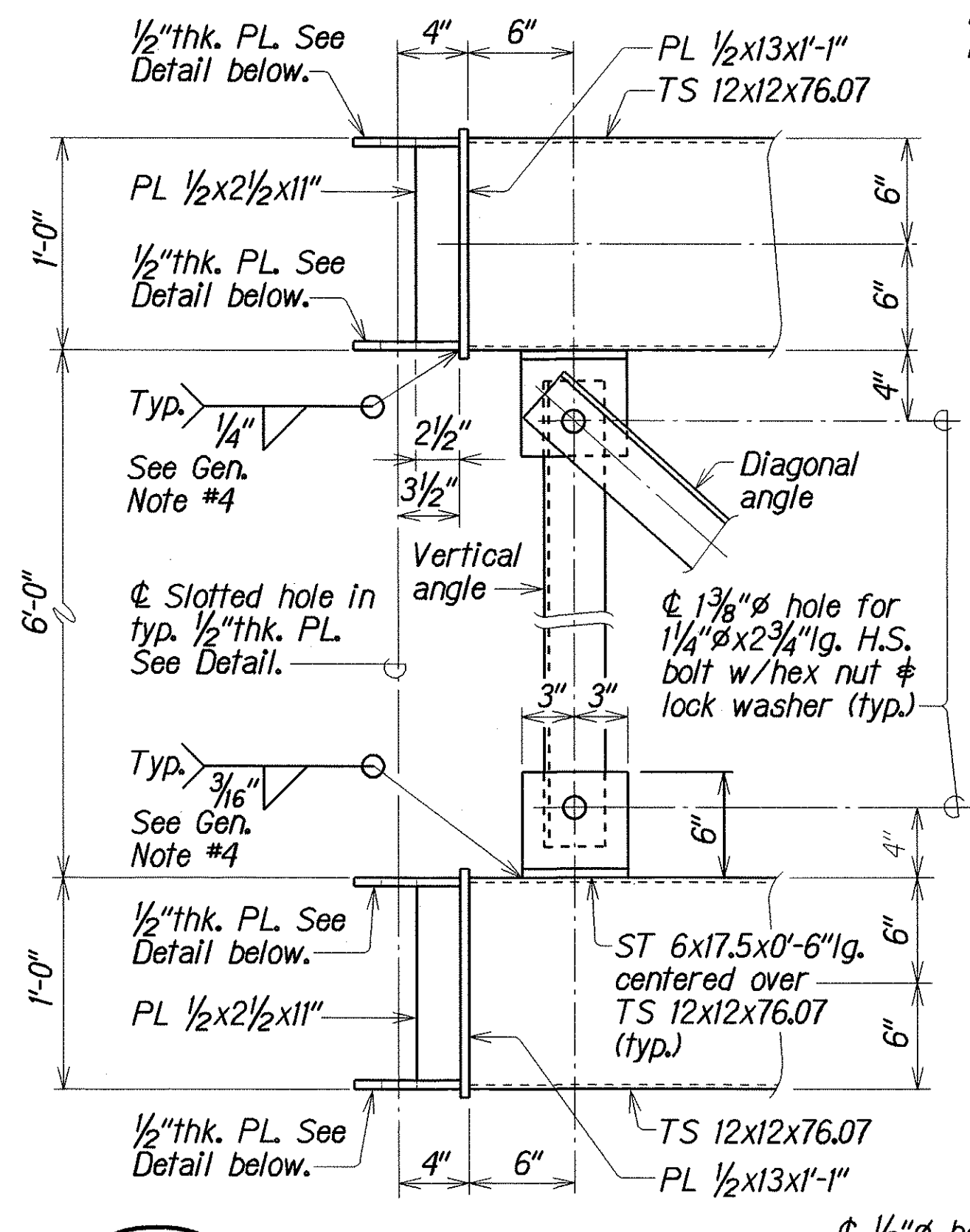
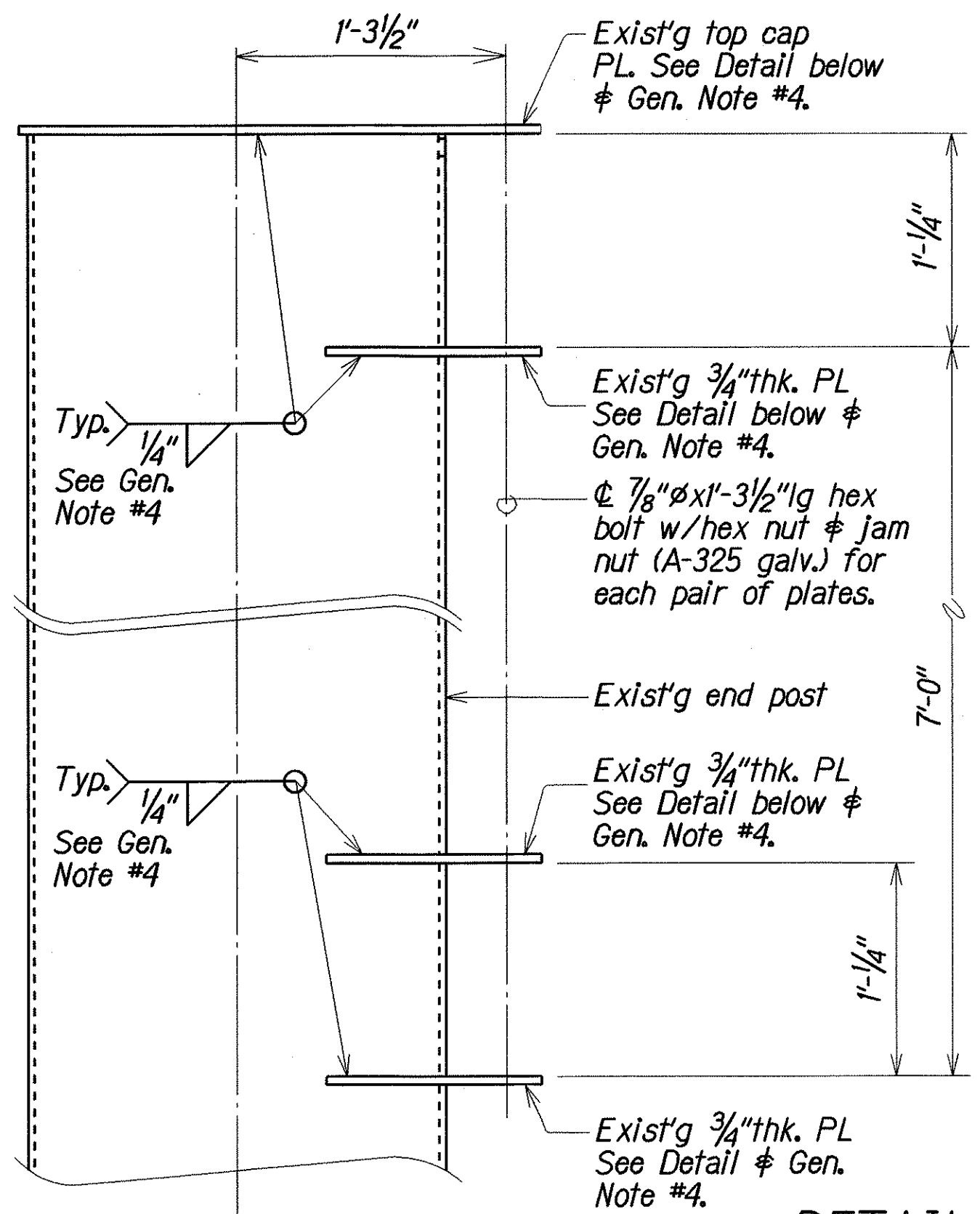
REPLACEMENT OF OVERHEAD E-7
DESIGNATION SIGN AT M.P. 15.6
@ STA. 105+00 INTERSTATE H-1 (WEST BOUND)
Project No. HIG-01-95M

Scale: As Noted Date: May, 1994

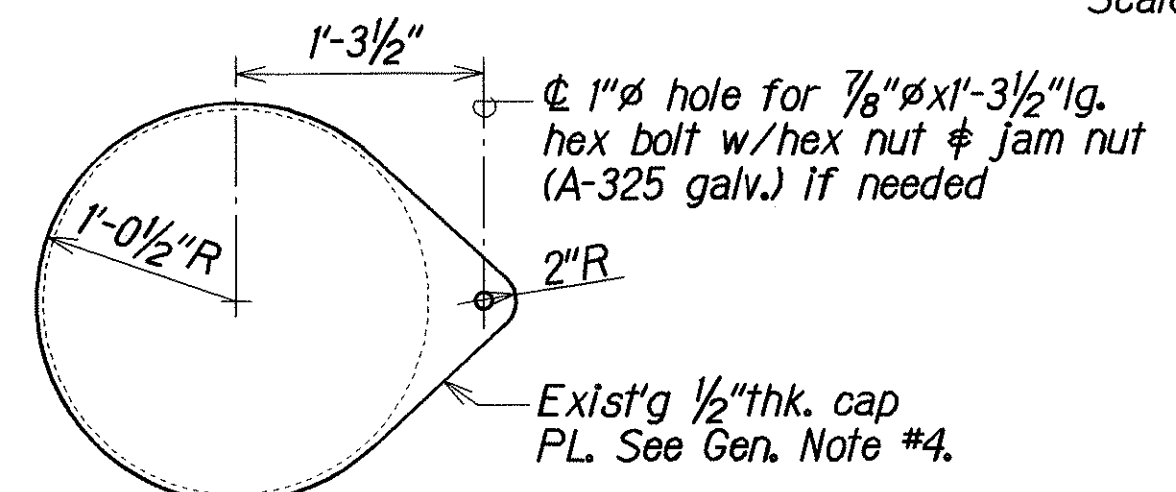
FED. ROAD DIST. NO.	STATE	PROJ. NO.	FISCAL YEAR	SHEET NO.	TOTAL SHEETS
HAWAII	HAW.	HIG-01-95M	1995	5	7

CHANGES MADE DURING CONSTRUCTION HAVE BEEN MADE TO THIS DRAWING EXCEPT CHANGES IN THE ORIGINAL THEORETICAL QUANTITIES. FOR ACTUAL QUANTITIES, REFER TO PROJECT LEDGER AND/OR COMPUTATION BOOK.

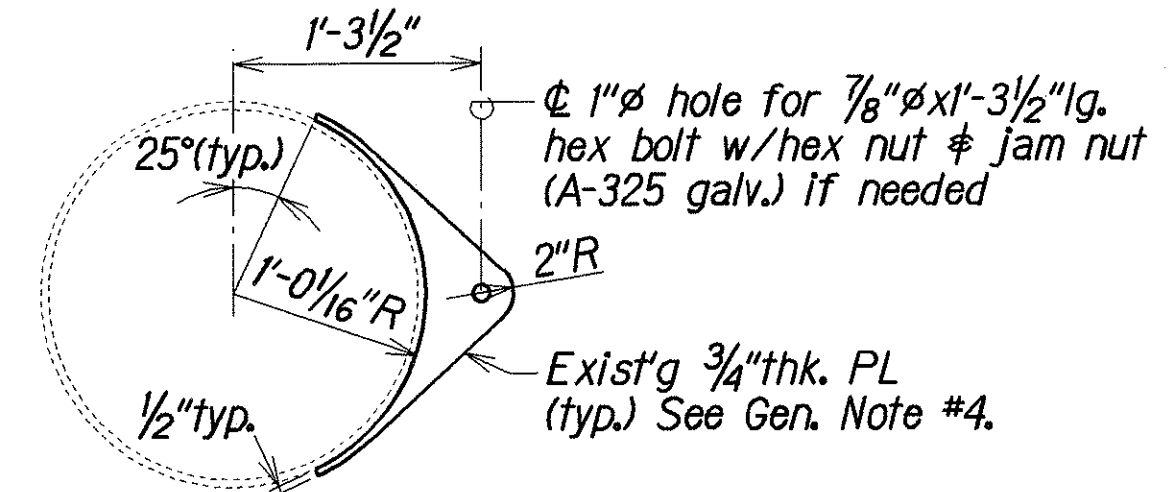
RESIDENT ENGINEER
 DATE



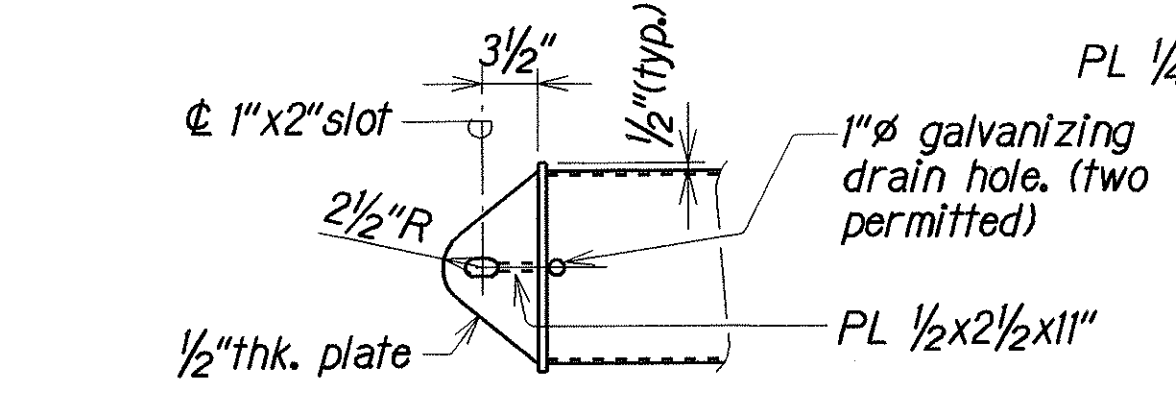
DETAIL 1
Scale: 1/2" = 1'-0"



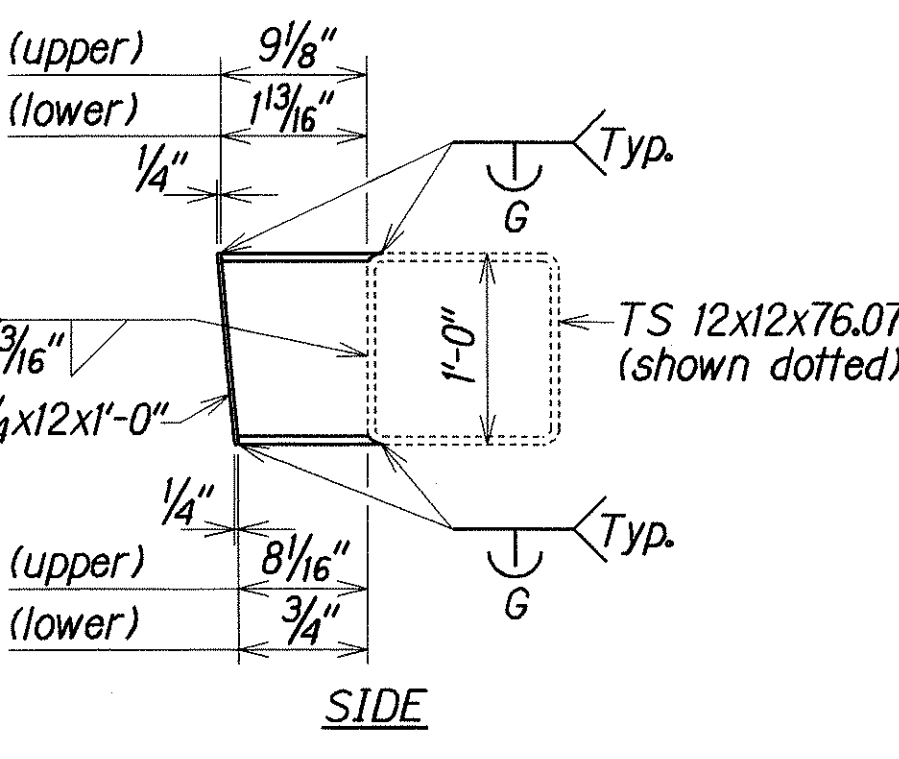
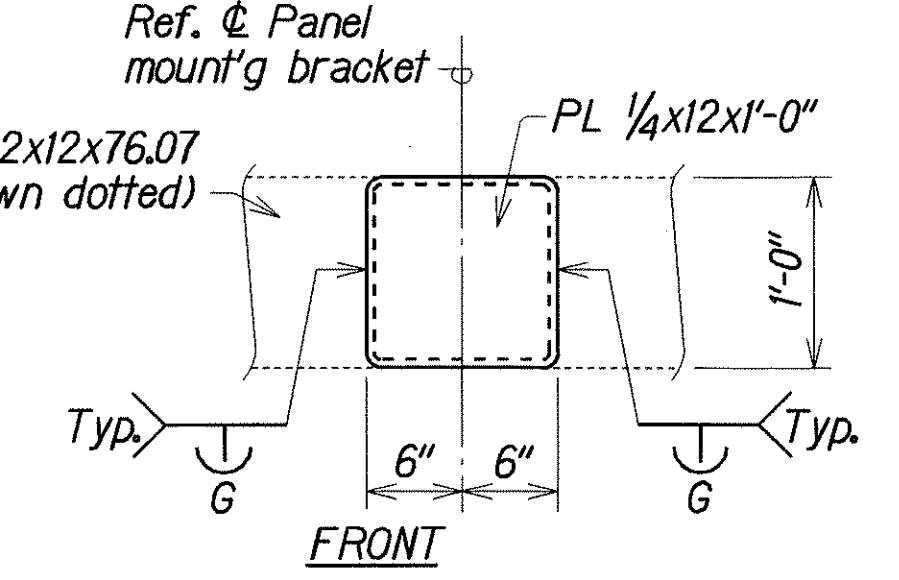
TOP CAP PLATE DETAIL
Scale: 1" = 1'-0"



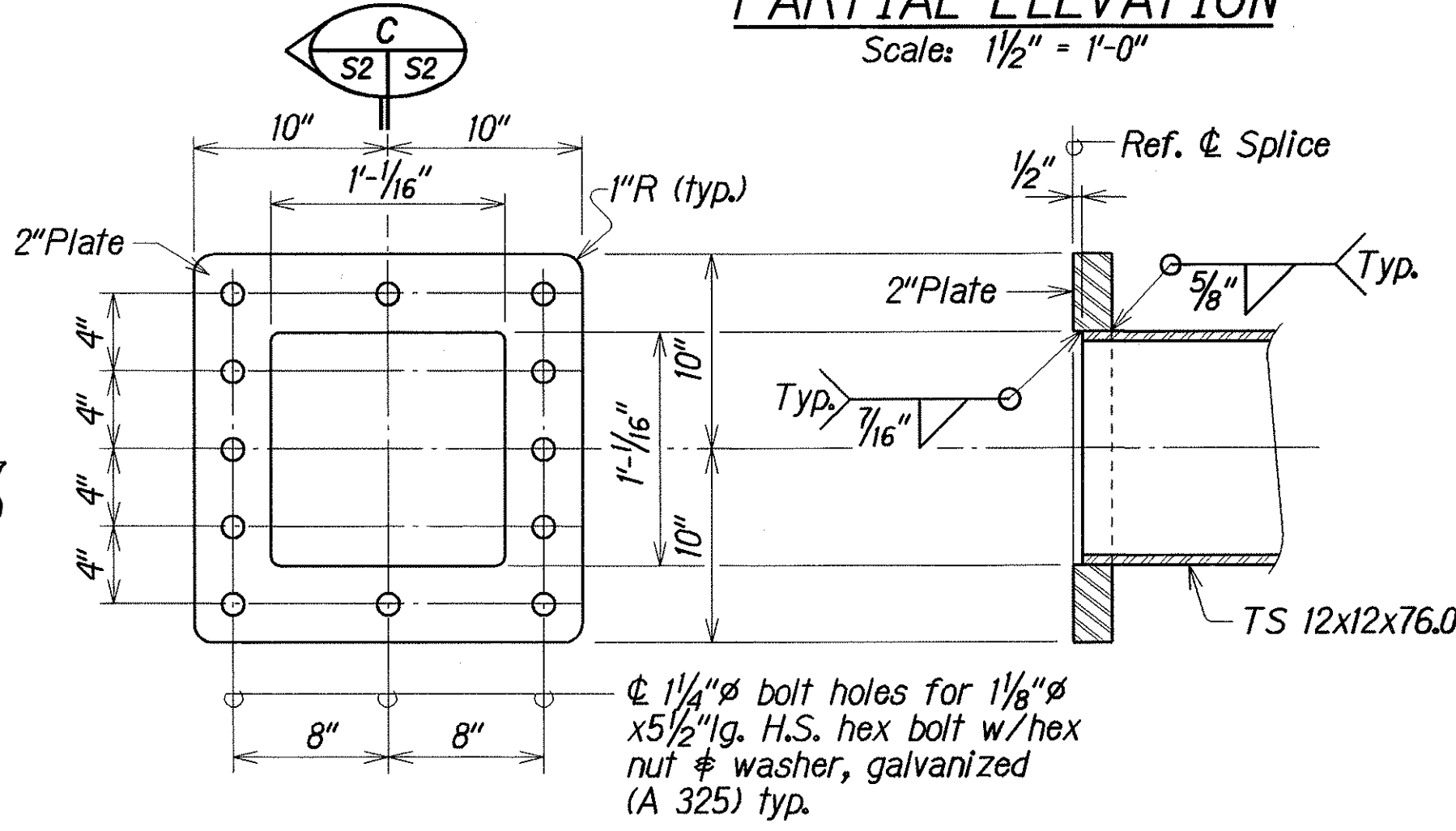
3/4" PLATE DETAIL
Scale: 1" = 1'-0"



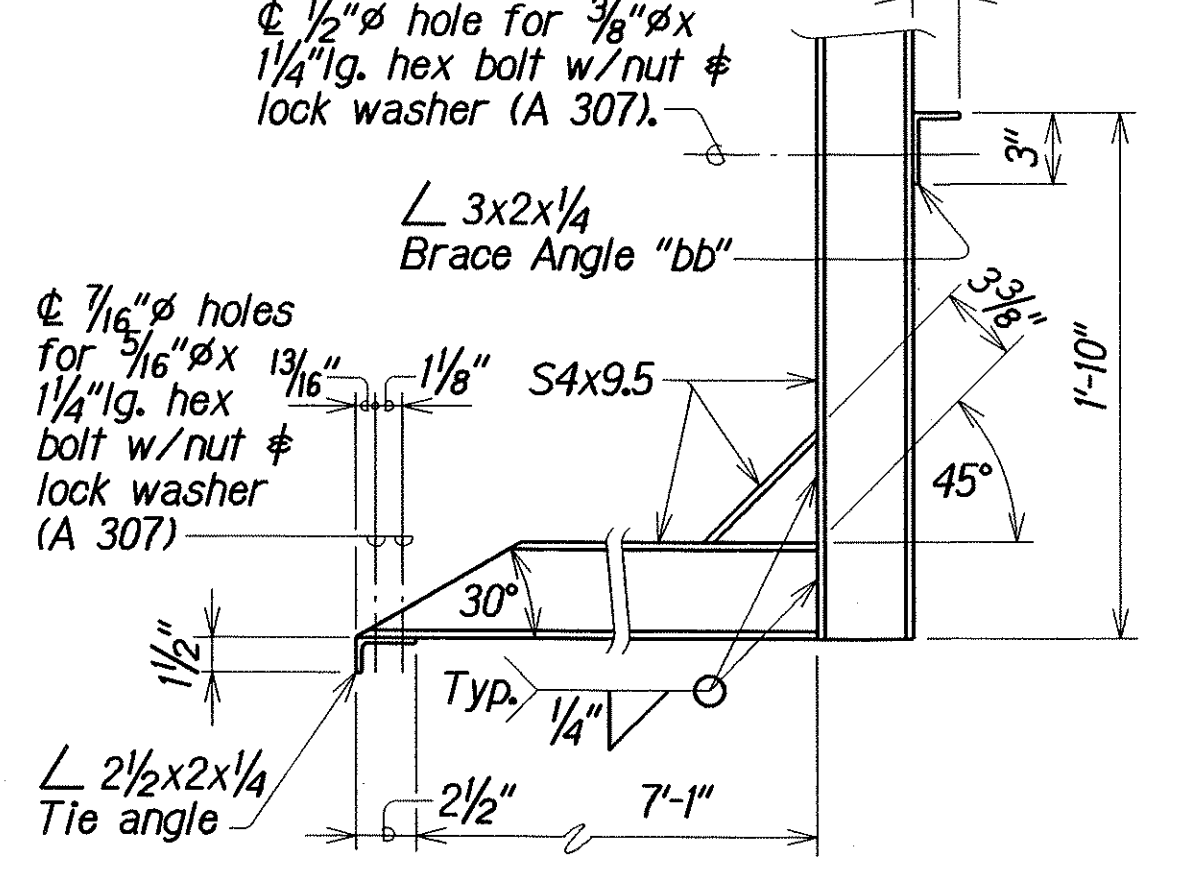
1/2" PLATE DETAIL (TYPICAL)
Scale: 1" = 1'-0"



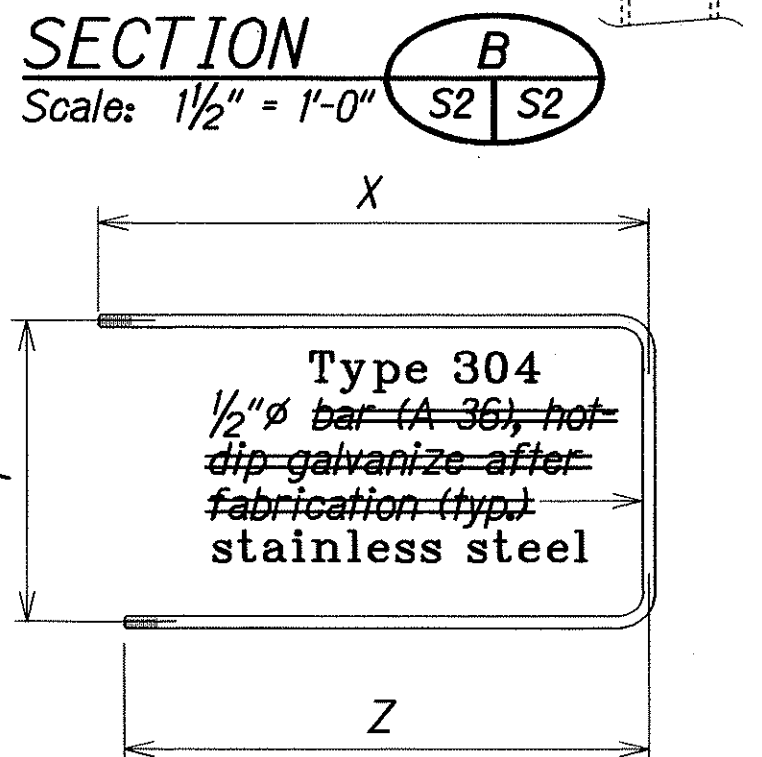
1/4" PLATE DETAIL
Scale: 1" = 1'-0"



SPLICE DETAIL 2
Scale: 1/2" = 1'-0"



SECTION A
Scale: 1/2" = 1'-0"



U-BOLT DETAIL
Not to Scale

U-BOLT DIMENSIONS

TYPE	Location	X	Y	Z	Quan.
26	upper	1'-11 3/8"	1'-0 5/8"	1'-10 3/8"	9
33	lower	1'-4 1/8"	1'-0 5/8"	1'-3"	9
94	both	1'-2 1/4"	1'-0 5/8"	1'-2 1/4"	26

LEGEND FOR AS-BUILT POSTINGS

-----	Squiggly line for as-built deletion
====	Double line for as-built deletion
Roadway	Text for as-built posting

STATE OF HAWAII
 DEPARTMENT OF TRANSPORTATION
 HIGHWAYS DIVISION
SECTIONS AND DETAILS
REPLACEMENT OF OVERHEAD E-7 DESIGNATION SIGN AT MP. 15.6
 @ STA. 105+00 INTERSTATE H-1 (WESTBOUND)
 Project No. HIG-01-95M
 Scale: As Noted Date: May, 1994

DESIGNED BY	DATE
DRAWN BY	MAY 1994
TRACED BY	MAY 1994
DESIGNED BY	MAY 1994
QUANTITIES BY	MAY 1994
CHECKED BY	