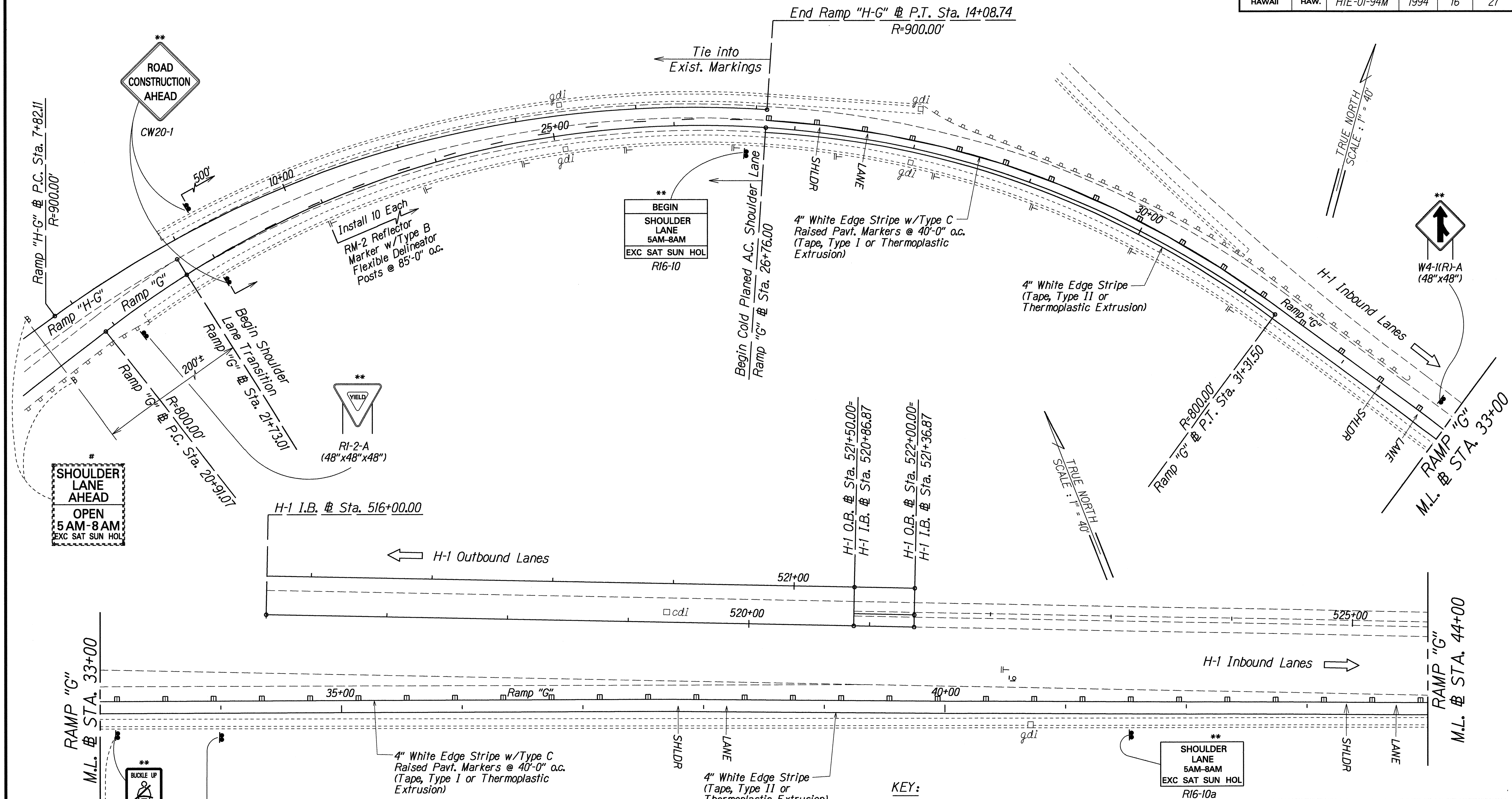


FED. ROAD DIST. NO.	STATE	PROJ. NO.	FISCAL YEAR	SHEET NO.	TOTAL SHEETS
HAWAII	HAW.	HIE-01-94M	1994	16	27



ORIGINAL PLAN	DATE
SURVEY PLOTTED BY	3/94
DRAWN BY	Elaine Loh
DESIGNED BY	George Loh
CHECKED BY	George Loh
NOTED BY	George Loh
DATE	3/94

KEY:

- * Remove Exist. Sign(s) & Post(s)
- ** Remove Exist. & Install New Sign(s) and Post(s)
- *** Remove Exist. & Install New Sign(s) on Exist. Highway Lighting Standard or Traffic Signal Standard
- **** Install New Sign(s) w/Post(s)
- ***** Install New Sign(s) on Exist. Highway Lighting Standard or Traffic Signal Standard
- # Exist. Sign(s) to Remain

STATE OF HAWAII
DEPARTMENT OF TRANSPORTATION
HIGHWAYS DIVISION

PAVEMENT MARKING & STRIPING PLAN

RTE. H-1 INBOUND SHLDR. LANE RESURF.

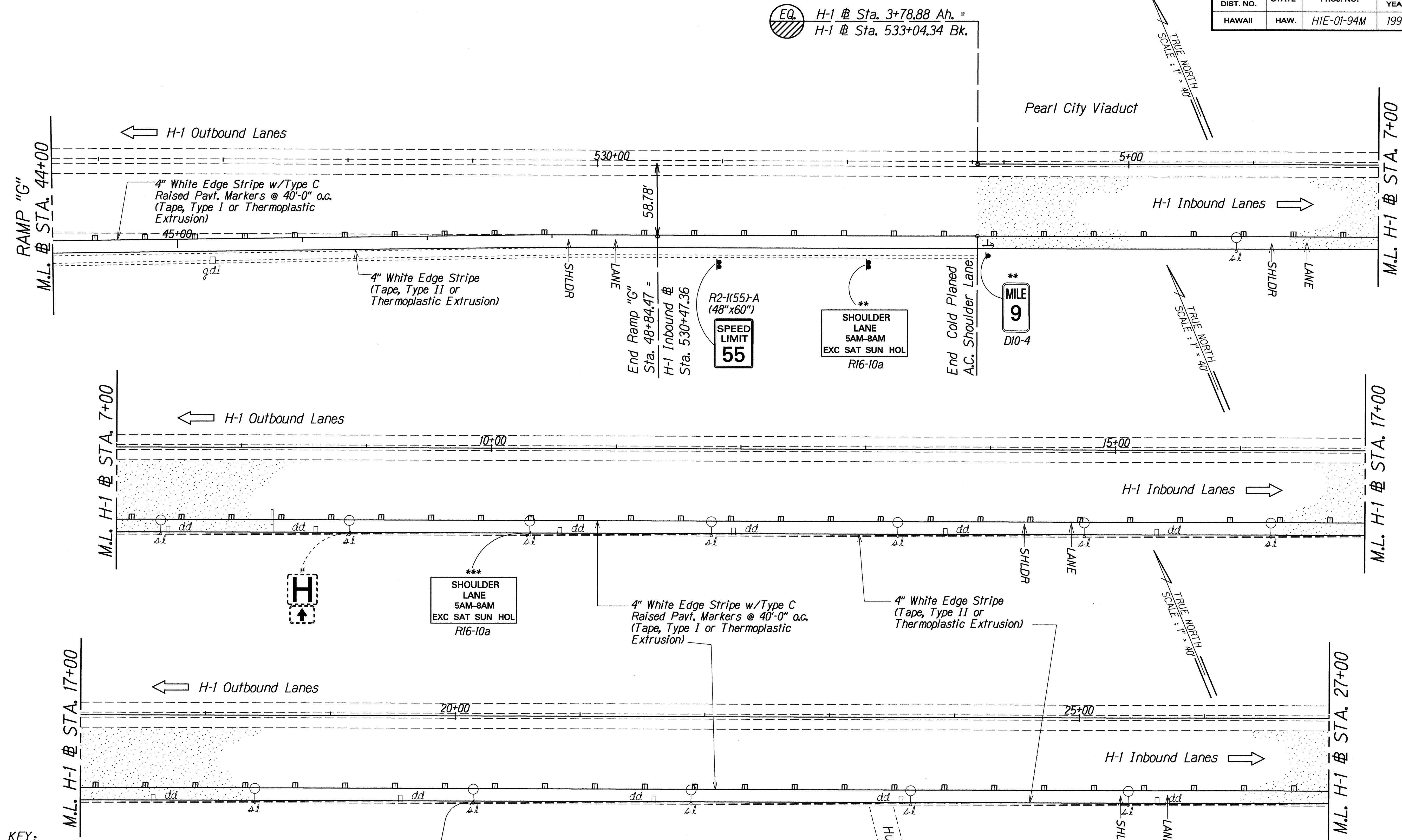
Waiawa Interchange On-Ramp to
Moanalua Off-Ramp

Project No. HIE-01-94M

Scale: 1"=40' Date: Mar., 1994

SHEET No. T2 OF 13 SHEETS

FED. ROAD DIST. NO.	STATE	PROJ. NO.	FISCAL YEAR	SHEET NO.	TOTAL SHEETS
HAWAII	HAW.	HIE-01-94M	1994	17	27



- KEY:**
- * Remove Exist. Sign(s) & Post(s)
 - ** Remove Exist. & Install New Sign(s) and Post(s)
 - *** Remove Exist. & Install New Sign(s) on Exist. Highway Lighting Standard or Traffic Signal Standard
 - **** Install New Sign(s) w/Post(s)
 - ***** Install New Sign(s) on Exist. Highway Lighting Standard or Traffic Signal Standard
 - # Exist. Sign(s) to Remain

STATE OF HAWAII
DEPARTMENT OF TRANSPORTATION
HIGHWAYS DIVISION

PAVEMENT MARKING & STRIPING PLAN

RTE. H-1 INBOUND SHLDR. LANE RESURF.

Waiawa Interchange On-Ramp to Moanalua Off-Ramp

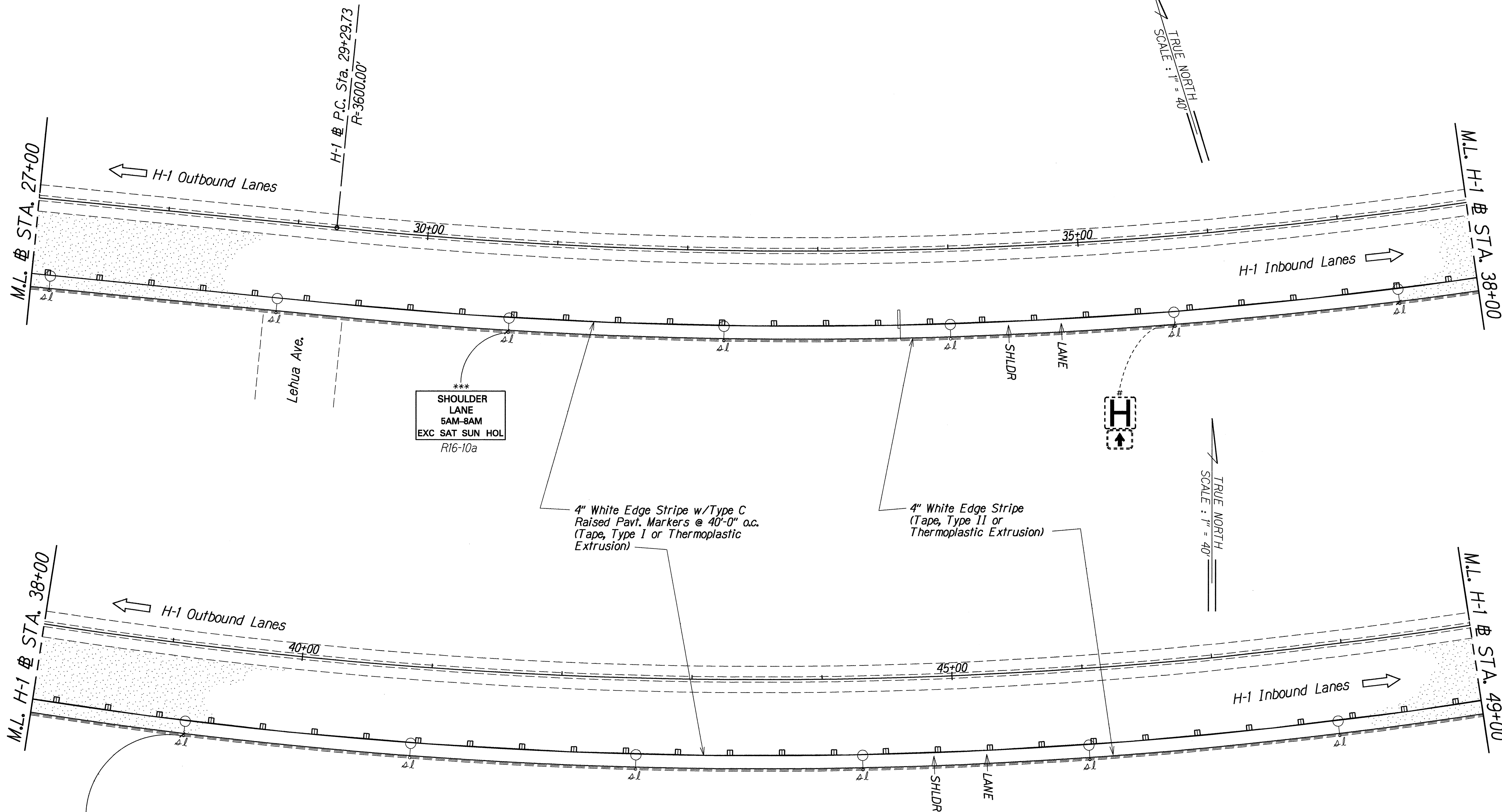
Project No. HIE-01-94M

Scale: 1"=40' Date: Nov., 1993

SHEET No. T3 OF 13 SHEETS

ORIGINAL PLAN	DATE
SURVEY PLOTTED BY	3/94
DRAWN BY Elaine Isobe	
DESIGNED BY George Tanaka	
CHECKED BY	
NOTES	
10/2/94	
10/2/94	

FED. ROAD DIST. NO.	STATE	PROJ. NO.	FISCAL YEAR	SHEET NO.	TOTAL SHEETS
HAWAII	HAW.	HIE-01-94M	1994	18	27



ORIGINAL PLAN	SURVEY PLOTTED BY	DATE
NOTE BOOK	DRAWN BY	3/94
TELEPHONE	CHECKED BY	
N. SHIPMAN		

KEY:

- * Remove Exist. Sign(s) & Post(s)
- ** Remove Exist. & Install New Sign(s) and Post(s)
- *** Remove Exist. & Install New Sign(s) on Exist. Highway Lighting Standard or Traffic Signal Standard
- **** Install New Sign(s) w/Post(s)
- ***** Install New Sign(s) on Exist. Highway Lighting Standard or Traffic Signal Standard
- * Exist. Sign(s) to Remain

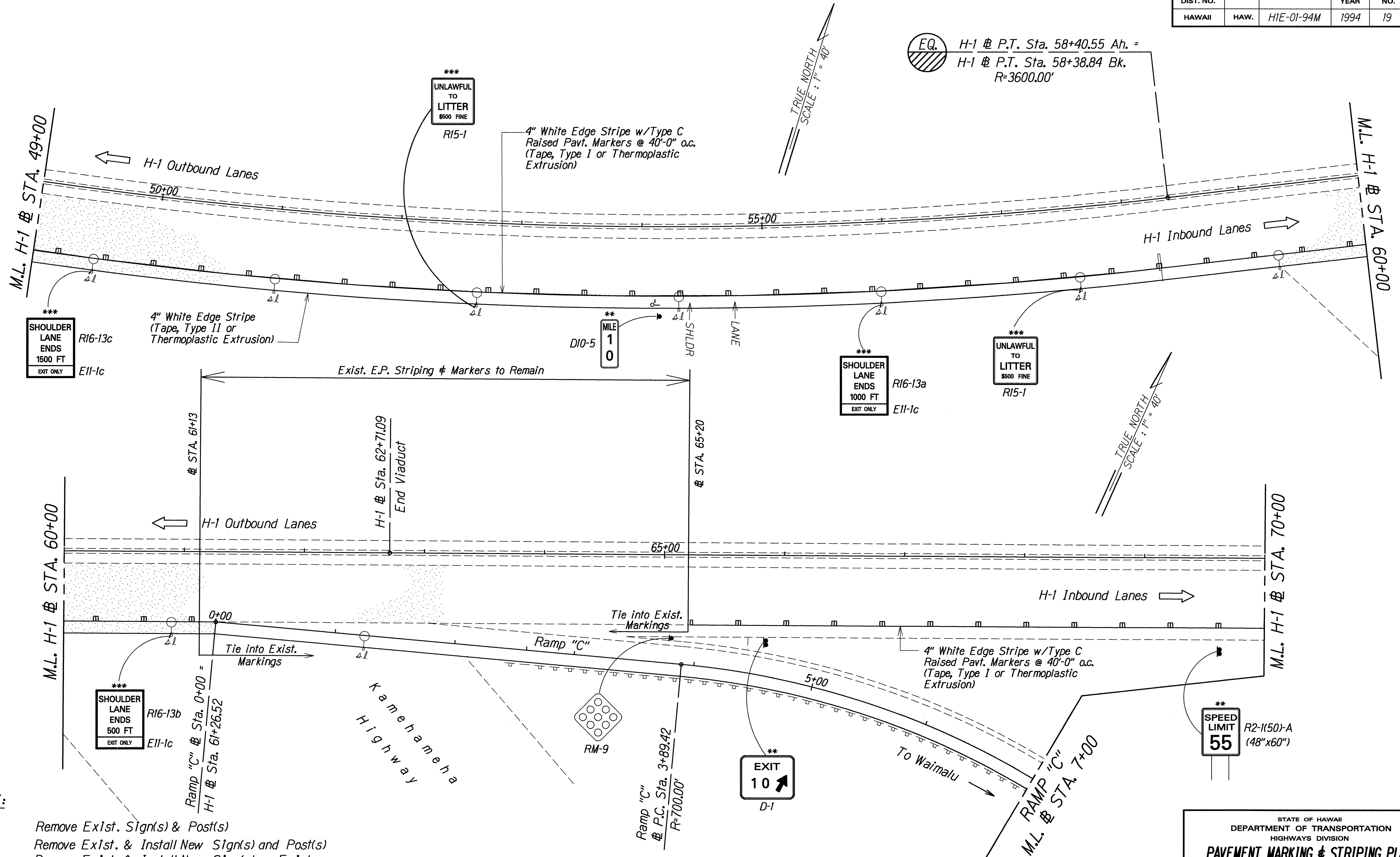
STATE OF HAWAII
DEPARTMENT OF TRANSPORTATION
HIGHWAYS DIVISION

PAVEMENT MARKING & STRIPING PLAN
RTE. H-1 INBOUND SHLDR. LANE RESURF.
Waiawa Interchange On-Ramp to Moanalua Off-Ramp
Project No. HIE-01-94M

Scale: 1"=40' Date: Mar., 1994

SHEET No. 14 OF 13 SHEETS

FED. ROAD DIST. NO.	STATE	PROJ. NO.	FISCAL YEAR	SHEET NO.	TOTAL SHEETS
HAWAII	HAW.	H1E-01-94M	1994	19	27



- KEY:
- * Remove Exist. Sign(s) & Post(s)
 - ** Remove Exist. & Install New Sign(s) and Post(s)
 - *** Remove Exist. & Install New Sign(s) on Exist. Highway Lighting Standard or Traffic Signal Standard
 - **** Install New Sign(s) w/Post(s)
 - ***** Install New Sign(s) on Exist. Highway Lighting Standard or Traffic Signal Standard
 - # Exist. Sign(s) to Remain

ORIGINAL PLAN	SURVEY PLOTTED BY	DATE
NOTED BOOK	DRAWN BY	3/94
QUANTITIES BY	TRACED BY	
CHECKED BY	NOTED BY	

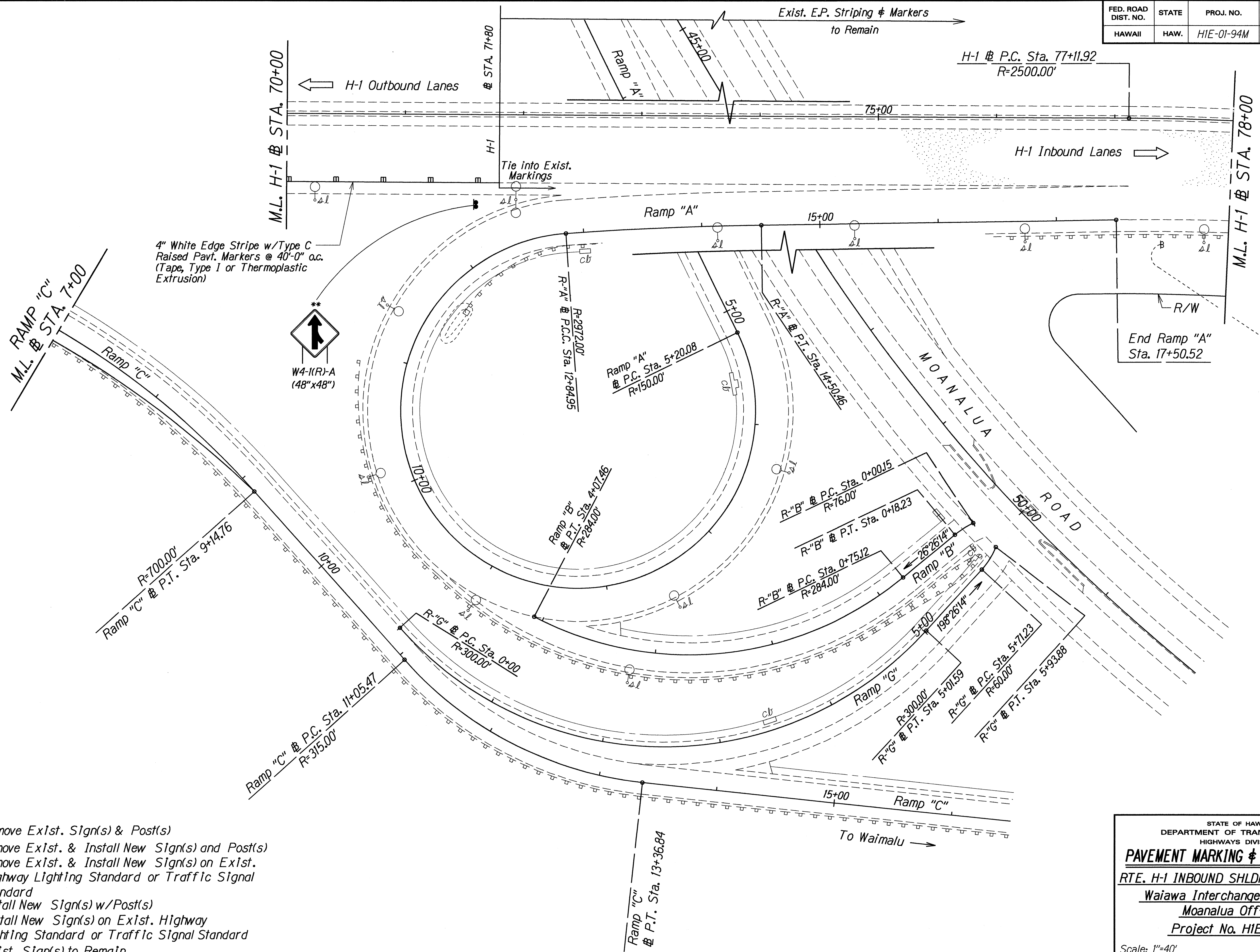
STATE OF HAWAII
DEPARTMENT OF TRANSPORTATION
HIGHWAYS DIVISION

PAVEMENT MARKING & STRIPING PLAN
RTE. H-1 INBOUND SHLDR. LANE RESURF.
Waiawa Interchange On-Ramp to
Moanalua Off-Ramp
Project No. H1E-01-94M

Scale: 1"=40'
Date: Nov., 1993

SHEET No. 15 OF 13 SHEETS

FED. ROAD DIST. NO.	STATE	PROJ. NO.	FISCAL YEAR	SHEET NO.	TOTAL SHEETS
HAWAII	HAW.	H1E-01-94M	1994	20	27



BEGIN
SHOULDER LANE
5AM-8AM
EXC SAT SUN HOL
NO TRUCKS
OR BUSES

KEY:

- * Remove Exist. Sign(s) & Post(s)
- ** Remove Exist. & Install New Sign(s) and Post(s)
- *** Remove Exist. & Install New Sign(s) on Exist. Highway Lighting Standard or Traffic Signal Standard
- **** Install New Sign(s) w/Post(s)
- ***** Install New Sign(s) on Exist. Highway Lighting Standard or Traffic Signal Standard
- # Exist. Sign(s) to Remain

SURVEY PLOTTED BY	DATE
DRAWN BY	3/94
TRACED BY	
CHECKED BY	
NOTE BOOK	
DATE	
CHECKED BY	

STATE OF HAWAII
DEPARTMENT OF TRANSPORTATION
HIGHWAYS DIVISION

PAVEMENT MARKING & STRIPING PLAN

RTE. H-1 INBOUND SHLDR. LANE RESURF.

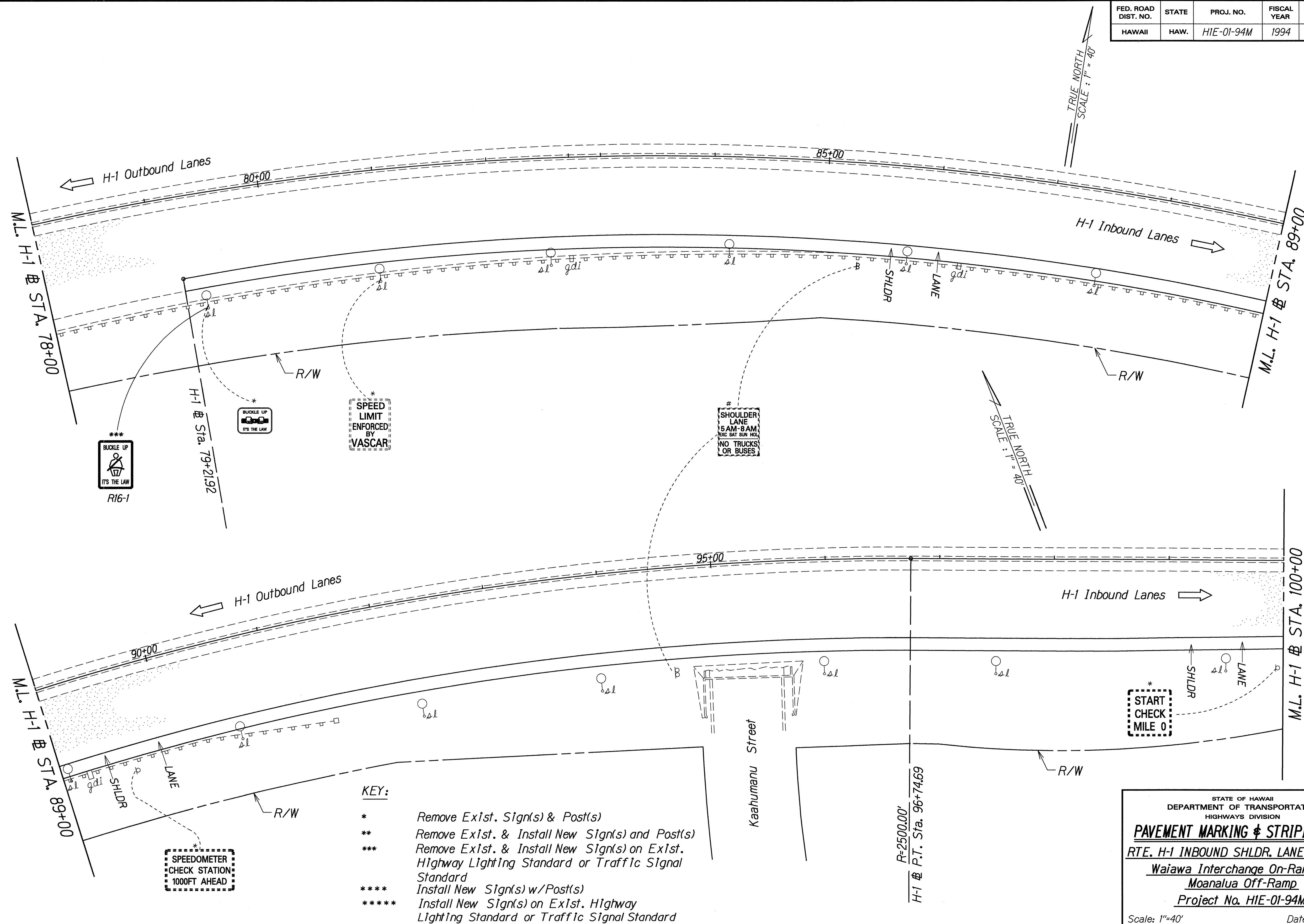
Waiawa Interchange On-Ramp to Moanalua Off-Ramp

Project No. H1E-01-94M

Scale: 1"=40' Date: Mar., 1994

SHEET No. 76 OF 13 SHEETS

FED. ROAD DIST. NO.	STATE	PROJ. NO.	FISCAL YEAR	SHEET NO.	TOTAL SHEETS
HAWAII	HAW.	H1E-01-94M	1994	21	27



ORIGINAL PLAN	SURVEY PLOTTED BY	DATE
NOTE BOOK	DRAWN BY	3/94
TABLET	TRACED BY	
STATIONING	CHECKED BY	
PLAN		

STATE OF HAWAII
DEPARTMENT OF TRANSPORTATION
HIGHWAYS DIVISION

PAVEMENT MARKING & STRIPING PLAN

RTE. H-1 INBOUND SHLDR. LANE RESURF.

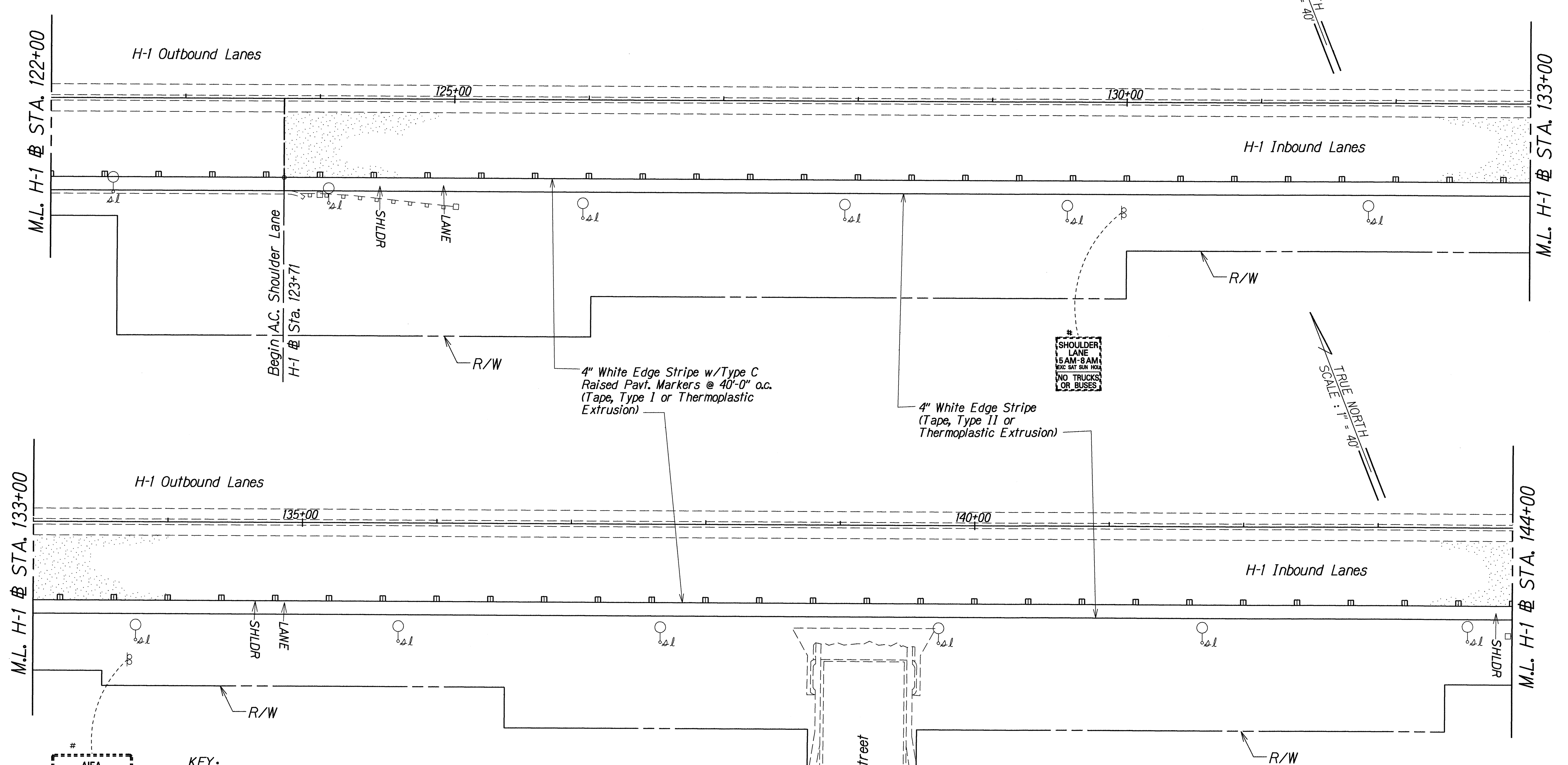
Waiawa Interchange On-Ramp to Moanalua Off-Ramp

Project No. H1E-01-94M

Scale: 1"=40' Date: Mar., 1994

SHEET No. 77 OF 13 SHEETS

FED. ROAD DIST. NO.	STATE	PROJ. NO.	FISCAL YEAR	SHEET NO.	TOTAL SHEETS
HAWAII	HAW.	HIE-01-94M	1994	23	27



AIEA
MOANALUA
EXIT 1 1/4 MILES

- KEY:**
- * Remove Exist. Sign(s) & Post(s)
 - ** Remove Exist. & Install New Sign(s) and Post(s)
 - *** Remove Exist. & Install New Sign(s) on Exist. Highway Lighting Standard or Traffic Signal Standard
 - **** Install New Sign(s) w/Post(s)
 - ***** Install New Sign(s) on Exist. Highway Lighting Standard or Traffic Signal Standard
 - # Exist. Sign(s) to Remain

ORIGINAL PLAN	SURVEY PLOTTED BY	DATE
NOTE BOOK	DRAWN BY Elaine Isoda	3/94
DESIGNED BY	CHECKED BY	
Shirley		

STATE OF HAWAII
DEPARTMENT OF TRANSPORTATION
HIGHWAYS DIVISION

PAVEMENT MARKING & STRIPING PLAN

RTE. H-1 INBOUND SHLDR. LANE RESURF.

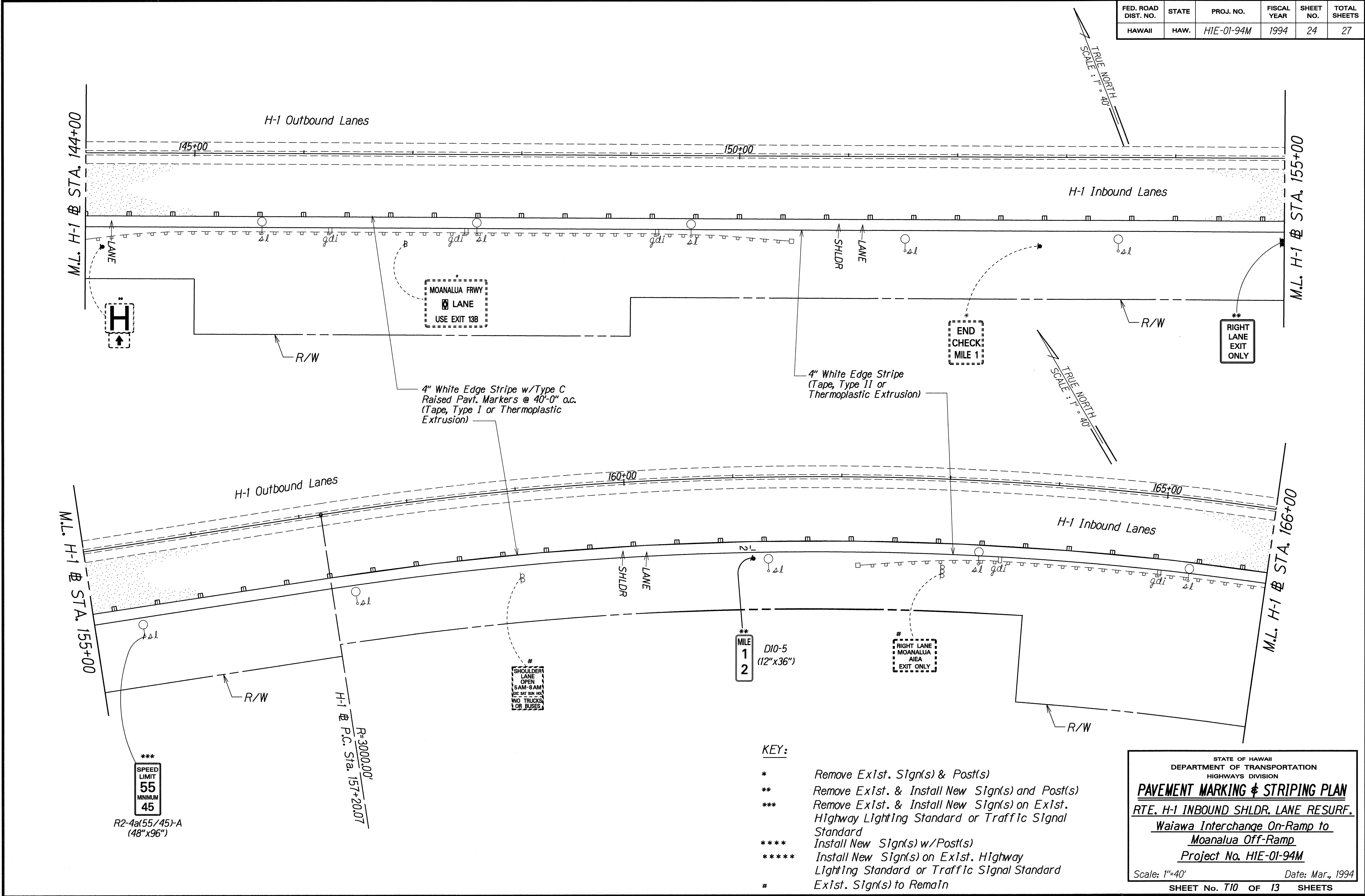
Waiawa Interchange On-Ramp to
Moanalua Off-Ramp

Project No. HIE-01-94M

Scale: 1"=40' Date: Mar., 1994

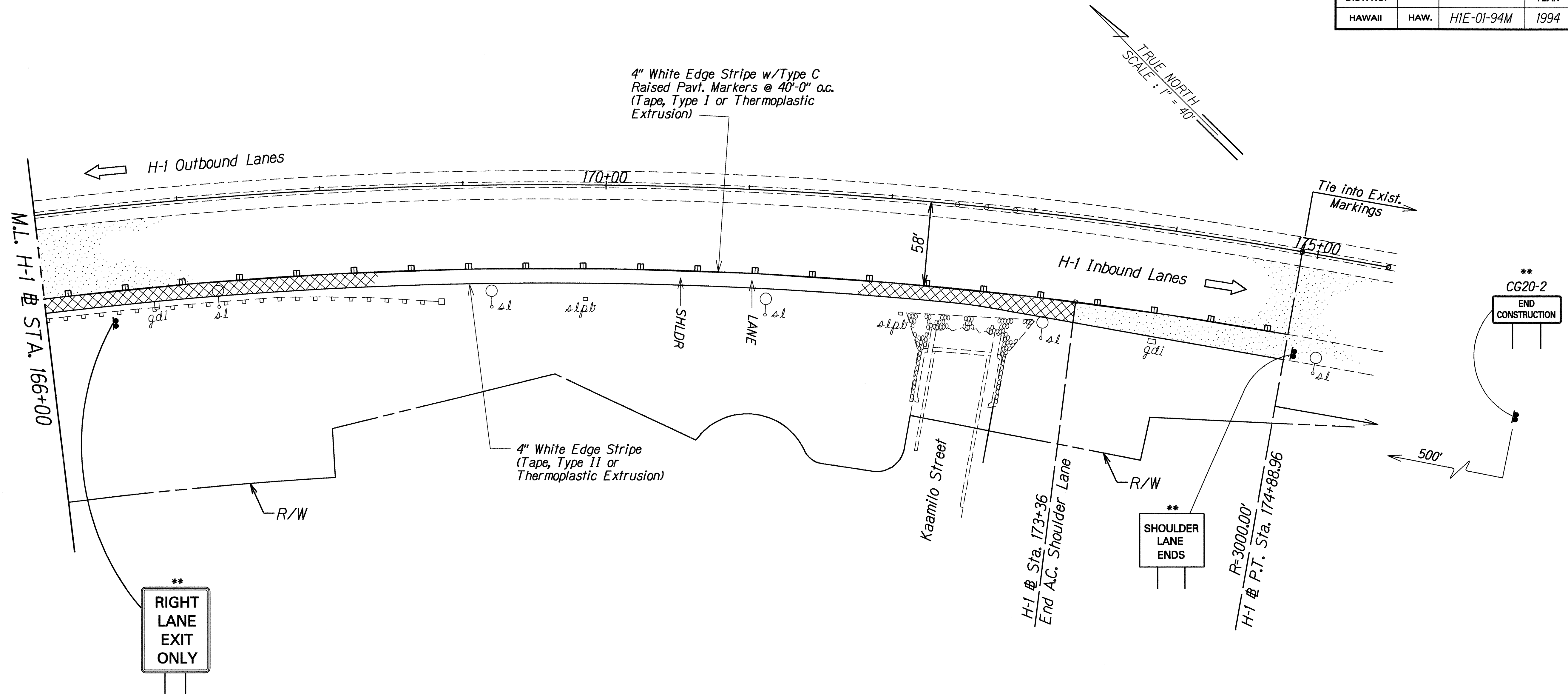
SHEET No. 19 OF 14 SHEETS

FED. ROAD DIST. NO.	STATE	PROJ. NO.	FISCAL YEAR	SHEET NO.	TOTAL SHEETS
HAWAII	HAW.	H1E-01-94M	1994	24	27



ORIGINAL PLAN	DATE
SURVEY PLATTED BY	3/94
DRAWN BY Elaine Isobe	
DESIGNED BY George Talska	
CHECKED BY John Talska	
IN CHARGE BY George Talska	

FED. ROAD DIST. NO.	STATE	PROJ. NO.	FISCAL YEAR	SHEET NO.	TOTAL SHEETS
HAWAII	HAW.	H1E-01-94M	1994	25	27



KEY:

- * Remove Exist. Sign(s) & Post(s)
- ** Remove Exist. & Install New Sign(s) and Post(s)
- *** Remove Exist. & Install New Sign(s) on Exist. Highway Lighting Standard or Traffic Signal Standard
- **** Install New Sign(s) w/Post(s)
- ***** Install New Sign(s) on Exist. Highway Lighting Standard or Traffic Signal Standard
- * Exist. Sign(s) to Remain

ORIGINAL PLAN	SURVEY PLOTTED BY	DATE
NOTE BOOK	DRAWN BY	3/94
TABLET	DESIGNED BY	
QUANTITIES BY	CHECKED BY	

STATE OF HAWAII
DEPARTMENT OF TRANSPORTATION
HIGHWAYS DIVISION

PAVEMENT MARKING & STRIPING PLAN

RTE. H-1 INBOUND SHLDR. LANE RESURF.

Waiawa Interchange On-Ramp to Moanalua Off-Ramp

Project No. H1E-01-94M

Scale: 1"=40' Date: Mar., 1994

SHEET No. 25 OF 27 SHEETS