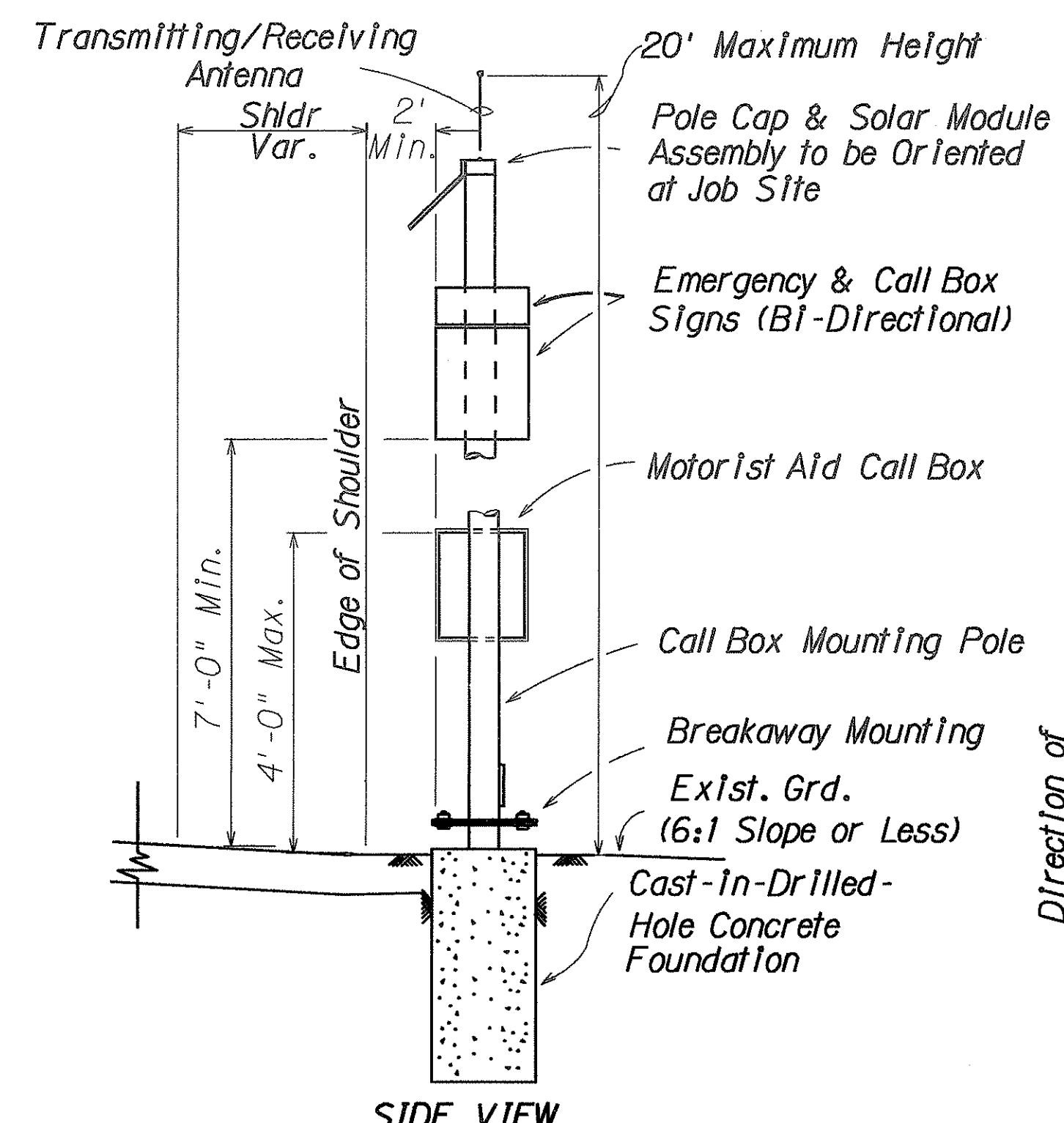
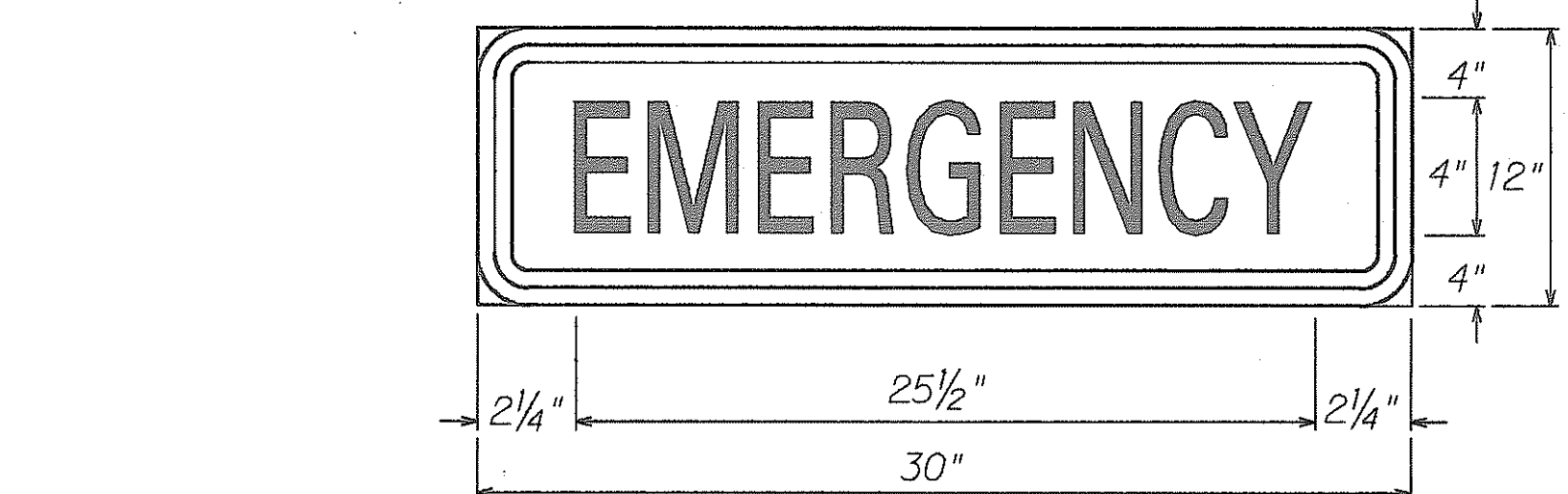


FED. ROAD DIST. NO.	STATE	PROJ. NO.	FISCAL YEAR	SHEET NO.	TOTAL SHEETS
HAWAII	HAW.	19B-01-92	1992	5	5
HIB-G-01-92					

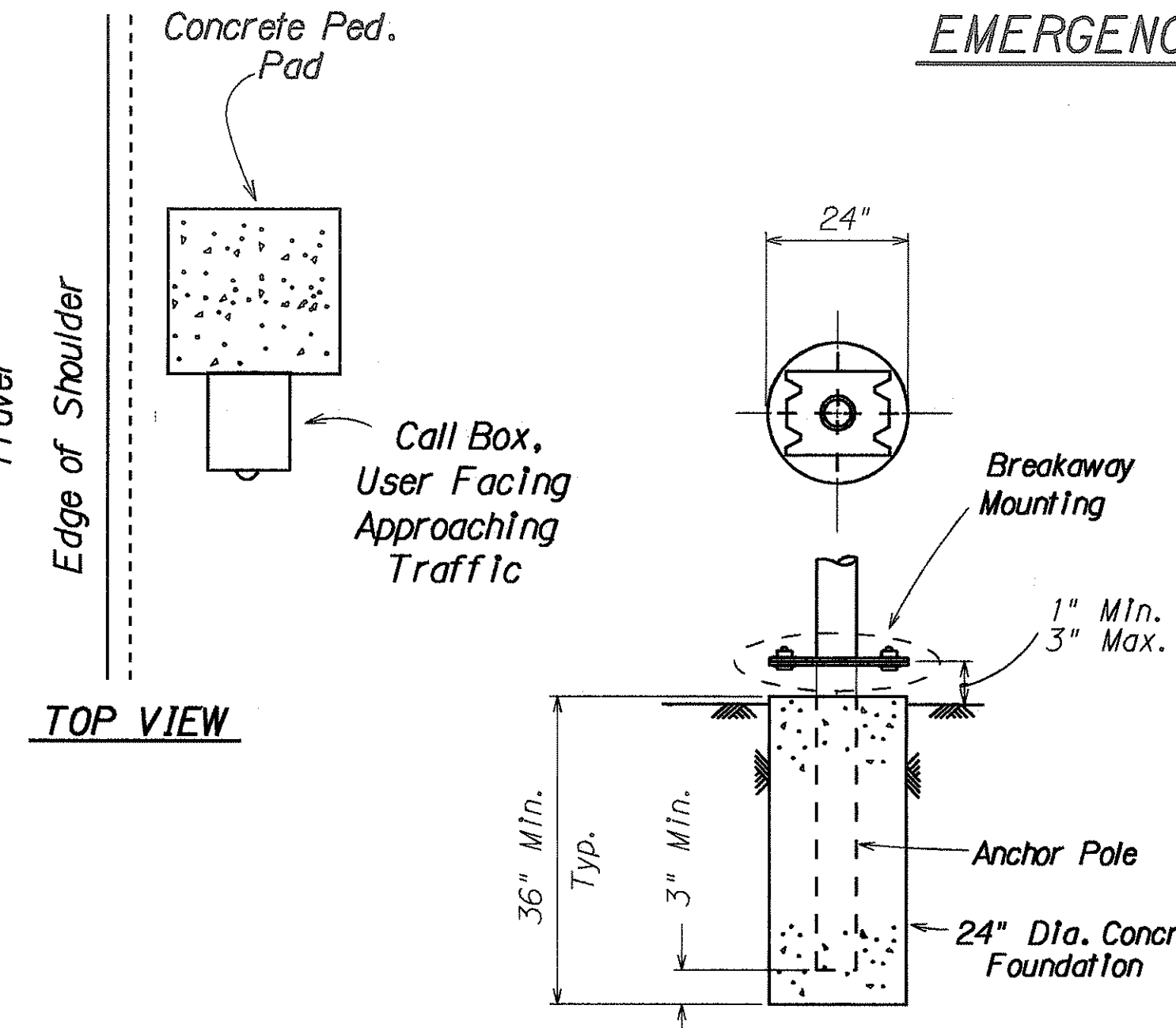


TYPICAL INSTALLATION



EMERGENCY SIGN

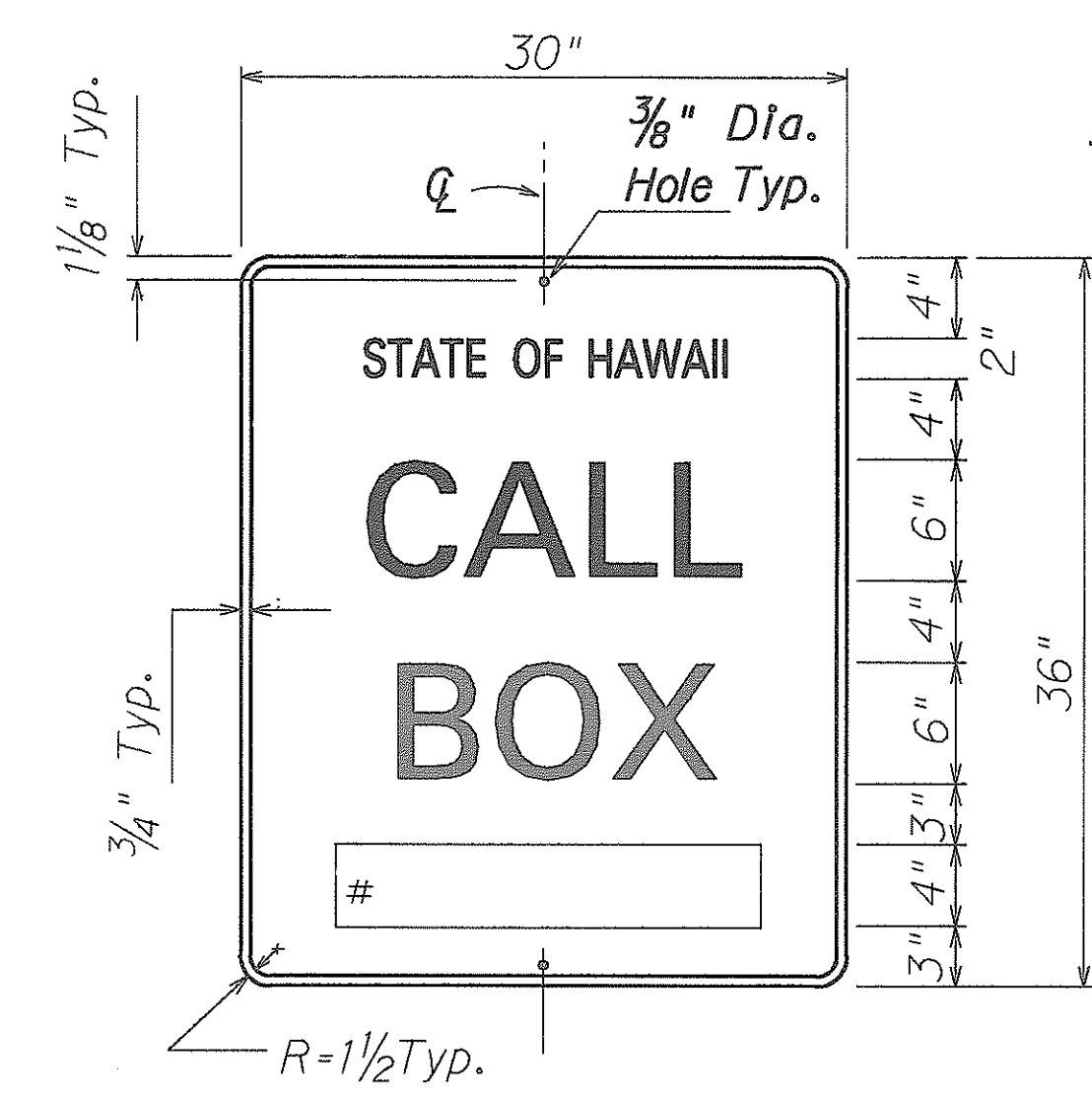
- NOTES:**
1. Lettering shall be centered and shall be 4" SERIES C letters.
 2. All signs shall have white reflectorized border and legend on a blue reflectorized background.



CIDH FOUNDATION WITH BREAKAWAY MOUNTING

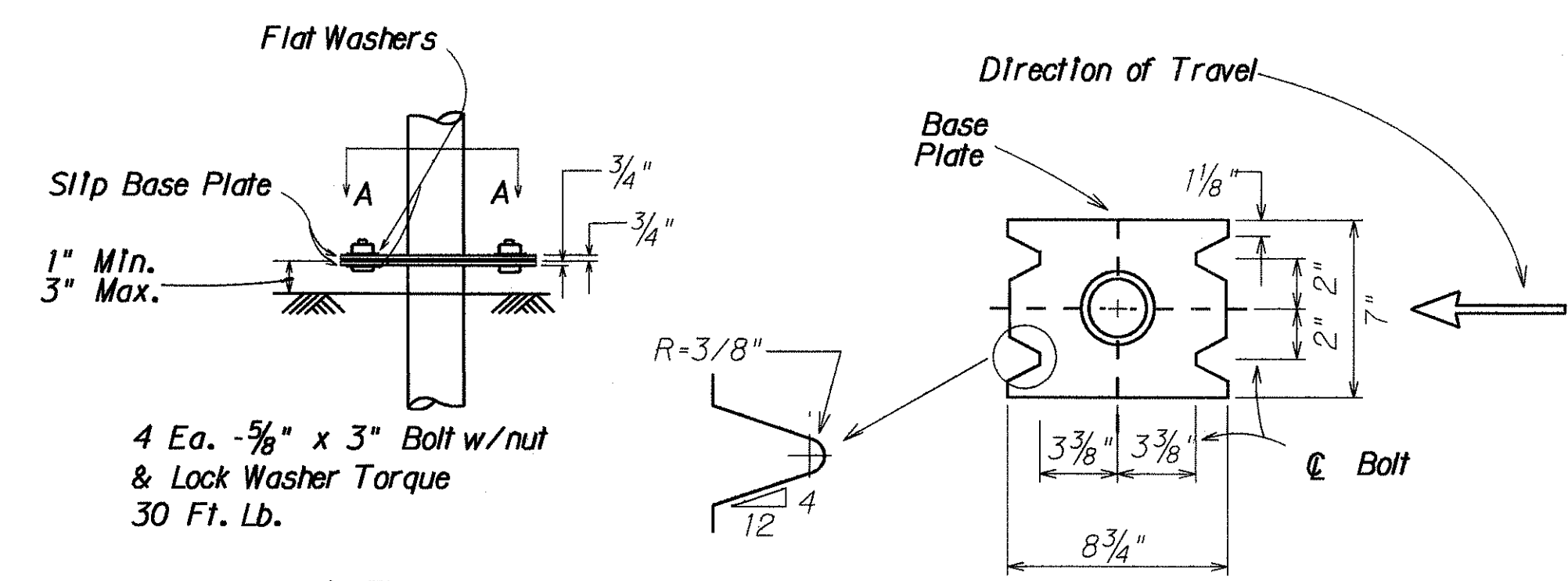
- NOTES:**
1. Foundation shall be Class B placed against undisturbed material.
 3. Backfill shall be complete and adjacent surface improvements prepared prior to erection of the post.
 4. 1/2" expansion joint material shall be placed between the foundation and abutting concrete paving.
 5. CIDH = CAST IN DRILLED HOLE

CONCRETE FOUNDATION



CALL BOX IDENTIFICATION SIGN

- NOTES:**
1. All lines of lettering shall be centered and shall be the following lettering size and series:
Line No. 1 - 2" SERIES C
Line No. 2 - 6" SERIES E
Line No. 3 - 6" SERIES E
 2. Call Box Identification Numbers shall be 4" SERIES D letters centered in the bottom position of the sign.
 3. All signs shall have white reflectorized border and legend on a blue reflectorized background.
 4. Modify hole locations to accommodate the 2" offset from edge of shoulder.



NOTE
All Contact washer areas shall be free of galvanizing runs & beads & rubbed with parafin

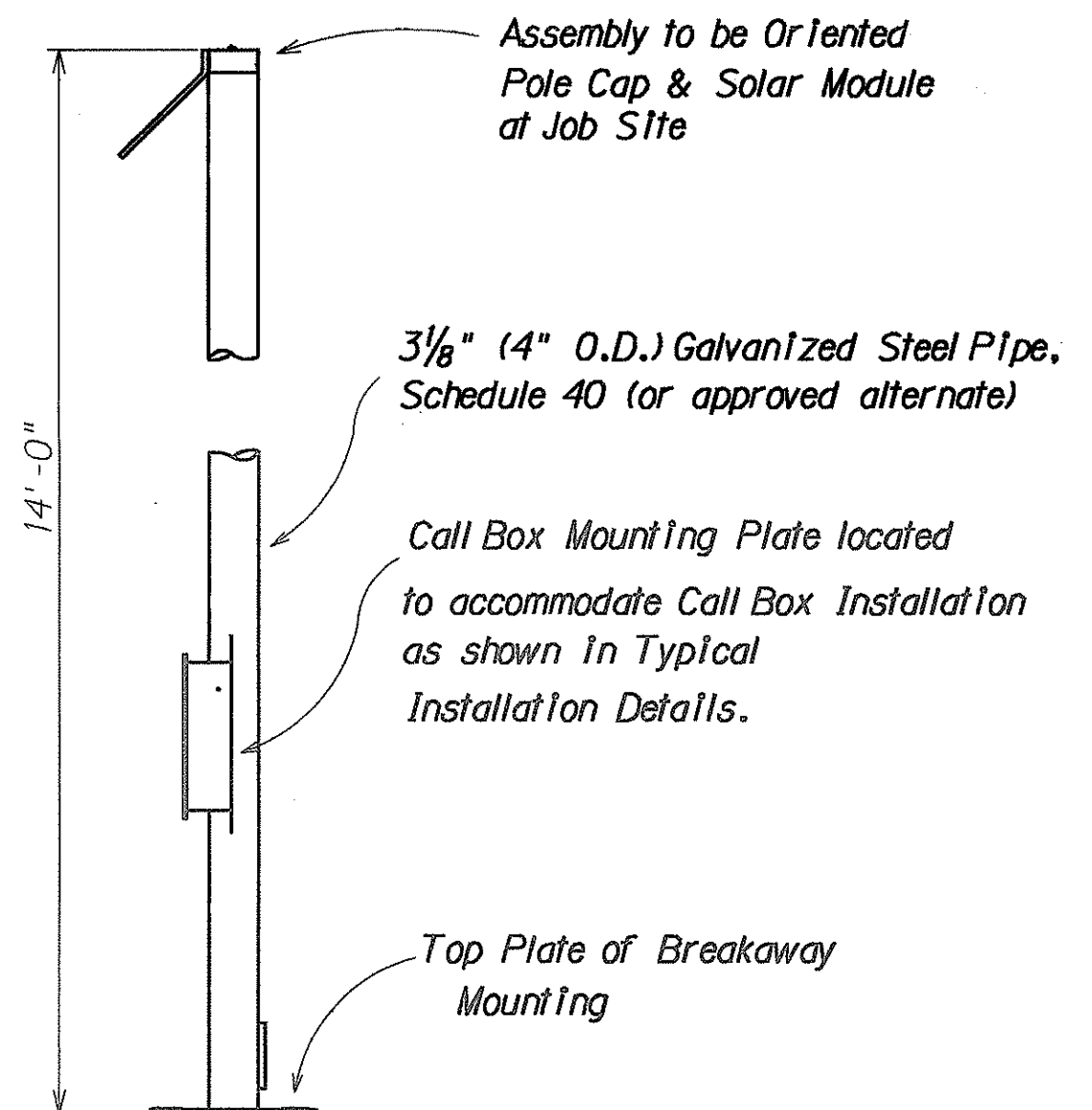
TOP 4" BOTTOM PLATE SECTION A-A

BREAKAWAY MOUNTING

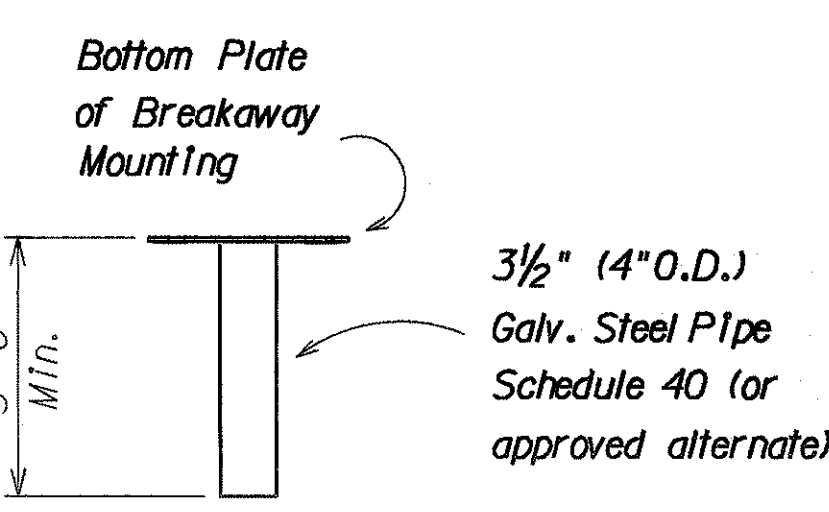
GENERAL NOTES

1. Scope of work for this project involves installation of emergency telephones on mounting poles along Interstate Route H1, on Oahu and Queen Kaahumanu Highway on Hawaii.
2. The exact locations of Emergency Call Box units shall be determined in the field by the Engineer.
3. Existing structures and utilities damaged by the Contractor shall be repaired by the Contractor at his expense.

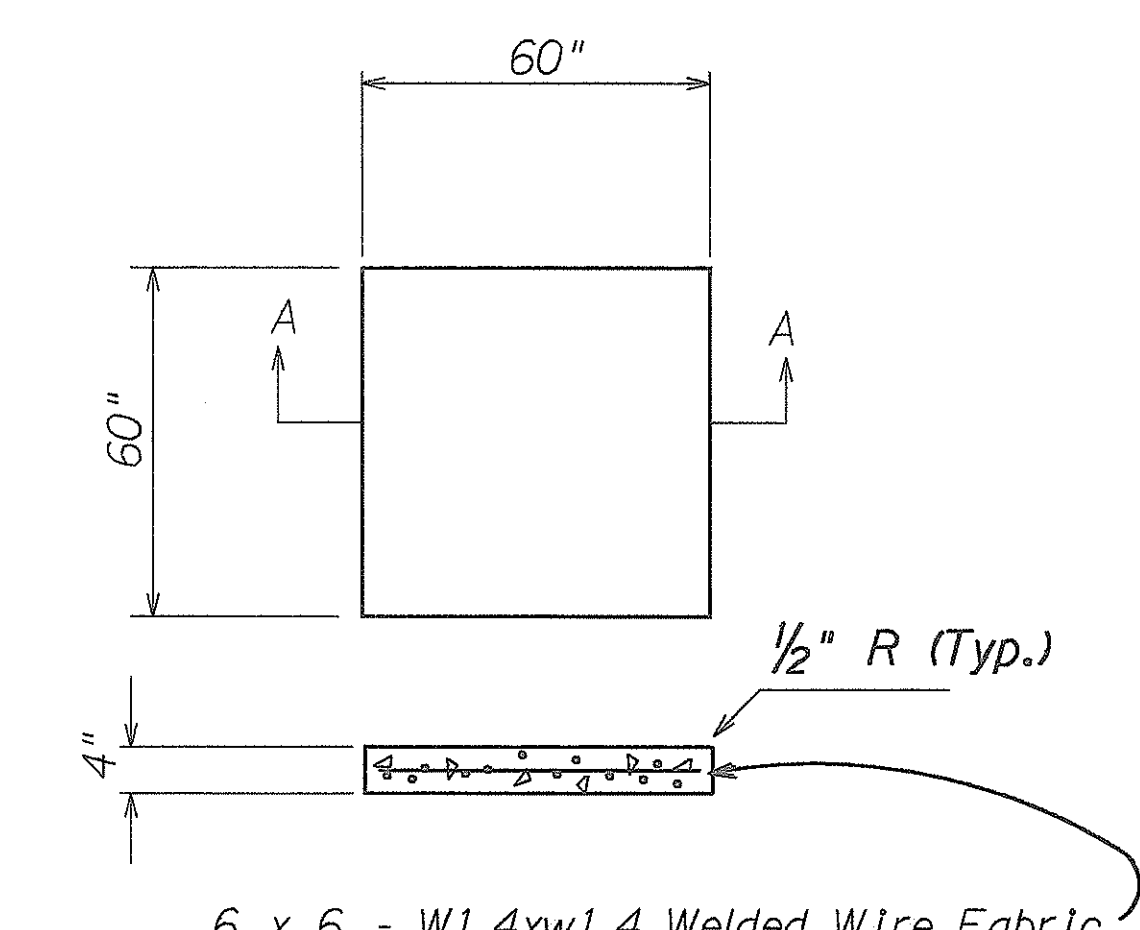
SURVEY PLOTTED BY	DATE
DESIGNED BY	
NOTED BY	
CHECKED BY	
NO.	



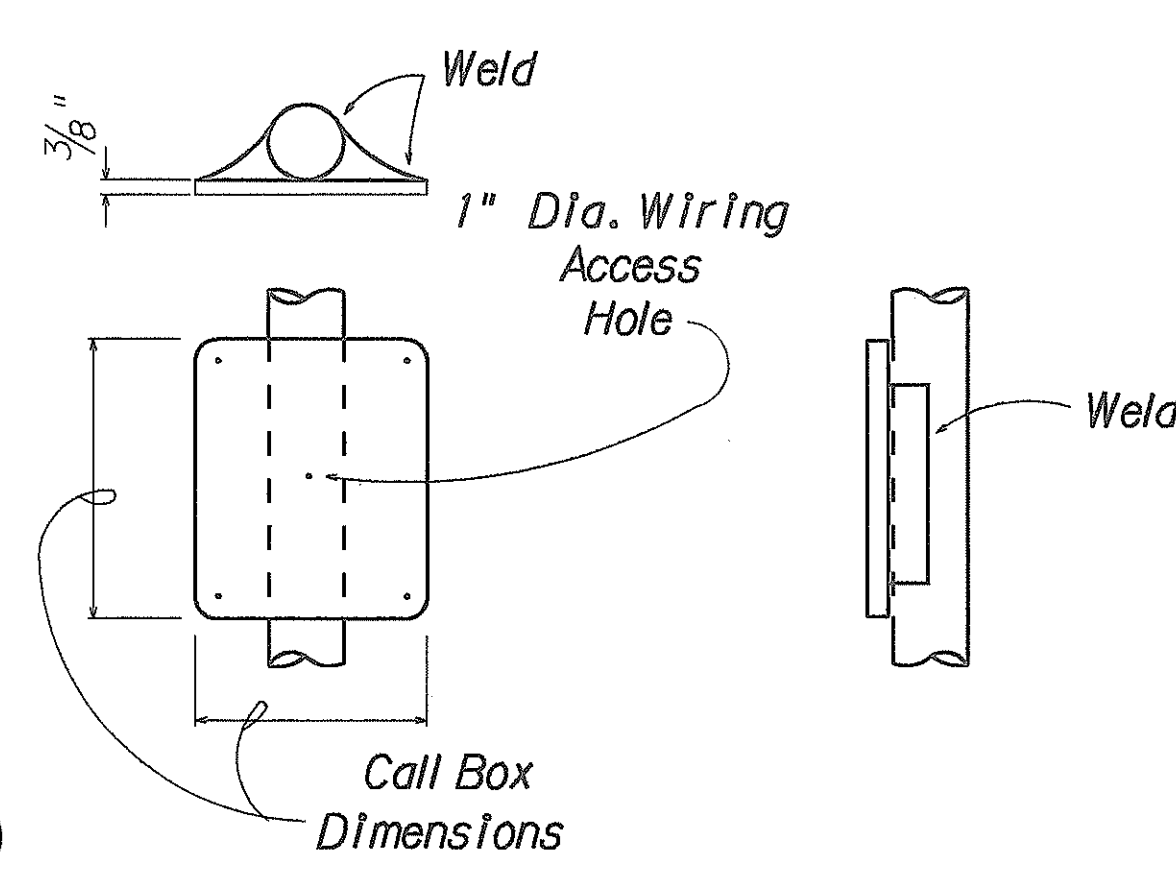
CALL BOX MOUNTING POLE



DETAIL: ANCHOR POLE



CONCRETE PEDESTRIAN PAD



CALL BOX MOUNTING DETAILS

STATE OF HAWAII
DEPARTMENT OF TRANSPORTATION
HIGHWAYS DIVISION

GENERAL NOTES & DETAILS

EMERGENCY TELEPHONES
QUEEN KAAHUMANU HIGHWAY
PROJ No. 19B-01-92
INTERSTATE ROUTE H1
PROJ No. HIB-G-01-92

Scale: Not to Scale Date: April 11, 1991

SHEET No. 1 OF 1 SHEETS