

FED. ROAD DIST. NO.	STATE	FED. AID PROJ. NO.	FISCAL YEAR	SHEET NO.	TOTAL SHEETS
HAWAII	HAW.	IR-HI-1(210).17	1990	II	65

LEGEND

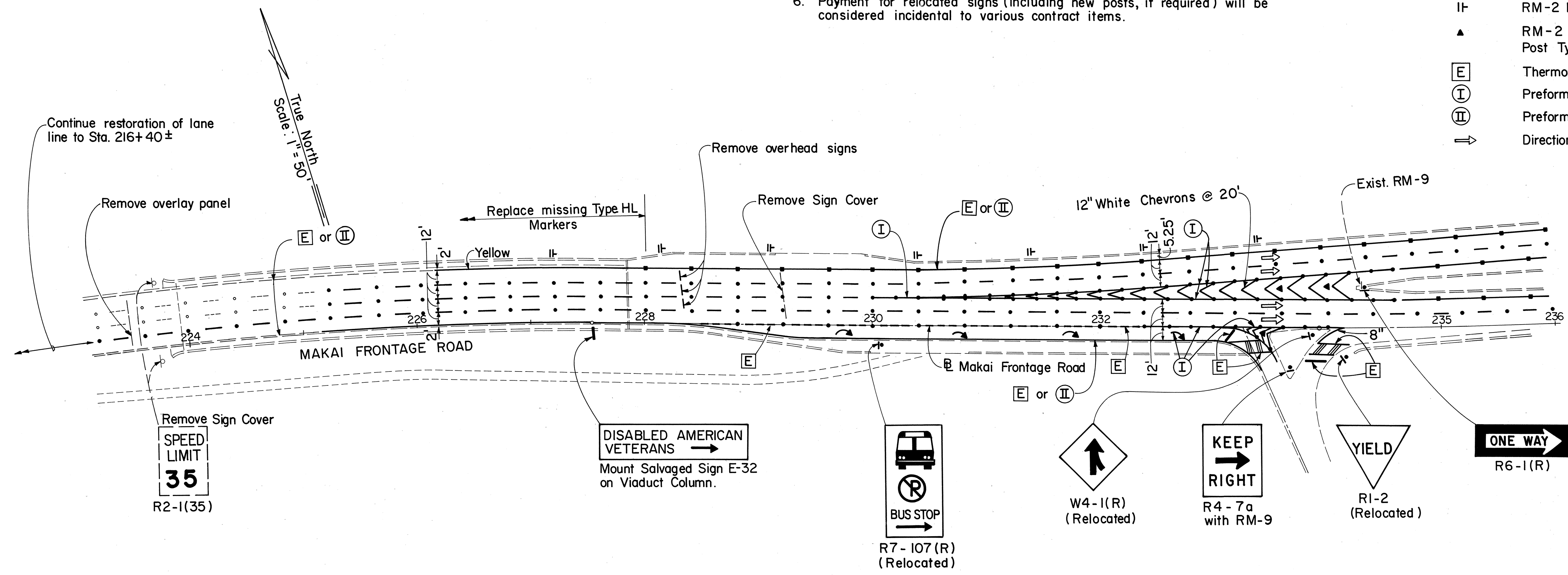
- 4" White Stripes, 2'-0" long, with Type CL Markers at 40'
- 4" White Intersection Guideline, 2'-0" long at 4'
- 4" White Stripe (unless shown otherwise)
- 4" Yellow Stripe with Type HL Markers at 40'
- 8" White Stripe with Type CL Markers at 20'
- 8" Yellow Stripe with Type HL Markers at 20'
- 4 Type A Markers and Type CL Markers at 40'
- New or Relocated Sign
- Existing Sign
- Pavement Arrows
- Traffic Delineator (Tube)
- Type II Barricade
- Type III Barricade
- Portable Concrete Guardrail
- RM-2 Reflector Markers mounted on railing
- RM-2 Reflector Markers with Flexible Delineator Post Type A
- Thermoplastic Extrusion Stripe
- Preformed Pavement Marking Tape, Type I
- Preformed Pavement Marking Tape, Type II
- Direction of Traffic

PAVEMENT MARKING NOTE

- Location of pavement markers is shown schematically. For exact location of markers in relation to stripe see Standard Plans TE-30, TE-31 & TE-32.

GENERAL SIGNING NOTES

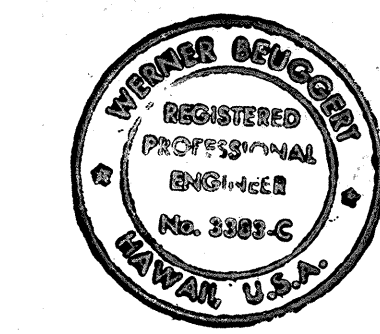
- Signs, Traffic Delineators, and Barricade Warning Lights shall conform to FHWA Publications, "Manual on Uniform Traffic Control Devices", 1978 and "Standard Highway Signs", 1979 and as amended.
- Unless noted otherwise, exact locations of Signs and Delineators will be determined by the Engineer.
- Post of new or relocated signs mounted on structure shall be as shown on Standard Plan TE-03, except that length of Sign Post Anchor shall be 8 inches.
- Contractor is responsible for maintaining new and existing Signs, Barricades and Delineators in good condition during Life of Project.
- Superfluous Signs, Barricades, Overlay Panels & Portable Concrete Guard Rails and Delineators shall be removed & stored on site as directed by the Engineer. Payment shall be considered incidental to various contract items.
- Payment for relocated signs (including new posts, if required) will be considered incidental to various contract items.



TRAFFIC PATTERN (C)

Scale: 1" = 50'

ORIGINAL PLAN	DATE
SURVEY PLOTTED BY	
TRACED BY	
DESIGNED BY	
QUANTITIES BY	
CHECKED BY	
No.	

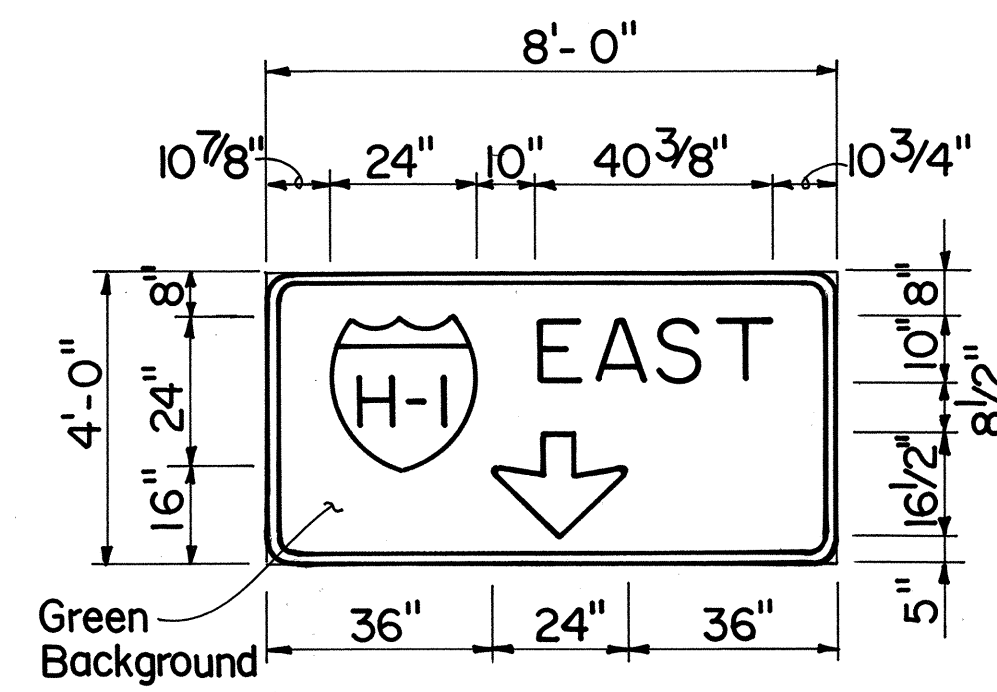


STATE OF HAWAII
DEPARTMENT OF TRANSPORTATION
HIGHWAYS DIVISION

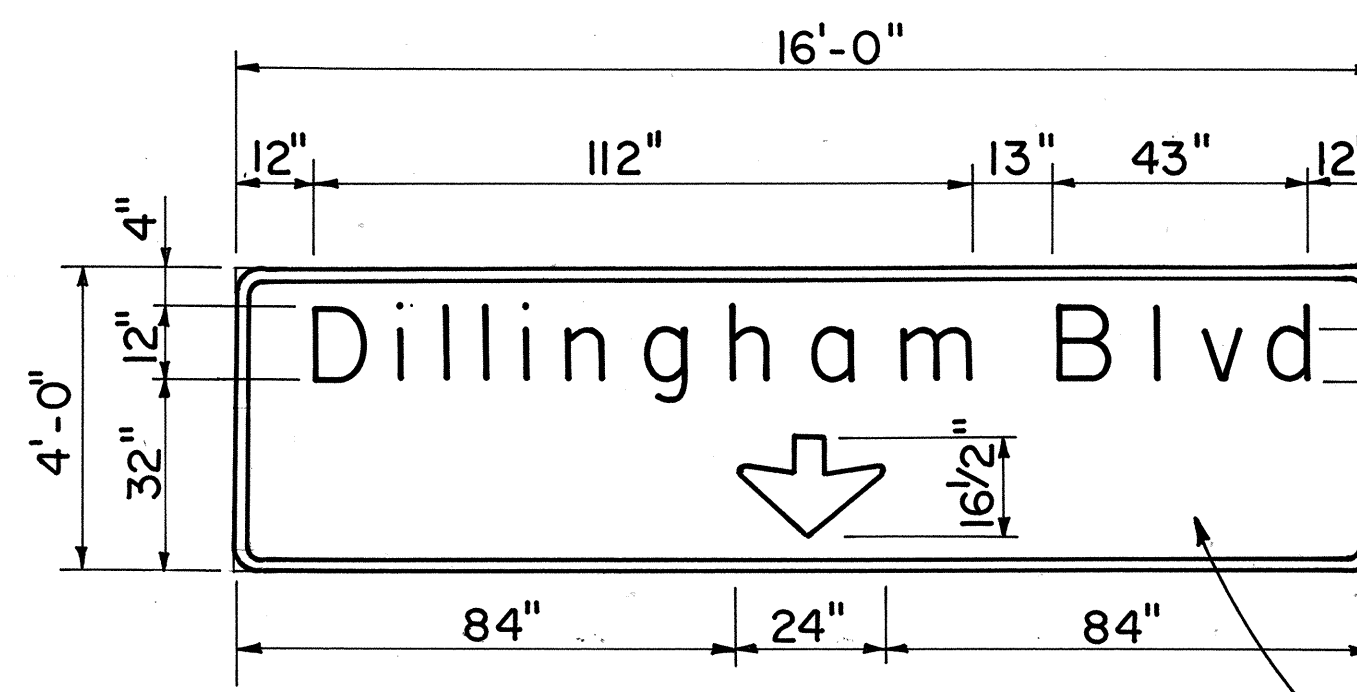
TRAFFIC PATTERN (C)
(CONSTR. PHASE III)
KEEHI INTERCHANGE
Trestle Structure at Makai Front. Rd.
FAIP NO. IR - HI - 1(210).17

SCALE: 1" = 50' DATE: MAY 1, 1988
SHEET No. C-9 OF 13 SHEETS

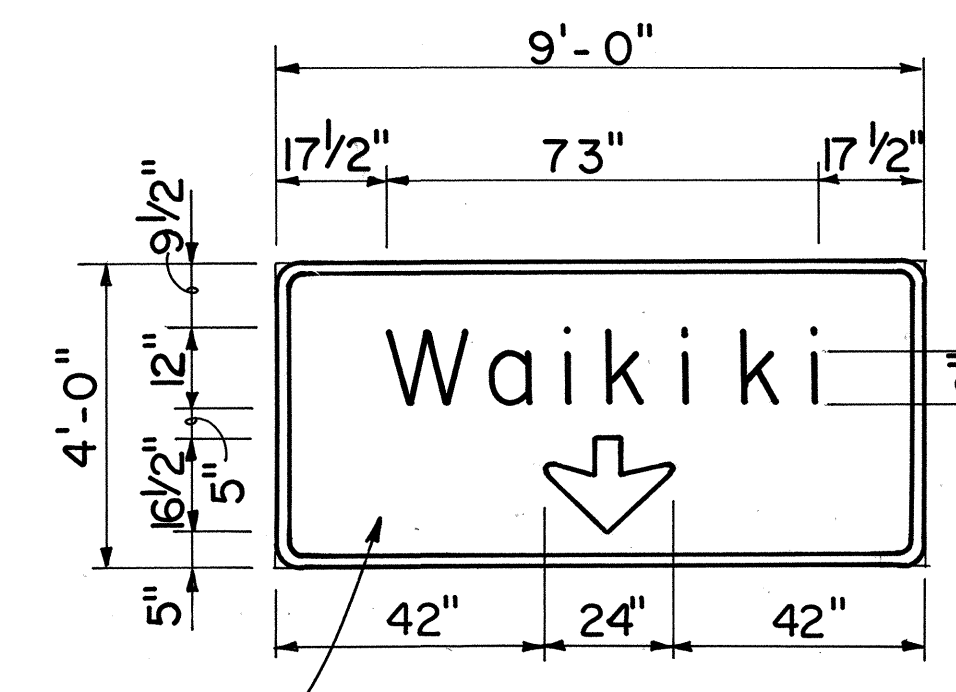
FED. ROAD DIST. NO.	STATE	FED. AID PROJ. NO.	FISCAL YEAR	SHEET NO.	TOTAL SHEETS
HAWAII	HAW.	IR-HI-(210):17	1990	12	65



SIGN DIR-3
Scale: 3/8" = 1'-0"



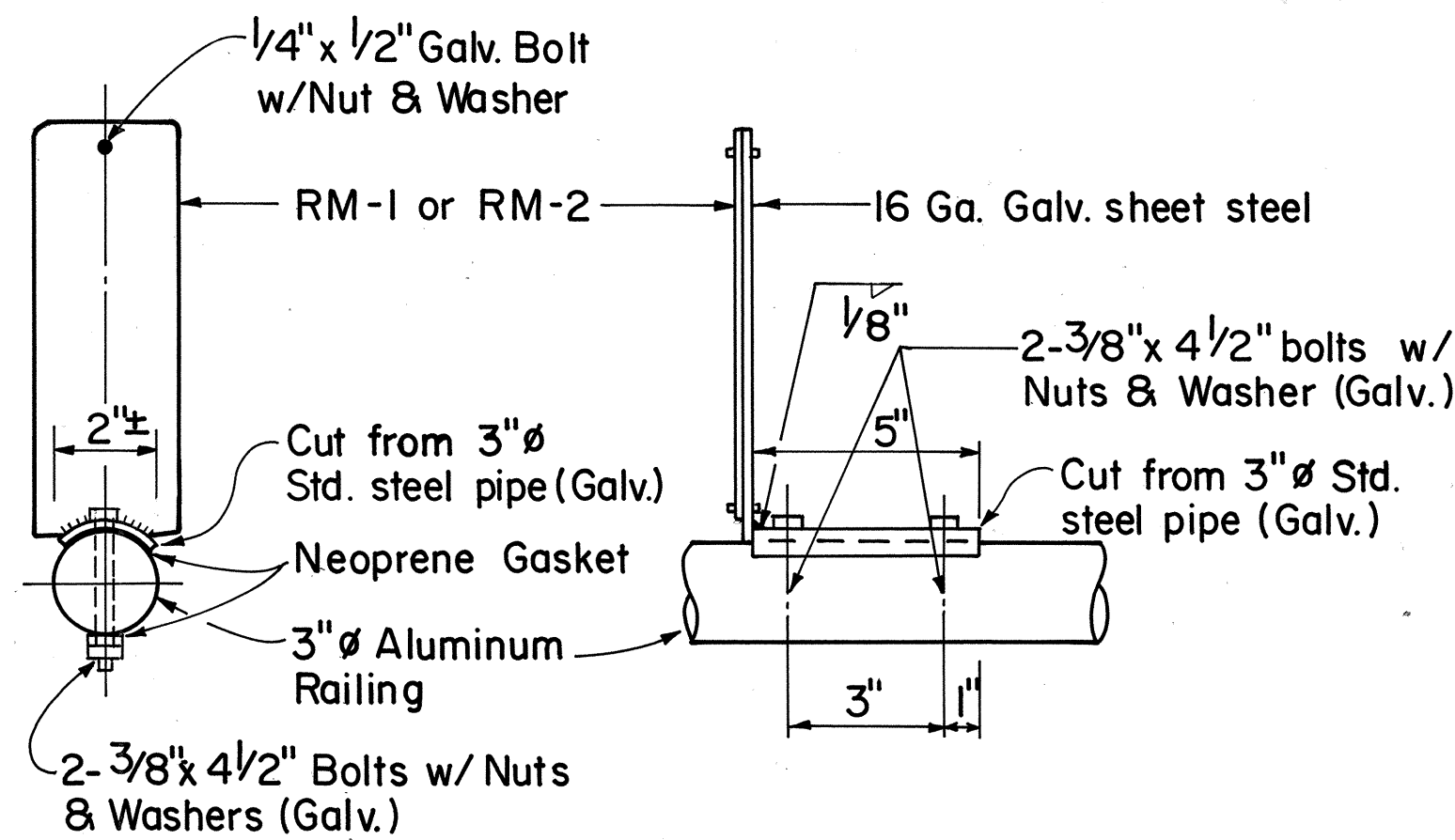
SIGN DIR-4
Scale: 3/8" = 1'-0"



SIGN DIR-5
Scale: 3/8" = 1'-0"

SIGN PANEL NOTES:

1. Alphabetical Characters shall be uppercase or lowercase, as shown, and shall have Series E dimensions & spacings in accordance with the FHWA Publication "Standard Alphabets for Highway Signs", Bureau of Public Roads, 1966.
2. Overlay Panel shall be of 0.08-inch thick sheet aluminum & shall be of same reflectorization as sign panel. Payment will be made under "Panel for Directional Sign."
3. Backing for Signs DIR-3 through DIR-8 may be 3/4" thick, waterproof Fir plywood in lieu of sheet aluminum.
4. Payment for support, mounting and removal of DIR-Signs and DIR-Overlay Panel is considered incidental to "Panel for Directional Sign."

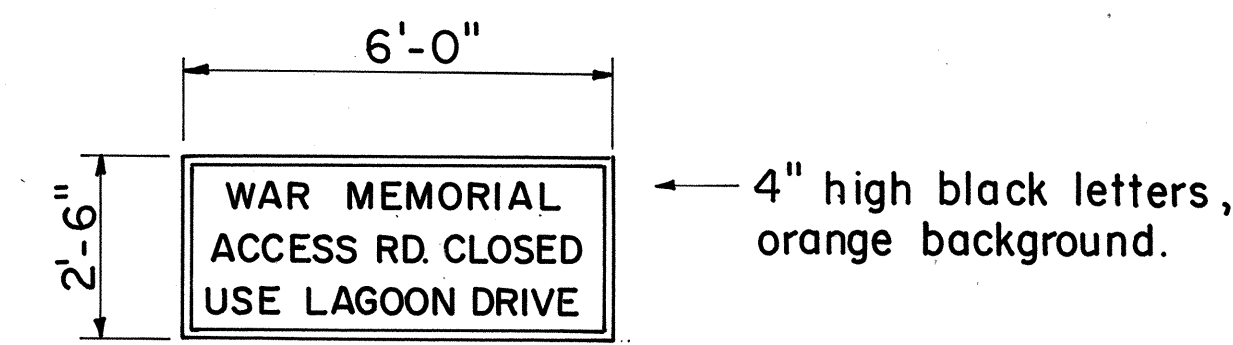


NOTE: Contractor has the option to install 3/4" wide, 18 gage stainless steel bands with 1/16" thick stainless steel clamp in lieu of 3/8" x 4 1/2" bolts.

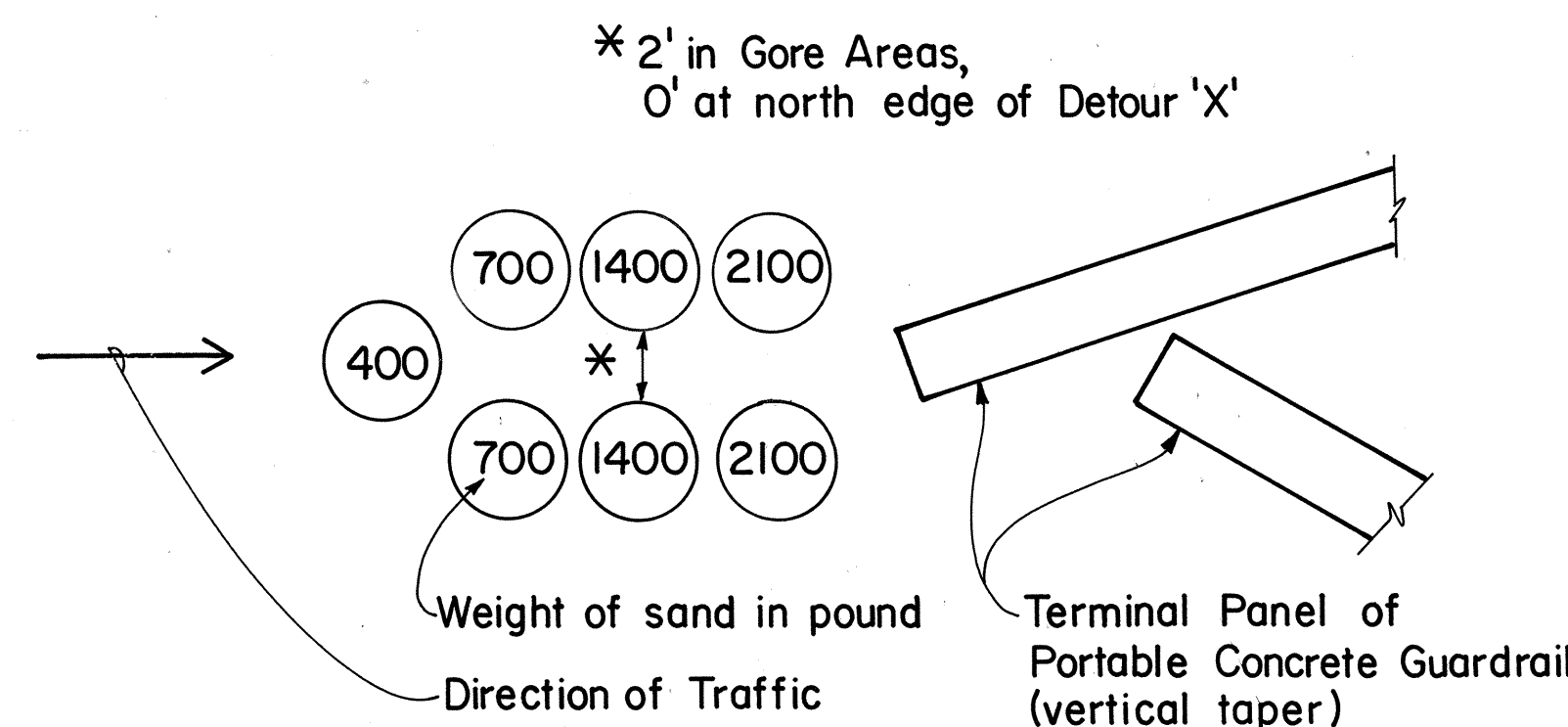
BACK ELEVATION SIDE ELEVATION

RAILING MOUNTED REFLECTOR MARKER

N.T.S.

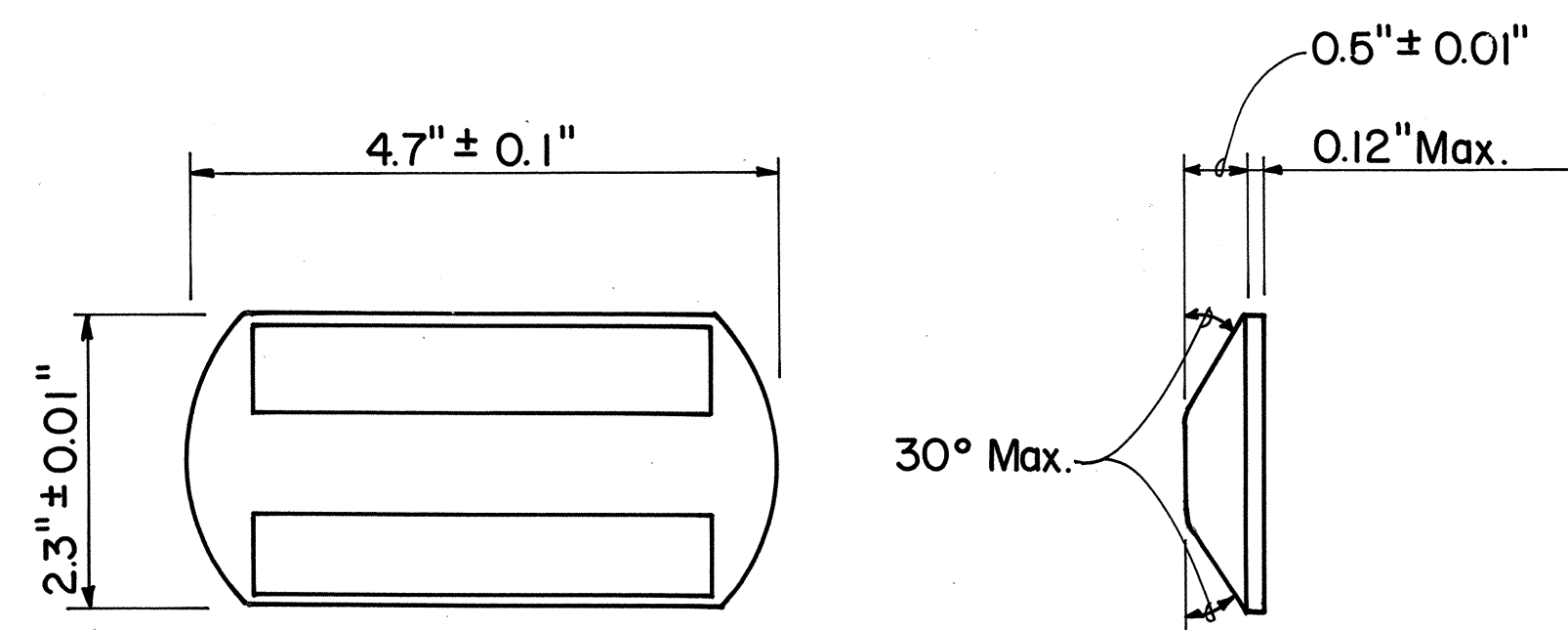


SIGNS DIR-6, DIR-7 & DIR-8
Scale: 3/8" = 1'-0"



INERTIAL BARRIER SYSTEM

(7 BARRELS)
N.T.S.

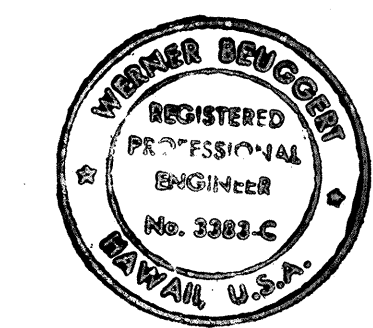


TYPE CL, DL & HL PAVEMENT MARKERS

N.T.S.

TYPE	REFLECTORS
CL	Red - Clear
DL	Two - Way Yellow
HL	One - Way Yellow

SURVEY PLOTTED BY	DATE
DRAWN BY	
DESIGNED BY	
QUANTITIES BY	
CHECKED BY	
ORIGINAL PLAN	
NOTE BOOK	
No.	



THIS WORK WAS PREPARED BY ME
OR UNDER MY SUPERVISION
Wesley

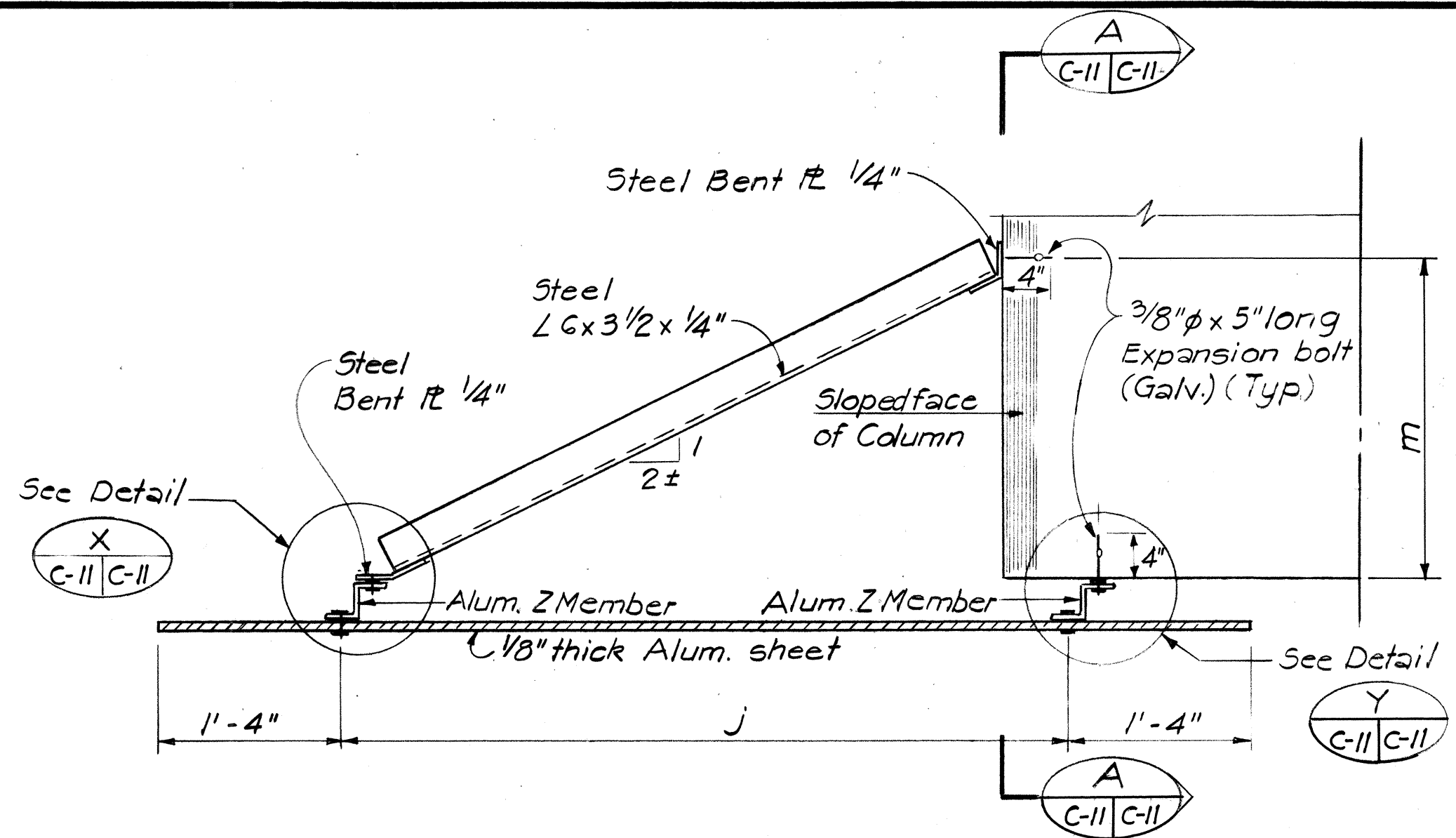
STATE OF HAWAII
DEPARTMENT OF TRANSPORTATION
HIGHWAYS DIVISION

SIGN PANEL & MISCELLANEOUS DETAILS

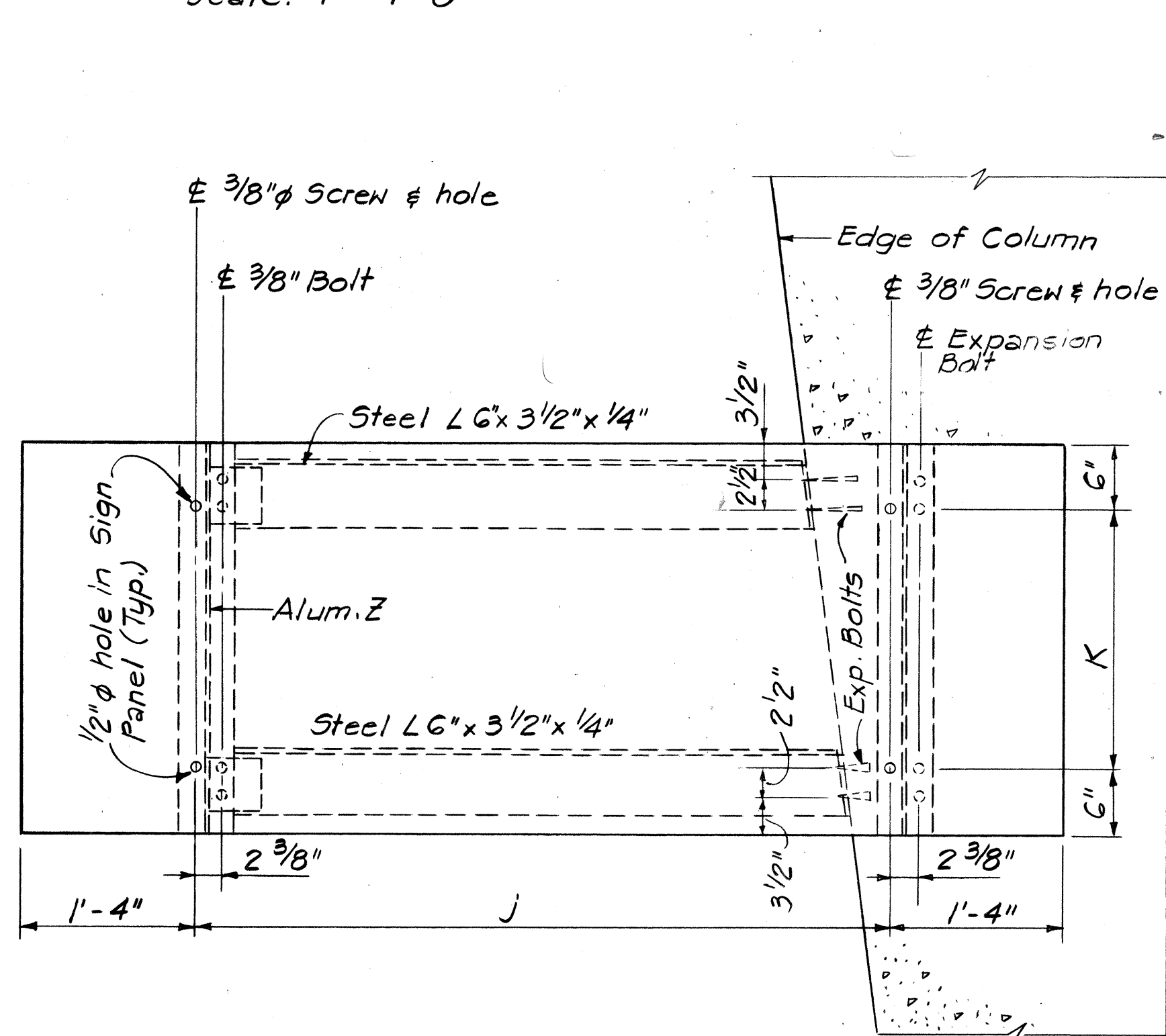
KEEHI INTERCHANGE
Trestle Structure at Makai Front Rd.
FAIP NO. IR - HI - 1(210):17

SCALE: AS SHOWN DATE: MAY 1, 1988
SHEET No. C-100F 13 SHEETS

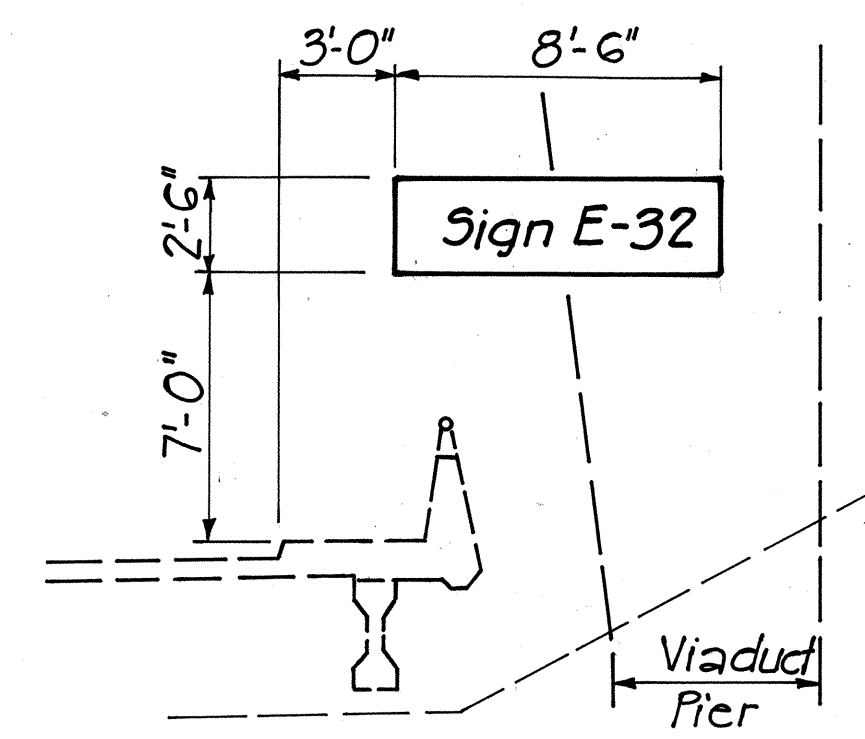
FED. ROAD DIST. NO.	STATE	FED. AID PROJ. NO.	FISCAL YEAR	SHEET NO.	TOTAL SHEETS
HAWAII	HAW.	IR-HI(210)17	1990	13	65



PLAN FOR SIGN E 32
Scale: 1" = 1'-0"

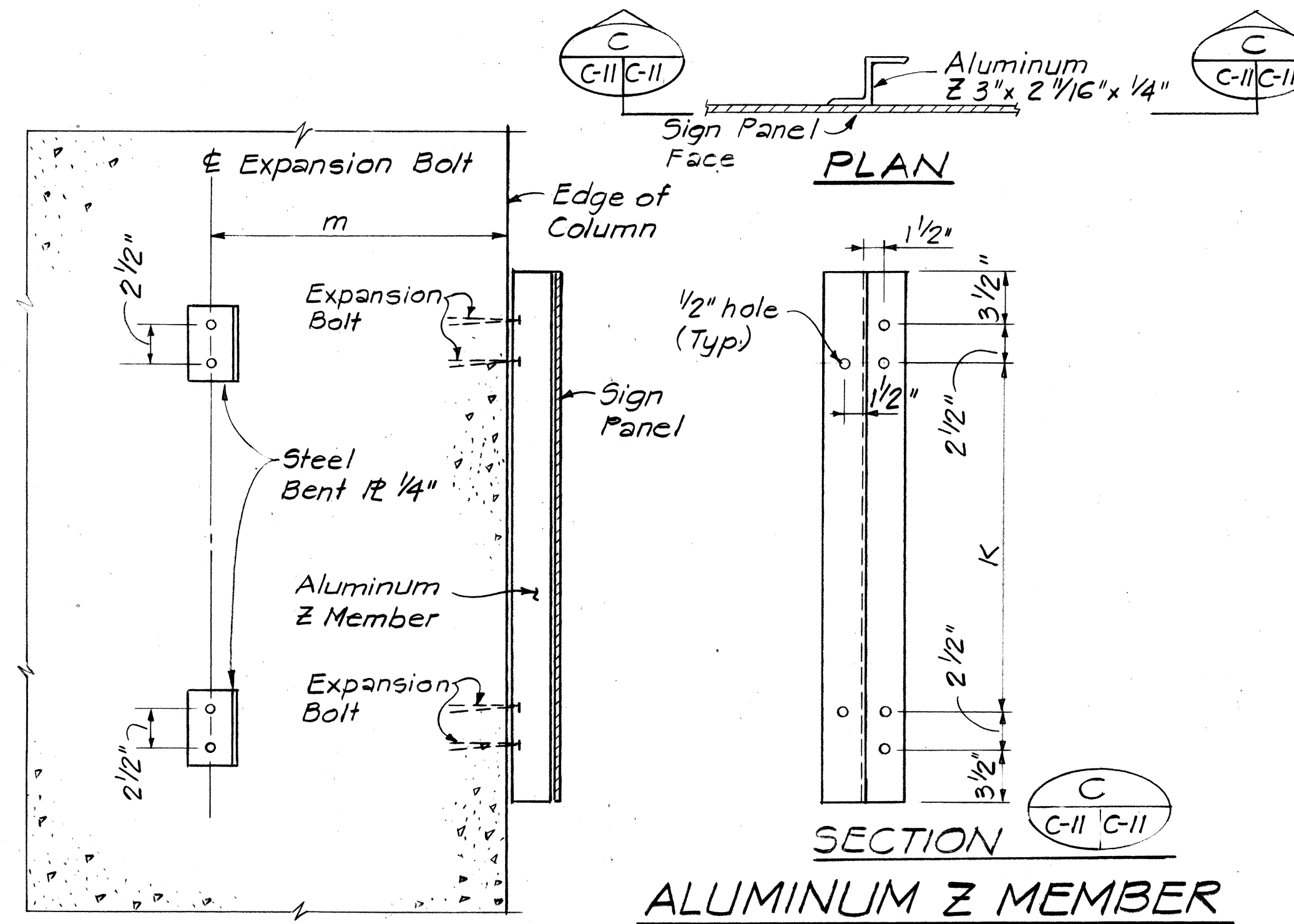


ELEVATION
Scale: 1" = 1'-0"

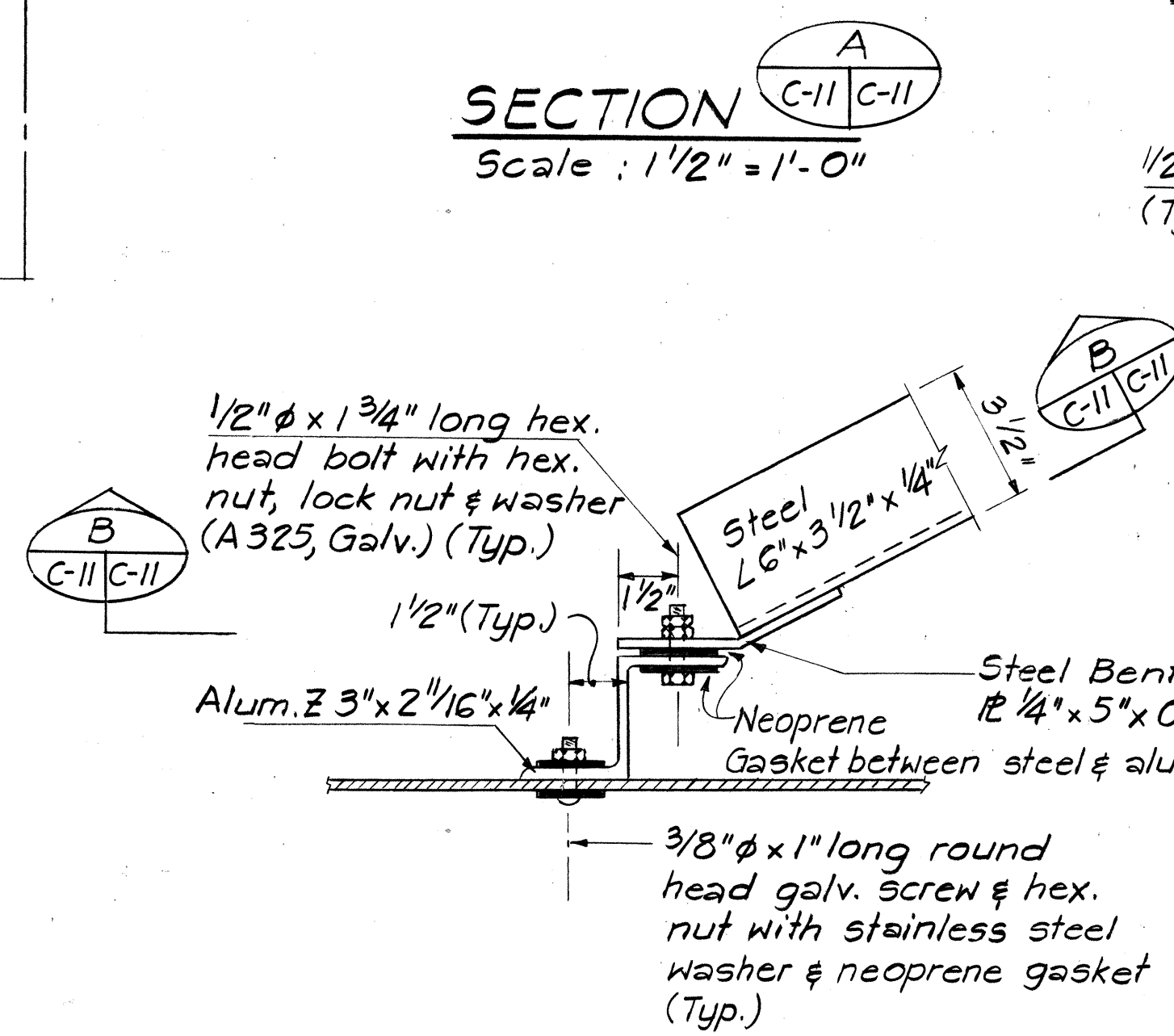


SIGN MOUNTING LOCATION
Scale: 1" = 5'

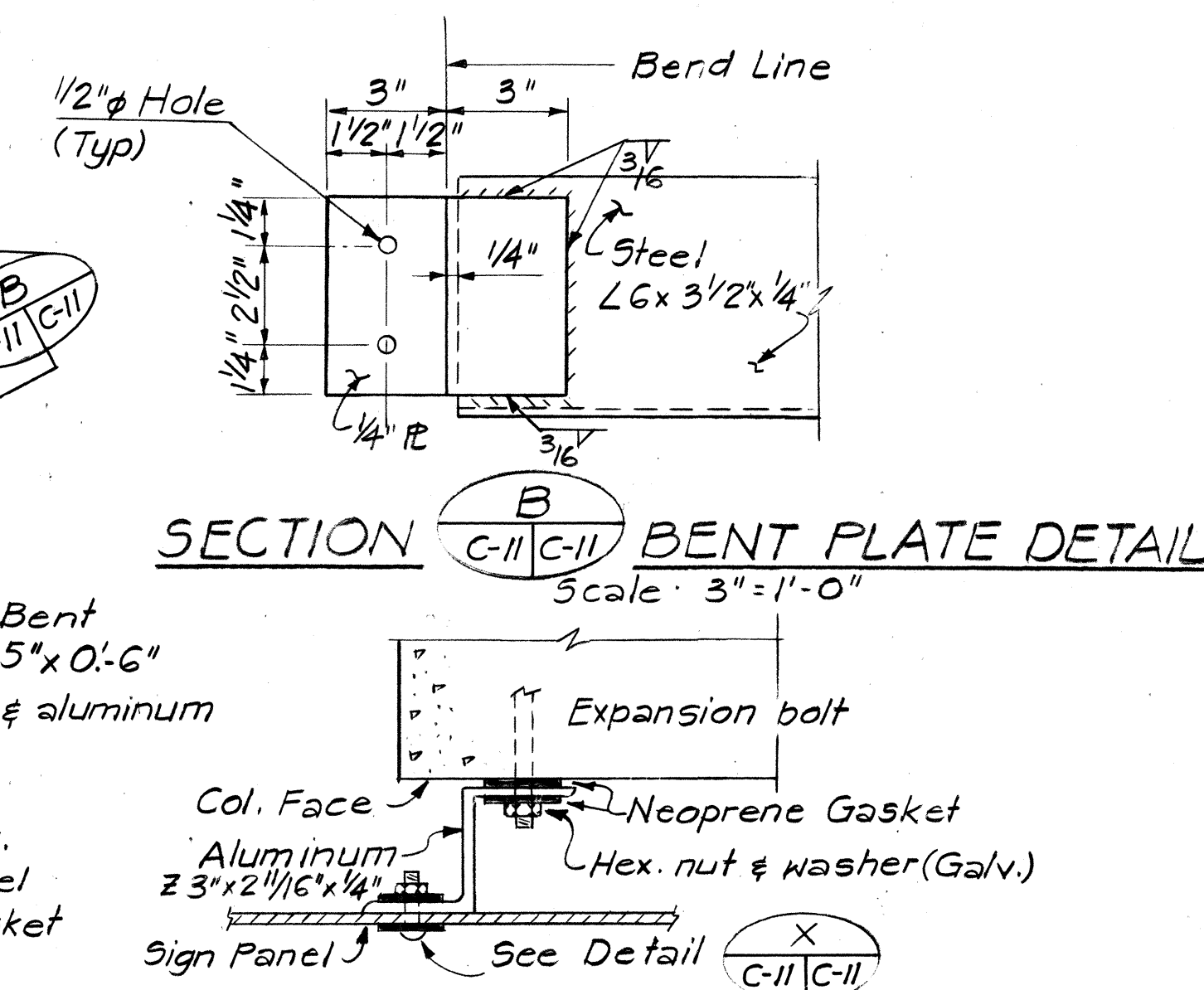
SIGN NO.	PANEL SIZE	j	k	m
E-32	2.5'x8.5'	5'-10"	1'-6"	2'-0"±



SECTION ALUMINUM Z MEMBER
Scale: 1/2" = 1'-0"



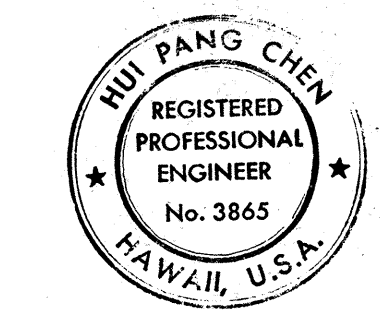
DETAIL X
Scale: 3" = 1'-0"



DETAIL Y
Scale: 3" = 1'-0"

- NOTES:**
- Design Specifications: AASHTO Standard Specifications for Structural Supports for Highway Signs, Luminaires & Traffic Signals, dated 1985, plus interim Specifications.
 - Design Wind Velocity = 80mph
 - All Structural Steel shall be ASTM A36 and shall be hot dipped galvanized.
 - All aluminum members & aluminum sheet shall be 6061-T6 Aluminum Alloy.
 - Aluminum members and surfaces in contact with Structural Steel shall be isolated with neoprene material.
 - Expansion bolts shall have an ultimate pullout strength = 4100 lbs. and ultimate shear = 5000 lbs.
 - Salvaged sign panel shall be attached to new 1/8" thick Aluminum sheet. (Payment considered incidental to sign support.)
 - Steel parts shall be painted gray.
 - Holes for expansion bolts shall not damage existing reinforcement of viaduct pier. All unused holes shall be plugged with epoxy concrete.

SURVEY PLOTTED BY: _____
 DATE: _____
 DRAWN BY: _____
 TRACED BY: _____
 NOTE BOOK: _____
 QUANTITIES BY: _____
 CHECKED BY: _____
 NO. _____



THIS WORK WAS PREPARED BY ME OR UNDER MY SUPERVISION.
Hui Pang Chen

STATE OF HAWAII
DEPARTMENT OF TRANSPORTATION
HIGHWAYS DIVISION
SUPPORT FOR PIER MOUNTED SIGN
(SIGN E-32)
KEEHI INTERCHANGE
Trestle Structure at Makai Front Rd.
FAIP NO. IR - HI - 1(210) : 17
SCALE: AS SHOWN DATE: MAY 1, 1988
SHEET NO. C-II OF 13 SHEETS