

FED. ROAD DIST. NO.	STATE	FED. AID PROJ. NO.	FISCAL YEAR	SHEET NO.	TOTAL SHEETS
HAWAII	HAW.	IR-HI-(210):17	1990	4	65

#### HIGHWAY LIGHTING NOTES :

1. Install raceways and pullboxes such that there is no conflict with work of subsequent construction phases and minimum cover of 3 feet is maintained after construction of finish grade.
2. All new & temporary highway lighting work including adjustment & readjustment of pullboxes will be paid under Item 622.1000.
3. Work shall be executed such that all luminaires remain in service every night from dusk to dawn.
4. Reroute existing #14 tap to feeder in new pullbox; see detail on Sheet No. C-6. Provide ground rod in pullbox and bond standard to it with #6 bare conductor.
5. Distribute connection of lights among three phases.
6. Relocate exist. pier luminaires to other pier face or underside of pier bent as shown and reconnect to existing aerial feeder. See Sheet Nos C-12 & C-13 for exist. aerial feeders. (Payment will be made under item 622.1000)
7. Provide cast metal conduit bodies as required to limit aggregate conduit bends to 270° between pulling points.

#### NOTE A:

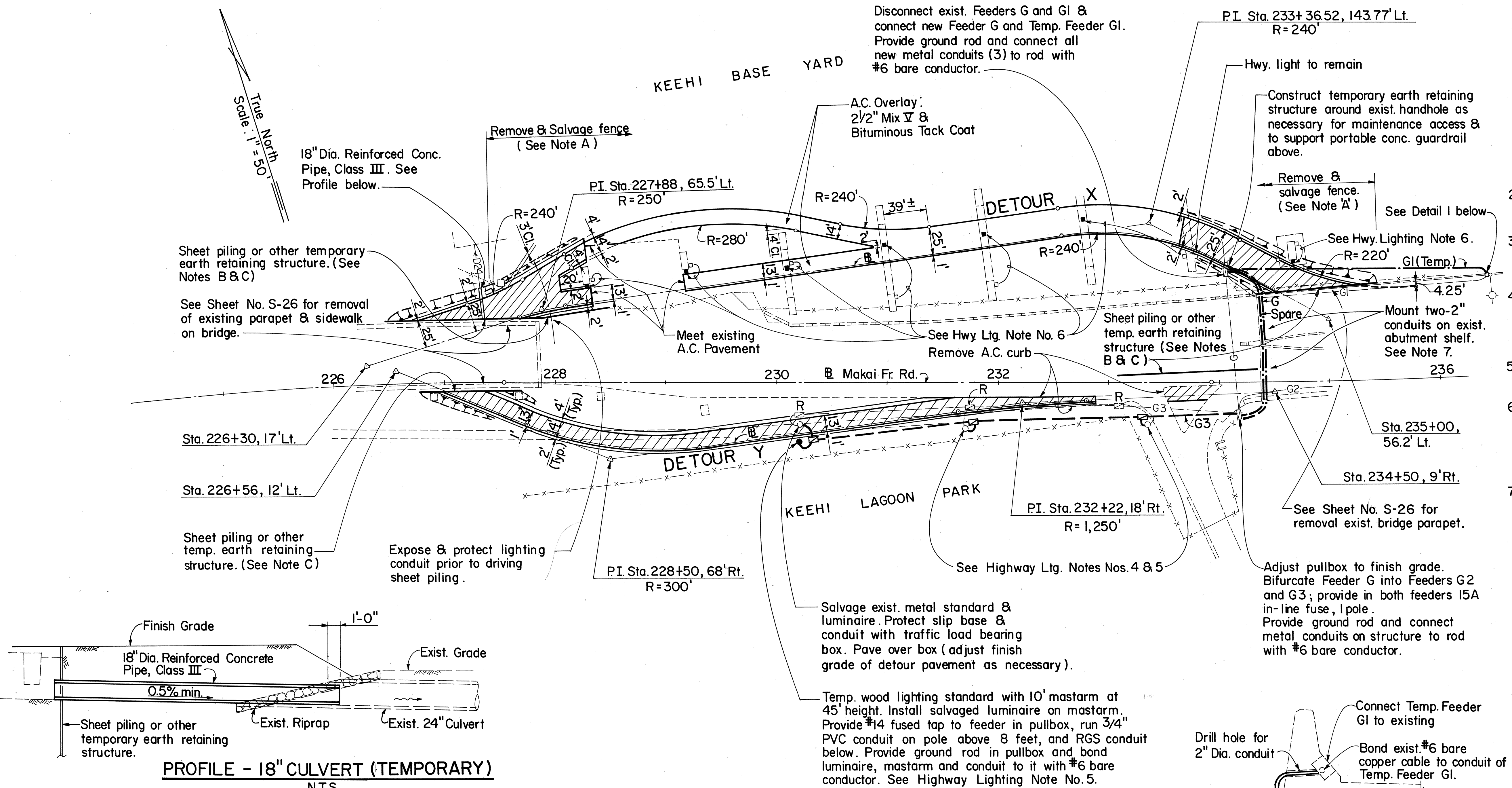
Remove and stockpile existing fence and gate and reconstruct them at the location shown on Sheet C-3. Payment will be made under "Reset 6-Feet Chain Link Fence." (See General Note No.3 on Sheet C-1.)

#### NOTE B :

Locate temp. earth retaining structure such that it does not interfere with construction of bridge and proposed location of Portable Concrete Guardrail.

#### NOTE C :

Shop drawings of temporary earth retaining structures shall be submitted for approval to the engineer. Payment for furnishing, installing and removal of sheet piling, shoring & other temporary earth retaining structures will be considered incidental to various contract items.



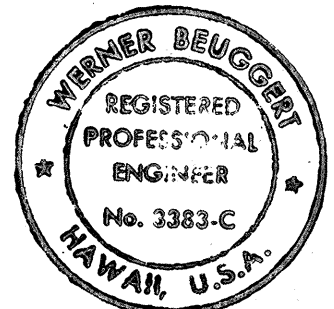
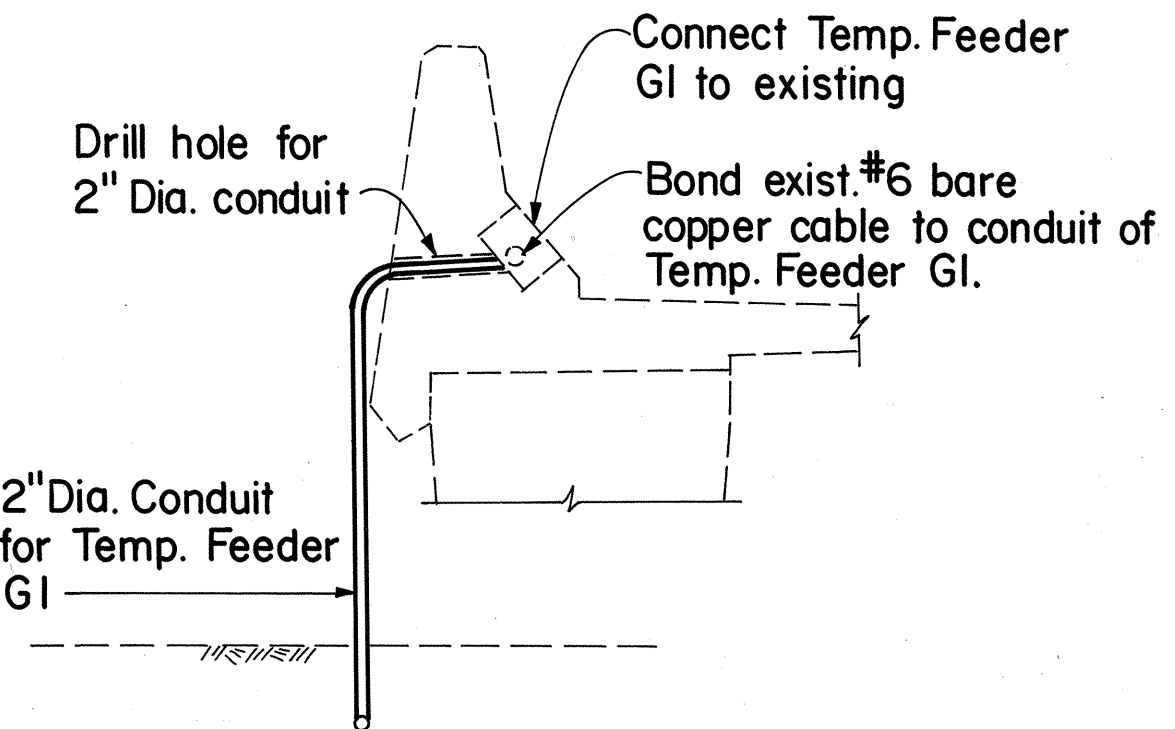
DETOUR Y			DETOUR X		
MAKAI FR. RD. STA.	PAVT. ELEV. AT	CROSS SLOPE	MAKAI FR. RD. STA.	PAVT. ELEV. AT	PAVT. ELEV. AT LEFT EDGE OF PAVT.
227+50	5.9	-1.0%	227+25	-	7.4
228+00	5.7	-2.5%	227+50	-	7.2
228+50	5.6	-2.5%	227+75	7.0	6.7
229+00	5.5	-2.5%	228+00	6.6	6.1
229+50	5.4	-1.0%	233+75	6.4	CROSS SL.+1.0%
230+00	5.3	+1.0%	234+00	7.4	CROSS SL.+1.0%
230+50	5.2	+2.0%	234+25	8.5	CROSS SL. 0%
231+00	5.4	+2.0%	234+50	9.1	CROSS SL.-1.0%

Cross Slope : + Left edge higher than  
- Left edge lower than

SL. = SLOPE

#### LEGEND

- Detour Pavement (See Sht. C-4)
- 2 1/2" A.C. Mix Overlay
- Fill Slope
- 2" Non- Metallic Conduit (PVC); 3#6, 1/C, 600V
- 2" Rigid Galvanized Steel Conduit ; 3#6, 1/C, 600V
- Pullbox Type A
- Remove Exist. Lighting Pullbox & Conduits.
- Existing Lighting Conduit



STATE OF HAWAII  
DEPARTMENT OF TRANSPORTATION  
HIGHWAYS DIVISION

#### DETOUR CONSTRUCTION (CONSTR. PHASE I)

KEEHI INTERCHANGE  
Trestle Structure at Makai Front Rd.  
FAIP NO. IR - HI - (210):17

SCALE: 1" = 50'  
DATE: MAY 1, 1988  
SHEET No. C-2 OF 13 SHEETS