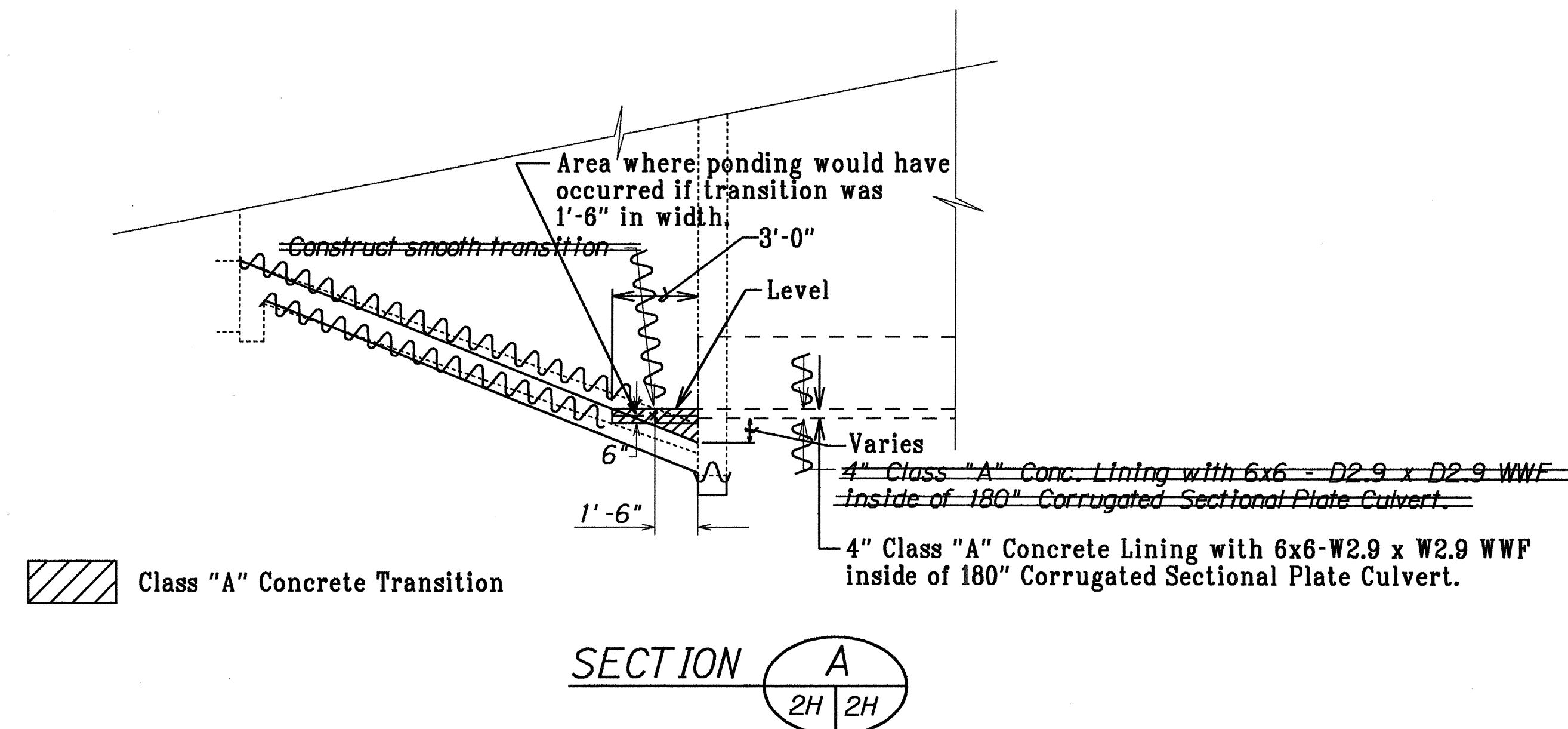
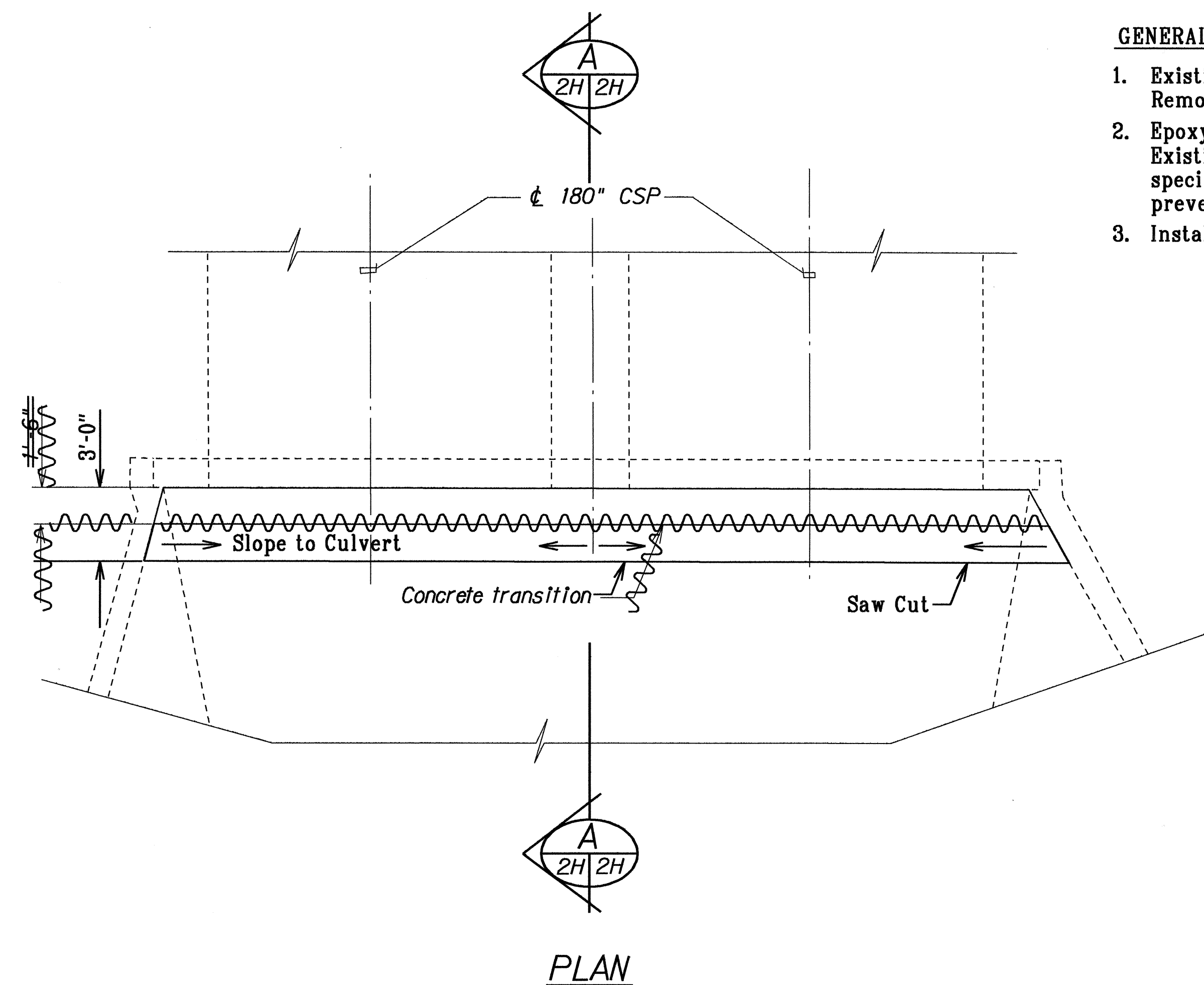


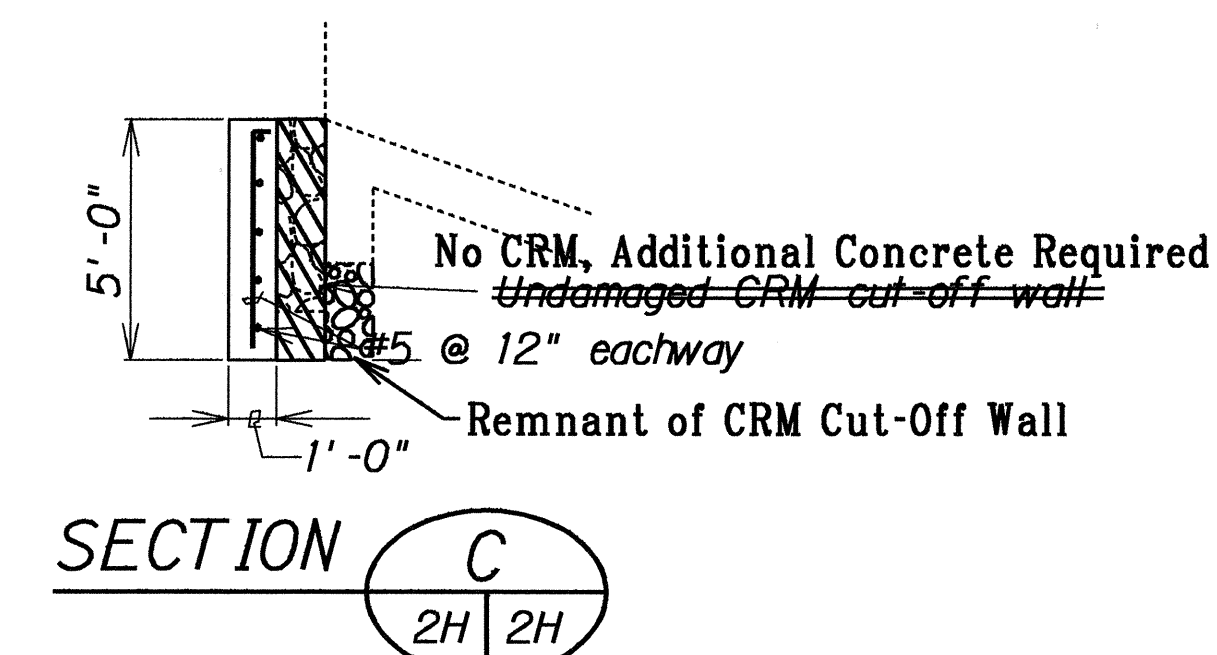
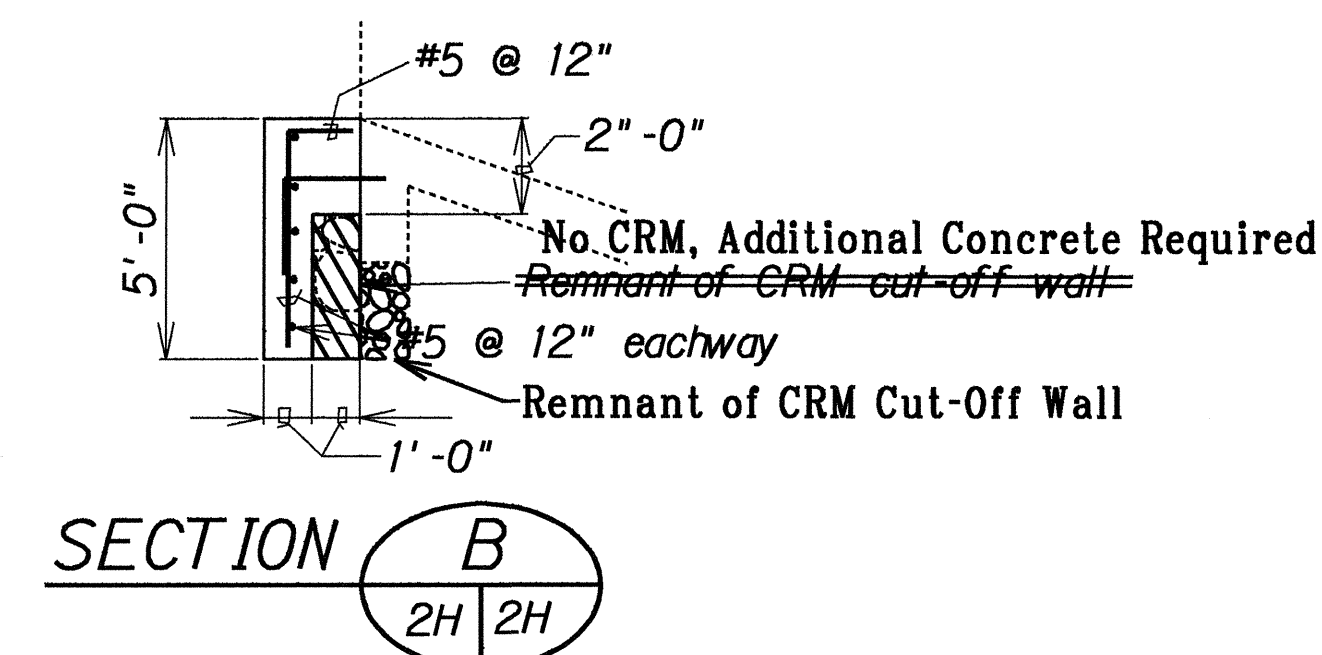
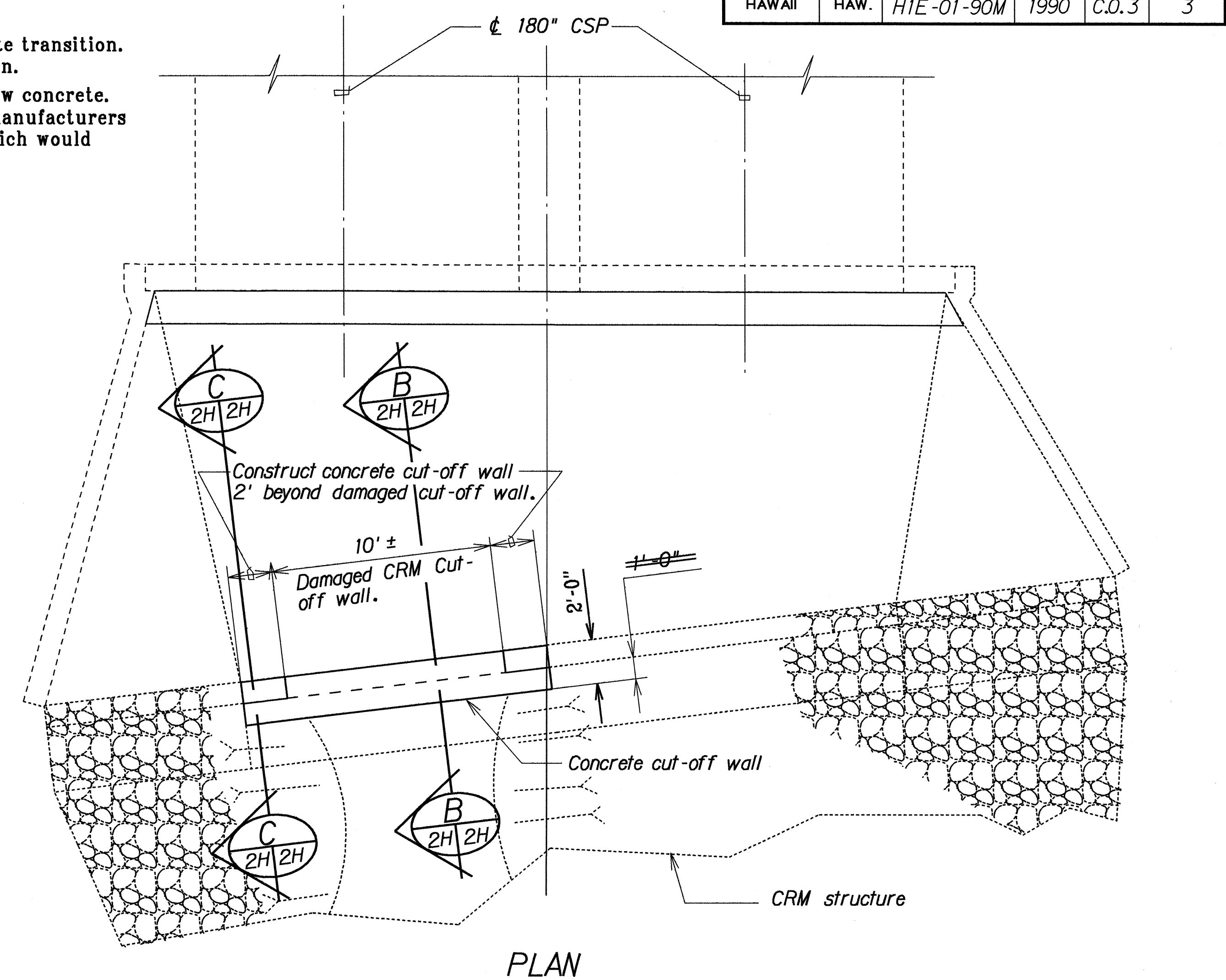
FED. ROAD DIST. NO.	STATE	PROJ. NO.	FISCAL YEAR	SHEET NO.	TOTAL SHEETS
HAWAII	HAW.	H1E-01-90M	1990	C.O.3	3

GENERAL NOTES:

- Existing inlet structure shall be saw-cut at concrete transition. Remove existing concrete within concrete transition.
- Epoxy shall be used to bond existing concrete to new concrete. Existing concrete surface must be cleaned as per manufacturers specifications of any debris, loose material, etc. which would prevent proper adhesion of epoxy.
- Install 6x6 W2.9 x W2.9 welded wire fabric.



MODIFICATION TO INLET STRUCTURE
Scale: 1/4" = 1'-0"



CONCRETE CUT-OFF WALL
Scale: 1/4" = 1'-0"

LEGEND FOR AS-BUILT POSTINGS	
	Squiggly line for as-built deletion
	Double line for as-built deletion
Roadway	Text for as-built posting

9/6/90 Construct concrete cut-off wall.
DATE REVISION

STATE OF HAWAII DEPARTMENT OF TRANSPORTATION HIGHWAYS DIVISION	
DRAINAGE DETAILS	
INTERSTATE ROUTE H-1 Repair of 180-Inch Structural Plate Culvert Vicinity of Pearl Country Club	
PROJ. NO. H1E-01-90M	
Scale: As Shown	Date: Dec., 21, 1989
SHEET No. 2H OF 2 SHEETS	

"AS-BUILT"

C.O. 3