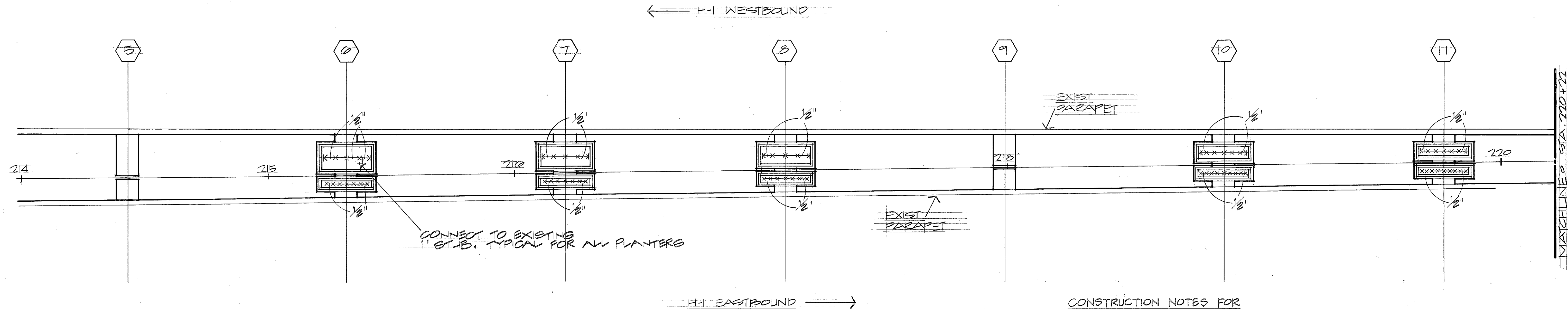


FED. ROAD DIST. NO.	STATE	FED. AID PROJ. NO.	FISCAL YEAR	SHEET NO.	TOTAL SHEETS
HAWAII	HAW.	IR-HI-1(200):17	1986	11	22



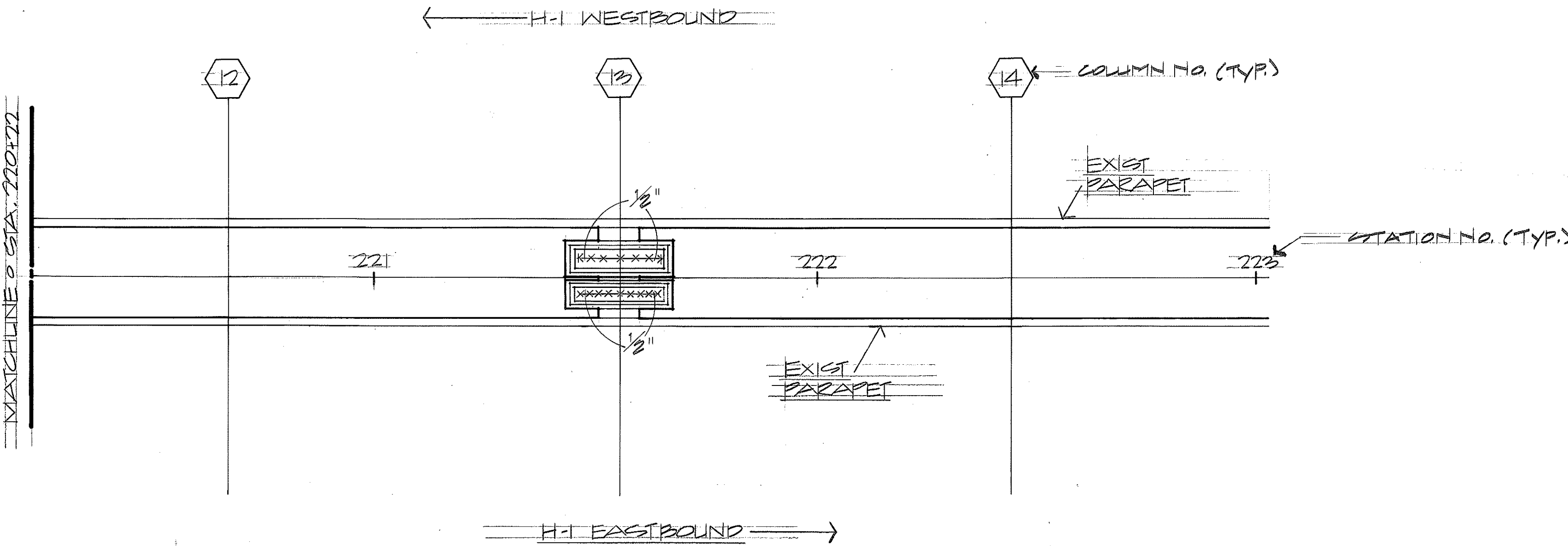
CONSTRUCTION NOTES FOR 16" GAS TRANSMISSION LINE

- THE GASCO 16 INCH HIGH PRESSURE GAS TRANSMISSION LINE IS PLASTIC COATED AND CATHODICALLY PROTECTED. THE CONTRACTOR SHALL USE EXTREME CAUTION WHEN WORKING NEAR THE GAS PIPELINE.
- PRIOR WRITTEN CLEARANCE MUST BE OBTAINED FROM GASCO MAPS AND RECORDS, 515 KAMAKEE STREET, AT LEAST FIVE WORKING DAYS PRIOR TO THE START OF EXCAVATION NEAR ANY GASCO PIPELINE.
- SINCE PIPELINE LOCATIONS ON FIELD MAPS ARE APPROXIMATE, THE CONTRACTOR, AFTER OBTAINING WRITTEN CLEARANCE, SHALL CALL GASCO A MINIMUM OF 48 HOURS BEFORE STARTING EXCAVATION TO ARRANGE FOR FIELD LOCATION OF THE PIPELINE. THE TELEPHONE NUMBER IS 547-3575 DURING BUSINESS HOURS AND 526-0066 AFTER HOURS.
- THE CONTRACTOR SHALL HAND-DIG TO EXPOSE GAS LINE BEFORE EXCAVATING WITH MACHINERY. THE CONTRACTOR SHALL EXCAVATE AND BACKFILL AROUND THE PIPELINE IN THE PRESENCE OF A GASCO REPRESENTATIVE. ALL BACKFILL WITHIN 12 INCHES OF THE PIPELINE SHALL BE SELECT CUSHION MATERIAL APPROVED BY GASCO.
- MINIMUM VERTICAL AND HORIZONTAL CLEARANCE BETWEEN THE PIPELINE AND OTHER CONDUITS, PIPELINES OR OTHER STRUCTURES SHALL BE 24 INCHES. ADEQUATE SUPPORT AND PROTECTION SHALL BE PROVIDED FOR ANY SECTION OF GAS PIPELINE EXPOSED TO THE TRENCH. SUCH SUPPORT AND PROTECTION SHALL BE APPROVED BY GASCO.
- THE CONTRACTOR SHALL WORK IN AN EXPEDITIOUS MANNER TO KEEP THE UNCOVERED GAS LINE EXPOSURE TO A MINIMUM.
- THE CONTRACTOR SHALL NOTIFY GASCO IMMEDIATELY AFTER DAMAGE HAS BEEN CAUSED TO ANY EXISTING PIPELINES, COATINGS OR CATHODIC PROTECTION DEVICES. THE CONTRACTOR SHALL BE LIABLE FOR ANY DAMAGES TO GASCO FACILITIES. REPAIR WORK ON THIS DAMAGE SHALL BE PERFORMED BY GASCO, WITH PAYMENT FOR THIS WORK TO BE BORNE BY THE CONTRACTOR.



THIS WORK WAS PREPARED BY
ME OR UNDER MY SUPERVISION

M. M. M.



VIADUCT IRRIGATION PLAN

SCALE: 1" = 20'

SURVEY PLOTTED BY	DATE
DRAWN BY	
DESIGNED BY	
QUANTITIES BY	
CHECKED BY	
ORIGINAL PLAN	
NOTE BOOK	
No.	

7-22-87	ADDED NOTES
DATE	REVISION

STATE OF HAWAII
DEPARTMENT OF TRANSPORTATION
HIGHWAYS DIVISION

VIADUCT IRRIGATION PLAN

KEEHI INTERCHANGE LANDSCAPING
(WEST OF MOANALUA STREAM)
FAIP NO. IR-HI-1(200):17

SCALE: 1" = 20'-0" DATE: MAY 1986

SHEET NO. 11 OF 20 SHEETS