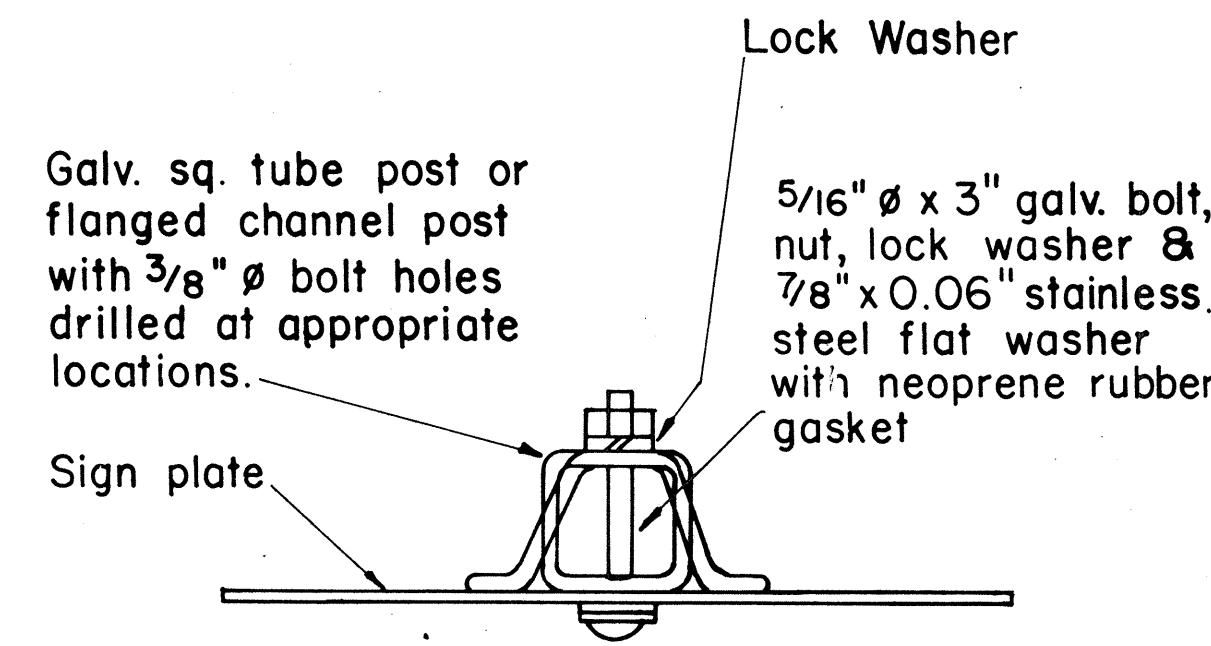


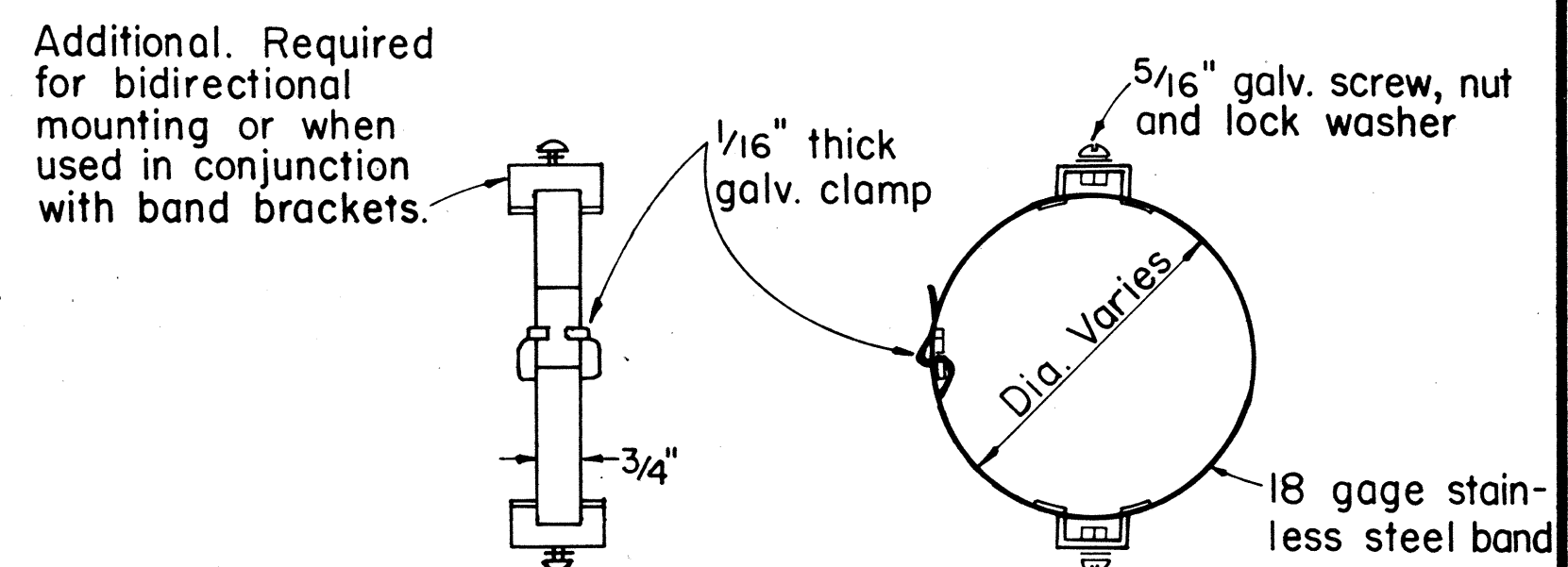
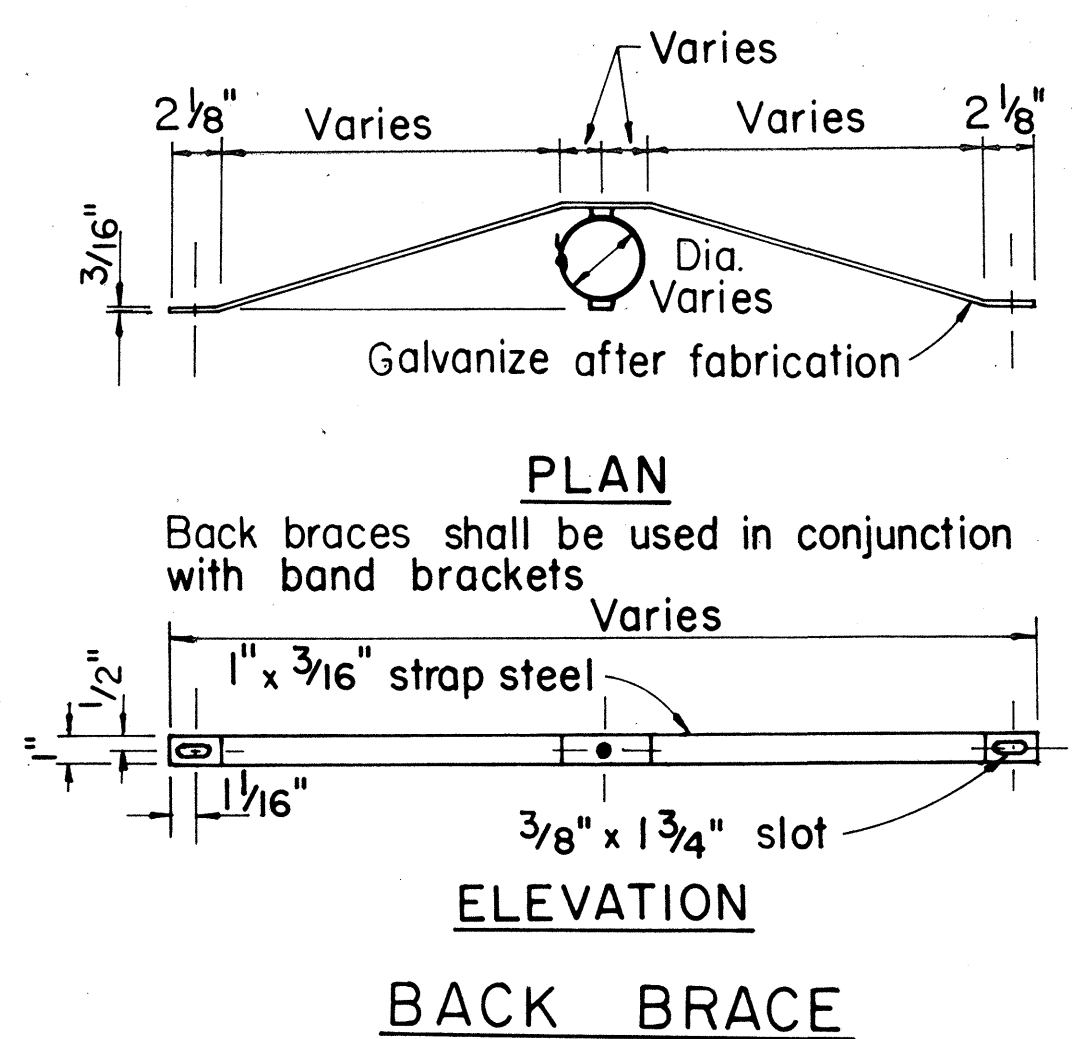
FED. ROAD DIST. NO.	STATE	FED. AID PROJ. NO.	FISCAL YEAR	SHEET NO.	TOTAL SHEETS
HAWAII	HAW.	HPR-0010 (8) UNIT 2	1986	5	7

GENERAL NOTES

- Signs shall be placed in conformance with positions shown and described in the "Manual on Uniform Traffic Control Devices for Streets and Highways", 1978, Part II, Section 2A-21, as amended, and as supplemented herein.
- Sign 48" and wider or larger than 10 sq. ft. in area shall be mounted on two or more sign posts except as noted below.
- Signs 48" and wider or larger than 10 sq. ft. in area may be mounted on objects other than sign posts (i.e. on highway lighting poles) as follows:
 - Signs 48" and wider but less than 10 sq. ft. in area shall be mounted with a minimum of two sets of band bracket and back braces.
 - Signs larger than 10 sq. ft. and less than 28 sq. ft. in area shall be mounted with a minimum of two sets of band brackets and back braces.
 - Signs larger than 28 sq. ft. in area shall be mounted with a minimum of three sets of band bracket and back braces.
- All parking restriction signs with arrows shall be mounted 45° to the line of traffic flow.
- Sign posts shall extend 3 1/2" above each sign, where required, for attachment of City and County street name signs.
- (R) or (L) indicates right or left and shown on the plans.
- See plans for special details of signs along bikeways.
- The minimum lateral distances shown are guidelines and shall be exceeded whenever possible. The Contractor shall place signs at the maximum practical lateral distance from the edge of the traveled way up to 30 feet and shall utilize protected locations whenever possible. Final locations of all signs shall be approved by the Engineer.
- Signs in medians shall be placed at midpoint of median up to a maximum distance of 30 feet from the edge of traveled way. When appropriate, signs for opposing directions shall be placed back to back.
- Anchor bases shall be installed for all signpost installations, unless otherwise shown or directed. See sheets DT 100A and DT 100B.



GALVANIZED SQUARE TUBE OR FLANGED CHANNEL POST



LEFT SIDE VIEW PLAN BAND BRACKET

APPROVAL RECOMMENDED:
Erich Tanaka 10/14/83
 TRAFFIC ENGINEER DATE

APPROVED:
P. Fujiyama 10-18-83
 ASSISTANT CHIEF, ENGINEERING DATE

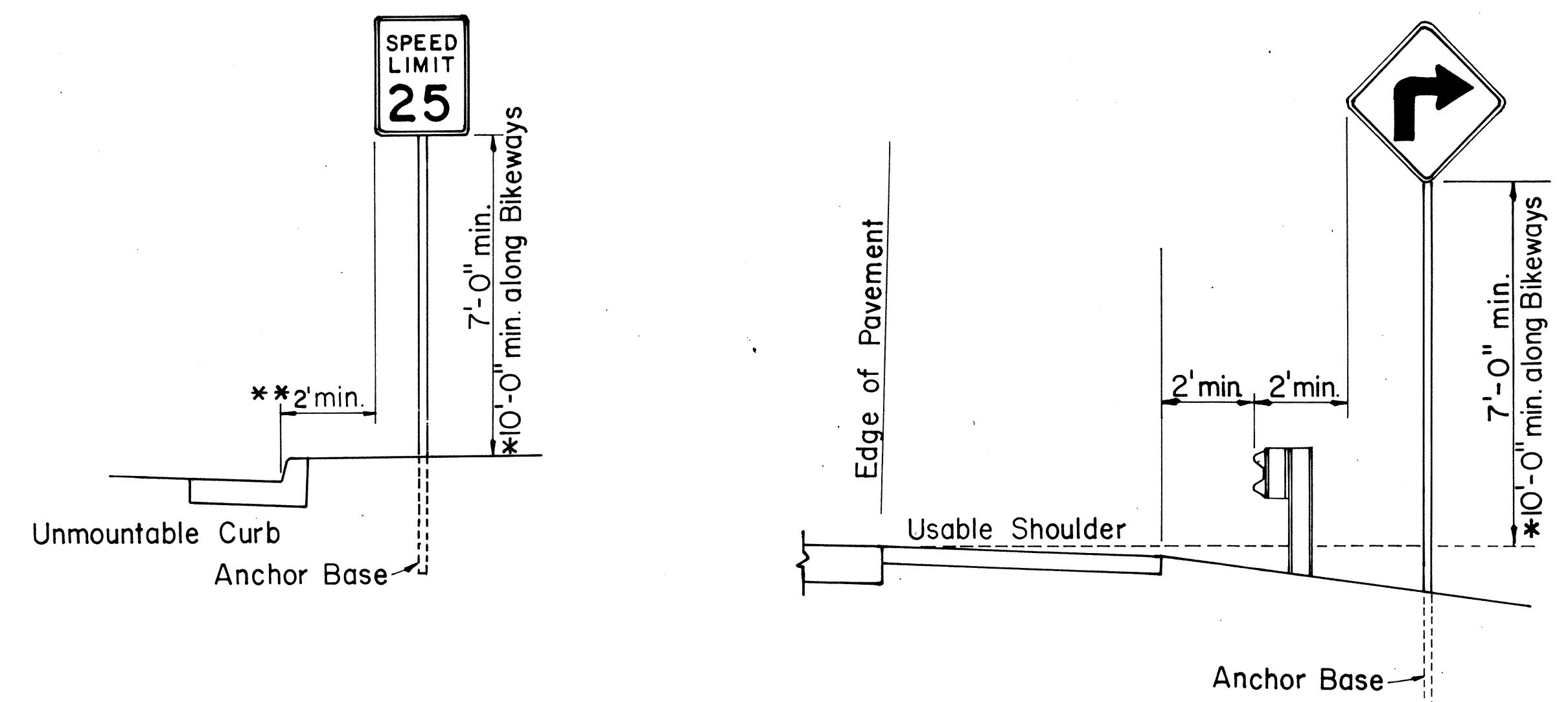
TYPICAL MOUNTING DETAILS

NO.	REVISION	APPROVED BY	DATE
1	Supersedes Sht. DT 100 approved 11/15/77	<i>[Signature]</i>	10-18-83

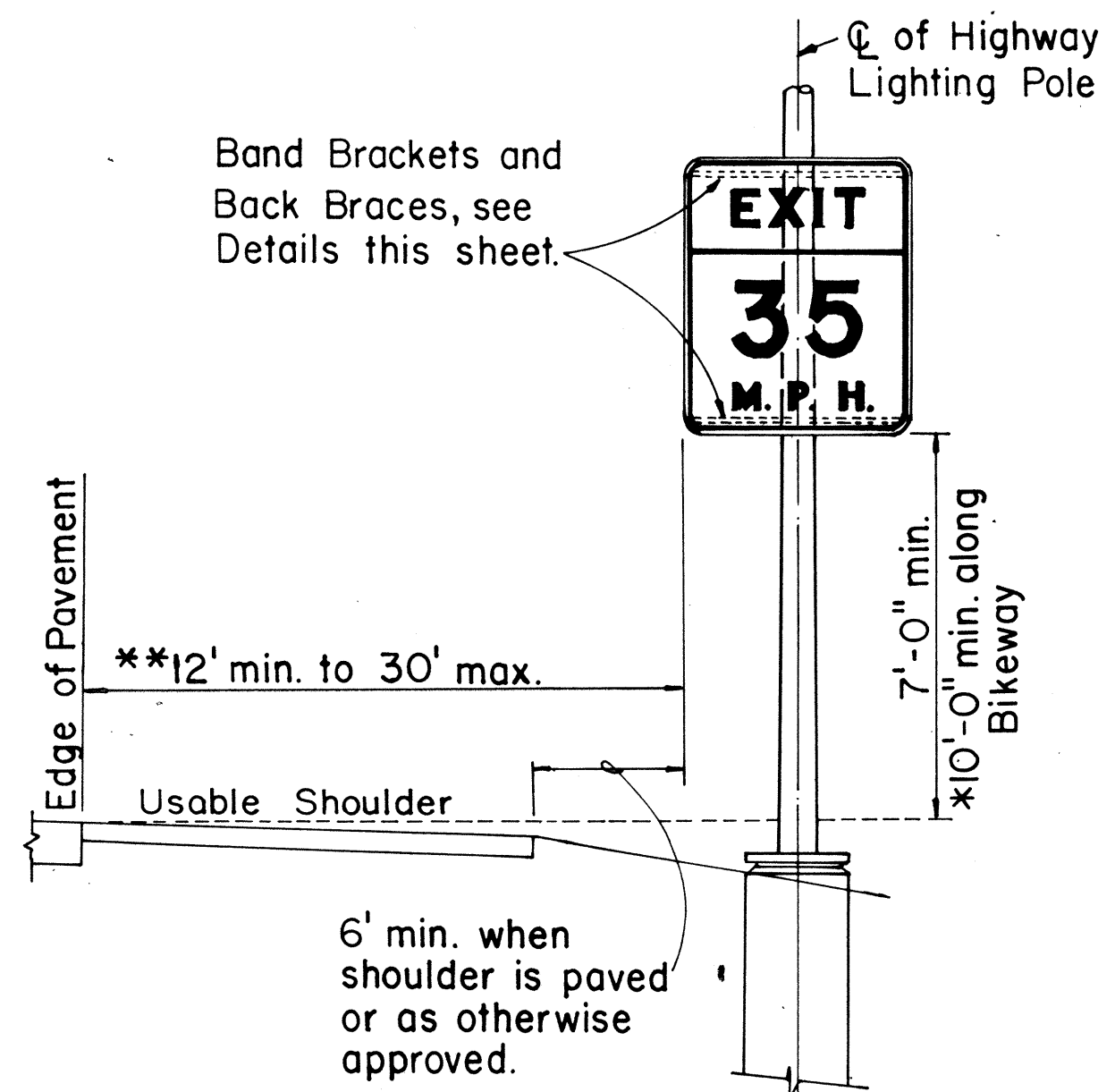
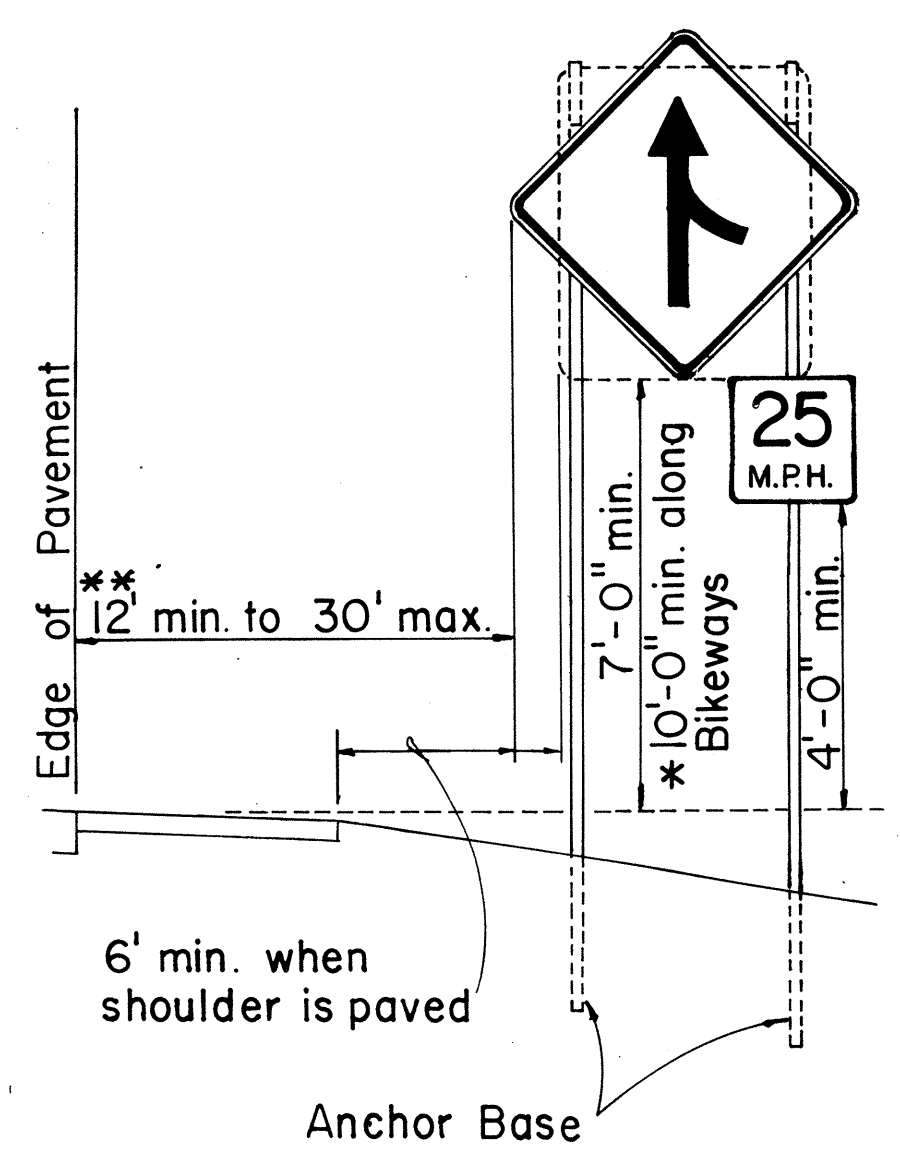
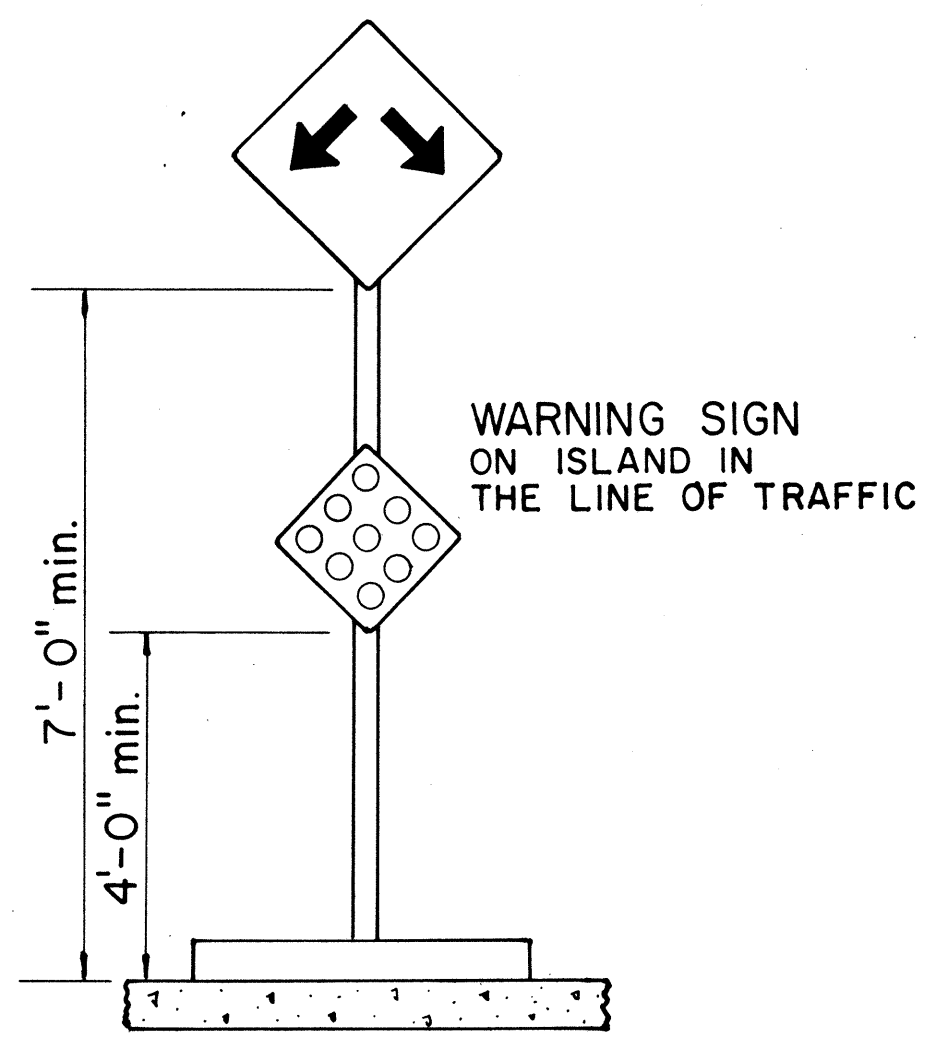
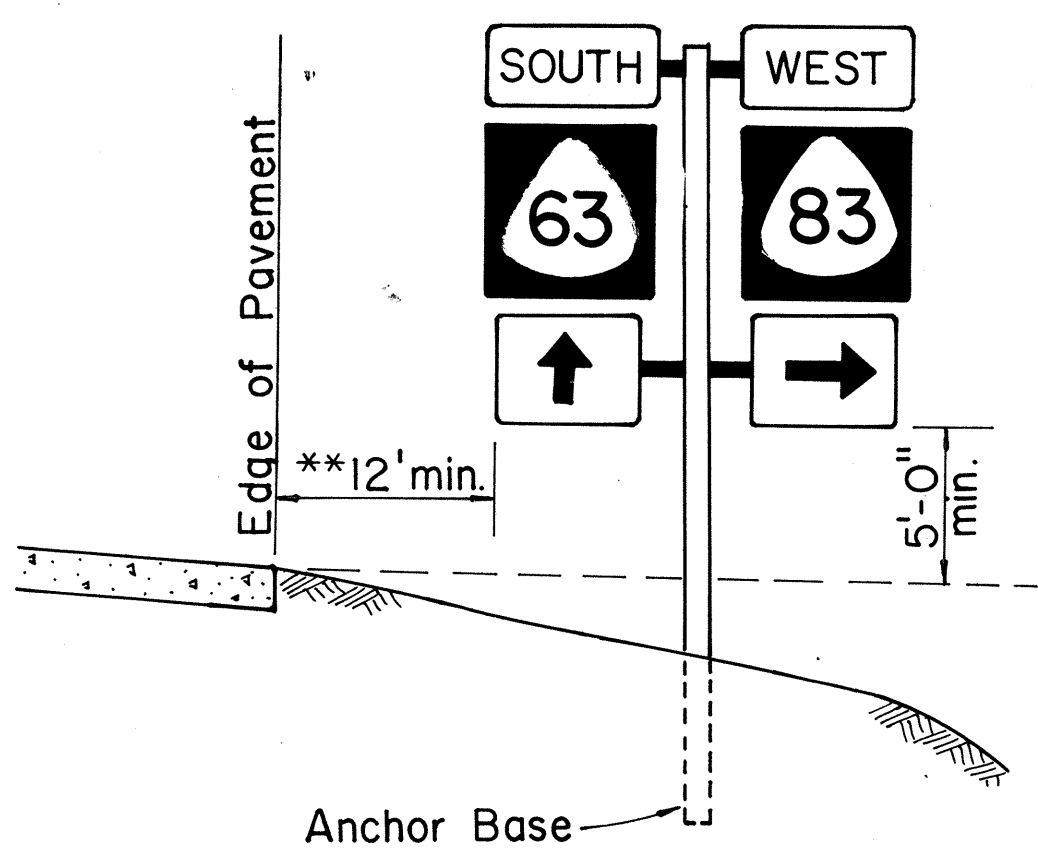
STATE OF HAWAII
 DEPARTMENT OF TRANSPORTATION
 HIGHWAYS DIVISION

STANDARD DETAILS
 MISCELLANEOUS SIGN DETAILS

Not to Scale: Oct. 1983
 SHEET NO. 1 OF 3 SHEETS DT 100



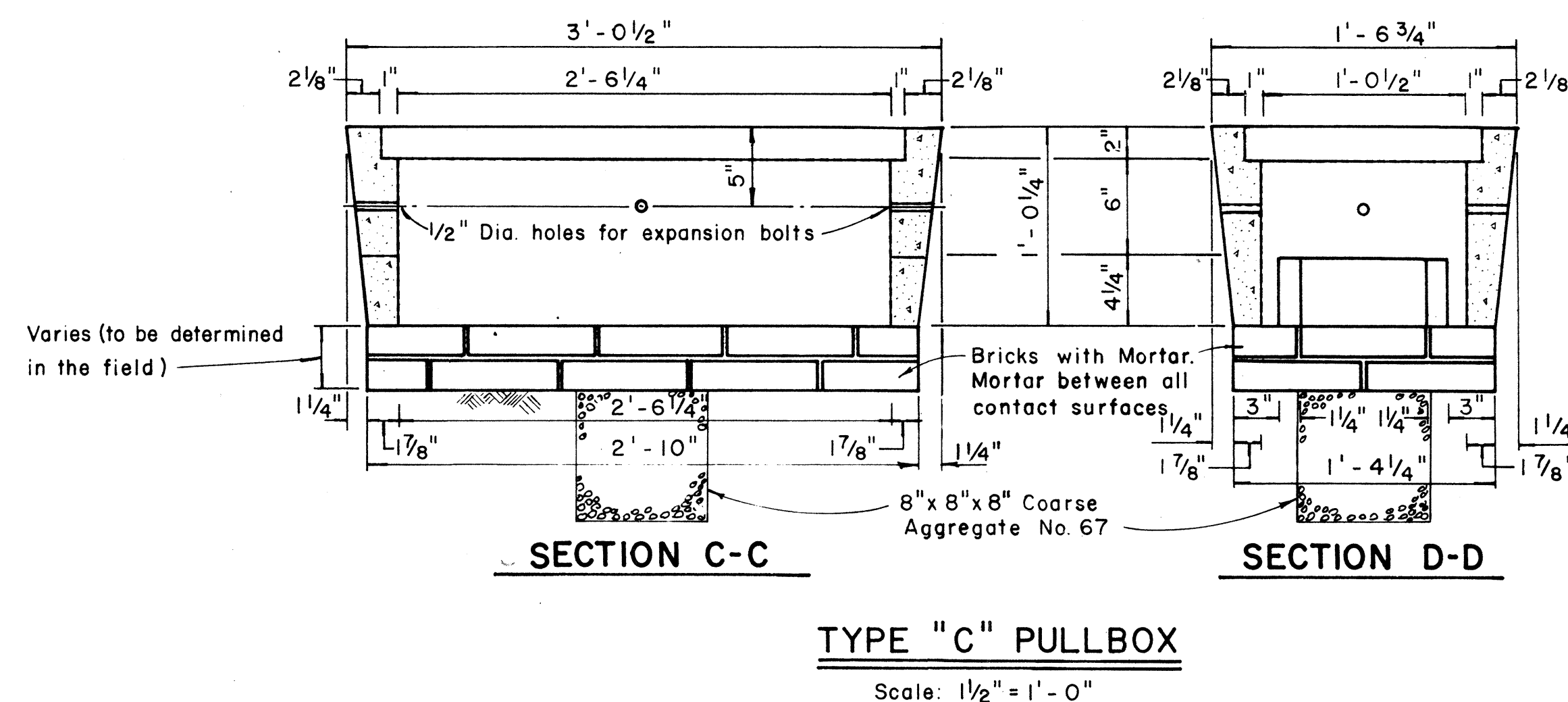
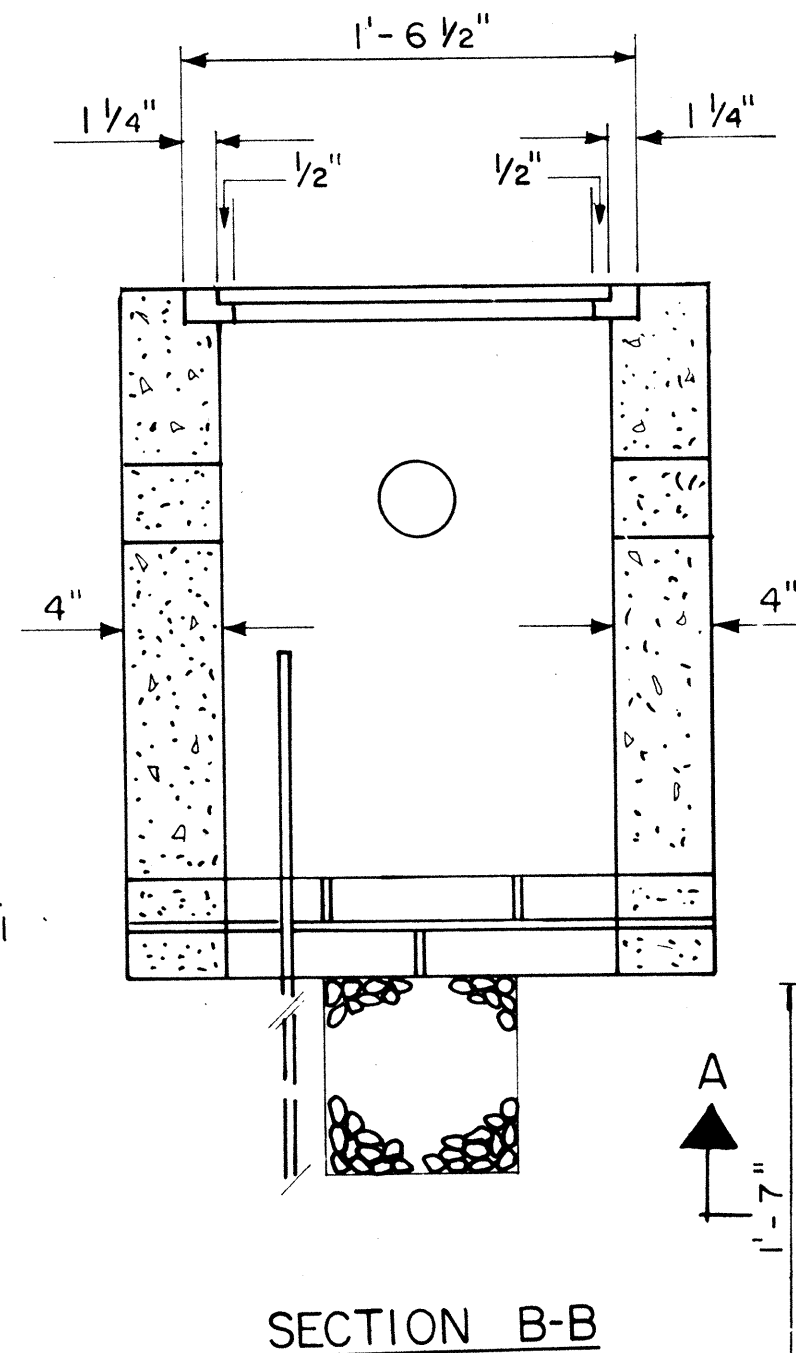
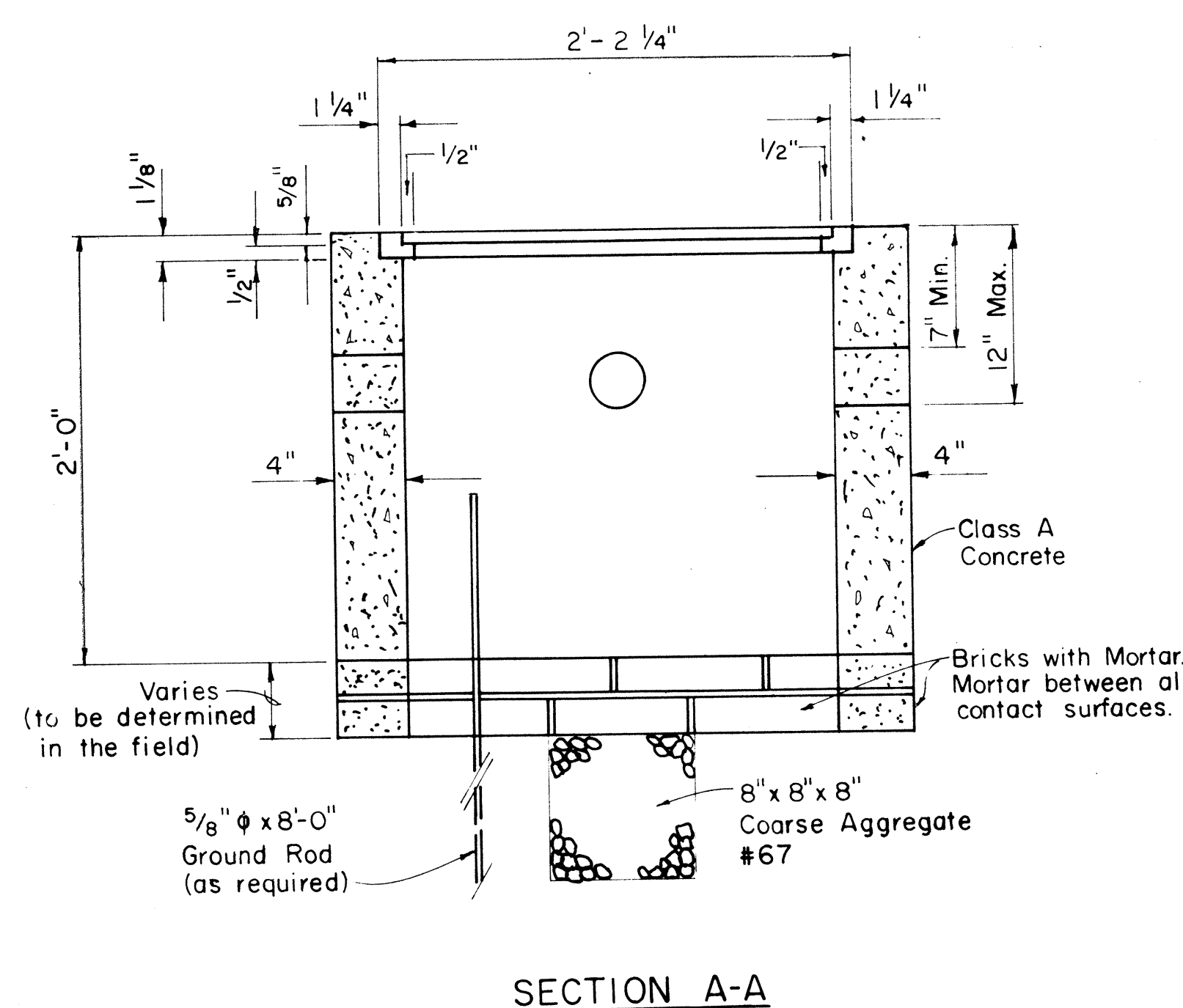
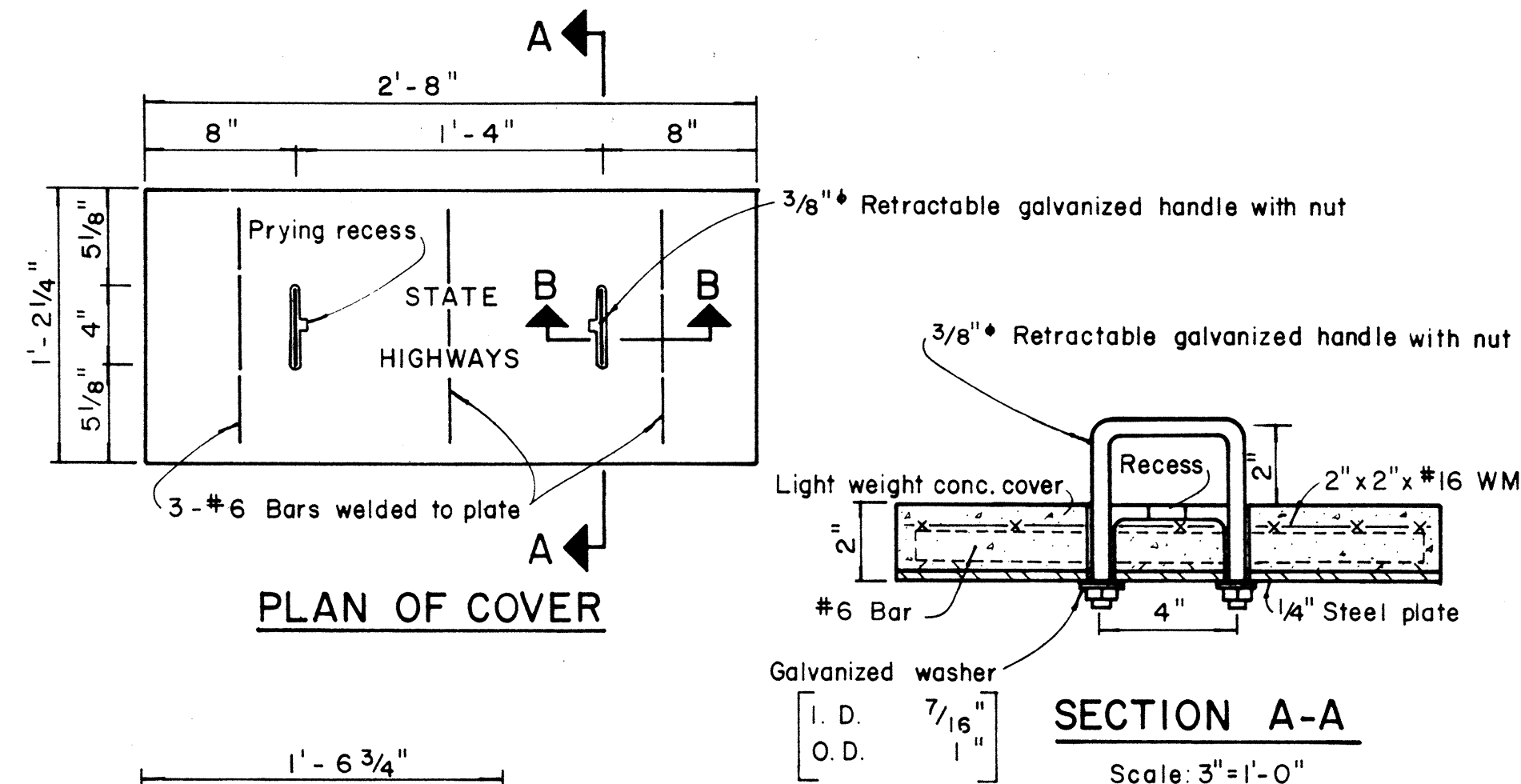
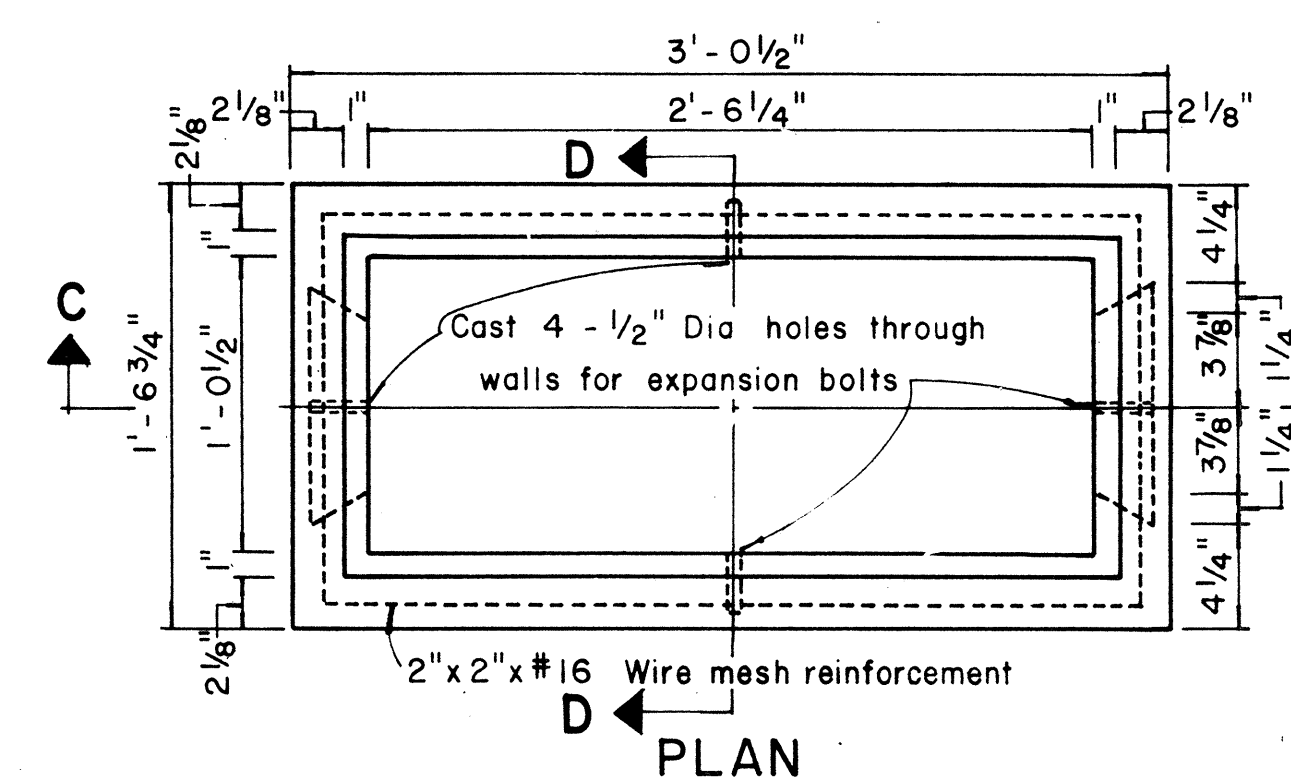
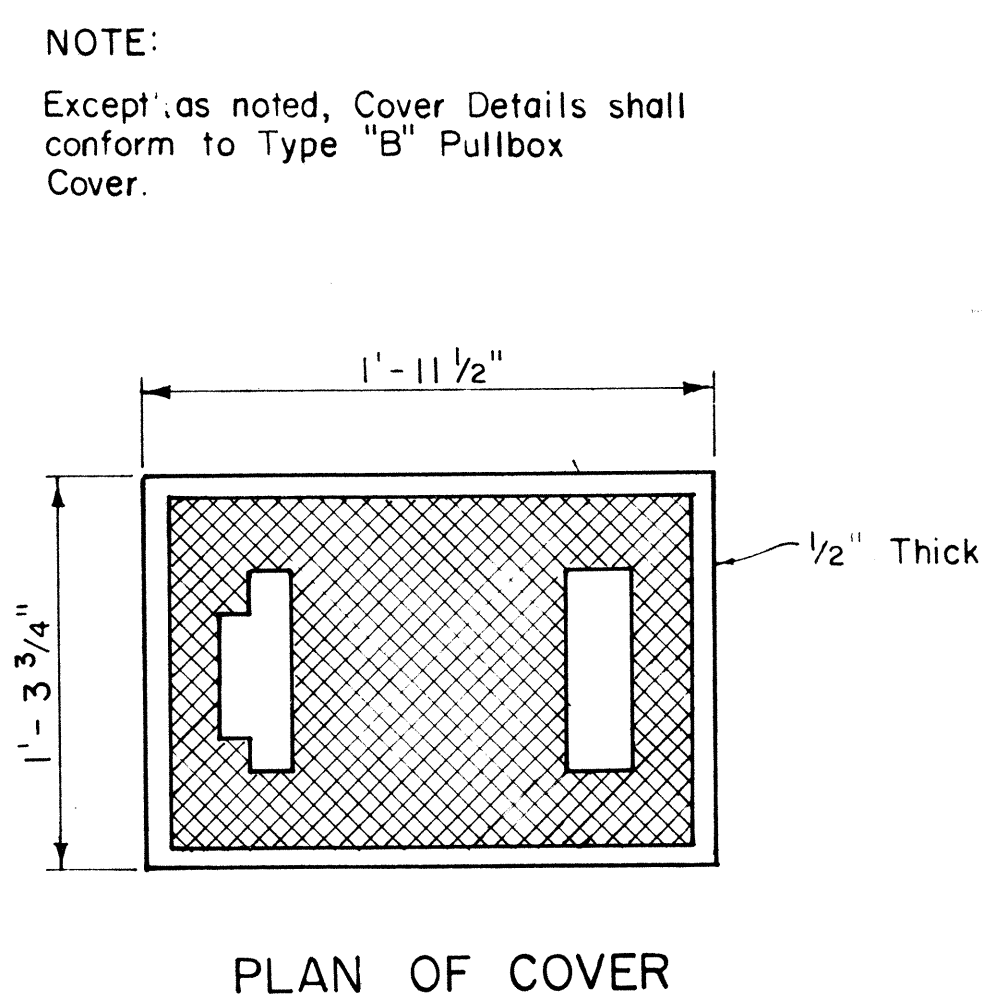
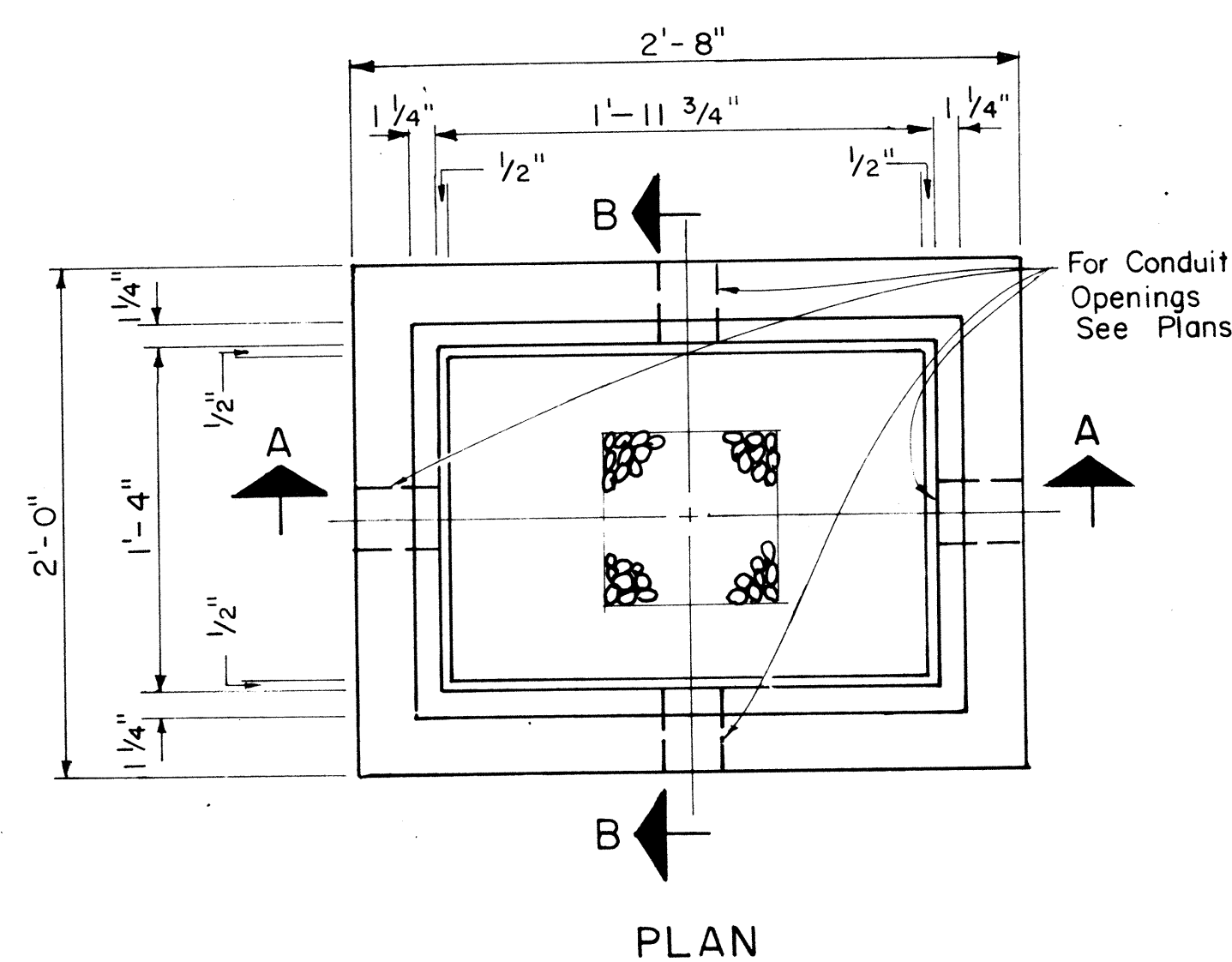
ROADSIDE ASSEMBLY RURAL DISTRICT



HEIGHT AND LATERAL LOCATION OF SIGNS TYPICAL INSTALLATION

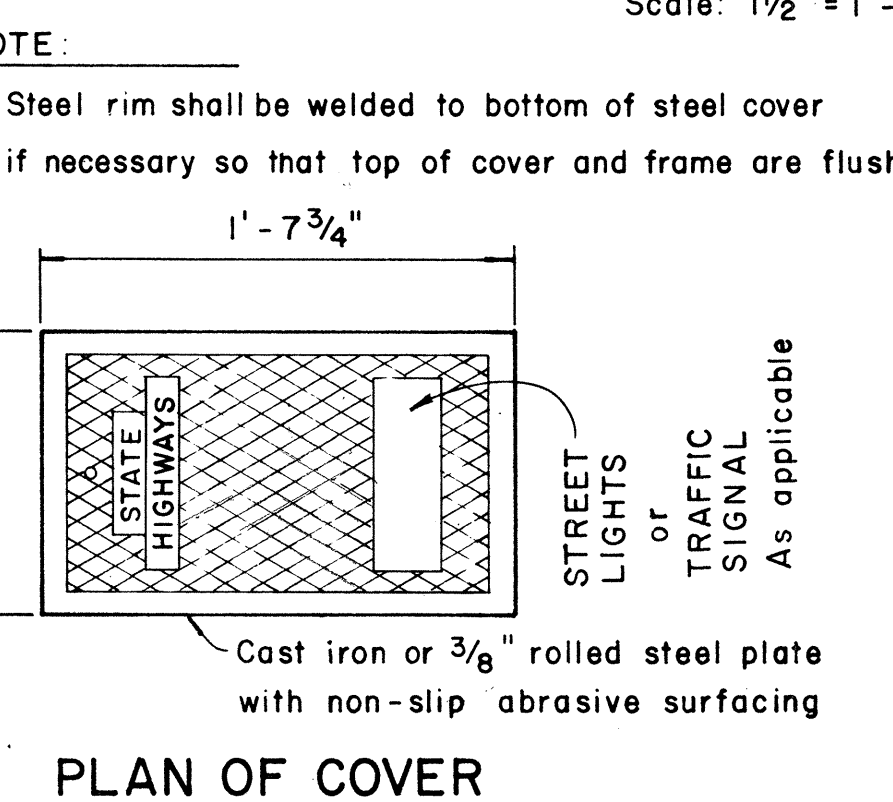
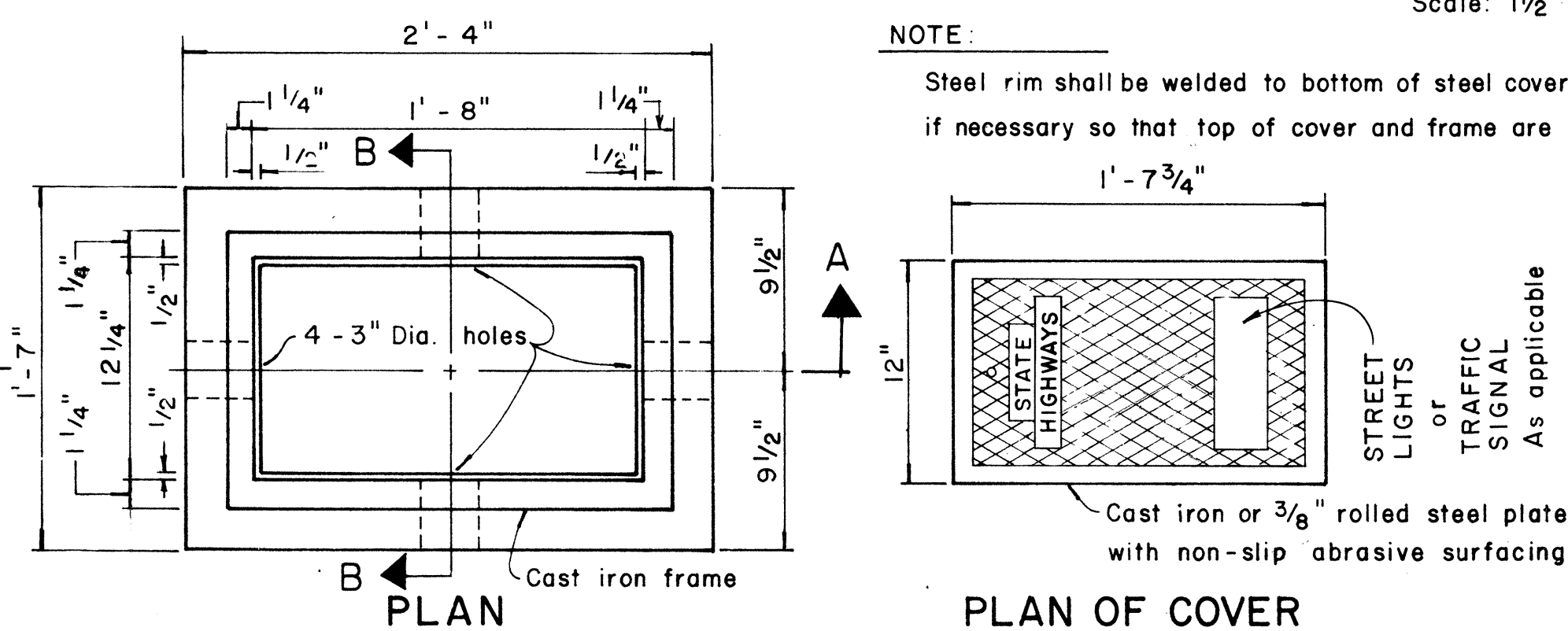
SURVEY PLOTTED BY	DATE
DRAWN BY	
TRACED BY	
NOTED BY	
CHECKED BY	
NO.	

FED. ROAD DIST. NO.	STATE	FED. AID PROJ. NO.	FISCAL YEAR	SHEET NO.	TOTAL SHEETS
HAWAII	HAW.	HPR-0010(8) UNIT 2	1986	7	7

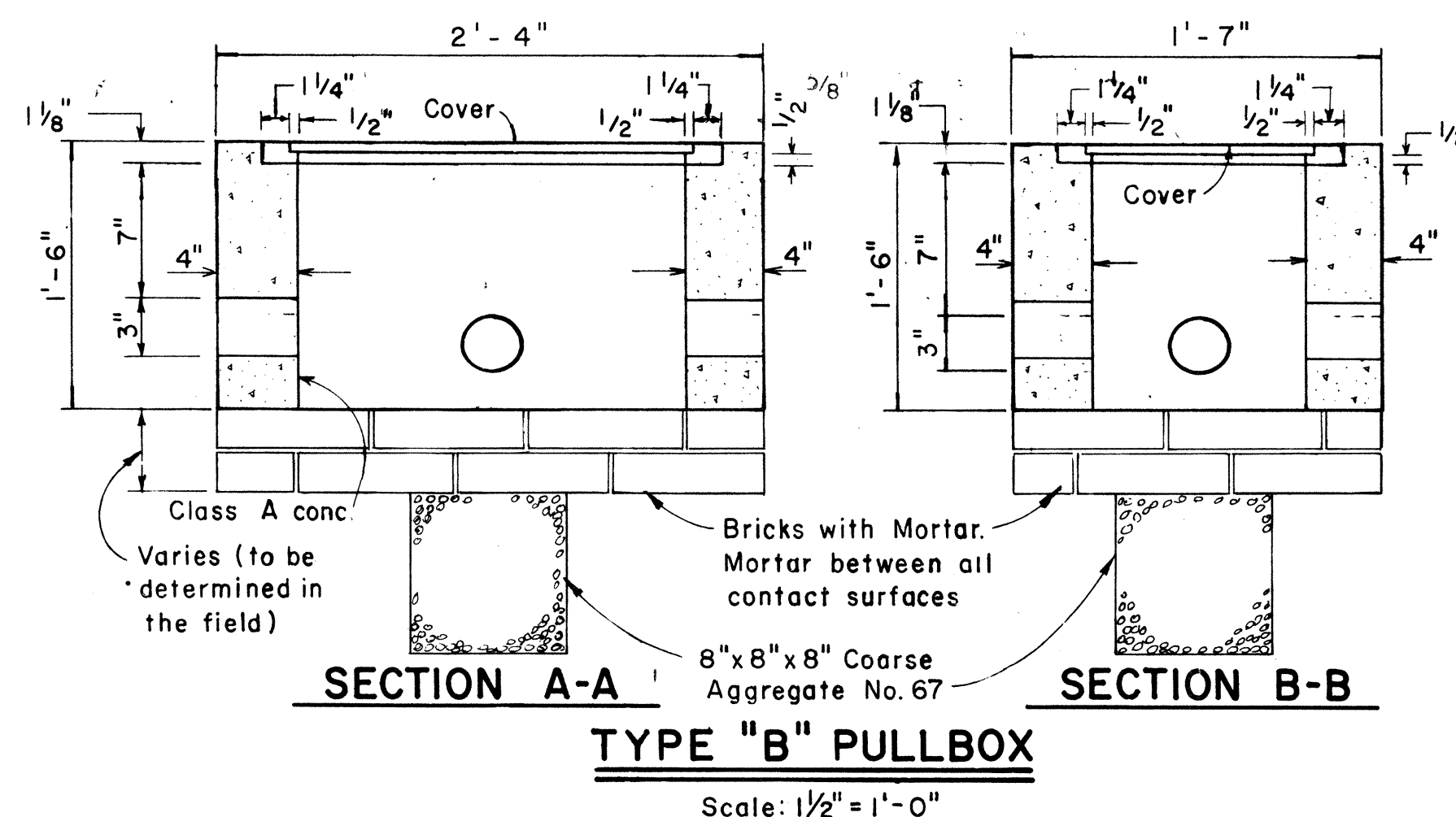


TYPE "C" PULLBOX
Scale: 1/2" = 1'-0"

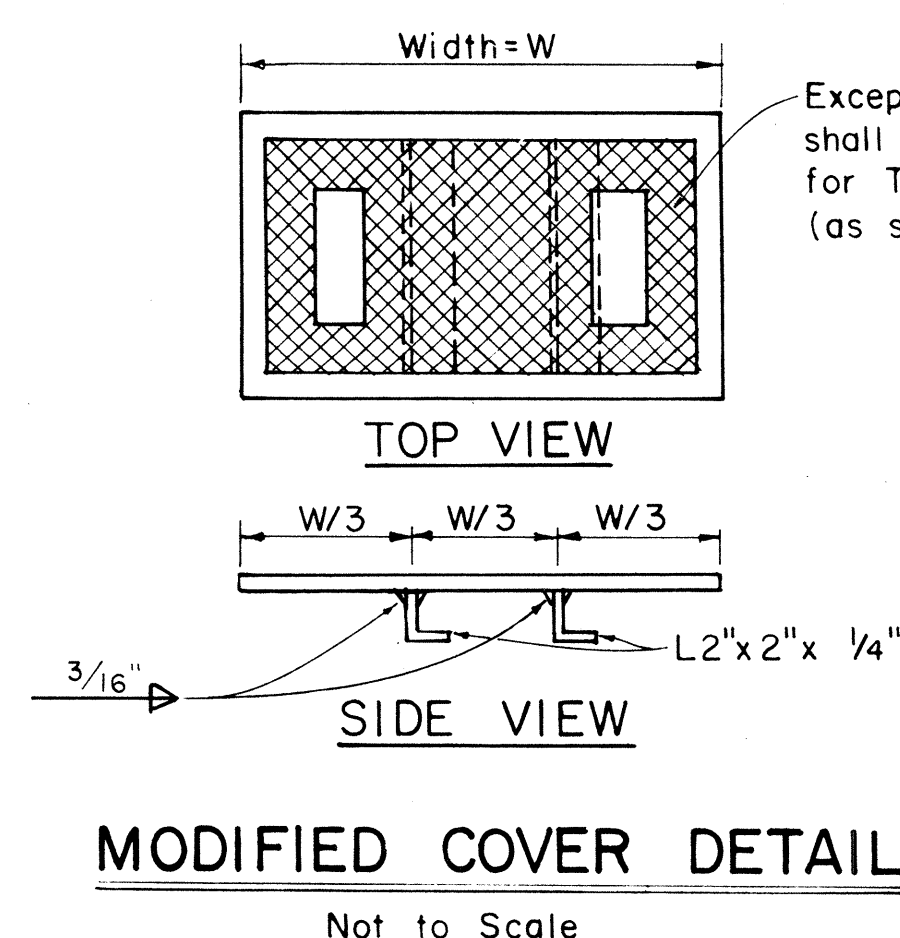
TYPE "A" PULLBOX
Scale: 1/2" = 1'-0"



NOTE:
Steel rim shall be welded to bottom of steel cover if necessary so that top of cover and frame are flush



TYPE "B" PULLBOX
Scale: 1/2" = 1'-0"



NOTE:
Hot dip galvanize after fabrication. Modified cover shall be furnished when called for on plans.

APPROVAL RECOMMENDED:
TRAFFIC ENGINEER
DATE: 12/29/82

APPROVED:
ASSISTANT CHIEF, ENGINEERING
DATE: 12-30-82

NO.	REVISION	APPROVED BY	DATE
1	Revised Type B & C Pullbox details	H.T.	3-5-86
2	Revised Type "A" Pullbox & Added Modified Cover.	H.T.	1-31-80
3	Revised Type B & C Pullbox details.	H.T.	2-1-83

STATE OF HAWAII
DEPARTMENT OF TRANSPORTATION
HIGHWAYS DIVISION
STANDARD DETAILS
PULLBOXES
Scale as noted Date

SHEET No. 3 OF 3 SHEETS DT 401

SURVEY PLOTTED BY	DATE
DRAWN BY	
CHECKED BY	
ORIGINAL PLAN	
NOTE BOOK	
No.	