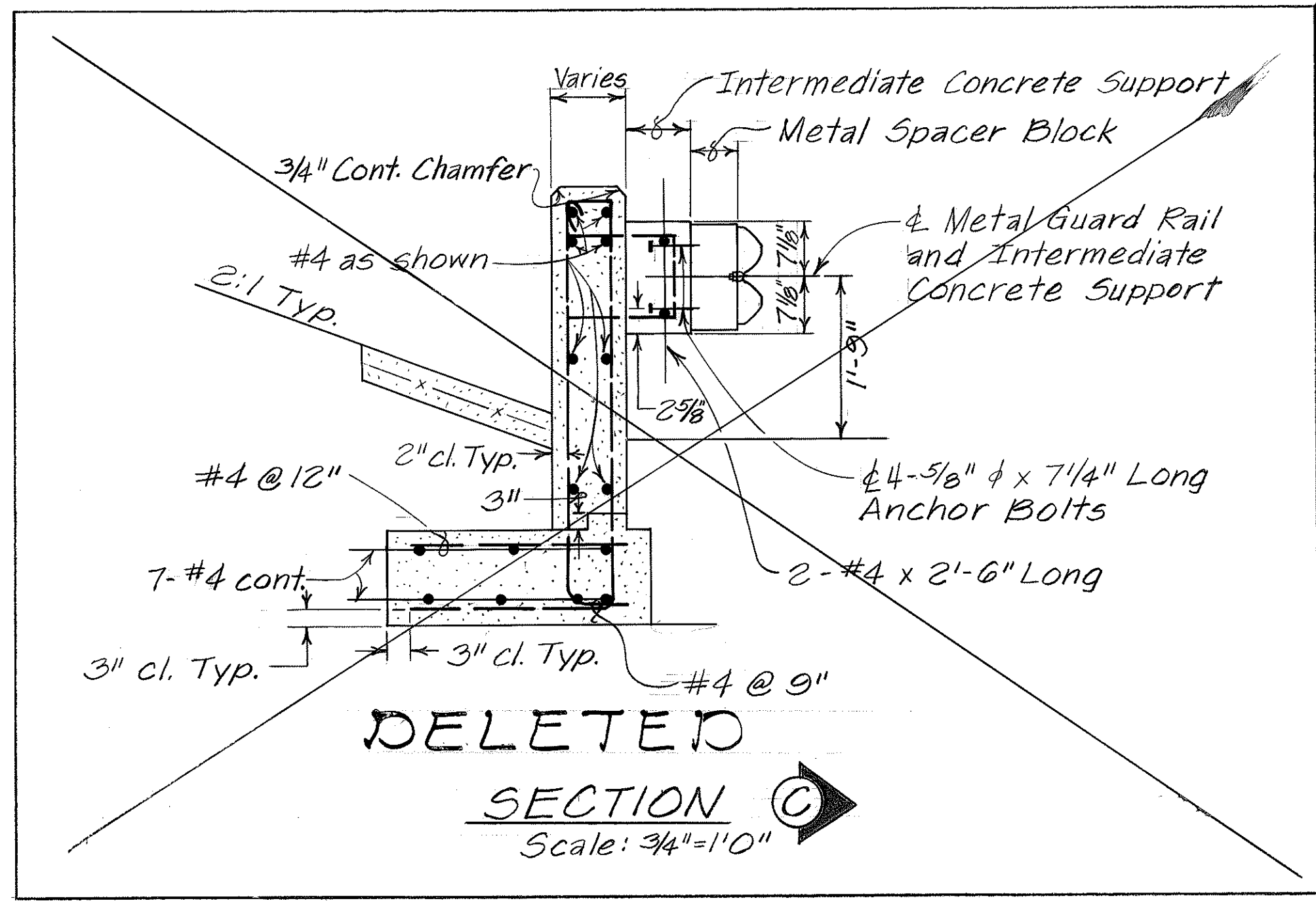
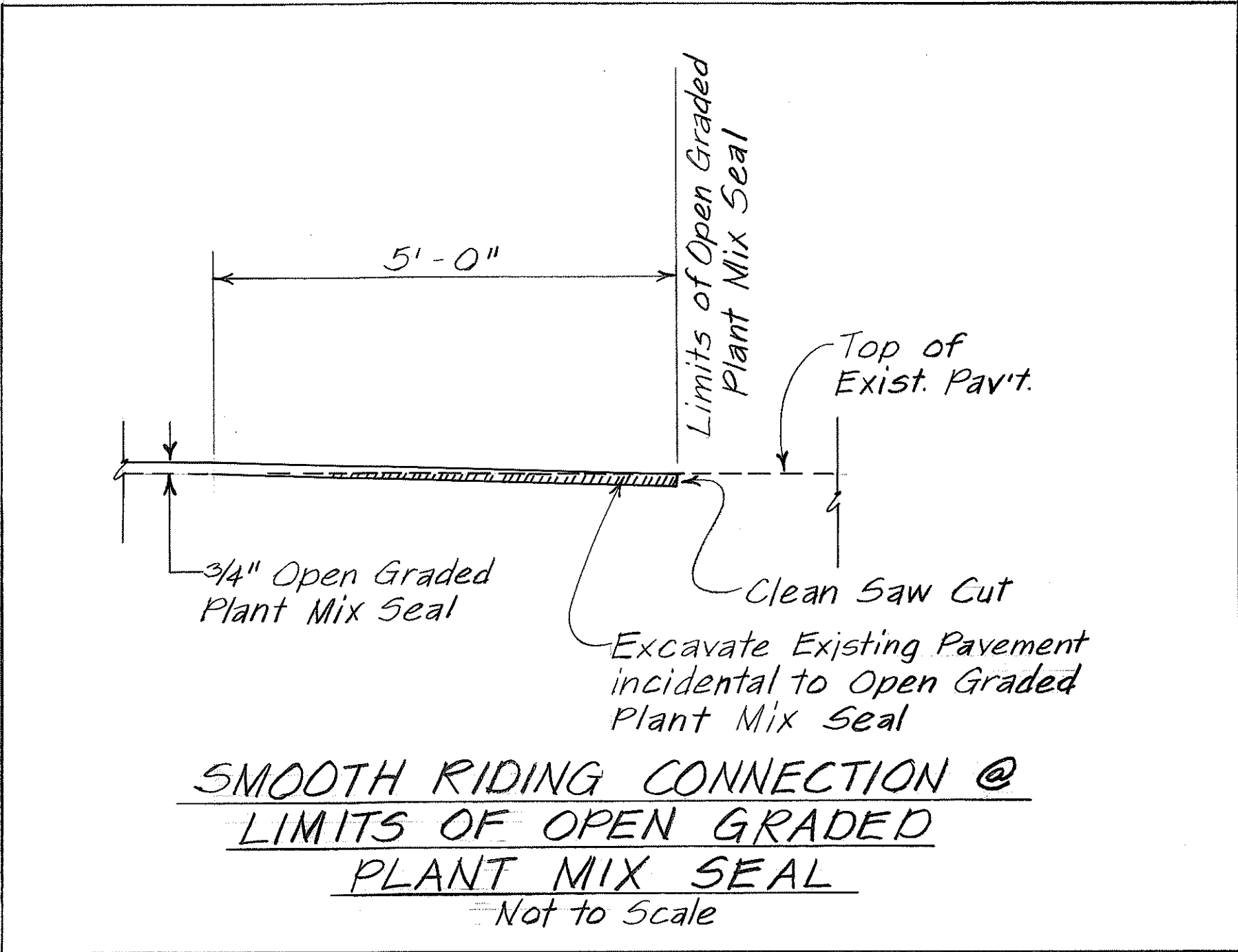
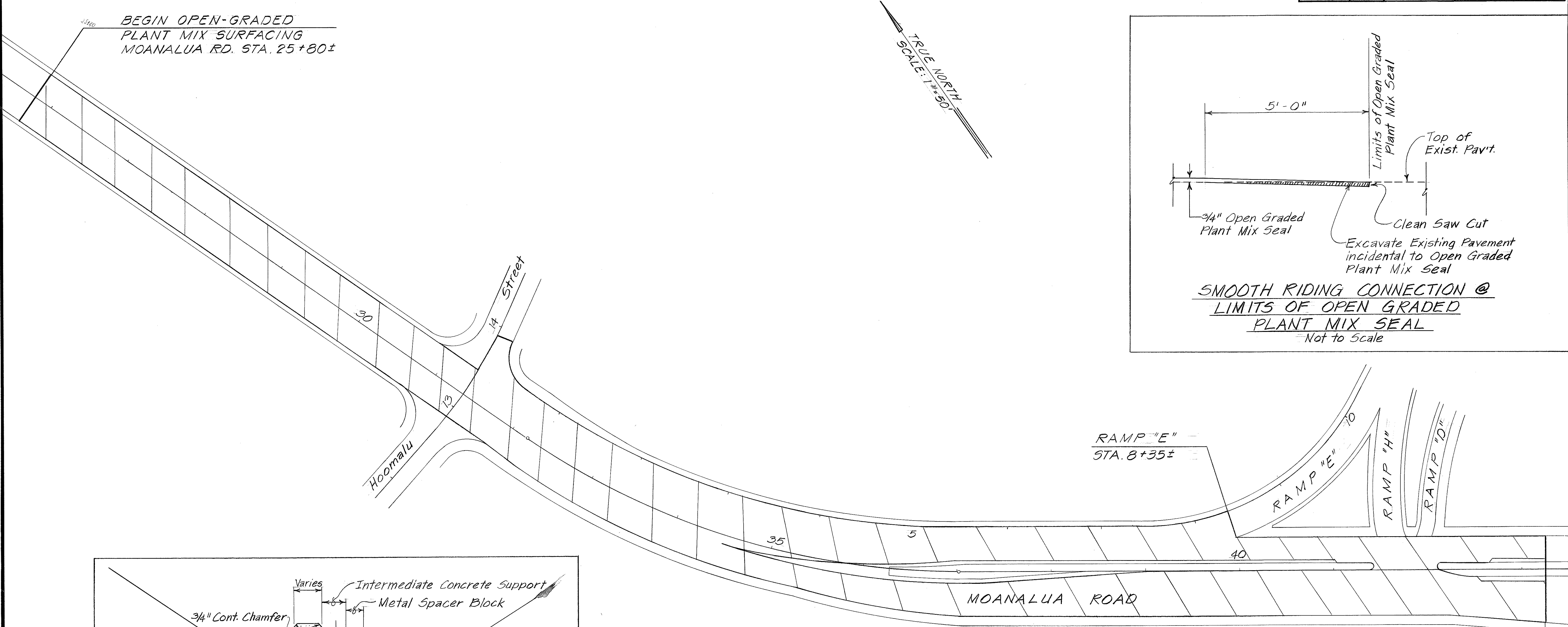


| FED. ROAD DIST. NO. | STATE | FED. AID PROJ. NO. | FISCAL YEAR | SHEET NO. | TOTAL SHEETS |
|---------------------|-------|--------------------|-------------|-----------|--------------|
| HAWAII | HAW. | I-IR-HI-1(165):10 | 1983 | 11 | 64 |



LEGEND

Denotes Limits of Open-Graded Plant Mix Surfacing

STATE OF HAWAII
DEPARTMENT OF TRANSPORTATION
LAND TRANSPORTATION FACILITIES DIVISION

OPEN-GRADED PLANT MIX SEAL PLAN
Interstate Route H-1
Pearl City Off-Ramp Improvements
F.A.I. Proj. No. I-IR-HI-1(165):10
Scale: As Noted
Feb, 1983

SHEET NO. 11 OF 64 SHEETS

| | |
|-------------------|------|
| SURVEY PLOTTED BY | DATE |
| DRAWN BY | |
| DESIGNED BY | |
| CHECKED BY | |
| ORIGINAL PLAN | |
| NOTE BOOK | |
| No. | |