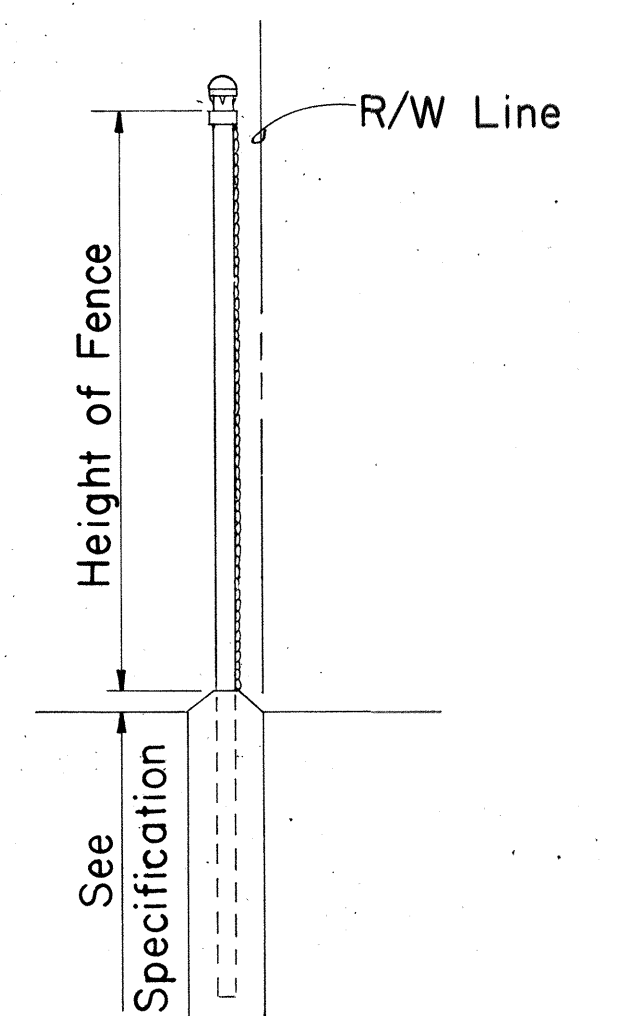
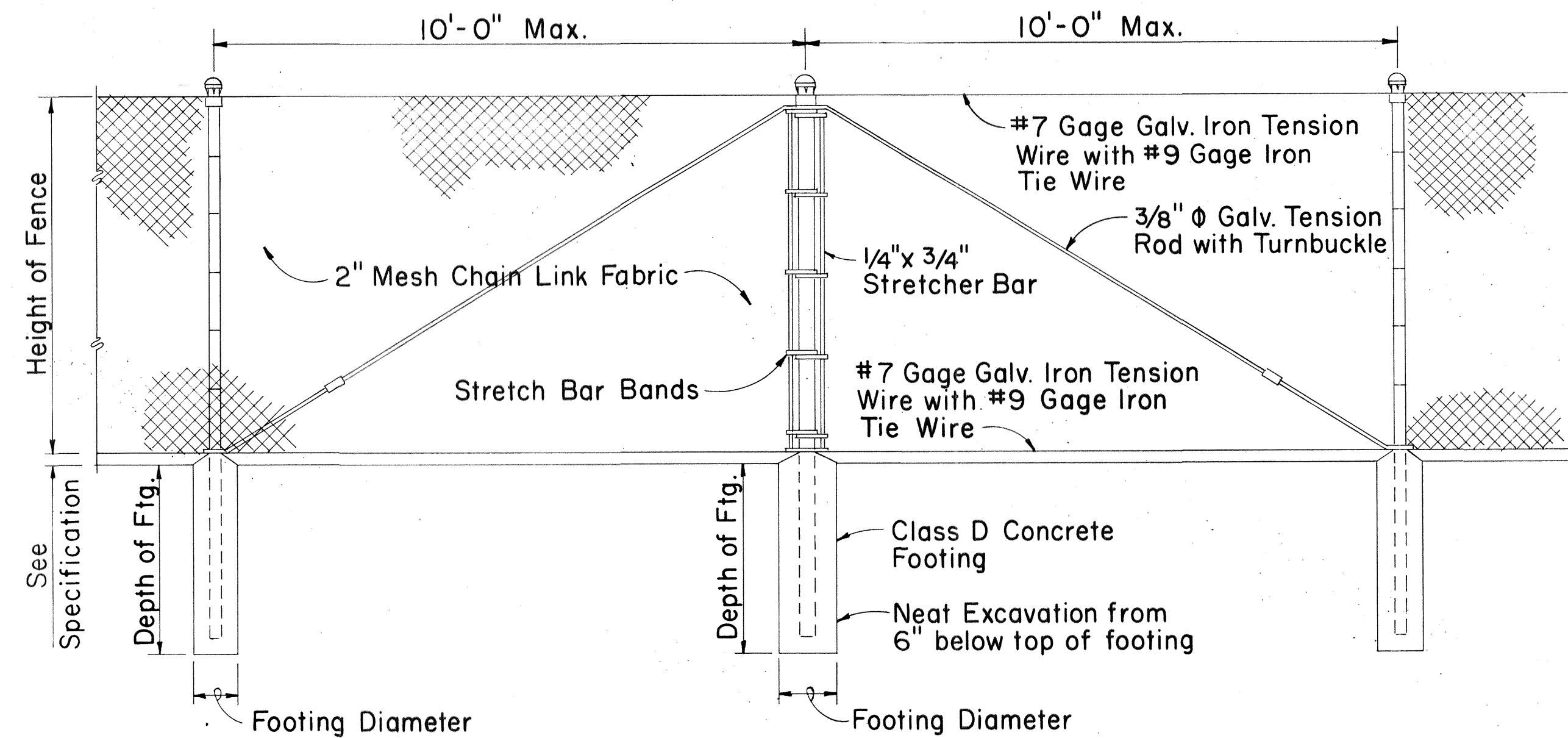
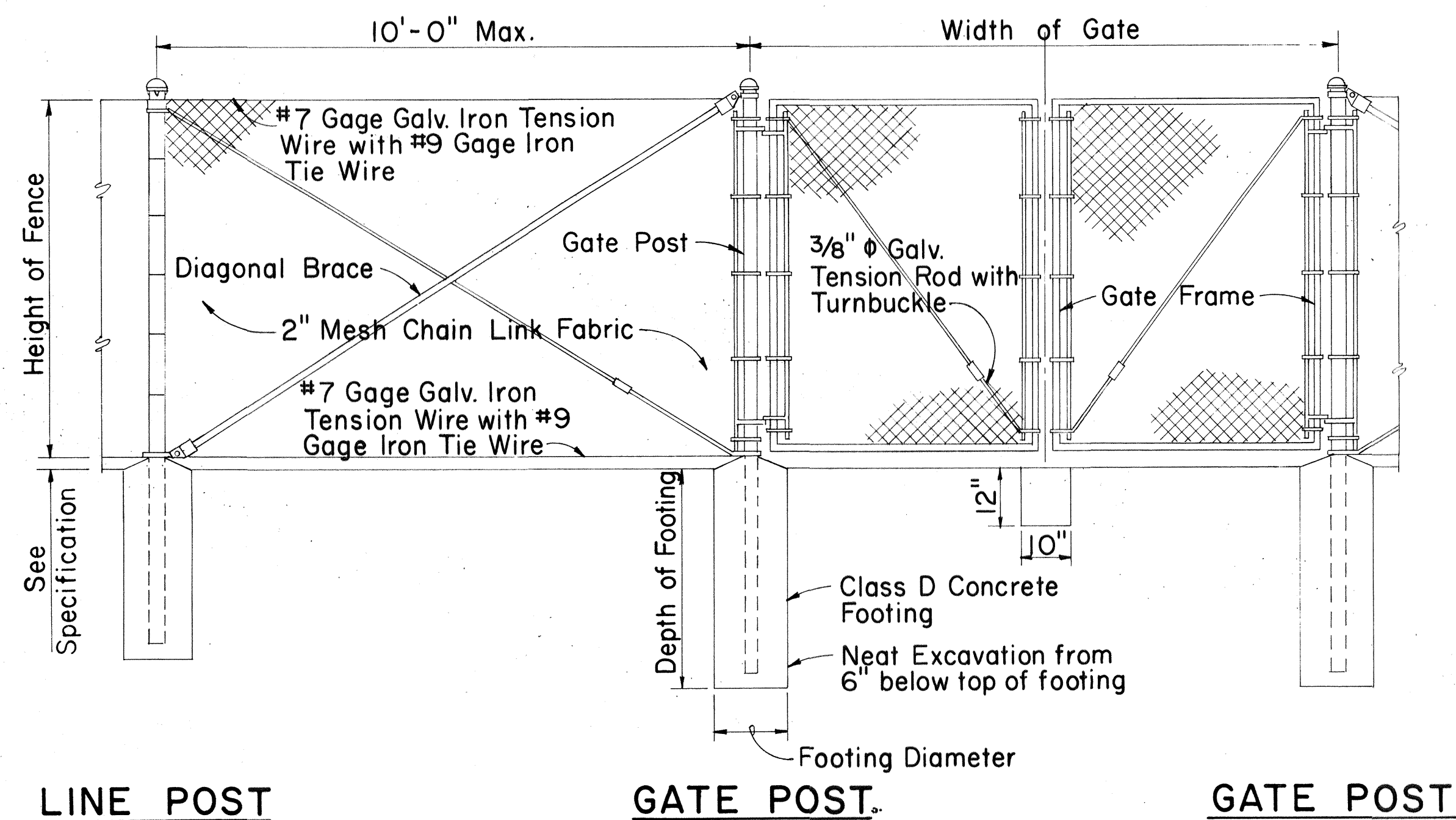
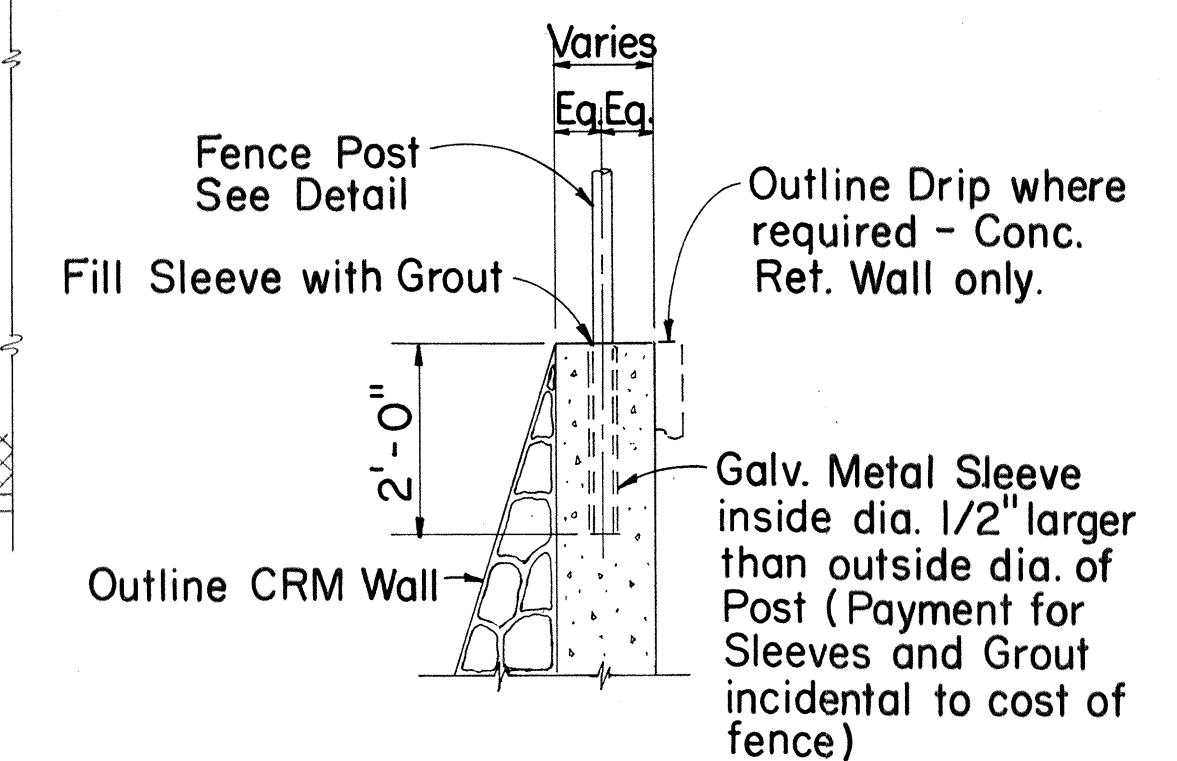
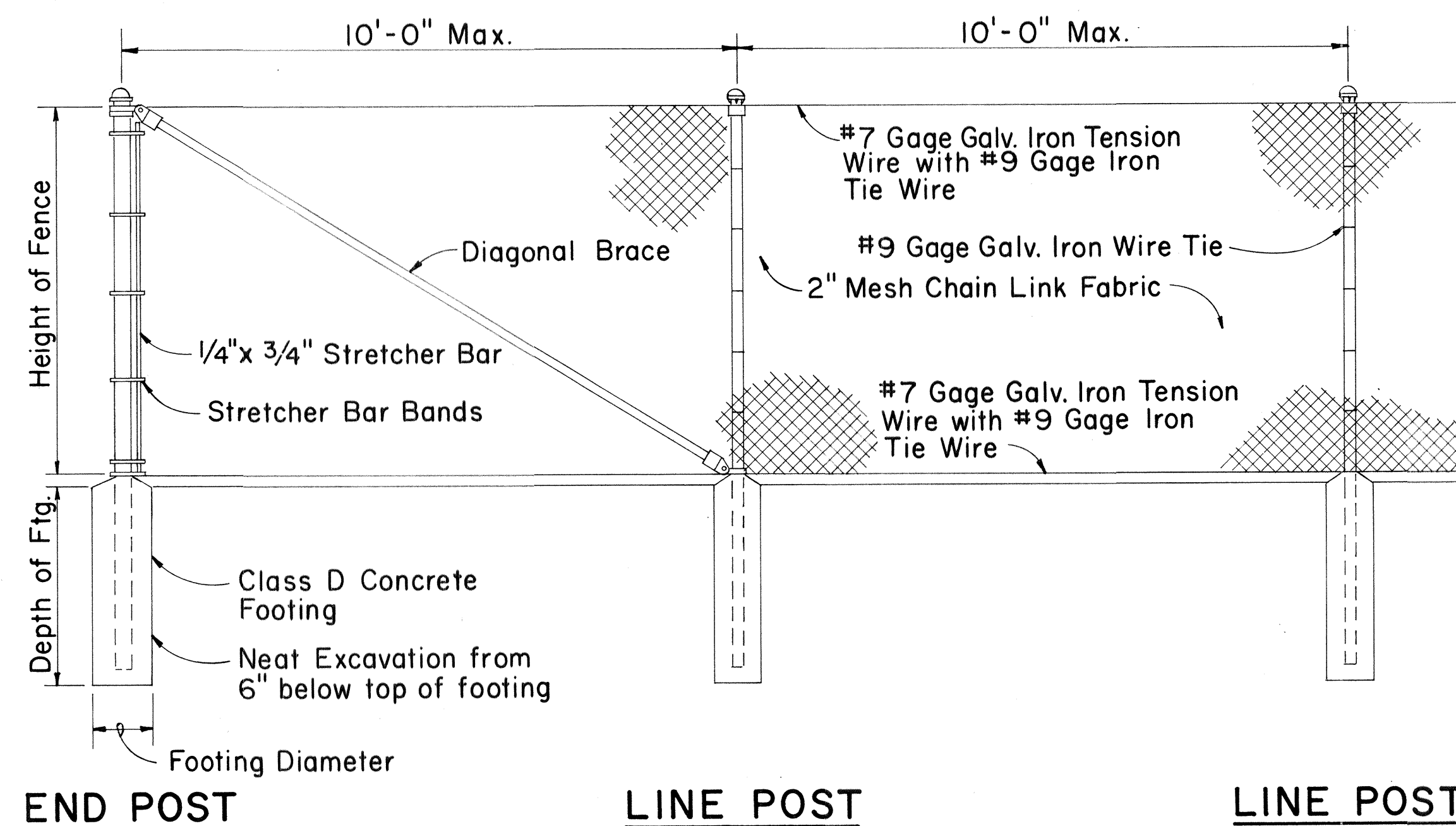
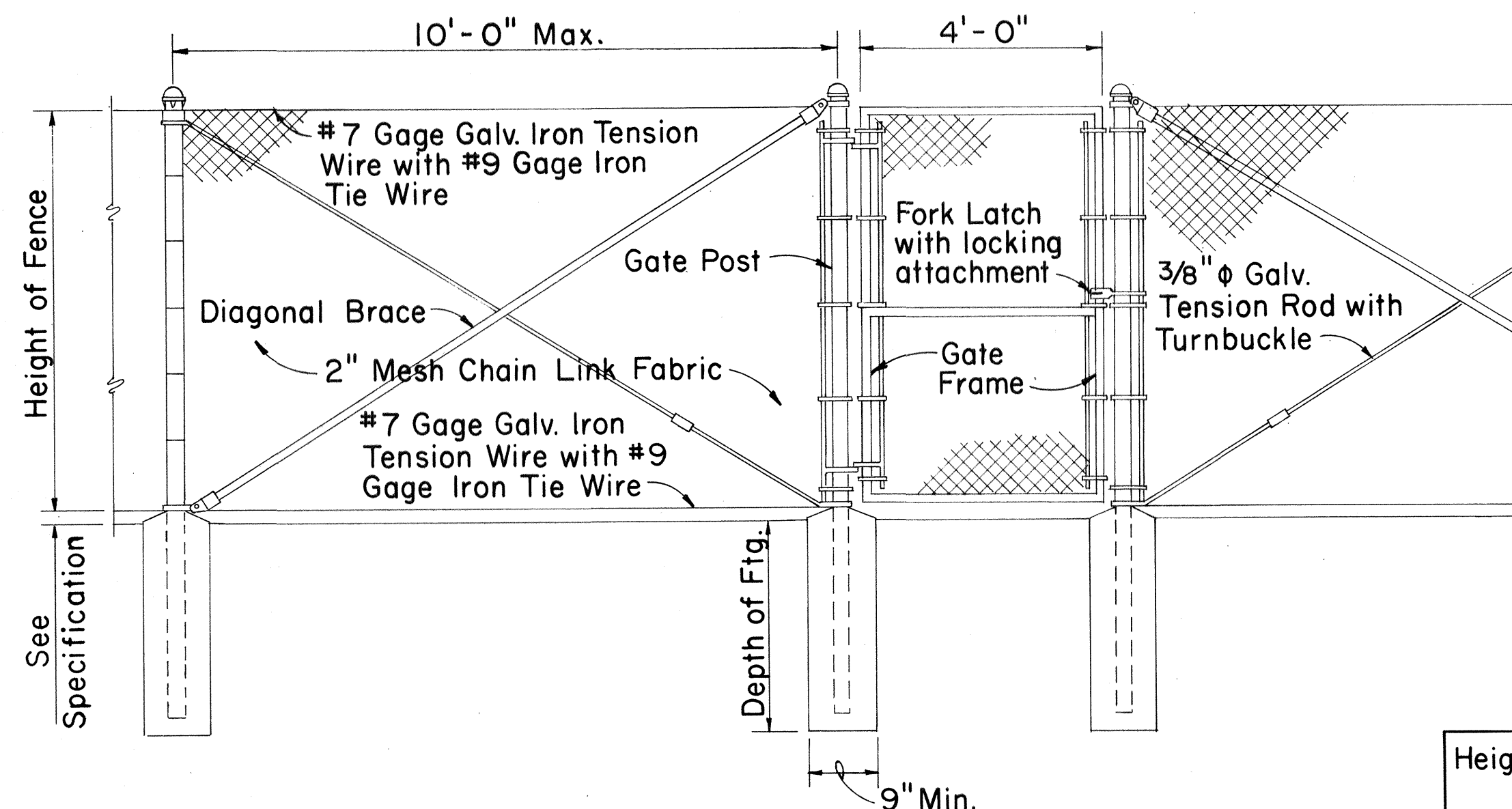


FED. ROAD DIST. NO.	STATE	FED. AID PROJ. NO.	FISCAL YEAR	SHEET NO.	TOTAL SHEETS
HAWAII	HAW.	I-HI-11174	1982	75-1	70



DETAIL OF CHAIN LINK GATE

- NOTE: 1. Gate fork latch and lock, flush plate and anchor, and plunger shall be installed with Gates, and shall be considered as incidental to Chain Link Fence Gate.
2. Gate frames shall be mitered and welded at corners.
3. Fence detail not shown shall be in accordance with the Standard Specifications.





CHAIN LINK FENCE DETAILS

Height of Fence	Minimum Depth of Footing		Minimum Footing Diameter	
	Line Post	Corner, Pull, End and Gate Posts	Line Post	Corner, Pull and End Posts
3'	2'-0"	2'-6"	8"	8"
4'	2'-6"	2'-6"	8"	8"
5'	3'-0"	3'-0"	8"	8"
6'	3'-0"	3'-0"	8"	9"

Added Contract Change Order No. 6.

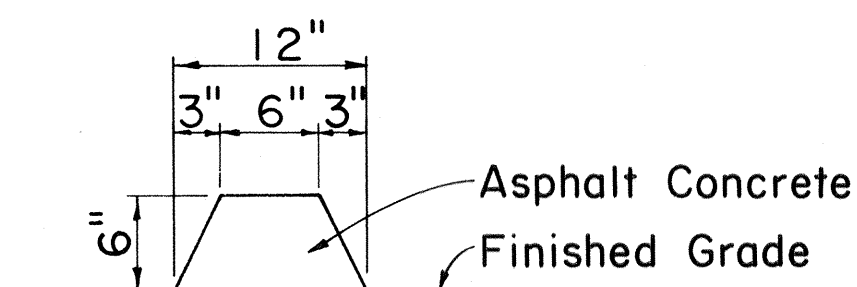
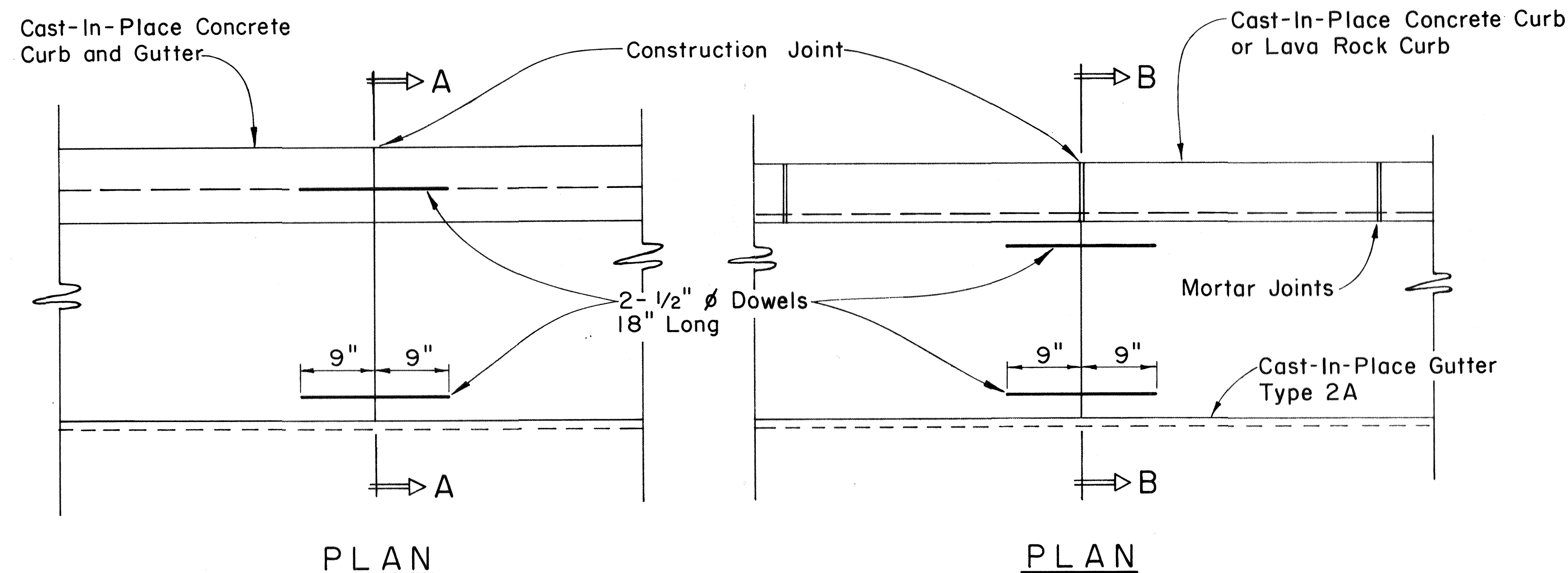
NO.	REVISION	APPROVED BY	DATE

APPROVAL RECOMMENDED:

HIGHWAY DESIGN ENGINEER
12-4-69
DATE

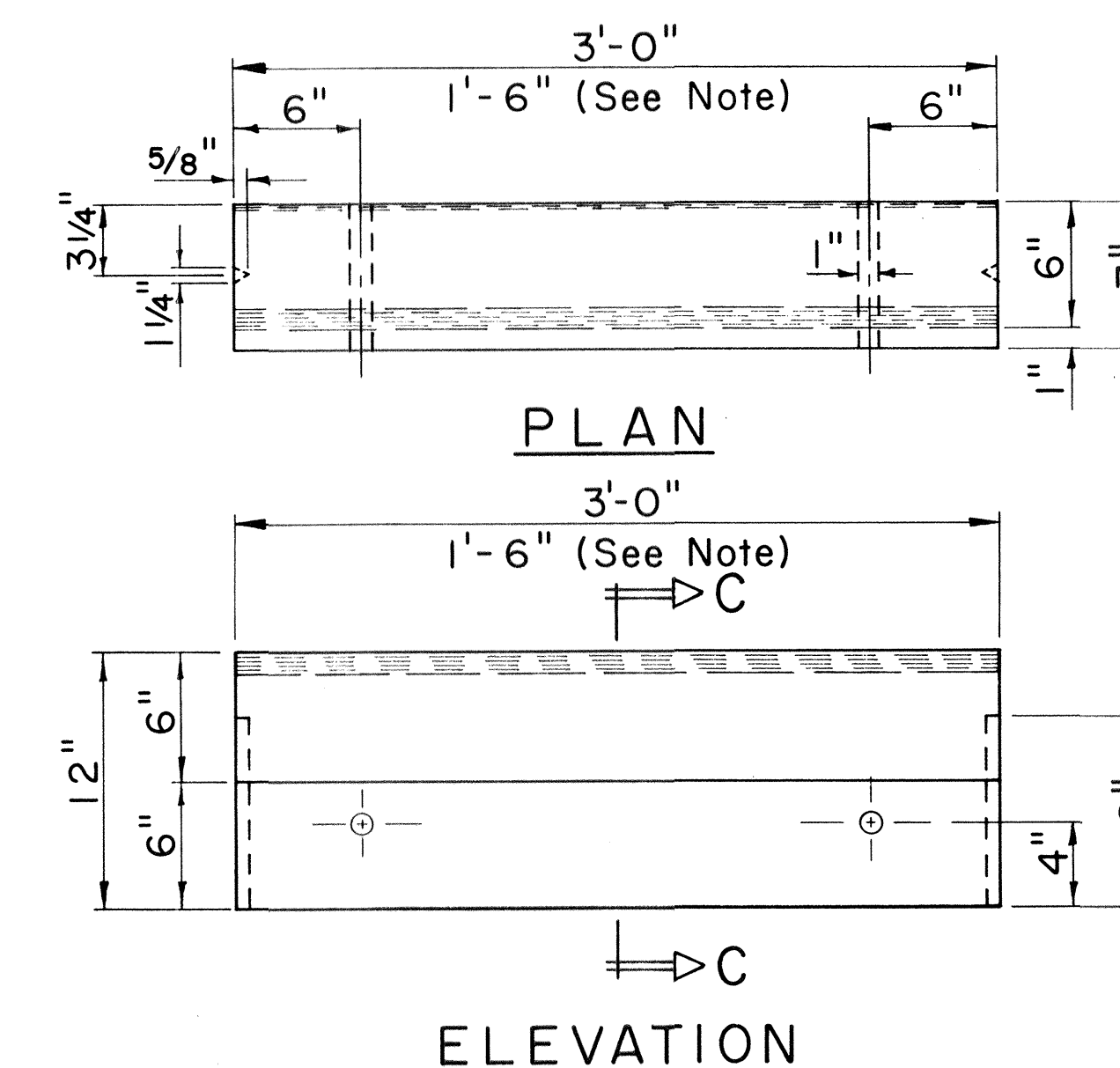
APPROVED:

ASSISTANT CHIEF, ENGINEERING
12-10-69
DATE

STATE OF HAWAII DEPARTMENT OF TRANSPORTATION HIGHWAYS DIVISION			
STANDARD DETAILS			
CHAIN LINK FENCE (WITHOUT TOPRAIL)			
Scale: 1/2" = 1'-0"		Date:	
SHEET No. OF SHEETS		DD 607.2	

FED. ROAD DIST. NO.	STATE	FED. AID PROJ. NO.	FISCAL YEAR	SHEET NO.	TOTAL SHEETS
HAWAII	HAW.	I-H-1(174)16	1982	8	70



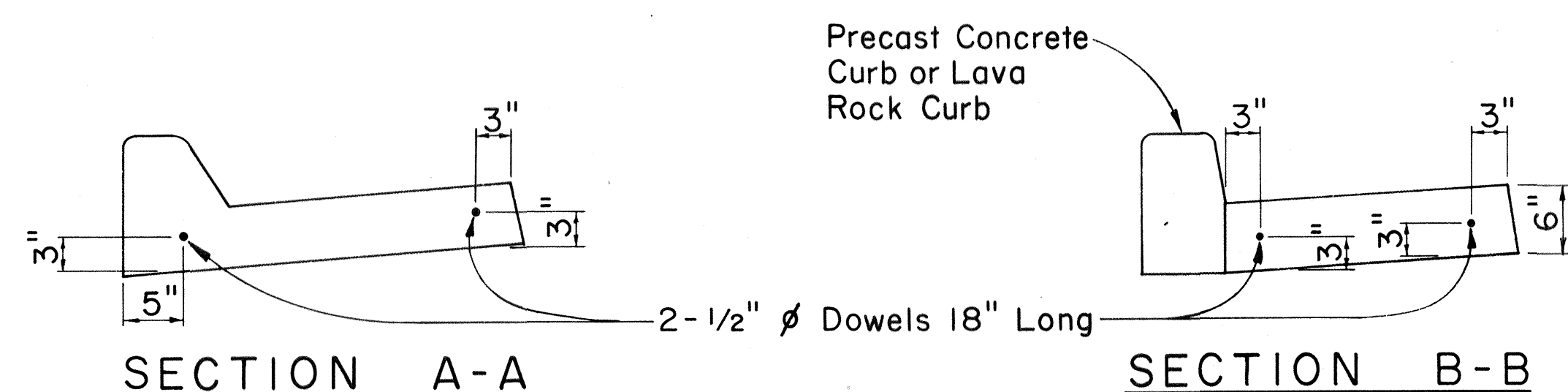
CURB, TYPE 6
BITUMINOUS CURB



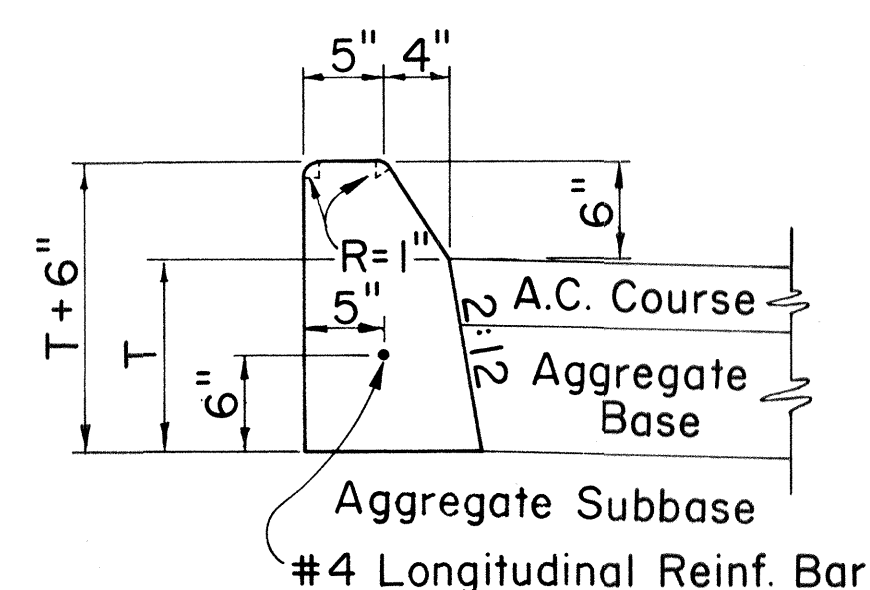
ELEVATION

The diagram shows a cross-section of a curb and gutter. The total width of the curb top is 7 inches. This is divided into a 6-inch wide flat section and a 1-inch wide sloped section. The vertical height of the curb face is 9 inches. A radius of $R = \frac{1}{4}$ " is indicated at the bottom-left corner of the curb face. Another radius of $R = 1"$ is shown where the curb meets the gutter. The gutter has a depth of 4 inches. The total width of the gutter opening is 6 inches. The distance from the centerline of the gutter to the outer edge of the curb is 3 1/4 inches. A label "Curb Grade" points to the sloped surface of the curb.

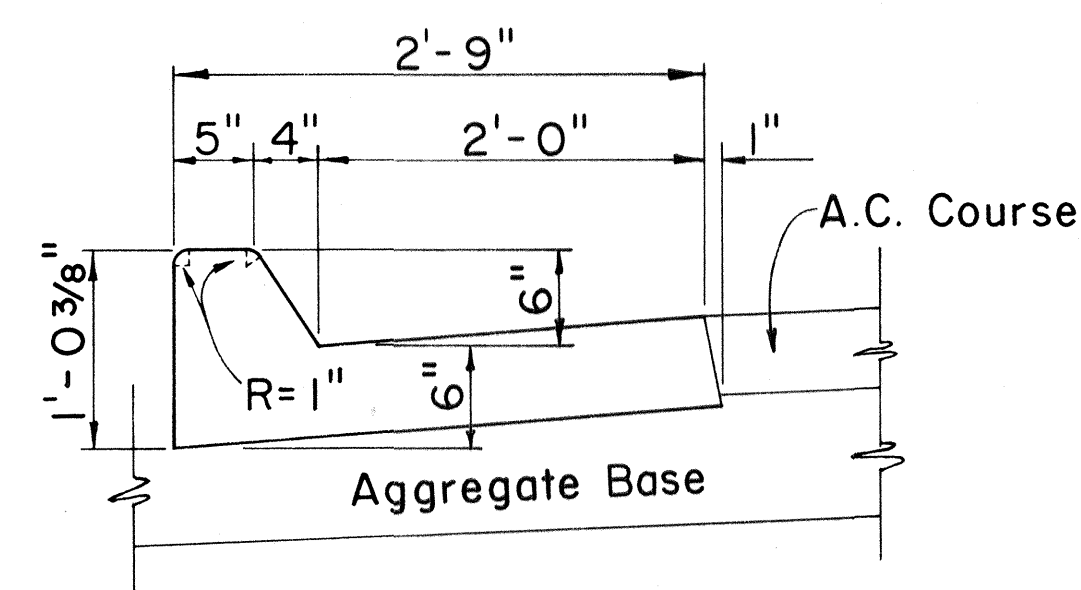
NOTE:
For curb
1'-6" p
crete cu



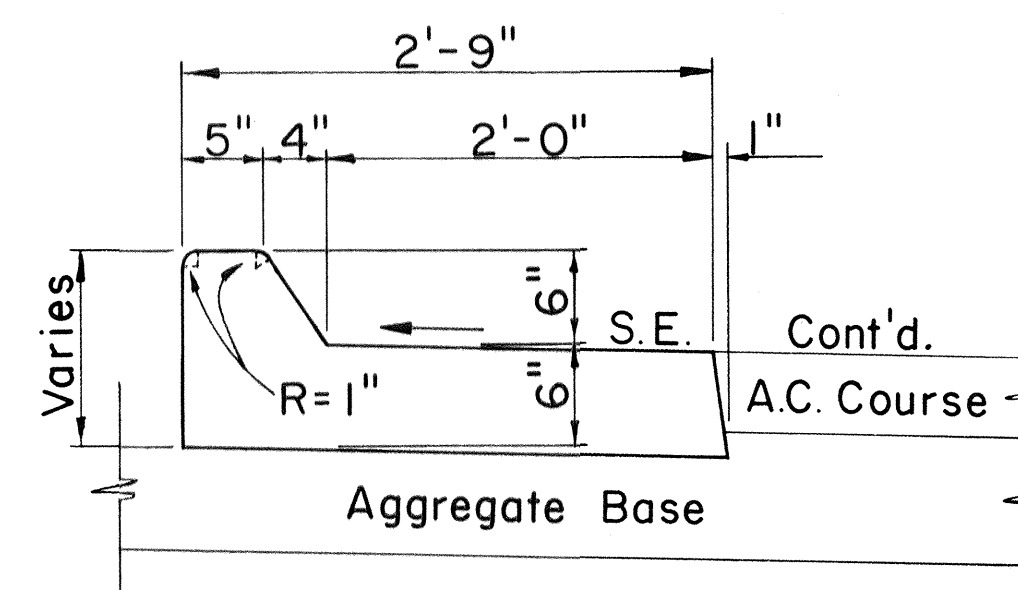
CAST-IN-PLACE CURB & GUTTER CAST-IN-PLACE GUTTER
CONSTRUCTION JOINT DETAIL



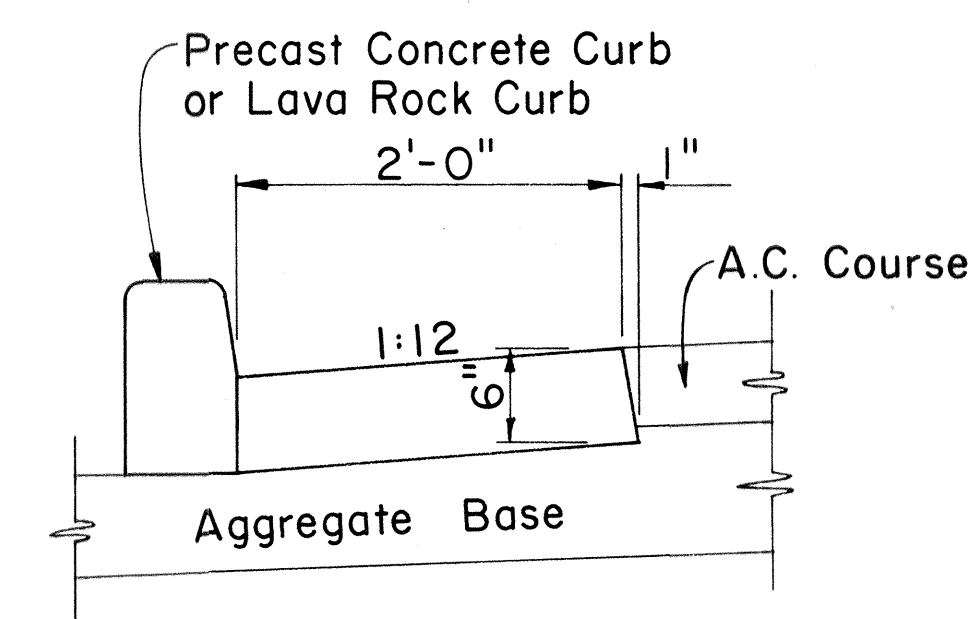
CURB, TYPE 2A



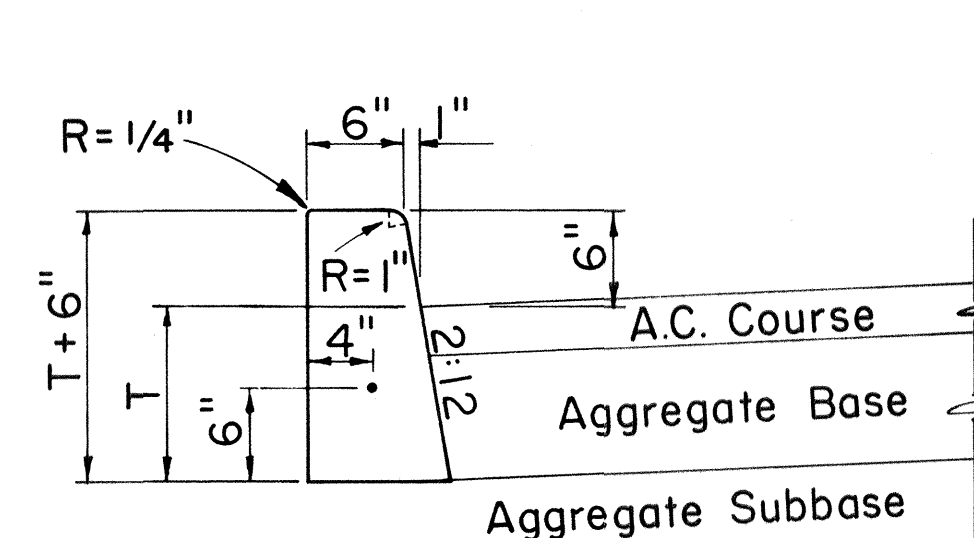
CURB & GUTTER, TYPE 2AG



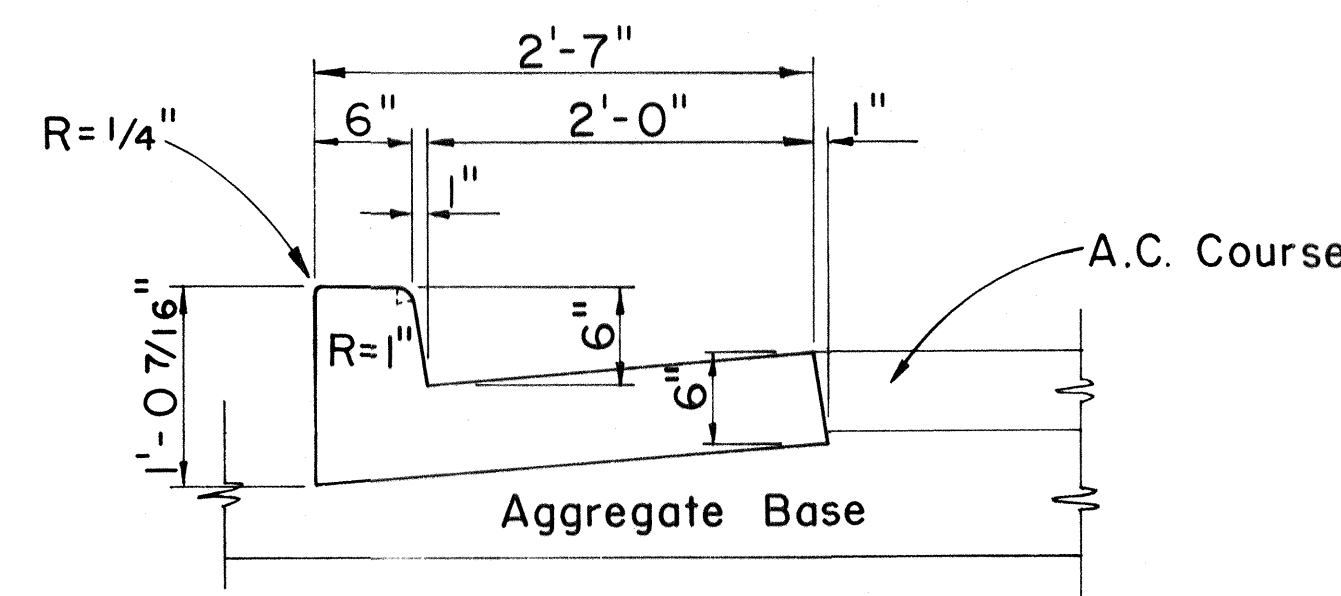
CURB & GUTTER, TYPE 2AGM



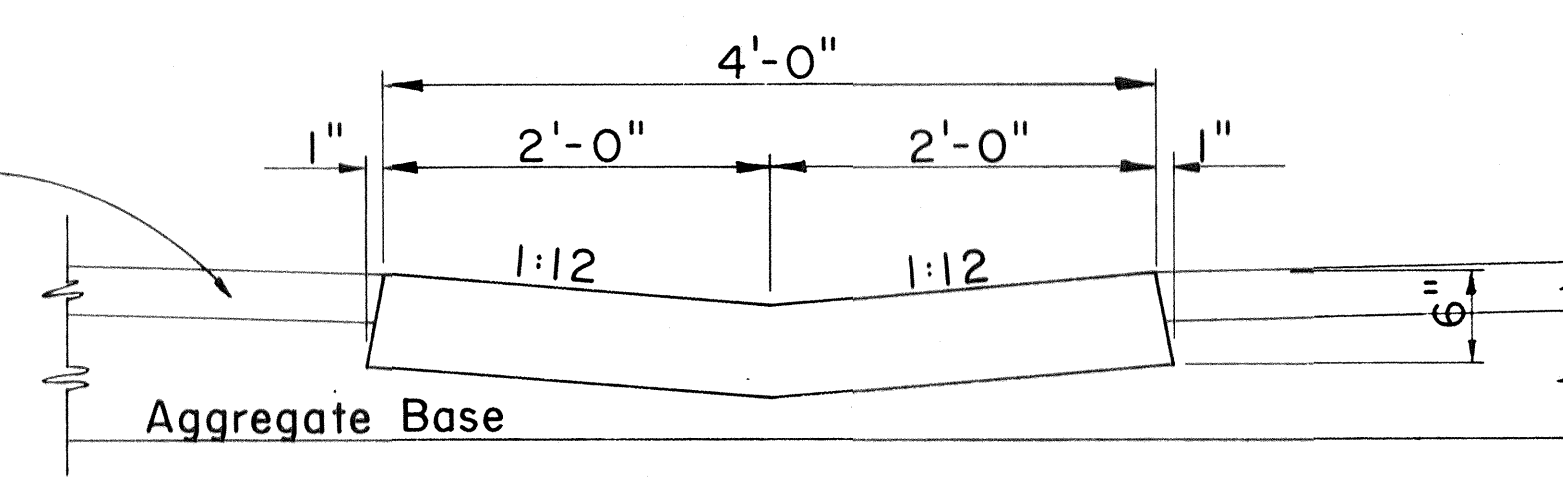
GUTTER, TYPE 2A



CURB, TYPE 2D



CURB & GUTTER, TYPE 2DG



GUTTER, TYPE 2G

CAST-IN-PLACE CONCRETE CURBS AND/OR GUTTERS

Scale: 1" = 1'-0"

NO.	REVISION	APPROVED BY	DATE

APPROVAL RECOMMENDED: M. J. [Signature] 12-4-61
HIGHWAY DESIGN ENGINEER DATE

APPROVED: [Signature] 12-10-61
ASSISTANT CHIEF, ENGINEERING DATE

STATE OF HAWAII
DEPARTMENT OF TRANSPORTATION
HIGHWAYS DIVISION
STANDARD DETAILS
TYPICAL DETAILS OF CURB
AND/OR GUTTERS

Scale: As Shown

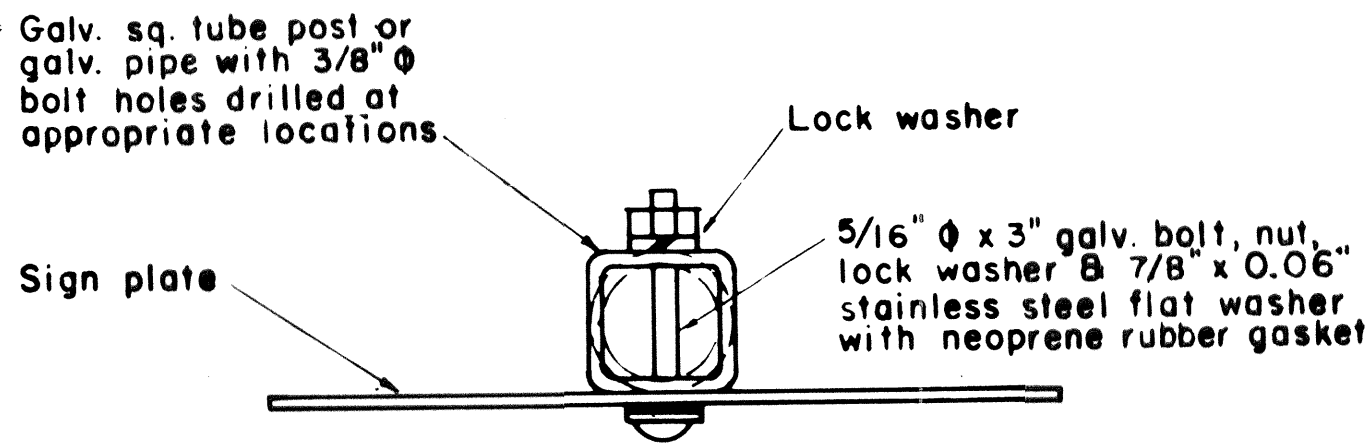
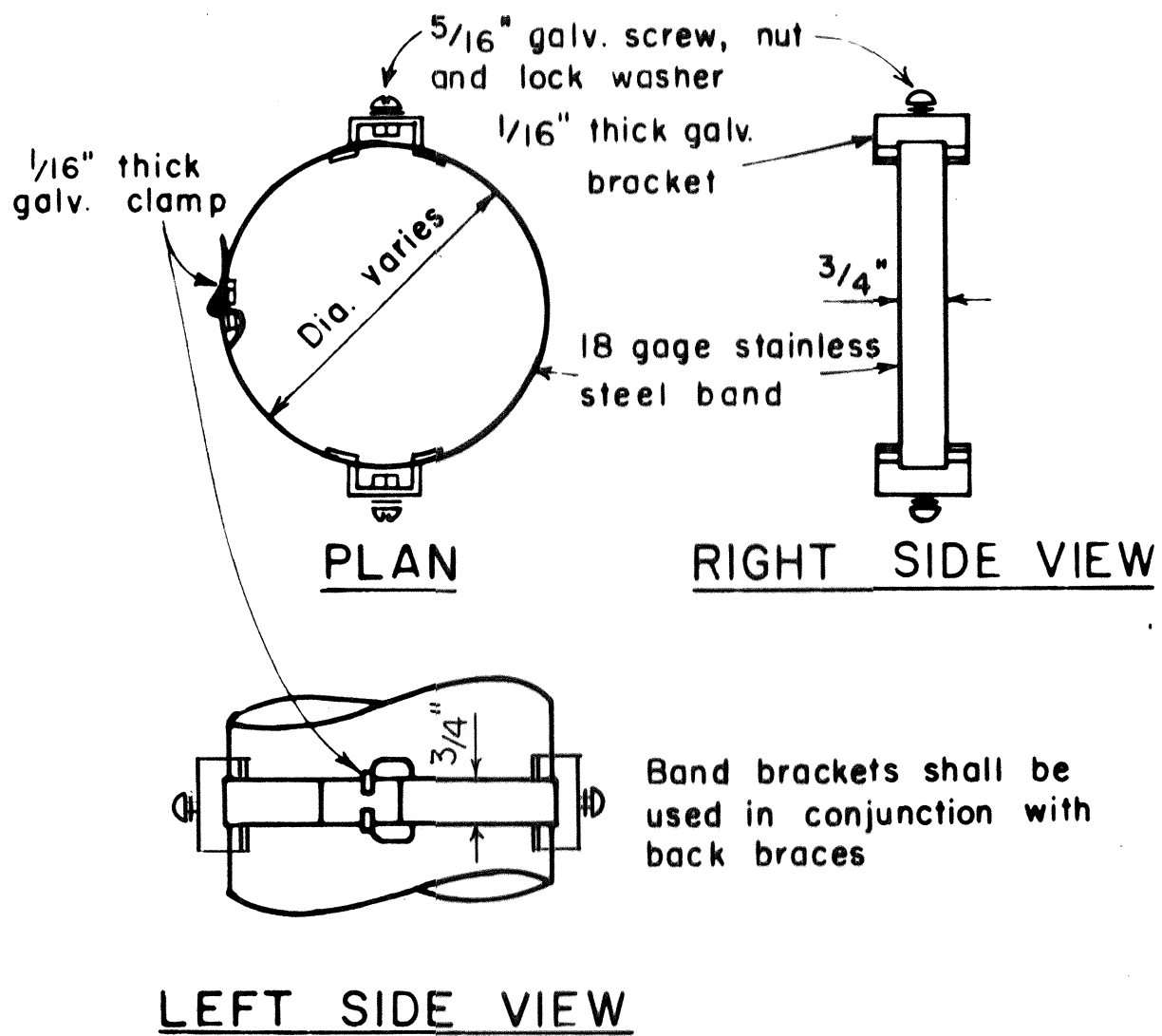
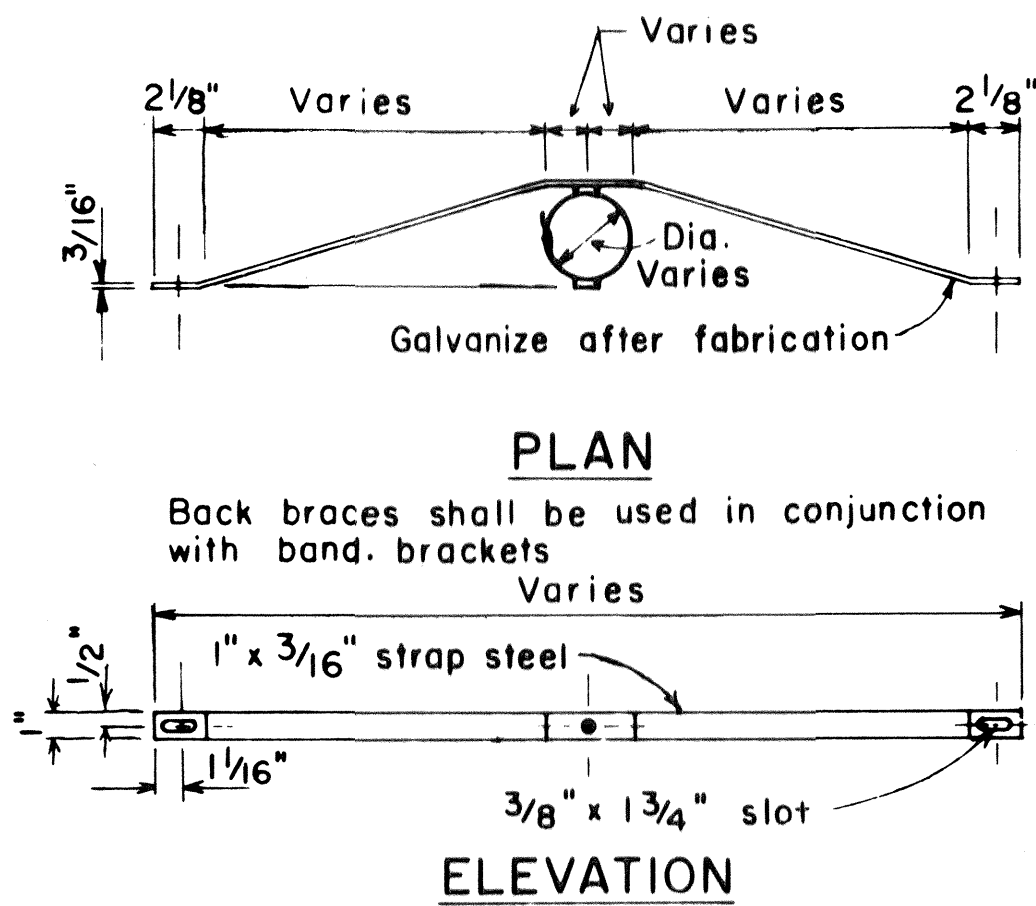
SHEET No. /	OF 4 SHEETS	DD 609.1
-------------	-------------	----------

FED. ROAD DIST. NO.	STATE	FED. AID PROJ. NO.	FISCAL YEAR	SHEET NO.	TOTAL SHEETS
HAWAII	HAW.	HI-1(74)10	1980	9	70

GENERAL NOTES

- Signs shall be placed in conformance with positions shown and described in the "Manual on Uniform Traffic Control Devices for Streets and Highways", 1978, Part II, Section 2A-21, as amended, and as supplemented herein.
- Signs 48" and wider or larger than 10 sq. ft. in area shall be mounted on two sign posts except as noted below.
- Signs 48" and wider or larger than 10 sq. ft. in area may be mounted on other than two sign posts (i.e. on highway lighting poles)
 - Signs larger than 10 sq. ft. and less than 28 sq. ft. in area shall be mounted with a minimum of two sets of band brackets and back braces.
 - Signs larger than 28 sq. ft. in area shall be mounted with a minimum of three sets of band brackets and back braces.
- All parking restriction signs with arrows shall be mounted 45° to the line of traffic flow.
- Sign posts shall extend 3 1/2" above each sign, where required, for attachment of City and County street name signs.
- (R) or (L) indicates right or left and shall be shown on the plans.
- See plans for special details.
- The minimum lateral distances shown are guidelines and shall be exceeded whenever possible. The Contractor shall place signs at the maximum practical lateral distance from the edge of the traveled way up to 30 feet and shall utilize protected locations whenever possible. Final locations of all signs shall be approved by the Engineer.
- Signs in medians shall be placed at midpoint of median up to a maximum distance of 30 feet from the edge of traveled way. When appropriate, signs for opposing directions shall be placed back to back.

BACK BRACE DETAILS
FOR BALANCED SIGN INSTALLATION



GALVANIZED SQUARE TUBE POST
(OR GALVANIZED PIPE)

BAND BRACKET

TYPICAL MOUNTING DETAILS

NOT TO SCALE

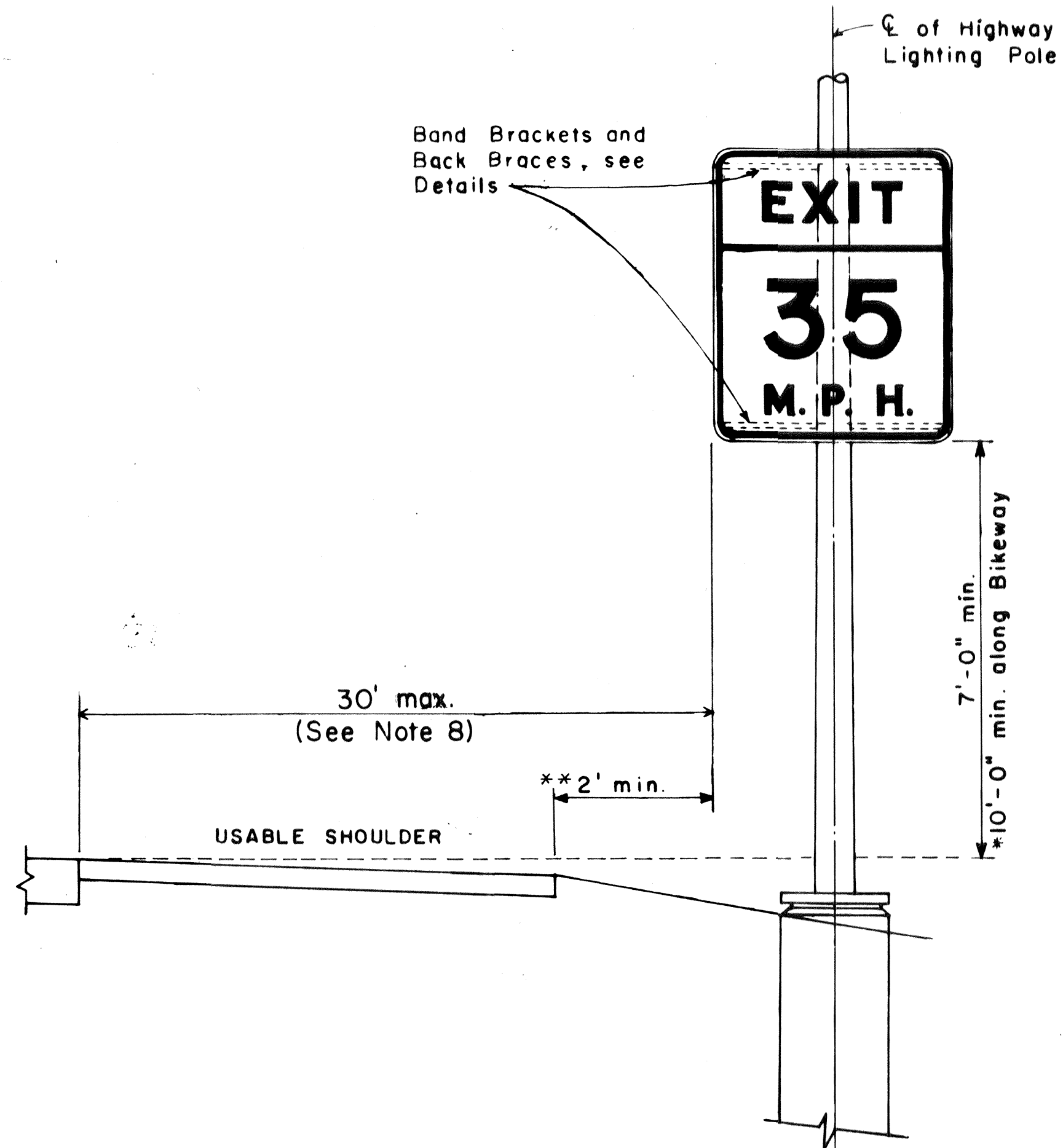
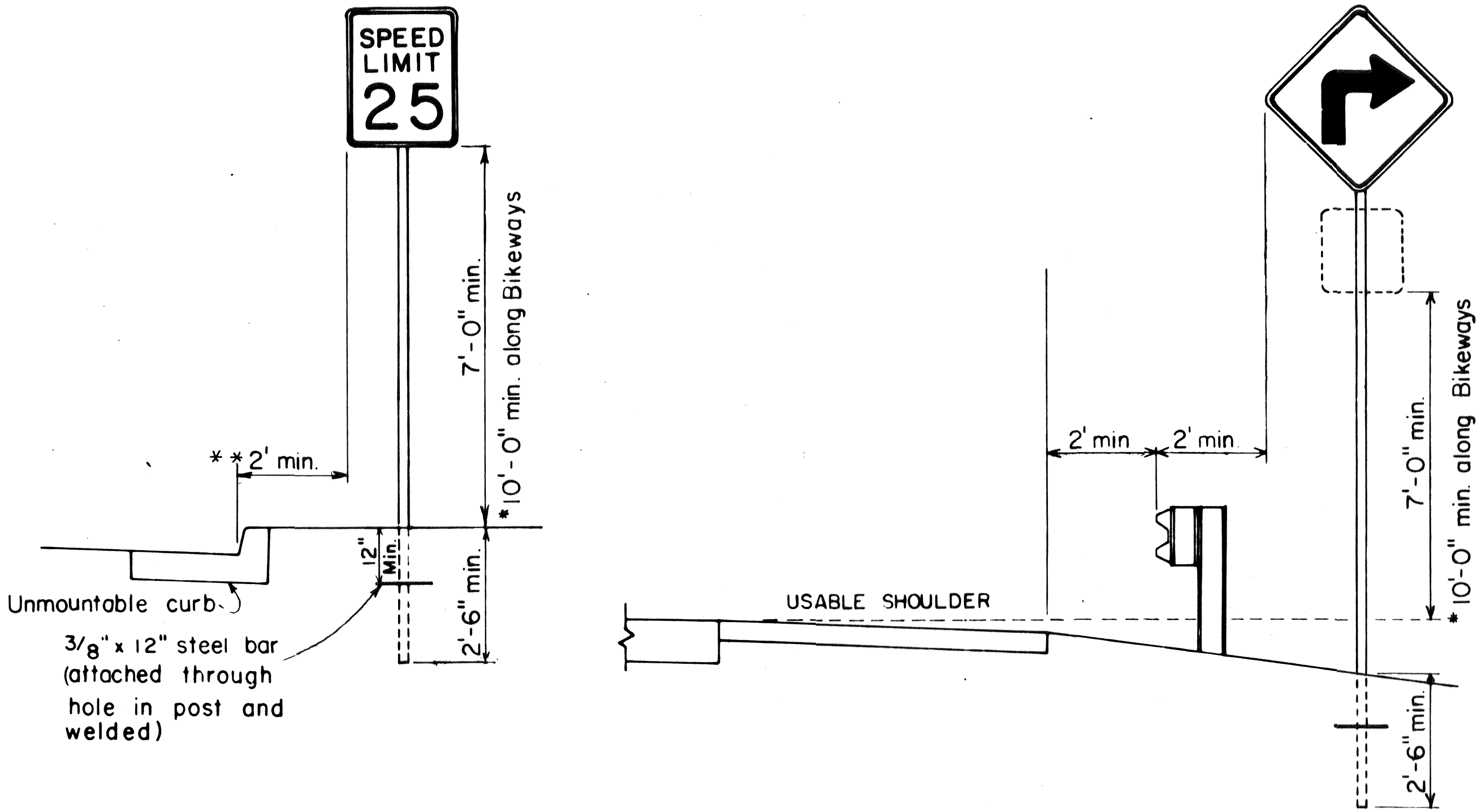
NO.	REVISION	APPROVED BY	DATE
1	Supersedes Sht. DT-100 approved 12/30/69	H.T.	11/15/77
2	Revised depth of signpost	H.T.	5/8/79
3	Added Notes No. 8 & No. 9	H.T.	5/15/79
4	Revised Gen. Note #4 & Mounting Details	H.T.	4/23/80
5	Revised General Notes, Lateral Sign Locations and Mounting Details	H.T.	5/15/81

APPROVAL RECOMMENDED:
Eishi Tanaka 11/10/77
TRAFFIC ENGINEER DATE

APPROVED:
Harbert S. Nakai 11/15/77
ASSISTANT CHIEF, ENGINEERING DATE











STATE OF HAWAII DEPARTMENT OF TRANSPORTATION HIGHWAYS DIVISION
STANDARD DETAILS
MISCELLANEOUS SIGN DETAILS

Not to scale June, 1977
SHEET NO. 2 OF 4 SHEETS DT 100



HEIGHT AND LATERAL LOCATION OF SIGNS
TYPICAL INSTALLATION

DATE	11/15/77
DESIGNED BY	H.T.
CHECKED BY	H.T.
NOTED BY	H.T.
QUANTITIES BY	H.T.
ORIGINAL PLAN	H.T.

									
WI-1(R) 30"x 30" WI-1(R)-A 48"x 48"	WI-2(R) 30"x 30" WI-2(R)-A 48"x 48"	WI-3(R) 30"x 30" WI-3(R)-A 48"x 48"	WI-4(R) 30"x 30" WI-4(R)-A 48"x 48"	WI-5(R) 30"x 30" WI-5(R)-A 48"x 48"	WI-6 48"x 24"	WI-7 48"x 24"	W2-1 30"x 30" W2-1-A 48"x 48"	W2-2 30"x 30" W2-2-A 48"x 48"	W2-3(R) 30"x 30" W2-3(R)-A 48"x 48"

W3-3	36" x 36" 24" x 18"	W4-1(R)	30" x 30" 24" x 18"
		W4-1(R)-A	48" x 48" 24" x 18"

Diagram illustrating three types of traffic signs and their dimensions:

- Rectangular Sign:** Labeled "USE LOW GEAR". Dimensions: 24" x 18". Part number: W7-2.
- Diamond Sign:** Labeled "BUMP". Dimensions: 30" x 30". Part number: W8-1. Alternative dimensions: 36" x 36". Part number: W8-1-A.
- Diamond Sign:** Labeled "DIP". Dimensions: 30" x 30". Part number: W8-2. Alternative dimensions: 36" x 36". Part number: W8-2-A.

GENERAL NOTES

- 24 x 18
1. Sign details shall conform to the FHWA publications "Manual on Uniform Traffic Control Devices for Streets and Highways," 1971, and "Standard Highway Signs," 1972, and as amended.
 2. All warning signs shall be reflectorized unless otherwise specified.
 3. All warning signs shall have 3/8" bolt holes drilled at appropriate locations.
 4. Numerals in () indicates numerals to be inserted for sign message.
(R) or (L) indicates right or left.
 5. Signs prefixed with "CW" on the plans shall indicate orange and black construction signs, and shall be reflectorized.
- APPROVAL RECOMMENDED:
Emile Tanaka
TRAFFIC ENGINEER
- APPROVED:
Shuler *24/5/80*

APPROVAL RECOMMENDED:
Eishi Tanaka 3/17/12
 TRAFFIC ENGINEER DATE

APPROVED: 2/10/13 2/10/13 3-20-13
ASSISTANT CHIEF, ENGINEERING DATE

STATE OF HAWAII
DEPARTMENT OF TRANSPORTATION
HIGHWAYS DIVISION

STANDARD DETAILS
WARNING SIGNS

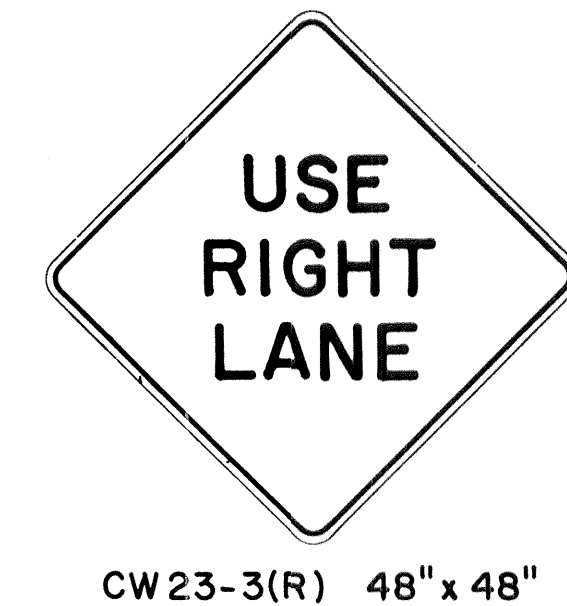
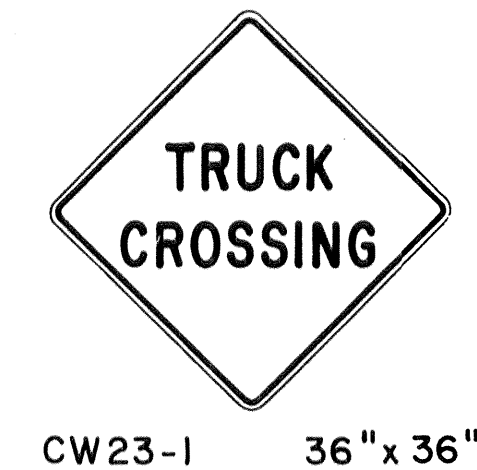
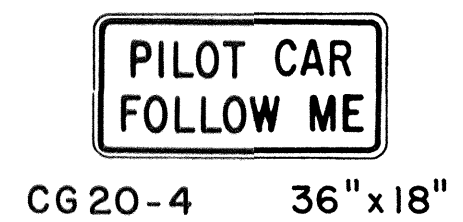
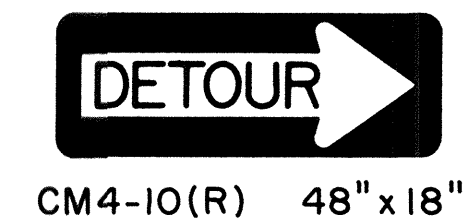
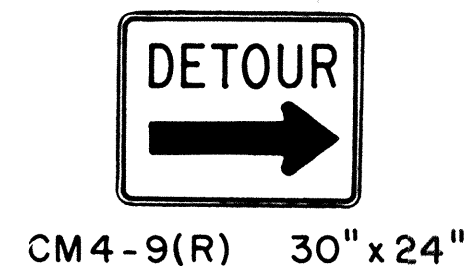
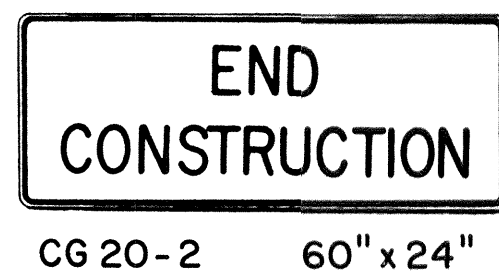
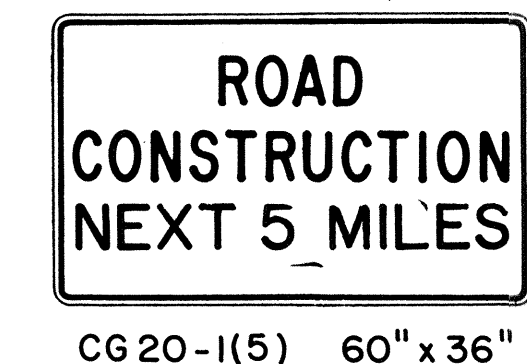
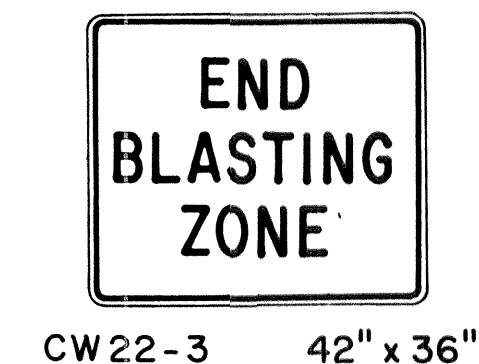
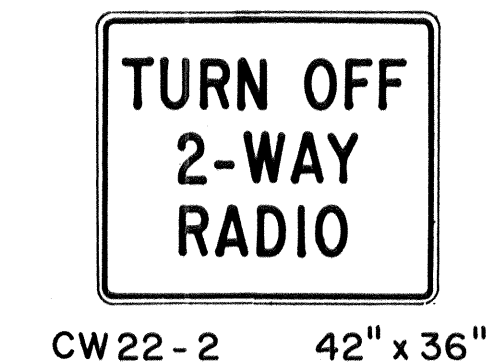
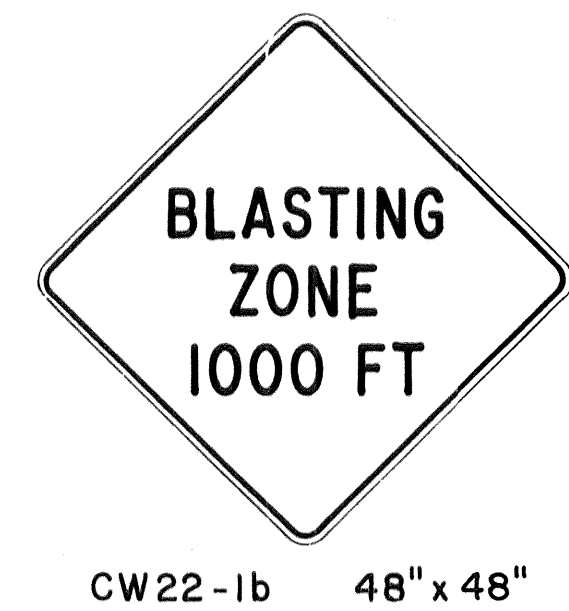
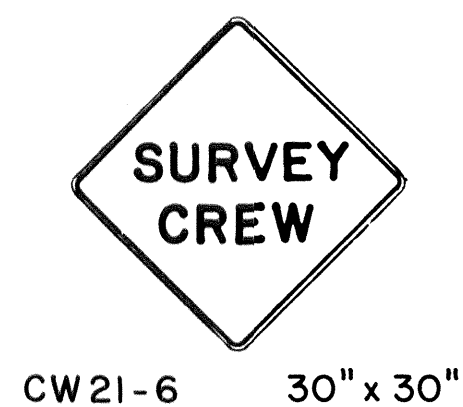
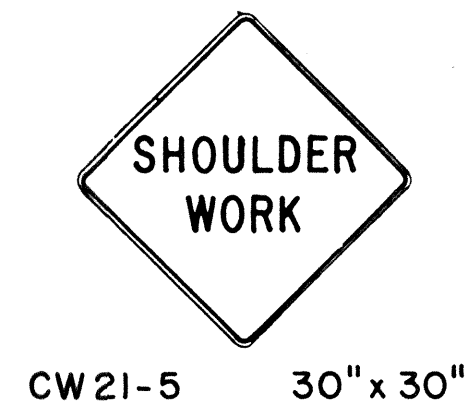
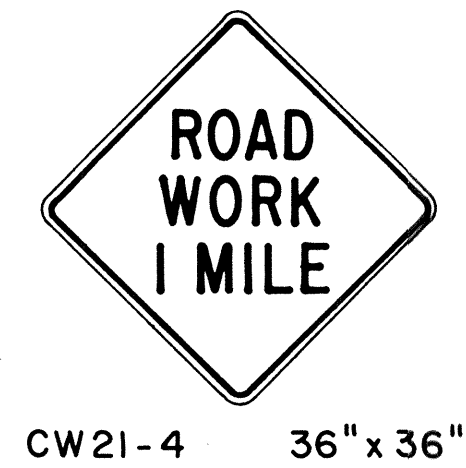
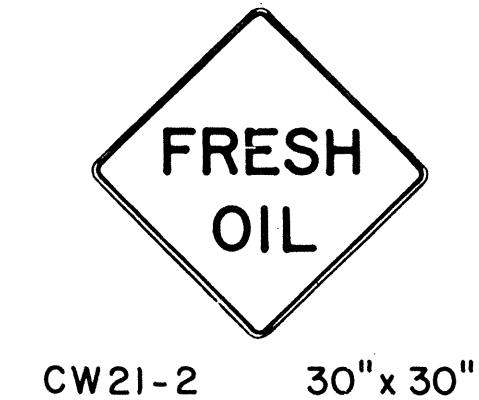
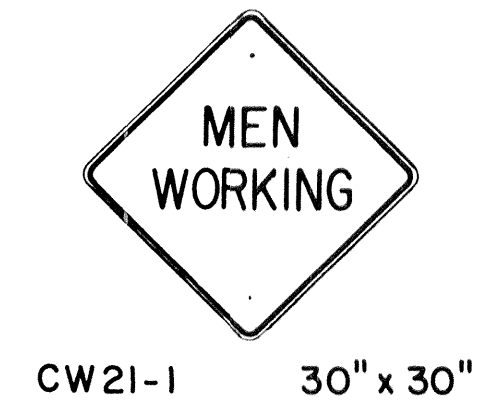
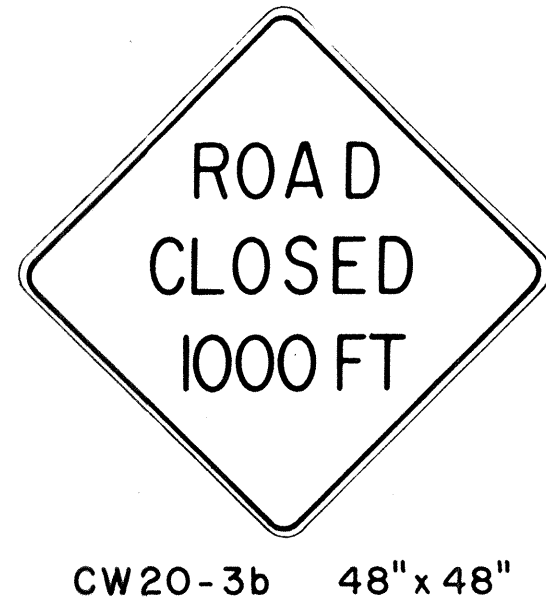
NOT TO SCALE

SHEET No. 3 OF 4 SHEETS DT 10

NOTE

1. All signs shall be erected without educational plaques unless called for in the plans.

FED. ROAD DIST. NO.	STATE	FED. AID PROJ. NO.	FISCAL YEAR	SHEET NO.	TOTAL SHEETS
HAWAII	HAW.	111-1(14)	1982	11	70



GENERAL NOTES

- Sign details shall conform to the FHWA publications "Manual on Uniform Traffic Control Devices for Streets and Highways," 1971, and "Standard Highway Signs," 1972, and as amended.
- All construction signs shall be reflectorized.
- All construction signs shall have 3/8" bolt holes drilled at appropriate locations.
- Numerals in () indicates numerals to be inserted for sign message. (R) or (L) indicates right or left.
- For "CW" series signs, suffixes a,b,c and d are as follows:
a-1500 FT, b-1000 FT,
c-500 FT and d-AHEAD.

NO.	REVISION	APPROVED BY	DATE
1	Supersedes Sht. DT 104 Approved 12-30-69	H.T.	3/23/72
2	Revised General Note 1	H.T.	10/16/74
3	Revised General Note 2	H.T.	9-16-75
4	Revised General Note 2 and sign CG20-1(5)	H.T.	9-14-76

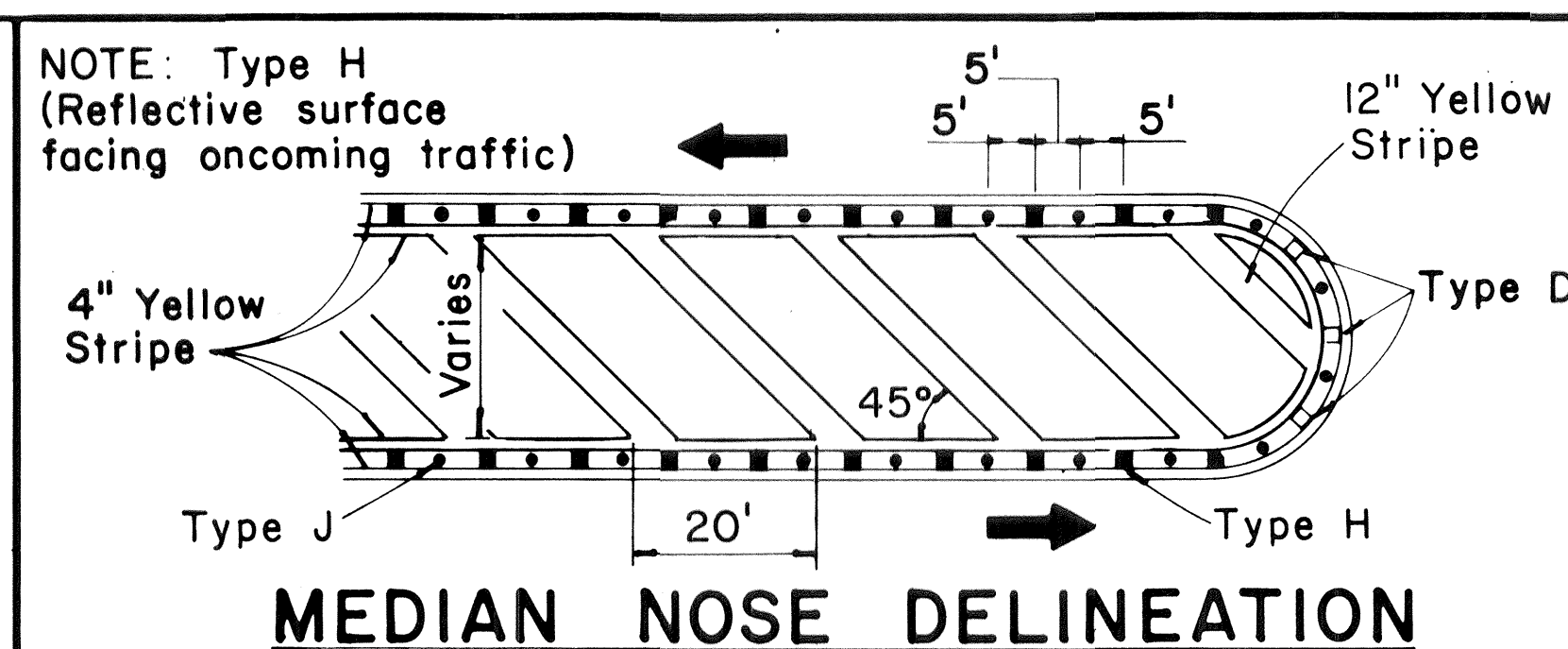
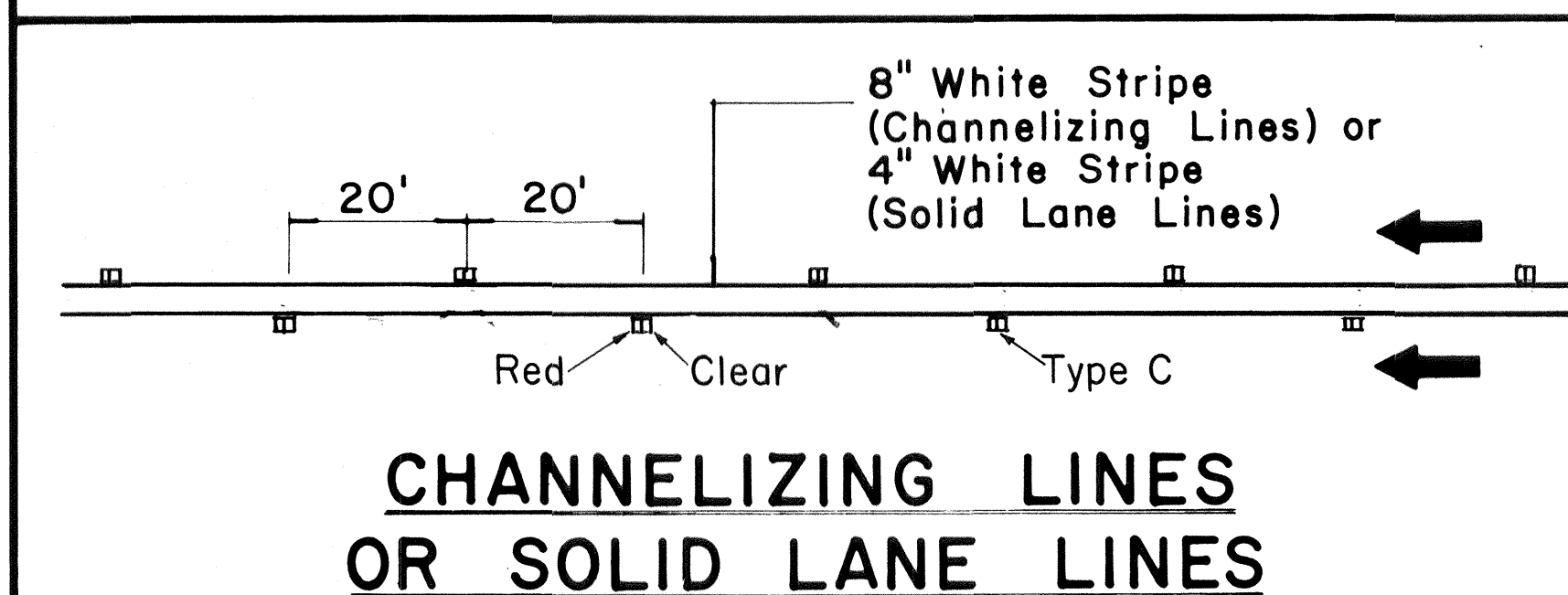
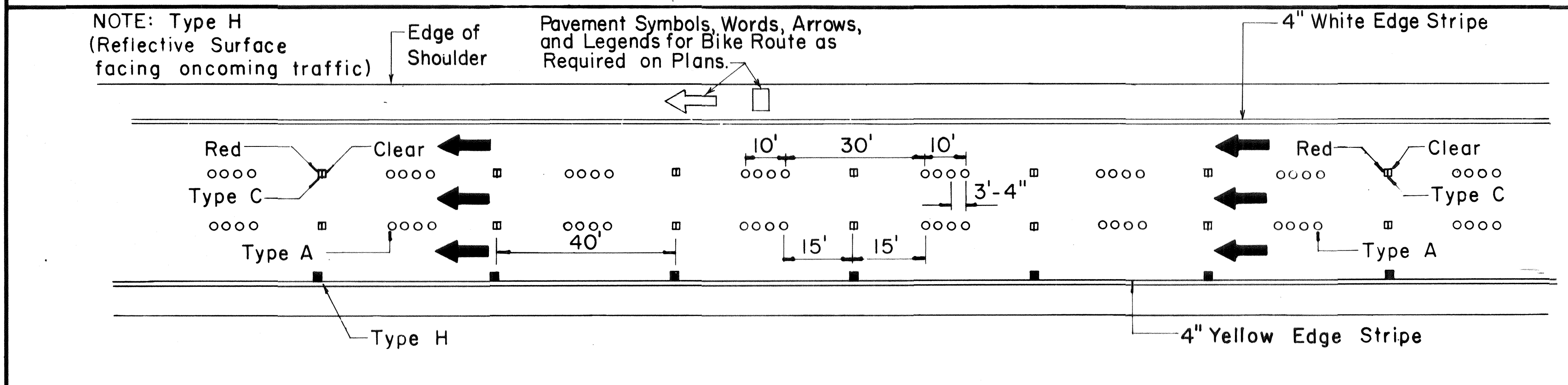
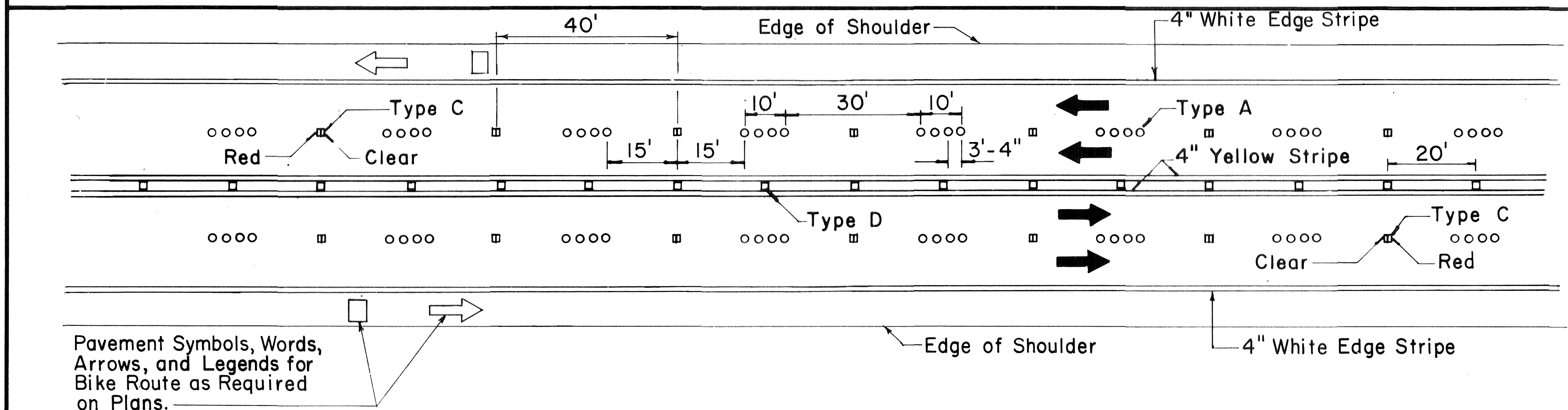
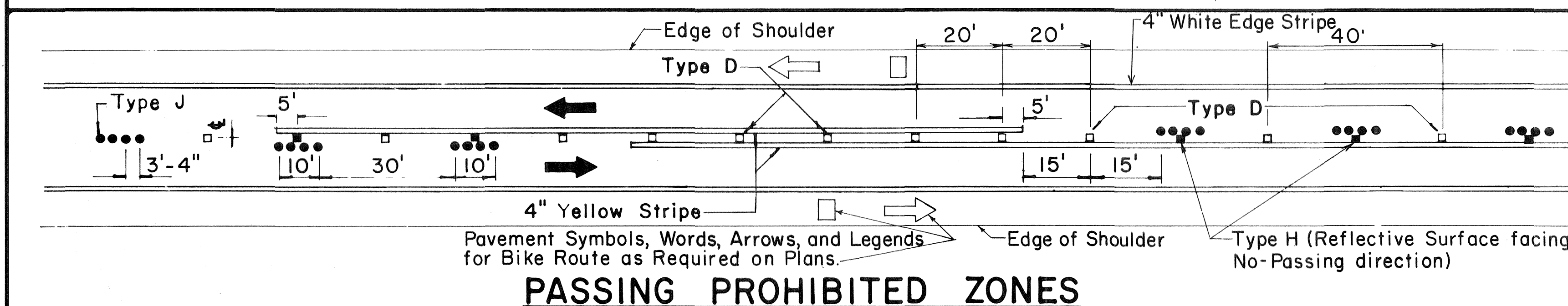
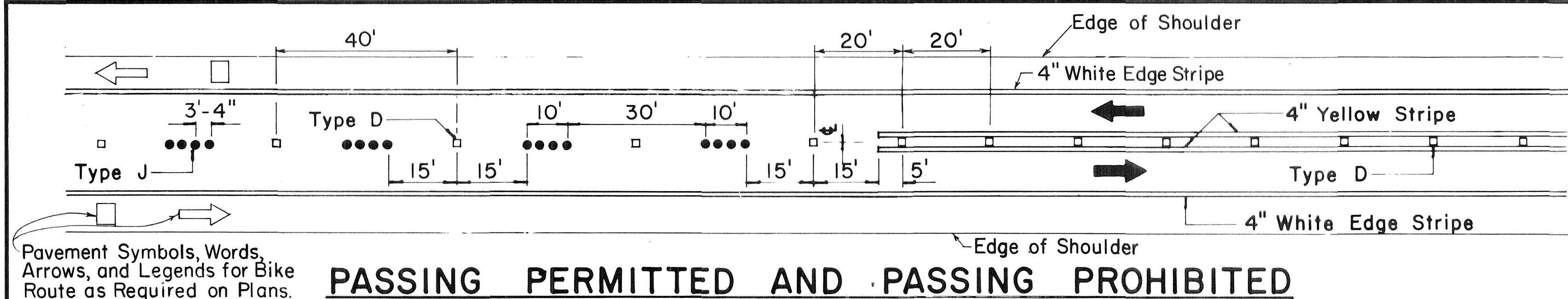
APPROVAL RECOMMENDED:
Erich Tanaka 3/21/72
 TRAFFIC ENGINEER DATE

APPROVED:
Sheldon Salsich 3/23/72
 ASSISTANT CHIEF, ENGINEERING DATE

STATE OF HAWAII DEPARTMENT OF TRANSPORTATION HIGHWAYS DIVISION STANDARD DETAILS CONSTRUCTION SIGNS NOT TO SCALE SHEET No. 4 OF 4 SHEETS DT 104
--

ORIGINAL PLAN	DATE
SURVEY PLOTTED BY	
DRAWN BY	
DESIGNED BY	
CHECKED BY	
NOTE BOOK	
No.	

FED. ROAD DIST. NO.	STATE	FED. AID PROJ. NO.	FISCAL YEAR	SHEET NO.	TOTAL SHEETS
HAWAII	HAW.	111-1174	1982	115-1	70

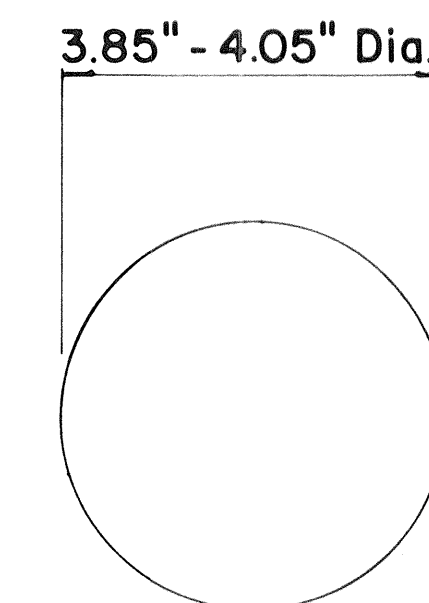


TWO - LANE

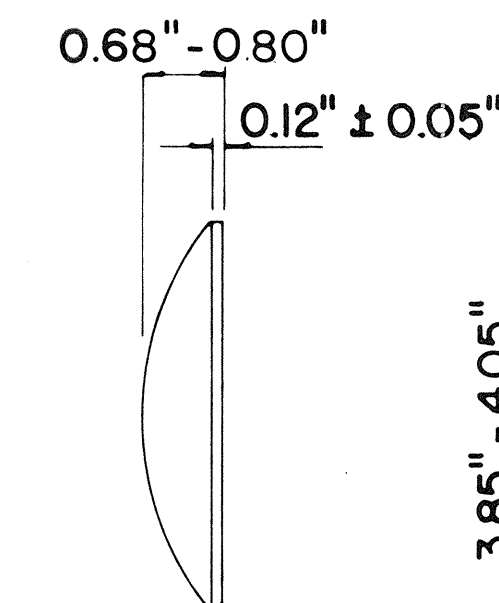
MULTI - LANE

DIVIDED HIGHWAY AND FREEWAY

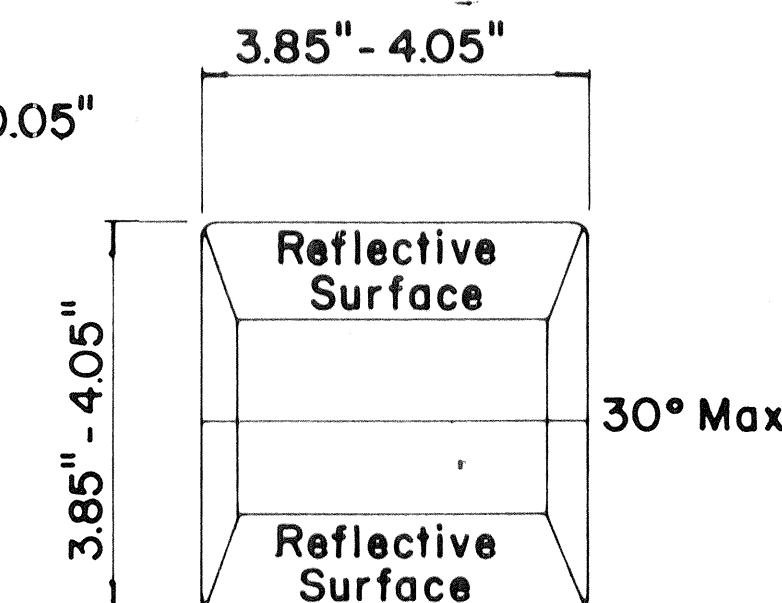
MISCELLANEOUS



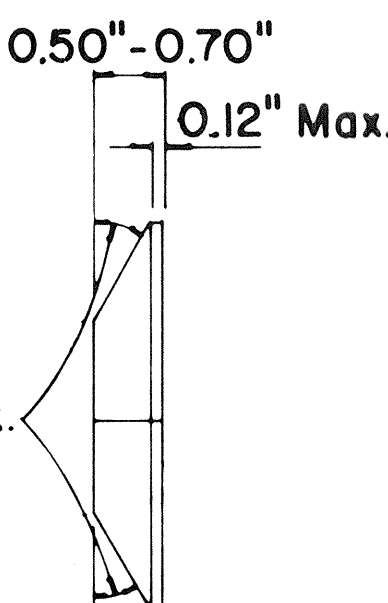
TYPE A
NON - REFLECTIVE WHITE MARKER



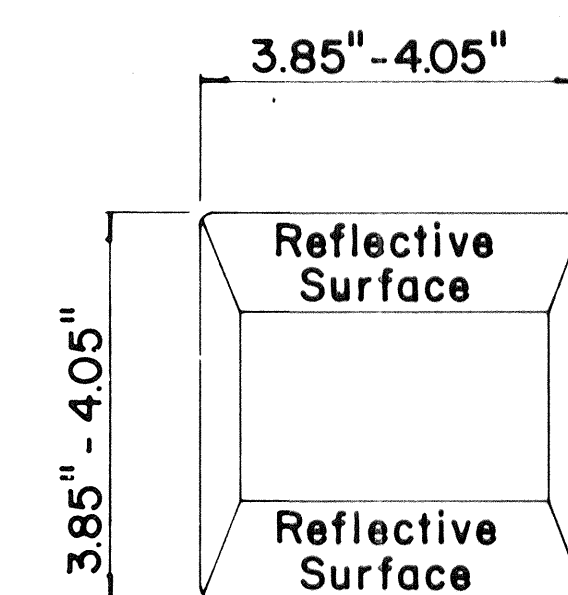
TYPE J
NON - REFLECTIVE YELLOW MARKER



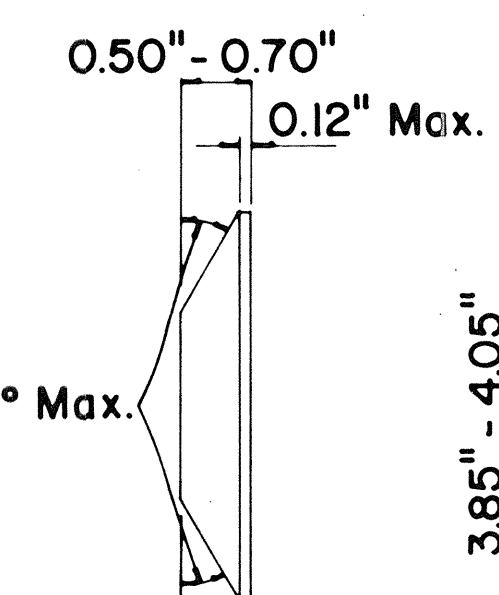
TYPE C
RED - CLEAR REFLECTIVE MARKER



TYPE H
ONE - WAY YELLOW REFLECTIVE MARKER



TYPE D
TWO - WAY YELLOW REFLECTIVE MARKER



GENERAL NOTES

- Pavement marking and striping shall conform to the latest "Manual on Uniform Traffic Control Devices for Streets and Highways," and as amended.
- Layout and installation of pavement marking and striping shall be done by the Contractor. The Contractor shall check the layouts with the Engineer prior to performing work.
- Edge lines shall not be continued through intersections and shall not be broken for driveways unless otherwise shown or directed.

LEGEND

- Type A
- Type C
- Type D
- Type H
- Type J

APPROVAL RECOMMENDED:

Eiichi Tanaka 7/21/78
TRAFFIC ENGINEER DATE

APPROVED:

Herbert B. Zekichi 1/24/78
ASSISTANT CHIEF, ENGINEERING DATE

No.	REVISION	APPROVED BY	DATE
1	Supersedes DT 300 approved 11/18/71.	H.T.	1/24/78
2	Delete Type A Markers from Bike Route Delineation.	H.T.	10/15/79
3	Added General Note 3. Revised left edge stripe.	H.T.	9-28-83
4	Revised Channelizing Lines or Solid Lane Lines.	E.T.	9/10/85

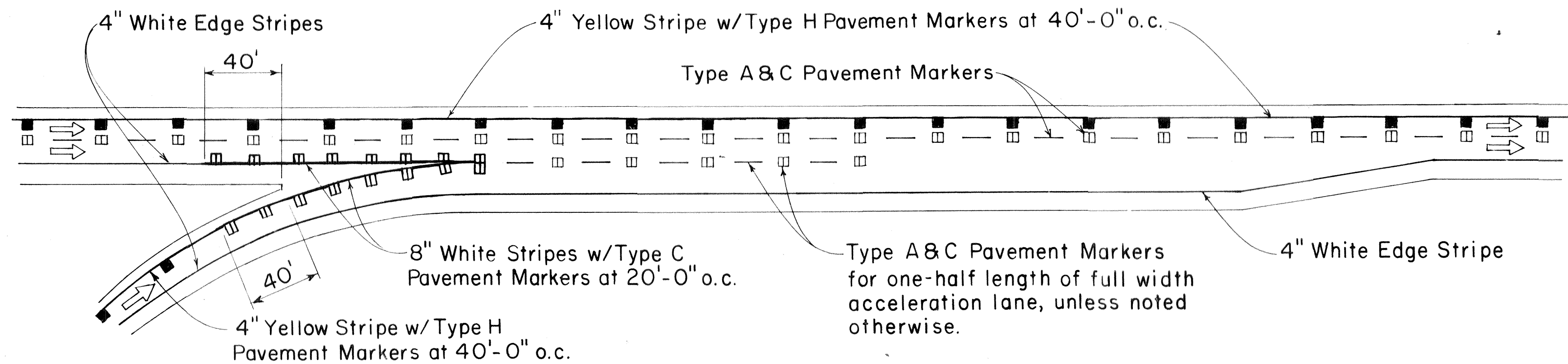
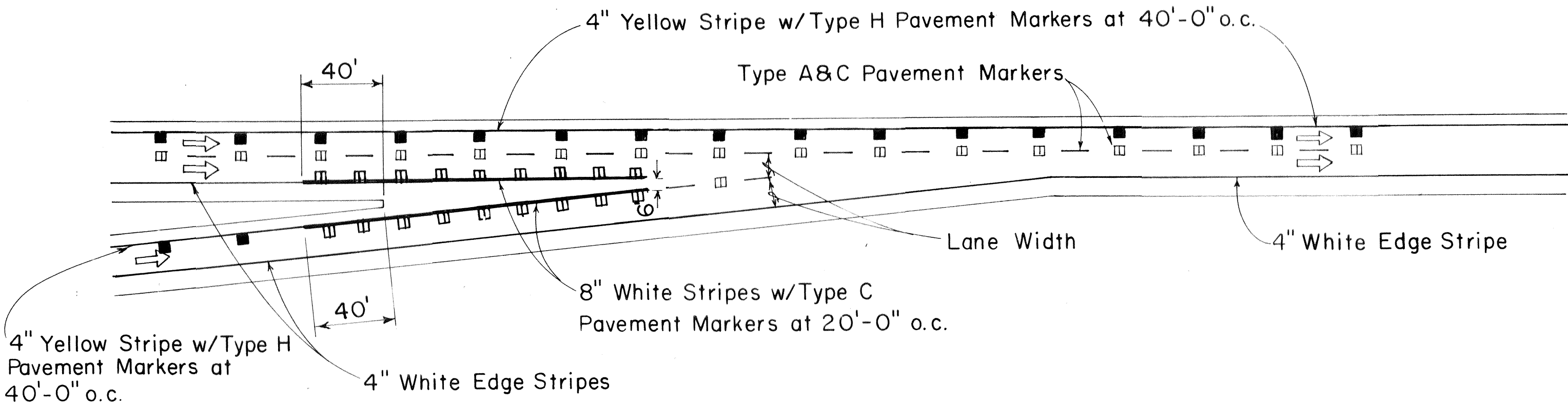
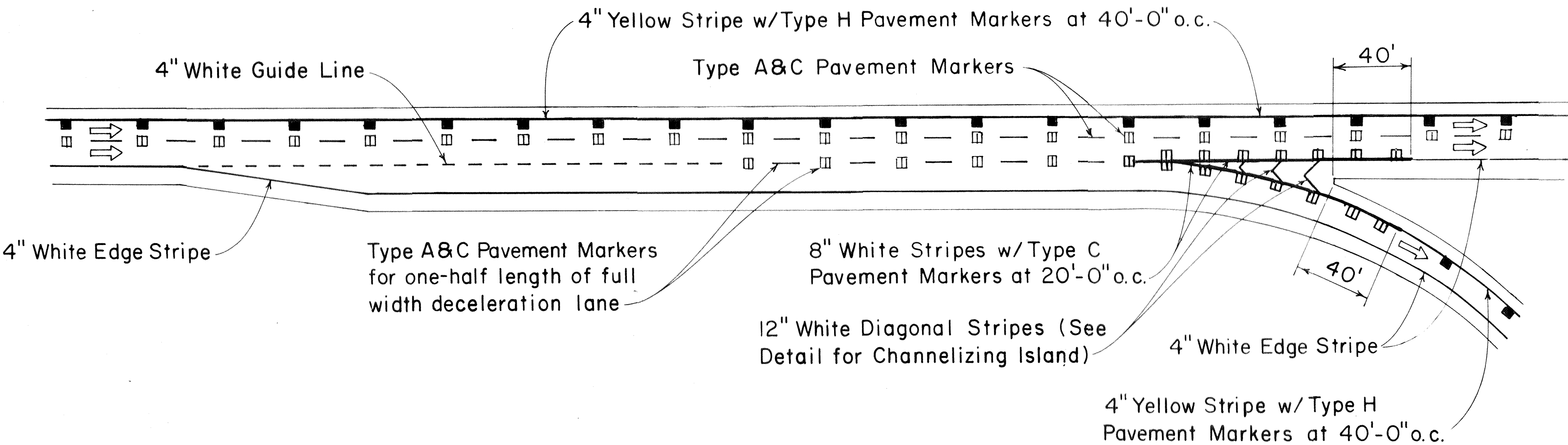
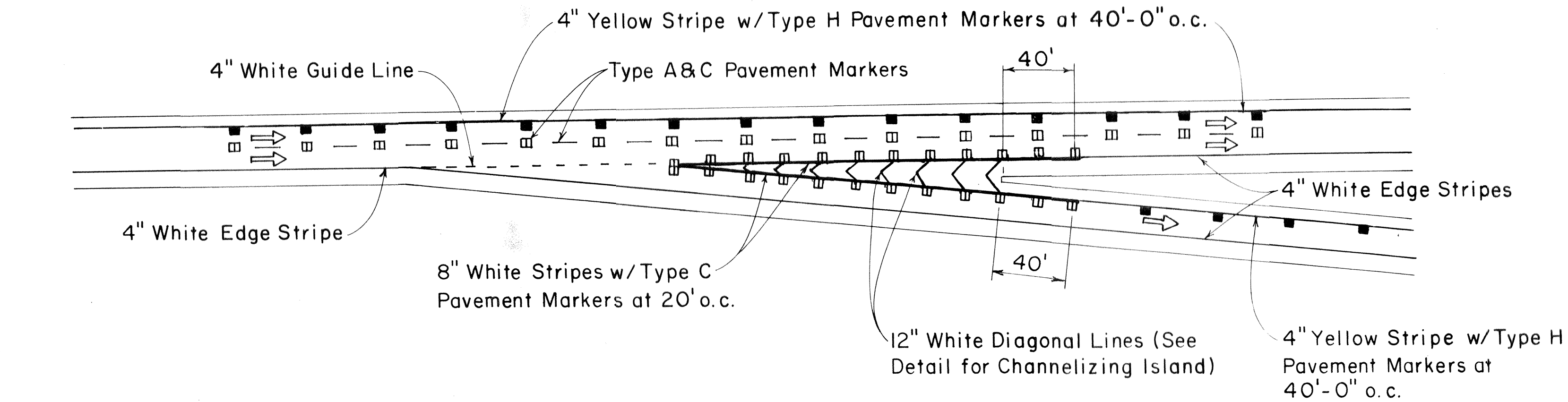
STATE OF HAWAII DEPARTMENT OF TRANSPORTATION HIGHWAYS DIVISION	
STANDARD DETAILS RAISED PAVEMENT MARKERS AND STRIPING	
Not to Scale	July 1978
SHEET No. 115-1	OF SHEETS DT 300

FED. ROAD DIST. NO.	STATE	FED. AID PROJ. NO.	FISCAL YEAR	SHEET NO.	TOTAL SHEETS
HAWAII	HAW.	EH-1(174)-1	1982	115-2	70

GENERAL NOTES:

1. Pavement Markings and Striping shall conform to the latest edition of the "Manual on Uniform Traffic Control Devices for Streets and Highways," by the FHWA, and as amended.
2. Layout of Pavement Markings and Striping shall be done by the Contractor. The Contractor shall check layout of markings and striping with the Engineer prior to performing work.
3. For additional details, see sheet DT 300.

ORIGINAL PLAN	SURVEY PLOTTED BY	DATE
NOTE BOOK	DRAWN BY	
	DESIGNED BY	
	CHECKED BY	
	NO.	



TAPERED DECELERATION LANE
PARALLEL DECELERATION LANE
TAPERED ACCELERATION LANE
PARALLEL ACCELERATION LANE
TYPICAL ROADWAY EXIT MARKINGS
TYPICAL ROADWAY ENTRANCE MARKINGS

Added Contract Change Order No. 9.

NO.	REVISION	APPROVED BY	DATE
1	Revised Typical Roadway Entrance Markings and Typical Roadway Exit Markings.	E.T.	9/12/85

APPROVAL RECOMMENDED:
Eiichi Tanaka
TRAFFIC ENGINEER
1/24/78
DATE

APPROVED:
Harold D. Zakerachi
ASSISTANT CHIEF, ENGINEERING
1/24/78
DATE

STATE OF HAWAII
DEPARTMENT OF TRANSPORTATION
HIGHWAYS DIVISION

STANDARD DETAILS
MISCELLANEOUS
PAVEMENT MARKINGS

Not to Scale
July 1978

SHEET NO. 115-2 OF SHEETS
SDT 304