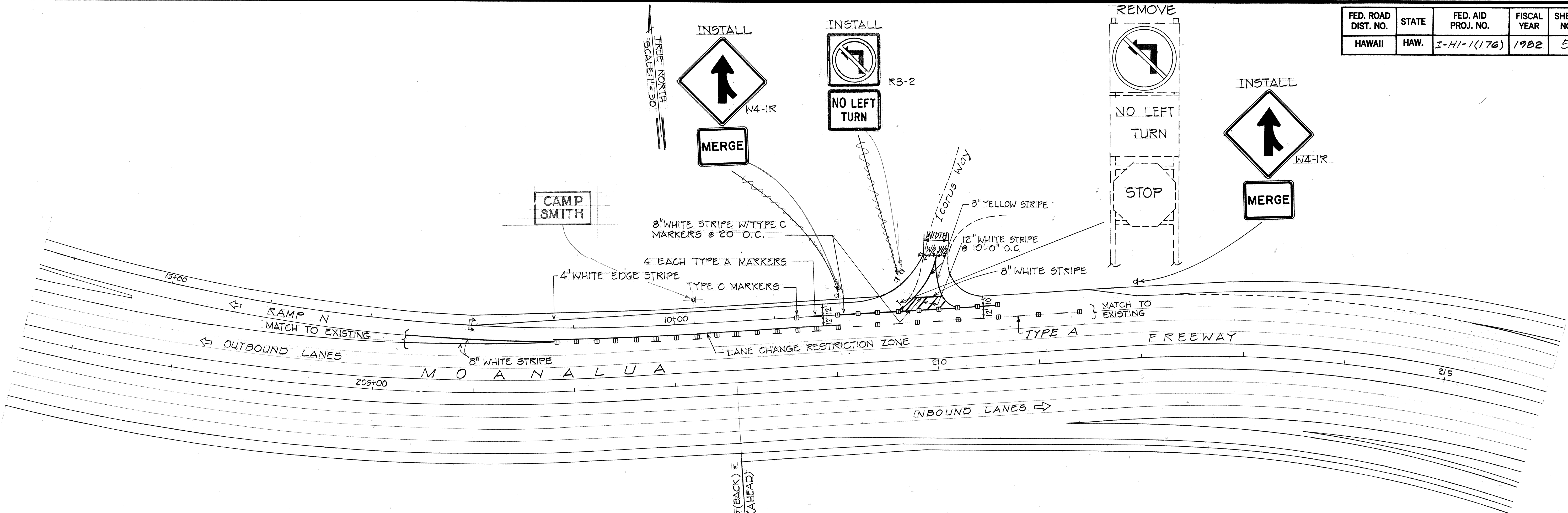


FED. ROAD DIST. NO.	STATE	FED. AID PROJ. NO.	FISCAL YEAR	SHEET NO.	TOTAL SHEETS
HAWAII	HAW.	I-HI-1(176)	1982	5	20



GENERAL NOTES

1. LOCATIONS OF ALL NEW PAVEMENT MARKINGS AND SIGNS SHALL BE STAKED OUT BY THE CONTRACTOR FOR APPROVAL BY THE ENGINEER PRIOR TO INSTALLATION.
2. EXISTING PAVEMENT MARKINGS AND SIGNS AND POSTS NOT INCORPORATED IN THE FINAL TRAFFIC PATTERN SHALL BE REMOVED AS DIRECTED BY THE ENGINEER. COSTS SHALL BE INCIDENTAL TO THE VARIOUS CONTRACT ITEMS.
3. FOR ADDITIONAL PAVEMENT MARKING DETAILS, REFER TO STANDARD DETAILS DT-300 & DT-302.
4. PAVEMENT MARKING TAPE SHALL BE USED FOR ALL PAVEMENT MARKINGS AND STRIPING EXCEPT 4" WHITE EDGE STRIPE WHICH SHALL BE PAINTED.

ORIGINAL PLAN	SURVEY PLOTTED BY	DATE
NOTE BOOK	DRAWN BY	" "
No.	DESIGNED BY	" "
	QUANTITIES BY	" "
	CHECKED BY	" "

STATE OF HAWAII
DEPARTMENT OF TRANSPORTATION
HIGHWAYS DIVISION

PAVEMENT MARKING & STRIPING PLAN

IMPROVEMENTS TO RAMP N
INTERSTATE ROUTE H-1
HALAWA INTERCHANGE
F.A.I. PROJ. NO. I-HI-1(176)
Scale: As Shown Date:

SHEET No. 5 OF 20 SHEETS