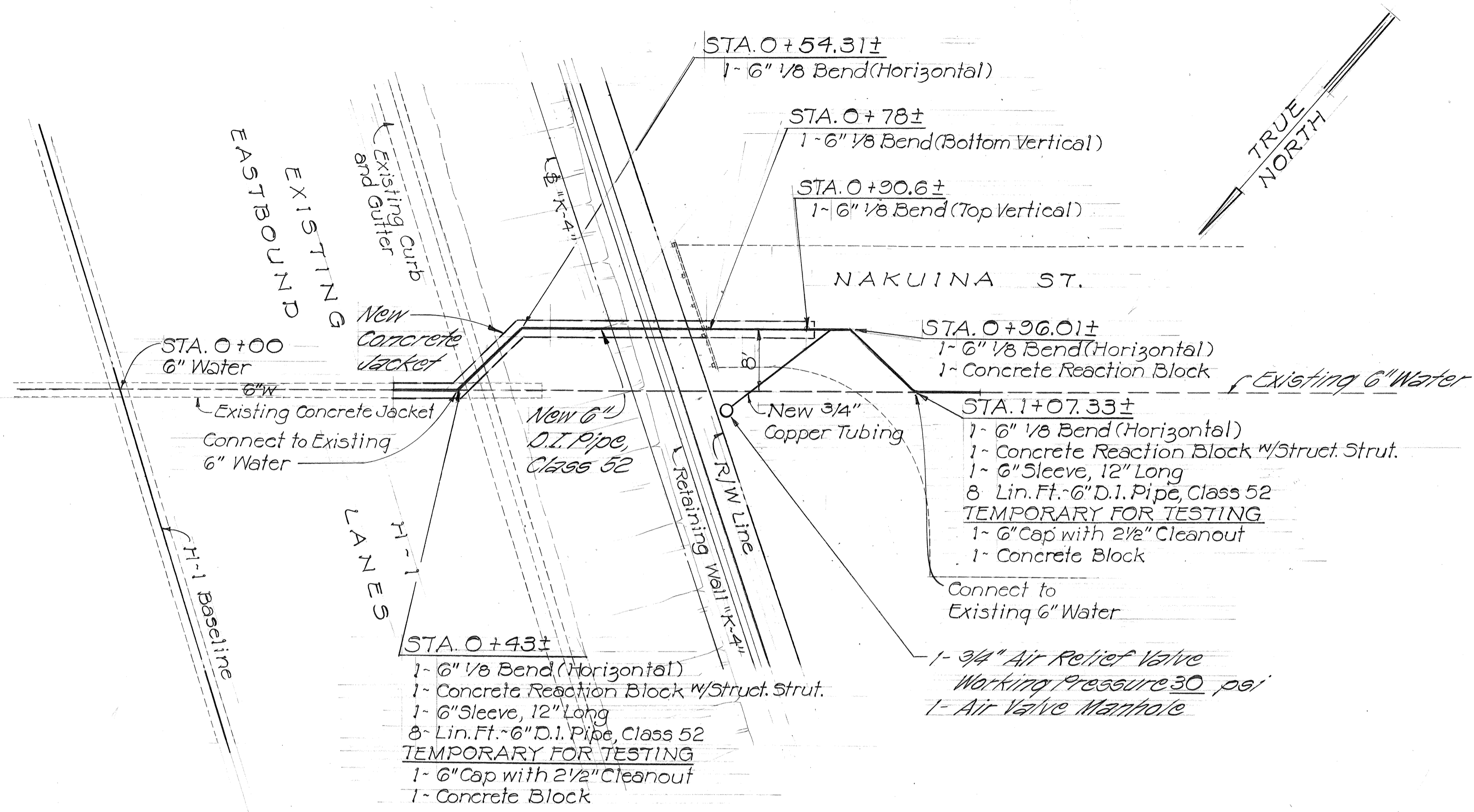
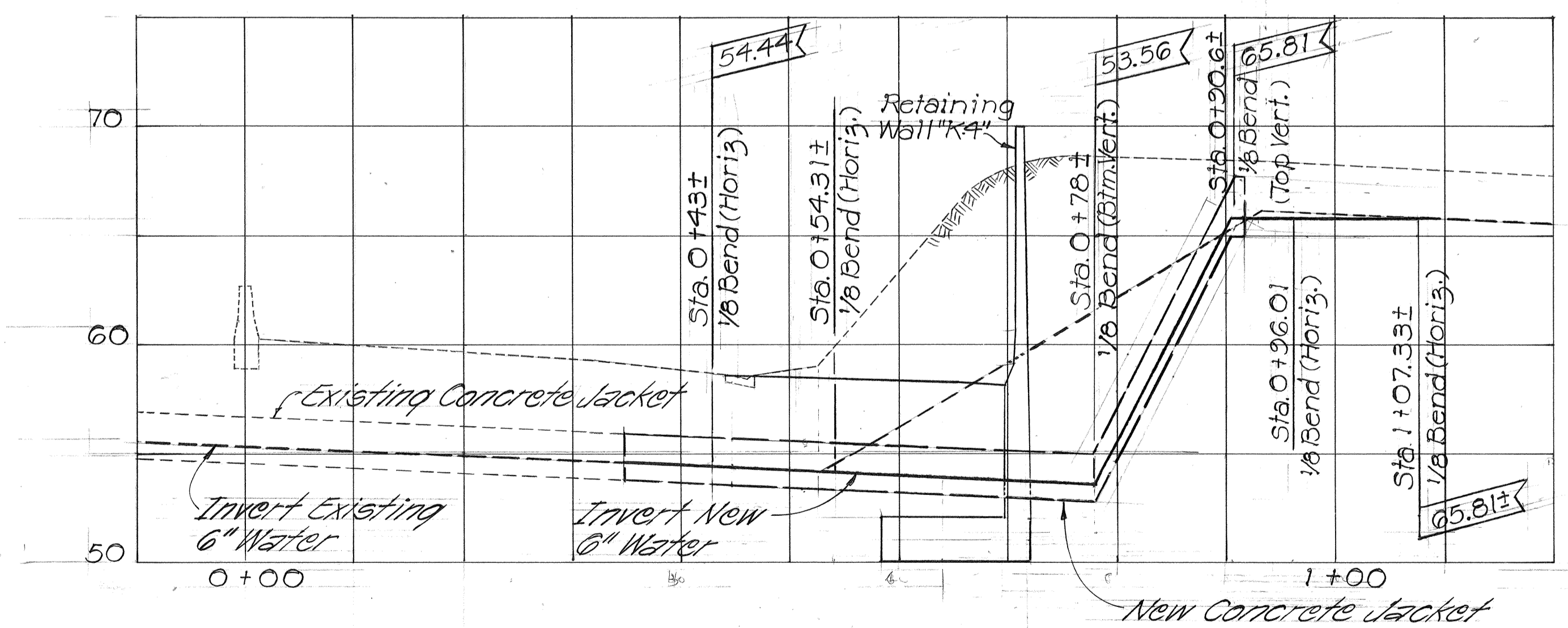


FED. ROAD DIST. NO.	STATE	FED. AID PROJ. NO.	FISCAL YEAR	SHEET NO.	TOTAL SHEETS
HAWAII	HAW.	I-HI-1(178)	1982	18	165



PLAN ~ NEW 6" WATER
 @ STA. 41+55±
 SCALE: 1"=10'



PROFILE ~ NEW 6" WATER
 @ STA. 41+55±
 SCALE: HORIZ. 1" = 10'-0"
 VERT. 1" = 5'-0"

GENERAL WATER NOTES:

1. Unless otherwise specified, all materials and construction of water system facilities and appurtenances shall be in accordance with the STANDARD SPECIFICATIONS FOR ROAD AND BRIDGE CONSTRUCTION, dated 1976, as amended, of the Hawaii Highways Division, Department of Transportation.
2. Prior to excavating for new drain, sewer, and other utility lines, the Contractor shall verify in the field the location of existing water mains and appurtenances. Where the installation of new drain, sewer, or other utility lines are to cross over or under existing water mains, the Contractor shall expose the existing water mains prior to trenching. Excavation around water mains shall be done by hand.
3. The Contractor shall notify the Board of Water Supply in writing one week prior to commencing work on the water system.
4. Approval by the Board of Water Supply is based solely on the adequacy of the water supply. Discrepancies, if any, of alignments, grades, fittings, etc. shall not be the responsibility of the Board of Water Supply.
5. The existence and location of underground utilities and structures as shown on the plans are from the latest available data but is not guaranteed as to the accuracy or the encountering of other obstacles during the course of the work. The Contractor shall be responsible and shall pay for all damages to existing utilities.
6. Any adjustments to the existing water system required during construction to meet requirements of BWS Standards, whether shown on the plans or not, shall be done by the Contractor at no cost to the Board.
7. The BWS Standard Details, Figures 1 to 62 inclusive, bound in the "Water System Standards" of the BWS, dated March 1977, as amended, are applicable to this Project.
8. The Contractor shall notify the Board of Water Supply Field Operations Division (548-5207) for toning services to locate the water mains in the following locations prior to commencing any work.
 - 1.) @ Sta. 17+00±, 24-inch & 6-inch water mains.
 - 2.) @ Sta. 36+80±, 36-inch water main.
 - 3.) @ Sta. 41+55±, 6-inch water main.
 The Contractor shall not operate any heavy equipment over these pipes when the cover over these pipes are less than three feet. During excavation and subgrade work and during laying and compaction of the base materials every precaution shall be taken to prevent any heavy equipment from being operated over these pipes.

APPROVED: _____ Date 4-30-82

for CHIEF, PLANNING & ENGINEERING, BWS

STATE OF HAWAII
 DEPARTMENT OF TRANSPORTATION
 HIGHWAYS DIVISION

WATER UTILITY PLAN
 INTERSTATE H-1 IMPROVEMENTS
 MIDDLE STREET TO KALIHI INTERCHANGE
 EASTBOUND LANES
 F. A. I. PROJECT NO. I-HI-1(178)
 Scale: As Shown

SHEET NO. 18 OF SHEETS

SURVEY PLOTTED BY	DATE
DRAWN BY	
TRACED BY	
QUANTITIES BY	
CHECKED BY	
ORIGINAL PLAN	
NOTE BOOK	
No.	