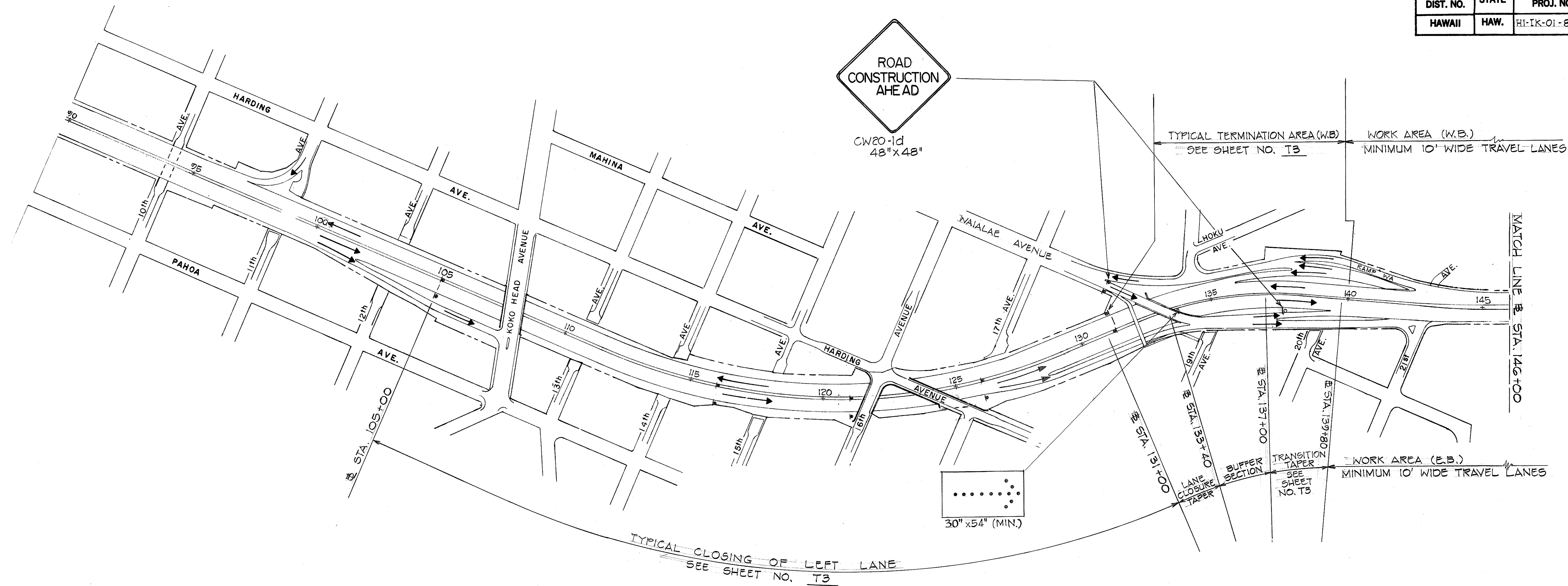
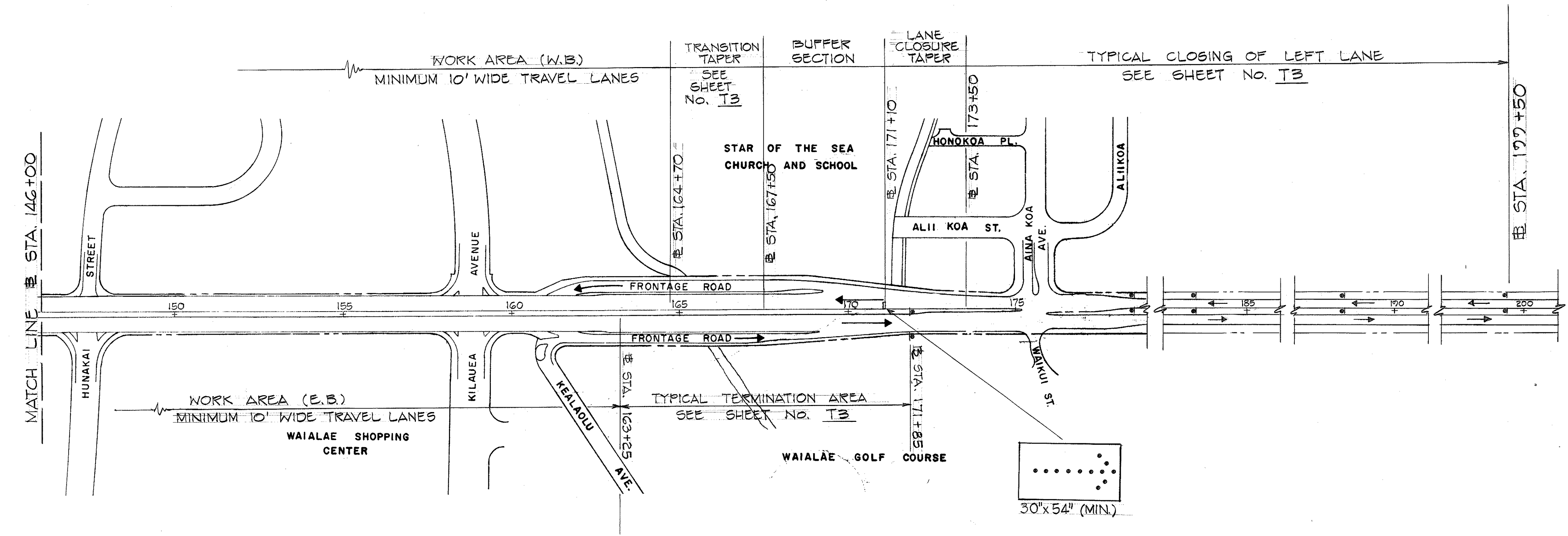


FED. ROAD DIST. NO.	STATE	PROJ. NO.	FISCAL YEAR	SHEET NO.	TOTAL SHEETS
HAWAII	HAW.	HI-1K-01-82M	1982	12	19



- NOTES**
1. SIGNS, CONES OR DELINEATORS, POLICE OFFICERS, CHANGEABLE-MESSAGE SIGNS, FLASHING ARROW SIGNALS AND OTHER TRAFFIC CONTROL DEVICES SHALL BE LAID OUT AS SHOWN ON SHEET NO. T3 - TYPICAL DETAIL TRAFFIC CONTROL PLAN
  2. THE GENERAL LOCATION OF EACH TYPICAL SECTION OR AREA IS SHOWN ON THIS SHEET.



STATE OF HAWAII  
DEPARTMENT OF TRANSPORTATION  
HIGHWAYS DIVISION

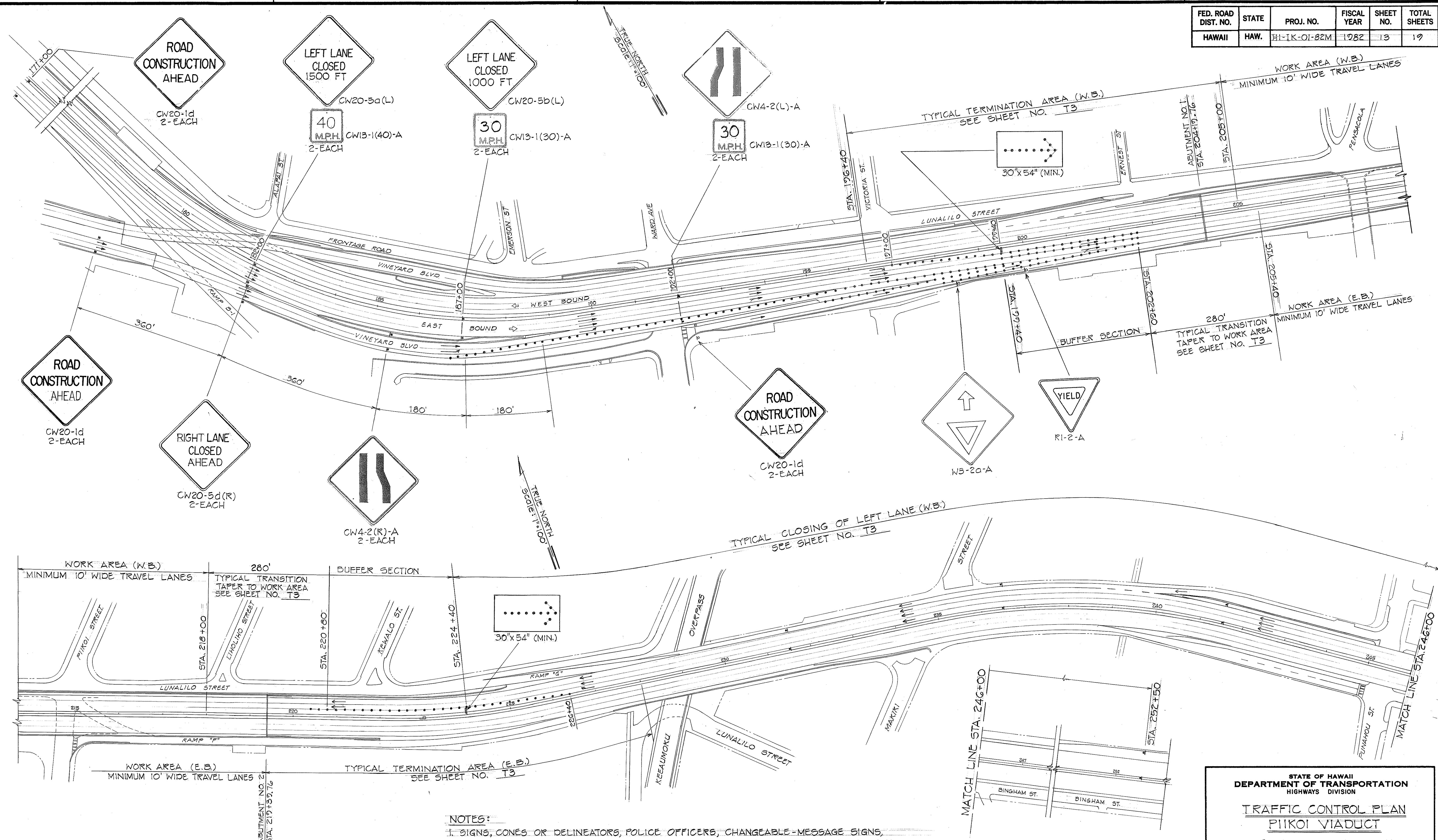
**TRAFFIC CONTROL PLAN**  
**WAIALAE VIADUCT**

REPLACE JOINT SEALS ON  
WAIALAE AND PITKOI VIADUCTS  
PROJECT NO. HI-1K-01-82M

SCALE: 1" = 200' DATE: MAY, 1982  
SHEET NO. 11 OF 8 SHEETS

ORIGINAL PLAN	DATE
DRAWN BY	
CHECKED BY	
NOTED BY	
QUANTITIES BY	
CHECKED BY	

FED. ROAD DIST. NO.	STATE	PROJ. NO.	FISCAL YEAR	SHEET NO.	TOTAL SHEETS
HAWAII	HAW.	H1-1K-01-82M	1982	13	19



NOTES:

1. SIGNS, CONES OR DELINEATORS, POLICE OFFICERS, CHANGEABLE-MESSAGE SIGNS, FLASHING ARROW SIGNALS, AND OTHER TRAFFIC CONTROL DEVICES SHALL BE LAID OUT AS SHOWN ON SHEET NO. T3 - TYPICAL DETAIL TRAFFIC CONTROL PLAN.
2. THE GENERAL LOCATION OF EACH TYPICAL SECTION OR AREA IS SHOWN ON THIS SHEET.

STATE OF HAWAII  
DEPARTMENT OF TRANSPORTATION  
HIGHWAYS DIVISION

**TRAFFIC CONTROL PLAN**  
**PIIKOI VIADUCT**

REPLACE JOINT SEALS ON  
WAIALAE AND PIIKOI VIADUCTS  
PROJECT NO. H1-1K-01-82M

SCALE: 1"=100' DATE: APRIL, 1982  
SHEET NO. T2 OF 8 SHEETS

ORIGINAL PLAN	DATE
SURVEY PLOTTED BY	" "
DRAWN BY	" "
DESIGNED BY	" "
QUANTITIES BY	" "
CHECKED BY	" "
NOTE BOOK	" "
NO.	" "



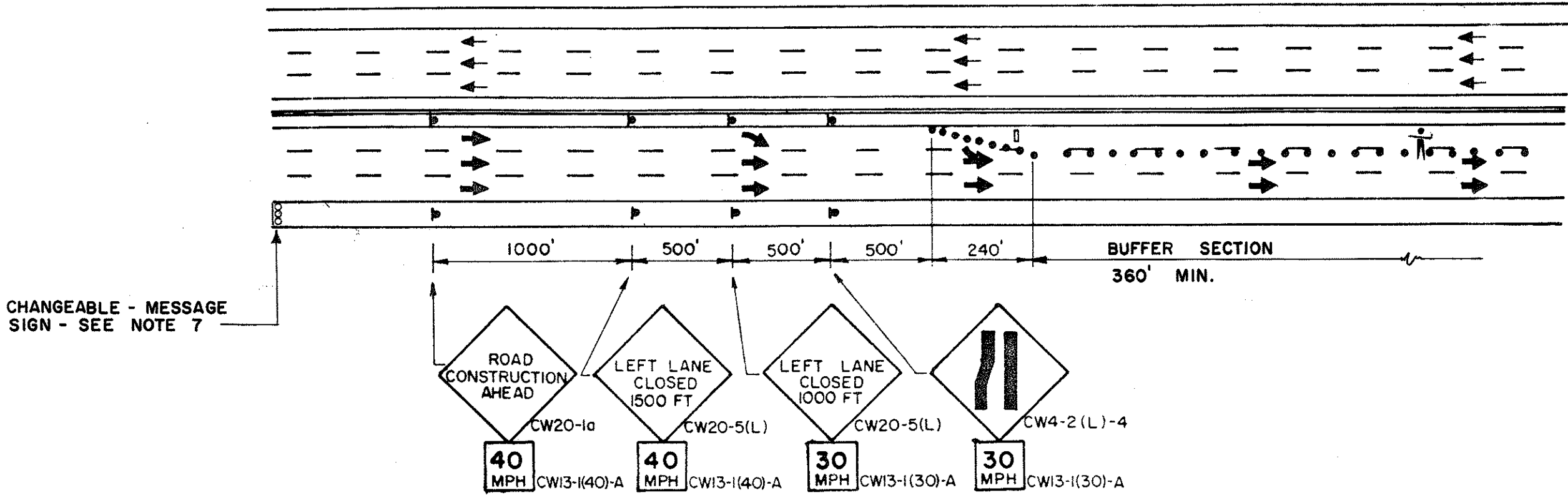
FED. ROAD DIST. NO.	STATE	PROJ. NO.	FISCAL YEAR	SHEET NO.	TOTAL SHEETS
HAWAII	HAW.	HI-1K-01-82M	1982	14	19

### LEGEND

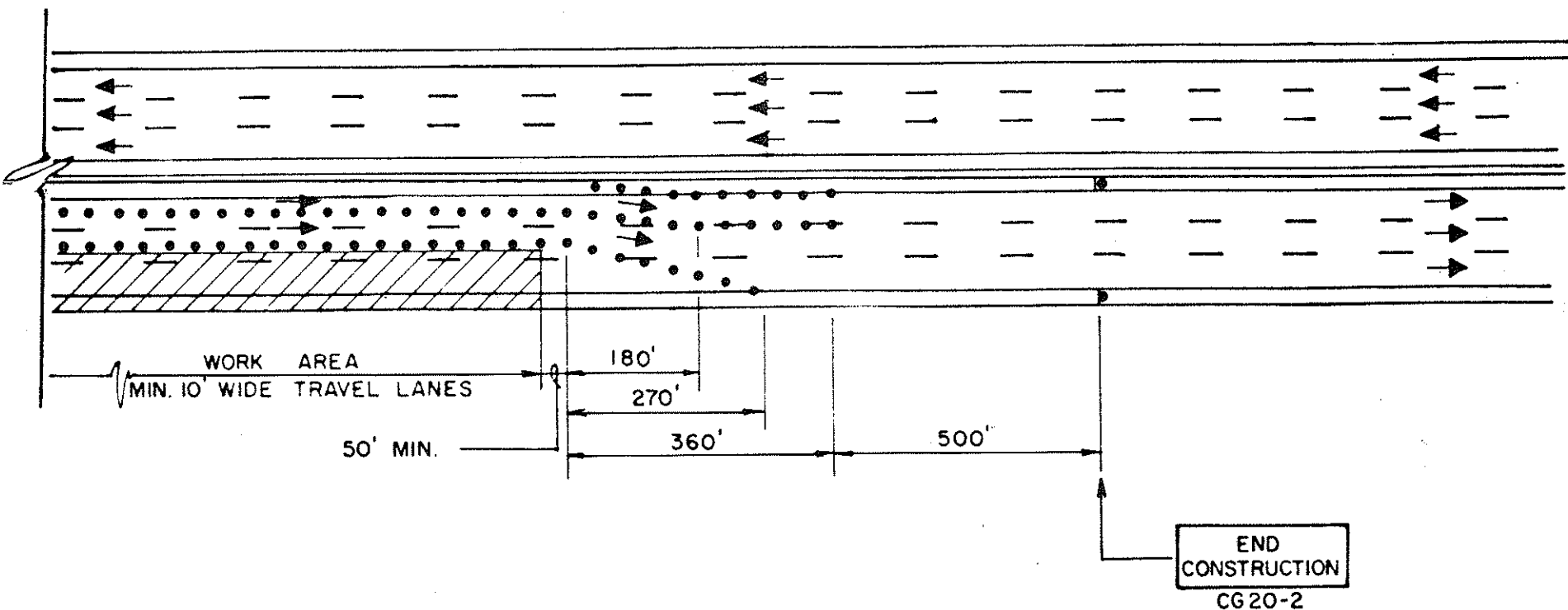
- ▶ SIGN
- CONE OR DELINEATOR
- DIRECTION OF TRAFFIC
- ⏏ FLASHING ARROW SIGNAL
- EXISTING PAVEMENT MARKING
- 👮 POLICE OFFICER

### NOTES

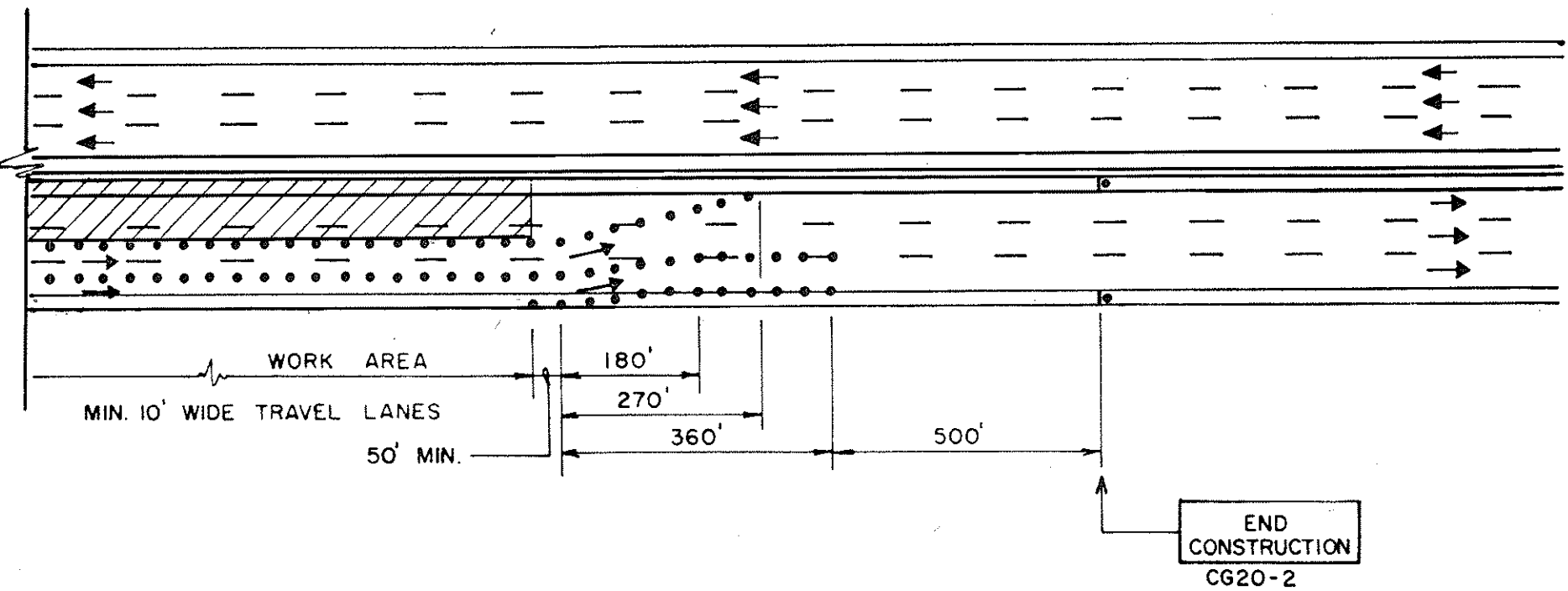
- CONES OR DELINEATORS SHALL BE PLACED AT 20 FEET O.C. MAX. (SPACINGS SHOWN ARE N.T.S.)
- SUPPLEMENTAL ADVANCE WARNING SIGNS SHALL BE POSTED IN THE MEDIAN. SIGNS ARE NOT REQUIRED ON OPPOSITE APPROACH.
- MINIMUM LEGIBILITY DISTANCE FOR FLASHING ARROW SIGNAL SHALL BE 3/4 MILE.
- ALL TRAFFIC CONTROL DEVICES SHOWN, INCLUDING SIGNS, SHALL CONFORM TO THE LATEST EDITION OF THE FHWA PUBLICATION, "MANUAL ON UNIFORM TRAFFIC CONTROL DEVICES" AND AS AMENDED.
- THE CONTRACTOR SHALL COVER ALL EXISTING SIGNS THAT ARE NOT APPLICABLE AS REQUIRED AND AS DIRECTED BY THE ENGINEER.
- TRAFFIC CONTROL DEVICES, INCLUDING SIGNS, ARE SHOWN AT APPROXIMATE LOCATIONS ONLY. FINAL LOCATIONS SHALL BE DETERMINED IN THE FIELD AND APPROVED BY THE ENGINEER BEFORE CONSTRUCTION WORK BEGINS.
- THE CONTRACTOR SHALL INSTALL A CHANGEABLE-MESSAGE SIGN AT A LOCATION DESIGNATED IN THE FIELD BY THE ENGINEER. THE SIGN SHALL BE RELOCATED AS NECESSARY WHEN DIRECTED BY THE ENGINEER.
- THE CONTRACTOR SHALL PROVIDE FOR AN EXIT LANE TO RAMP WA (WAIALAE EXIT 26) DURING CONSTRUCTION ON THE WESTBOUND LANES OF THE WAIALAE VIADUCT.



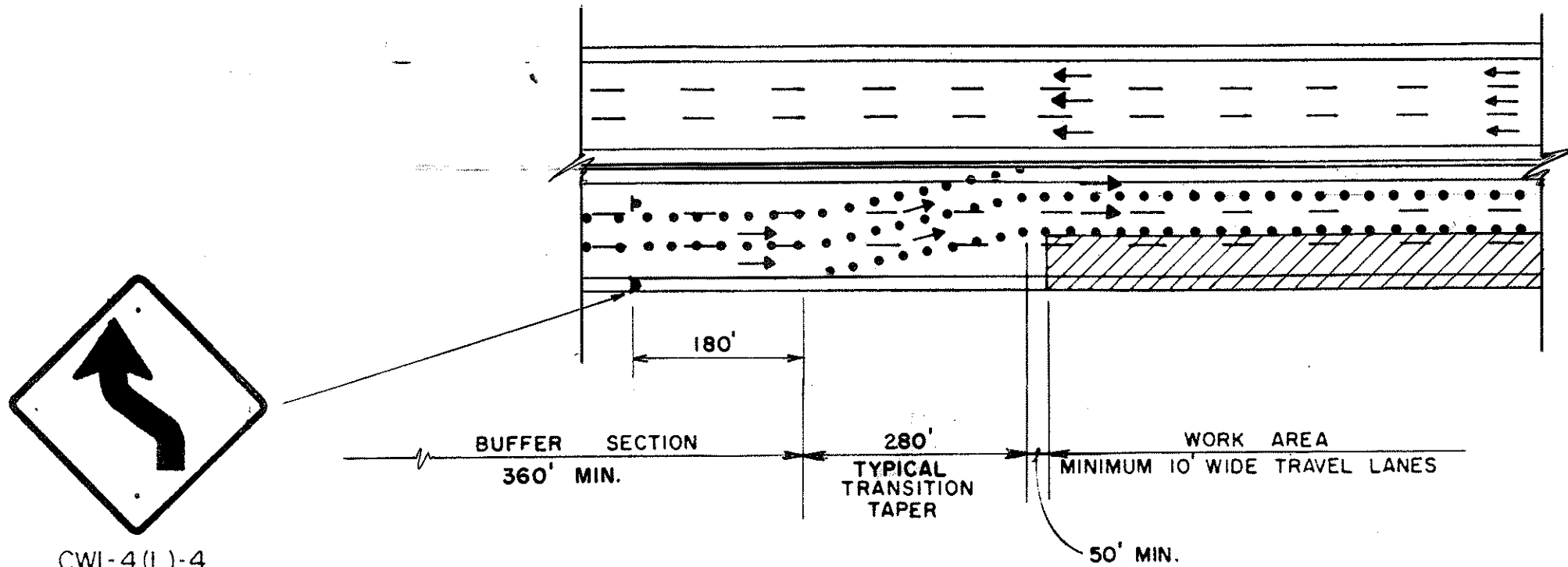
TYPICAL CLOSING OF LEFT LANE



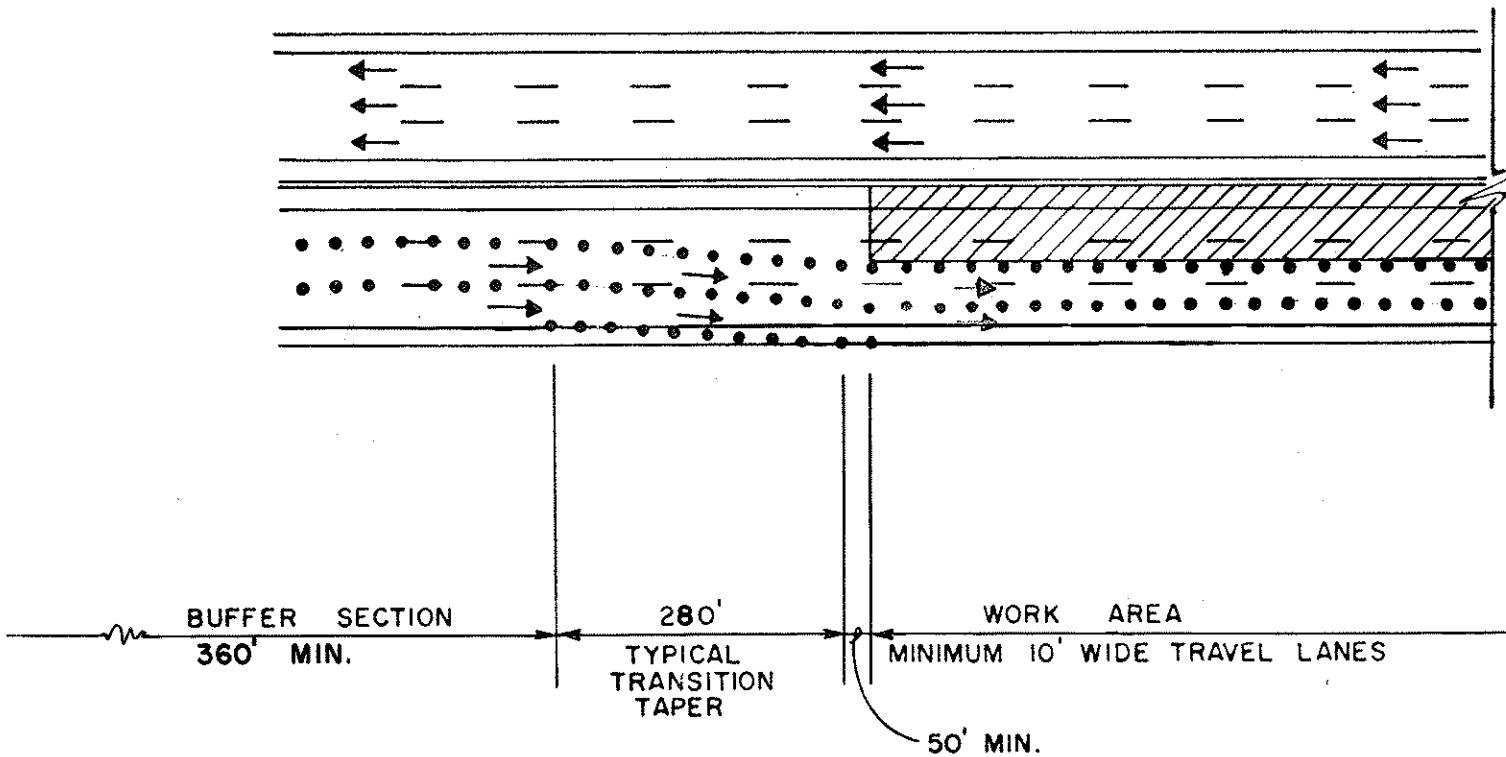
TYPICAL TERMINATION AREA  
WORK AREA RIGHT OF TRAVELED WAY



TYPICAL TERMINATION AREA  
WORK AREA LEFT OF TRAVELED WAY



TYPICAL TRANSITION TAPER  
WORK AREA RIGHT OF TRAVELED WAY



TYPICAL TRANSITION TAPER  
WORK AREA LEFT OF TRAVELED WAY

DATE	_____
SURVEY PLOTTED BY	_____
DRAWN BY	_____
DESIGNED BY	_____
QUANTITIES BY	_____
CHECKED BY	_____
ORIGINAL PLAN	_____
NOTE BOOK	_____
No.	_____

STATE OF HAWAII  
DEPARTMENT OF TRANSPORTATION  
HIGHWAYS DIVISION

TYPICAL DETAIL  
TRAFFIC CONTROL PLAN

SCALE: NOT TO SCALE  
DATE: APRIL, 1982  
SHEET NO. 13 OF 8 SHEETS