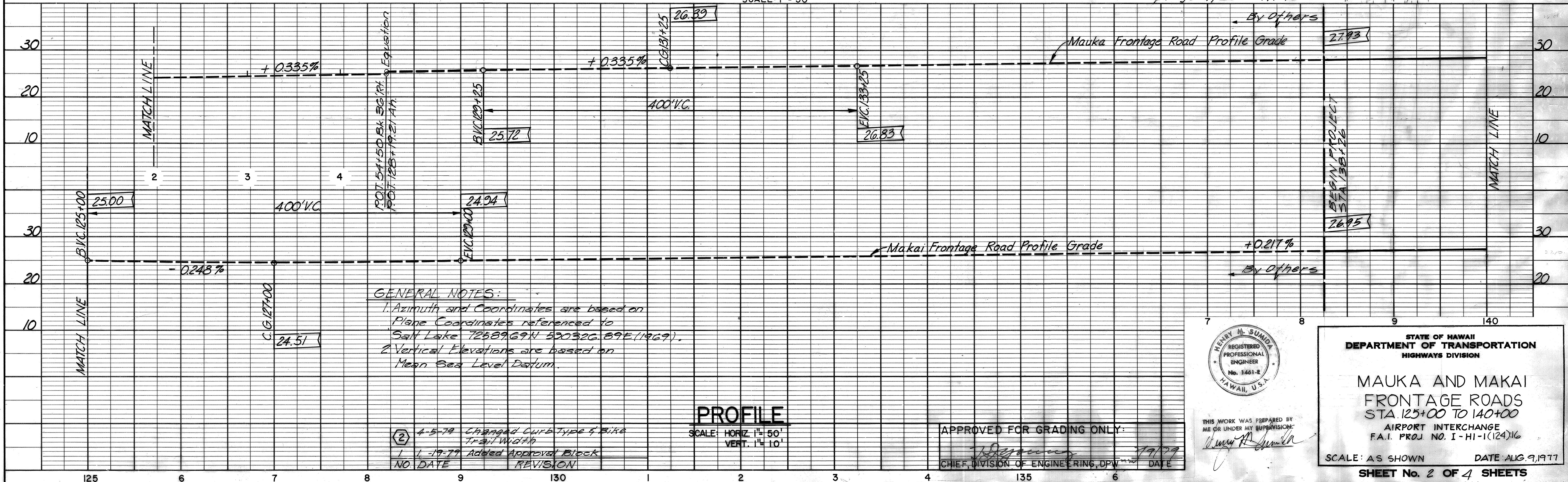
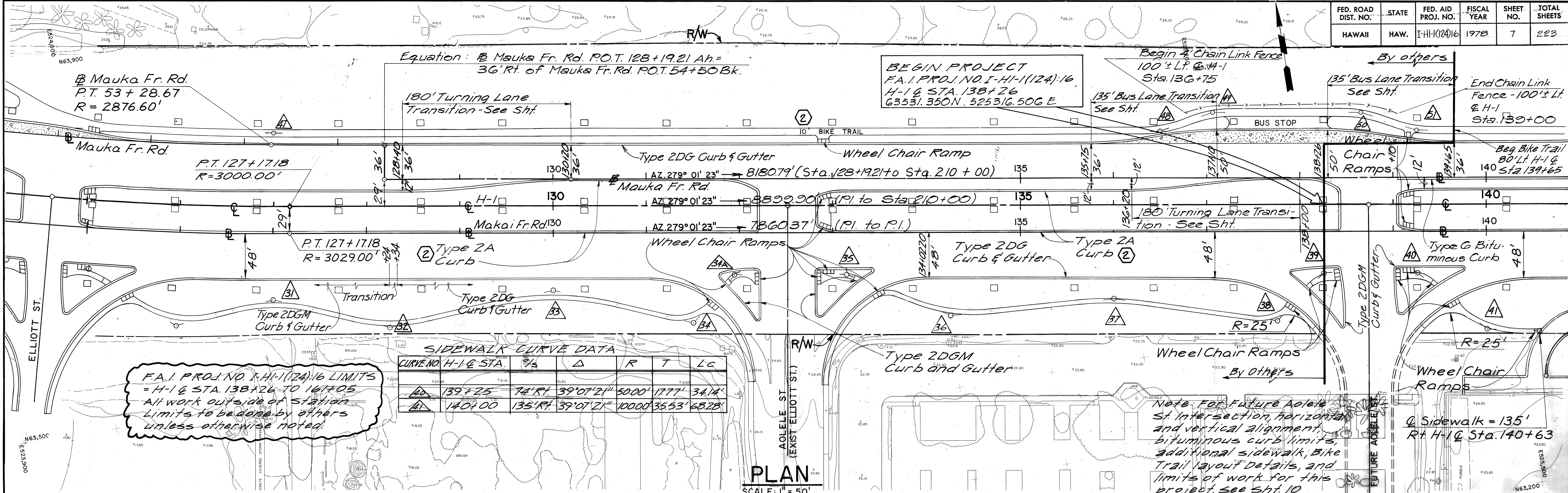


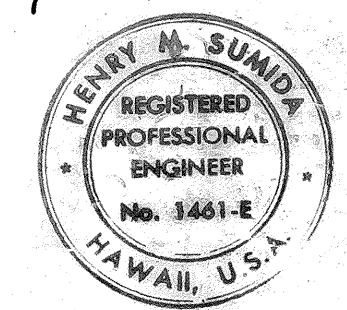
PLAN  
 SURVEYED  
 PLOTTED  
 ALIGNED CHECKED  
 NOTE BOOK  
 NO. OF WAYS CHECKED  
 NO.

PROFILE  
 SURVEYED  
 PLOTTED  
 GRADES CHECKED  
 NOTE BOOK  
 NO. OF WAYS CHECKED  
 NO.



NO.	DATE	REVISION
2	4-5-79	Changed Curb Type & Bike Trail Width
1	1-19-77	Added Approval Block

APPROVED FOR GRADING ONLY:  
 [Signature]  
 CHIEF, DIVISION OF ENGINEERING, DPW  
 DATE: 7/7/79



STATE OF HAWAII  
 DEPARTMENT OF TRANSPORTATION  
 HIGHWAYS DIVISION

**MAUKA AND MAKAI FRONTAGE ROADS**  
 STA. 125+00 TO 140+00  
 AIRPORT INTERCHANGE  
 F.A.I. PROJ. NO. I-HI-1(124)16

SCALE: AS SHOWN  
 DATE: AUG. 9, 1977

SHEET No. 2 OF 4 SHEETS

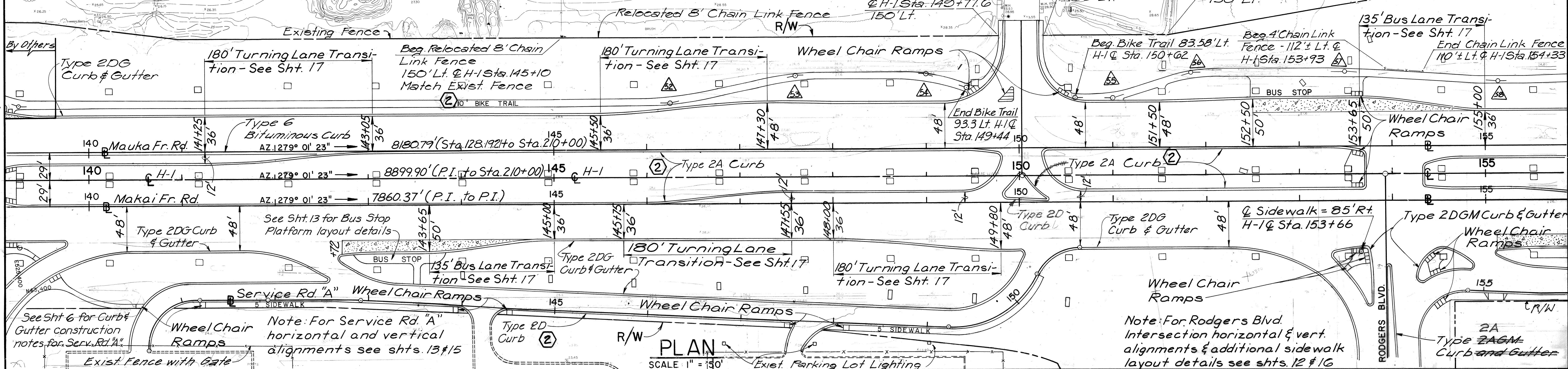


FED. ROAD DIST. NO.	STATE	FED. AID PROJ. NO.	FISCAL YEAR	SHEET NO.	TOTAL SHEETS
HAWAII	HAW.	1-11-1(24)6	1978	8	223

CURVE NO.	H-I Q STA.	P/S	Δ	R	T	LC	CURVE NO.	H-I Q STA.	P/S	Δ	R	T	LC
1A	152+12	106°RT	17°32'56"	300.00'	46.31'	91.89'	5A	151+85	110°LT	17°15'59"	180.00'	27.33'	54.24'
1B	153+29	143°RT	75°00'50"	95.00'	72.91'	124.38'	5B	153+50	110°LT	3°59'13"	1000.00'	34.81'	69.58'
2A	146+25	80°LT	12°31'44"	500.00'	54.89'	109.33'	5C	155+15	98.50°LT	5°53'46"	1000.00'	51.50'	102.91'
2B	147+60	110°LT	12°31'44"	200.00'	21.95'	43.73'							
2C	149+00	110°LT	20°48'24"	200.00'	36.72'	72.63'							
2D	151+00	83.58°LT	17°15'59"	140.00'	21.24'	42.19'							

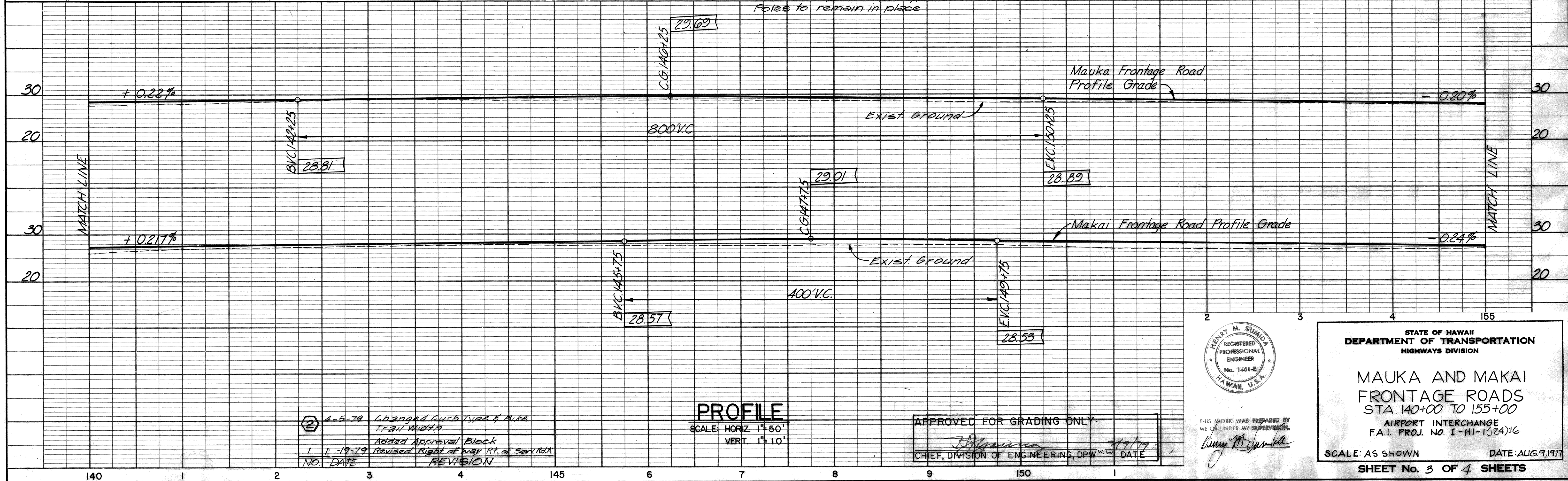
**SIDEWALK AND BIKE TRAIL CURVE DATA**

Note: For Catlin Drive intersection, horizontal and vertical alignments and additional Sidewalk and Bike Trail alignment details. See Shts. 11 & 15.



**PLAN**

SCALE 1" = 150'



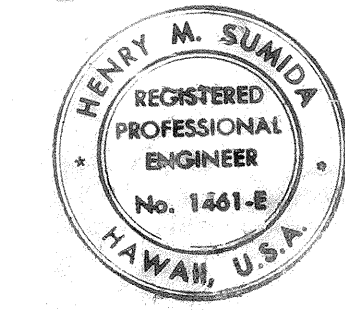
**PROFILE**

SCALE: HORIZ. 1" = 50'  
VERT. 1" = 10'

NO.	DATE	REVISION
2	4-5-79	Changed Curb Type & Rise Trail Width
1	1-19-79	Added Approval Block Revised Right of Way RT of Serv. Rd. A

APPROVED FOR GRADING ONLY

CHIEF, DIVISION OF ENGINEERING, DPW  
DATE: 7/9/79



STATE OF HAWAII  
DEPARTMENT OF TRANSPORTATION  
HIGHWAYS DIVISION

**MAUKA AND MAKAI  
FRONTAGE ROADS**  
STA. 140+00 TO 155+00  
AIRPORT INTERCHANGE  
F.A.I. PROJ. NO. I-HI-1(24)16

SCALE: AS SHOWN  
DATE: AUG. 9, 1977

**SHEET No. 3 OF 4 SHEETS**

PLAN SURVEYED, PLOTTED, CHECKED, REVISIONS CHECKED, DATE, BY, NO.

PROFILE SURVEYED, PLOTTED, CHECKED, REVISIONS CHECKED, DATE, BY, NO.



CURVE NO.	H-I @ STA.	%	Δ	R	T	LC
15	155+70	100' LT	16° 24' 46"	175.00'	25.24'	50.13'
16	158+00	108' LT	5° 09' 09"	1000.00'	44.99'	189.93'
16	159+50	99.50' LT	3° 14' 36"	1000.00'	28.31'	56.61'

FED. ROAD DIST. NO.	STATE	FED. AID PROJ. NO.	FISCAL YEAR	SHEET NO.	TOTAL SHEETS
HAWAII	HAW.	F-HI(124)16	1978	9	223

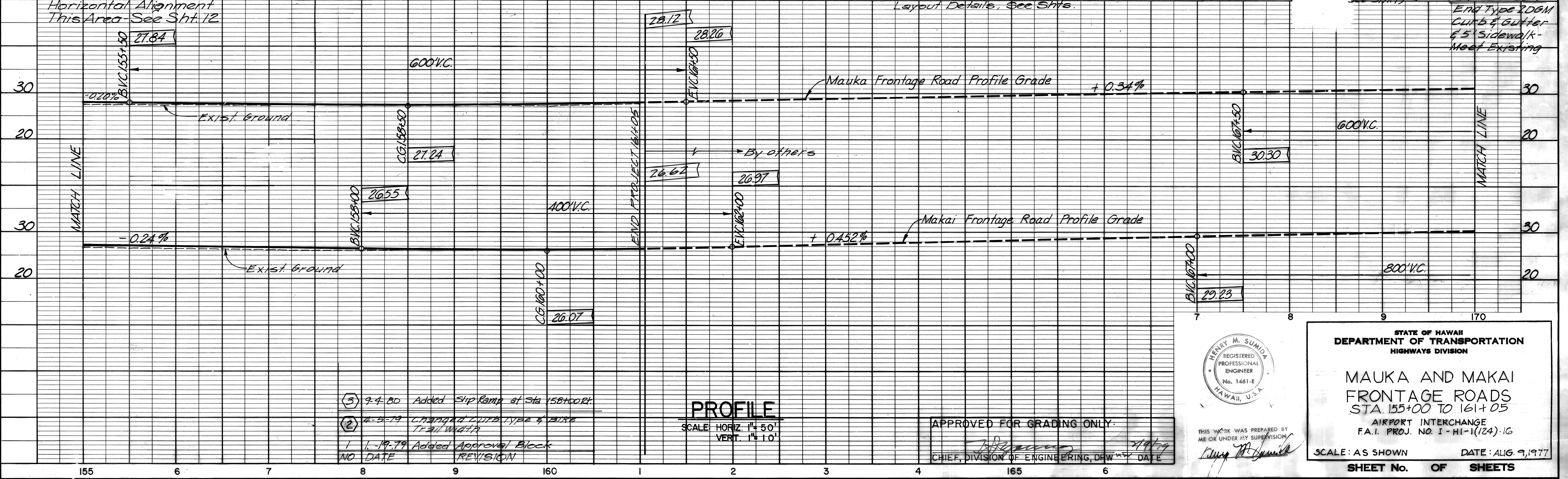
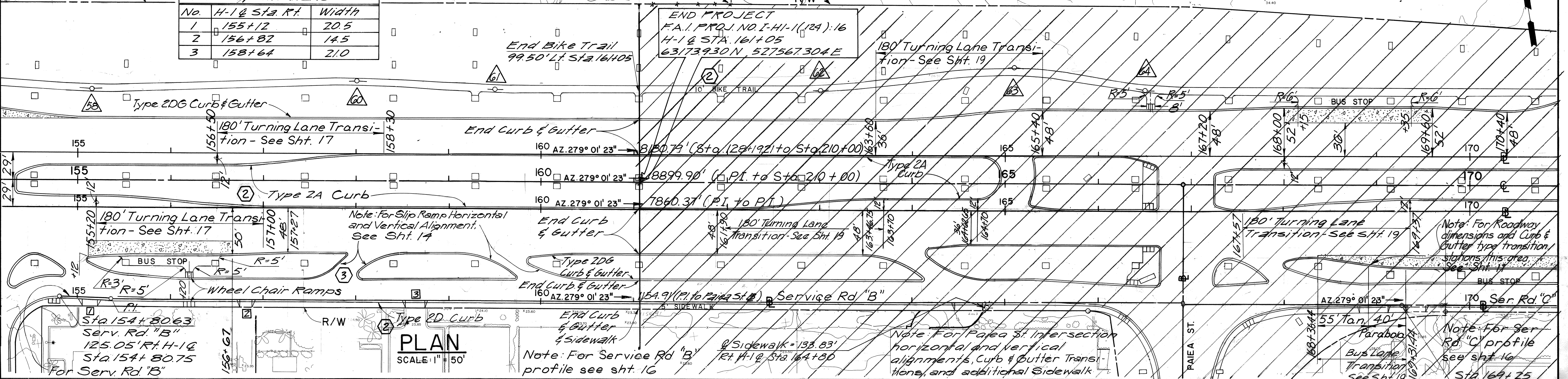
Existing 8' Chain Link Fence (To be relocated)  
Relocated 8' Chain Link Fence

**DRIVEWAY LOCATIONS**  
6-Inch Reinf. Conc. Drop Driveway Sht. No. 18

No.	H-I @ Sta. Rt.	Width
1	155+12	20.5
2	156+82	14.5
3	158+64	21.0

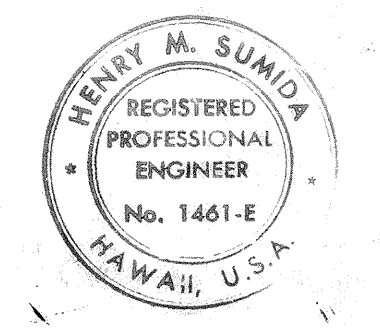
Connect Relocated Chain Link Fence to Exist Chain Link Fence H-I @ Sta. 162+00+

See Sht. 11 for Curb & Gutter Construction Notes in Paiea St. Intersection Area.



DATE	BY	PLAN
		SURVEYED
		ALIGNED
		NOTED
		REVISIONS

DATE	BY	PROFILE
		SURVEYED
		ALIGNED
		NOTED
		REVISIONS



STATE OF HAWAII  
DEPARTMENT OF TRANSPORTATION  
HIGHWAYS DIVISION

**MAUKA AND MAKAI  
FRONTAGE ROADS**  
STA. 155+00 TO 161+05  
AIRPORT INTERCHANGE  
F.A.I. PROJ. NO. I-HI-1(124):16

SCALE: AS SHOWN DATE: AUG. 9, 1977

SHEET No. OF SHEETS