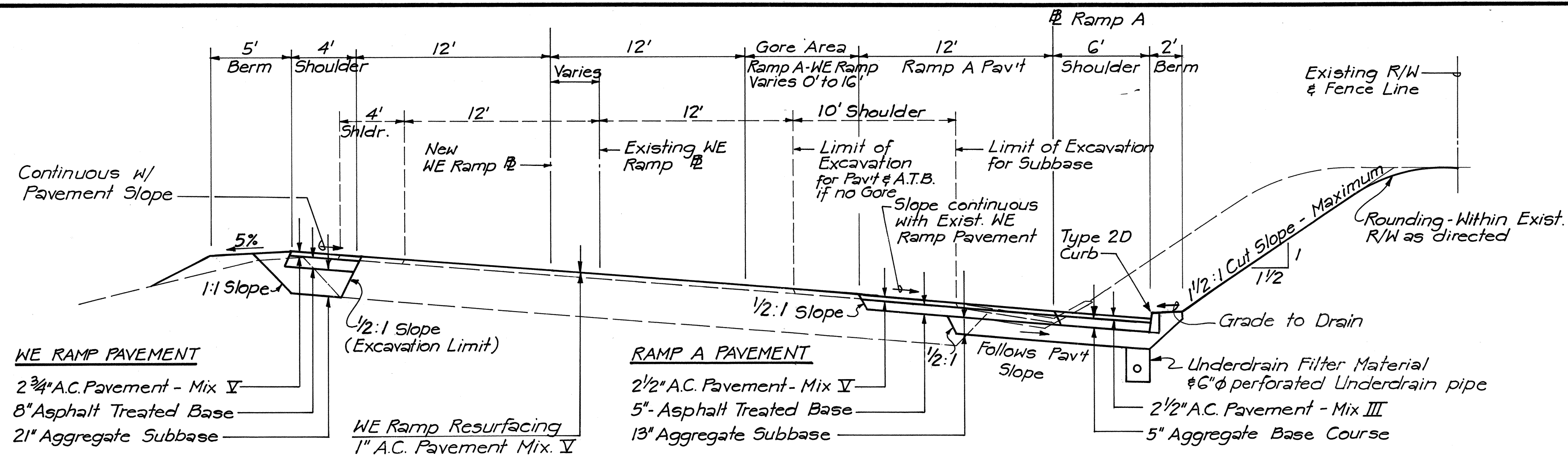
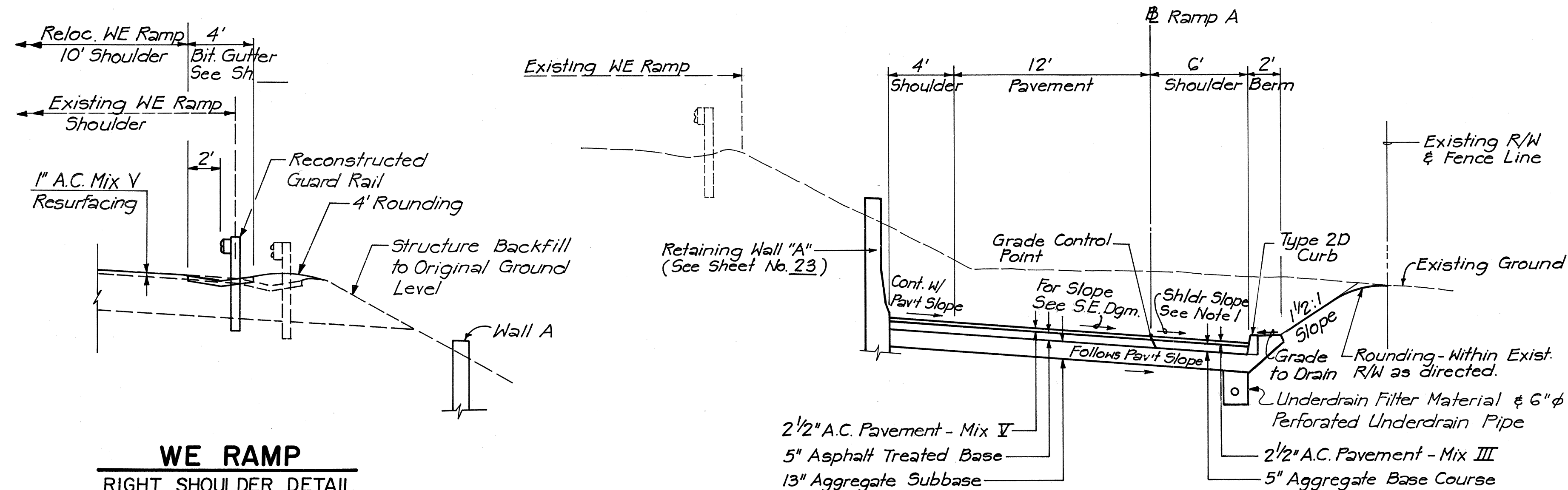


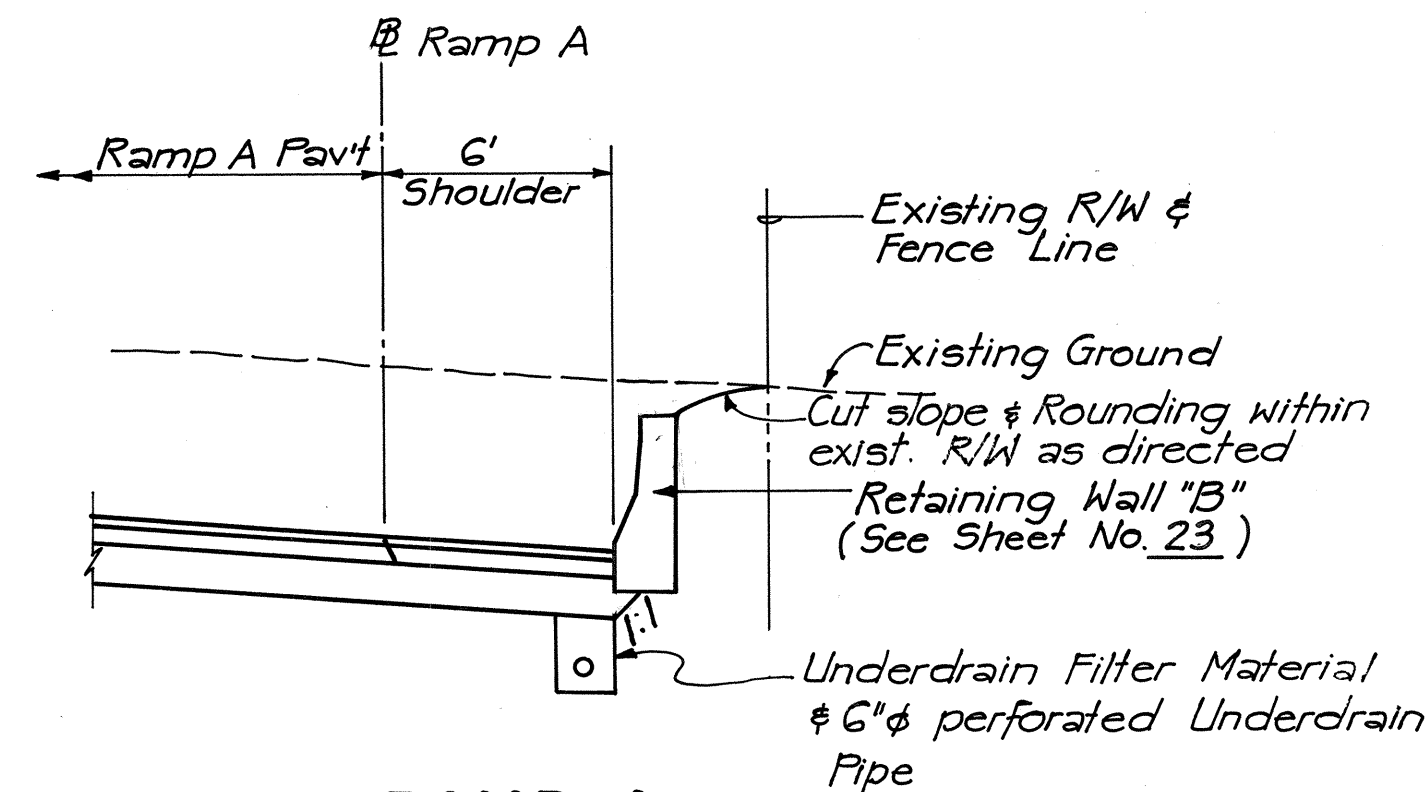
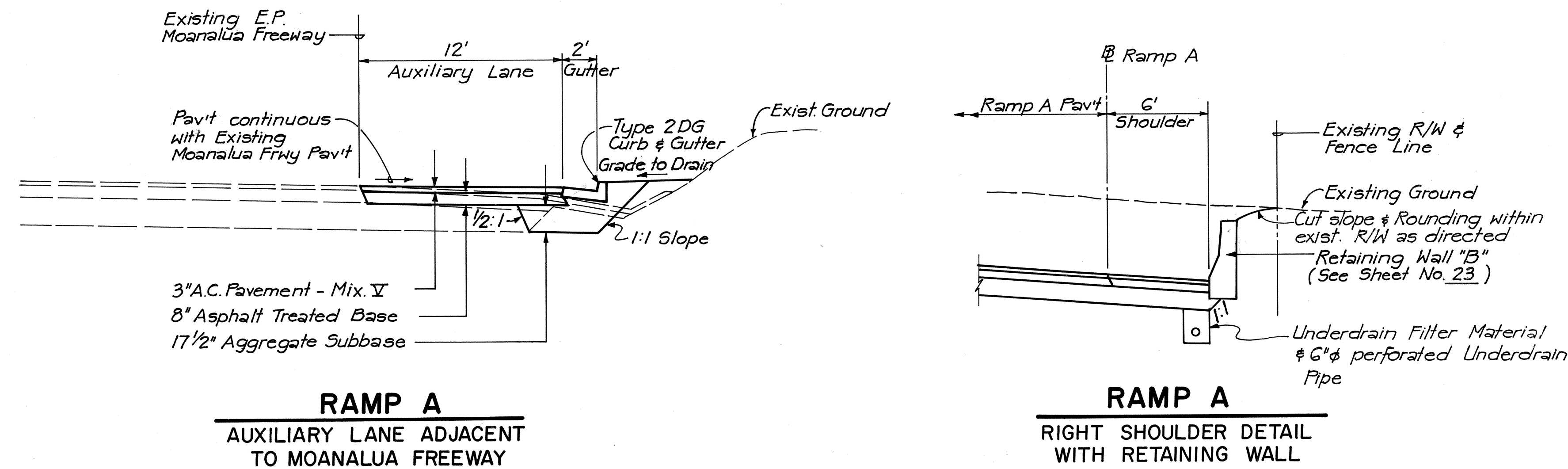
FED. ROAD DIST. NO.	STATE	FED. AID PROJ. NO.	FISCAL YEAR	SHEET NO.	TOTAL SHEETS
HAWAII	HAW.	I-HI-1(144):13	1977	3	52



TYPICAL SECTION - RELOCATED WE RAMP



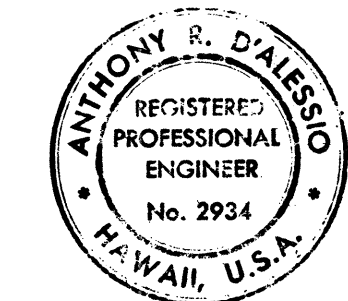
TYPICAL SECTION - RAMP A



NOTES

- Shoulder Cross-slope on Sections superelevated at more than 5% shall be the same as the pavement Cross-slope. Where pavement is superelevated at a rate less than 5%, shoulder slope on low side shall be 5%, and shoulder slope on the high side shall be the same as the pavement cross-slope.
- For Underdrain details see sheet No. 9.
- For Curb details see sheet No. 15.
- For Retaining Wall details see sheets No. 23, 24 & 25.
- Subbase and Subgrade cross-slope shall be the same as the pavement slope or shoulder slope above them.
- Aggregate surfaces to be paved with either Asphalt Concrete Pavement or Asphalt Treated Base shall receive a Prime Coat of MC-30 Liquid Asphalt. Payment for the Prime Coat will be made under item 408.0100.
- Pavement to be resurfaced shall receive a bituminous tack coat in accordance with Section 407 of the Specifications.

SURVEY PLOTTED BY	DATE
DRAWN BY	
TRACED BY	
QUANTITIES BY	
CHECKED BY	
NO.	



THIS WORK WAS PREPARED BY ME OR UNDER MY SUPERVISION.
[Signature]

STATE OF HAWAII
DEPARTMENT OF TRANSPORTATION
HIGHWAYS DIVISION

TYPICAL SECTIONS
HALAWA INTERCHANGE
PROJECT NO. I-HI-1(144):13
SCALE: 1" = 5'-0" DATE: JULY, 1977
SHEET NO. 1 OF 1 SHEETS