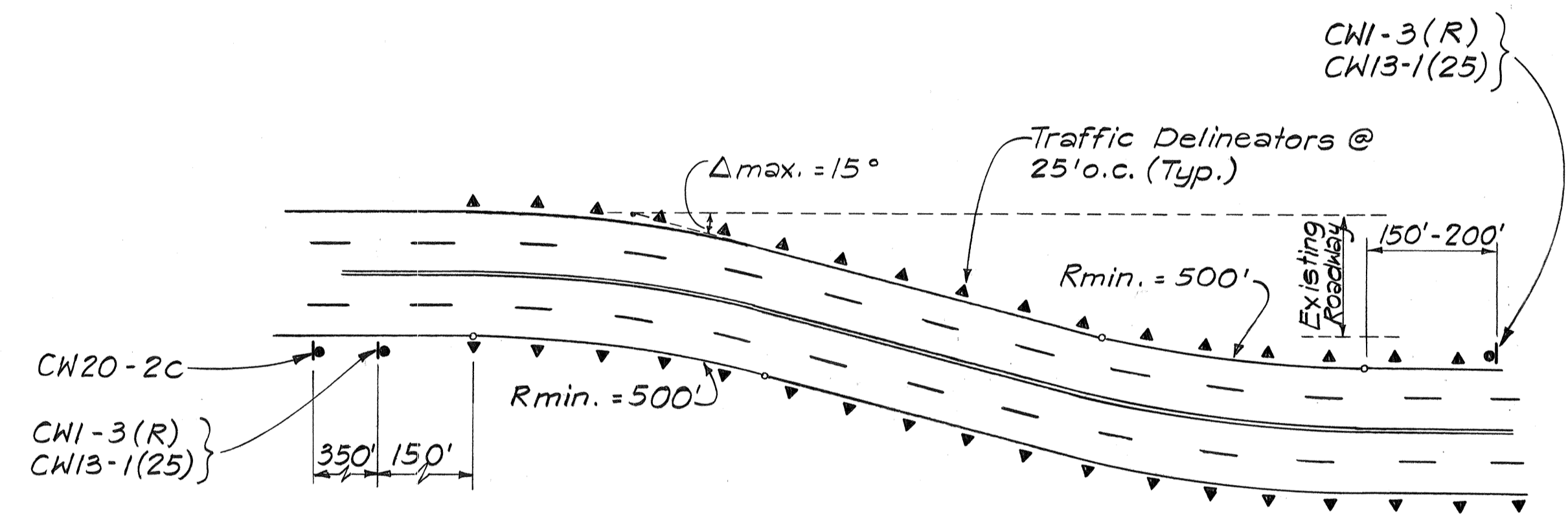
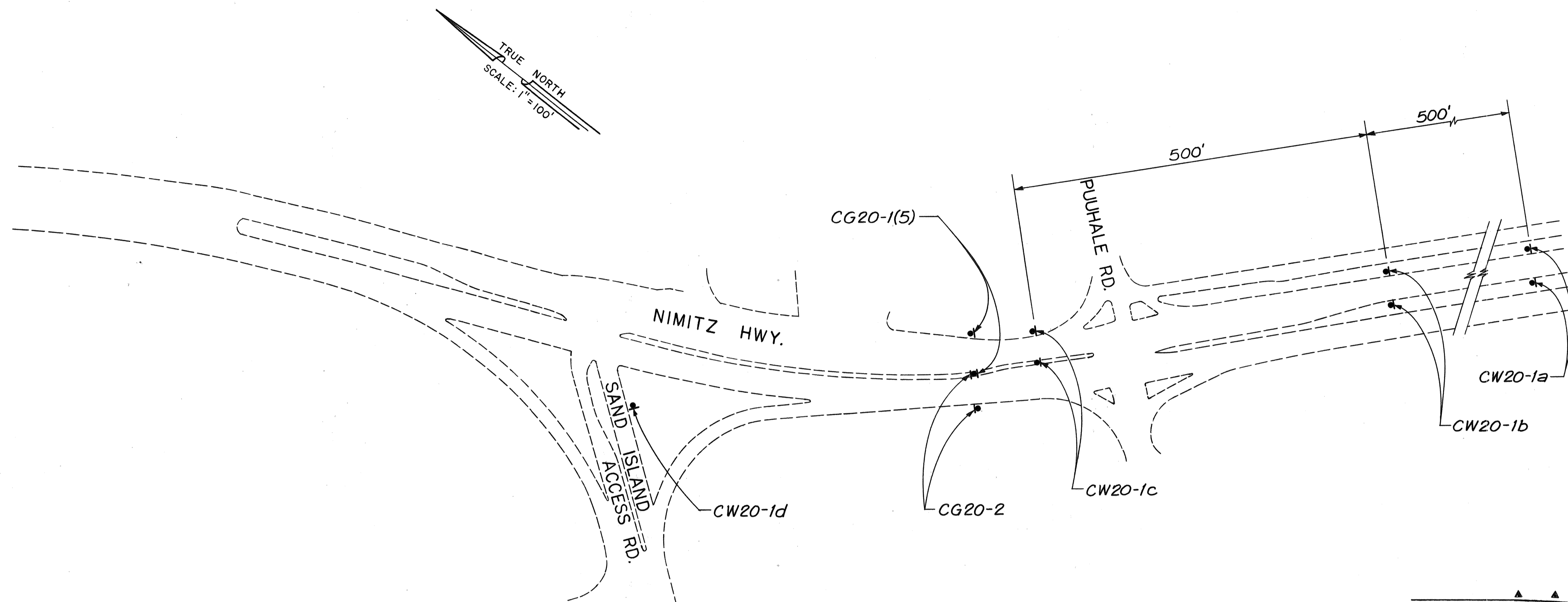


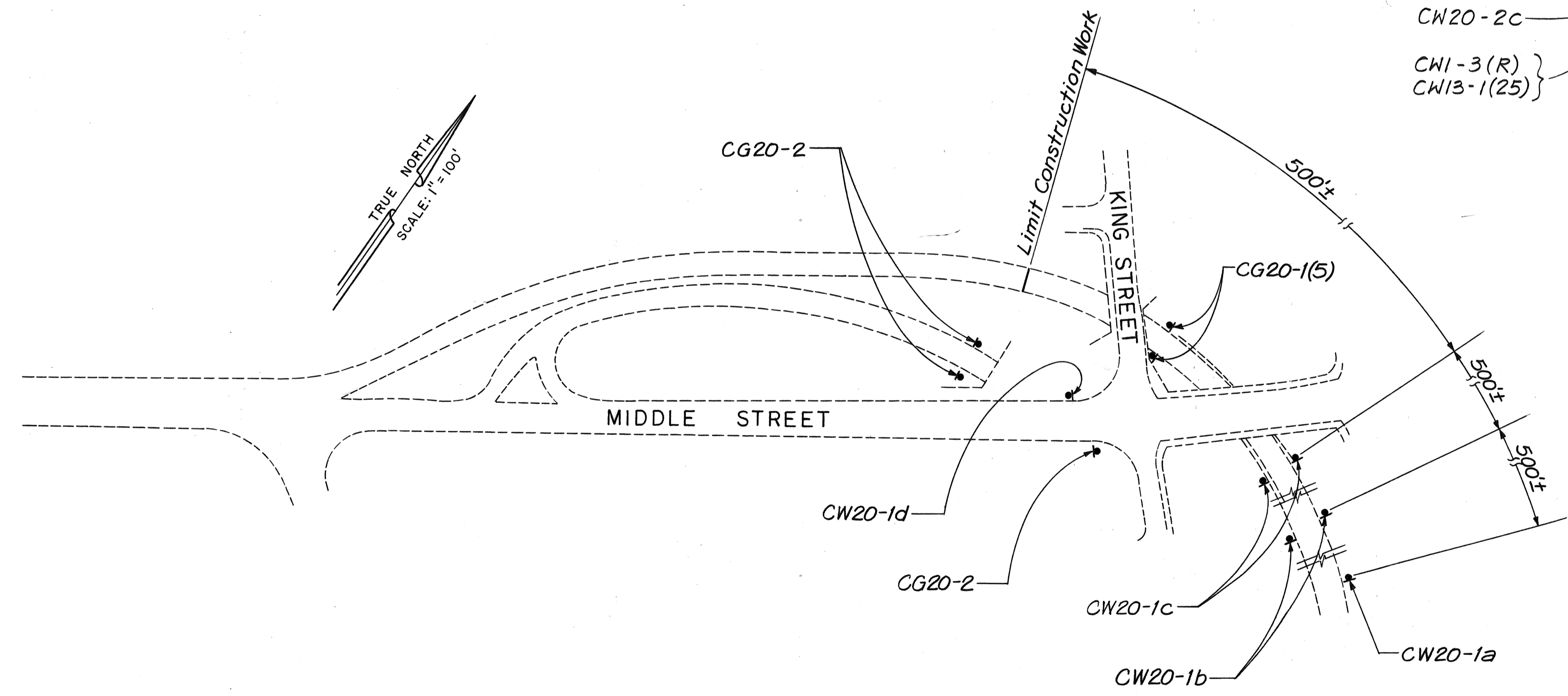
FED. ROAD DIST. NO.	STATE	FED. AID PROJ. NO.	FISCAL YEAR	SHEET NO.	TOTAL SHEETS
HAWAII	HAW.	I-HI-1(131):17	1977	116	394

NOTE:
For Signing Notes See Sheet No. 124.

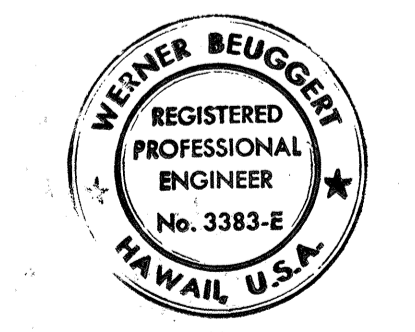


NOTE: Signing & pavement markings shall conform to the "Manual on Uniform Traffic Control Devices for Streets and Highways", 1971.

GUIDE FOR ALIGNMENT AND SIGNING OF LOCAL DETOURS WITHIN PROJECT LIMITS
N.T.S.



DATE: _____
ORIGINAL SURVEY PLOTTED BY: _____
PLAN DRAWN BY: _____
NOTE BOOK TRACED BY: _____
DESIGNED BY: _____
CHECKED BY: _____
No. _____



THIS WORK WAS PREPARED BY ME
OR UNDER MY SUPERVISION.
Werner Beuggert

STATE OF HAWAII
DEPARTMENT OF TRANSPORTATION
HIGHWAYS DIVISION

**CONSTRUCTION
SIGNING PLAN**

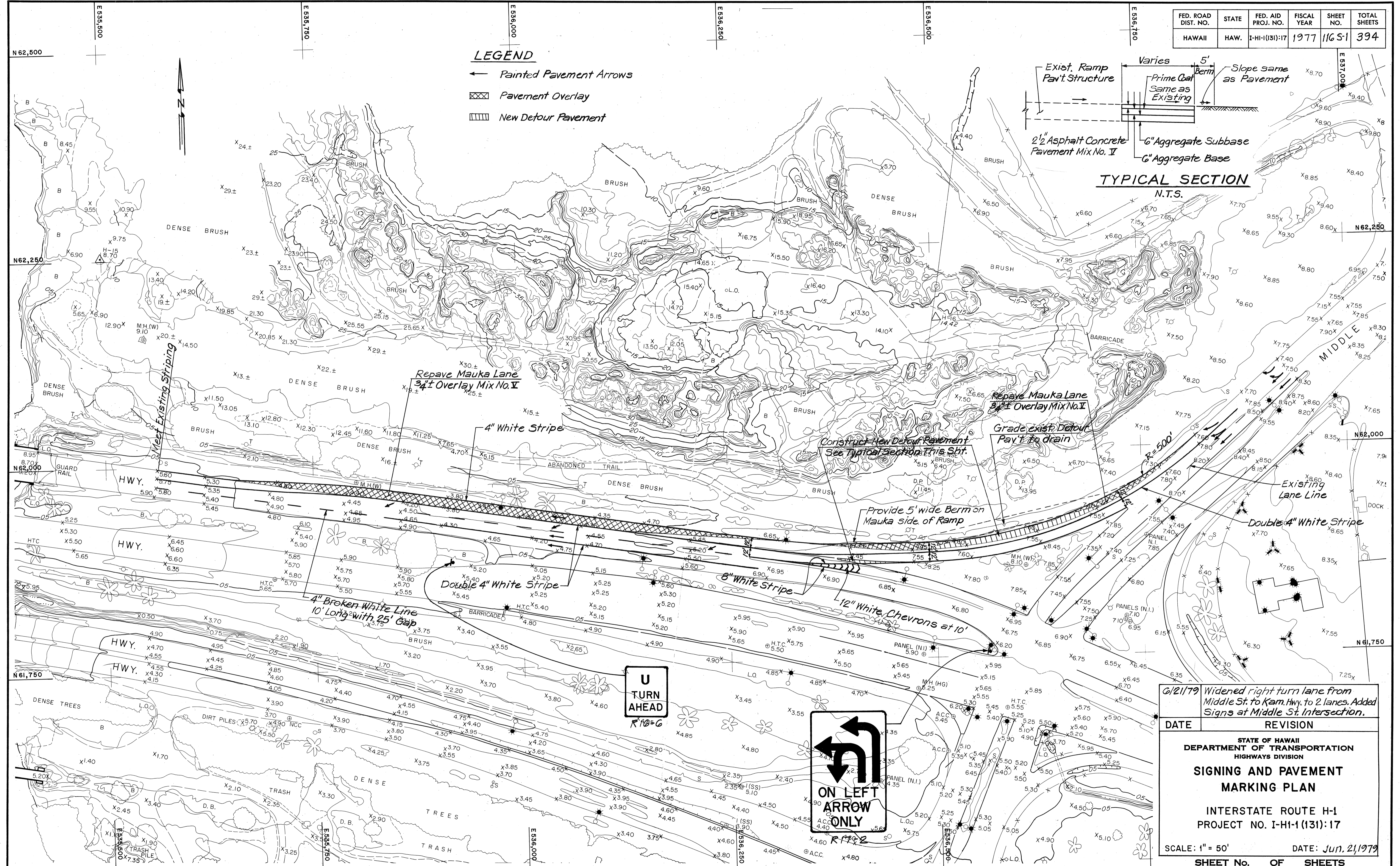
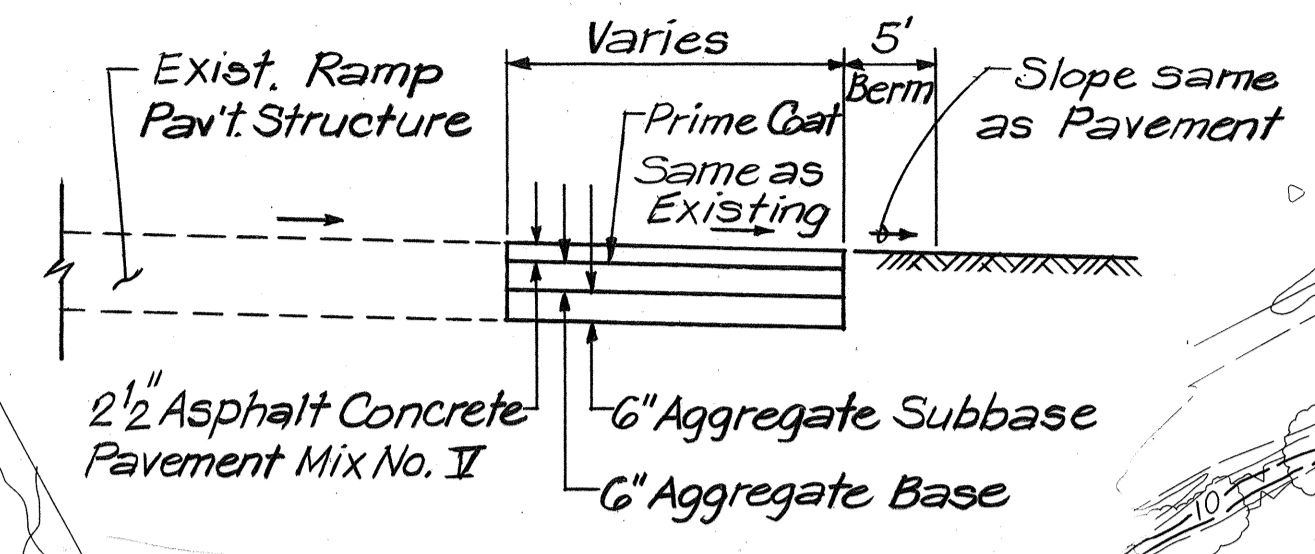
INTERSTATE ROUTE H-1
PROJECT NO. I-HI-1 (131):17

SCALE: 1" = 100' DATE: AUG. 31, 1977
SHEET NO. 1 OF 8 SHEETS

FED. ROAD DIST. NO.	STATE	FED. AID PROJ. NO.	FISCAL YEAR	SHEET NO.	TOTAL SHEETS
HAWAII	HAW.	I-HI-1(131):17	1977	116 S-1	394

LEGEND

- ← Painted Pavement Arrows
- ▨ Pavement Overlay
- ▤ New Detour Pavement



DATE	*****
SURVEY PLOTTED BY	
PLAN	
TRACED BY	
QUANTITIES BY	
CHECKED BY	
NO.	

6/21/79 Widened right turn lane from Middle St. to Kam. Hwy. to 2 lanes. Added Signs at Middle St. Intersection.

DATE	REVISION

STATE OF HAWAII
DEPARTMENT OF TRANSPORTATION
HIGHWAYS DIVISION

SIGNING AND PAVEMENT MARKING PLAN

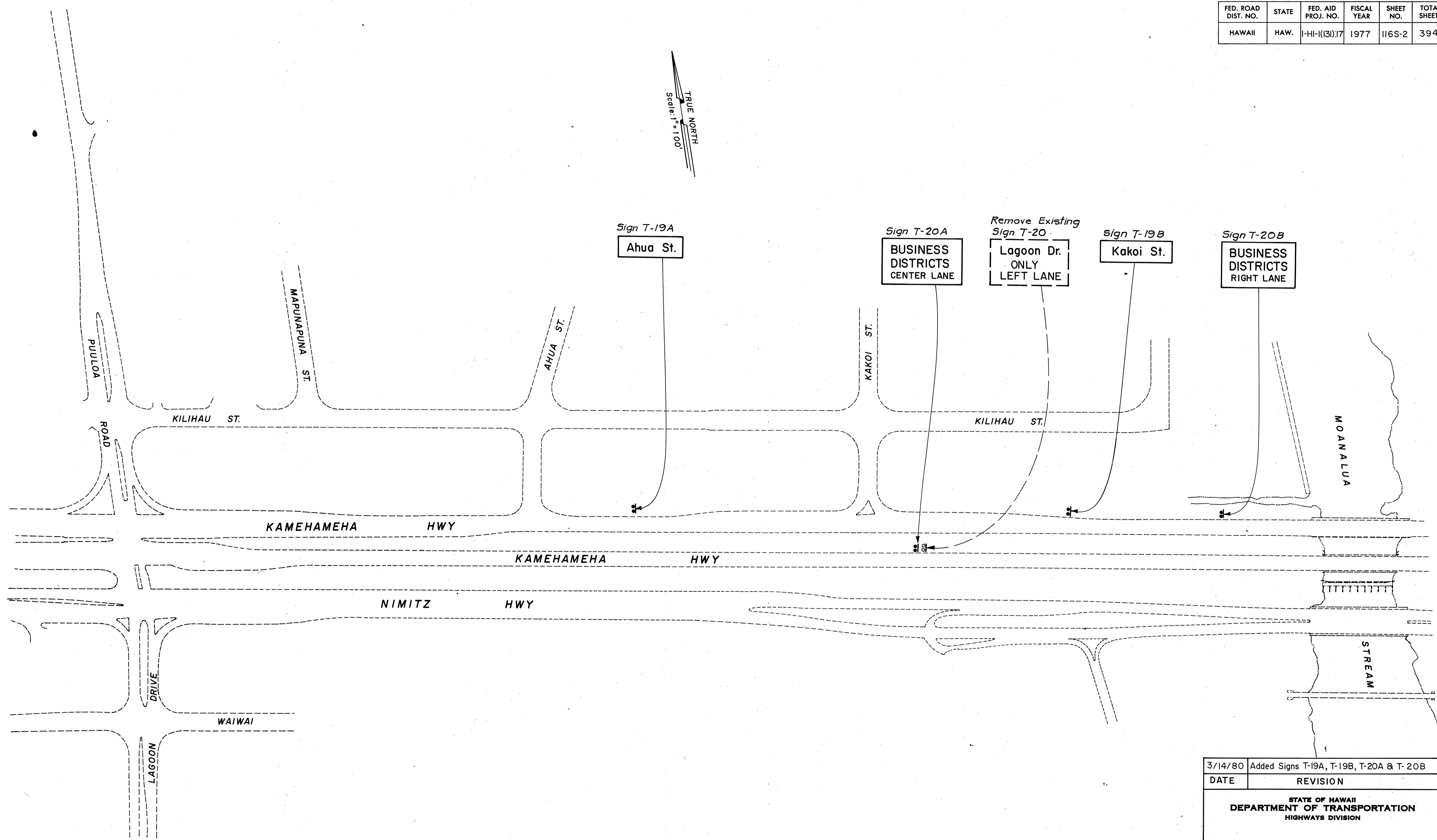
INTERSTATE ROUTE H-1
PROJECT NO. I-HI-1(131):17

SCALE: 1" = 50' DATE: Jun. 21, 1979

SHEET No. OF SHEETS

FED. ROAD DIST. NO.	STATE	FED. AID PROJ. NO.	FISCAL YEAR	SHEET NO.	TOTAL SHEETS
HAWAII	HAW.	1-HI-(131):17	1977	116S-2	394

TRUE NORTH
Scale: 1" = 100'

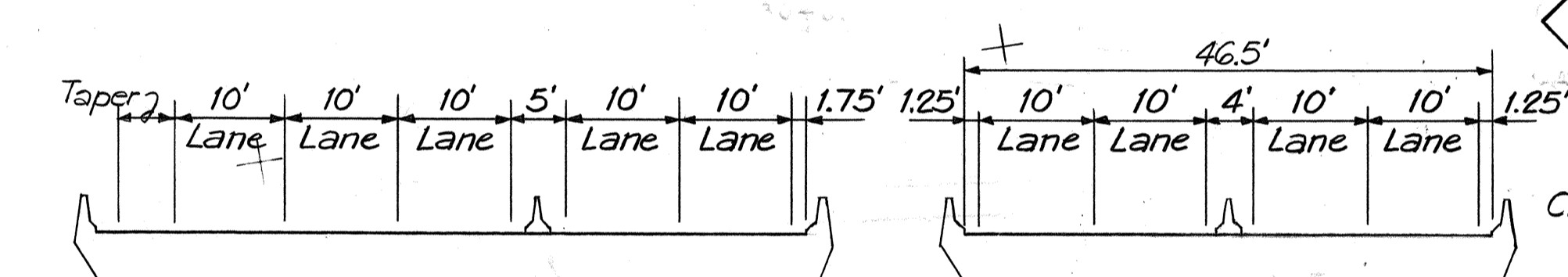
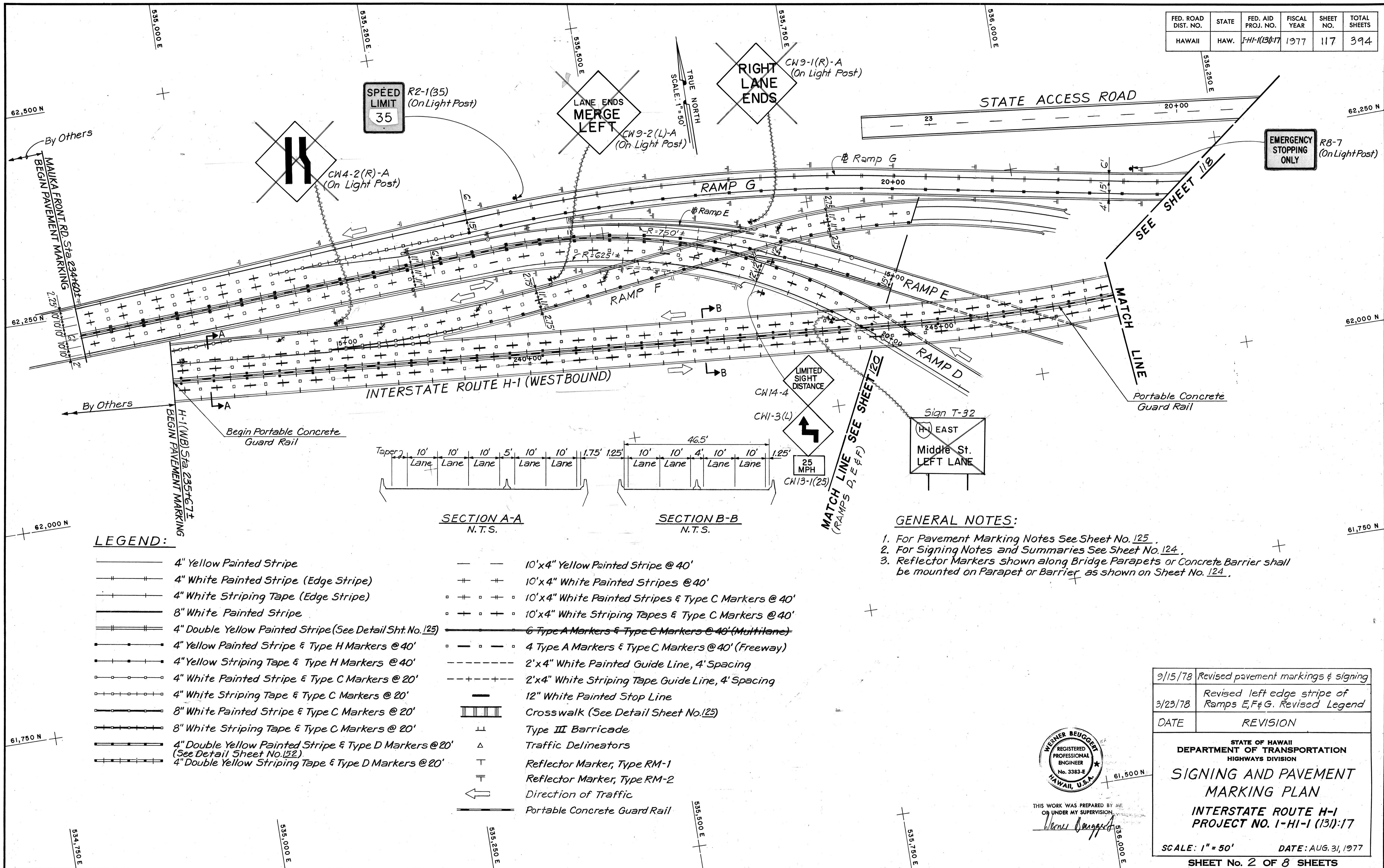


ORIGINAL PLAN	DATE
DESIGNED BY	
TRACED BY	
NOTED BY	
CHECKED BY	
QUANTITIES BY	
NO.	

3/14/80	Added Signs T-19A, T-19B, T-20A & T-20B
DATE	REVISION
STATE OF HAWAII DEPARTMENT OF TRANSPORTATION HIGHWAYS DIVISION	
SIGNING PLAN INTERSTATE ROUTE H-1 PROJECT NO. 1-HI-1 (131):17	
SCALE: 1" = 100'	DATE: 3/14/80
SHEET No. 1B OF 8 SHEETS	

C.O.116 S-2

FED. ROAD DIST. NO.	STATE	FED. AID PROJ. NO.	FISCAL YEAR	SHEET NO.	TOTAL SHEETS
HAWAII	HAW.	I-HI-1(131):17	1977	117	394



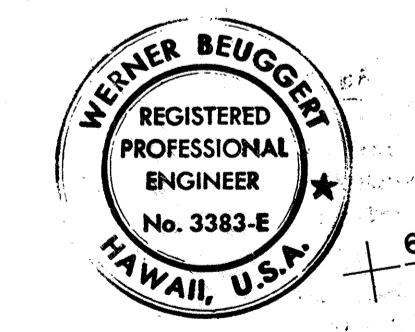
LEGEND:

- | | | | |
|---------------|---|-------------|---|
| — | 4" Yellow Painted Stripe | — — | 10'x4" Yellow Painted Stripe @ 40' |
| — # — | 4" White Painted Stripe (Edge Stripe) | + + | 10'x4" White Painted Stripes @ 40' |
| — + — | 4" White Striping Tape (Edge Stripe) | o + o + o | 10'x4" White Painted Stripes & Type C Markers @ 40' |
| — — — | 8" White Painted Stripe | o + + o + + | 10'x4" White Striping Tapes & Type C Markers @ 40' |
| — # — # — | 4" Double Yellow Painted Stripe (See Detail Sht. No. 125) | — o — o — o | 6 Type A Markers & Type C Markers @ 40' (Multilane) |
| — . . . | 4" Yellow Painted Stripe & Type H Markers @ 40' | o — o — o | 4 Type A Markers & Type C Markers @ 40' (Freeway) |
| — + . . . | 4" Yellow Striping Tape & Type H Markers @ 40' | — — — — — | 2'x4" White Painted Guide Line, 4' Spacing |
| — o — o — o | 4" White Painted Stripe & Type C Markers @ 20' | — + + — — | 2'x4" White Striping Tape Guide Line, 4' Spacing |
| — + + — o — o | 4" White Striping Tape & Type C Markers @ 20' | — — — — — | 12" White Painted Stop Line |
| — o — o — o | 8" White Painted Stripe & Type C Markers @ 20' | — — — — — | Crosswalk (See Detail Sheet No. 125) |
| — + + — o — o | 8" White Striping Tape & Type C Markers @ 20' | — — — — — | Type III Barricade |
| — # — # — | 4" Double Yellow Painted Stripe & Type D Markers @ 20' (See Detail Sheet No. 152) | — — — — — | Traffic Delineators |
| — + + — o — o | 4" Double Yellow Striping Tape & Type D Markers @ 20' | — — — — — | Reflector Marker, Type RM-1 |
| | | — — — — — | Reflector Marker, Type RM-2 |
| | | — — — — — | Direction of Traffic |
| | | — — — — — | Portable Concrete Guard Rail |

GENERAL NOTES:

- For Pavement Marking Notes See Sheet No. 125.
- For Signing Notes and Summaries See Sheet No. 124.
- Reflector Markers shown along Bridge Parapets or Concrete Barrier shall be mounted on Parapet or Barrier as shown on Sheet No. 124.

DATE	
SURVEY PLOTTED BY	
DRAWN BY	
DESIGNED BY	
CHECKED BY	
ORIGINAL PLAN No.	
NOTE BOOK No.	



THIS WORK WAS PREPARED BY ME OR UNDER MY SUPERVISION

Werner Beuger

DATE	REVISION
9/15/78	Revised pavement markings & signing
3/23/78	Revised left edge stripe of Ramps E, F & G. Revised Legend

STATE OF HAWAII
DEPARTMENT OF TRANSPORTATION
HIGHWAYS DIVISION

SIGNING AND PAVEMENT MARKING PLAN

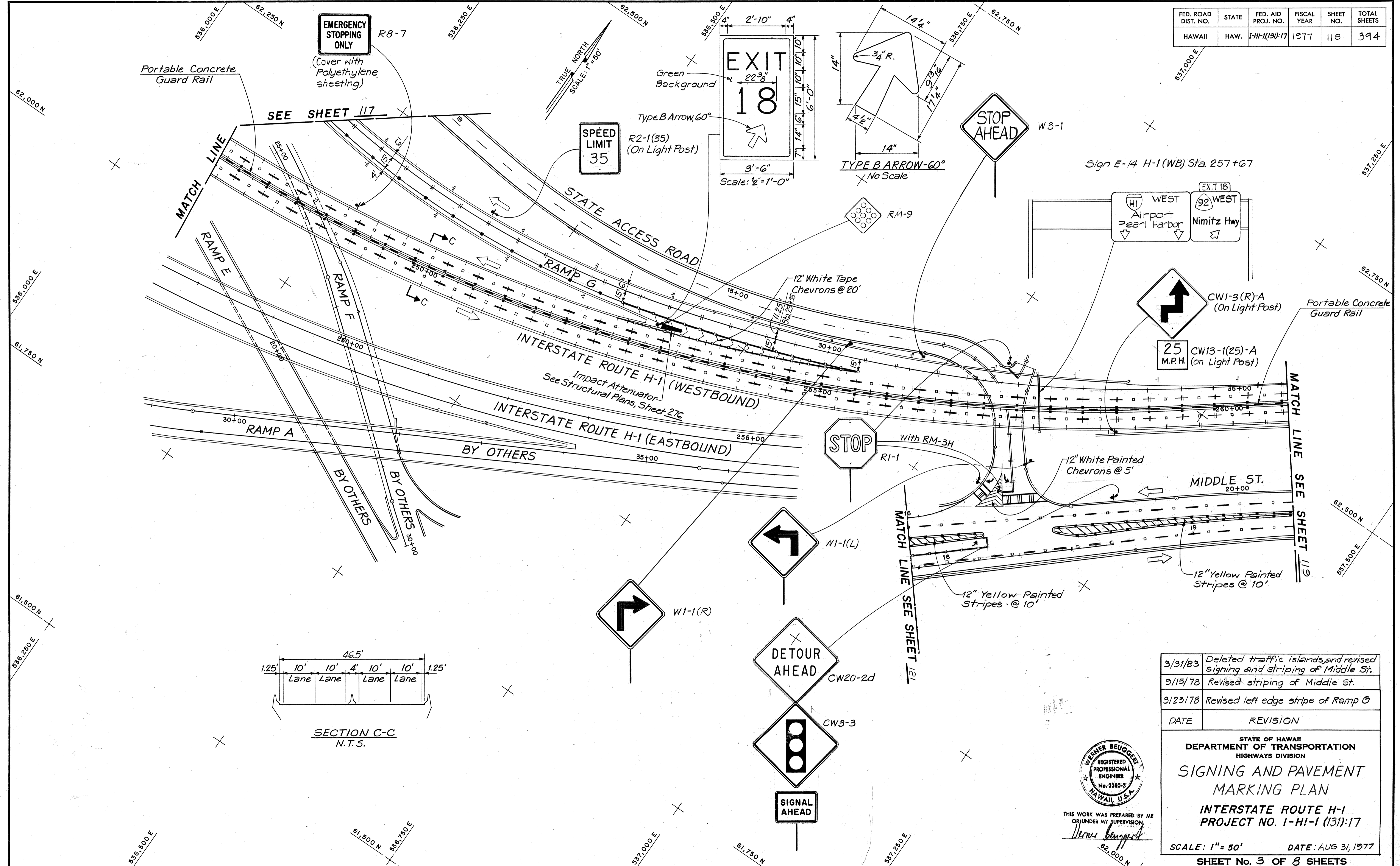
**INTERSTATE ROUTE H-1
PROJECT NO. 1-HI-1 (131):17**

SCALE: 1" = 50' DATE: AUG. 31, 1977

SHEET No. 2 OF 8 SHEETS

C.O. ADDI 17

FED. ROAD DIST. NO.	STATE	FED. AID PROJ. NO.	FISCAL YEAR	SHEET NO.	TOTAL SHEETS
HAWAII	HAW.	1-HI-1(131)-17	1977	118	394



DATE	
SURVEY PLOTTED BY	
DRAWN BY	
DESIGNED BY	
CHECKED BY	
ORIGINAL PLAN	
NOTE BOOK	
No.	

DATE	REVISION
3/31/83	Deleted traffic islands, and revised signing and striping of Middle St.
3/15/78	Revised striping of Middle St.
3/23/78	Revised left edge stripe of Ramp G

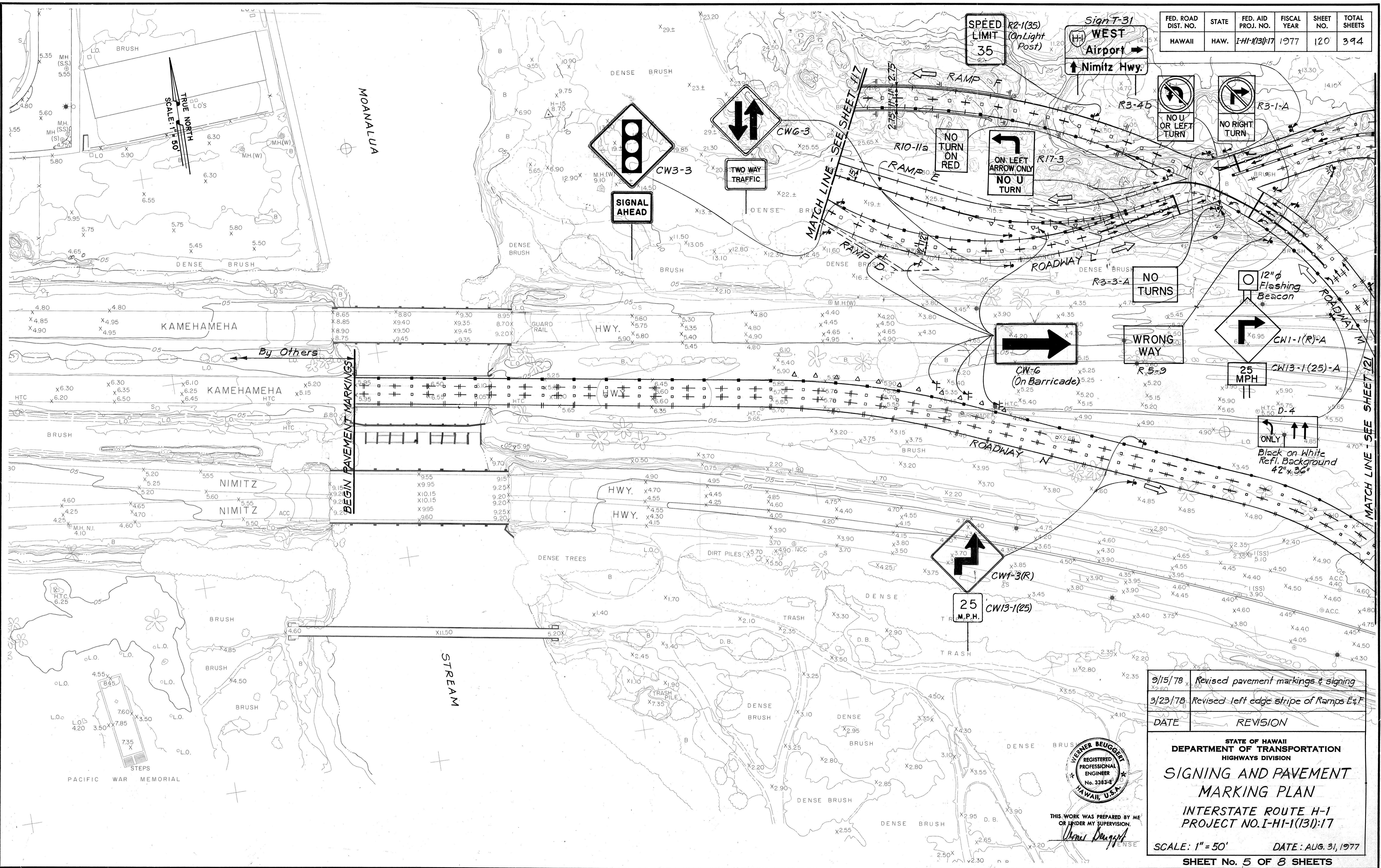


THIS WORK WAS PREPARED BY ME OR UNDER MY SUPERVISION.
Werner Beugger

STATE OF HAWAII
 DEPARTMENT OF TRANSPORTATION
 HIGHWAYS DIVISION
SIGNING AND PAVEMENT MARKING PLAN
 INTERSTATE ROUTE H-1
 PROJECT NO. 1-HI-1 (131)-17
 SCALE: 1" = 50' DATE: AUG. 31, 1977
 SHEET No. 3 OF 8 SHEETS

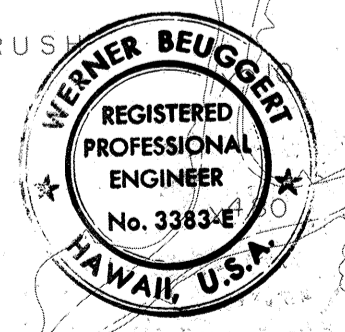
C.O.ADD.118

FED. ROAD DIST. NO.	STATE	FED. AID PROJ. NO.	FISCAL YEAR	SHEET NO.	TOTAL SHEETS
HAWAII	HAW.	I-HI-1(131)-17	1977	120	394



DATE	_____
ORIGINAL PLAN	_____
DESIGNED BY	_____
QUANTITIES BY	_____
CHECKED BY	_____
NO.	_____

9/15/78	Revised pavement markings & signing
3/23/78	Revised left edge stripe of Ramps E & F
DATE	REVISION



STATE OF HAWAII
DEPARTMENT OF TRANSPORTATION
HIGHWAYS DIVISION

SIGNING AND PAVEMENT MARKING PLAN

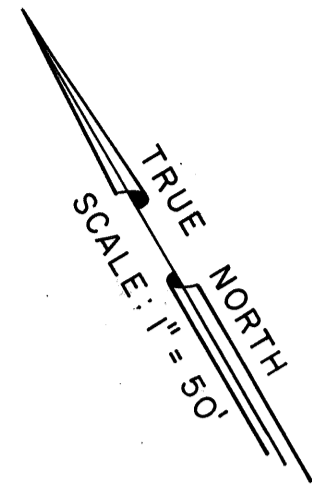
INTERSTATE ROUTE H-1
PROJECT NO. I-HI-1(131)-17

SCALE: 1" = 50' DATE: AUG. 31, 1977

SHEET No. 5 OF 8 SHEETS

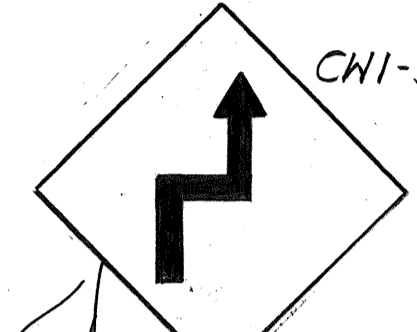
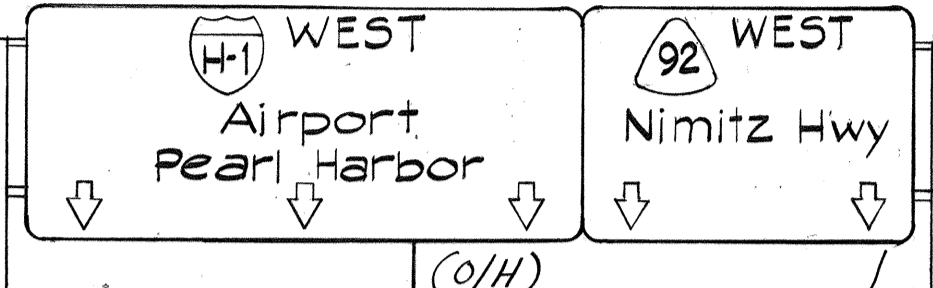
C.O.ADD.120

FED. ROAD DIST. NO.	STATE	FED. AID PROJ. NO.	FISCAL YEAR	SHEET NO.	TOTAL SHEETS
HAWAII	HAW.	I-HI-1(131):17	1977	122	394



N.I.C.

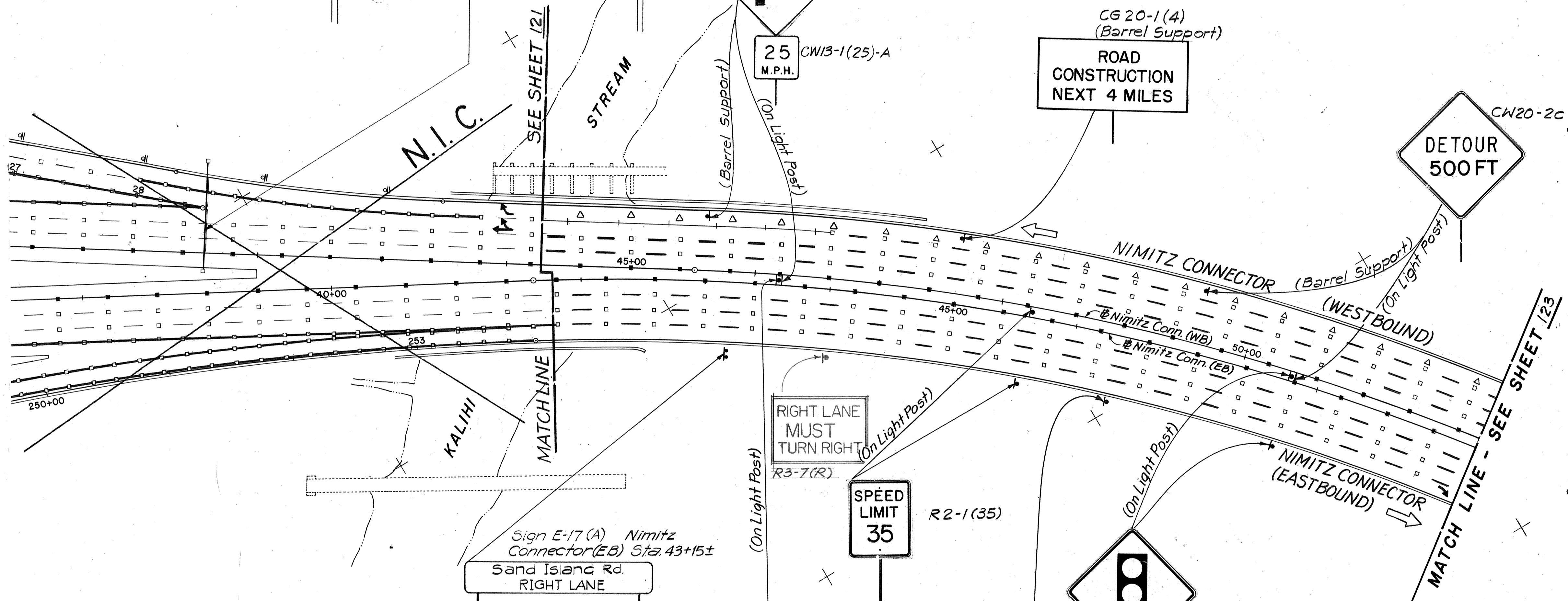
Sign E-36 Nimitz Connector (WB) Sta. 41+55



25 M.P.H. CWB-1(25)-A (On Light Post)

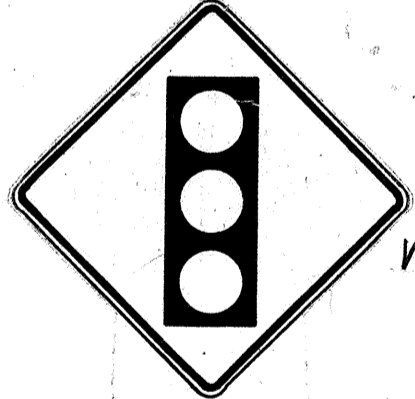
ROAD CONSTRUCTION NEXT 4 MILES

CG 20-1 (4) (Barrel Support)



RIGHT LANE MUST TURN RIGHT (On Light Post) R3-7(R)

SPEED LIMIT 35 R2-1(35) (On Light Post)



SIGNAL AHEAD

Sign E-17 (A) Nimitz Connector (EB) Sta. 43+15± Sand Island Rd. RIGHT LANE

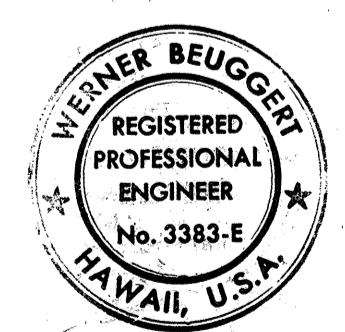
EAST M3-2



State Route Marker Assembly

END CONSTRUCTION CG 20-2 (Barrel Support)

SURVEY PLOTTED BY	DATE
DRAWN BY	
TRACED BY	
DESIGNED BY	
CHECKED BY	
NO.	



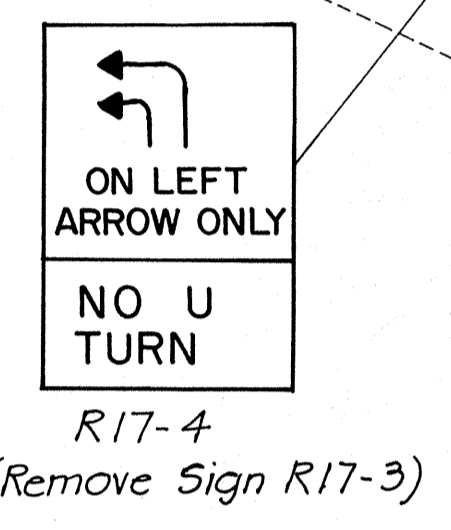
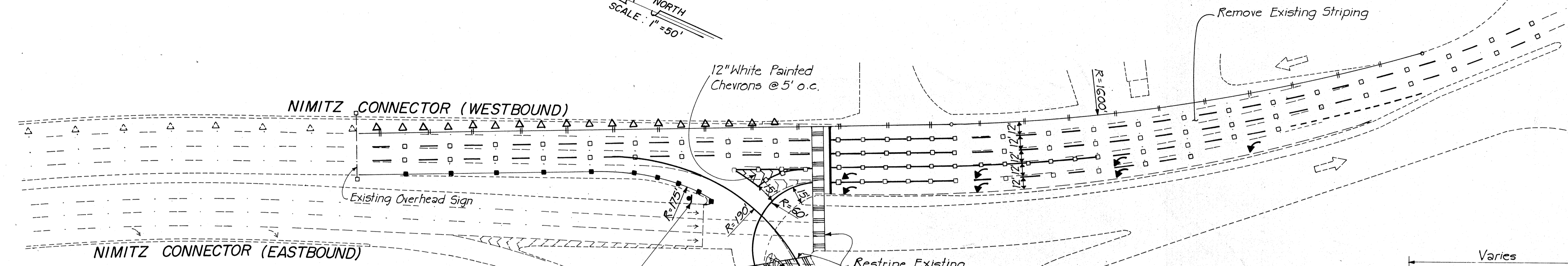
THIS WORK WAS PREPARED BY ME OR UNDER MY SUPERVISION.
Werner Beuggert

9/15/78	Revised pavement markings & signing
DATE	REVISION
STATE OF HAWAII DEPARTMENT OF TRANSPORTATION HIGHWAYS DIVISION	
SIGNING AND PAVEMENT MARKING PLAN	
INTERSTATE ROUTE H-1 PROJECT NO. 1-HI-1 (131):17	
SCALE: 1" = 50'	DATE: AUG. 31, 1977
SHEET NO. 7 OF 8 SHEETS	

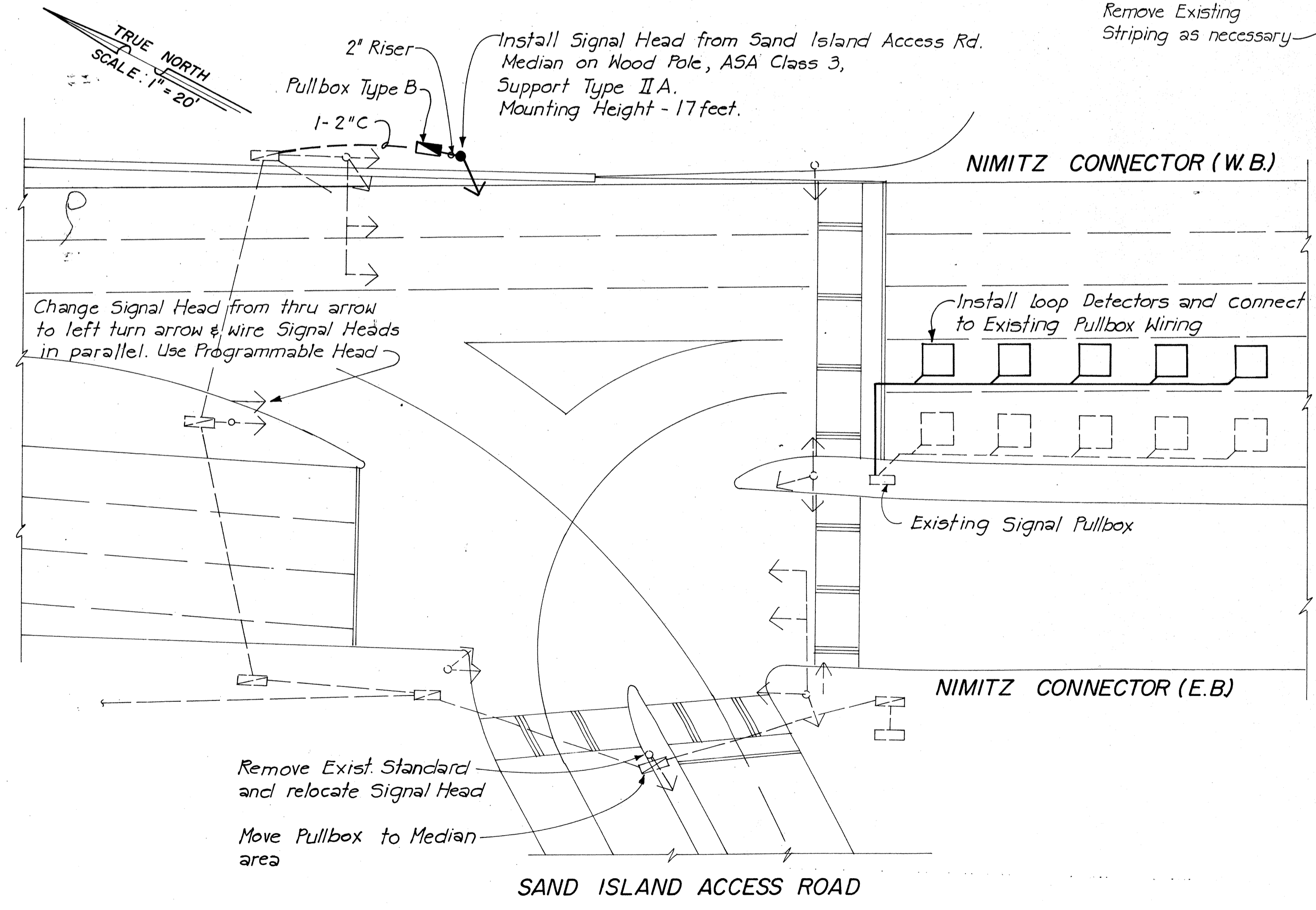
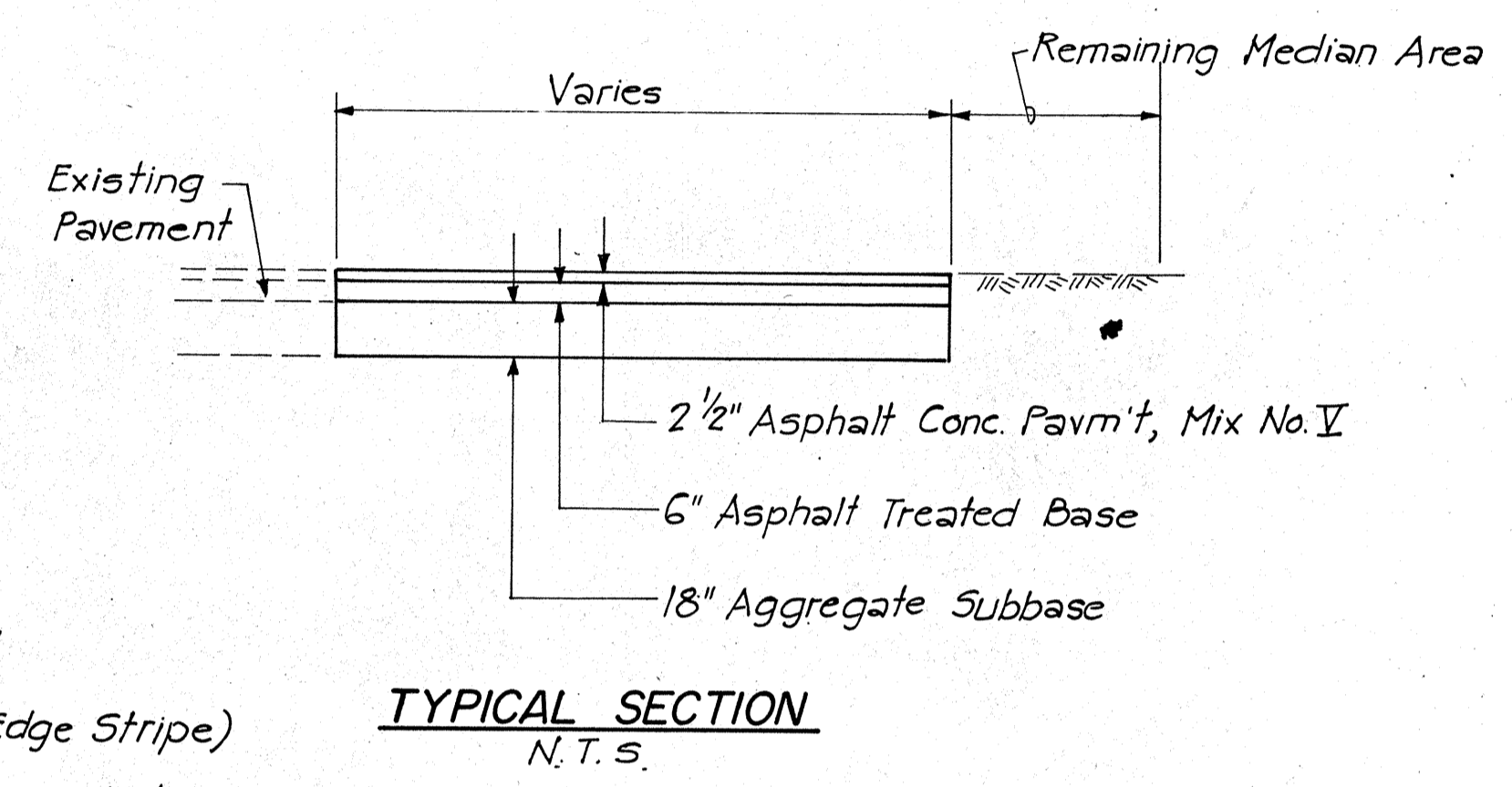
C.O.122

FED. ROAD DIST. NO.	STATE	FED. AID PROJ. NO.	FISCAL YEAR	SHEET NO.	TOTAL SHEETS
HAWAII	HAW.	I-HI-1(131)-17	1983	CO 12351	394

TRUE NORTH
SCALE: 1" = 50'



- LEGEND**
- 4" Yellow Painted Stripe & Type H Markers @ 40'
 - 8" White Painted Stripe
 - 8" White Painted Stripe & Type C Markers @ 20'
 - 4" White Painted Stripe (Edge Stripe)
 - 4 Type A Markers & Type C Markers @ 40' (Freeway)
 - 12" White Painted Stop Line
 - Cross Walk
 - 2' x 4" White Painted Guide Line, 4' Spacing
 - Relocated Traffic Delineators (Attached to Pavement by Epoxy)



SURVEY PLOTTED BY	DATE
DRAWN BY	
DESIGNED BY	
QUANTITIES BY	
CHECKED BY	
ORIGINAL PLAN No.	

4/5/83	Sheet added to Contract Plan Set for providing 2 left turn lanes from Nimitz Hwy. Westbound to Sand Island Access Rd.
DATE	REVISION
STATE OF HAWAII DEPARTMENT OF TRANSPORTATION HIGHWAYS DIVISION	
ADJUSTMENTS TO INTERSECTION OF SAND ISLAND ACCESS RD. & NIMITZ HWY.	
INTERSTATE ROUTE H-1 PROJECT NO. I-HI-1(131)-17	
SCALE: AS SHOWN	DATE: 4/5/83
SHEET NO. OF SHEETS	

C.O. 1235-1

FED. ROAD DIST. NO.	STATE	FED. AID PROJ. NO.	FISCAL YEAR	SHEET NO.	TOTAL SHEETS
HAWAII	HAW.	I-HI-1(13):17	1983	CO 1235-2	394



BEGIN PROJECT

END PROJECT

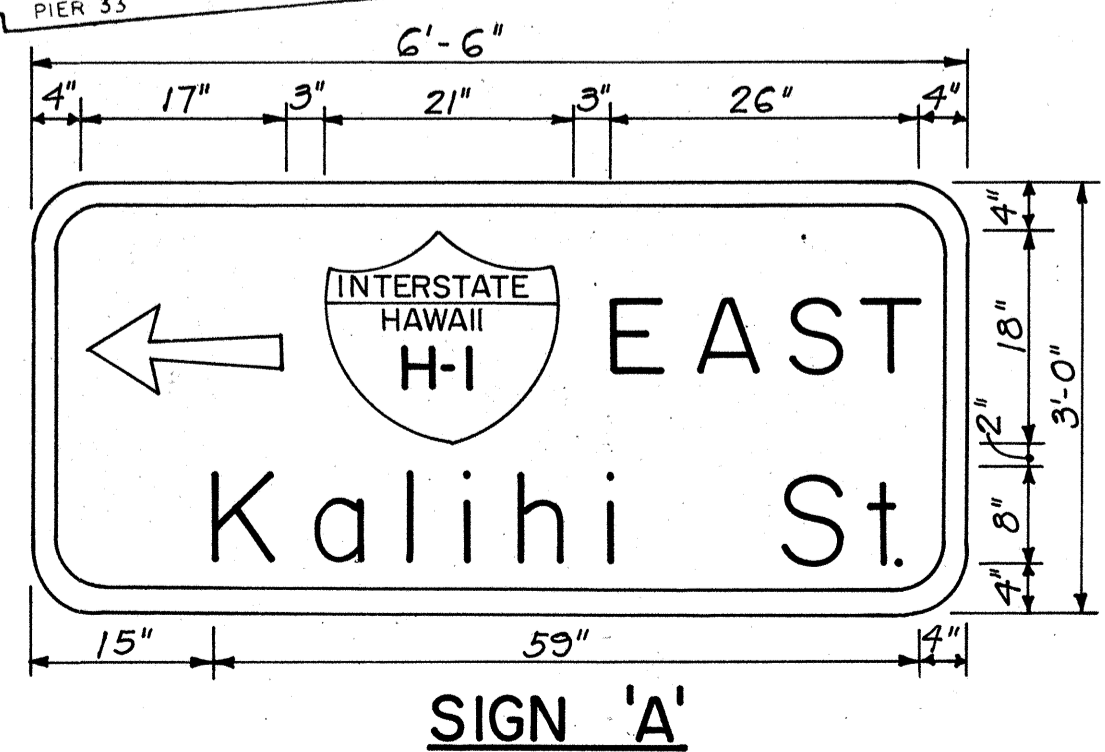
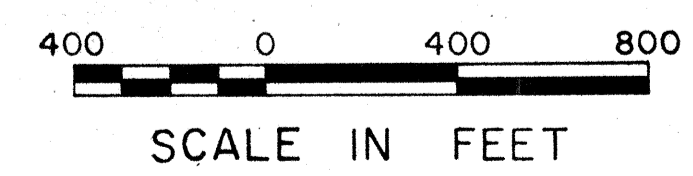
SURVEY PLOTTED BY	DATE
DRAWN BY	
TRACED BY	
NOTED BY	
CHECKED BY	
NO.	

TO M4-5
EAST M3-2
INTERSTATE HAWAII H-1 IM-1(i)
↑ M6-3 or M6-1 (See Note 1)

TRAILBLAZER SIGN ASSEMBLY

Sign 'A'
Install in median area before left turn taper and in front of median trees. Use break away sign supports with post size 3I 5.7 and concrete footings.

- NOTES:
- All Trailblazers shall be as shown except the Sign located at Nimitz Hwy/Kalihi St. Intersection. There Sign M6-3 shall be replaced by a M6-1 pointing left.
 - Exact locations shall be determined by the Engineer.



4/5/83	Sheet added to Contract Set for providing Trailblazer Signs to H-1 East because Middle St. Connection closed.
DATE	REVISION
STATE OF HAWAII DEPARTMENT OF TRANSPORTATION HIGHWAYS DIVISION	
H-1 TRAILBLAZERS FROM KEEHI INTERCHANGE TO KALIHI STREET ON RAMP	
INTERSTATE ROUTE H-1 PROJECT NO. I-HI-1(13):17	
DATE: 4/5/83	
SHEET No. 1 OF 1 SHEETS	

C.O.1235-2