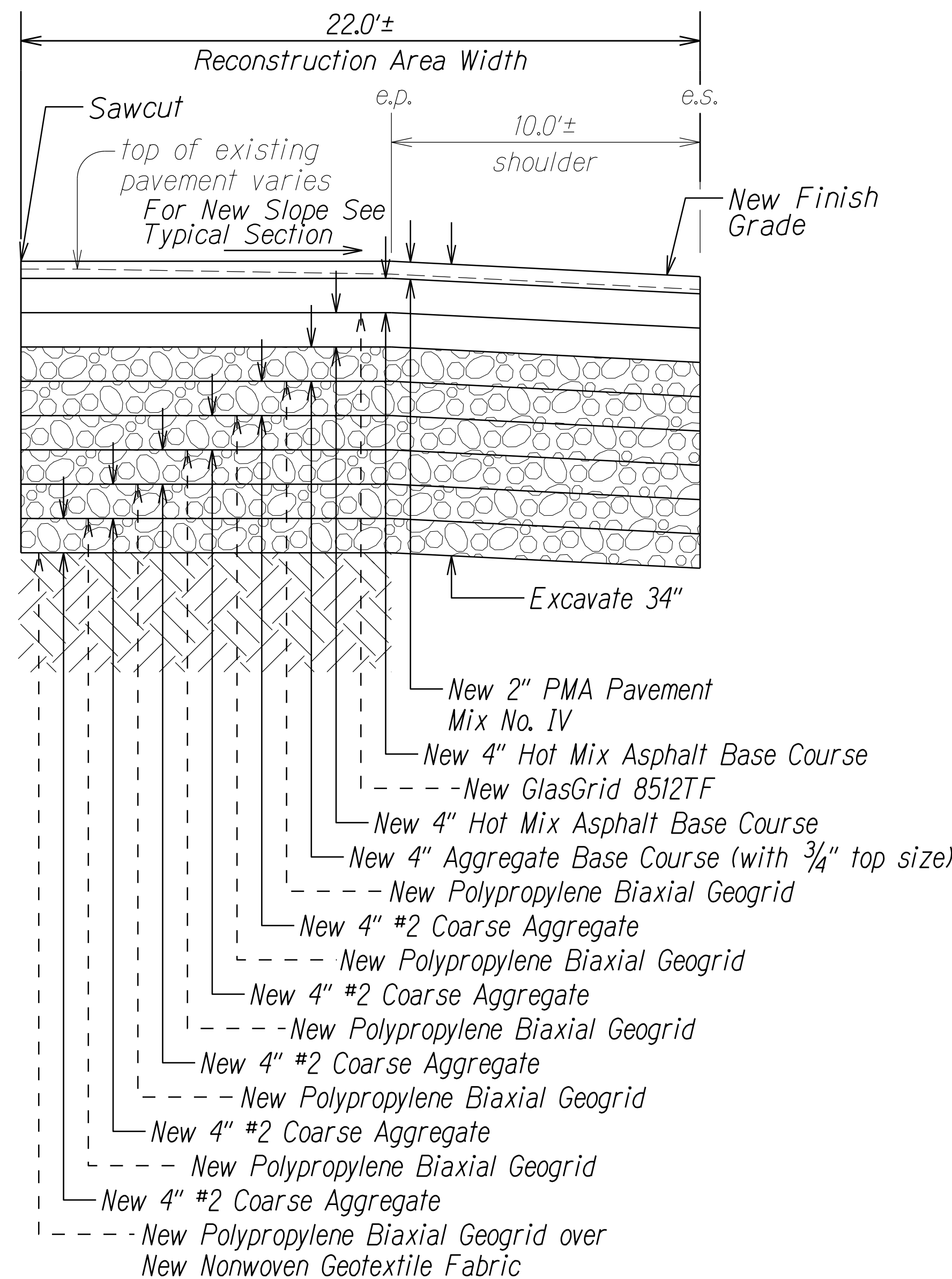
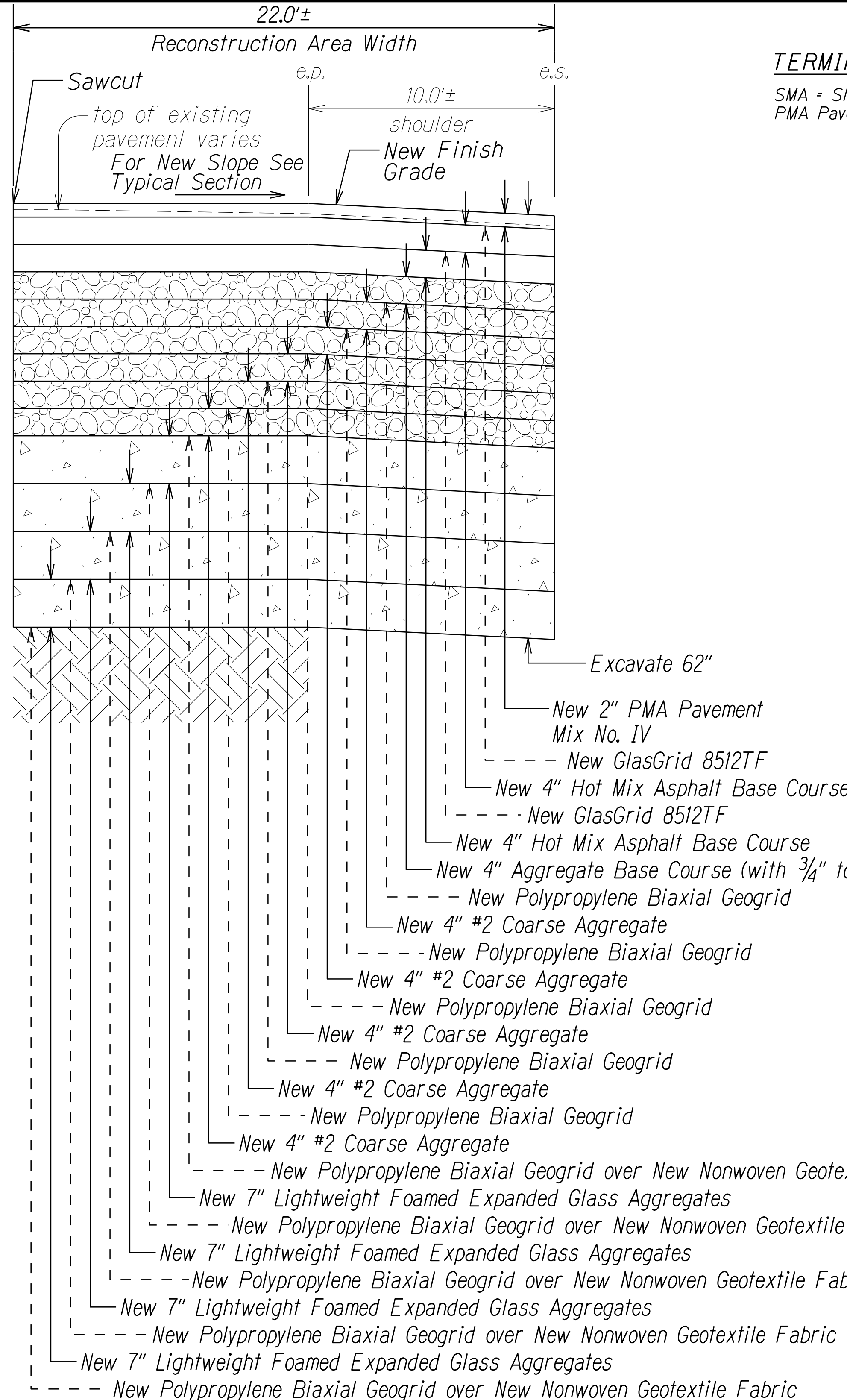


RECONSTRUCTION AT SETTLED AREA A
Scale: N.T.S.



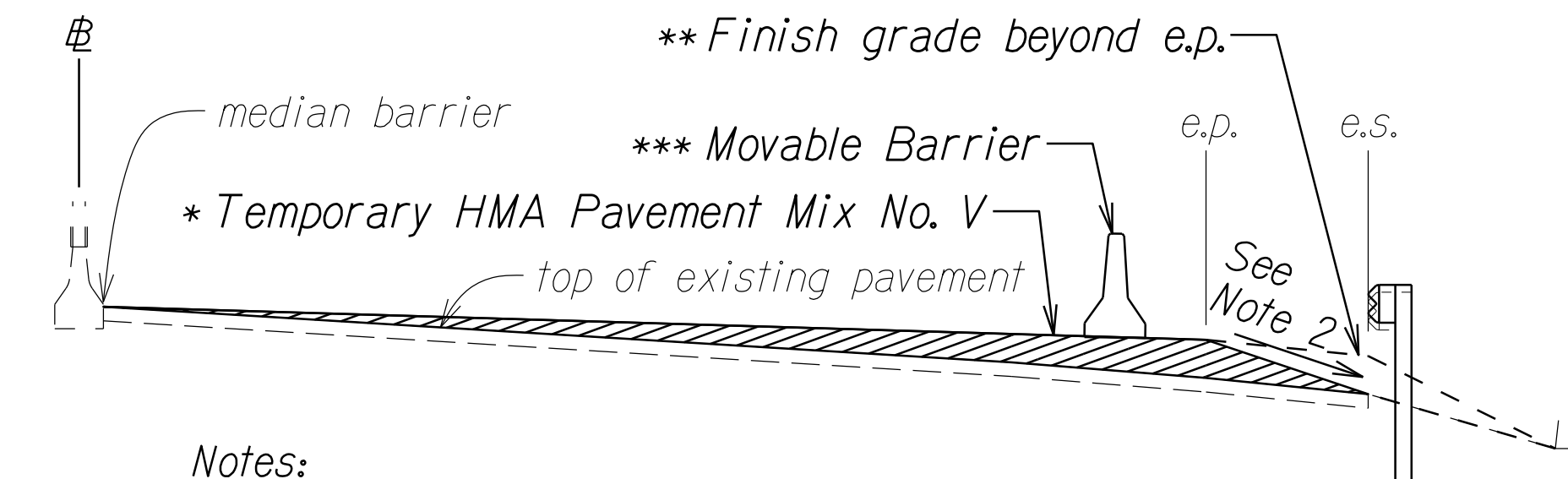
RECONSTRUCTION AT SETTLED AREA B
Scale: N.T.S.



RECONSTRUCTION AT SETTLED AREA C
Scale: N.T.S.

TERMINOLOGY AND DEFINITIONS:

SMA = SMA with PG 64E-22
PMA Pavement Mix IV = Mix IV with PG 64E-22



Notes:

- * 1. Prior to cold planing bring existing grade up to finish grade from median barrier to e.p. See Pavement Grade Plans Sheet 40 for elevations at finish grade.
- ** 2. From finish grade at e.p. taper down to existing grade at e.s. using HMA Pavement Mix No. V. Grade beyond the e.p. shall be brought up to finish grade during reconstruction work.



- *** 3. Movable Barrier shall be installed once temporary HMA Pavement Mix No. V is placed to finish grade. Deploy movable barrier to shield active Reconstruction Work Area. Movable Barrier shall be moved to stored position during periods of time when lane closure is not allowed. Do not remove Movable Barrier from site until the new MGS guardrails within the Reconstruction Work Area are completed in place. For Temporary Barrier Plans, See Sheets 29 - 30.

TYPICAL SECTION TEMPORARY PRIOR TO COLD PLANING
STA. 43+60.00± TO # STA. 54+80.00± Lt. 2
STA. 47+20.00± TO # STA. 55+20.00± Rt.
Scale: N.T.S.

Notes:

1. See General notes #31 and #32.
2. For Reconstruction at Settled Area C, the following option can be implemented, in the case of unforeseen circumstances, upon approval by the Engineer at no additional cost to the State: The Hot Mix Asphalt Base Course can be paved 6" thick, then later cold plane the top 2" and place Tensar Road Repair PG100 or equivalent, then placement of 2" of PMA Mix IV as the top layer. See Special Provisions Section 417 - Paving Grid for Cold-Planed Surface. The 2nd layer of GlasGrid may be substituted with the Tensar Road Repair PG100 in this option. In this option, the costs for cold planing removal of the top layer and the asphalt base course that is removed will not be paid for. See General note #20 on Plan Sheet No. 3.

SURVEY PLOTTED BY	DATE
DRAWN BY
TRACED BY
DESIGNED BY
CHECKED BY
NOTE BOOK
.....



11/30/21 Revised Typical Section Temporary Prior to Cold Planing Lt. and limit from 55+20.00± to 54+80.00±.



11/10/21 Revised Typical Section Temporary Prior to Cold Planing Note 3.

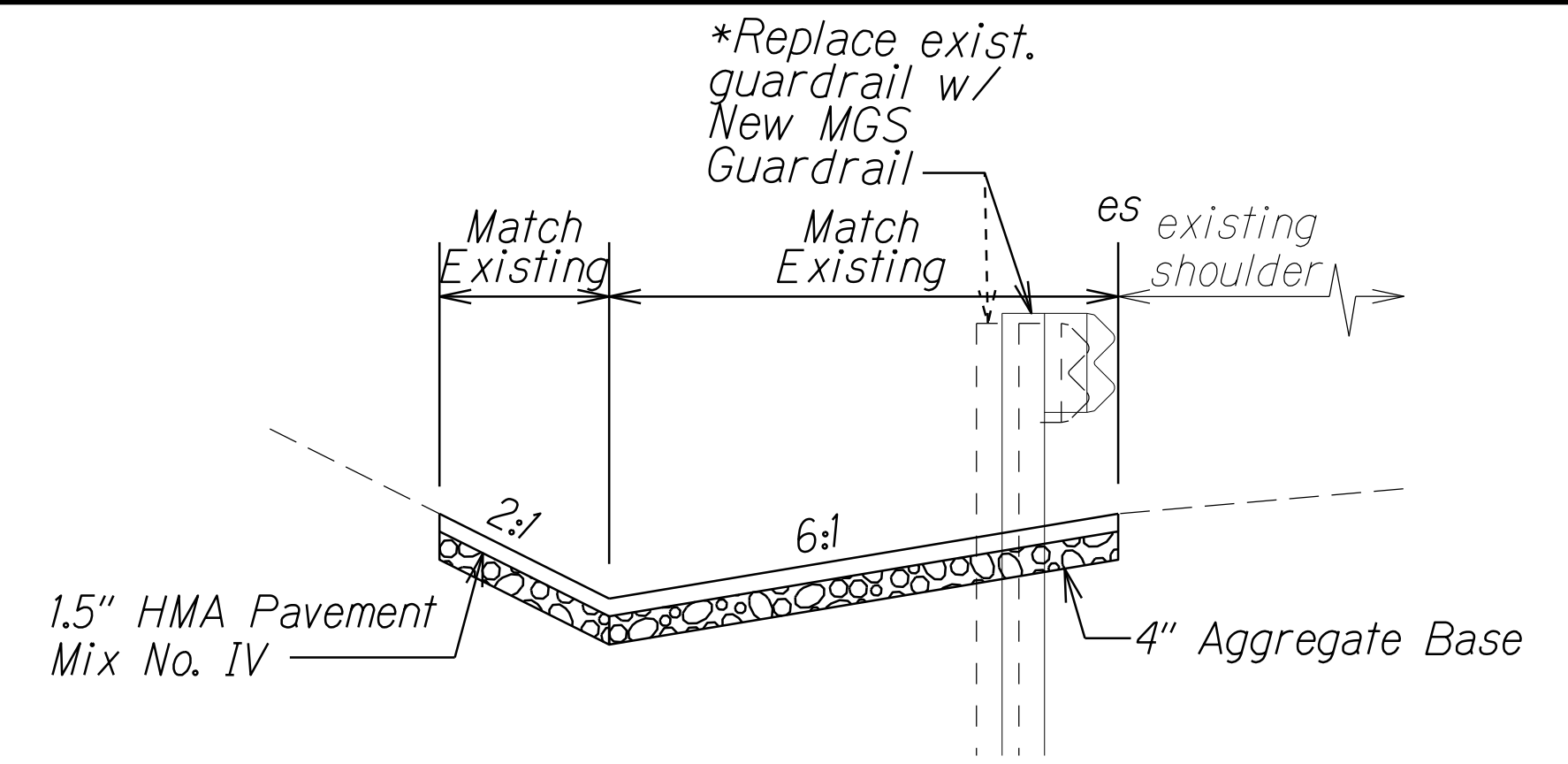
DATE

REVISION

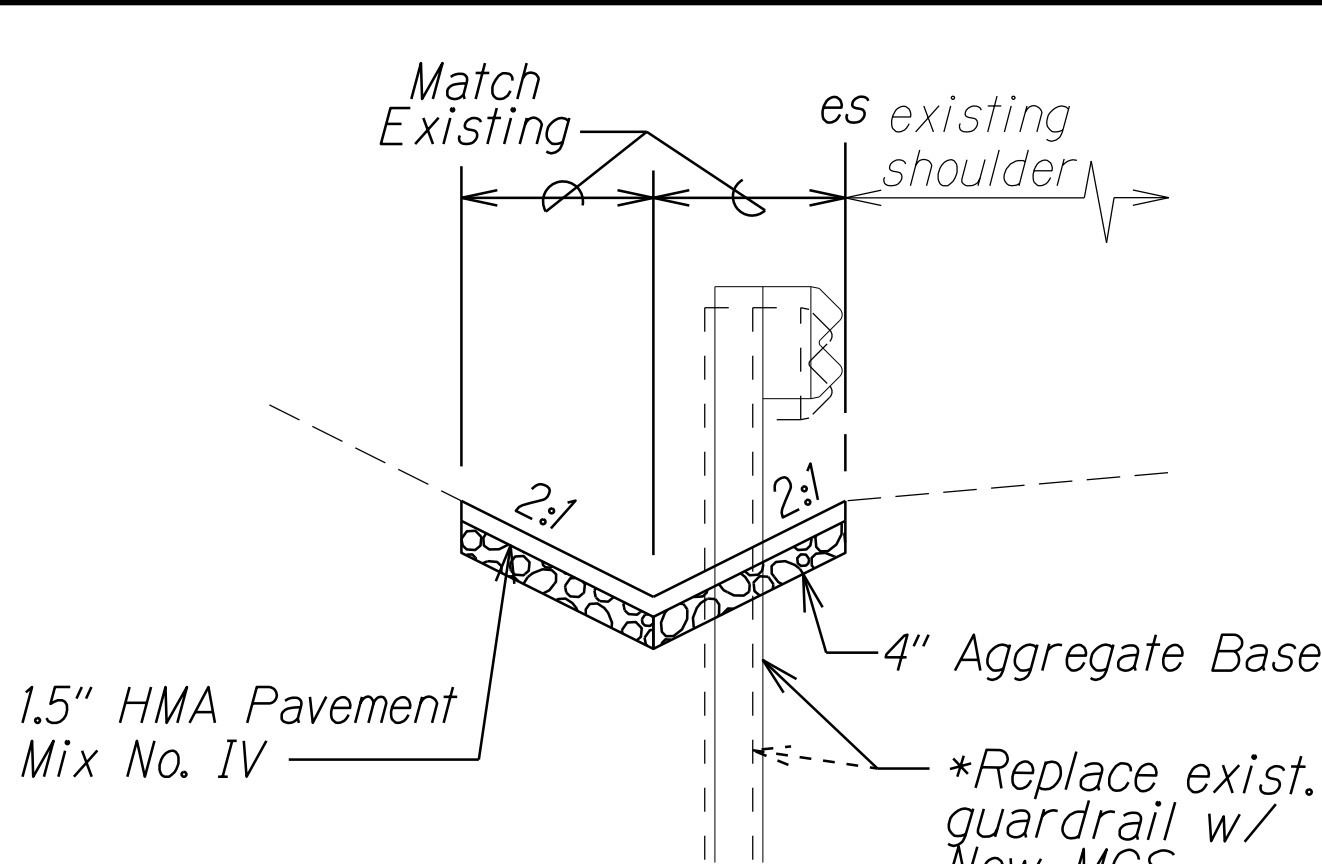
STATE OF HAWAII DEPARTMENT OF TRANSPORTATION HIGHWAYS DIVISION	
TYPICAL SECTIONS & DETAILS	
INTERSTATE ROUTE H-1 REHABILITATION	
SALT LAKE BOULEVARD TO AIRPORT VIADUCT	
FEDERAL-AID PROJECT NO. NH-HI-K275	
Scale: NTS	Date: October, 2021
SHEET No. 1 OF 4 SHEETS	

FED. ROAD DIST. NO.	STATE	FED. AID PROJ. NO.	FISCAL YEAR	SHEET NO.	TOTAL SHEETS
HAWAII	HAW.	NH-HI-1(275)	2021	ADD. 19	65

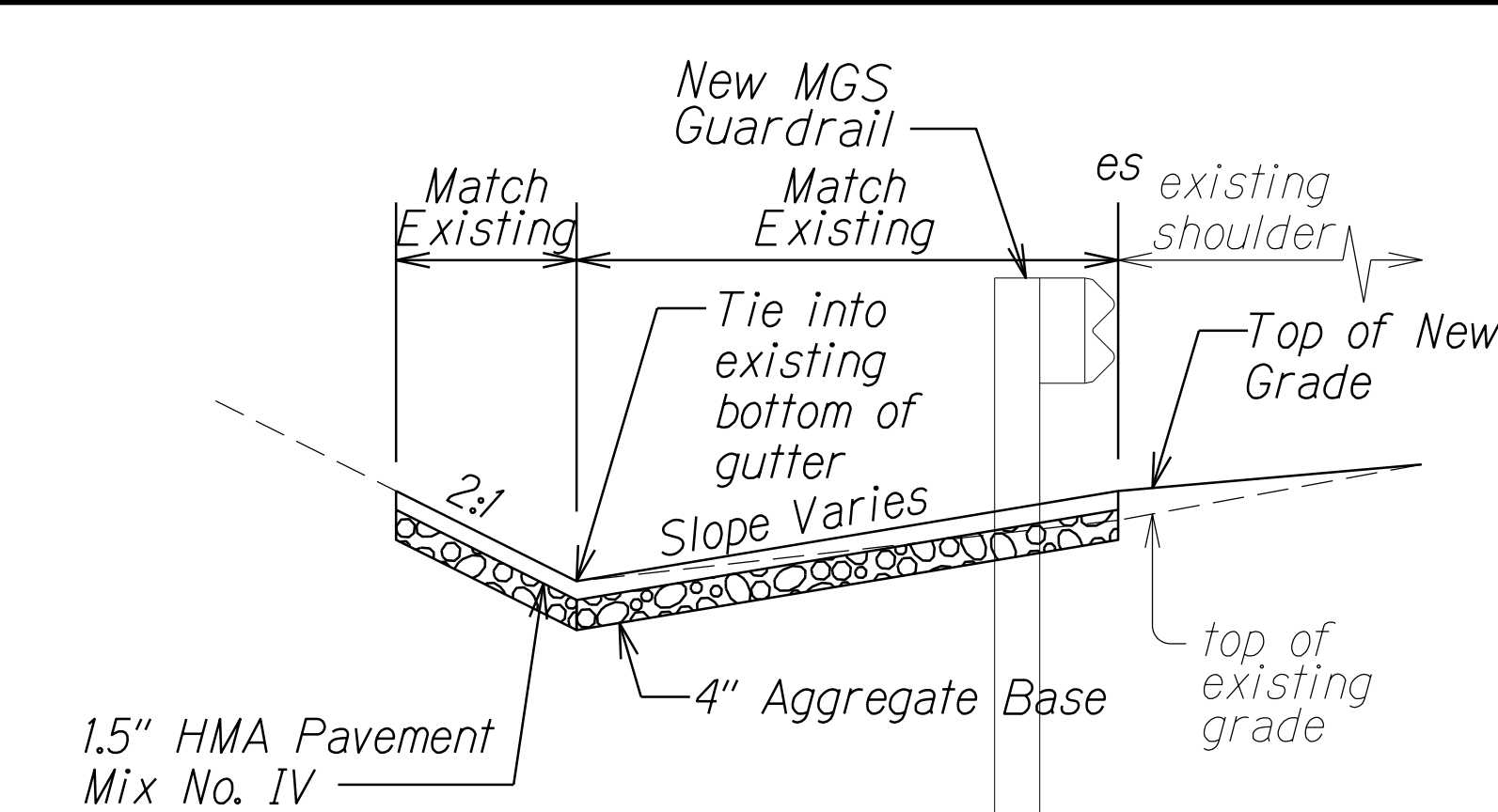
TERMINOLOGY AND DEFINITIONS:
SMA = SMA with PG 64E-22



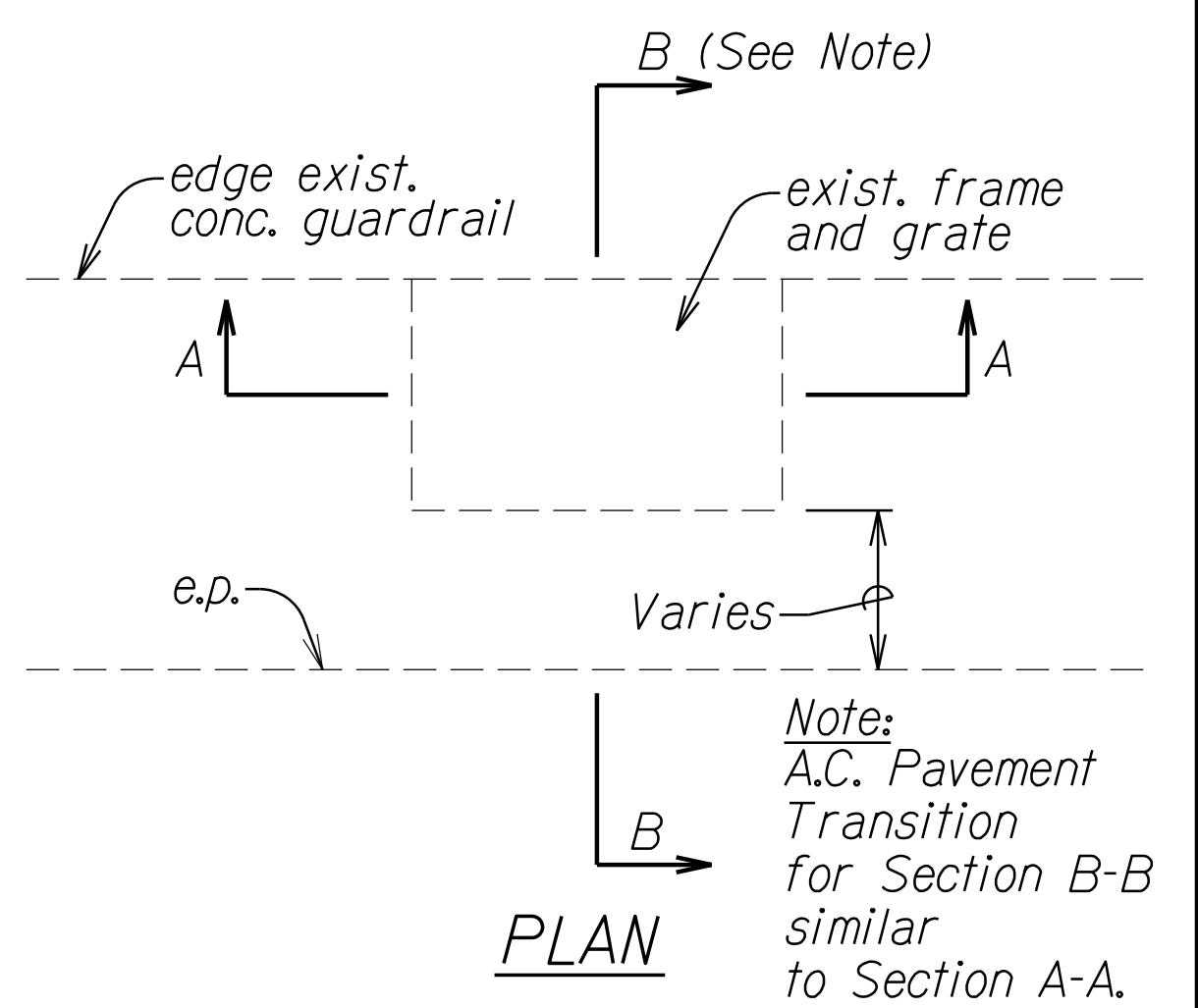
RECONSTRUCTION OF EXISTING ASPHALT CONCRETE GUTTER TYPE 7 (6' TO 8')
Scale: N.T.S.



RECONSTRUCTION OF EXISTING ASPHALT CONCRETE GUTTER TYPE 7 (4' TO 5.99')
Scale: N.T.S.



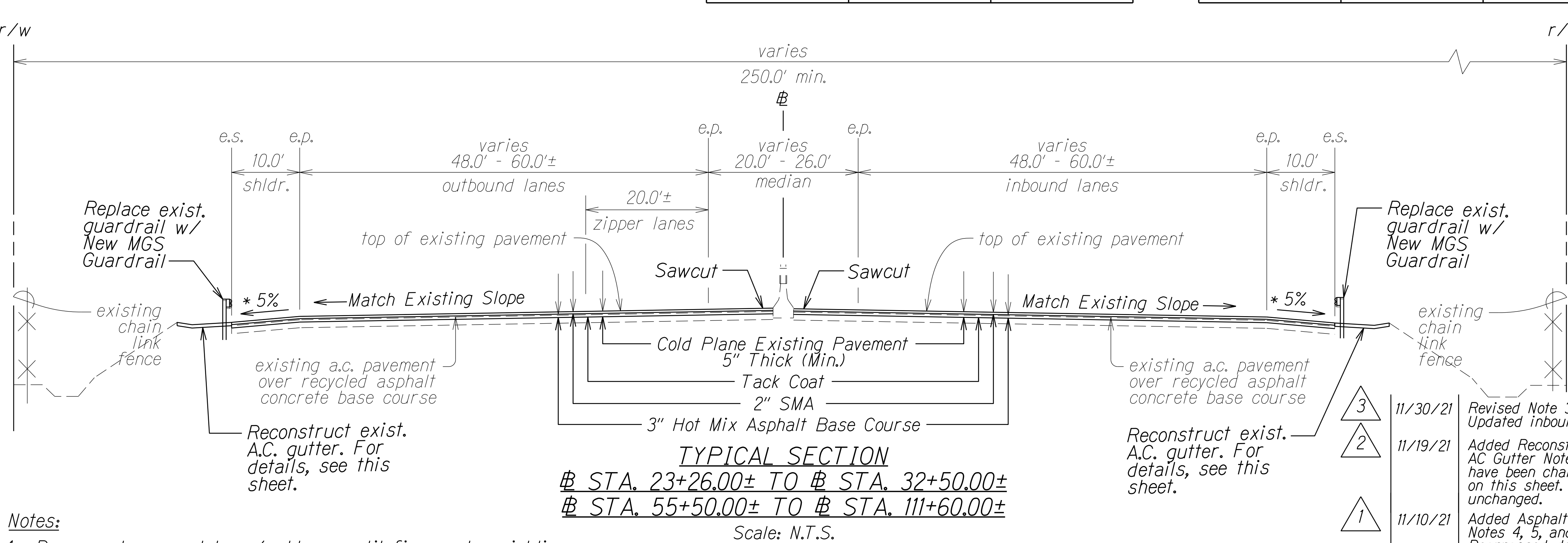
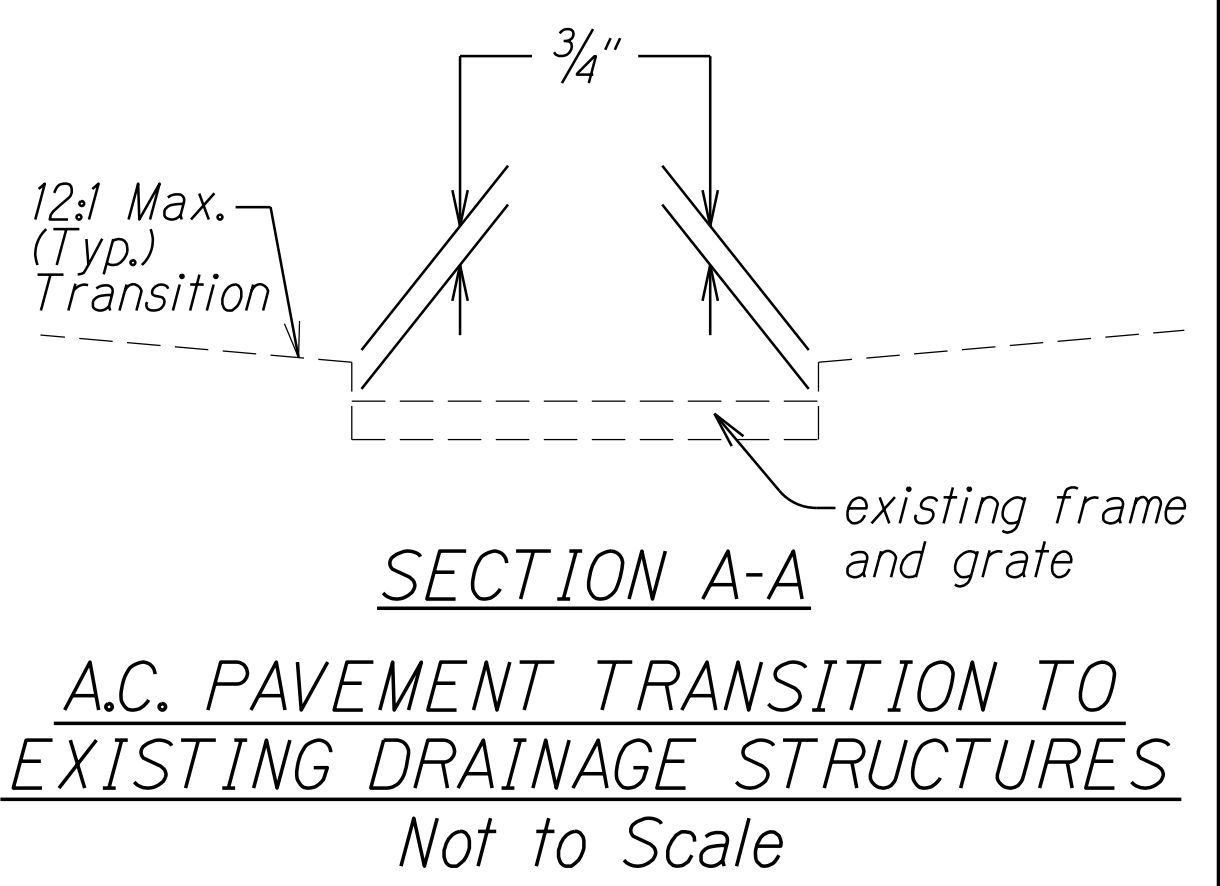
RECONSTRUCTION OF EXISTING ASPHALT CONCRETE GUTTER TYPE 7 (VARIES)
Scale: N.T.S.



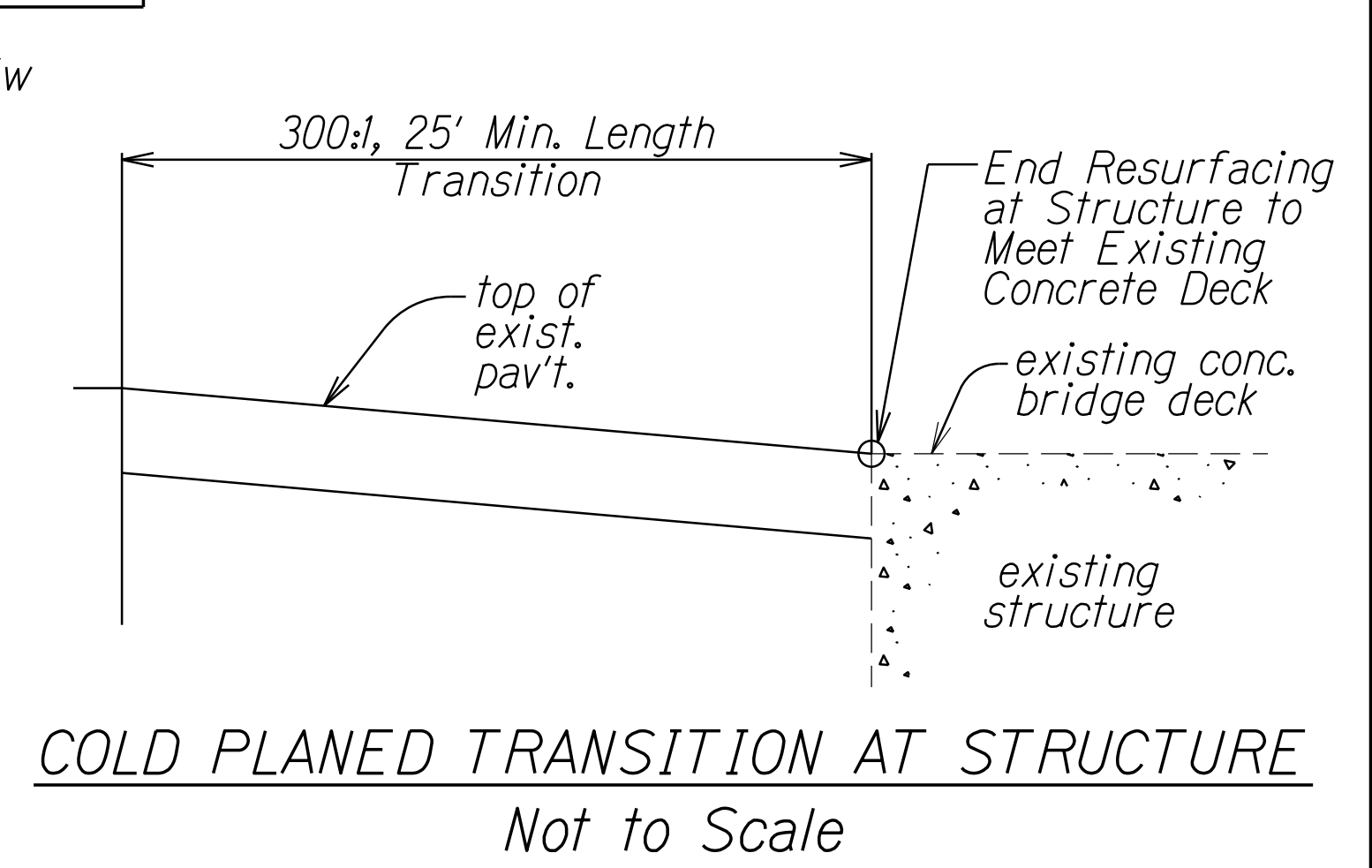
- Reconstruction of Existing AC Gutter Notes:**
- Existing guardrail location varies. New guardrail shall be located adjacent to the edge of shoulder.
 - Removal and disposal of existing asphalt concrete gutter, new HMA Pavement, and Aggregate Base shall be paid under Items No. 639.1000 and 639.2000 - Reconstruct Existing Asphalt Concrete Gutter.
 - Clear existing vegetation to uncover existing gutter.
 - From $\#$ Sta. 53+04± to $\#$ Sta. 55+22± Lt. and $\#$ Sta. 59+54± to $\#$ Sta. 66+25± Lt., payment shall be under Item No. 639.1000 - Reconstruct Existing Asphalt Concrete Gutter (6 to 8 Feet).
 - From $\#$ Sta. 55+58± to $\#$ Sta. 59+13± Lt., payment shall be under Item No. 639.2000 - Reconstruct Existing Asphalt Concrete Gutter (4 to 5.99 Feet).
 - From $\#$ Sta. 55+22± to $\#$ Sta. 55+58± Lt. and $\#$ Sta. 59+13± to $\#$ Sta. 59+54± Lt., payment shall be under Item No. 639.3000 - Reconstruct Existing Asphalt Concrete Gutter Transition.
 - For Reconstruction of Existing Asphalt Concrete Gutter Limits, see tables on this sheet.

Type 7 Width	# Station	
	Begin	End
6' to 8'	26+00±	27+75±
	37+20±	37+93±
	80+25±	84+75±
4' to 5.99'	23+82±	0+26±
	93+12±	96+80±
	102+60±	109+43±
Varies	53+04±	66+25±

Type 7 Width	# Station	
	Begin	End
6' to 8'	23+17±	23+90±
	30+75±	33+27±
	52+63±	55+55±
	61+20±	64+18±
	RAMP WN 1+35±	RAMP WN 3+50±
4' to 5.99'	88+75±	92+50±
	55+55±	61+20±



- Notes:**
- Recompact exposed base/subbase until firm and unyielding.
 - See Roadway Plans for limits of reconstruction, new guardrail, paving under new guardrail, and reconstruction of existing A.C. gutter.
 - See Pavement Grade Plans on Sheets no. 40 and 41 for new elevations at finish grade on outbound and inbound shoulder.

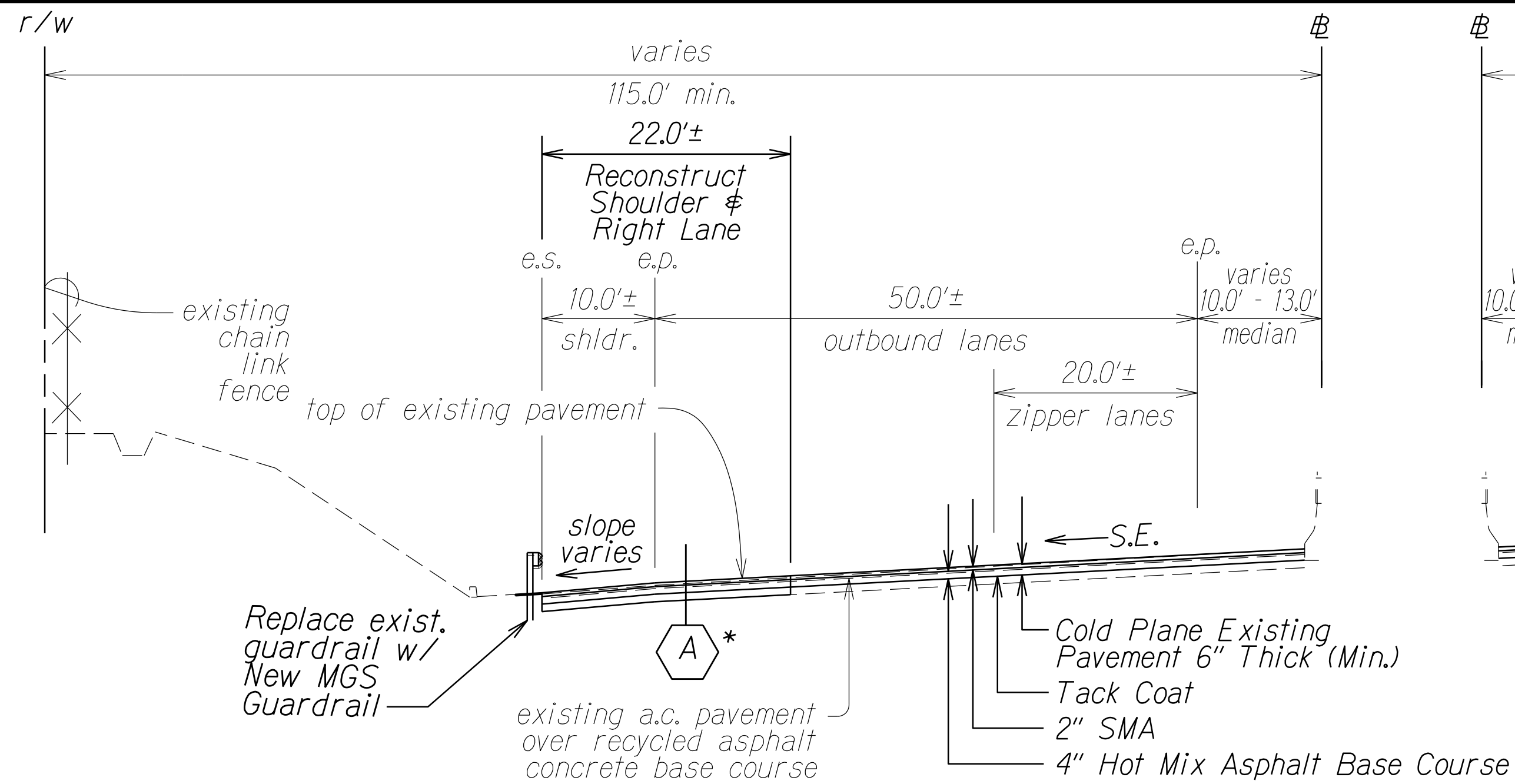


DATE	REVISION
11/30/21	Revised Note 3. Updated inbound gutter recon limits.
11/19/21	Added Reconstruction of Existing AC Gutter Note 7 to mention limits have been changed to table format on this sheet. Actual limits remain unchanged.
11/10/21	Added Asphalt Concrete Gutter Notes 4, 5, and 6. Rearranged detail positions on this sheet.

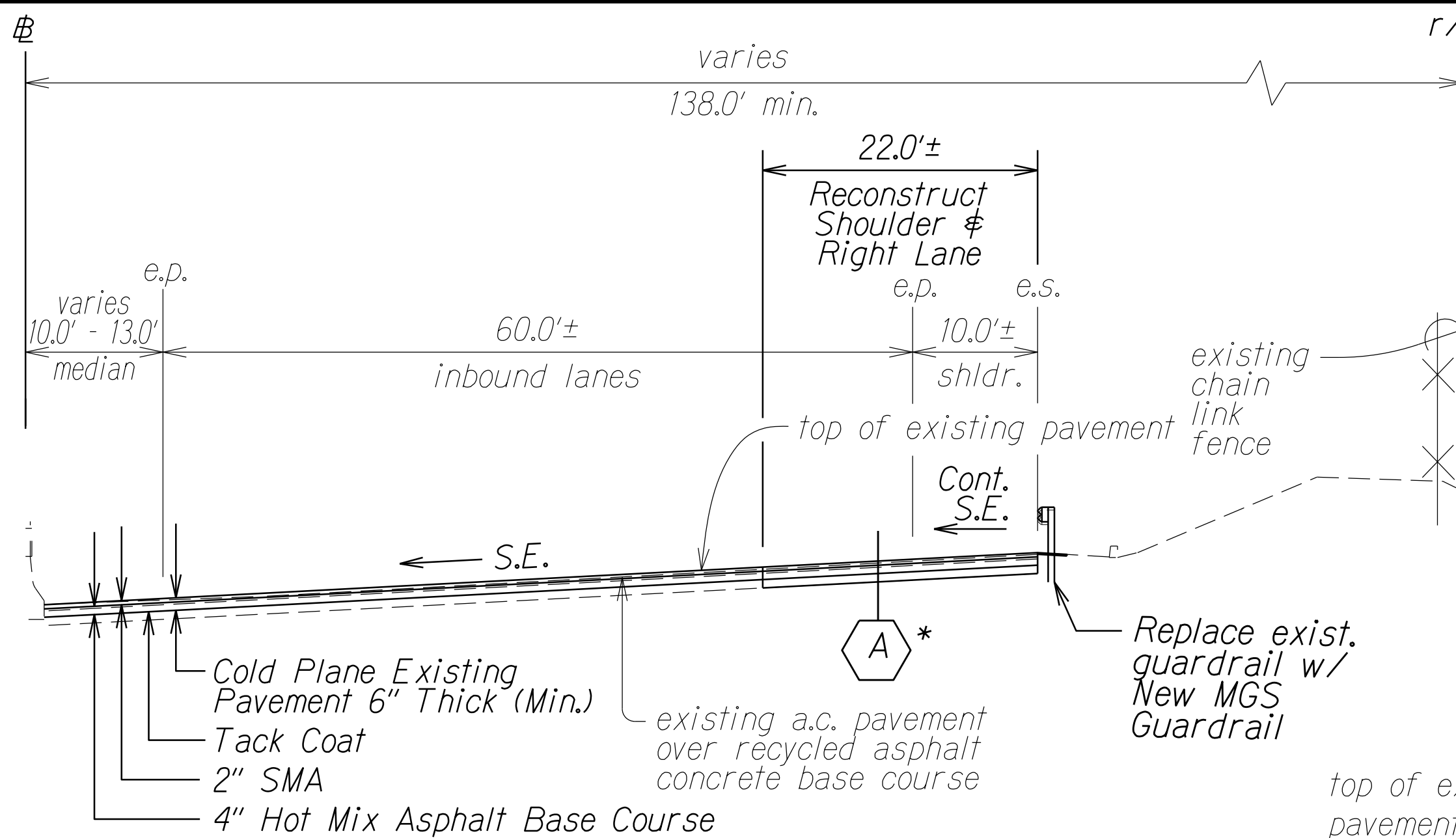
TYPICAL SECTIONS & DETAILS	
INTERSTATE ROUTE H-1 REHABILITATION SALT LAKE BOULEVARD TO AIRPORT VIADUCT FEDERAL-AID PROJECT NO. NH-HI-1(275)	
Scale: NTS	Date: October, 2021
SHEET No. 2 OF 4 SHEETS	

FED. ROAD DIST. NO.	STATE	FED. AID PROJ. NO.	FISCAL YEAR	SHEET NO.	TOTAL SHEETS
HAWAII	HAW.	NH-HI-1(275)	2021	ADD. 20	65

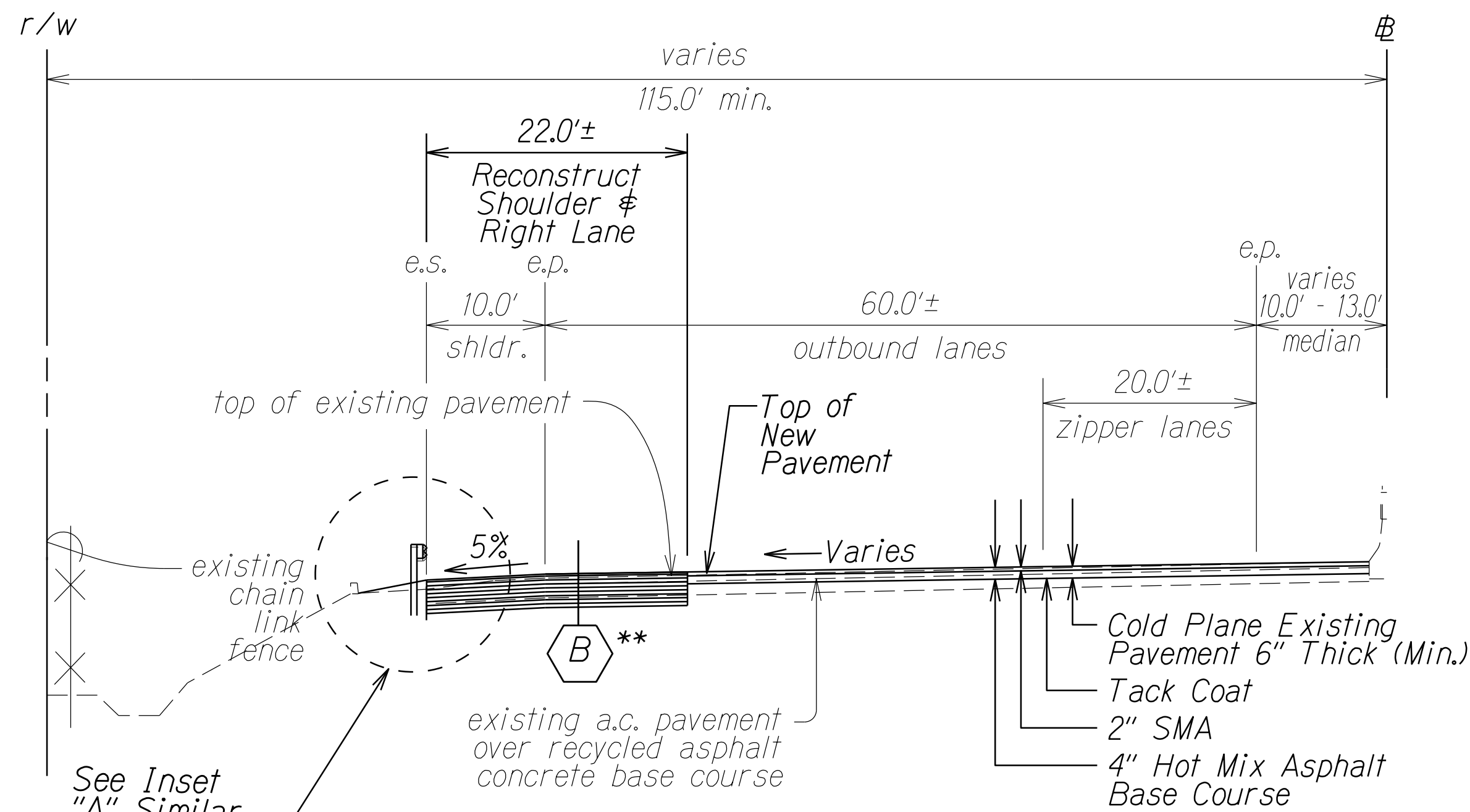
TERMINOLOGY AND DEFINITIONS:
SMA = SMA with PG 64E-22
PMA Pavement Mix IV = Mix IV with PG 64E-22



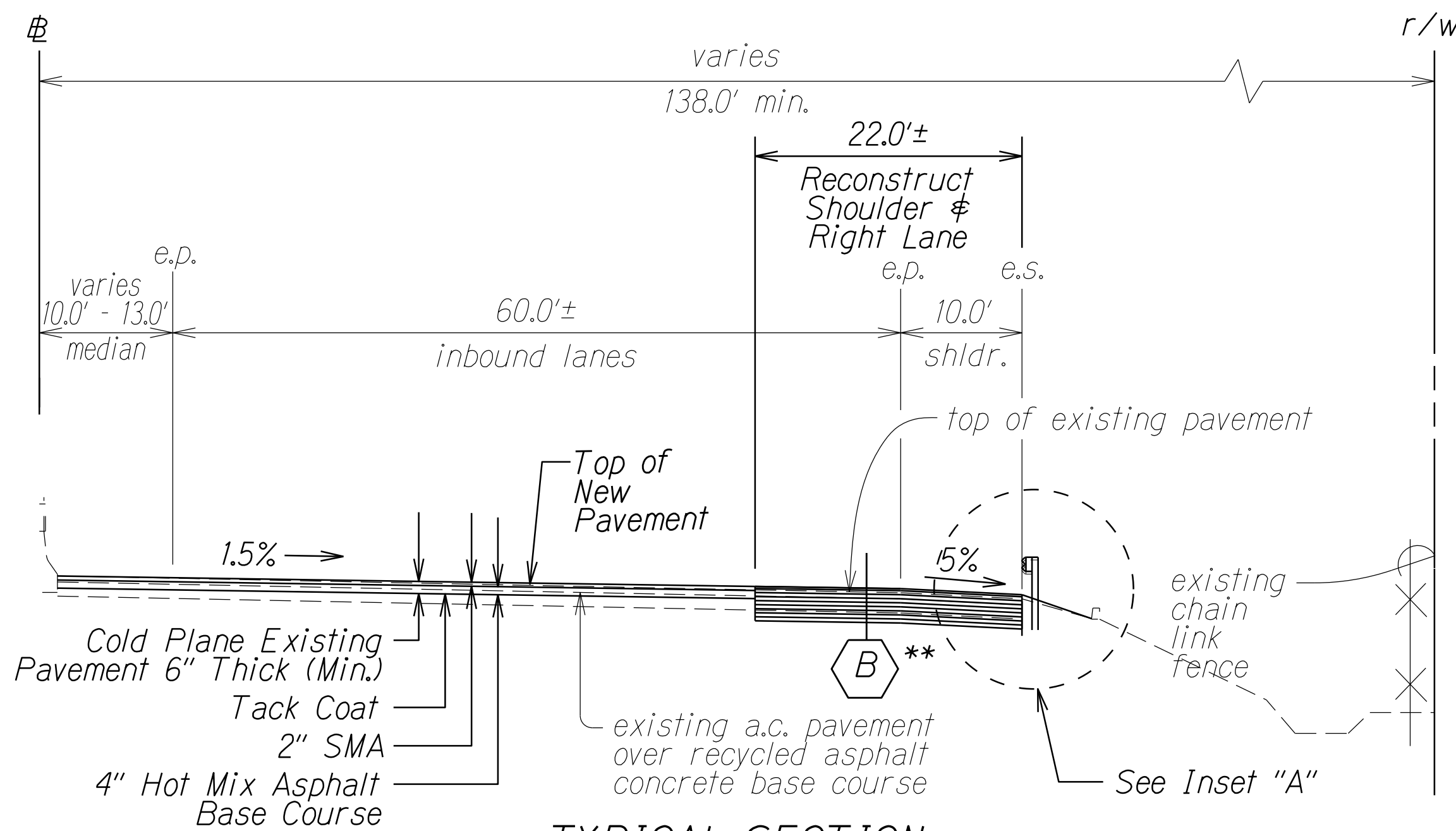
TYPICAL SECTION
STA. 32+50.00± TO # STA. 40+00.00± Lt.
Scale: N.T.S.



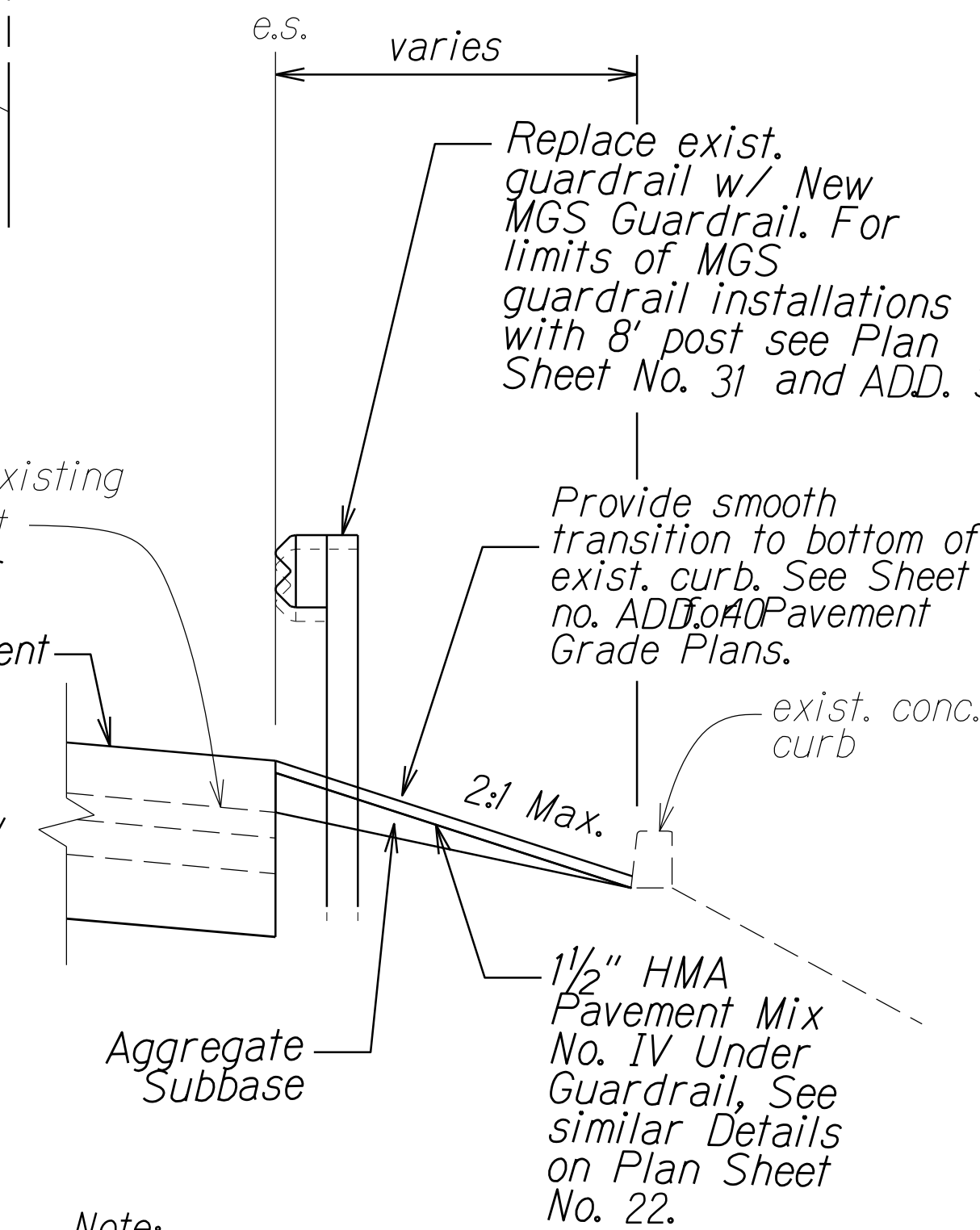
TYPICAL SECTION
STA. 32+50.00± TO # STA. 48+00.00± Rt.
Scale: N.T.S.



TYPICAL SECTION
STA. 40+00.00± TO # STA. 49+40.00± Lt.
Scale: N.T.S.



TYPICAL SECTION
STA. 48+00.00± TO # STA. 50+30.00± Rt.
Scale: N.T.S.



Note:
1. Aggregate Subbase shall be paid under Item 305.1000 - Aggregate Subbase.

INSET "A"
Scale: N.T.S.

Notes:

- *1. See Sheet No. 18 for Reconstruction Detail
- **2. See Sheet No. 18 for Reconstruction Detail
3. Recompact exposed base/subbase until firm and unyielding
4. See Pavement Grade Plans Sheet No. 40 and 41 for elevations at finish grade. From # Sta. 43+60± to # Sta. 54+80± Lt. and # Sta. 47+20± to # Sta. 55+20± Rt., prior to cold planing, bring existing grade up to finish grade with HMA Pavement, Mix No. V. See Typical Section on Sheet No. 18.
5. See Roadway Plans for limits of reconstruction, new guardrail, paving under new guardrail, and reconstruction of existing A.C. gutter.



11/30/21 Revised Note 4.

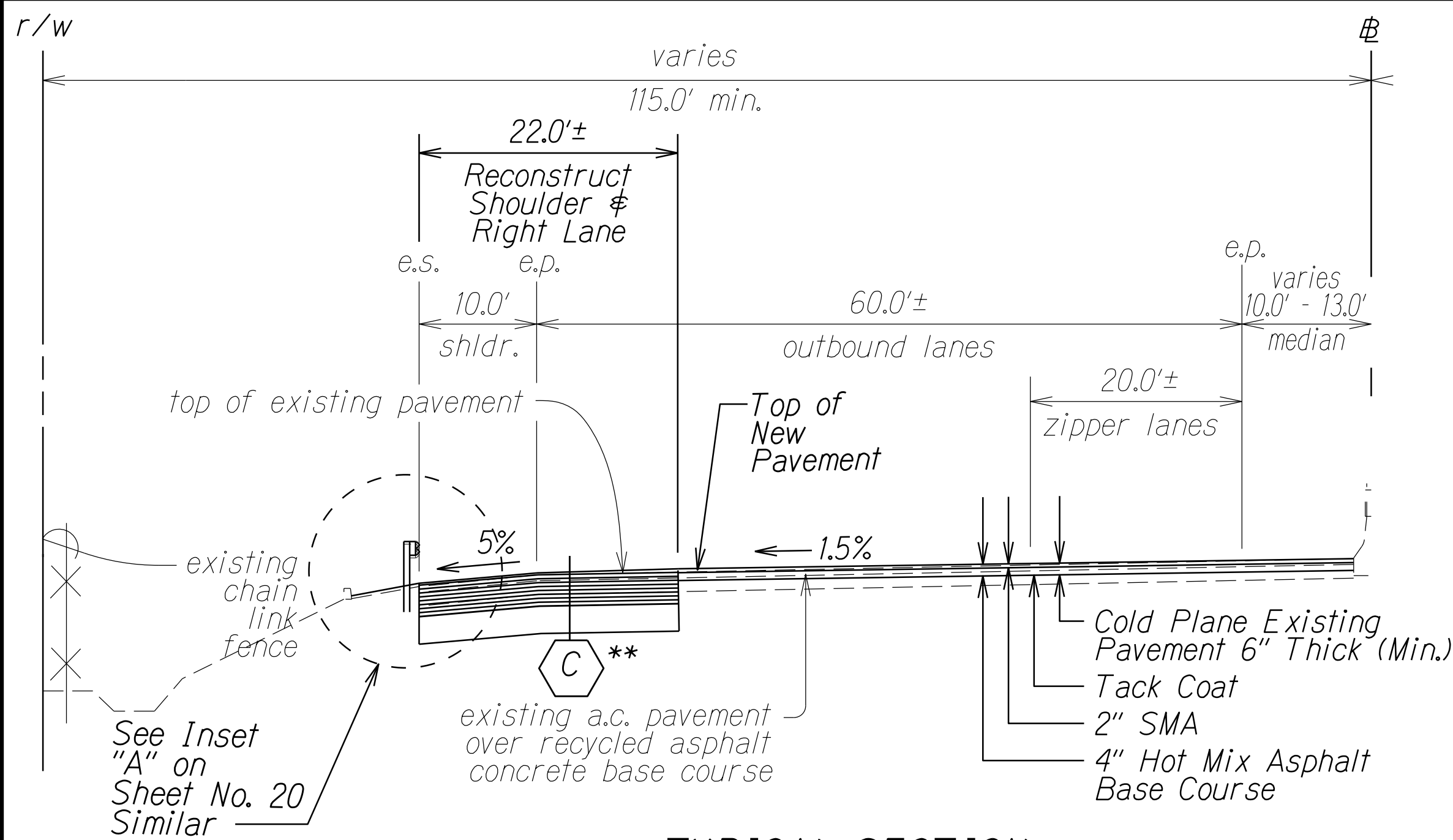
DATE REVISION

STATE OF HAWAII DEPARTMENT OF TRANSPORTATION HIGHWAYS DIVISION	
TYPICAL SECTIONS & DETAILS	
INTERSTATE ROUTE H-1 REHABILITATION SALT LAKE BOULEVARD TO AIRPORT VIADUCT FEDERAL-AID PROJECT NO. NH-HI-1(275)	
Scale: NTS	Date: October, 2021
SHEET No. 3 OF 4 SHEETS	

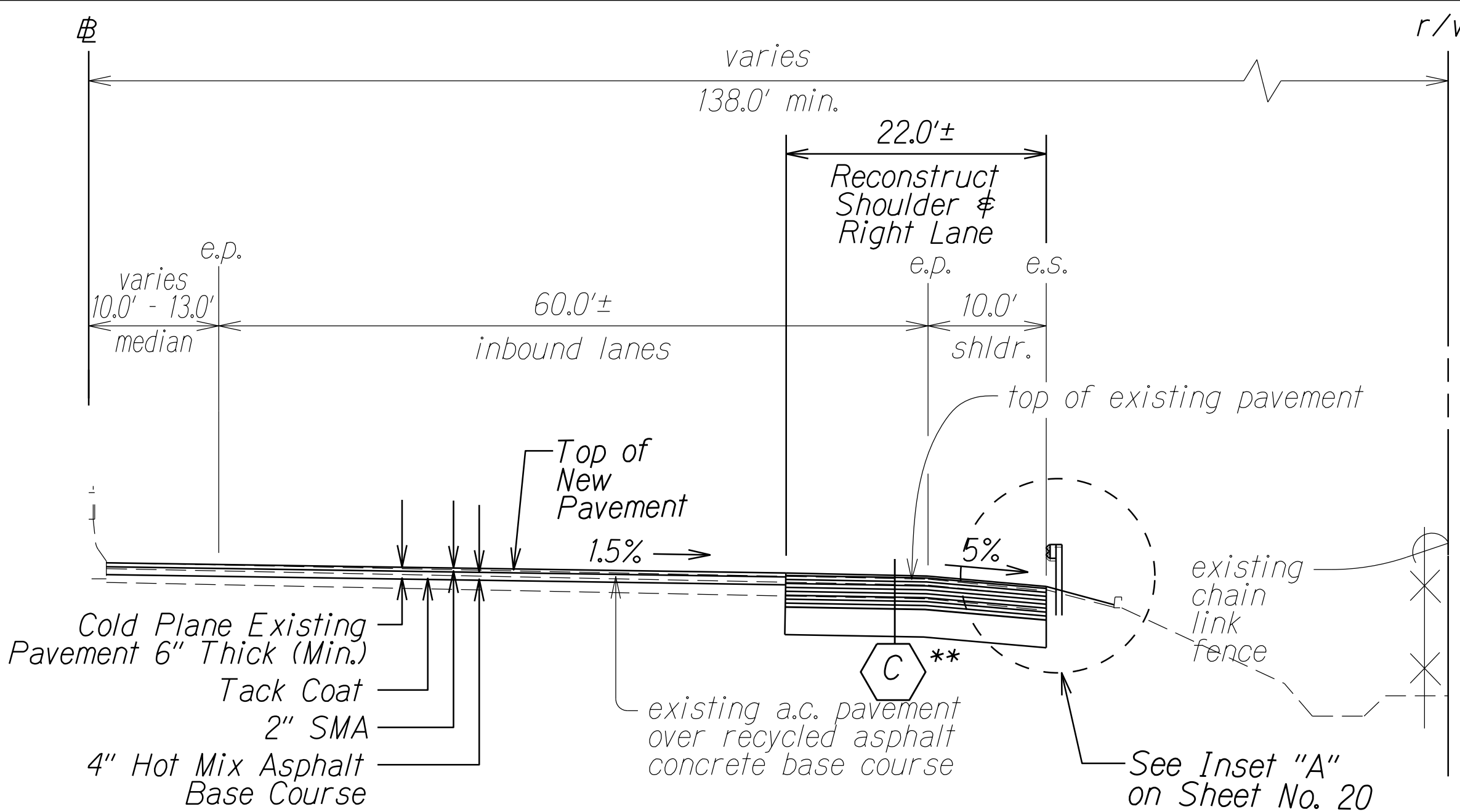
FED. ROAD DIST. NO.	STATE	FED. AID PROJ. NO.	FISCAL YEAR	SHEET NO.	TOTAL SHEETS
HAWAII	HAW.	NH-HI-1(275)	2021	ADD. 21	65

TERMINOLOGY AND DEFINITIONS:

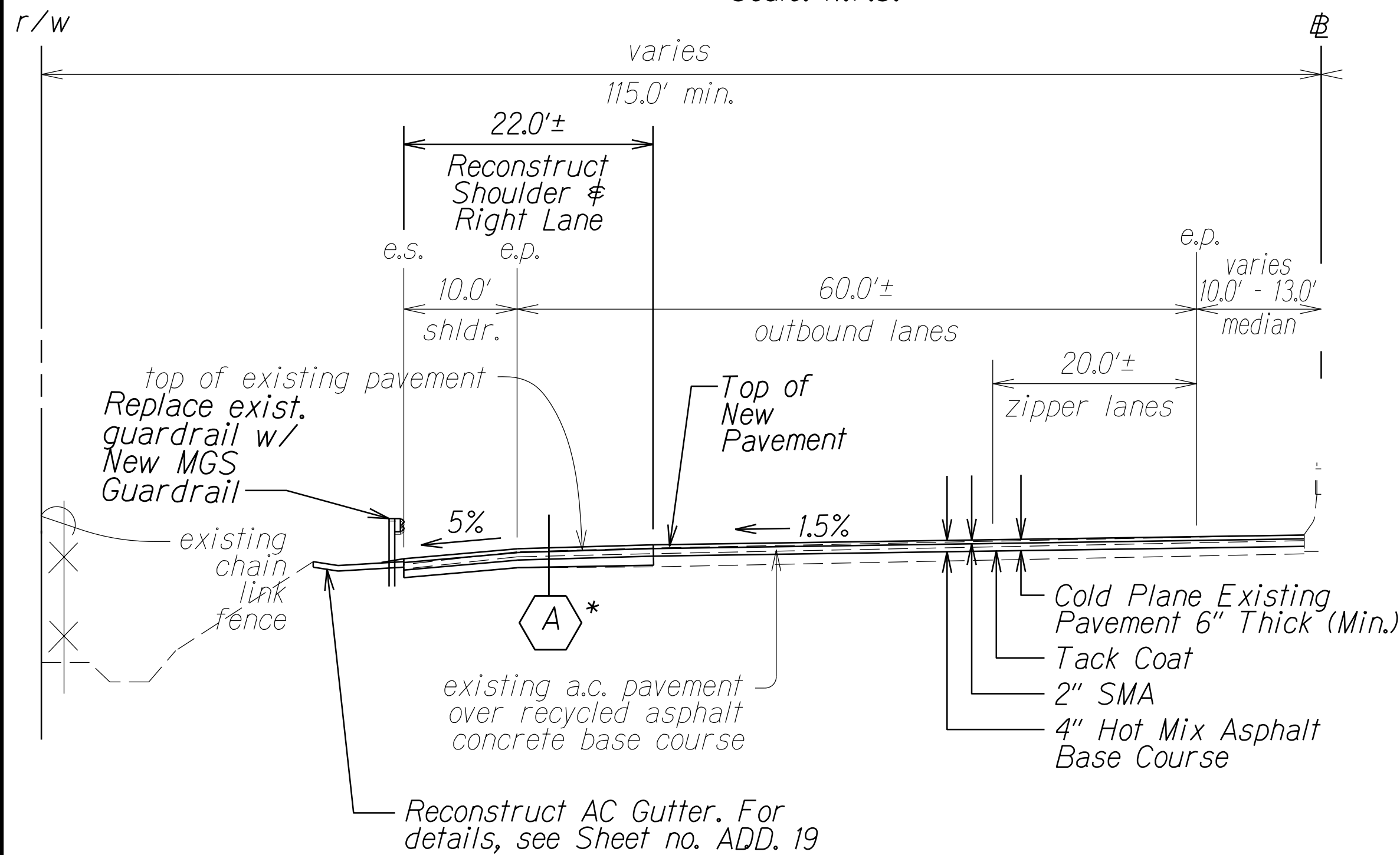
SMA = SMA with PG 64E-22
PMA Pavement Mix IV = Mix IV with PG 64E-22



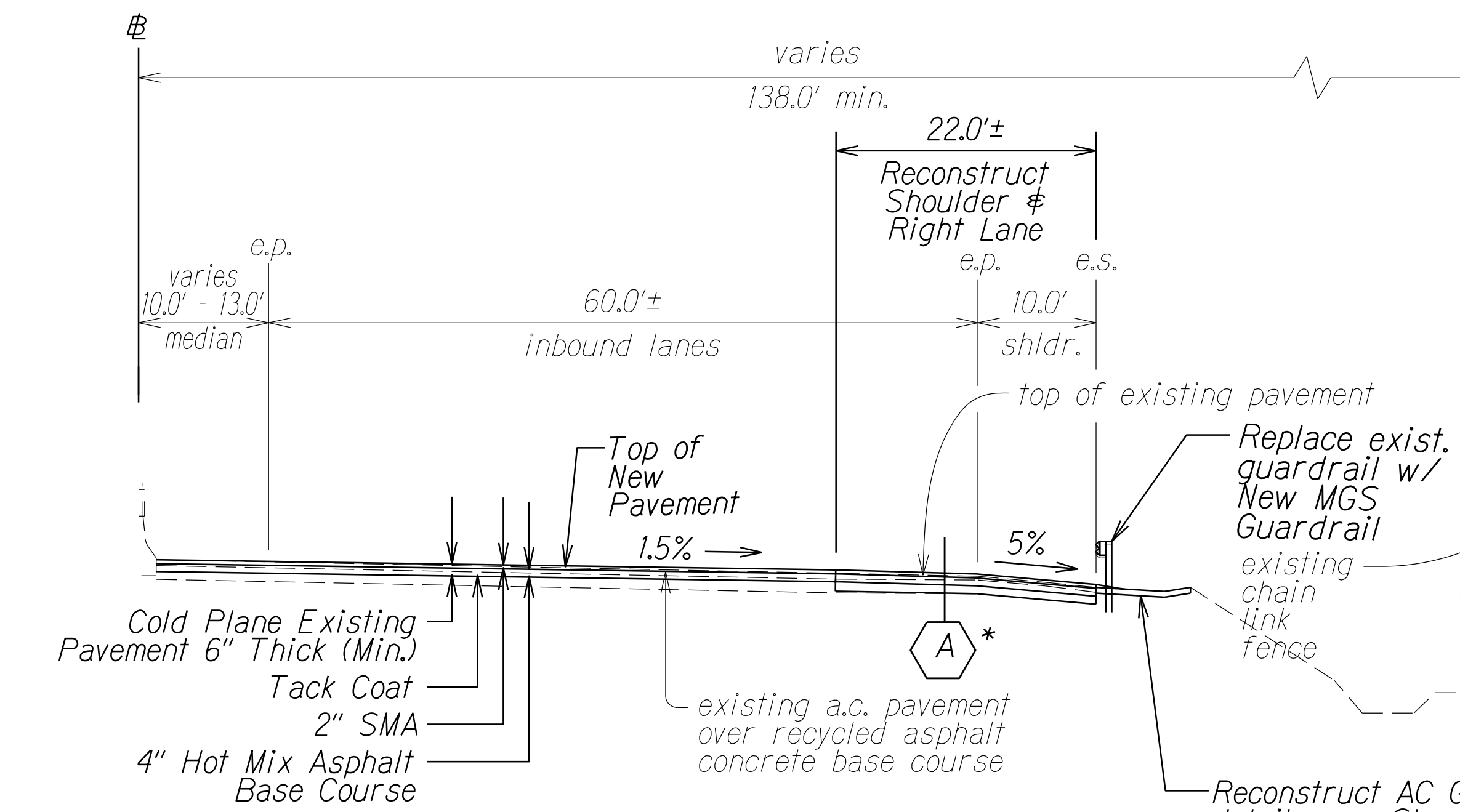
TYPICAL SECTION
STA. 49+40.00± TO # STA. 53+00.00± Lt.
Scale: N.T.S.



TYPICAL SECTION
STA. 50+30.00± TO # STA. 54+00.00± Rt.
Scale: N.T.S.



TYPICAL SECTION
STA. 53+00.00± TO # STA. 55+50.00± Lt.
Scale: N.T.S.



TYPICAL SECTION
STA. 54+00.00± TO # STA. 55+50.00± Rt.
Scale: N.T.S.

Notes:

- *1. See Sheet No. 18 for Reconstruction Detail **A**
- **2. See Sheet No. 18 for Reconstruction Detail **C**
3. Recompact exposed base/subbase until firm and unyielding
4. See Pavement Grade Plans Sheet No. 40 and 41 for elevations at finish grade. From # Sta. 43+60± to # Sta. 54+80± Lt. and # Sta. 47+20± to # Sta. 55+20± Rt., prior to cold planing, bring existing grade up to finish grade with HMA Pavement, Mix No. V. See Typical Section on Sheet No. 18.
5. See Roadway Plans for limits of reconstruction, new guardrail, paving under new guardrail, and reconstruction of existing A.C. gutter.

11/30/21 Revised Note 4.

DATE REVISION

STATE OF HAWAII
DEPARTMENT OF TRANSPORTATION
HIGHWAYS DIVISION

TYPICAL SECTIONS & DETAILS

INTERSTATE ROUTE H-1 REHABILITATION
SALT LAKE BOULEVARD TO AIRPORT VIADUCT
FEDERAL-AID PROJECT NO. NH-HI-1(275)

Scale: NTS Date: October, 2021

SHEET No. 4 OF 4 SHEETS