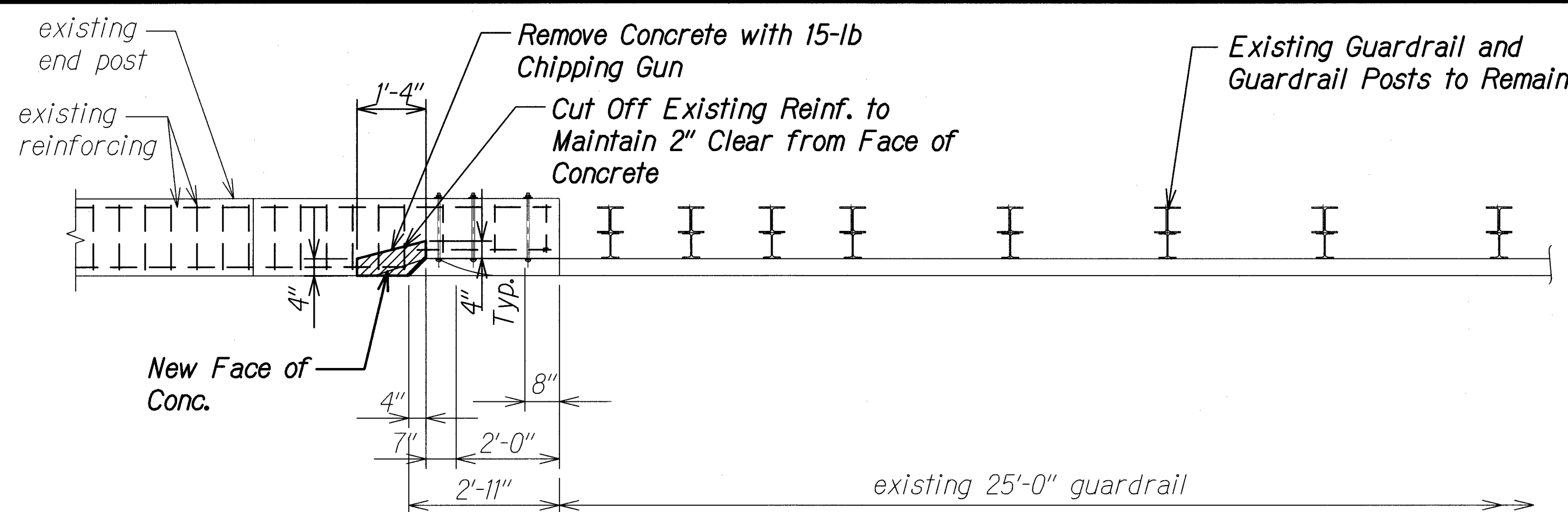
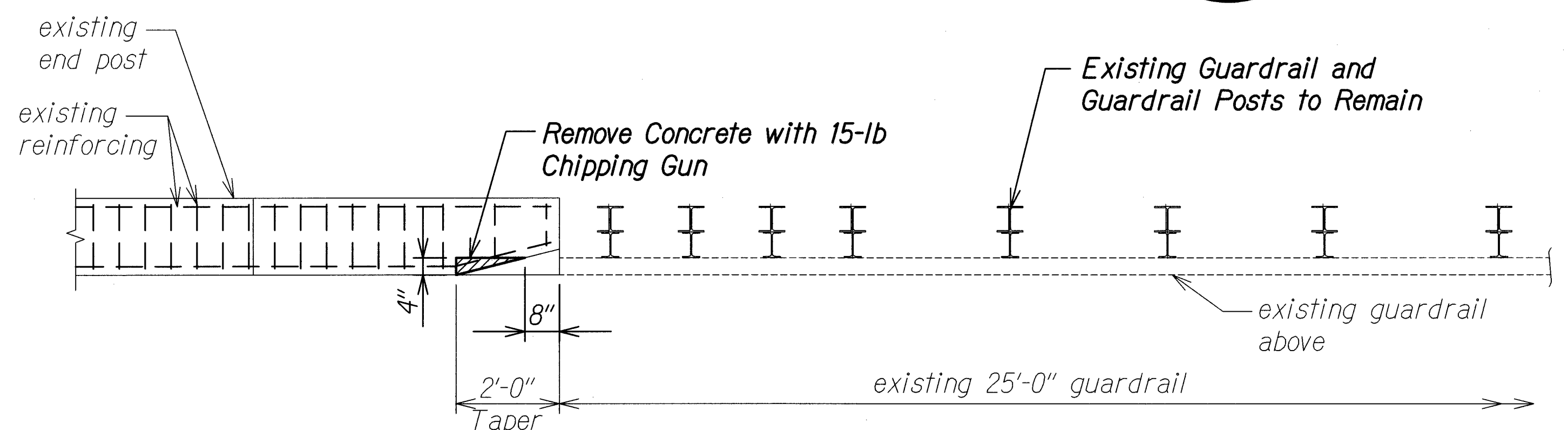


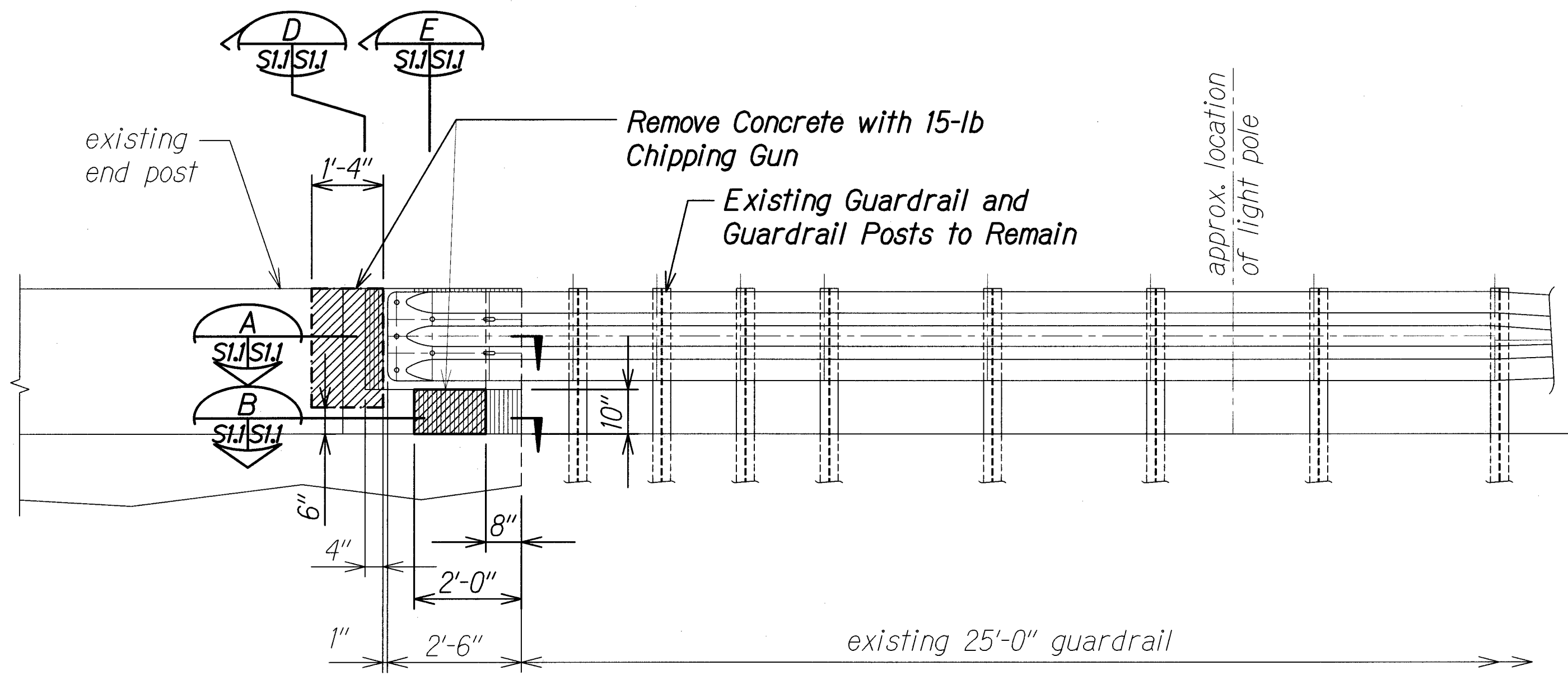
FED. ROAD DIST. NO.	STATE	FEDERAL AID PROJ. NO.	FISCAL YEAR	SHEET NO.	TOTAL SHEETS
HAWAII	HAW.	HSIP-HI-1(270)	2018	59	241



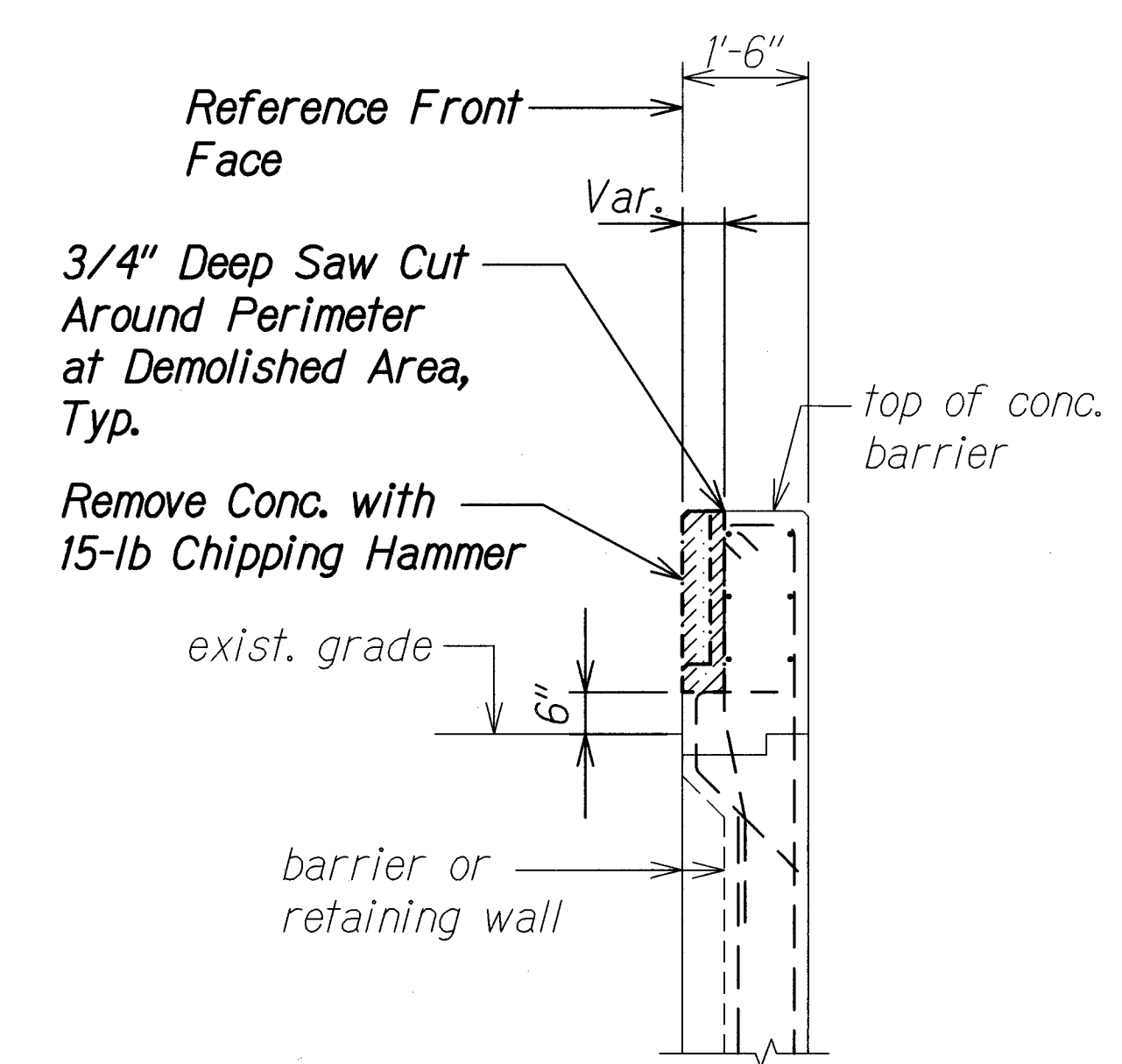
**TYPICAL TYPE I END POST
DEMOLITION PLAN - UPPER PORTION**
Scale: 1/2" = 1'-0"



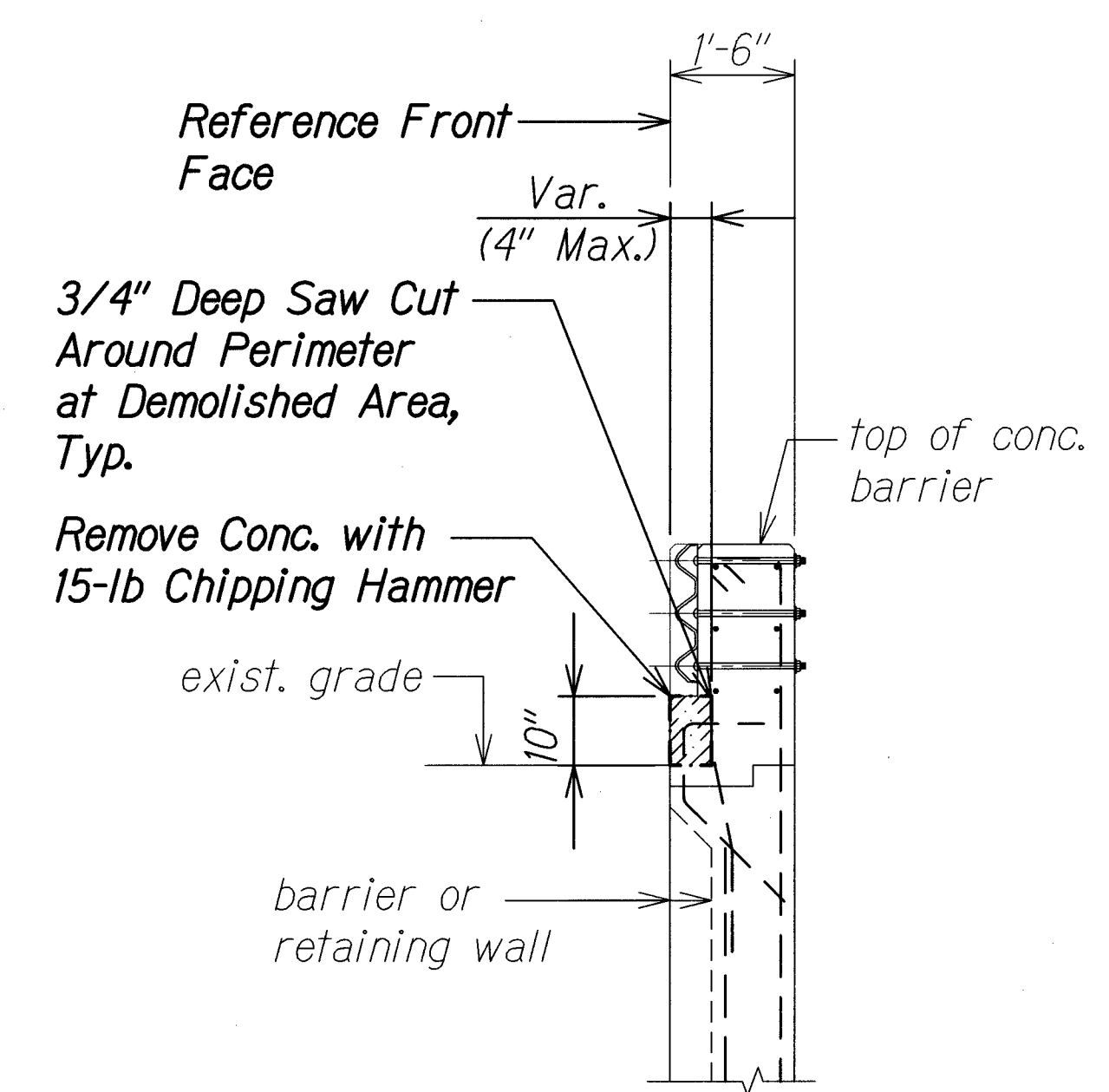
**TYPICAL TYPE I END POST
DEMOLITION PLAN - LOWER PORTION**
Scale: 1/2" = 1'-0"



TYPICAL TYPE I END POST DEMOLITION ELEVATION
Scale: 1/2" = 1'-0"



DEMOLITION SECTION D
Scale: 1/2" = 1'-0"



DEMOLITION SECTION E
Scale: 1/2" = 1'-0"

NOTE:
Existing guardrail may be removed and reinstalled as required to complete construction work

ORIGINAL PLAN	DATE
NOTE BOOK	DESIGNED BY
	QUANTITIES BY
	CHECKED BY

DRAWING NAME: 2100 IMPROVEMENTS-HI-1 SAFETY IMPROVEMENTS PALALAI INTERCHANGE TO WAIKAWA OVERPASS
PLOT TIME: 08-08-18 8:12 AM

THIS WORK WAS PREPARED BY ME OR UNDER MY SUPERVISION.

SIGNATURE: *Calvin T. Miyahara* EXPIRATION DATE OF THE LICENSE: 4-30-20

STATE OF HAWAII
DEPARTMENT OF TRANSPORTATION
HIGHWAYS DIVISION

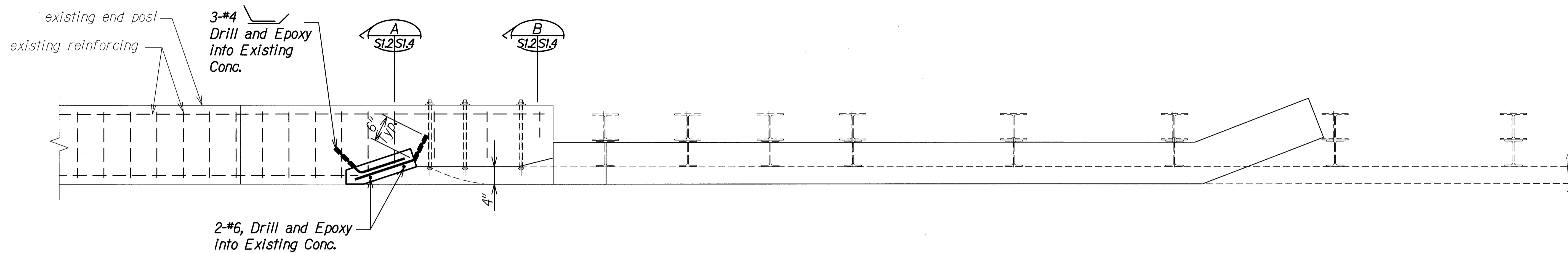
**TYPICAL TYPE I
END POST DEMOLITION**

INTERSTATE ROUTE H-1 SAFETY IMPROVEMENTS
PALALAI INTERCHANGE TO WAIKAWA OVERPASS
FAP NO. HSIP-HI-1(270)

Scale: As Noted Date: July 26, 2018

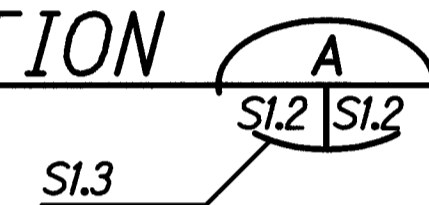
SHEET No. 59 OF 9 SHEETS

FED. ROAD DIST. NO.	STATE	FEDERAL AID PROJ. NO.	FISCAL YEAR	SHEET NO.	TOTAL SHEETS
HAWAII	HAW.	HSIP-HI-1(270)	2018	60	241



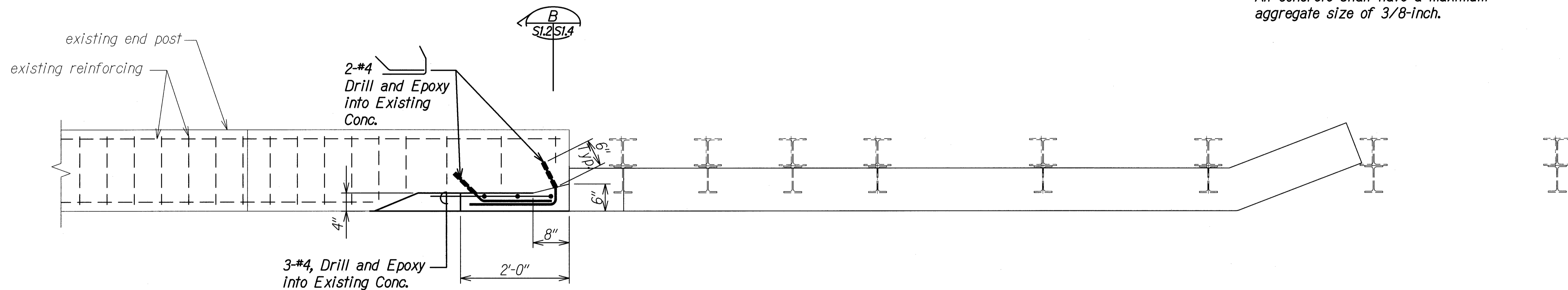
TYPICAL END POST PLAN - UPPER PORTION

Scale: 1" = 1'-0"



NOTE:

All concrete shall have a maximum aggregate size of 3/8-inch.



TYPICAL END POST PLAN - LOWER PORTION

Scale: 1" = 1'-0"



ORIGINAL PLAN	DATE
DESIGNED BY	
DESIGNED BY	
QUANTITIES BY	
CHECKED BY	
No.	

DRAWING NAME: ZAVO ORIGINAL 17-435-HI SAFETY IMPROVEMENTS PALALAI IC-WAIAWA-153101 CAD 08-08-18 HW CATS ES PER VISIT-S1102 ITP ENDPOST DWG PLOT TIME: 08-08-18 8:14 AM

THIS WORK WAS PREPARED BY ME OR UNDER MY SUPERVISION.

Signature

SIGNATURE: _____ EXPIRATION DATE OF THE LICENSE: 4-30-20

STATE OF HAWAII
DEPARTMENT OF TRANSPORTATION
HIGHWAYS DIVISION

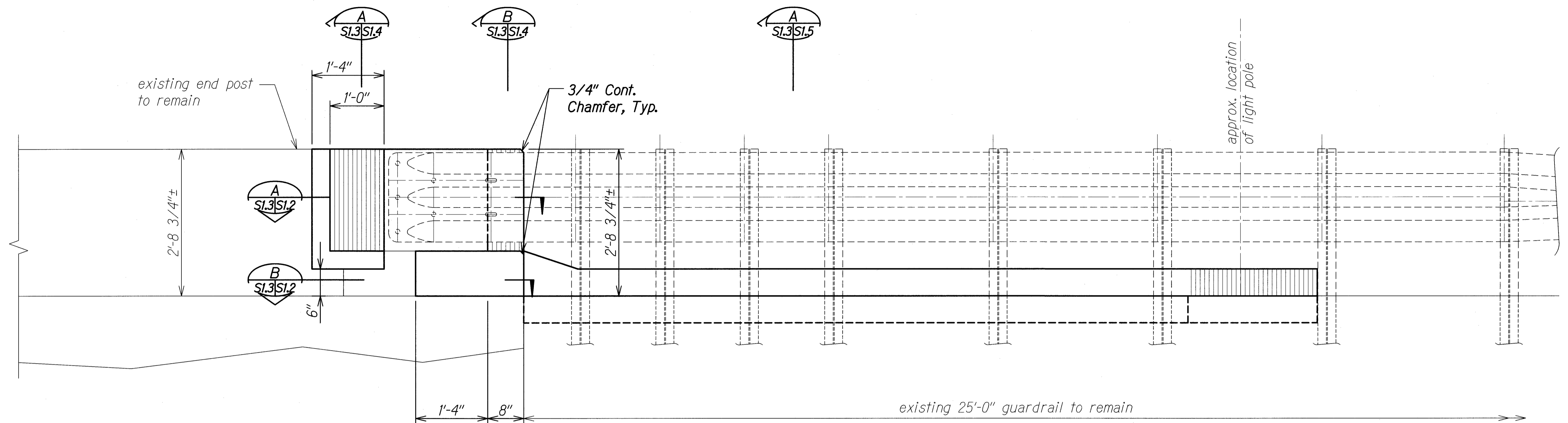
**TYPICAL TYPE I
END POST PLANS**

**INTERSTATE ROUTE H-1 SAFETY IMPROVEMENTS
PALALAI INTERCHANGE TO WAIAWA OVERPASS
FAP NO. HSIP-HI-1(270)**

Scale: As Noted Date: July 26, 2018

SHEET No. SI.2 OF 9 SHEETS

FED. ROAD DIST. NO.	STATE	FEDERAL AID PROJ. NO.	FISCAL YEAR	SHEET NO.	TOTAL SHEETS
HAWAII	HAW.	HSIP-HI-1(270)	2018	61	241



TYPICAL END POST ELEVATION

Scale: 1" = 1'-0"

S22, S32, S42,
S52, S62, S72,
S82


A
S1.3 S1.3

NOTE:

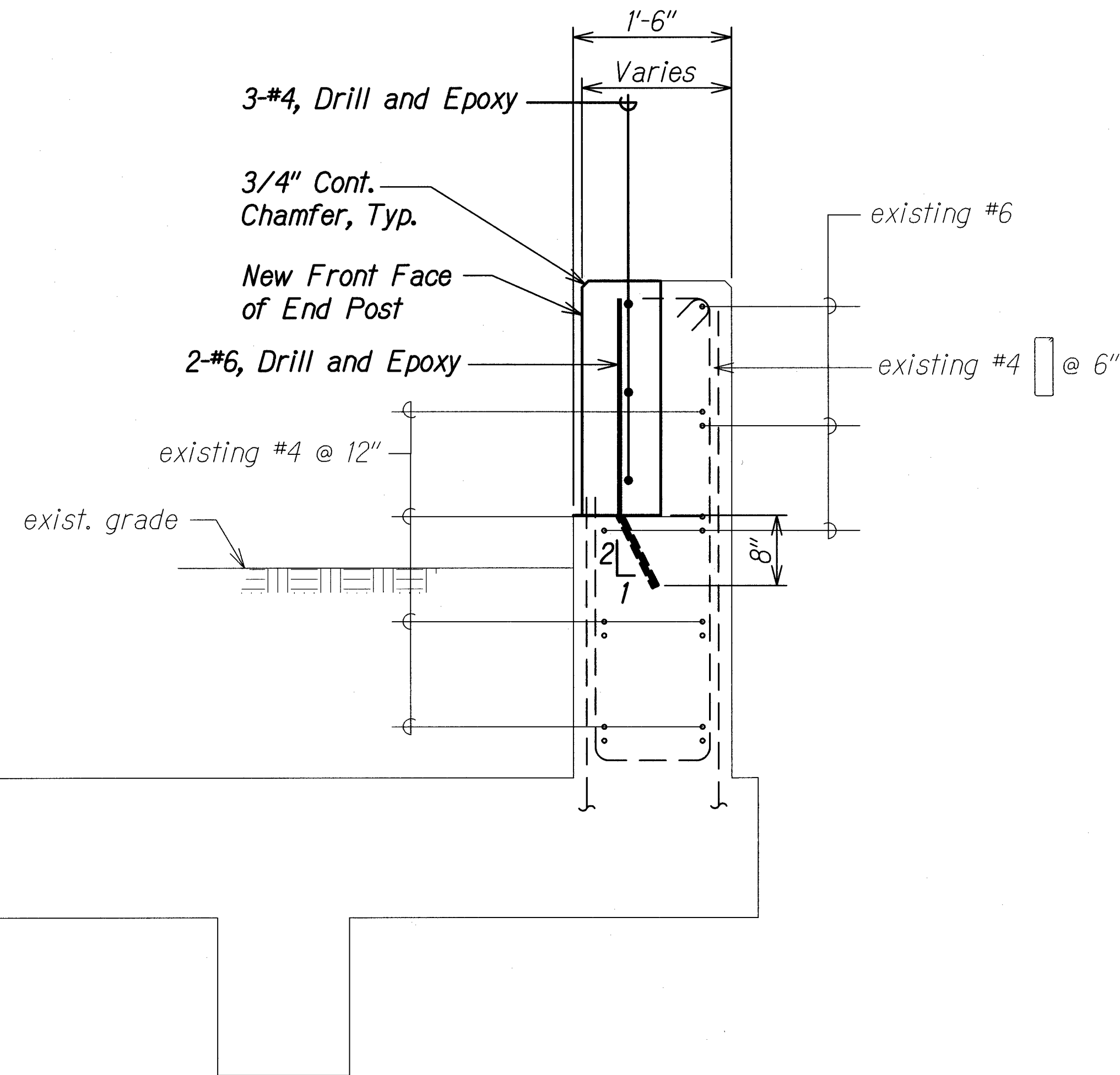
See Sheet S1.5 for additional details.

ORIGINAL PLAN	SURVEY PLOTTED BY	DATE
NOTE BOOK	DRAWN BY	
No.	DESIGNED BY	
	QUANTITIES BY	
	CHECKED BY	

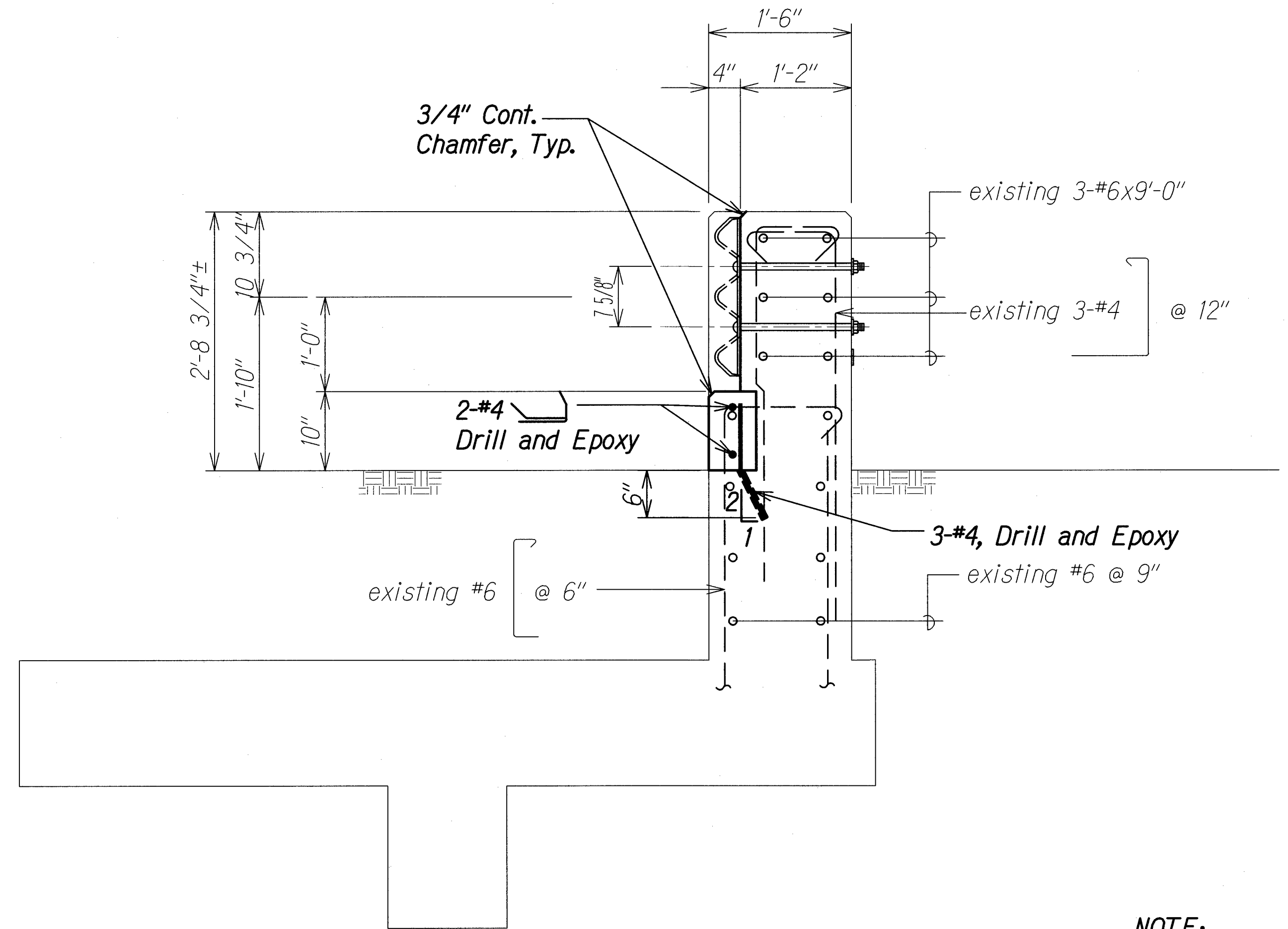
DRAWING NAME: Z:\000\000000\17-035-HI-SAFETY IMPROVEMENTS\PALILAI IC-WAIAWA-MSP\01 CAD\08-08-18 HWY CMTS ITS PDP\HIST-S002 TYP ENDPOST.DWG PLOT TIME: 08-08-18, 8:14 AM

 <p>THIS WORK WAS PREPARED BY ME OR UNDER MY SUPERVISION.</p> <p><i>Calvin T. Miyahara</i></p> <p>SIGNATURE EXPIRATION DATE OF THE LICENSE: 4-30-20</p>	STATE OF HAWAII DEPARTMENT OF TRANSPORTATION HIGHWAYS DIVISION TYPICAL TYPE I END POST ELEVATION INTERSTATE ROUTE HI SAFETY IMPROVEMENTS PALILAI INTERCHANGE TO WAI'AWA OVERPASS FAP NO. HSIP-HI-1(270)	
	Scale: As Noted	Date: July 26, 2018
	SHEET No. S1.3 OF 9 SHEETS	
	61	

FED. ROAD DIST. NO.	STATE	FEDERAL AID PROJ. NO.	FISCAL YEAR	SHEET NO.	TOTAL SHEETS
HAWAII	HAW.	HSIP-HI-1(270)	2018	62	241



SECTION - UPPER PORTION
 Scale: 1" = 1'-0"
 Sl.3, S2.2, S3.2, S4.2, S5.2, S6.2, S7.2, S8.2



SECTION - LOWER PORTION
 Scale: 1" = 1'-0"
 Sl.3, S2.2, S3.2, S4.2, S5.2, S6.2, S7.2, S8.2

NOTE:

Provide holes in new concrete to match existing bolt holes.

ORIGINAL PLAN	DATE
NOTE BOOK	DESIGNED BY
No.	CHECKED BY

DRAWING NAME: 2A-03 OVERPASS/VI-035-HI SAFETY IMPROVEMENTS PALAILAI IC-WAIAWA OVERPASS-01 CAD:08-08-18 HW: CMIS ES PLOT:11/11/18 5:01:02 DTP ENDPOST.DWG PLOT TIME: 08-08-18 8:14 AM

THIS WORK WAS PREPARED BY ME OR UNDER MY SUPERVISION.

Signature

SIGNATURE: _____ EXPIRATION DATE OF THE LICENSE: 4-30-20

STATE OF HAWAII
 DEPARTMENT OF TRANSPORTATION
 HIGHWAYS DIVISION

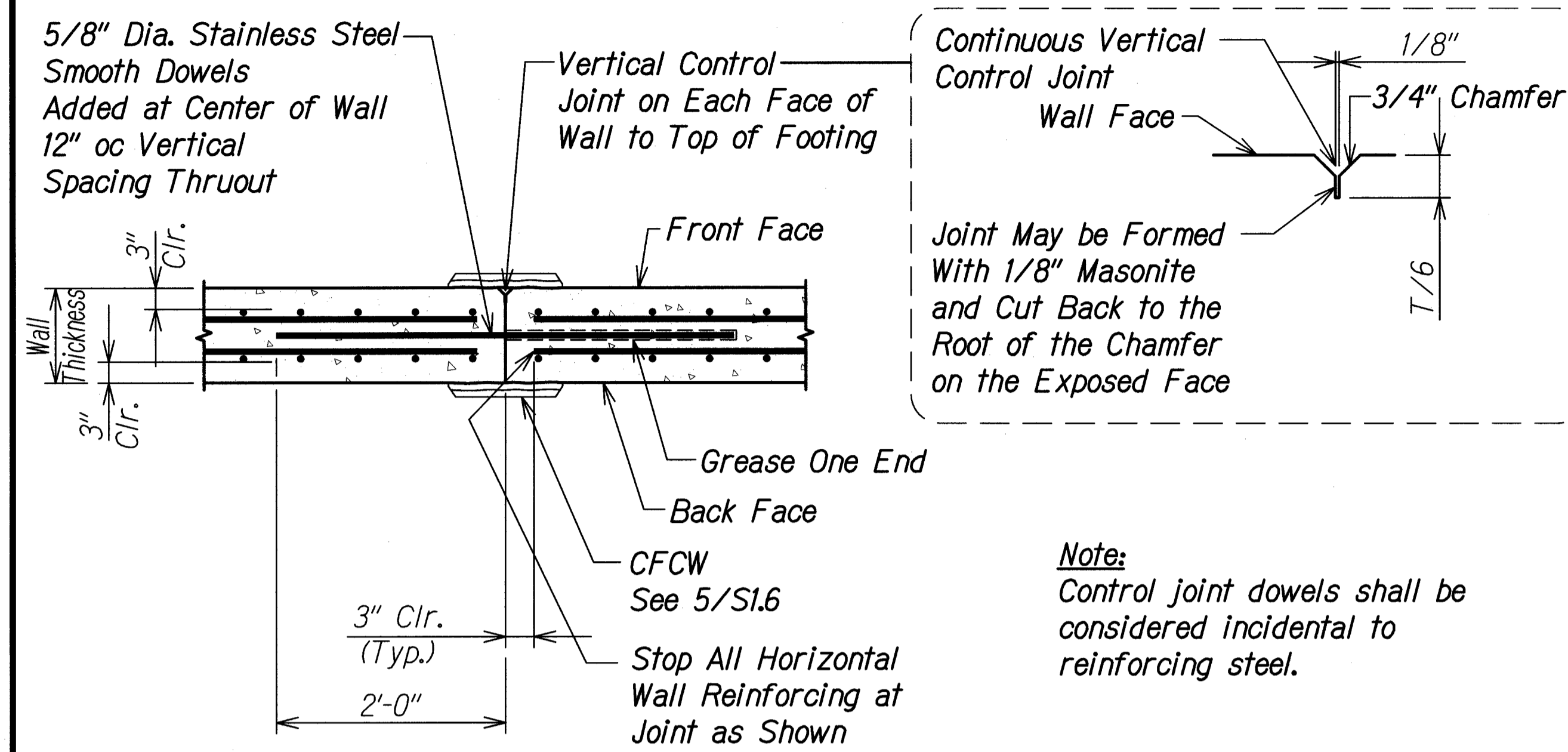
**TYPICAL TYPE I
 END POST SECTIONS**

**INTERSTATE ROUTE HI-1 SAFETY IMPROVEMENTS
 PALAILAI INTERCHANGE TO WAIAWA OVERPASS
 FAP NO. HSIP-HI-1(270)**

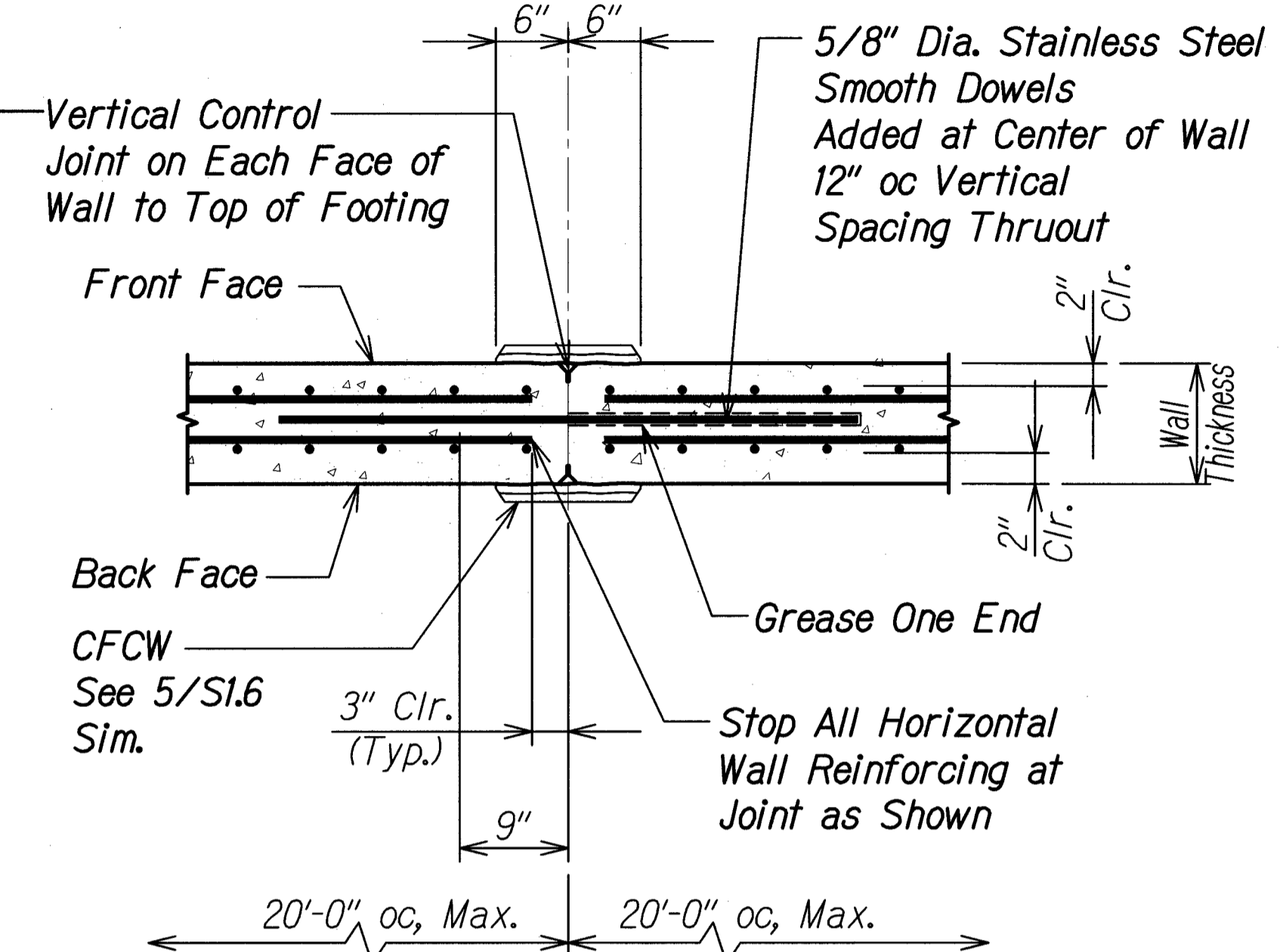
Scale: As Noted Date: July 26, 2018

SHEET No. **Sl.4** OF 9 SHEETS

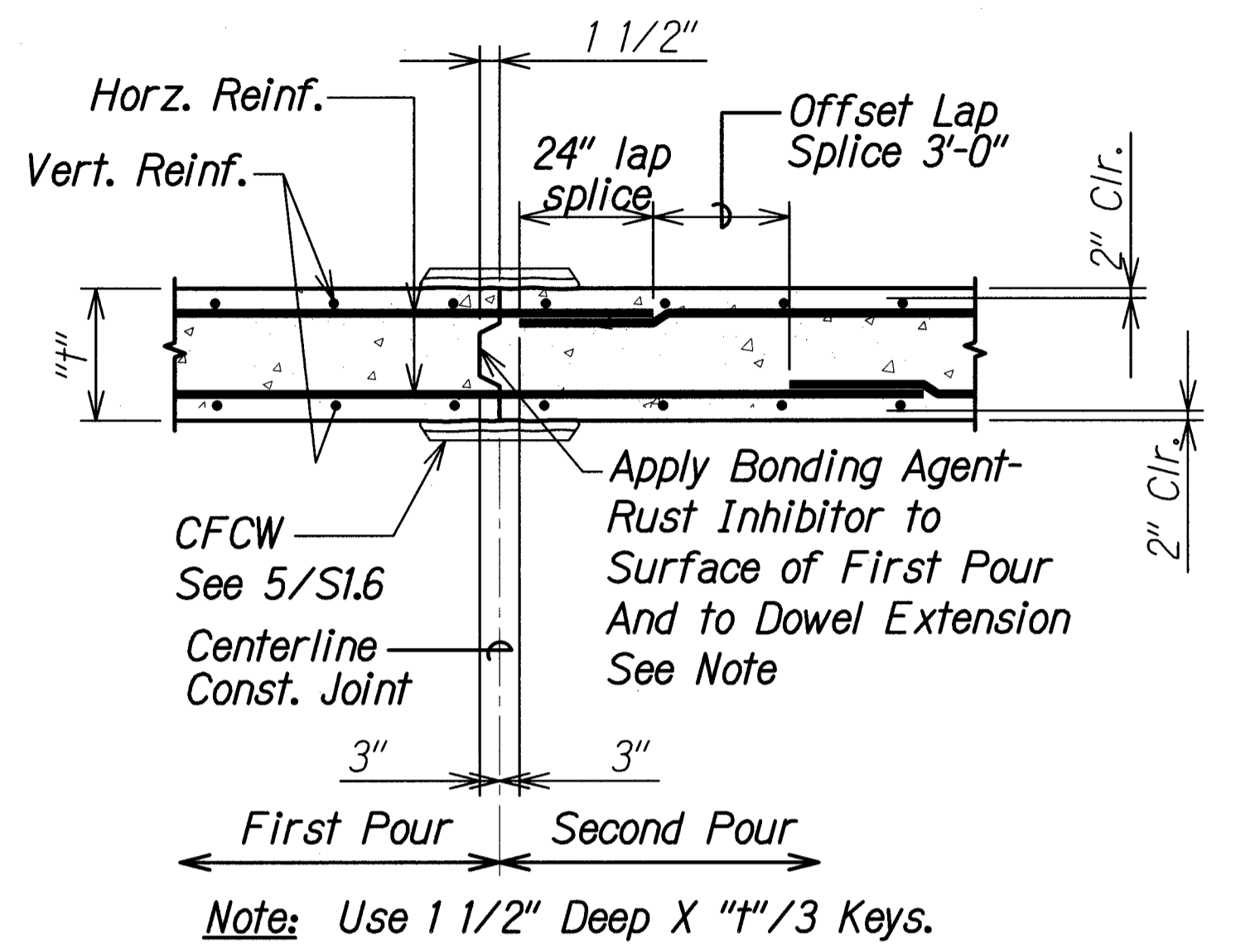
FED. ROAD DIST. NO.	STATE	FEDERAL AID PROJ. NO.	FISCAL YEAR	SHEET NO.	TOTAL SHEETS
HAWAII	HAW.	HSIP-HI-1(270)	2018	64	241



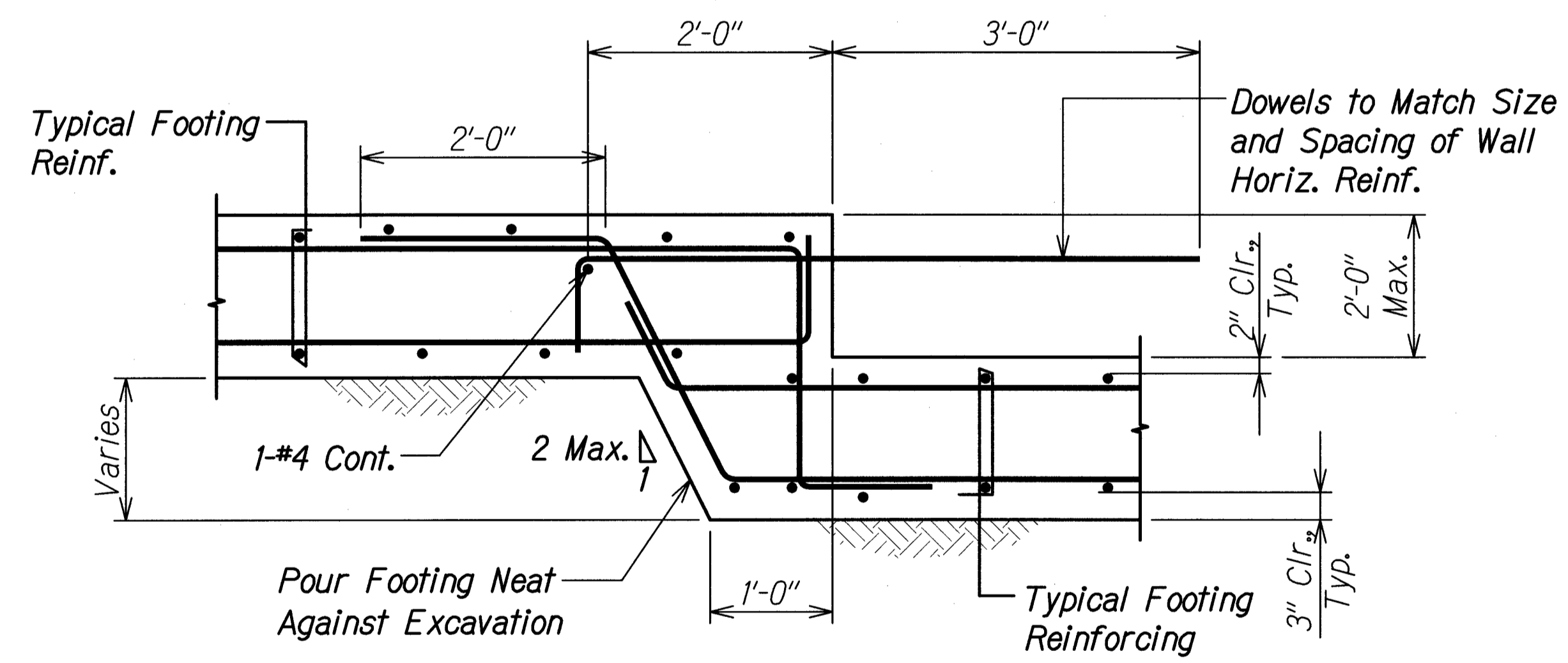
CONSTRUCTION JOINT AT CONTROL JOINT LOCATION (1)
Scale: 1" = 1'-0" S1.6 S1.6



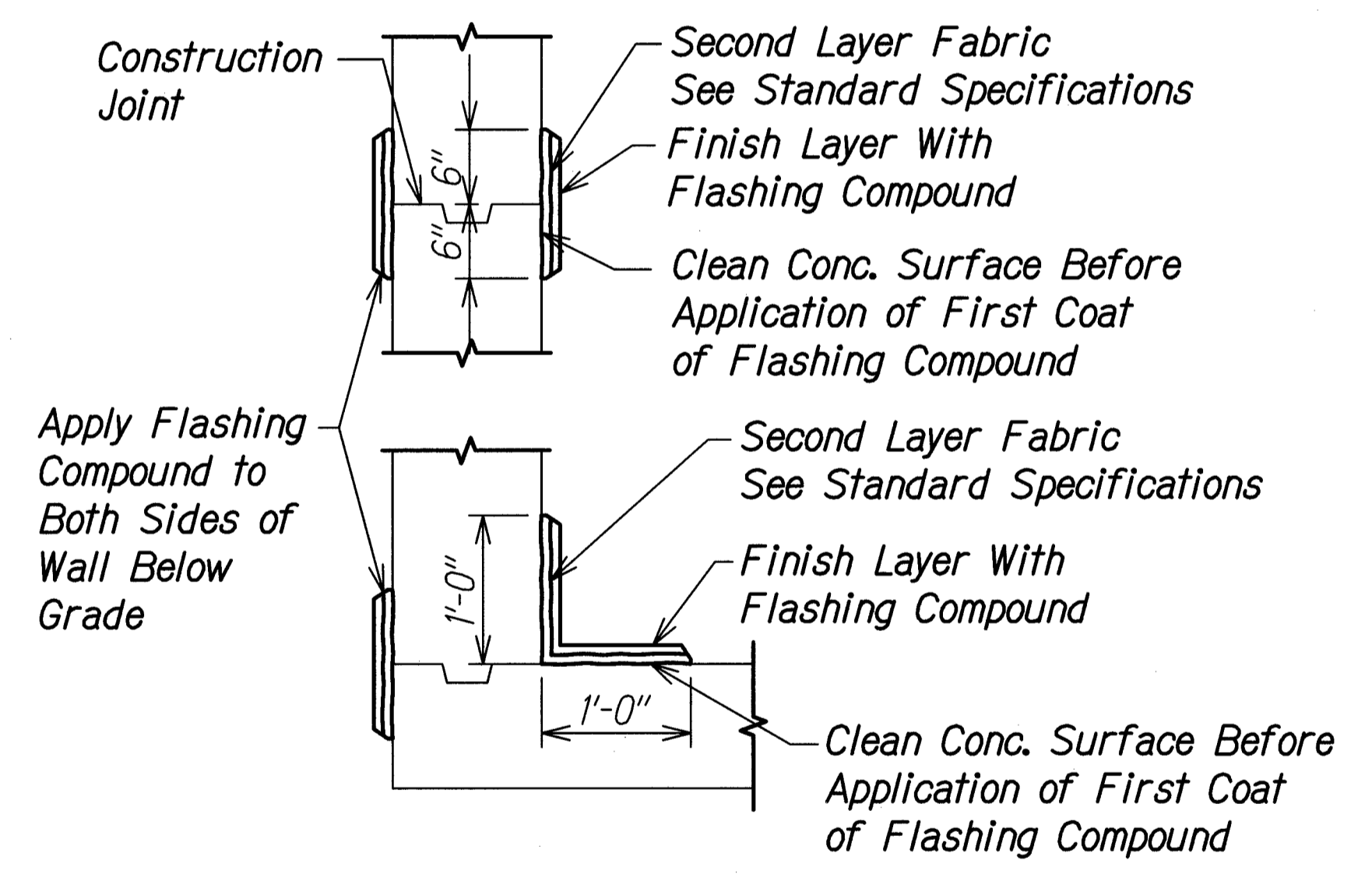
TYPICAL WALL VERTICAL CONTROL JOINT DETAIL (2)
Scale: 1" = 1'-0" S1.6 S1.6



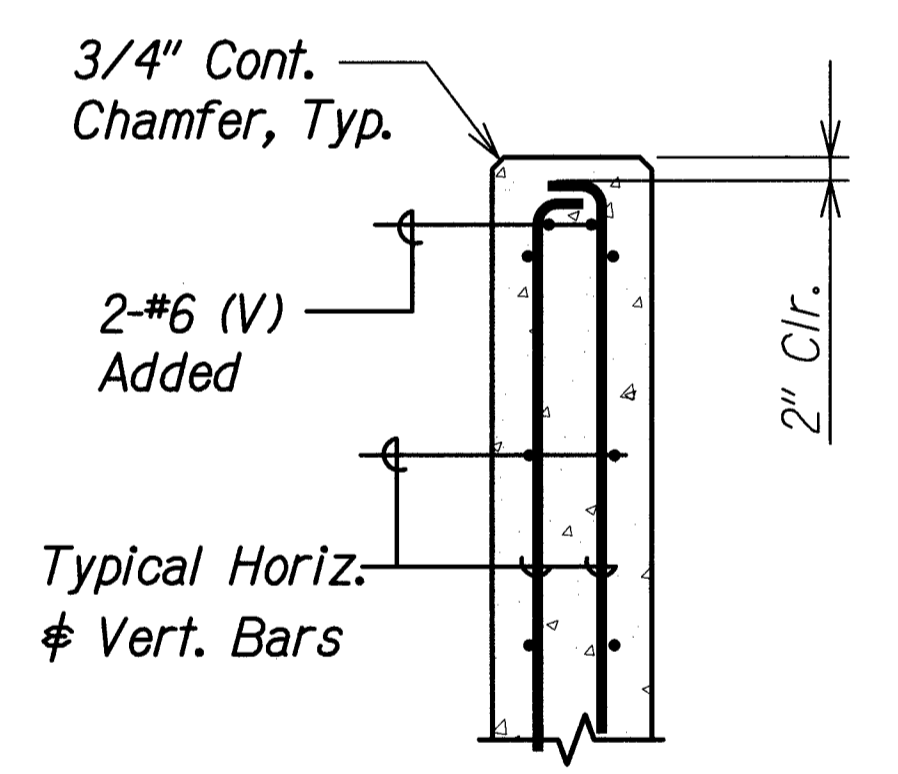
TYPICAL WALL VERTICAL CONSTRUCTION JOINT DETAIL (3)
Scale: 1" = 1'-0" S1.6 S1.6



TYPICAL WALL STEP FOOTING DETAIL (4)
Scale: 1" = 1'-0" S1.6 S1.6



TYPICAL CONTINUOUS FLASHING COMPOUND WATERPROOFING (CFCW) (5)
Scale: 1" = 1'-0" S2.6 S1.6 S1.6



CONCRETE WALL ENDS (6)
Scale: 1" = 1'-0" S1.6 S1.6

DATE	_____
SURVEY PLOTTED BY	_____
DRAWN BY	_____
TRACED BY	_____
CHECKED BY	_____
ORIGINAL PLAN	_____
NOTE BOOK	_____
No.	_____

DRAWING NAME: 2A00 ONCONG17-035-HI SAFETY IMPROVEMENTS PALALAI IC-MAAMA-WSP01 CAD:08-08-18 HWY CMIS FS FORVHIST-S0106 TYP DLS.DWG PLOT TIME: 08-08-18 8:15 AM

THIS WORK WAS PREPARED BY ME OR UNDER MY SUPERVISION.

Signature

EXPIRATION DATE OF THE LICENSE: 4-30-20

STATE OF HAWAII
DEPARTMENT OF TRANSPORTATION
HIGHWAYS DIVISION

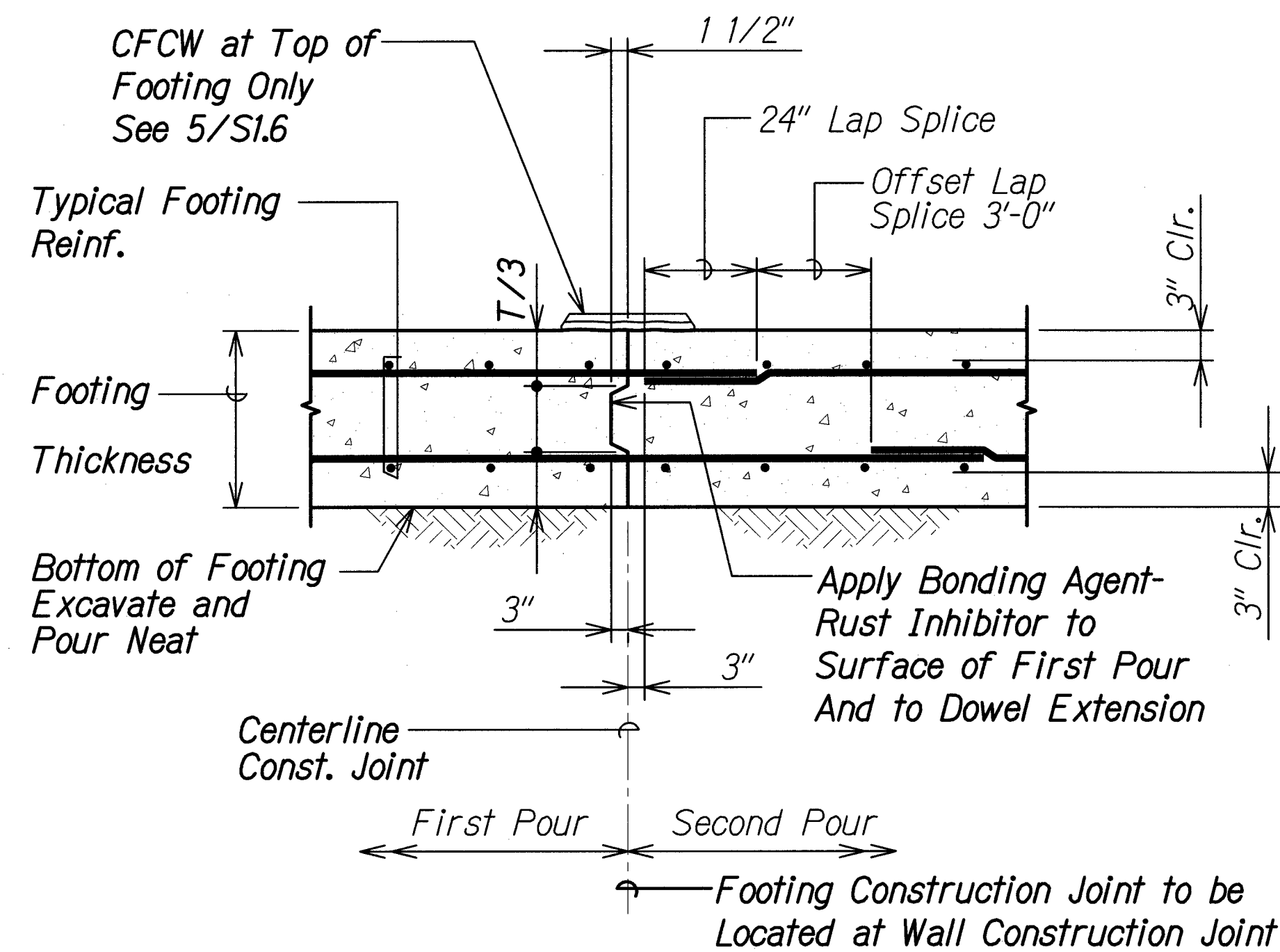
TYPICAL DETAILS

**INTERSTATE ROUTE HI SAFETY IMPROVEMENTS
PALALAI INTERCHANGE TO WAIAWA OVERPASS
FAP NO. HSIP-HI-1(270)**

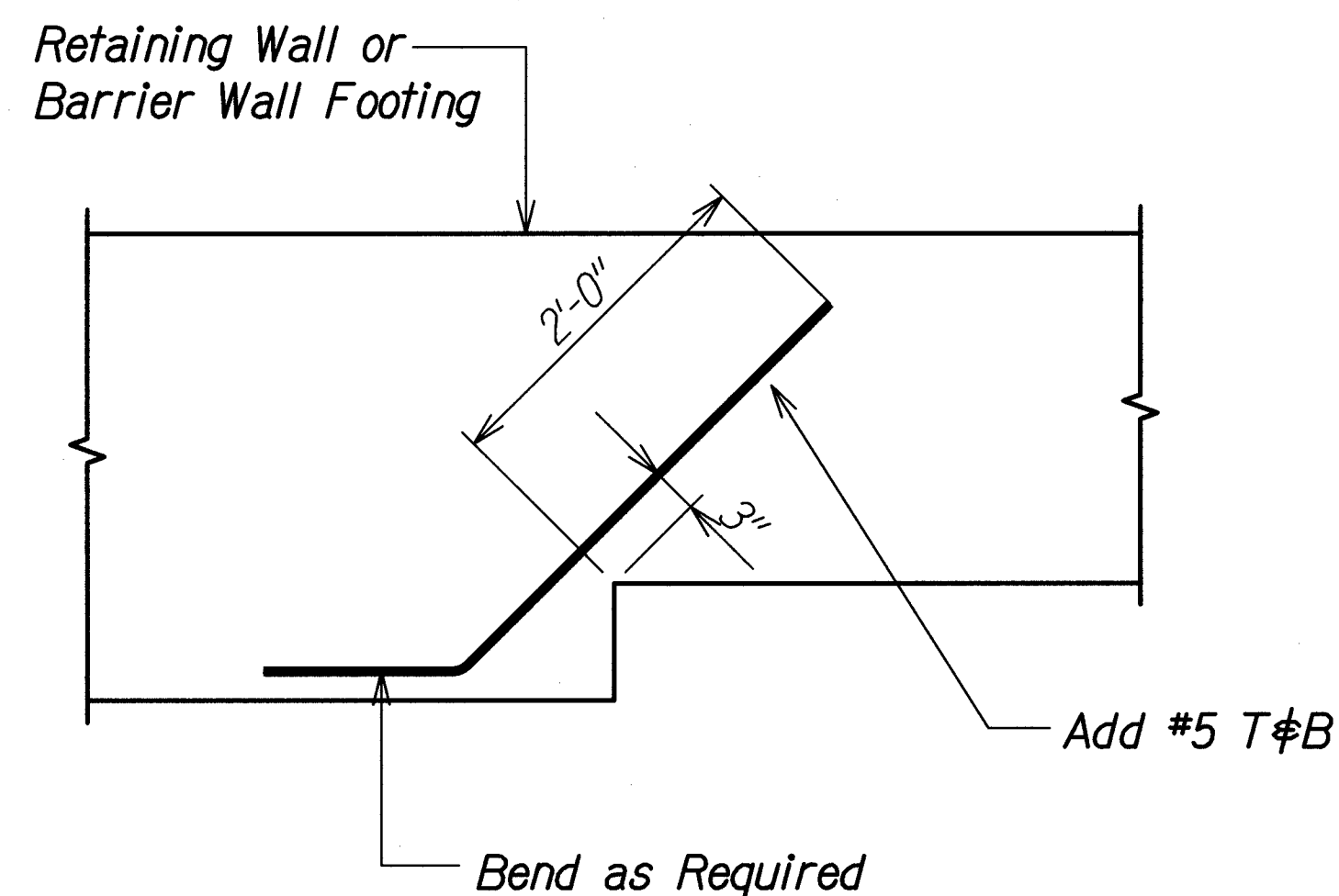
Scale: As Noted Date: July 26, 2018

SHEET No. **S1.6** OF **9** SHEETS

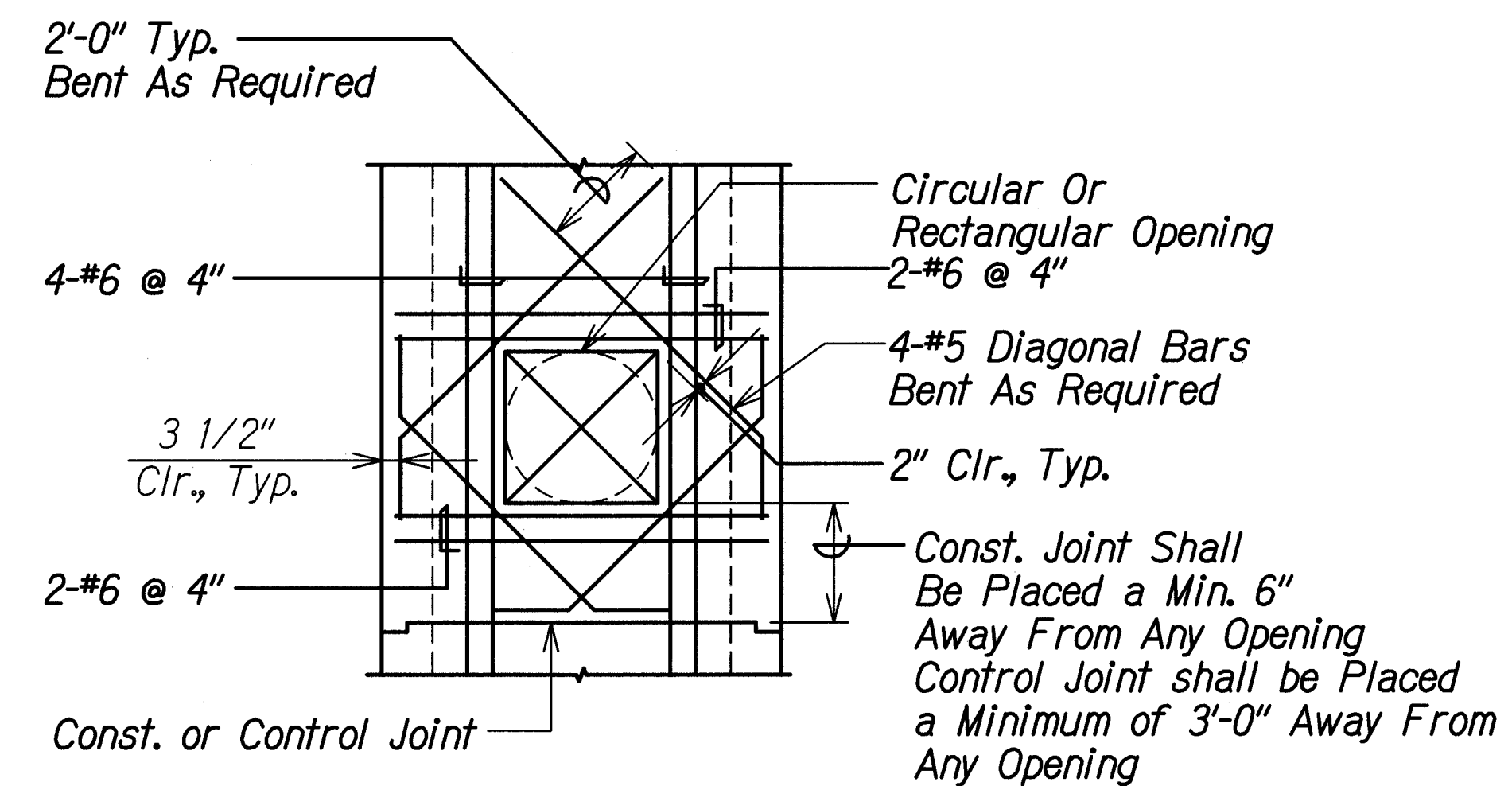
FED. ROAD DIST. NO.	STATE	FEDERAL AID PROJ. NO.	FISCAL YEAR	SHEET NO.	TOTAL SHEETS
HAWAII	HAW.	HSIP-HI-1(K270)	2018	65	241



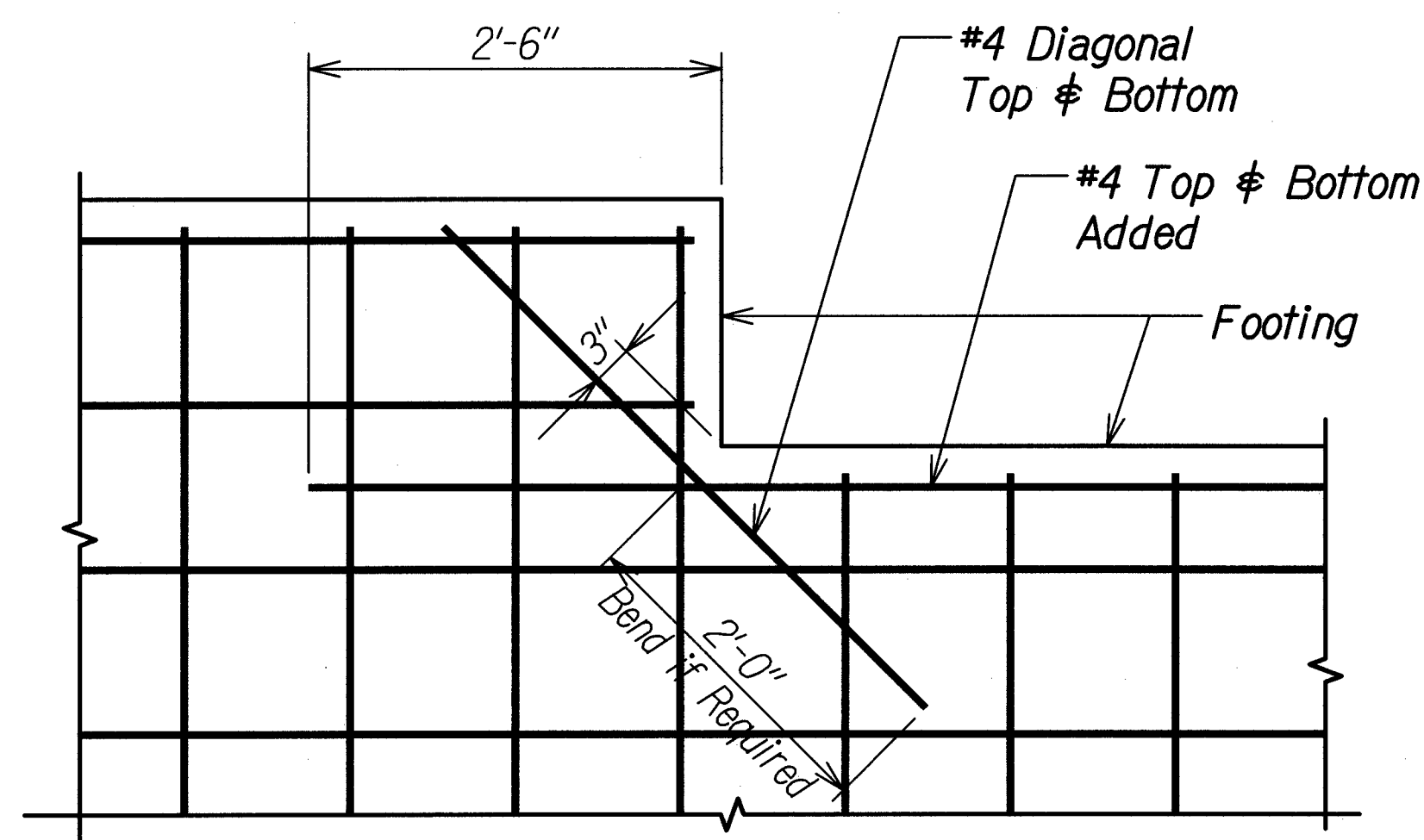
TYPICAL FOOTING CONSTRUCTION JOINT DETAIL 1
Scale: 1" = 1'-0" SI.7 SI.7



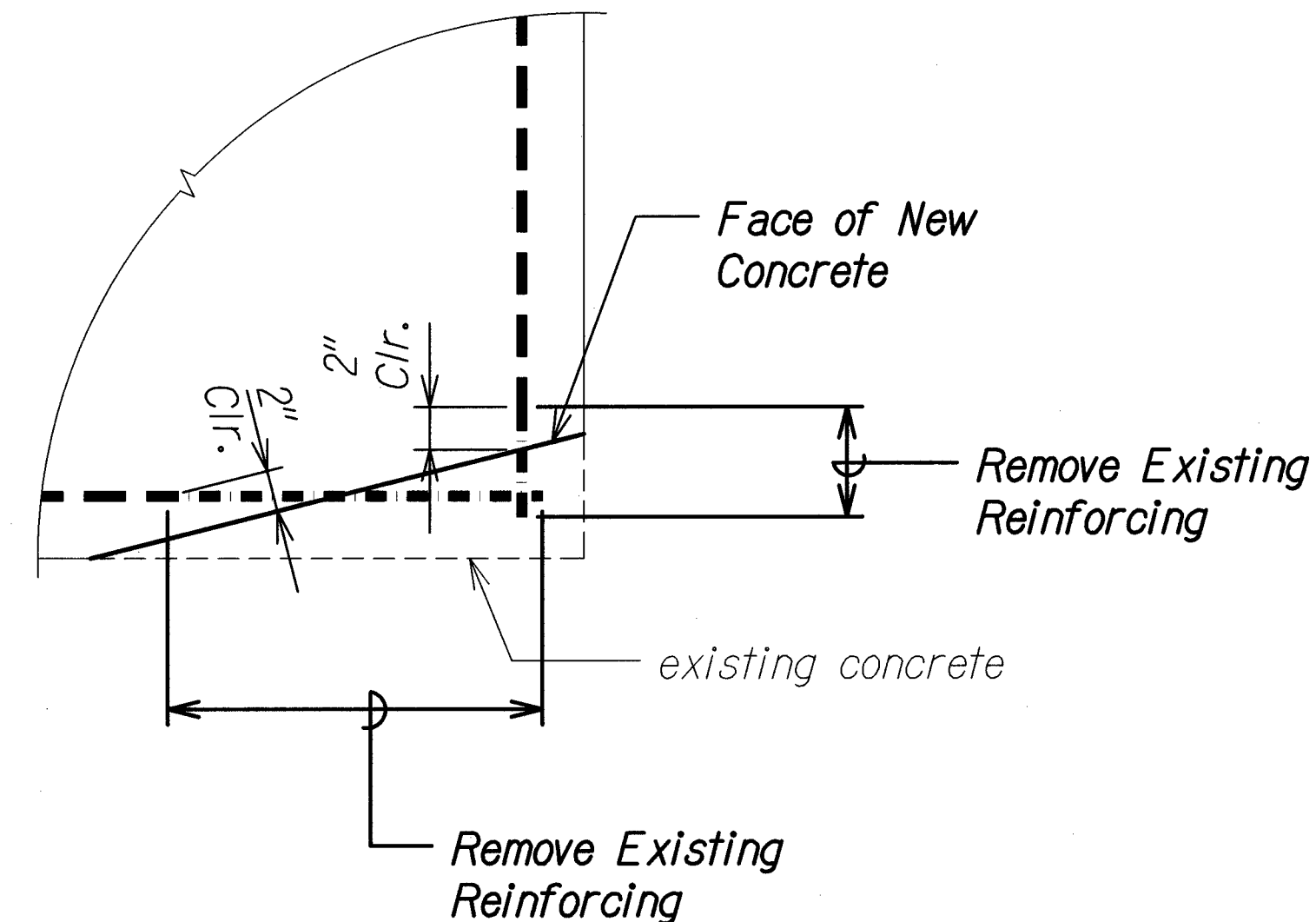
TYPICAL FOOTING CORNER PLAN DETAIL 2
Scale: 1" = 1'-0" SI.7 SI.7



ADDED REINFORCING FOR OPENING 3
Scale: 1/2" = 1'-0" SI.7 SI.7



TYPICAL FOOTING CORNER 4
Scale: 1" = 1'-0" SI.7 SI.7



TYPICAL REINFORCING DEMOLITION DETAIL 5
Scale: 1 1/2" = 1'-0" SI.7 SI.7

DATE	_____
SURVEY DICTATED BY	_____
DRAWN BY	_____
DESIGNED BY	_____
QUANTITIES BY	_____
CHECKED BY	_____
ORIGINAL PLAN	_____
NOTE BOOK	_____
No.	_____

DRAWING NAME: Z:\00_000000\17-035-HI-SAFETY IMPROVEMENTS PALAILAI IC-MAWA-WSP\01 CAD\08-08-18 HWY CMIS ES-PDF\HSET-50106 TYP DTLS.DWG PLOT TIME: 08-08-18 8:15 AM

THIS WORK WAS PREPARED BY ME OR UNDER MY SUPERVISION.

Calvin T. Miyahara

SIGNATURE EXPIRATION DATE OF THE LICENSE 4-30-20

STATE OF HAWAII
DEPARTMENT OF TRANSPORTATION
HIGHWAYS DIVISION

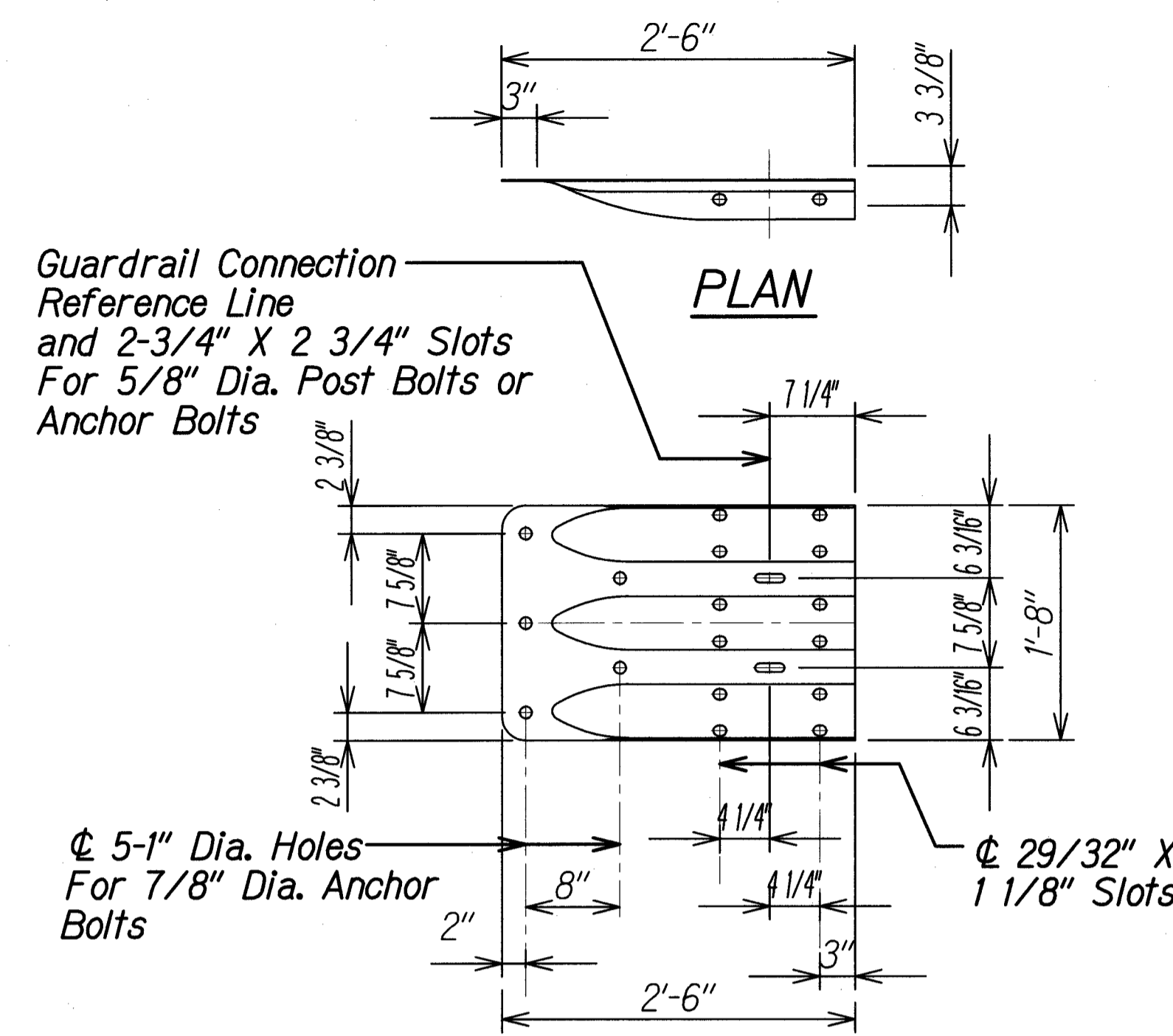
TYPICAL DETAILS

**INTERSTATE ROUTE H-1 SAFETY IMPROVEMENTS
PALAILAI INTERCHANGE TO WAIAWA OVERPASS
FAP NO. HSIP-HI-1(K270)**

Scale: As Noted Date: July 26, 2018

SHEET No. **SI.7** OF **9** SHEETS

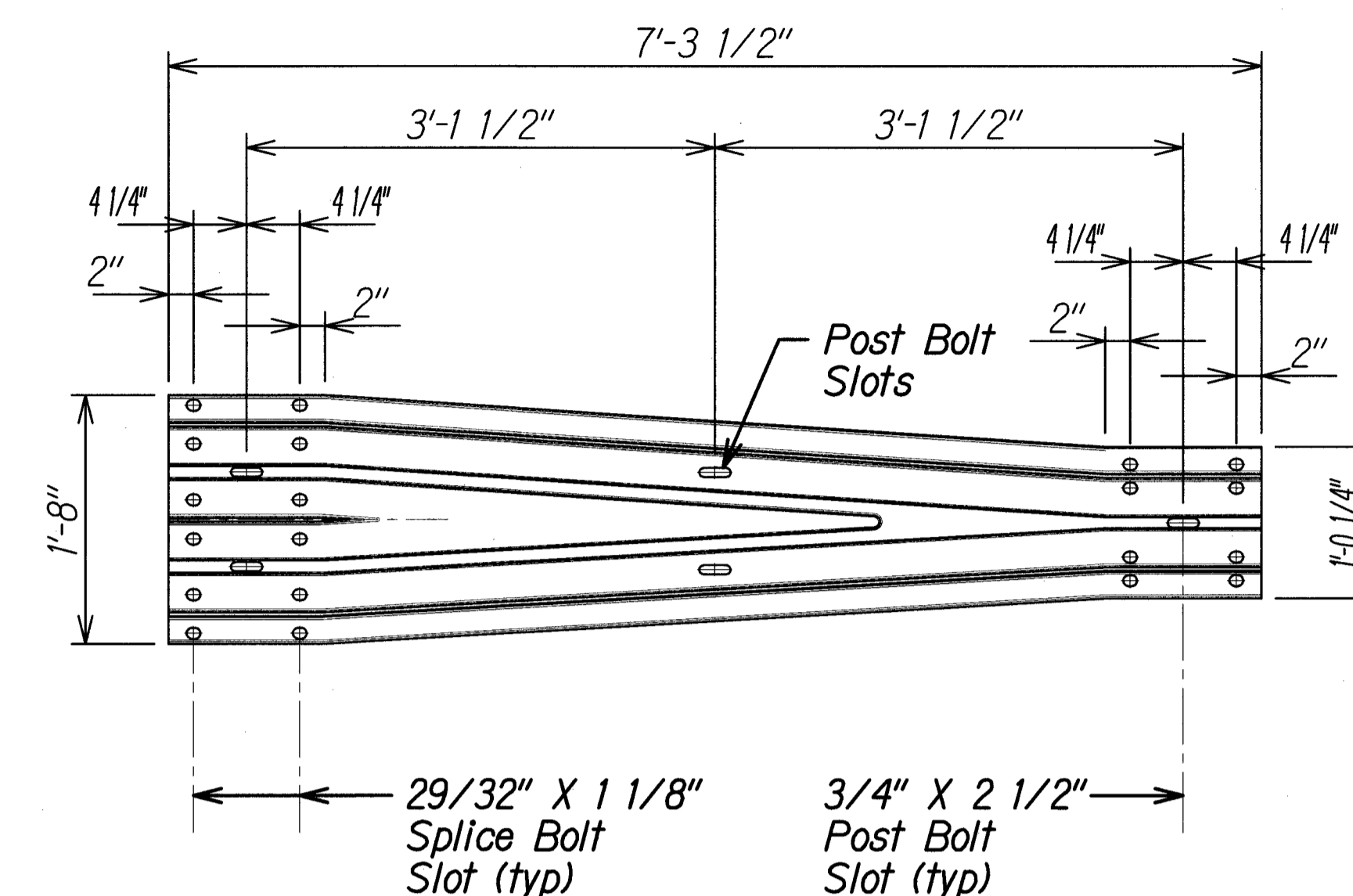
FED. ROAD DIST. NO.	STATE	FEDERAL AID PROJ. NO.	FISCAL YEAR	SHEET NO.	TOTAL SHEETS
HAWAII	HAW.	HSIP-HI-1(K270)	2018	66	241



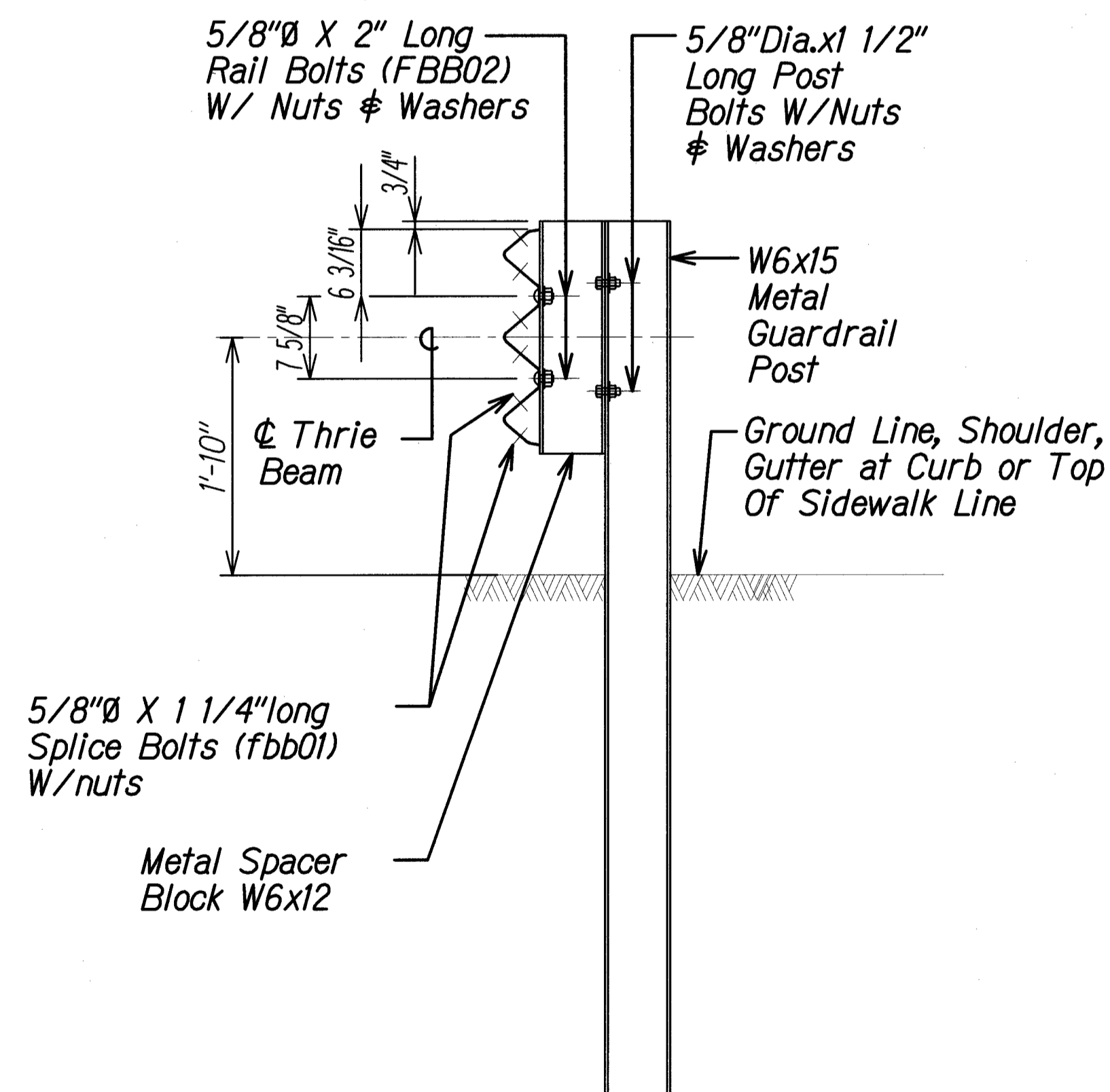
(Use At Posts Where Splices Do Not Occur.)

BACKUP PLATE
Scale: 3/4" = 1'-0"

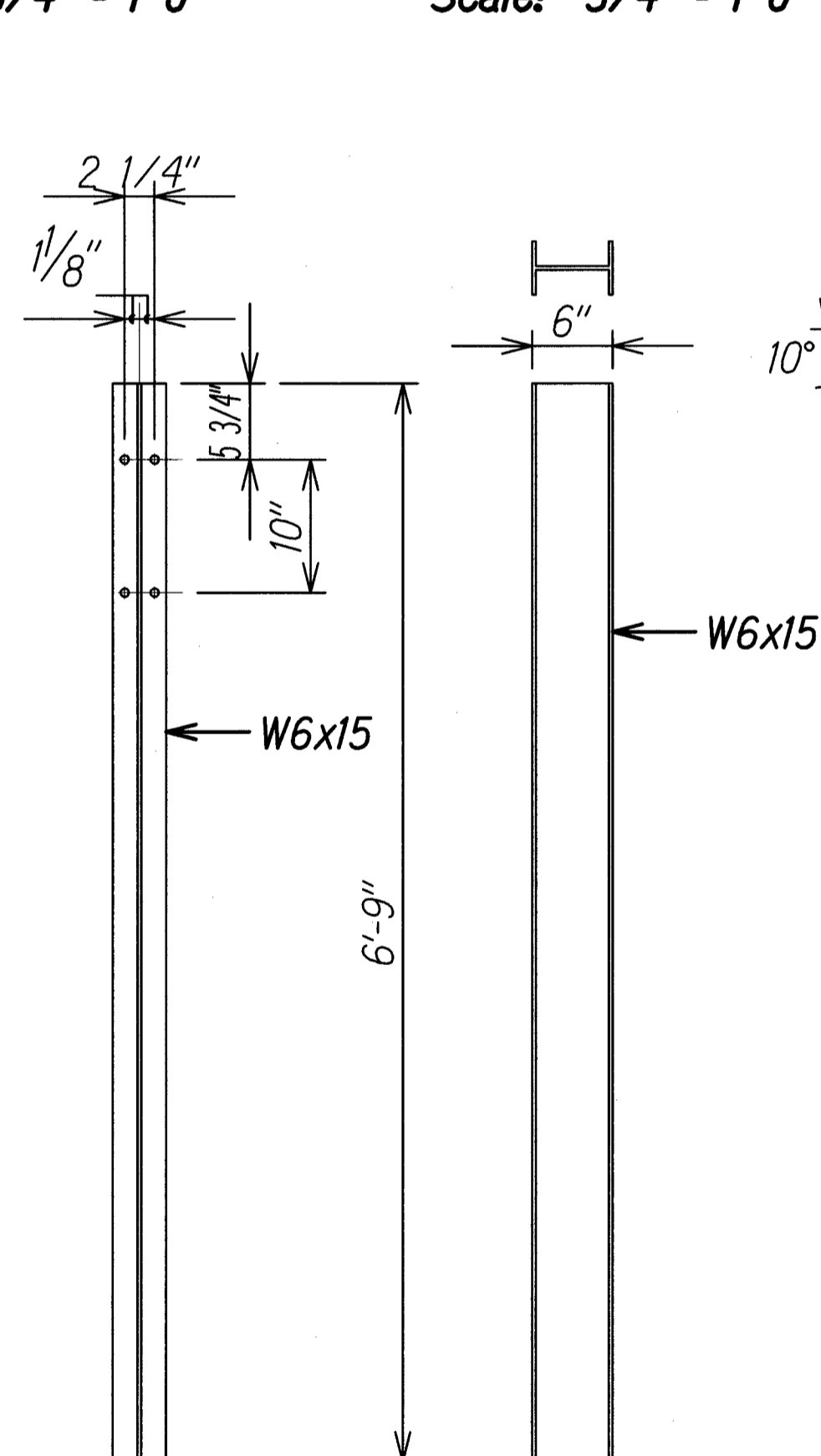
RAIL SPLICE
Scale: 3/4" = 1'-0"



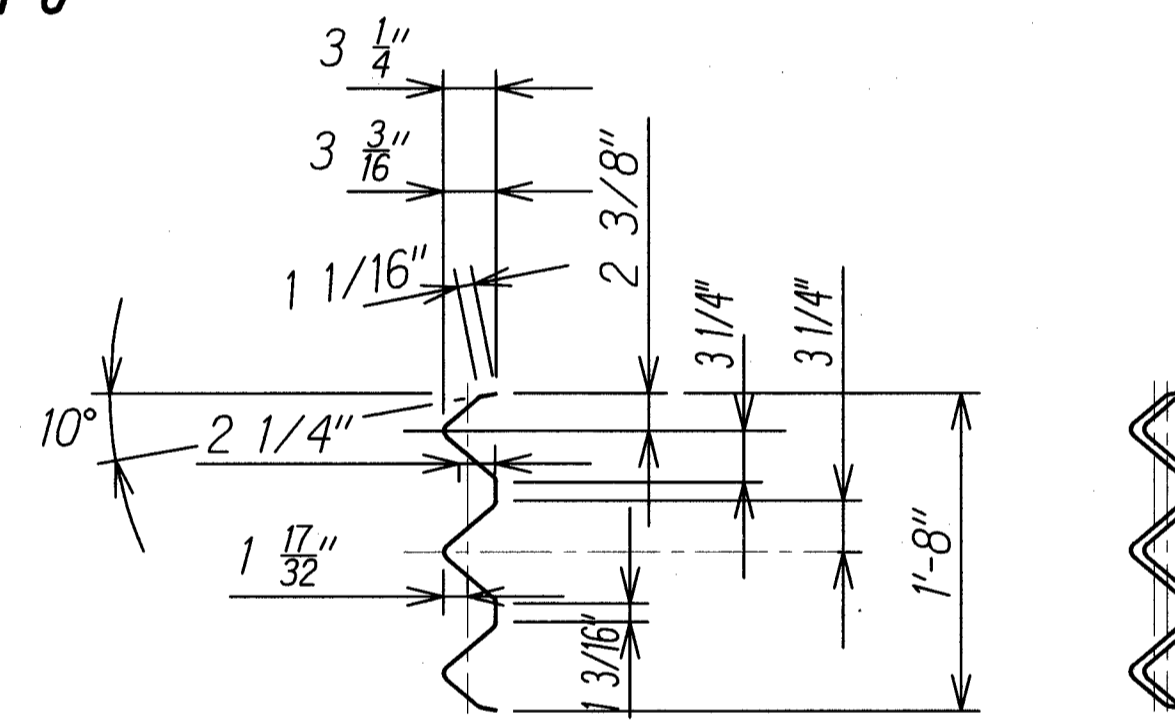
TRANSITION SECTION
Scale: 3/4" = 1'-0"



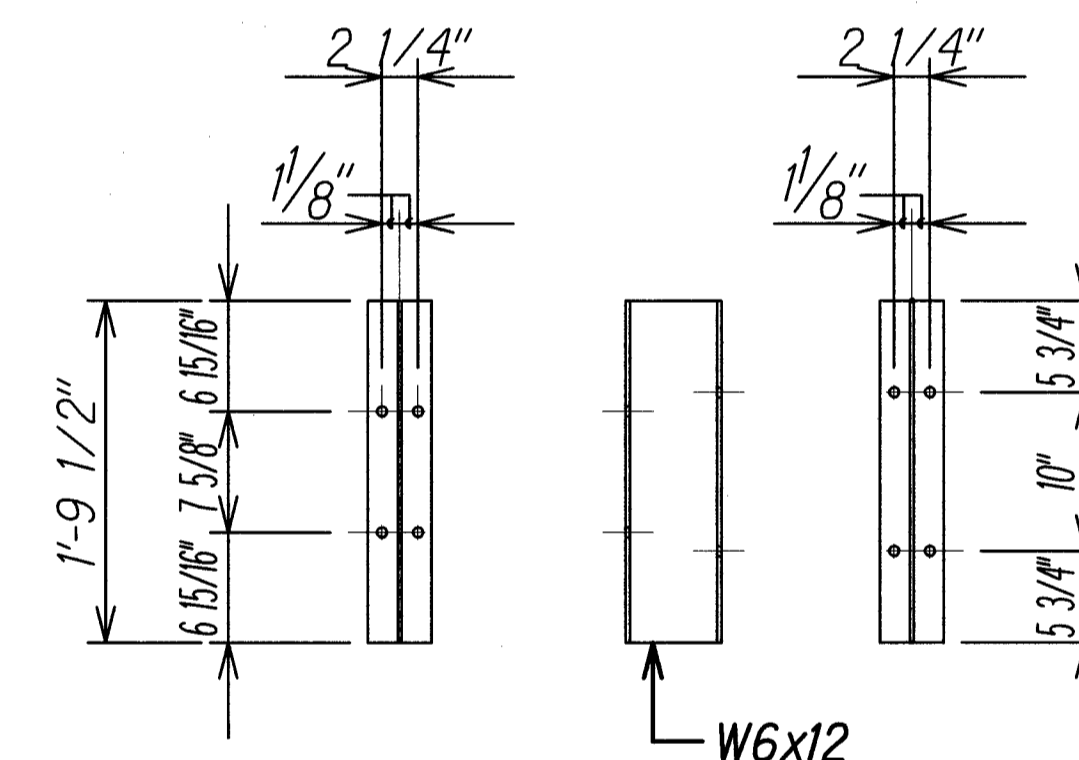
TYPICAL SECTION
(METAL GUARDRAIL ON METAL POST WITH METAL SPACER BLOCK)
Scale: 3/4" = 1'-0"



POST DETAIL
Scale: 3/4" = 1'-0"



SECTION THRU RAIL ELEMENT
Scale: 3/4" = 1'-0"



SPACER BLOCK DETAILS
Scale: 3/4" = 1'-0"

METAL GUARDRAIL TYPE 3 THRIE BEAM AND APPURTENANCES DETAILS

THIS WORK WAS PREPARED BY ME OR UNDER MY SUPERVISION.

Signature: *Calvin T. Miyahara*

EXPIRATION DATE OF THE LICENSE: 4-30-20

STATE OF HAWAII
DEPARTMENT OF TRANSPORTATION
HIGHWAYS DIVISION

STANDARD DETAILS
GUARDRAIL END POST

INTERSTATE ROUTE H-1 SAFETY IMPROVEMENTS
PALAILAI INTERCHANGE TO WAIKAWA OVERPASS
FAP NO. HSIP-HI-1(K270)

Scale: As Noted Date: July 26, 2018

SHEET No. 118 OF 9 SHEETS

