

FED. ROAD DIST. NO.	STATE	PROJ. NO.	FISCAL YEAR	SHEET NO.	TOTAL SHEETS
HAWAII	HAW.	HIE-01-11M	2012	14	49

- NOTES:**
- Contractor shall stake out exact locations of all Soil Nails prior to drilling. Engineer will verify locations in the field. Special caution shall be taken for Soil Nail columns 1 to 6 to avoid conflict with existing building columns and footings. See Table X this Sheet and Note 12 of Shotcrete Wall General Notes on Sht. No. CN-1.
 - For azimuth of Drilling direction of Soil Nail, See Sht. No. SN-3.
 - For Locations and Elevations of Soil Nails, See Sht. No. SN-3.
 - For Limits of Turf Reinforcement Mat (TRM), See Sht. No. SW-3.
 - The TRM shall be installed per Manufacturer's recommendations.
 - For Details of Geocomposite Drain placement, See Sht. No. SW-1.
 - During construction of soil nails in the Soil Nail Columns 3, 4, 10, 11, 28, 29, 31, 33, 34, 36, and 37, the Contractor shall exercise extreme caution to maintain the soil nail drilling holes without collapsing the holes, so as to avoid undermining the supporting ground under the existing building footings.
 - Pre-Production Soil Nail Length at Sta. 305+40 = 25'

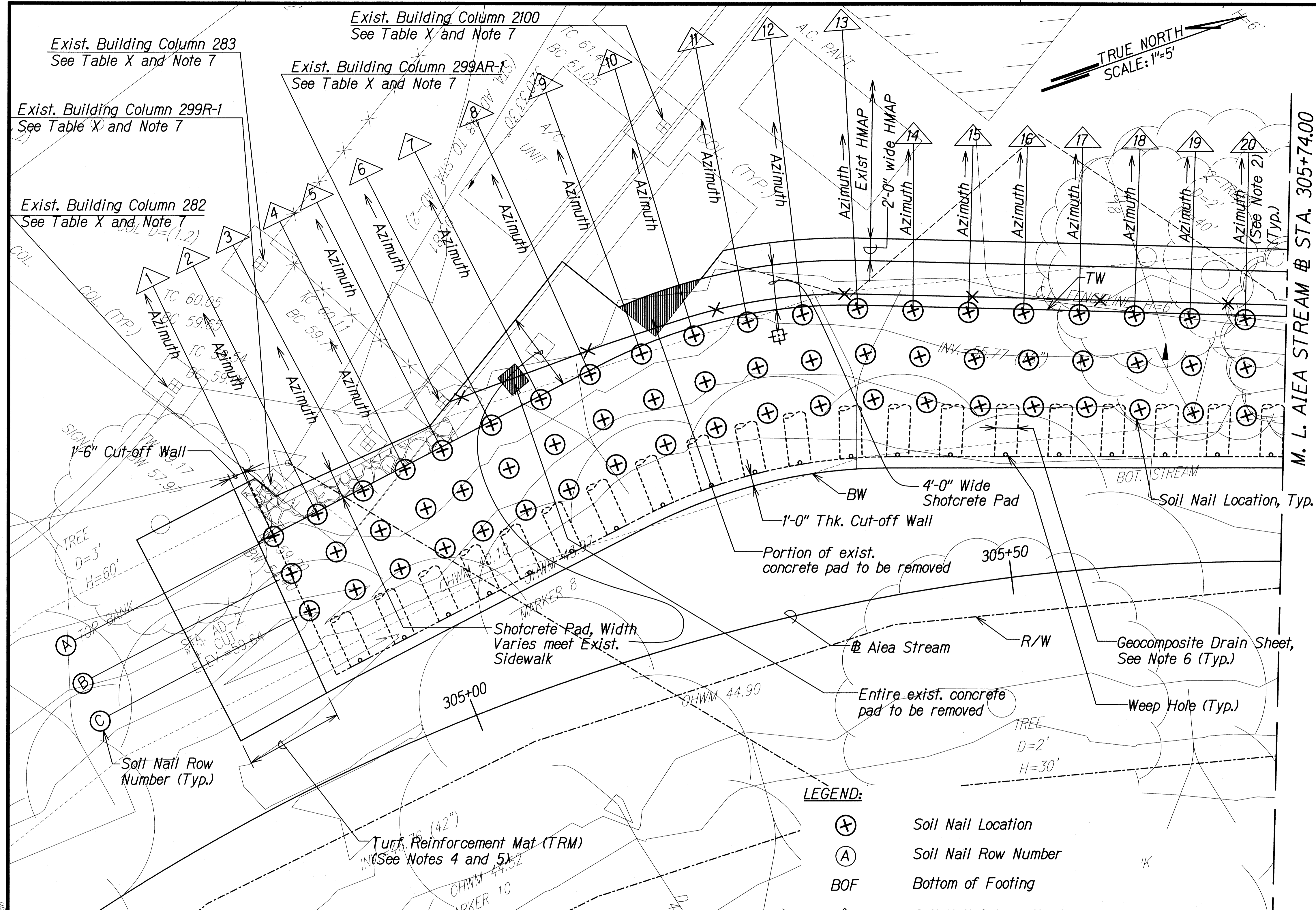
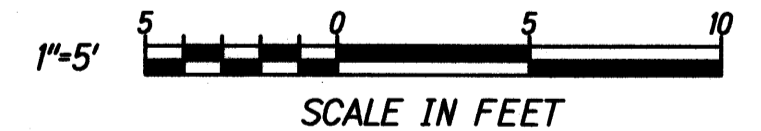


TABLE X (For Reference only)

Exist Building Column	Column Size	Footing Size	BOF Elev.
299R-1	1'-0"±x1'-0"±	2'-6"±x2'-6"±x10"± thk.	40.00±
299AR-1	1'-0"±x1'-0"±	5'-2"±x5'-2"±x1'-2"± thk.	40.00±
282	1'-0"±x1'-2"±	4'-3"±x4'-3"±x1'-0"± thk.	40.00±
283	1'-2"∅	5'-0"±x5'-0"±x1'-1"± thk.	56.17±
2100	1'-0"±x1'-0"±	5'-4"±x5'-4"±x1'-2"± thk.	57.00±
301	1'-0" x1'-0"±	5'-8"±x5'-8"±x1'-3"± thk.	59.00±
301E4	1'-0" x1'-0"±	5'-8" x5'-8"±x1'-3"± thk.	66.00±

- LEGEND:**
- ⊕ Soil Nail Location
 - Ⓐ Soil Nail Row Number
 - BOF Bottom of Footing
 - 20 Soil Nail Column Number
 - ⊕ Pre-Production Soil Nail (See Sht. No. SW-7)
 - TW Top of Wall
 - BW Bottom of Wall
 - HMAP Hot Mix Asphalt Pavement
 - ×-× 6' Chain Link Fence



DESIGNED BY	DATE
CHECKED BY	
IN CHARGE	
APPROVED BY	
DATE	

GERALD Y. SEK
LICENSED PROFESSIONAL ENGINEER
No. 5635-C
HAWAII, U.S.A.

RUI PANG CHEN
LICENSED PROFESSIONAL ENGINEER
No. 3865-S
HAWAII, U.S.A.

STATE OF HAWAII
DEPARTMENT OF TRANSPORTATION
HIGHWAYS DIVISION

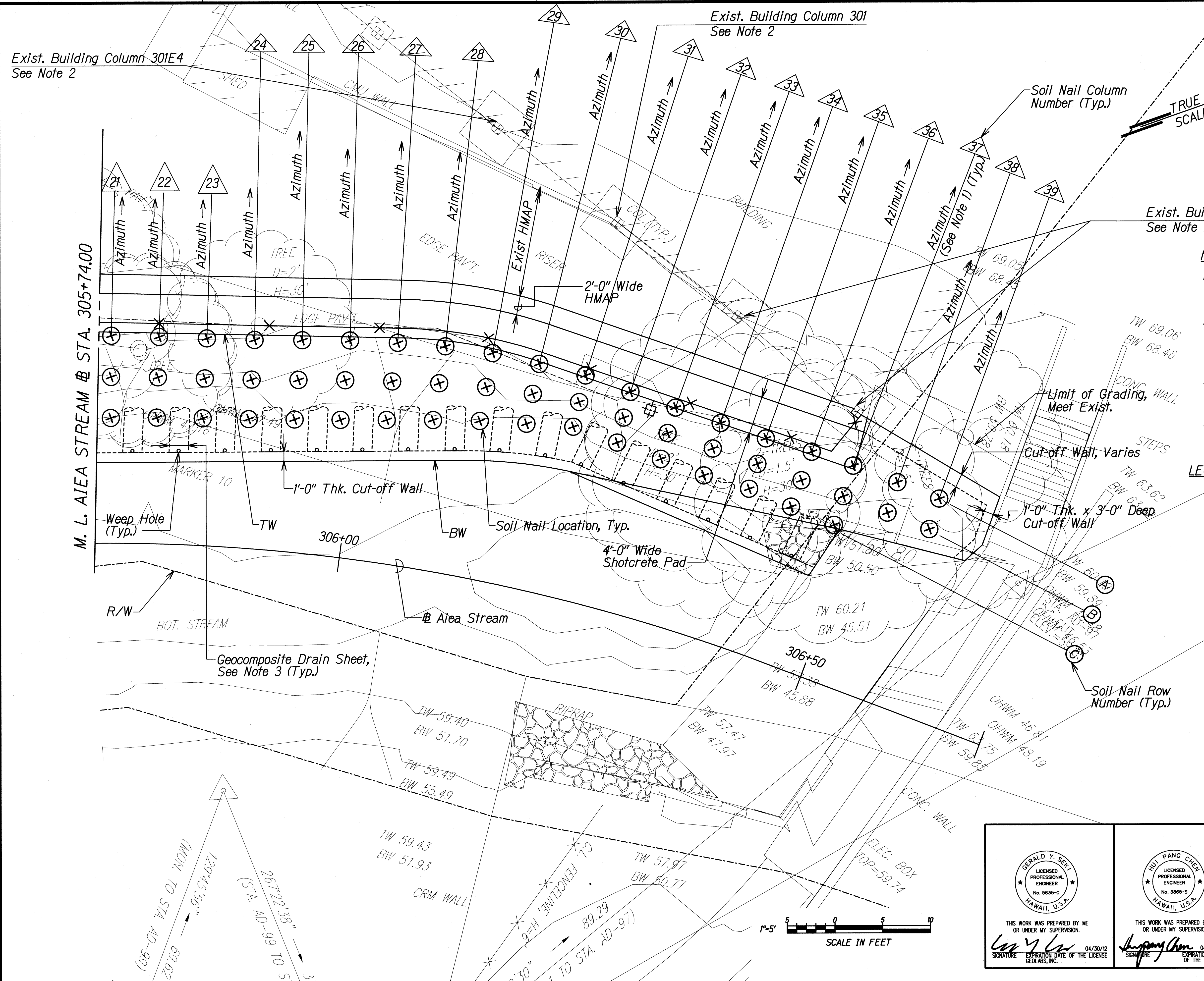
SOIL NAIL PLAN

INTERSTATE ROUTE H-1
AIEA STREAM EROSION CONTROL
Project No. HIE-01-11M

Scale: 1"=5' Date: September 2011

SHEET No. SN-1 OF 3 SHEETS

FED. ROAD DIST. NO.	STATE	PROJ. NO.	FISCAL YEAR	SHEET NO.	TOTAL SHEETS
HAWAII	HAW.	H1E-01-11M	2012	15	49



Exist. Building Column 301
See Note 2

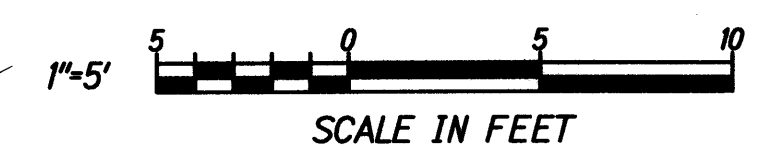
Soil Nail Column Number (Typ.)
TRUE NORTH
SCALE: 1"=5'

- NOTES:**
- For azimuth of Drilling direction of Soil Nail, See Sht. No. SN-3.
 - See Note 7 on Sht. SN-1 and Note 12 of Shotcrete Wall General Notes on Sht. No. CN-1.
 - For Details of Geocomposite Drain placement, See Sht. No. SW-1.
 - Pre-Production Soil Nail Length at Sta. 306+30 = 35'

- LEGEND:**
- (X) Soil Nail Location
 - (A) Soil Nail Row Number
 - BOF Bottom of Footing
 - 20 Soil Nail Column Number
 - ⊕ Pre-Production Soil Nail (See Sht. No. SW-7)
 - TW Top of Wall
 - BW Bottom of Wall
 - HMAP Hot Mix Asphalt Pavement
 - ✕✕ 6' Chain Link Fence

DATE	_____
SURVEY PLOTTED BY	_____
MADE BY	_____
DESIGNED BY	_____
QUANTITIES BY	_____
CHECKED BY	_____
NO.	_____

A:\SSWIP\Aiea Stream Erosion Control\Detail Sheets\SN-2.dwg



GERALD Y. SEK
 LICENSED PROFESSIONAL ENGINEER
 No. 5635-C
 HAWAII, U.S.A.
 THIS WORK WAS PREPARED BY ME OR UNDER MY SUPERVISION.
 SIGNATURE: *Gerald Y. Sek* DATE: 04/30/12
 EXPIRATION DATE OF THE LICENSE: GEOLABS, INC.

HUI PANG CHEN
 LICENSED PROFESSIONAL ENGINEER
 No. 3865-S
 HAWAII, U.S.A.
 THIS WORK WAS PREPARED BY ME OR UNDER MY SUPERVISION.
 SIGNATURE: *Hui Pang Chen* DATE: 04/30/12
 EXPIRATION DATE OF THE LICENSE:

STATE OF HAWAII
 DEPARTMENT OF TRANSPORTATION
 HIGHWAYS DIVISION

SOIL NAIL PLAN

 INTERSTATE ROUTE H-1
 AIEA STREAM EROSION CONTROL
 Project No. H1E-01-11M
 Scale: 1"=5' Date: September 2011
 SHEET No. SN-2 OF 3 SHEETS