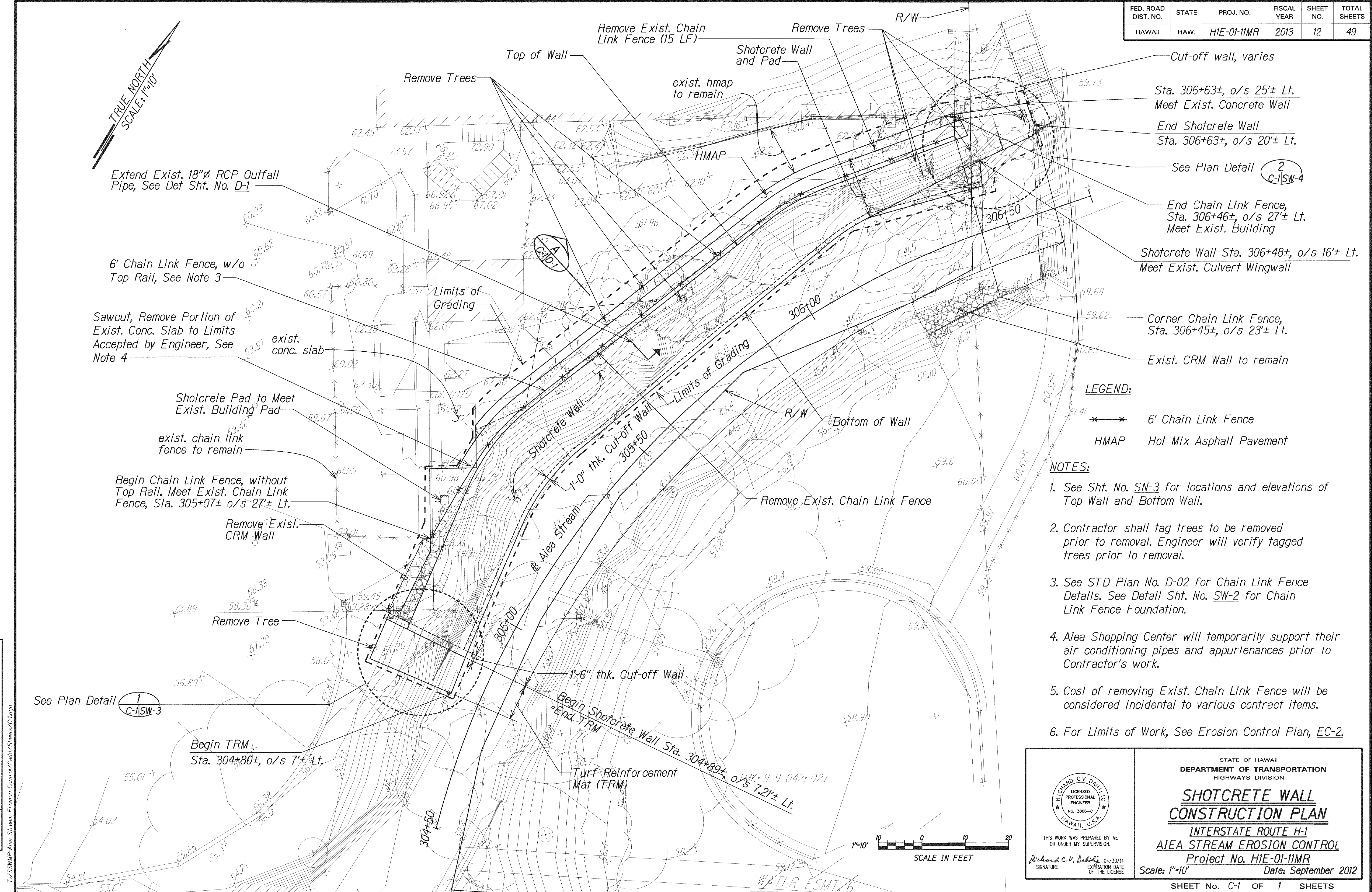


FED. ROAD DIST. NO.	STATE	PROJ. NO.	FISCAL YEAR	SHEET NO.	TOTAL SHEETS
HAWAII	HAW.	HIE-01-11MR	2013	12	49



LEGEND:

- 6' Chain Link Fence
- HPAP Hot Mix Asphalt Pavement

NOTES:

- See Sht. No. SN-3 for locations and elevations of Top Wall and Bottom Wall.
- Contractor shall tag trees to be removed prior to removal. Engineer will verify tagged trees prior to removal.
- See STD Plan No. D-02 for Chain Link Fence Details. See Detail Sht. No. SW-2 for Chain Link Fence Foundation.
- Aiea Shopping Center will temporarily support their air conditioning pipes and appurtenances prior to Contractor's work.
- Cost of removing Exist. Chain Link Fence will be considered incidental to various contract items.
- For Limits of Work, See Erosion Control Plan, EC-2.

THIS WORK WAS PREPARED BY ME OR UNDER MY SUPERVISION.

Richard C.V. Dahlig
SIGNATURE

04/30/14
EXPIRATION DATE OF THE LICENSE

STATE OF HAWAII
DEPARTMENT OF TRANSPORTATION
HIGHWAYS DIVISION

**SHOTCRETE WALL
CONSTRUCTION PLAN**

INTERSTATE ROUTE H-1
AIEA STREAM EROSION CONTROL

Project No. HIE-01-11MR

Scale: 1"=10' Date: September 2012

SHEET No. C-1 OF 1 SHEETS

DATE	_____
SURVEY PLOTTED BY	_____
DESIGNED BY	_____
TRACED BY	_____
NOTE BOOK	_____
QUANTITIES BY	_____
CHECKED BY	_____
No.	_____

T:\SSWMP-Aiea Stream Erosion Control\Drawings\Sheets\C-1.dgn