

**STATE OF HAWAII
DEPARTMENT OF TRANSPORTATION
HIGHWAYS DIVISION**

ADDENDUM NO. 1

FOR

**INTERSTATE ROUTE H-1
EXTENSION AND REPAIR OF
SCHOOL STREET ON-RAMP RETAINING WALL
PROJECT NO. H1I-01-08**

AND

**INTERSTATE ROUTE H-1
DRAINAGE IMPROVEMENTS
VICINITY OF SCHOOL STREET OFF-RAMP
PROJECT NO. H1I-01-09**

**DISTRICT OF HONOLULU
ISLAND OF OAHU**

FY 2009

Amend the bid documents as follows:

A. SPECIAL PROVISIONS

1. Delete Section 697 – Project Web Page.
2. Replace pages 645-1a to 645-19a, dated 3/18/09 with the attached pages 645-1a to 645-19a, dated 4/06/09.

B. PLANS

1. Replace Plan Sheet Nos. 9 to 15, 17, 21, 22, 25, 27 to 30, 34 to 36 and 38 to 40 with attached Plan Sheet Nos. ADD. 9 to ADD. 15, ADD. 17, ADD. 21, ADD. 22, ADD. 25, ADD. 27 to ADD. 30, ADD. 34 to ADD. 36 and ADD. 38 to ADD. 40.

C. PRE-BID MEETING

The minutes and attendance sheet for the April 6, 2009 Pre-bid meeting are attached for your information.

H1I-01-08

H1I-01-09

Please acknowledge receipt of this Addendum No. 1 by recording the date of its receipt in the space provided on Page P-4 of the Proposal.


BRENNON T. MORIOKA, Ph.D, P.E.
 Director of Transportation

H1I-01-08

H1I-01-09

Amend **Section 645 – Traffic Control Devices** to read as follows:

"SECTION 645 - WORK ZONE TRAFFIC CONTROL

645.01 Description. This section describes the following:

(A) Furnishing, installing, maintaining and subsequently removing work zone traffic control devices, and personnel. Work zone traffic control shall include providing flaggers and police officers.

(B) Keeping roads for public traffic open and in passable condition; providing and maintaining temporary access crossings for trails, businesses, parking lots, garages, residences, farms, parks, and other driveways; taking necessary work precautions for the protection, safety, and convenience of the public; should pedestrian facilities exist, taking necessary measures for safe and accessible passage, with route information and ADAAG compliance, for pedestrians traveling through or near work zone.

(C) Taking safety and precautionary measures, such as illuminating roadway obstructions during hours of darkness, in accordance with Chapter 286, HRS; Title 19, Subtitle 5, Chapters 127, 128, and 129, HAR; and *MUTCD*.

645.02 Materials.

Signs	750.01
Sign Posts	750.02
Fasteners for Signs and Route Markers	750.03
Reflector Marker	750.07
Traffic Delineators	750.09
Preformed Pavement Marking Tape	755.04

Submit 10 sets of FHWA approval letters certifying compliance with NCHRP Report 350 for signs, sign supports, barricades, delineators, cones, vertical panels, and other traffic control devices. Use of signs, sign supports, barricades, delineators, cones, vertical panels, and other traffic control devices that are not certified to be NCHRP Report 350 compliant will not be allowed.

Upon request of the Engineer, furnish self-certified NCHRP Report 350 compliant letter from vendor for each type of Category 1 traffic control device, as defined in NCHRP Report 350, including single-piece traffic cone, single-piece drum,

tubular marker, and delineator.

Traffic control devices, including signs, barricades, warning lights, arrow boards, changeable message signs, cones, delineators, and markers, shall conform to the American Traffic Safety Services Association (ATSSA), *Quality Standards for Work Zone Traffic Control Devices* and *MUTCD*.

Protective devices including barricades, warning signs, lights, and temporary signals shall conform to Title 19, Subtitle 5, Chapters 127, 128, and 129, HAR. Reflectorization for protective devices such as barricades, delineators, and warning signs shall conform to Subsection 750.01 – Signs.

645.03 Construction. Furnish, install, and maintain barricades, signs, cones, delineators, lights, flashing signals, and other traffic control devices

Furnish two uniformed police officers with vehicles equipped with blue strobe lights for each location that requires work zone traffic control.

Furnish, install, maintain, and remove two changeable message boards (i.e., electronic message signs) for each location that requires work zone traffic control as shown in detour plan/TCP or requested by the Engineer.

When directing traffic, flaggers, police officers or both shall be in direct communication with each other.

Submit TCP and schedule at least 15 working days before work starts. Submit modifications and deviations from accepted TCP and schedule at least 15 working days before start of work requiring modification or deviation. Illegible TCP will not be accepted.

Include the following in TCP and schedule:

- (1) Signs (type, size, designation, and placement).
- (2) Traffic movements shown by arrows.
- (3) Positions of flaggers and police officers.
- (4) Barricades, cones, delineators, and additional traffic control devices and measures necessary for protection of work and public safety; and placement, spacing, distances, and reference points for traffic control devices.
- (5) Layout, drawn to scale, of traffic control devices, including information needed to layout TCP.
- (6) Brief description of work.

94 (7) Dates of work.

95
96 (8) Times of day affected.

97
98 (9) Proposed public information sign.

99
100 (10) Proposed news release.

101
102 Place sign or device situated farthest upstream from work zone first. Then place
103 others progressively downstream toward work zone.

104
105 Extend cones or delineators to point where cones or delineators are visible to
106 approaching traffic.

107
108 For signs with messages on both faces, cover inapplicable message before
109 placement.

110
111 Keep barricades, construction and warning signs, and other traffic control
112 devices in good condition. Repair, clean, or replace barricades, signs, or other devices
113 as required to maintain effectiveness and appearance. The Engineer alone will decide
114 suitable condition of each barricade, sign, or other traffic control device.

115
116 Remove or cover regulatory and warning signs that conflict with TCP. Restore
117 signs upon completion of work or as ordered by the Engineer. Affix object markers to
118 post(s) of covered sign.

119
120 Promptly remove or cover construction and warning signs that are not applicable
121 or not in use.

122
123 Promptly remove traffic control devices that are no longer needed.

124
125 Remove traffic control devices in reverse order of installation, starting closest to
126 work zone and continuing away from work zone.

127
128 Maintain abutting owners' existing access until replacement access is usable.
129 Obtain permission from abutting owners, including conditions for closing existing
130 access. Submit copy of agreement with abutting owners before beginning work in the
131 affected area.

132
133 When working on existing facility that will be kept open to traffic, provide smooth
134 and even surface for public traffic use. Only work on a portion of roadway at one time,
135 and stage construction from one side to other while routing traffic over opposite side.

136
137 During subgrade and paving operations, paved shoulders may be used for public
138 traffic.

Do not store material or equipment where it will interfere with public traffic. Remove equipment and other obstructions out of right-of-way or clear zone to permit free and safe passage of public traffic during non-working hours or suspension of work. For storage of materials and equipment, see Subsection 105.23 – Storage and Handling of Materials and Equipment.

Notify Fire Department, in writing, at least 24 hours before blocking or closing road access. Keep fire hydrants accessible to Fire Department by not placing material or other obstructions within five feet of fire hydrant or closer than permitted by applicable ordinances, rules, and regulations.

Notify the Engineer and County, including Bus Systems Division, Police Department, Fire Department, Emergency Medical Services, and Department of Health in writing at least five days before start of construction.

(A) Signs. Install signs sufficiently ahead of location where operations may interfere with use of road by traffic and at intermediate points where new work crosses or coincides with existing road.

Place signs in accordance with TCP as accepted by the Engineer

(B) Construction Signs. Erect construction signs at the beginning of project and at the end of project at the location indicated by the Engineer. These signs shall remain for the duration of the highway project. Maintain these signs. Place these signs besides the required traffic control signs called for herein.

The construction signs shall be new and become the property of the Contractor.

(C) Barricades

(1) General. Provide, erect, and maintain necessary barricades suitable for protection of work and safety of the public.

Barricades shall be in good condition. Barricade application and installation shall be in accordance with accepted TCP.

Provide sand bags if required or ordered by the Engineer. Sand bags and installation method shall comply with *MUTCD* and be accepted by the Engineer prior to use. Do not place sand bags on striped barricade rail.

During hours of darkness, install steady burn or flashing lamps on barricades selected by the Engineer. Attach lamps on barricade ends closest to traveled way and visible to oncoming traffic.

Do not install signs on barricades unless signs and barricades have been crash tested as a unit and accepted under NCHRP Report 350.

(2) Retroreflectorization. Retroreflectorize barricade rails and attachment with retroreflective sheeting in accordance with Subsection 750.01(C)(4) – Type III or IV Retroreflective Sheeting (High Intensity) or Subsection 750.01(C)(5) - Hardened Aluminum-Backed Retroreflective Sheeting.

Retroreflectorize both vertical faces of each barricade rail.

(3) Color. Provide white colored rails, frames, and braces with front and back rail faces having 6-inch-wide alternating orange or red and white stripes sloping downward toward traveled way at angle of 45 degrees from vertical. Use stripe colors in accordance with the following:

(a) Use orange and white stripes for the following conditions:

1. Construction work.
2. Detours.
3. Maintenance work.

(b) Use red and white stripes for the following conditions:

1. On roadways with no outlet, such as dead-ends and cul-de-sacs.
2. Ramps or lanes closed for operational purposes.
3. Permanent or semi-permanent closure or termination of roadway.

(4) Maintenance. Keep barricades in good condition. Repair, repaint, clean, or replace barricades to maintain effectiveness and appearance. Immediately replace missing or damaged barricades, lamps, sandbags, and other accepted weights.

Clean and repair barricades before relocating to other locations.

(D) Traffic Delineators. Install traffic delineators in accordance with accepted TCP.

Maintain traffic delineators in good condition. Immediately replace

missing or damaged traffic delineators.

Clean delineator prior to relocating to new location.

(E) Cones. Install traffic cones in accordance with accepted TCP.

Maintain traffic cones. Keep traffic cones clean and in good repair.
Immediately replace lost, stolen, or damaged traffic cones.

Clean cones prior to relocating to new location.

(F) Lane Closures.

The Engineer will allow the contractor to do lane closures only as follows:

H-1 West-Bound Lanes

(For all Drainage Improvements and Retaining Wall Repair Work)

1-Lane Closure

Sunday 9:30 P.M. – Midnight

Monday thru Thursday Midnight – 5:00 A.M.
9:30 P.M. – Midnight

Friday (Morning) Midnight – 5:00 A.M.

2-Lane Closure

Sunday 11:30 P.M. – Midnight

Monday thru Thursday Midnight – 5:00 A.M.
11:30 P.M. – Midnight

Friday (Morning) Midnight – 5:00 A.M.

H-1 West-Bound School Street Off-Ramp

(For Drainage Improvements Work)

24-Hour Ramp Closure

Close off-ramp to traffic on a Sunday night after 9:30 P.M., and
re-open off-ramp to traffic on the third Monday thereafter before
5:00 A.M.

24-hour off-ramp closure is allowed for maximum 14 Calendar Days.
There shall be no exceptions or extensions for the ramp closure days.

H-1 West-Bound School Street On-Ramp

(For Retaining Wall Anchor Drilling Work from Ramp Sta. 3+50± to Ramp Sta. 7+80±)

24-Hour Ramp Closure

Close on-ramp to traffic on a Sunday night after 9:30 P.M., and re-open on-ramp to traffic on the fifth Wednesday thereafter before 5:00 A.M.

From Ramp Sta. 3+50± to Ramp Sta. 7+80±, the daily allowable retaining wall anchor drilling hours are restricted by DOH Noise Variance. See Special Provision Sec. 107.03 for details.

24-hour on-ramp closure is allowed for maximum 30 Calendar Days. There shall be no exceptions or extensions for the ramp closure days.

H-1 West-Bound School Street On-Ramp

(For all Retaining Wall Repair Work)

Daily Ramp Closure

Saturday	7:00 A.M. – 6:00 P.M.
Sunday	7:00 A.M. – Midnight
Monday thru Thursday	Midnight – 2:00 P.M. 7:00 P.M. – Midnight
Friday (Morning)	Midnight – 2:00 P.M.

The daily allowable retaining wall anchor drilling hours are restricted by DOH Noise Variance. See Special Provision Sec. 107.03 for details.

School Street (Aala Street to Liliha Street)

1-Lane Closure

Saturday	7:00 A.M. – 6:00 P.M.
Sunday	7:00 A.M. – Midnight
Monday thru Thursday	Midnight – 5:00 A.M. 9:00 A.M. – 2:00 P.M. 7:00 P.M. – Midnight
Friday (Morning)	Midnight – 5:00 A.M.

No lane closure shall be allowed on School Street after May 1, 2010, due to a City sewer line project scheduled for the area.

It is anticipated that lane-shift on H-1 West-bound would be needed for the School Street Off-Ramp drainage improvements work due to the proximity of work area to the existing travel lane on H-1. However, lane-shift on H-1 for the School Street On-Ramp retaining wall repair work would be optional depending on Contractor's operations and work space requirements.

Should the Contractor want to implement the optional H-1 lane-shift for the retaining wall repair work, the lane-shift for the drainage improvements work shall be removed and normal traffic pattern on H-1 West-bound restored, before lane-shift for the retaining wall repair work would be allowed. Only one lane-shift on H-1 West-bound shall be allowed at all times.

Exceptions to lane closure hours specified require written acceptance by the Engineer. No increase in contract price or contract time will be given for lane closure restrictions specified.

For island of Oahu, no lane closures will be allowed during 24-hour periods as follows:

- (1) Day preceding holiday (3:00 p.m. to Midnight), except as otherwise specified.
- (2) Holidays (Midnight to Midnight).
- (3) Day before and day after Thanksgiving Day (Midnight to Midnight).
- (4) Three-week holiday period for Christmas and New Years (Midnight to Midnight).
- (5) Three-week "Beat-the-School-Jam" period, to be determined, (Midnight to Midnight) beginning approximately third week of August.
- (6) Other dates of events indicated in the contract documents.

No time extension will be given for the above restrictions. The contract time for the project has accounted for any loss of time due to the above restrictions.

Keep lanes open to traffic and allow flow at normal posted speed limit during non-lane-closure hours.

If applicable, coordinate lane closures with adjacent project(s) at no increase in contract price or contract time.

Rental fees will be assessed in accordance with Subsection 108.10 – Rental Fees for Unauthorized Lane Closure or Occupancy, for failure to open

lanes to traffic during peak hours. Morning and afternoon peak hours shall be from 5:30 a.m. to 8:30 a.m. and 3:00 p.m. to 6:00 p.m., respectively, Monday through Friday.

Before scheduling work, submit requests for detours and lane closures as follows:

- (1) Detours - 8 weeks before implementing detours.
- (2) Lane closures - 6 weeks before implementing lane closures.

Include the following with detour and lane closure requests:

- (1) Explanation of proposed changes to existing traffic pattern.
- (2) Installation schedule for informational and traffic control signs.
- (3) Publication schedule for legal notices.
- (4) Plan showing proposed informational signs.
- (5) Plan showing lane changes or detours in accordance with accepted TCP, including details at beginning of multi-lane highway lane changes and detours.

Detours or lane closures will not be allowed before the Engineer accepts detour or lane closure request.

TABLE 645-I - FOR TRAFFIC CONTROL PLAN

POSTED SPEED LIMIT (M.P.H.)	SIGN SPACING (D) (FEET)	TAPER LENGTH (T) (FEET)		LONGI- TUDINAL BUFFER SPACE (B) (FEET)	SPACING OF CONES OR DELINEATORS (FEET)		
		W = 12' OR LESS *	W = GREATER THAN 12' *		TAPER	TANGEN T	WORK AREA
20	250	200	W x 17	35	20	20	10
25	250	200	W x 17	55	25	25	10
30	250	250	W x 20	85	30	30	10
35	250	250	W x 20	120	35	35	10
40	500	350	W x 30	170	40	40	10
45	500	550	W x 45	220	45	45	10
50	1000	600	W x 50	280	50	50	10
55	1000	700	W x 55	335	55	55	10

* W = width of lane or shoulder

(G) Advisory Signs. Submit advisory sign shop drawings. Construct, install, maintain, and remove six (6) advisory signs as ordered by the Engineer. Place signs at locations designated by the Engineer. Provide signs, minimum 8 feet wide by 4 feet high, with black letters on orange background, and with three 4.00 pounds/foot flanged channel posts for each sign.

Include starting date and hours of construction in sign message. Use letter heights of 8 inches, Series D. The Engineer will review and accept advisory signs' wording before fabrication. Install advisory signs two weeks before start of construction. Remove advisory signs immediately after construction has been completed or as ordered by the Engineer.

(H) Advertisement. Place advertisement in newspaper, as ordered by Engineer, for the following traffic pattern changes or night work:

- (1) Detours.
- (2) Lane closure.
- (3) Permanent road closure.
- (4) Permanent new route that changes previous route.

Include the following information:

- (1) Map of traffic pattern change limits.
- (2) Map showing lane(s) closure and detour pattern.
- (3) Notice of starting and ending dates and duration.
- (4) Explanation of lane(s) closure or detours in "Notice To Motorist".

Quality of map shall conform to the following requirements:

- (1) No freehand printing or penciling.
- (2) Highlight important features by darkening, cross-hatching, crossing-out, or coloring important words, as necessary.
- (3) Provide maps with minimum size of five columns wide and four columns deep. Lesser width columns may be considered to balance against size of drawing.
- (4) Text specifications.

- (a) Work being featured - 3/16-inch text.
- (b) Major roads and features - 1/8-inch text.
- (c) Other roads and features- first letter of sentence upper case.
- (d) "NOTICE TO MOTORIST" in upper case.
- (e) Message - first letter of sentence upper case.

(5) Line Thickness.

- (a) Important feature being advertised - line thicker than rest of map.
- (b) Directional arrow - bolder than rest of lines shown on map, when important, to show route traffic should use.

(6) Show reference direction such as "TO HONOLULU" with arrow.

Submit the following:

- (1) "Notice to Motorists" before placement in newspaper, six weeks before start of work.
- (2) Actual size of notice to be published in newspaper. The Engineer will not allow size reduction of notices once accepted. Submit final, camera-ready "Notice to Motorists" advertisement.

Place advertisement for three consecutive days and within one week before traffic pattern changes, in publication as ordered by the Engineer.

645.04 Measurement.

- (A) Traffic control as specified in Subsection 645.03 - Construction will be measured on a contract lump sum basis. Measurement for payment will not apply.
- (B) The two police officers for each location that requires work zone traffic control shall not be paid for separately, and shall be considered incidental to the contract item No. 645.0101, Traffic Control.
- (C) The two changeable message boards (i.e., electronic message signs) for each location that requires work zone traffic control as shown in detour plan/TCP or requested by the Engineer shall not be paid for separately, and shall be

considered incidental to the contract item No. 645.0100 and 645.0101, Traffic Control.

(D) The Engineer will measure additional police officers, additional traffic control devices, and advertisement, if ordered by the Engineer, on a force account basis, in accordance with Subsection 109.06 - Force Account Provisions and Compensation.

645.05 Payment. The Engineer will pay for the accepted traffic control, additional police officers, additional traffic control devices, and advertisement at the contract price per pay unit, as shown in the proposal schedule. Payment will be full compensation for the work prescribed in this section and the contract documents.

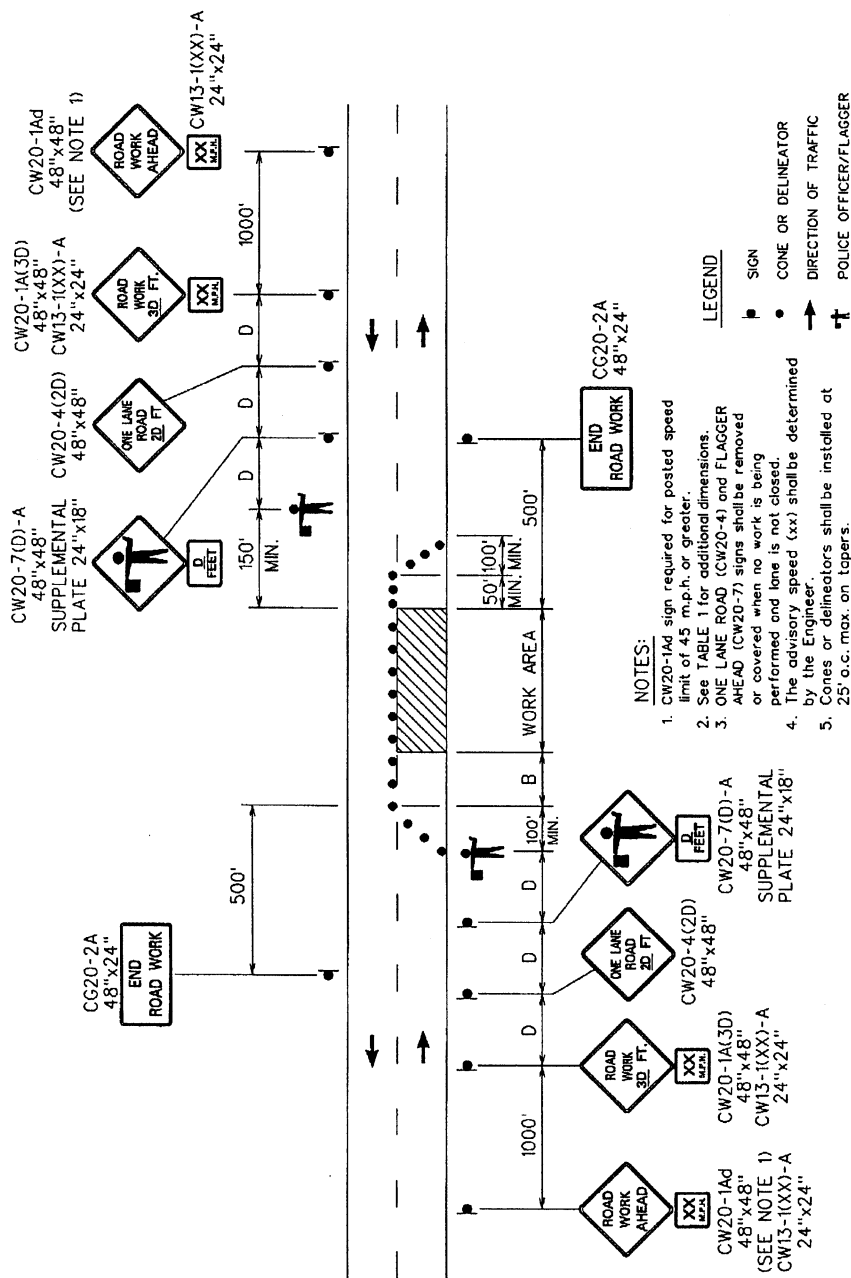
The Engineer will pay for the following pay items when included in the proposal schedule:

Pay Item	Pay Unit
Traffic Control	Lump Sum
Additional Police Officers, Additional Traffic Control Devices, And Advertisement	Force Account

An estimated amount for the force account may be allocated in the proposal schedule under "Additional Police Officers, Additional Traffic Control Devices and Advertisement", but the actual amount to be paid will be the sum shown on the accepted force account records, whether this sum is more or less than the estimated amount allocated in the proposal schedule.

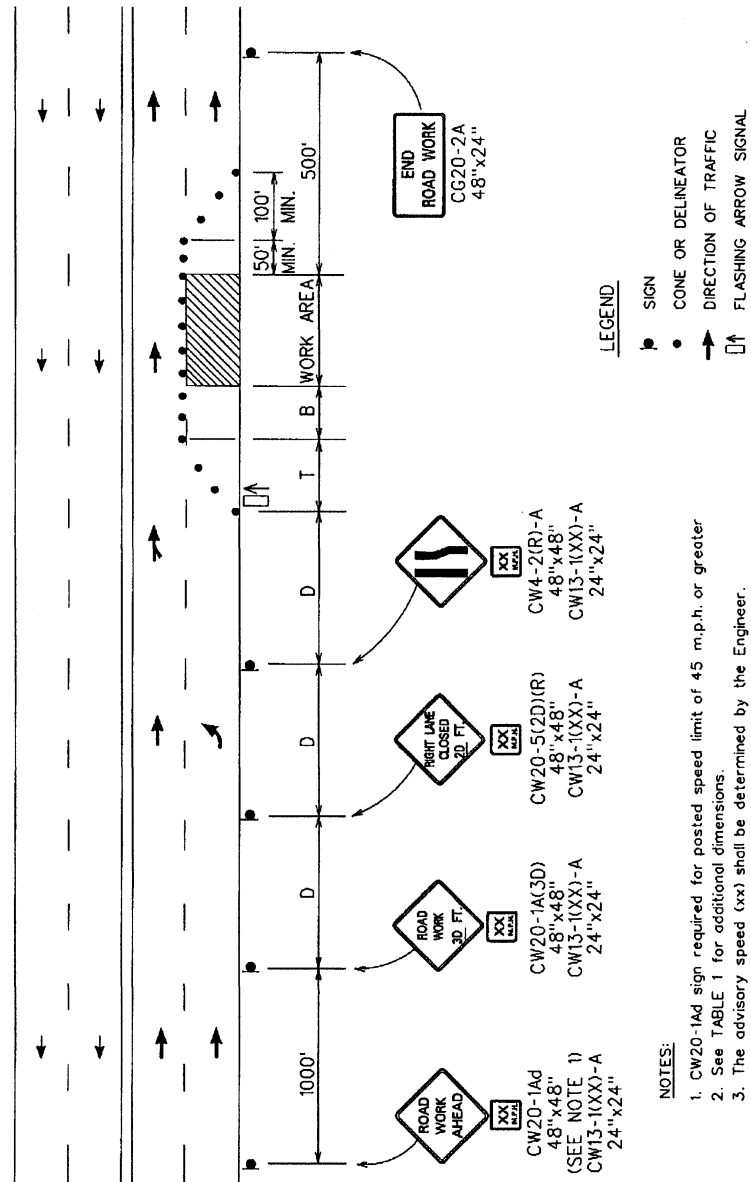
The Engineer will not pay for request submittals. The Engineer will not consider claims for additional compensation of late submittals or requests by Contractor.

537
538
539



TWO-LANE HIGHWAY - ONE LANE CLOSED
FIGURE 1 - TRAFFIC CONTROL PLAN

R11/97



MULTILANE UNDIVIDED HIGHWAY - RIGHT LANE CLOSED

FIGURE 2 - TRAFFIC CONTROL PLAN

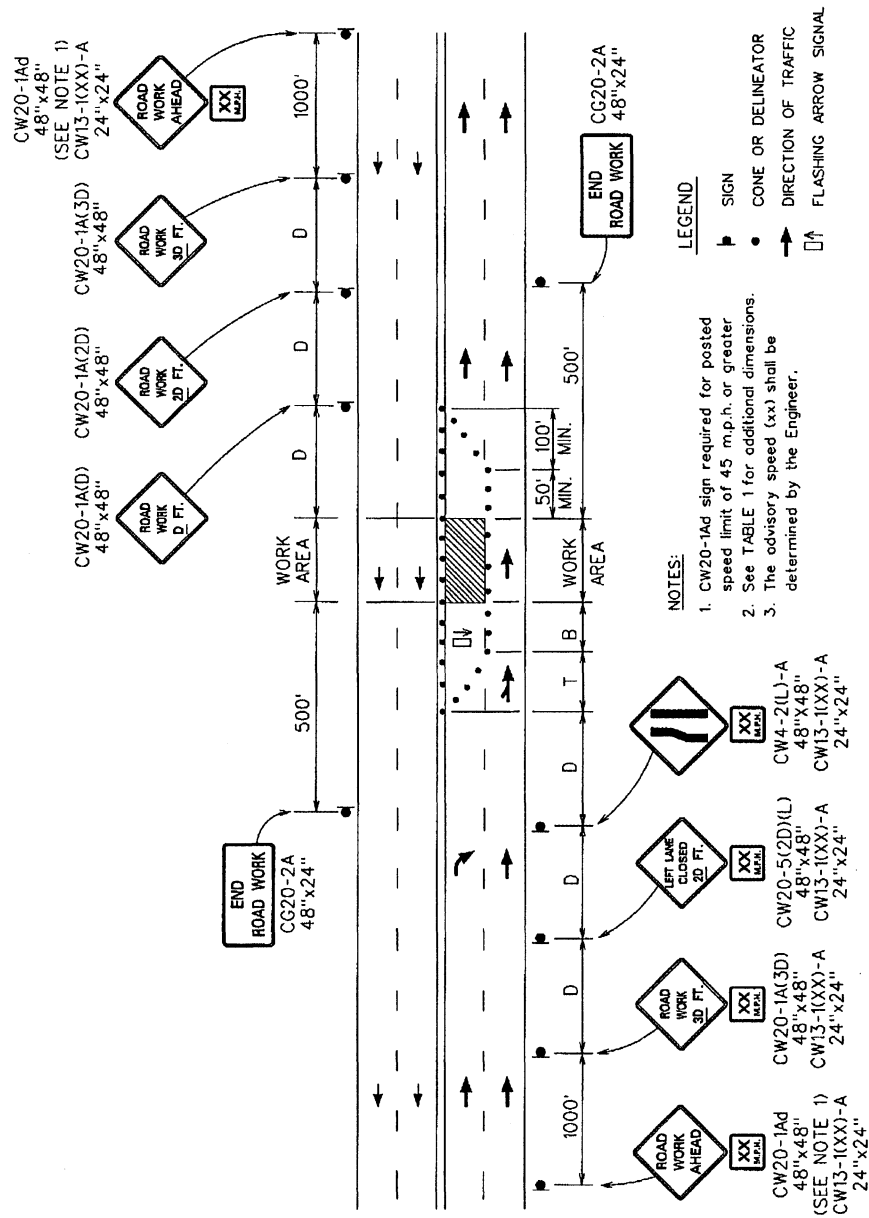
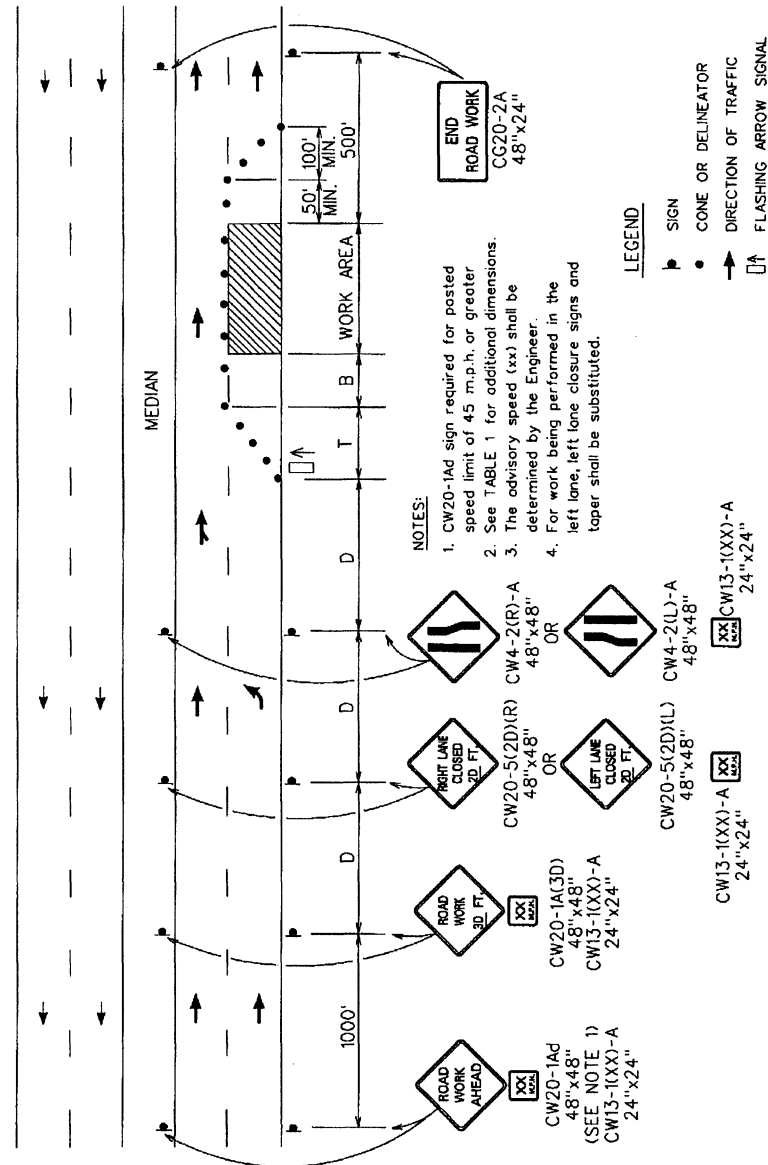
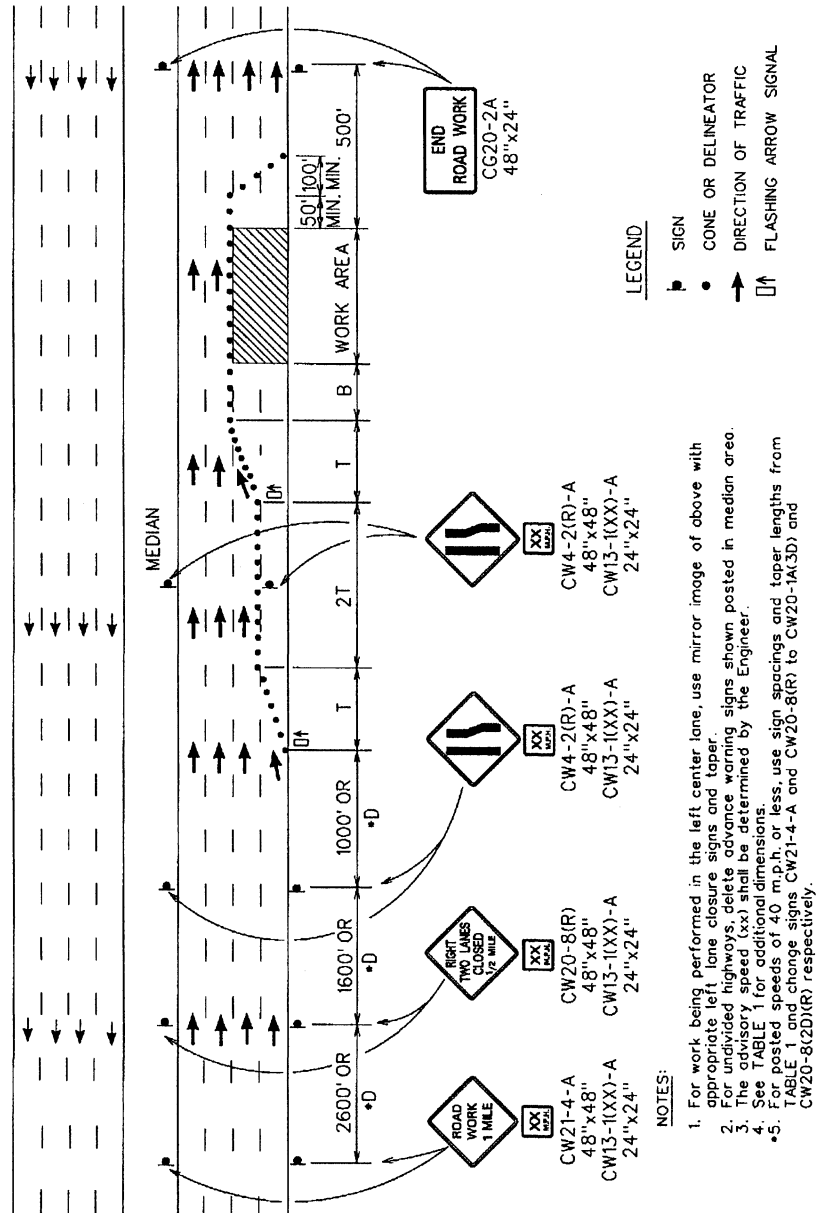


FIGURE 3 - TRAFFIC CONTROL PLAN



MULTILANE DIVIDED HIGHWAY - ONE LANE CLOSED

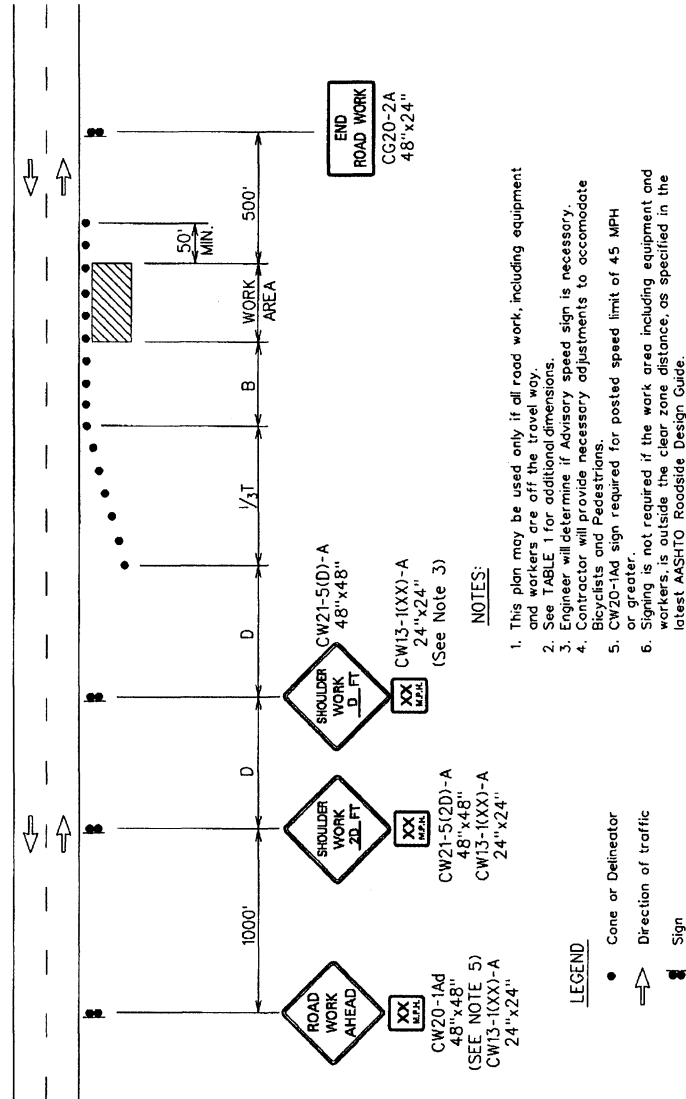
FIGURE 5 - TRAFFIC CONTROL PLAN



MULTILANE HIGHWAY - MULTIPLE LANE CLOSED

FIGURE 6 - TRAFFIC CONTROL PLAN

555
556



R10/96

WORKING ON SHOULDER OR ROADSIDE
FIGURE 7 - TRAFFIC CONTROL PLAN

557
558

END OF SECTION 645

H1I-01-08
H1I-01-09
645-19a

Addendum No. 1
r4/06/09

April 6, 2009 PRE-BID MEETING MINUTES

Subject: Interstate Route H-1, Extension and Repair of
School Street On-Ramp Retaining Wall,
Project No. H1I-01-08 and Interstate Route H-1
Drainage Improvements, Vicinity of School Street Off-Ramp
Project No. H1I-01-09

Attendees: See attached lists of attendees

- A. The meeting was called to order by Kwok Ng (DOT Project Engineer) at about 9:00 a.m. to brief the prospective bidders for the subject project.
- B. Questions from Global Specialty.
 - 1. Does the project use Federal stimulus money?
Response: No.
 - 2. Is there overtime inspection?
Response: Overtime inspection is not being implemented per HWY-O.
- C. HWY-DD mentioned that the State DOT will be issuing an addendum.
- D. Meeting was adjourned at about 9:30 a.m.

HIGHWAYS DIVISION
PRE-BID MEETING ATTENDANCE

SUBJECT: INTERSTATE ROUTE H-1 EXTENSION AND REPAIR OF
SCHOOL STREET ON-RAMP RETAINING WALL
AND
INTERSTATE ROUTE H-1 DRAINAGE IMPROVEMENTS
VICINITY OF SCHOOL STREET OFF-RAMP

PROJ. NO.: H1I-01-08 & H1I-01-09

DATE, TIME & PLACE: April 6, 2009; 9:00 A.M.; HWY-DD Conference Room

NAME	OFFICE	TELEPHONE
GARRETT SULLIVAN	KAEKOR CONST.	841.3110
Tom Heinrich	Global Specialty	843 8881
Bess Tran	Delta Construction	682-1315
Jim Malone	"	"
NES NAKAMURA	OKADA TRUCKING CO. LTD	841-0138
Rod Clements	Kiewit Pacific Co	674-1088
James Fu	State D.O.T. Highways ^{Bridges}	692-7613
Julienne Franks	HDOT - TD	692-7681
Rafael Karammas	-DB	692-7662
JON NISHIHARA	-DH	692-7564
TIN LUNG CHAO	SDOT	483-2570
DOMINGO ORTIZ	SDOT - DB	692-7616
PETER CHAN	SDOT - TD	692-7680
Brent Maeda	SDOT - DCU	483-2562
Richard Helle	Haw'n Dredging	735-3248

SUBJECT: INTERSTATE ROUTE H-1 EXTENSION AND REPAIR OF
SCHOOL STREET ON-RAMP RETAINING WALL
AND
INTERSTATE ROUTE H-1 DRAINAGE IMPROVEMENTS
VICINITY OF SCHOOL STREET OFF-RAMP

DATE, TIME & PLACE: April 6, 2009; 9:00 A.M.; HWY-DD Conference Room

[illegible]