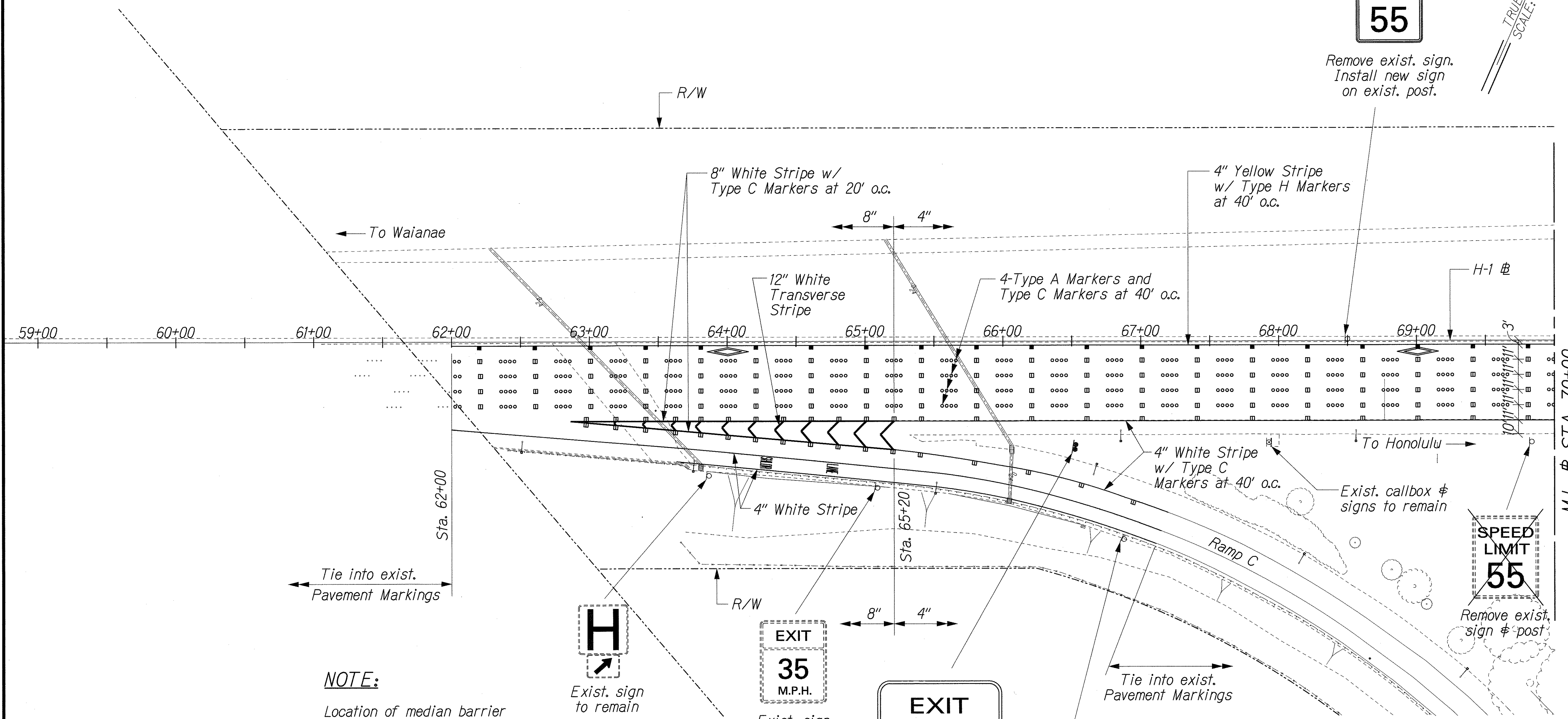
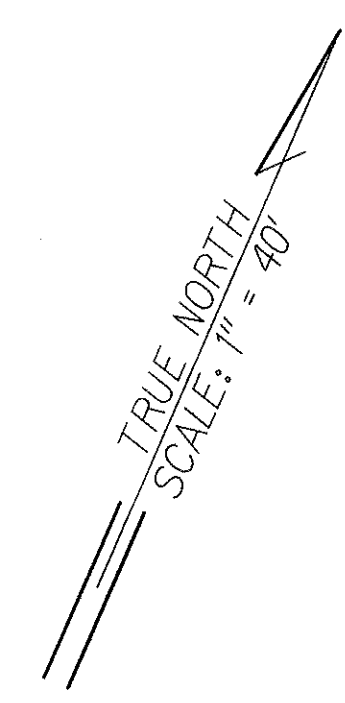


FED. ROAD DIST. NO.	STATE	FEDERAL AID PROJ. NO.	FISCAL YEAR	SHEET NO.	TOTAL SHEETS
HAWAII	HAW.	IM-H1-1(245)	2005	89	183

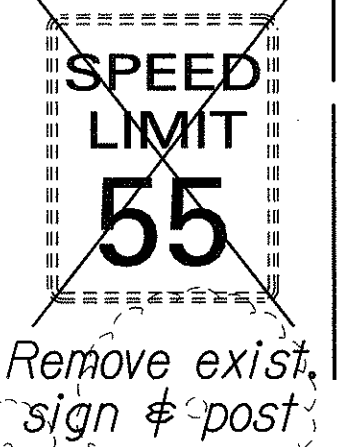
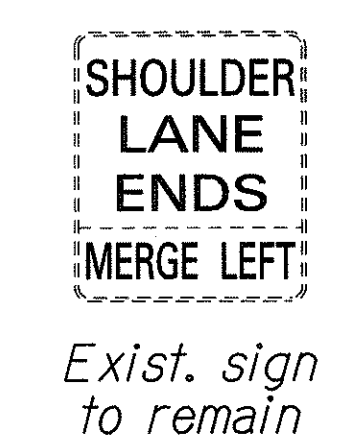
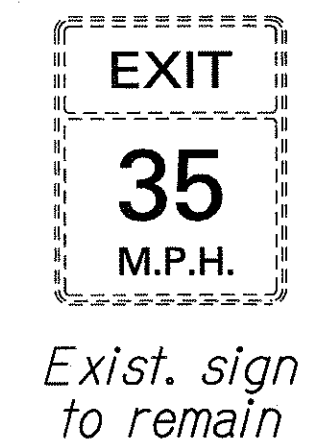
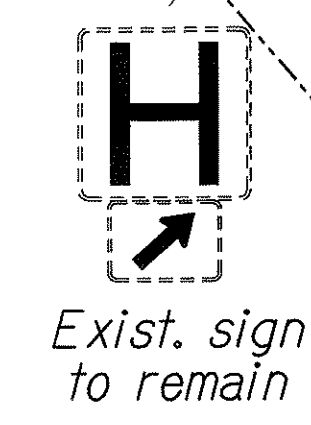
Sta. 68+50±
R2-1(55)-A
48" x 60"

SPEED LIMIT
55

Remove exist. sign.
Install new sign
on exist. post.



NOTE:
Location of median barrier mounted sign is approximate.



DATE	
SURVEY PLOTTED BY	
DRAWN BY	
TRACED BY	
DESIGNED BY	
CHECKED BY	
NO. _____	

14/00E H1 REHAB/SIGN/SS-01dgn

THIS WORK WAS PREPARED BY ME OR UNDER MY SUPERVISION.

R. M. Urasinski
1/24/06

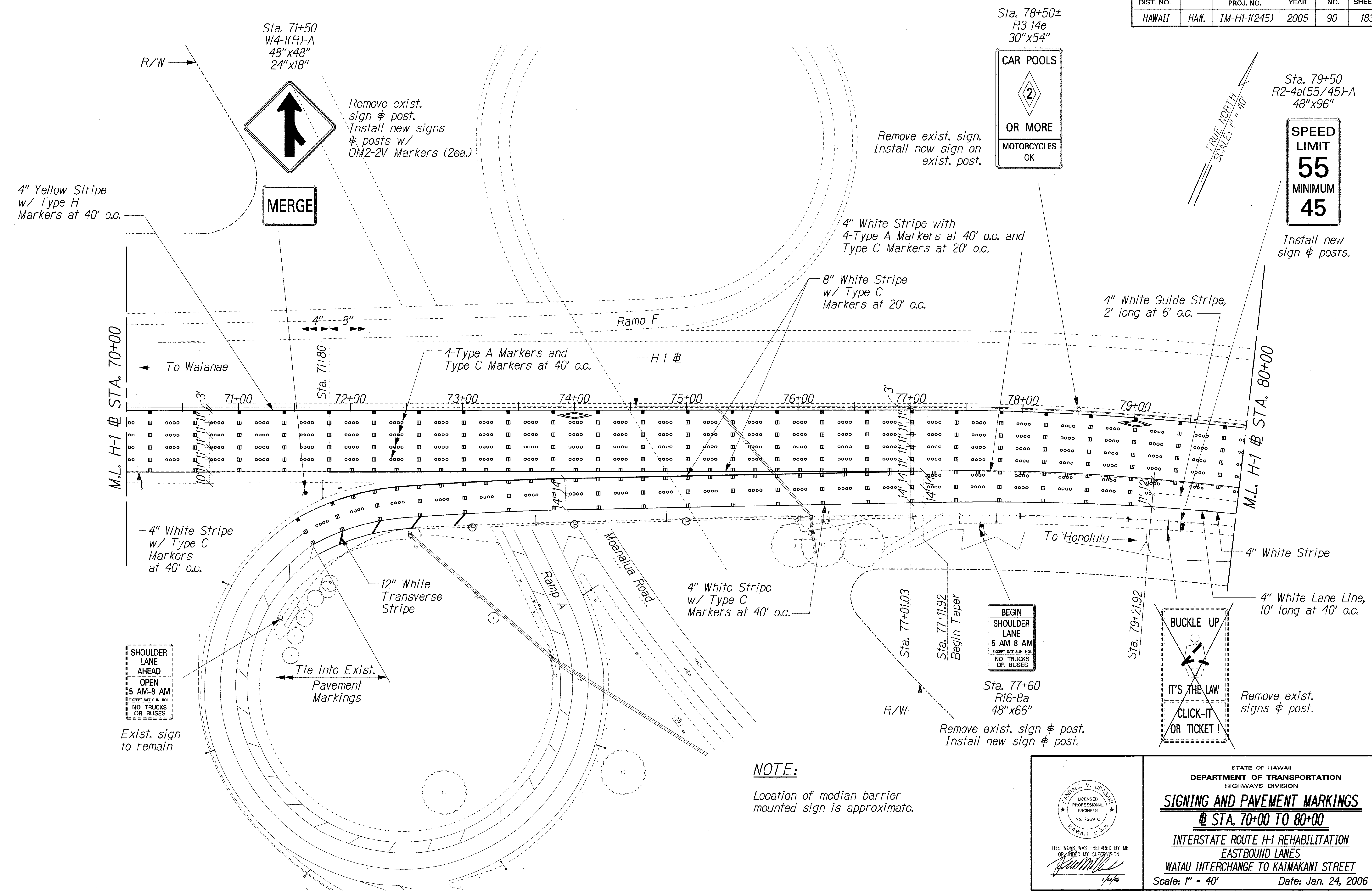
STATE OF HAWAII
DEPARTMENT OF TRANSPORTATION
HIGHWAYS DIVISION

SIGNING AND PAVEMENT MARKINGS
@ STA. 62+00 TO 70+00

INTERSTATE ROUTE H-1 REHABILITATION
EASTBOUND LANES
WAI'AU INTERCHANGE TO KAIMAKANI STREET

Scale: 1" = 40' Date: Jan. 24, 2006

FED. ROAD DIST. NO.	STATE	FEDERAL AID PROJ. NO.	FISCAL YEAR	SHEET NO.	TOTAL SHEETS
HAWAII	HAW.	IM-HI-1(245)	2005	90	183



4" Yellow Stripe w/ Type H Markers at 40' o.c.

Sta. 71+50
W4-1(R)-A
48"x48"
24"x18"

MERGE

Remove exist. sign & post.
Install new signs & posts w/ OM2-2V Markers (2ea.)

Sta. 78+50±
R3-14e
30"x54"

CAR POOLS
2
OR MORE
MOTORCYCLES OK

Remove exist. sign.
Install new sign on exist. post.

Sta. 79+50
R2-4a(55/45)-A
48"x96"

SPEED LIMIT
55
MINIMUM
45

Install new sign & posts.

TRUE NORTH
SCALE: 1" = 40'

M.L. H-1 @ STA. 70+00

M.L. H-1 @ STA. 80+00

To Waianae

To Honolulu

4" White Stripe w/ Type C Markers at 40' o.c.

12" White Transverse Stripe

4" White Stripe w/ Type C Markers at 40' o.c.

4" White Stripe

4" White Lane Line, 10' long at 40' o.c.

SHOULDER LANE AHEAD
OPEN 5 AM-8 AM
EXCEPT SAT SUN HOL.
NO TRUCKS OR BUSES

Exist. sign to remain

Tie into Exist. Pavement Markings

BEGIN SHOULDER LANE
5 AM-8 AM
EXCEPT SAT SUN HOL.
NO TRUCKS OR BUSES

Sta. 77+60
R16-8a
48"x66"

Remove exist. sign & post.
Install new sign & post.

BUCKLE UP
IT'S THE LAW
CLICK-IT OR TICKET!

Remove exist. signs & post.

NOTE:
Location of median barrier mounted sign is approximate.

RANDALL M. URAKAWA
LICENSED PROFESSIONAL ENGINEER
No. 7269-C
HAWAII, U.S.A.

THIS WORK WAS PREPARED BY ME OR UNDER MY SUPERVISION.

[Signature]
1/24/06

STATE OF HAWAII
DEPARTMENT OF TRANSPORTATION
HIGHWAYS DIVISION

SIGNING AND PAVEMENT MARKINGS
@ STA. 70+00 TO 80+00

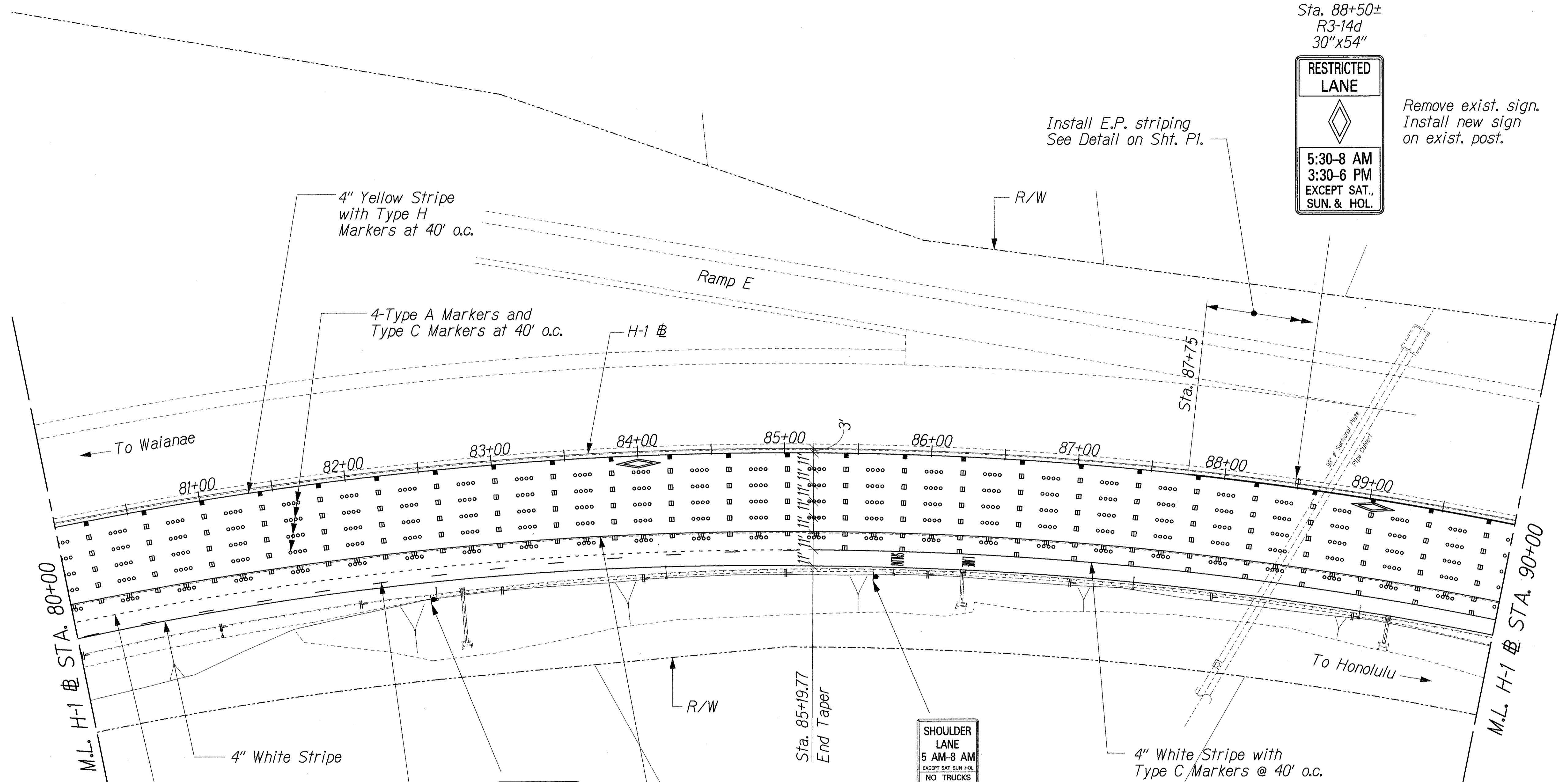
INTERSTATE ROUTE H-1 REHABILITATION
EASTBOUND LANES
WAI'AU INTERCHANGE TO KAIMAKANI STREET

Scale: 1" = 40' Date: Jan. 24, 2006

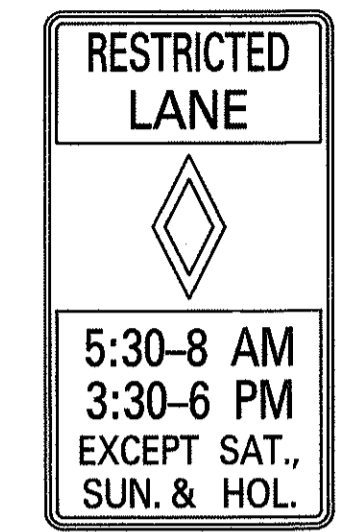
DATE	_____
SURVEY PLOTTED BY	_____
DRAWN BY	_____
DESIGNED BY	_____
CHECKED BY	_____
NOTE BOOK	_____
N.	_____

J:\COE H-1 REHAB\SIGN\SS-02.dgn

FED. ROAD DIST. NO.	STATE	FEDERAL AID PROJ. NO.	FISCAL YEAR	SHEET NO.	TOTAL SHEETS
HAWAII	HAW.	IM-H1-1(245)	2005	91	183



Sta. 88+50±
R3-14d
30"x54"



Remove exist. sign.
Install new sign
on exist. post.

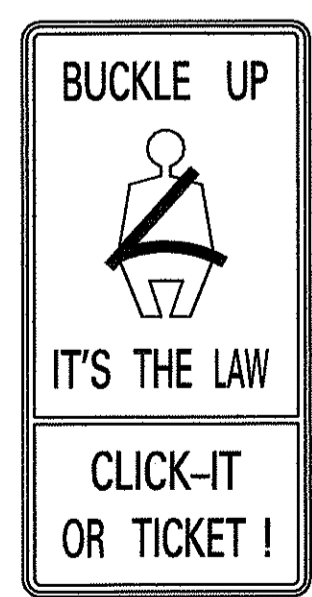
Install E.P. striping
See Detail on Sht. P1.

TRUE NORTH
SCALE: 1" = 40'



Sta. 85+60
R16-8b
48"x54"

Remove exist.
sign & post.
Install new
sign & post.



Sta. 82+50
R16-9
30"x60"
Install new
sign & post

NOTE:
Location of median barrier
mounted sign is approximate.

ORIGINAL PLAN	SURVEY PLOTTED BY	DATE
NO.	DRAWN BY	
	DESIGNED BY	
	CHECKED BY	

JG/COE H-1 REHAB/SIGN/SS-03.dgn

THIS WORK WAS PREPARED BY ME OR UNDER MY SUPERVISION.
R. Urasaki
1/2/04

STATE OF HAWAII
DEPARTMENT OF TRANSPORTATION
HIGHWAYS DIVISION

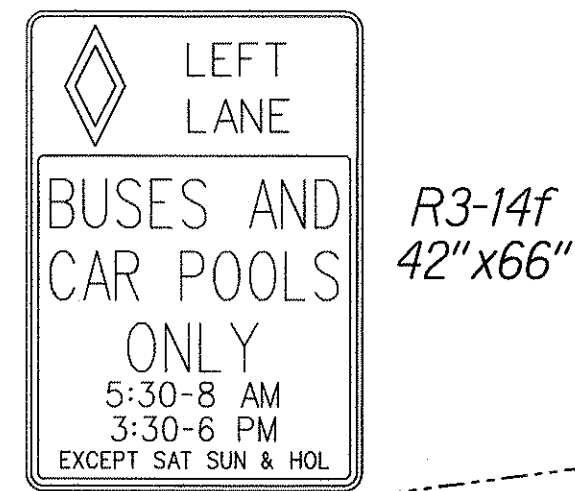
SIGNING AND PAVEMENT MARKINGS
@ STA. 80+00 TO 90+00

INTERSTATE ROUTE H-1 REHABILITATION
EASTBOUND LANES
WAI'AU INTERCHANGE TO KAIMAKANI STREET

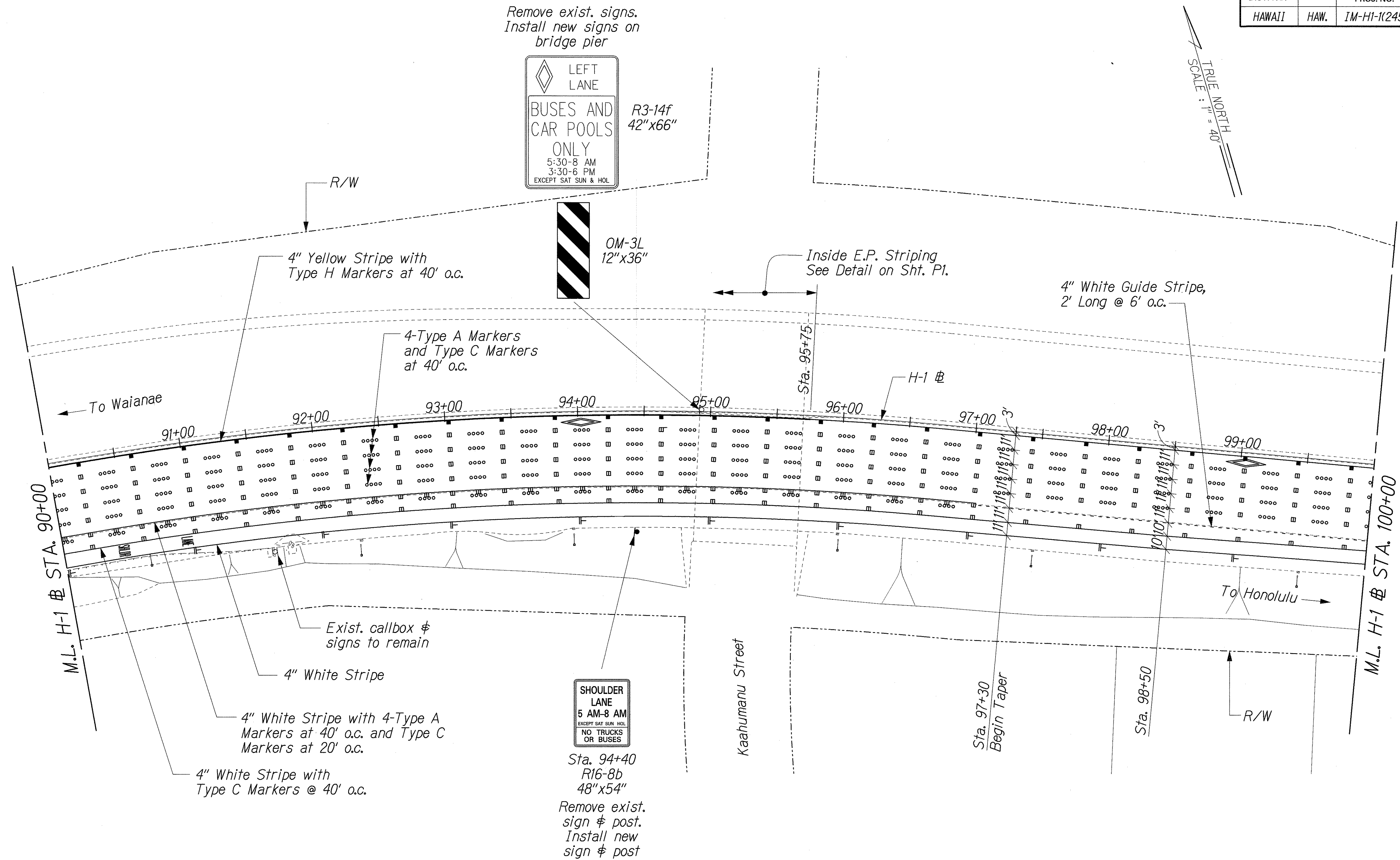
Scale: 1" = 40' Date: Jan. 24, 2006

FED. ROAD DIST. NO.	STATE	FEDERAL AID PROJ. NO.	FISCAL YEAR	SHEET NO.	TOTAL SHEETS
HAWAII	HAW.	IM-HI-1(245)	2005	92	183

Remove exist. signs.
Install new signs on
bridge pier



TRUE NORTH
SCALE: 1" = 40'



SURVEY PLOTTED BY	DATE
DRAWN BY	
TRACED BY	
DESIGNED BY	
CHECKED BY	
NOTE BOOK	
NO.	

J:\COE HI REHAB\SIGN\SS-04.dgn

THIS WORK WAS PREPARED BY ME
OR UNDER MY SUPERVISION.

Randall M. Uragami
1/24/06

STATE OF HAWAII
DEPARTMENT OF TRANSPORTATION
HIGHWAYS DIVISION

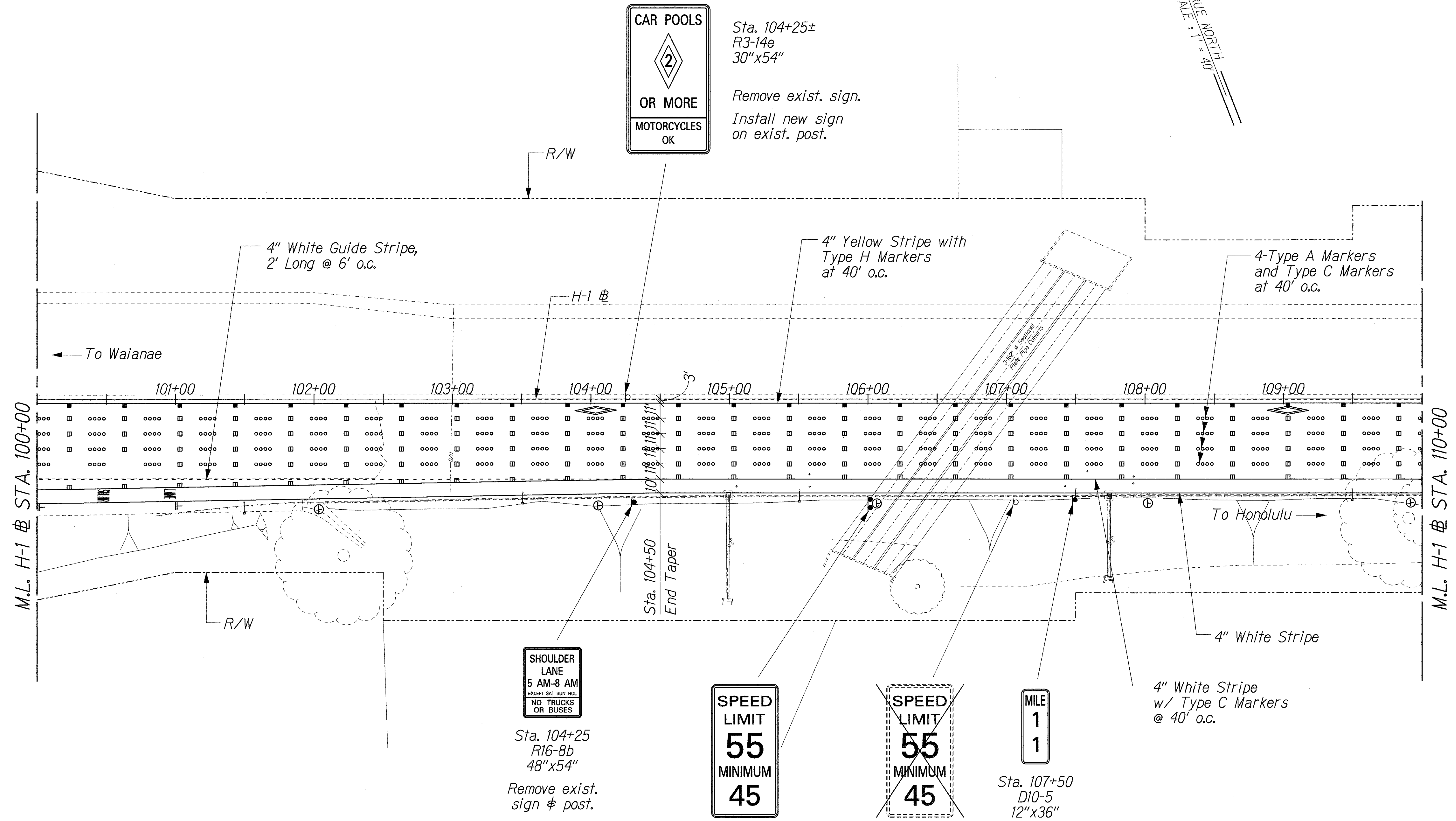
SIGNING AND PAVEMENT MARKINGS
@ STA. 90+00 TO 100+00

INTERSTATE ROUTE H-1 REHABILITATION
EASTBOUND LANES
WAI'AU INTERCHANGE TO KAIMAKANI STREET

Scale: 1" = 40' Date: Jan. 24, 2006

FED. ROAD DIST. NO.	STATE	FEDERAL AID PROJ. NO.	FISCAL YEAR	SHEET NO.	TOTAL SHEETS
HAWAII	HAW.	IM-HI-K(245)	2005	93	183

TRUE NORTH
SCALE: 1" = 40'



CAR POOLS
2
OR MORE
MOTORCYCLES
OK

Sta. 104+25±
R3-14e
30"x54"
Remove exist. sign.
Install new sign on exist. post.

SHOULDER
LANE
5 AM-8 AM
EXCEPT SAT SUN HOL.
NO TRUCKS
OR BUSES

Sta. 104+25
R16-8b
48"x54"
Remove exist. sign & post.
Install new sign & post.

SPEED
LIMIT
55
MINIMUM
45

Sta. 106+00
R2-4a(55/45)-A
48"x96"
Install new sign & posts.

~~**SPEED**
LIMIT
55
MINIMUM
45~~

Remove exist. sign & post

MILE
1
1

Sta. 107+50
D10-5
12"x36"
Remove exist. sign from St. Light Std.
Install new sign & post.

NOTE:
Location of median barrier mounted sign is approximate.

SURVEY PLOTTED BY	DATE
DRAWN BY	
DESIGNED BY	
CHECKED BY	
NOTE BOOK NO.	

J:\COE HI REHAB\SIGN\SS-05.dgn

RANDALL M. URAKAWA
LICENSED PROFESSIONAL ENGINEER
No. 7269-C
HAWAII, U.S.A.

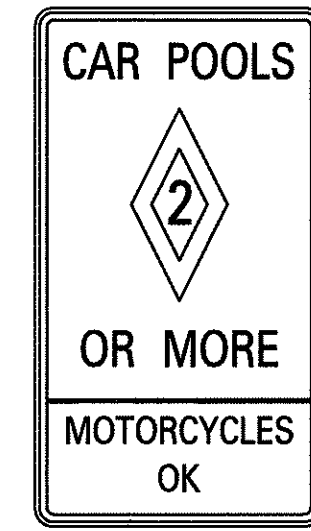
THIS WORK WAS PREPARED BY ME OR UNDER MY SUPERVISION.
R. M. URAKAWA
1/24/06

STATE OF HAWAII
DEPARTMENT OF TRANSPORTATION
HIGHWAYS DIVISION

SIGNING AND PAVEMENT MARKINGS
@ STA. 100+00 TO 110+00

INTERSTATE ROUTE H-1 REHABILITATION
EASTBOUND LANES
WAI'AU INTERCHANGE TO KAIMAKANI STREET
Scale: 1" = 40' Date: Jan. 24, 2006

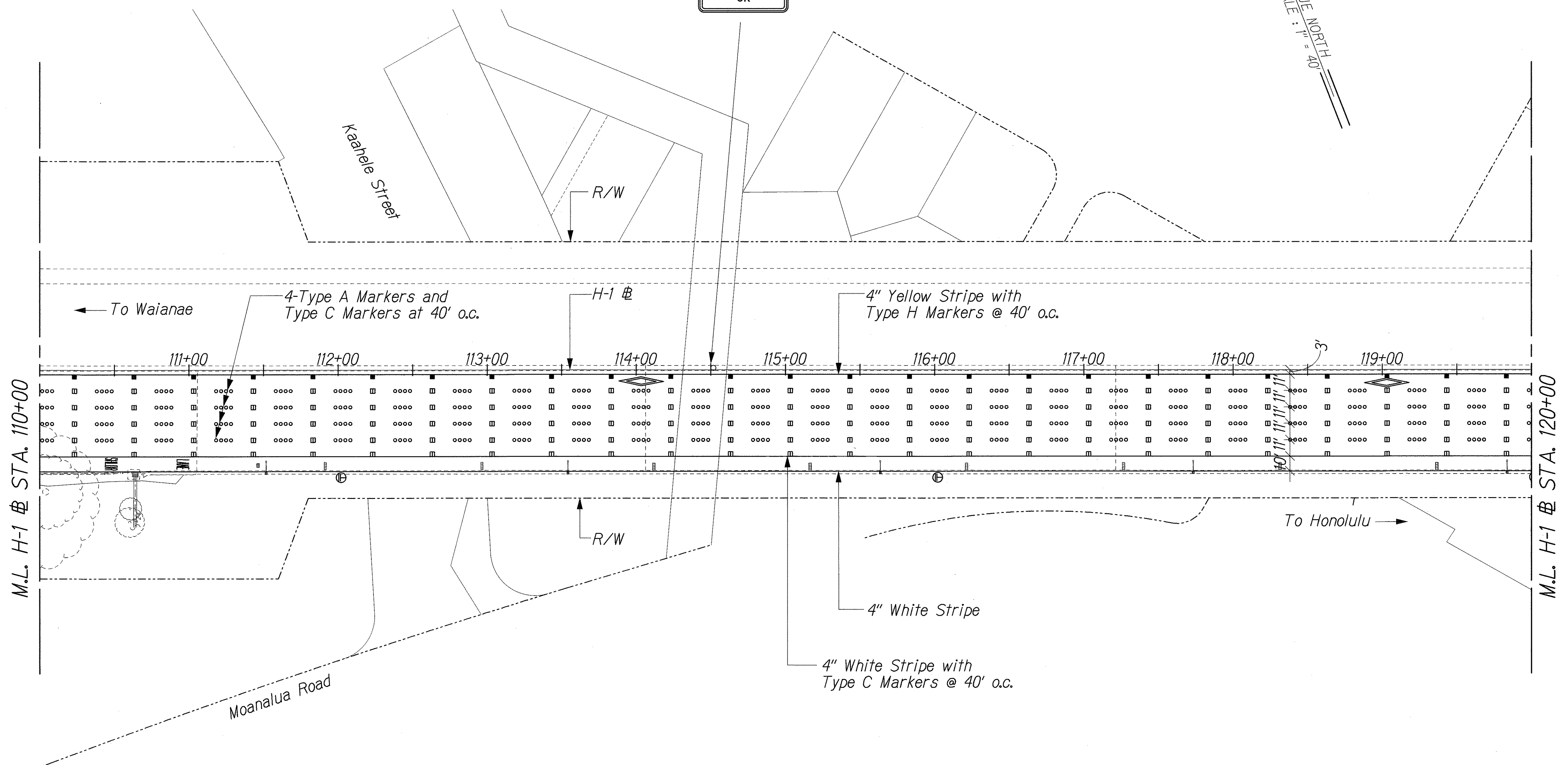
FED. ROAD DIST. NO.	STATE	FEDERAL AID PROJ. NO.	FISCAL YEAR	SHEET NO.	TOTAL SHEETS
HAWAII	HAW.	IM-H1-(245)	2005	94	183



Sta. 114+50±
R3-14e
30"x54"

Remove exist. sign.
Install new sign on exist. post.

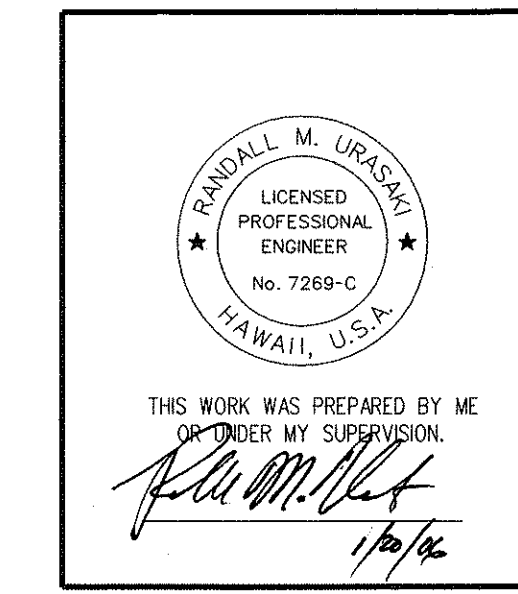
TRUE NORTH
SCALE: 1" = 40'



NOTE:
Location of median barrier mounted sign is approximate.

ORIGINAL PLAN	SURVEY PLOTTED BY	DATE
NOTE BOOK	DRAWN BY	
	DESIGNED BY	
	CHECKED BY	

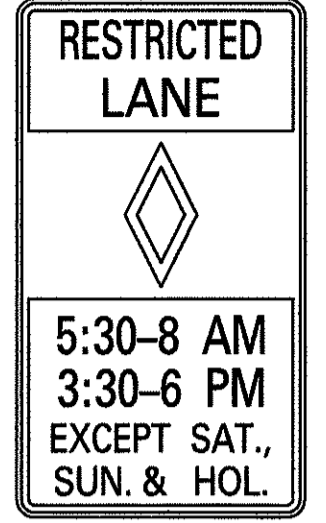
J:\COE H1 REHAB\SIGN\SS-06.dgn



STATE OF HAWAII
DEPARTMENT OF TRANSPORTATION
HIGHWAYS DIVISION
SIGNING AND PAVEMENT MARKINGS
@ STA. 110+00 TO 120+00
INTERSTATE ROUTE H-1 REHABILITATION
EASTBOUND LANES
WAI'AU INTERCHANGE TO KAIMAKANI STREET
Scale: 1" = 40' Date: Jan. 24, 2006

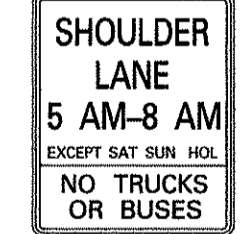
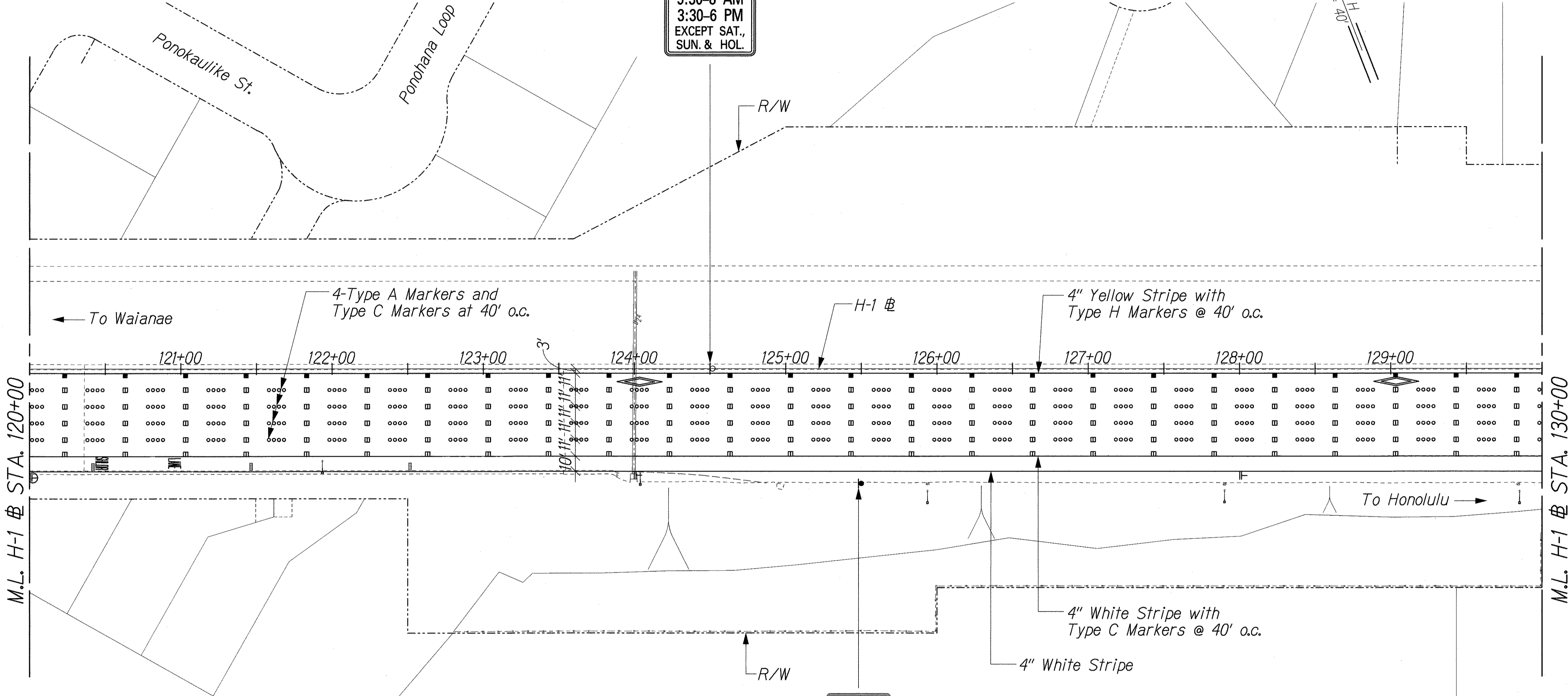
FED. ROAD DIST. NO.	STATE	FEDERAL AID PROJ. NO.	FISCAL YEAR	SHEET NO.	TOTAL SHEETS
HAWAII	HAW.	IM-H1-K(245)	2005	95	183

Sta. 124+50±
R3-14d
30"x54"



Remove exist. sign.
Install new sign
on exist. post.

TRUE NORTH
SCALE: 1" = 40'



Sta. 125+50
R16-8b
48"x54"

Install new sign & post

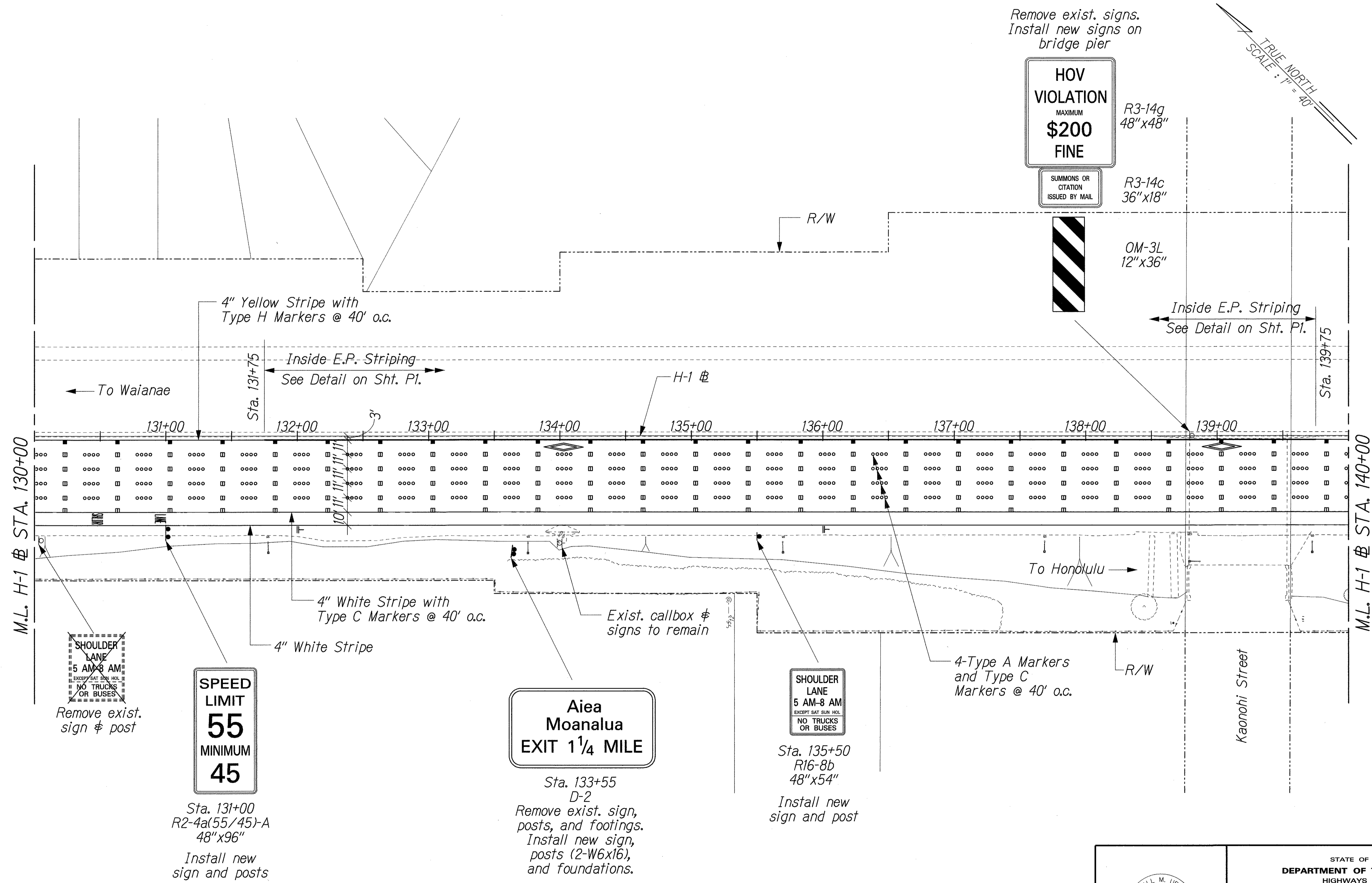
NOTE:
Location of median barrier mounted sign is approximate

ORIGINAL PLAN	SURVEY PLOTTED BY	DATE
NOTE BOOK	DRAWN BY	
	DESIGNED BY	
	CHECKED BY	

JG/COE H-1 REHAB/SIGN/SS-07.dgn

STATE OF HAWAII
DEPARTMENT OF TRANSPORTATION
HIGHWAYS DIVISION
SIGNING AND PAVEMENT MARKINGS
@ STA. 120+00 TO 130+00
INTERSTATE ROUTE H-1 REHABILITATION
EASTBOUND LANES
WAI'AU INTERCHANGE TO KAIMAKANI STREET
Scale: 1" = 40' Date: Jan. 24, 2006

FED. ROAD DIST. NO.	STATE	FEDERAL AID PROJ. NO.	FISCAL YEAR	SHEET NO.	TOTAL SHEETS
HAWAII	HAW.	IM-H1-(245)	2005	96	183



Remove exist. signs.
Install new signs on
bridge pier



R3-14g
48"x48"

R3-14c
36"x18"



OM-3L
12"x36"

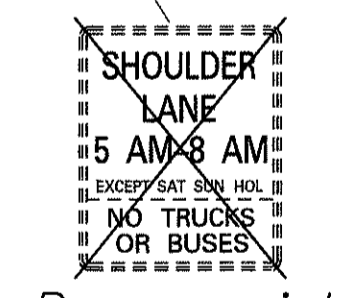
Inside E.P. Striping
See Detail on Sht. P1.

To Waianae

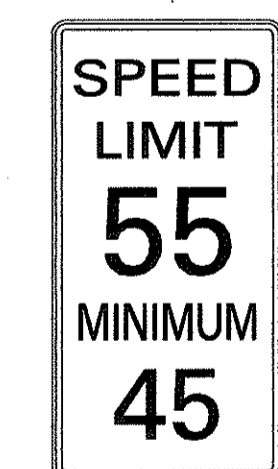
To Honolulu

M.L. H-1 @ STA. 130+00

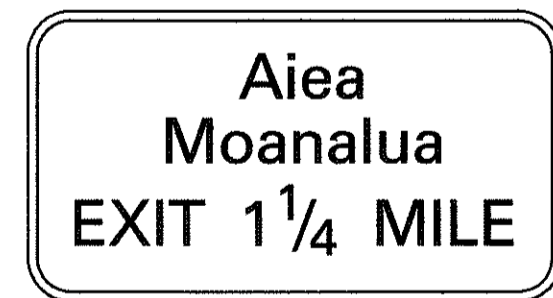
M.L. H-1 @ STA. 140+00



Remove exist.
sign & post



Sta. 131+00
R2-4a(55/45)-A
48"x96"
Install new
sign and posts



Sta. 133+55
D-2
Remove exist. sign,
posts, and footings.
Install new sign,
posts (2-W6x16),
and foundations.



Sta. 135+50
R16-8b
48"x54"
Install new
sign and post

4-Type A Markers
and Type C
Markers @ 40' o.c.

Kaonohi Street

SURVEY PLOTTED BY	DATE
DRAWN BY	
CHECKED BY	
NOTE BOOK	
NO.	

J:/COE-H1-REHAB/SIGN/SS-08.dgn

THIS WORK WAS PREPARED BY ME
OR UNDER MY SUPERVISION.
R. M. Uragami
1/24/06

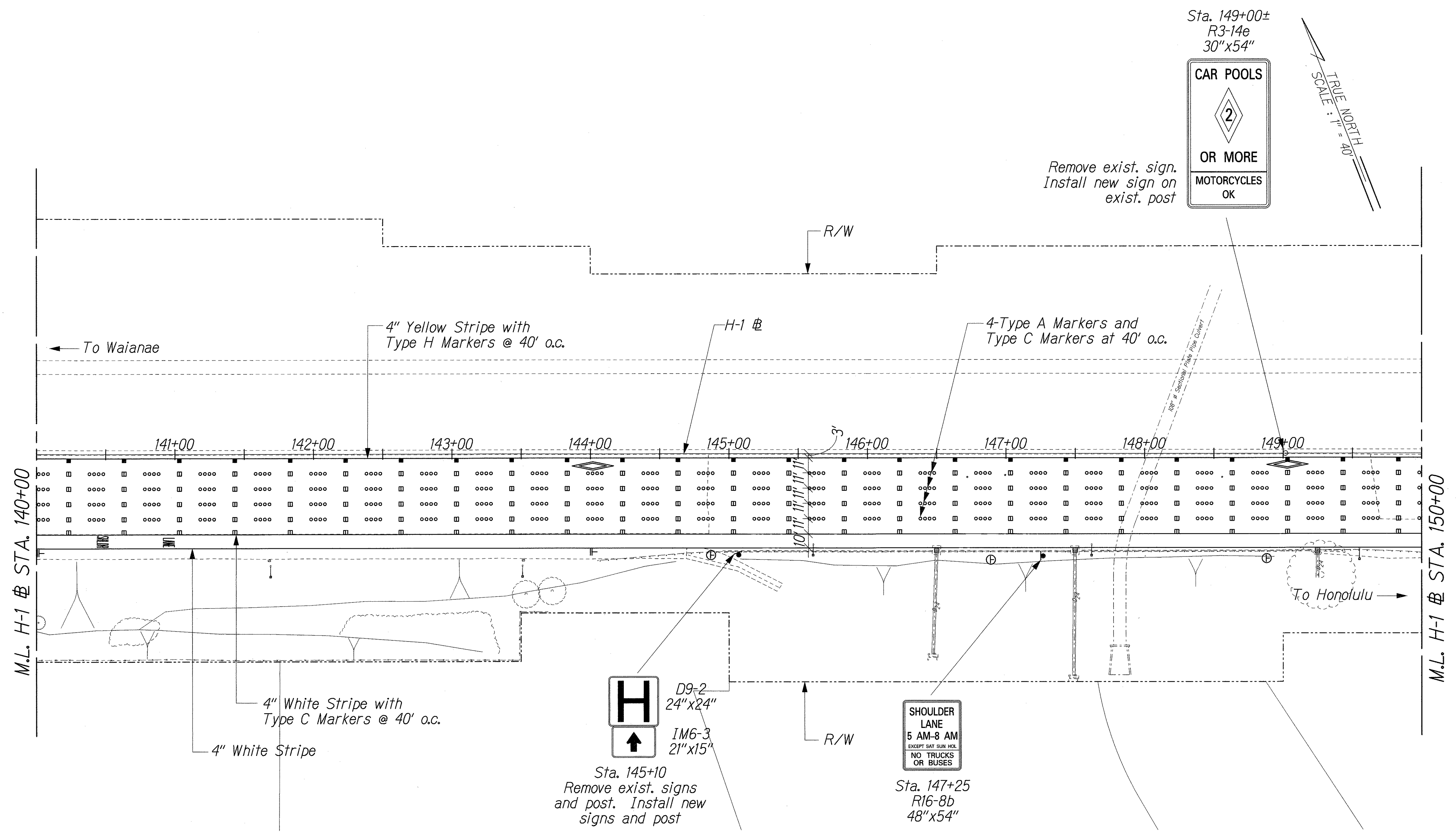
STATE OF HAWAII
DEPARTMENT OF TRANSPORTATION
HIGHWAYS DIVISION

SIGNING AND PAVEMENT MARKINGS
@ STA. 130+00 TO 140+00

INTERSTATE ROUTE H-1 REHABILITATION
EASTBOUND LANES
WAI'AU INTERCHANGE TO KAIMAKANI STREET

Scale: 1" = 40' Date: Jan. 24, 2006

FED. ROAD DIST. NO.	STATE	FEDERAL AID PROJ. NO.	FISCAL YEAR	SHEET NO.	TOTAL SHEETS
HAWAII	HAW.	IM-HI-1(245)	2005	97	183



NOTE:
Location of median barrier mounted sign is approximate

ORIGINAL PLAN	SURVEY PLOTTED BY	DATE
NOTE BOOK	DRAWN BY	
	DESIGNED BY	
	CHECKED BY	

JR/COE H-1 REHAB/SIGN/SS-09.dgn

THIS WORK WAS PREPARED BY ME OR UNDER MY SUPERVISION.

R. M. Urasaki
1/24/06

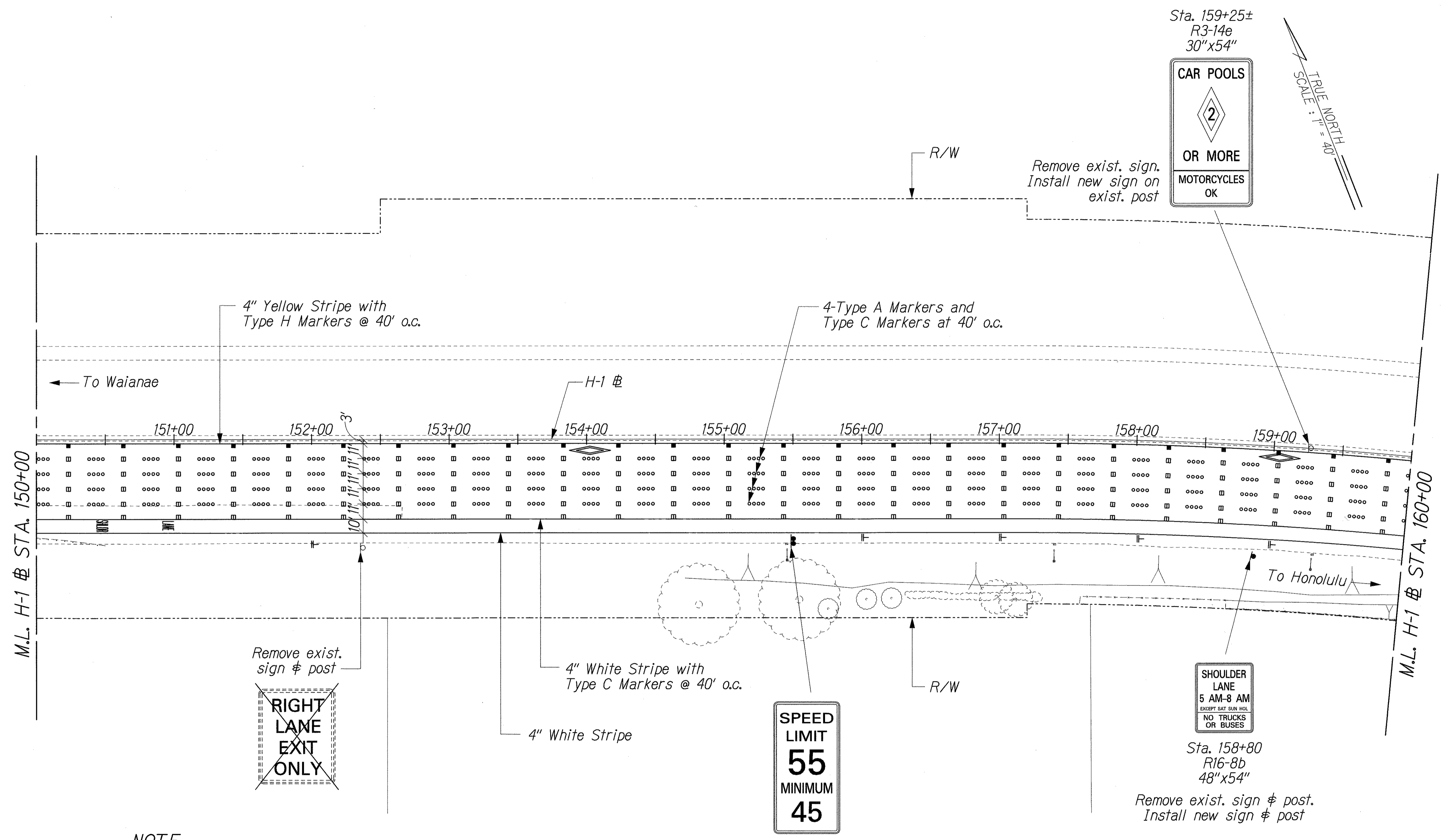
STATE OF HAWAII
DEPARTMENT OF TRANSPORTATION
HIGHWAYS DIVISION

SIGNING AND PAVEMENT MARKINGS
@ STA. 140+00 TO 150+00

INTERSTATE ROUTE H-1 REHABILITATION
EASTBOUND LANES
WAI'AU INTERCHANGE TO KAIMAKANI STREET

Scale: 1" = 40' Date: Jan. 24, 2006

FED. ROAD DIST. NO.	STATE	FEDERAL AID PROJ. NO.	FISCAL YEAR	SHEET NO.	TOTAL SHEETS
HAWAII	HAW.	IM-HI-1(245)	2005	98	183



Sta. 159+25±
R3-14e
30"x54"
CAR POOLS
OR MORE
MOTORCYCLES
OK

Remove exist. sign.
Install new sign on
exist. post

TRUE NORTH
SCALE: 1" = 40'

4" Yellow Stripe with
Type H Markers @ 40' o.c.

4-Type A Markers and
Type C Markers at 40' o.c.

← To Waianae

M.L. H-1 @ STA. 150+00

M.L. H-1 @ STA. 160+00

→ To Honolulu

Remove exist.
sign & post

RIGHT
LANE
EXIT
ONLY

4" White Stripe with
Type C Markers @ 40' o.c.

4" White Stripe

SPEED
LIMIT
55
MINIMUM
45

Sta. 155+50
R2-4a (55/45)-A
48"x96"
Remove exist.
sign from St. Light Std.
Install new sign & posts

SHOULDER
LANE
5 AM-8 AM
EXCEPT SAT SUN HOLS
NO TRUCKS
OR BUSES

Sta. 158+80
R16-8b
48"x54"
Remove exist. sign & post.
Install new sign & post

NOTE:
Location of median barrier
mounted sign is approximate

SURVEY PLOTTED BY	DATE
DRAWN BY	
DESIGNED BY	
CHECKED BY	
NOTE BOOK	
N.	

48/COE H-1 REHAB/SIGN/SS-10.dgn

RANDALL M. URAKAKI
LICENSED PROFESSIONAL ENGINEER
No. 7269-C
HAWAII, U.S.A.

THIS WORK WAS PREPARED BY ME
OR UNDER MY SUPERVISION.
R. M. URAKAKI
1/24/06

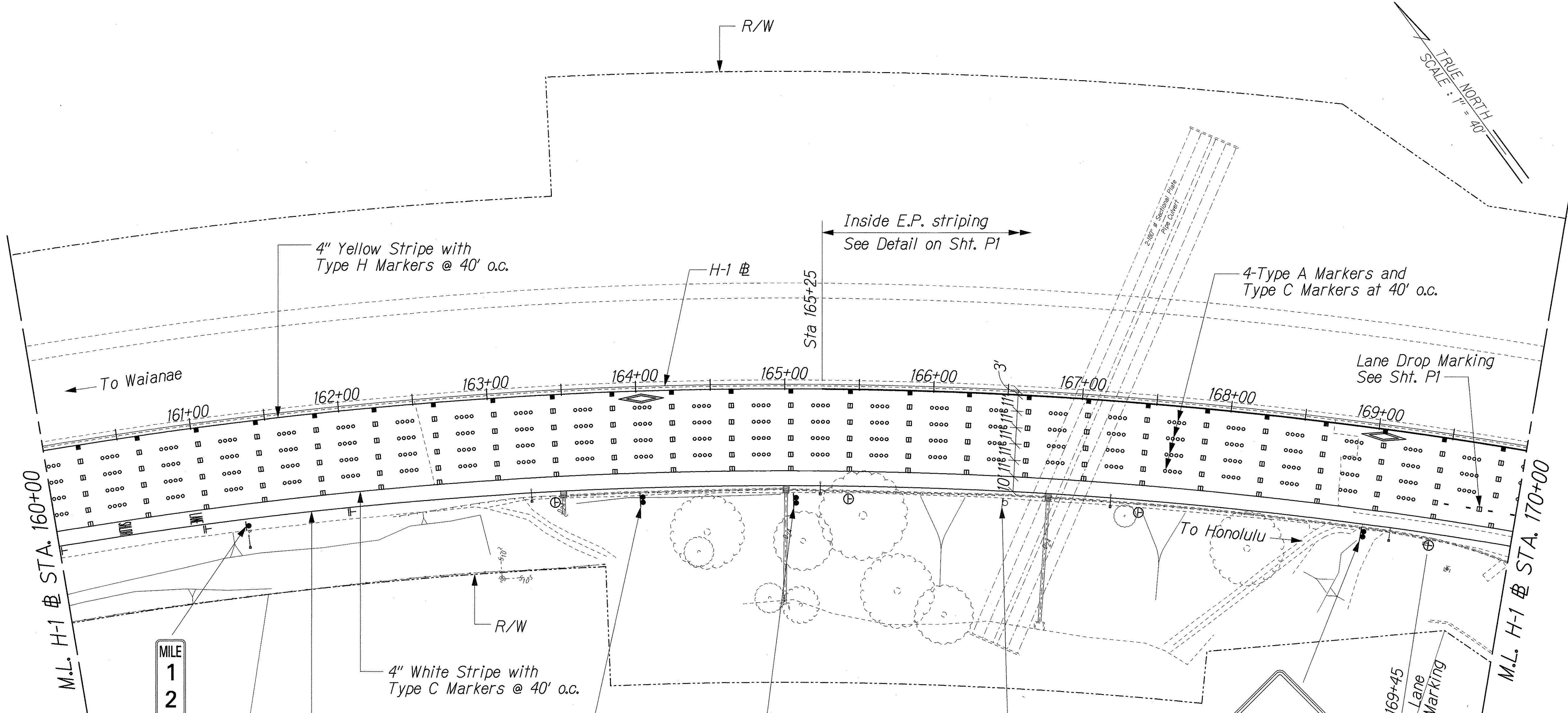
STATE OF HAWAII
DEPARTMENT OF TRANSPORTATION
HIGHWAYS DIVISION

SIGNING AND PAVEMENT MARKINGS
@ STA. 150+00 TO 160+00

INTERSTATE ROUTE H-1 REHABILITATION
EASTBOUND LANES
WAI'AU INTERCHANGE TO KAIMAKANI STREET

Scale: 1" = 40' Date: Jan. 24, 2006

FED. ROAD DIST. NO.	STATE	FEDERAL AID PROJ. NO.	FISCAL YEAR	SHEET NO.	TOTAL SHEETS
HAWAII	HAW.	IM-HI-1(245)	2005	99	183



MILE 1 2
 Sta. 161+25
 D10-5
 12"x36"
 Remove exist. sign & post.
 Install new sign & post

4" White Stripe
 4" White Stripe with Type C Markers @ 40' o.c.

SHOULDER LANE ENDS
 1000 FEET

Sta. 164+00
 W9-1(S)-B
 48"x48"
 W16-2(1000)
 30"x24"
 Install new sign & post

Aiea Moanalua EXIT 1/2 MILE

Sta. 165+00
 D-3
 Remove exist. sign, posts, and footings. Install new sign, posts (2-W6x16), and foundations (Type VI Footings).

~~**RIGHT LANE EXIT ONLY**~~
 Remove exist. sign & posts.

SHOULDER LANE ENDS
 500 FEET
 Sta. 169+00
 W9-1(S)-B
 48"x48"
 W16-2(500)
 30"x24"
 Install new sign & post

SURVEY PLOTTED BY	DATE
DRAWN BY	
CHECKED BY	
NOTE BOOK	
N.	

42/COE HI REHAB/SIGN/SS-11.dgn

RANDALL M. URAKAMI
 LICENSED PROFESSIONAL ENGINEER
 No. 7269-C
 HAWAII, U.S.A.
 THIS WORK WAS PREPARED BY ME OR UNDER MY SUPERVISION
 [Signature]
 1/24/06

STATE OF HAWAII
 DEPARTMENT OF TRANSPORTATION
 HIGHWAYS DIVISION
SIGNING AND PAVEMENT MARKINGS
@ STA. 160+00 TO 170+00
 INTERSTATE ROUTE H-1 REHABILITATION
 EASTBOUND LANES
 WAIU INTERCHANGE TO KAIMAKANI STREET
 Scale: 1" = 40' Date: Jan. 24, 2006

FED. ROAD DIST. NO.	STATE	FEDERAL AID PROJ. NO.	FISCAL YEAR	SHEET NO.	TOTAL SHEETS
HAWAII	HAW.	IM-HI-1(245)	2005	100	183

HOV VIOLATION
MAXIMUM
\$200 FINE
R3-14g
48"x48"

SUMMONS OR CITATION
ISSUED BY MAIL
R3-14c
36"x18"



OM-3L
12"x36"
Remove exist. signs.
Install new signs on
bridge pier

4" Yellow Stripe
w/ Type H Markers
@ 40' o.c.

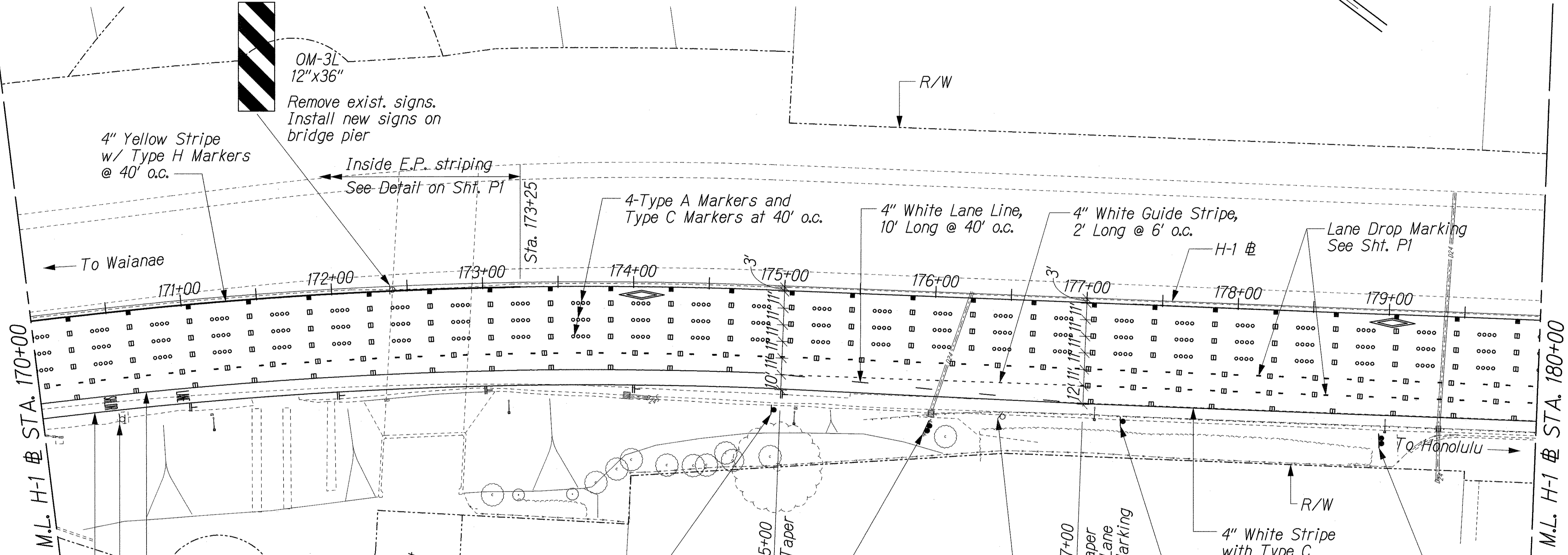
Inside E.P. striping
See Detail on Sht. P1

4-Type A Markers and
Type C Markers at 40' o.c.

4" White Lane Line,
10' Long @ 40' o.c.

4" White Guide Stripe,
2' Long @ 6' o.c.

Lane Drop Marking
See Sht. P1



TRUE NORTH
SCALE: 1" = 40'

M.L. H-1 @ STA. 170+00

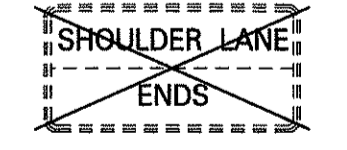
M.L. H-1 @ STA. 180+00

4" White Stripe with
Type C Markers @ 40' o.c.

Exist. callbox &
signs to remain

4" White Stripe

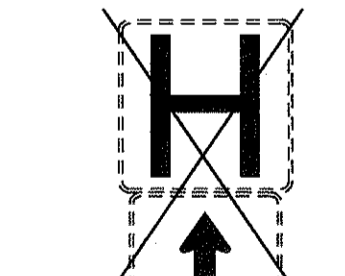
END SHOULDER LANE
R16-8c
48"x33"



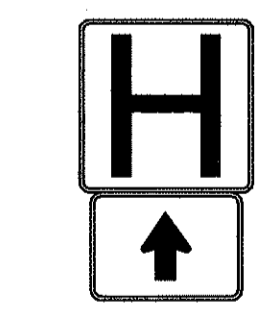
Sta. 175+00
Remove exist.
sign & post.
Install new
sign & post

Aiea Right Lane
Sta. 176+00
D-4

Remove exist. sign, posts,
and footings. Install new
sign, posts (2-W6x12), and
foundations (Type VI footings).



Remove exist.
signs & post



Sta. 177+25
D9-2
24"x24"
IM6-3
21"x15"

Install new
signs & post

Aiea EXIT 1/4 MILE
Sta. 179+00
D-5

Remove exist. sign, posts,
and footings. Install new
sign, posts (2-W6x12), and
foundations (Type VI footings).

SURVEY PLOTTED BY	DATE
DRAWN BY	
DESIGNED BY	
CHECKED BY	
NOTE BOOK	
N.	

J:\COE HI REHAB\SIGN\SS-12.dgn

RANDALL M. URAKAKI
LICENSED PROFESSIONAL ENGINEER
No. 7289-C
HAWAII, U.S.A.

THIS WORK WAS PREPARED BY ME
OR UNDER MY SUPERVISION.
[Signature]
1/20/06

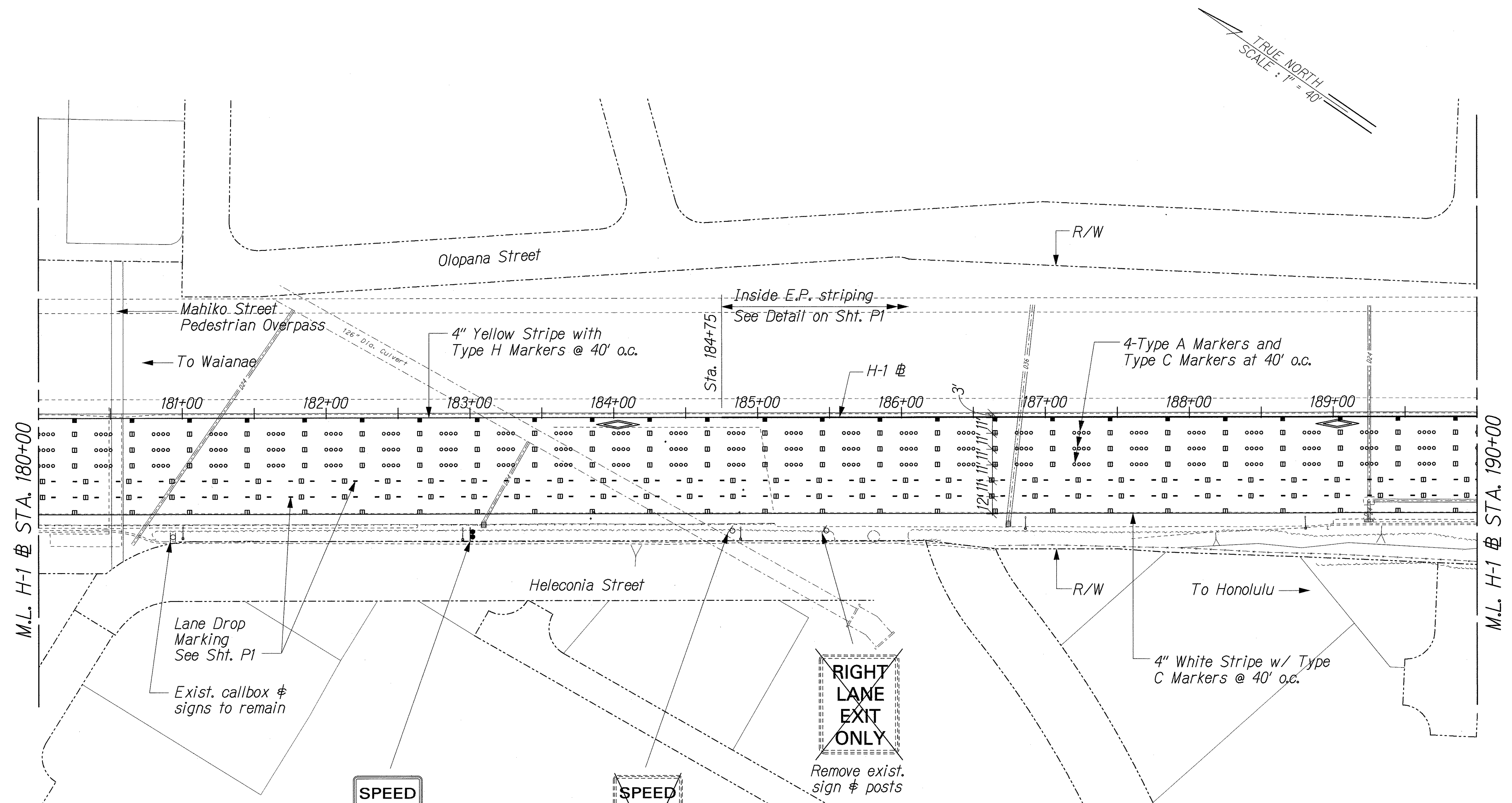
STATE OF HAWAII
DEPARTMENT OF TRANSPORTATION
HIGHWAYS DIVISION

SIGNING AND PAVEMENT MARKINGS
@ STA. 170+00 TO 180+00

INTERSTATE ROUTE H-1 REHABILITATION
EASTBOUND LANES
WAI'AU INTERCHANGE TO KAIMAKANI STREET

Scale: 1" = 40' Date: Jan. 24, 2006

FED. ROAD DIST. NO.	STATE	FEDERAL AID PROJ. NO.	FISCAL YEAR	SHEET NO.	TOTAL SHEETS
HAWAII	HAW.	IM-HI-1(245)	2005	101	183



SPEED LIMIT
55
MINIMUM
45

Sta. 183+00
R2-4a(55/45)-A
48" x 96"
Install new sign and posts

~~**SPEED LIMIT**
55
MINIMUM
45~~

Remove exist. sign & posts

RIGHT LANE EXIT ONLY

Remove exist. sign & posts

ORIGINAL PLAN	DATE
SURVEY PLOTTED BY	
DRAWN BY	
DESIGNED BY	
CHECKED BY	
NO. _____	

J:\CDE HI REHAB\SIGN\SS-13.dgn

THIS WORK WAS PREPARED BY ME OR UNDER MY SUPERVISION

R. Urasaki
1/24/06

STATE OF HAWAII
DEPARTMENT OF TRANSPORTATION
HIGHWAYS DIVISION

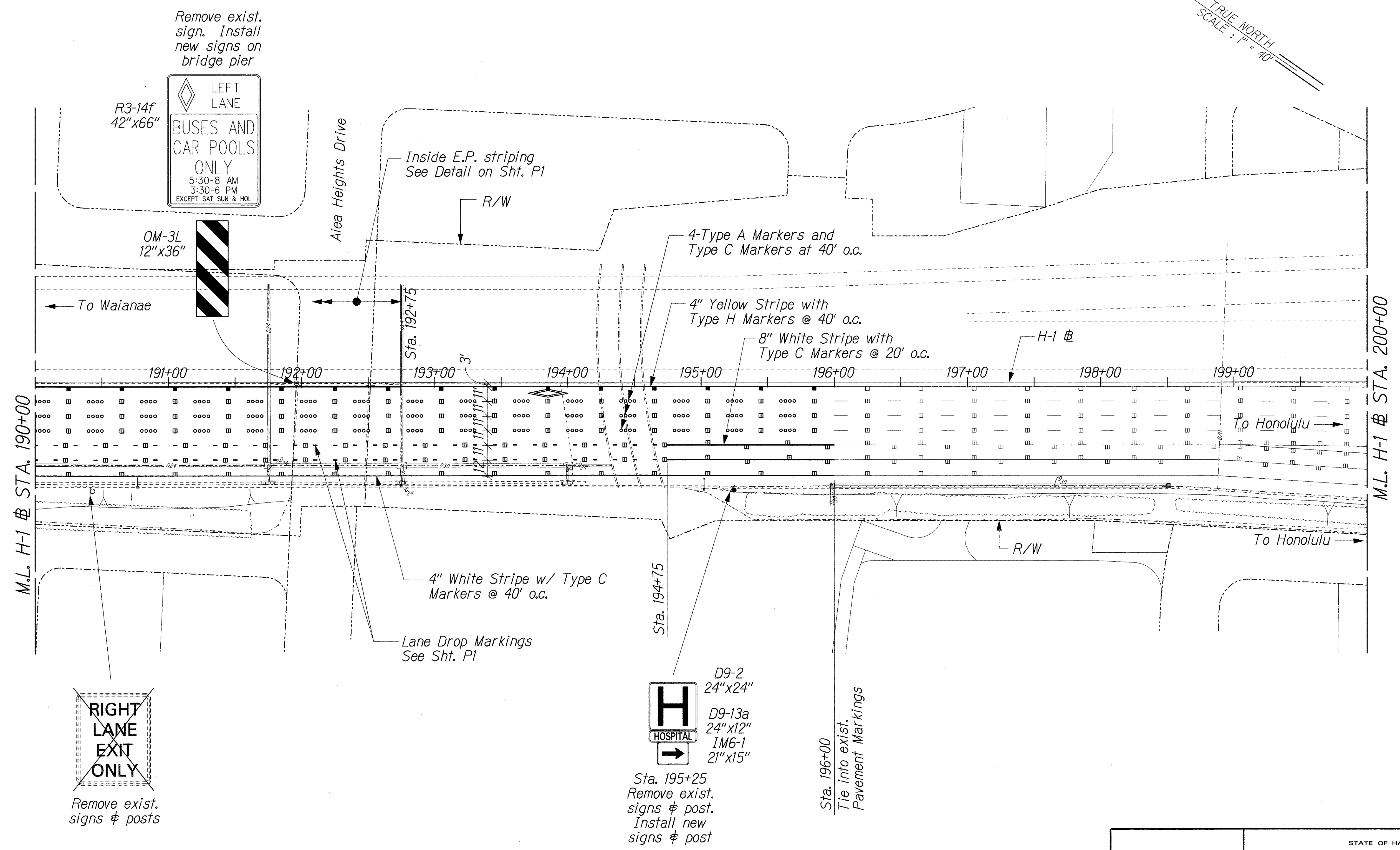
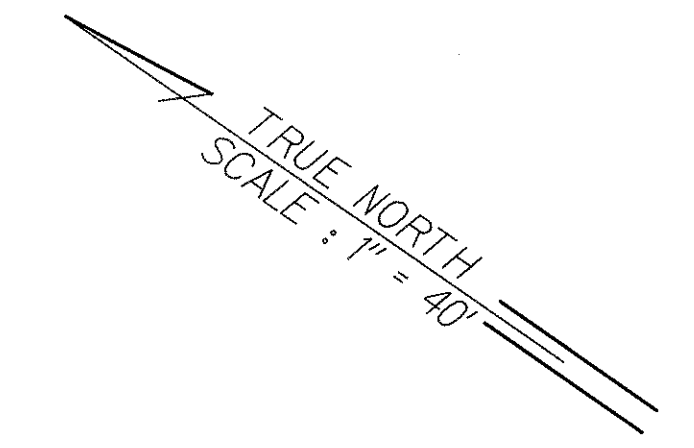
SIGNING AND PAVEMENT MARKINGS
@ STA. 180+00 TO 190+00

INTERSTATE ROUTE H-1 REHABILITATION
EASTBOUND LANES
WAI'AU INTERCHANGE TO KAIMAKANI STREET

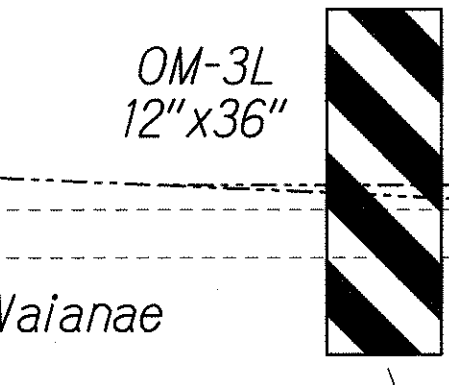
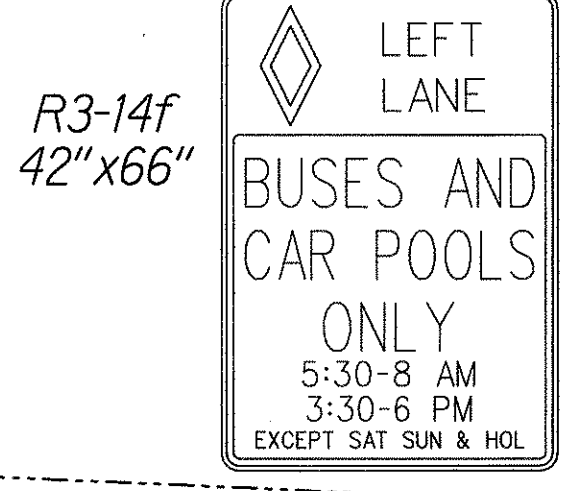
Scale: 1" = 40' Date: Jan. 24, 2006

SHEET No. P14 OF 18 SHEETS

FED. ROAD DIST. NO.	STATE	FEDERAL AID PROJ. NO.	FISCAL YEAR	SHEET NO.	TOTAL SHEETS
HAWAII	HAW.	IM-HI-1(245)	2005	102	183



Remove exist. sign. Install new signs on bridge pier



To Waianae

Inside E.P. striping See Detail on Sht. P1

4-Type A Markers and Type C Markers at 40' o.c.

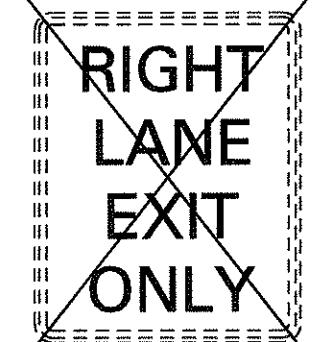
4" Yellow Stripe with Type H Markers @ 40' o.c.

8" White Stripe with Type C Markers @ 20' o.c.

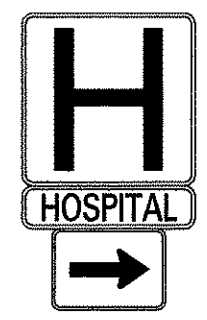
To Honolulu

4" White Stripe w/ Type C Markers @ 40' o.c.

Lane Drop Markings See Sht. P1



Remove exist. signs & posts



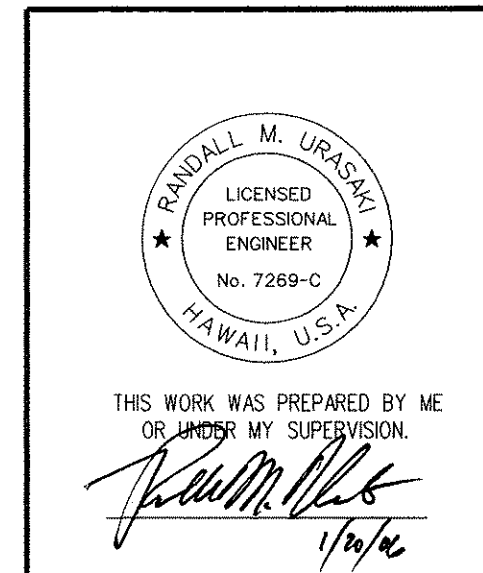
D9-2 24"x24"
D9-13a 24"x12"
IM6-1 21"x15"

Sta. 195+25
Remove exist. signs & post.
Install new signs & post

Sta. 196+00
Tie into exist. Pavement Markings

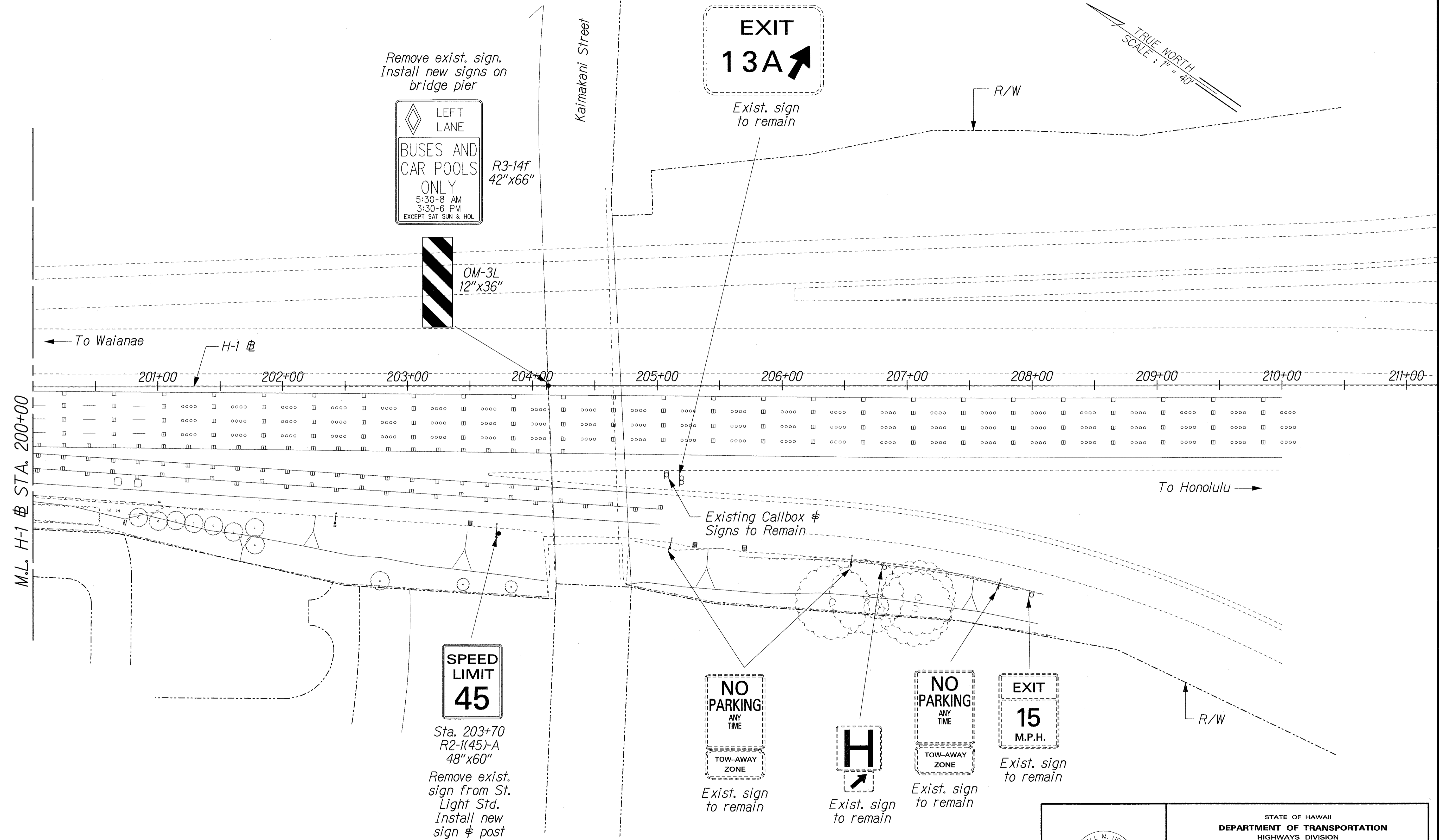
ORIGINAL PLAN	SURVEY PLOTTED BY	DATE
NOTE BOOK	DRAWN BY	
	DESIGNED BY	
	CHECKED BY	

JJ/COE HI-1 REHAB/SIGN/SS-H4dgn



STATE OF HAWAII
DEPARTMENT OF TRANSPORTATION
HIGHWAYS DIVISION
SIGNING AND PAVEMENT MARKINGS
@ STA. 190+00 TO STA. 200+00
INTERSTATE ROUTE H-1 REHABILITATION
EASTBOUND LANES
WAI'AU INTERCHANGE TO KAIMAKANI STREET
Scale: 1" = 40' Date: Jan. 24, 2006

FED. ROAD DIST. NO.	STATE	FEDERAL AID PROJ. NO.	FISCAL YEAR	SHEET NO.	TOTAL SHEETS
HAWAII	HAW.	IM-HI-1(245)	2005	103	183



TRUE NORTH
SCALE: 1" = 40'

DATE	_____
SURVEY PLOTTED BY	_____
DRAWN BY	_____
DESIGNED BY	_____
CHECKED BY	_____
NOTE BOOK	_____
N.	_____

J:/COE HI-1 REHAB/SIGN/SS-15.dgn

RANDALL M. URALSKY
LICENSED PROFESSIONAL ENGINEER
No. 7269-C
HAWAII, U.S.A.

THIS WORK WAS PREPARED BY ME OR UNDER MY SUPERVISION.

Randall M. Uralsky
1/24/06

STATE OF HAWAII
DEPARTMENT OF TRANSPORTATION
HIGHWAYS DIVISION

SIGNING AND PAVEMENT MARKINGS
@ STA. 200+00 TO STA. 210+00

INTERSTATE ROUTE H-1 REHABILITATION
EASTBOUND LANES
WAI'AU INTERCHANGE TO KAIMAKANI STREET

Scale: 1" = 40' Date: Jan. 24, 2006