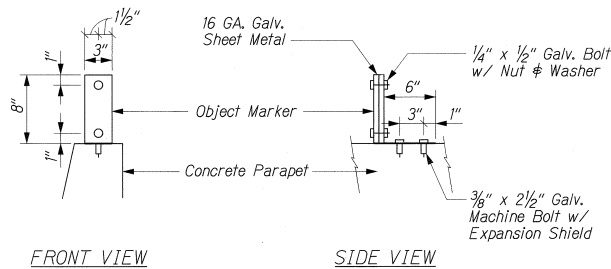


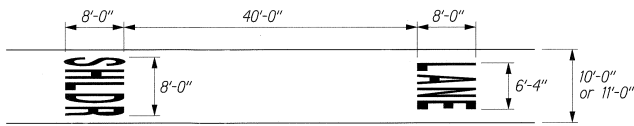
FED. ROAD DIST. NO.	STATE	FEDERAL AID PROJ. NO.	FISCAL YEAR	SHEET NO.	TOTAL SHEETS
HAWAII	HAW.	1M-HI-(1245)	2005	88	183



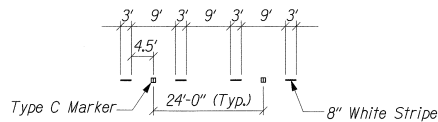
FRONT VIEW

SIDE VIEW

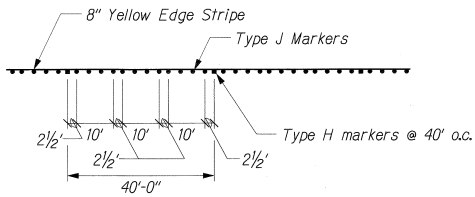
OM2 MARKER MOUNTED ON CONCRETE PARAPET
Not to Scale



TYPICAL PAVEMENT WORDS ON SHOULDER LANE
Not to Scale



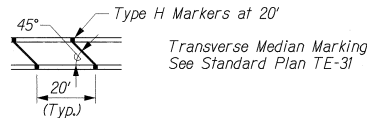
LANE DROP MARKING
Not to Scale



INSIDE E.P. STRIPING DETAIL
Not to Scale

LEGEND:

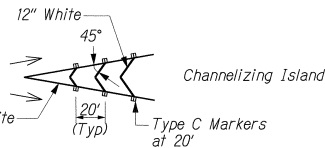
- 4" White Stripe
- 4" White Stripe with Type C Markers at 40' o.c.
- 4" Yellow Stripe with Type H Markers at 40' o.c.
- ∞ ■ ∞ ■ 4-Type A Markers and Type C Markers at 40' o.c.
- 4" White Stripe, with 4-Type A Markers at 40' o.c. and Type C Markers at 20' o.c.
- 8" White Stripe with Type C Markers at 20' o.c.
- - - - - 4" White Guide Stripe, 2' long at 6' o.c.
- 4" White Lane Lines, 10' long at 40' o.c.
- ■ New or Relocated Sign
- ◻ Existing Sign
- ← Direction of Traffic



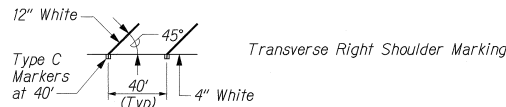
Transverse Median Marking
See Standard Plan TE-31

SHLDR

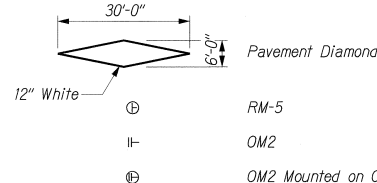
Pavement Word



Channelizing Island



Transverse Right Shoulder Marking



Pavement Diamond

- ⊕ RM-5
- ⊖ OM2
- ⊕ OM2 Mounted on Concrete Parapet See Detail this Sheet

ABBREVIATIONS:

RM Reflector Markers

SIGN LEGEND:



SIGNING NOTES:

- Sign details shall conform to the latest editions and amendments of the following FHWA publications: "Manual on Uniform Traffic Control Devices for Streets and Highways", "Standard Highway Signs" and "Standard Alphabets for Highway Signs".
- For Miscellaneous Sign Details, see Standard Plan TE-01 to TE-18.
- Existing Signs to be removed shall be disposed of by the Contractor. Removal of signs shall also include the removal of post and foundation to a minimum height of 1-foot below the ground. Payment for the removal of such signs shall be incidental to the various contract items.
- The Contractor shall backfill all holes, depressions and pits left by the removal of the existing signs with embankment material and grass all areas exposed in accordance with Specifications Section 618-Grassed Surfaces.
- The cost of trimming existing vegetation for installation of the sign and to provide a clear view of the sign shall be considered incidental to the sign.

PAVEMENT MARKING NOTES:

- All pavement striping, legends and symbols shall be retroreflective thermoplastic compound pavement markings.
- Location of pavement markers is shown schematically. For exact location of markers in relation to stripe, see Standard Plans TE-30, TE-31 & TE-32.
- Removal of existing pavement markings shall be considered incidental to the various contract items.

DESIGNED BY	DATE
DRAWN BY	
CHECKED BY	
IN CHARGE	
APPROVED BY	
DATE	

L:\CODE HI REHAB\SIGN\SS-NOTES.dgn

	<p>STATE OF HAWAII DEPARTMENT OF TRANSPORTATION HIGHWAYS DIVISION SIGNING AND PAVEMENT MARKINGS NOTES AND LEGEND</p>
	<p>INTERSTATE ROUTE H-1 REHABILITATION EASTBOUND LANES WAI'AU INTERCHANGE TO KAI'IAKANI STREET Scale: None Date: Jan. 24, 2006</p>

SHEET No. 88 OF 18 SHEETS