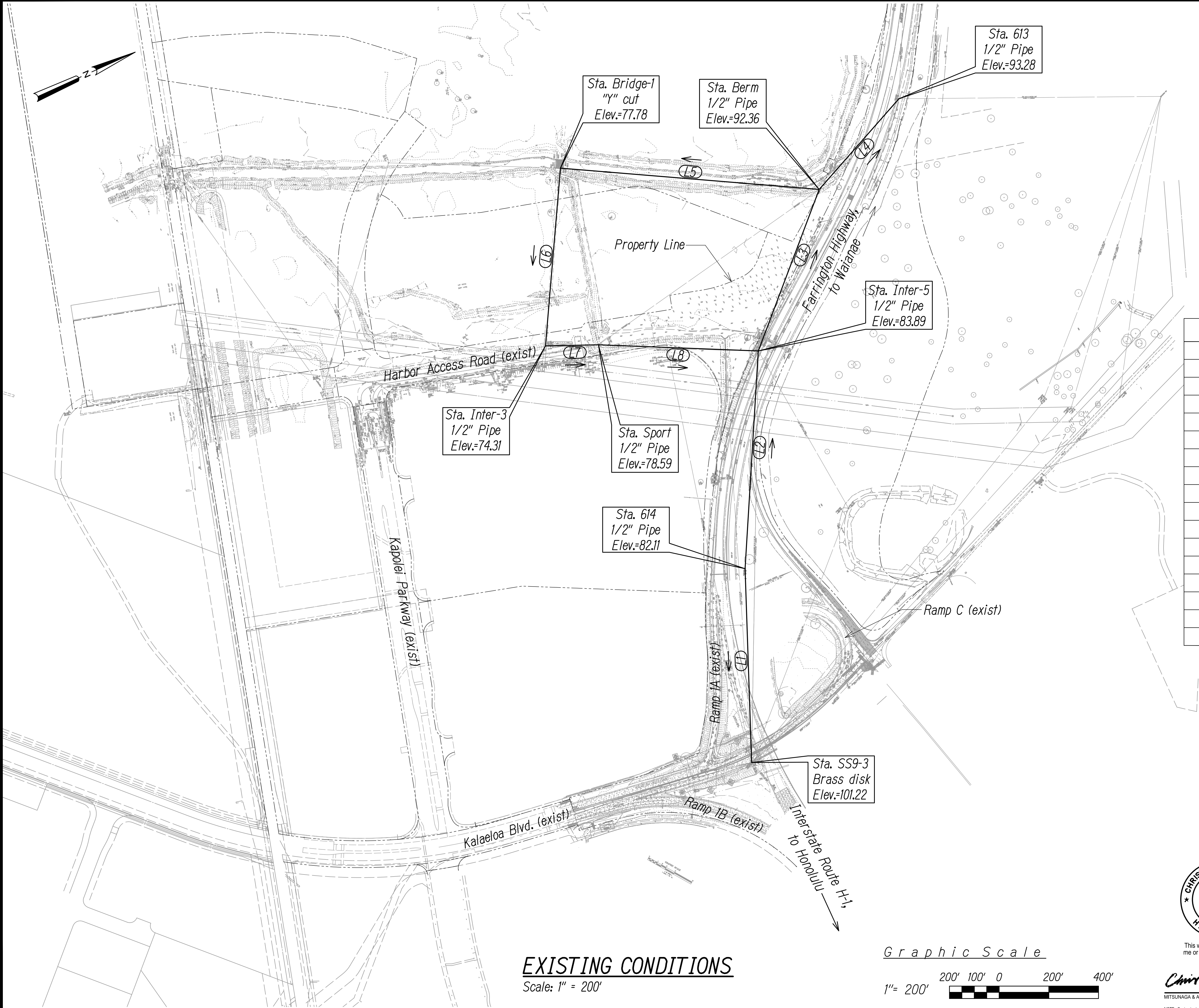


FED. ROAD DIST. NO.	STATE	FED. AID PROJ. NO.	FISCAL YEAR	SHEET NO.	TOTAL SHEETS
HAWAII	HAW.	NH-HI-1(271)	2022	18	167

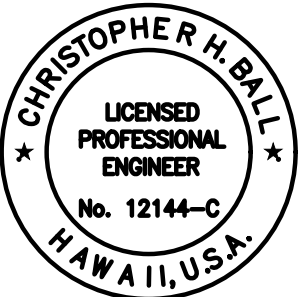
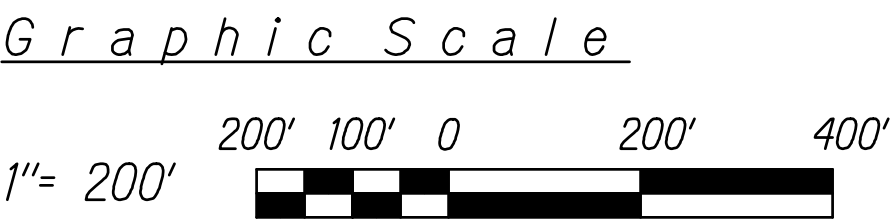
Legend  
----- Property Line

Horizontal Traverse Data			
Benchmark	Line #	Length	Direction
Sta. 614	L1	780.84	292° 33' 05"
Sta. SS9-3			
Sta. 614	L2	878.22	117° 58' 13"
Sta. Inter-5			
Sta. Inter-5	L3	695.03	135° 08' 32"
Sta. Berm			
Sta. Berm	L4	485.99	155° 47' 51"
Sta. 613			
Sta. Berm	L5	1045.24	29° 11' 40"
Sta. Bridge-1			
Sta. Bridge-1	L6	718.38	299° 18' 27"
Sta. Inter-3			
Sta. Inter-3	L7	213.23	203° 14' 06"
Sta. Sport			
Sta. Sport	L8	644.22	206° 42' 27"
Sta. Inter-5			

SURVEY PLOTTED BY	DATE
DESIGNED BY	
NOTED BY	
CHECKED BY	



EXISTING CONDITIONS  
Scale: 1" = 200'



This work was prepared by me or under my supervision  
Chris Ball  
MITSUNAGA & ASSOCIATES, INC.  
4/30/2024  
NOTE: Contractor to check and verify dimensions at job before proceeding with work.

STATE OF HAWAII  
DEPARTMENT OF TRANSPORTATION  
HIGHWAYS DIVISION

EXISTING CONDITIONS

INTERSTATE ROUTE H-1  
ADDITION AND MODIFICATION OF FREEWAY ACCESS  
(Kapolei Interchange Complex), Phase 3  
Federal Aid Project No. NH-HI-1(271)

Scale: As Noted      Date: August 2022

SHEET NO. C-2 OF 167 SHEETS