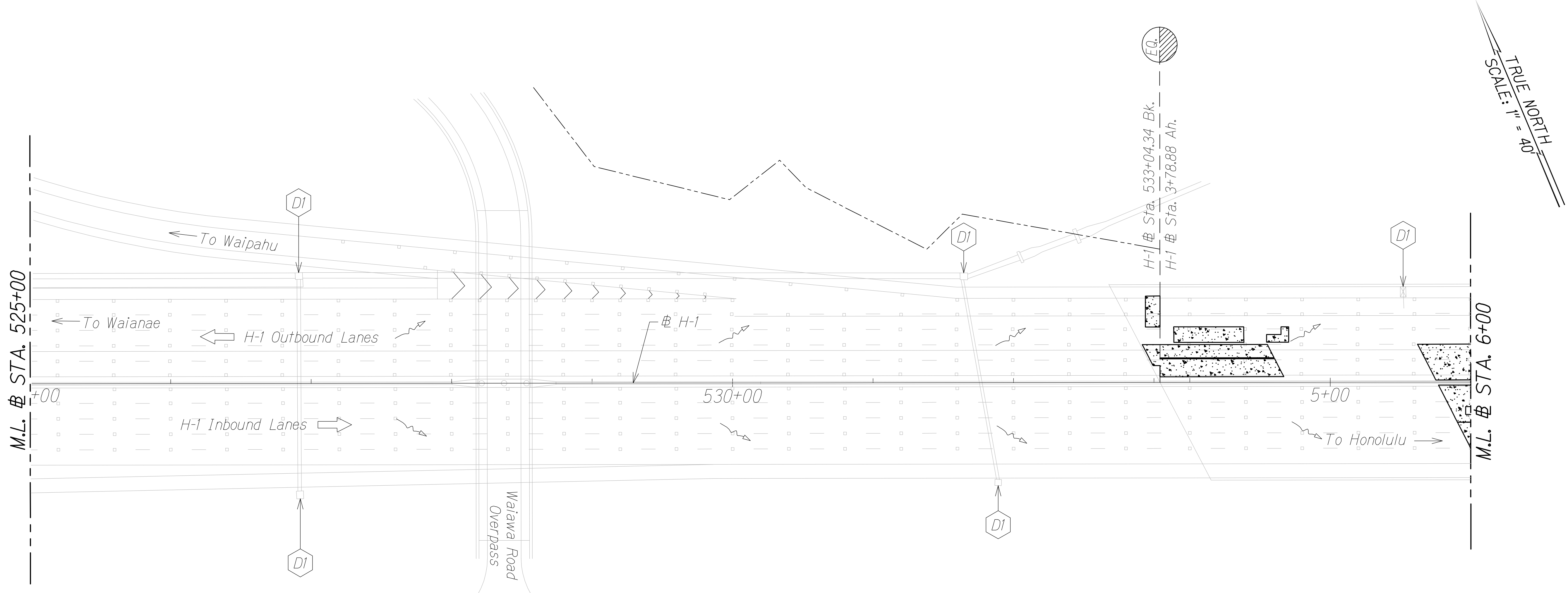


FED. ROAD DIST. NO.	STATE	FED. AID PROJ. NO.	FISCAL YEAR	SHEET NO.	TOTAL SHEETS
HAWAII	HAW.	BR-HI-1 (263)	2012	7	46

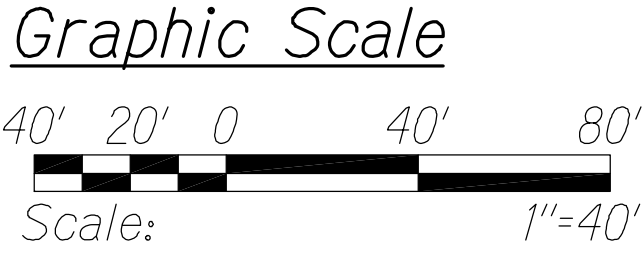


QC/QA REVIEW	100%	DATE	June 1, 2016
BY			
BY			
BY			

SURVEY PLOTTED BY	DATE
DRAWN BY	
DESIGNED BY	
QUANTITIES BY	
CHECKED BY	

Legend:

- Deck Repair
- Contractor to Provide Drain Inlet Protection Per Erosion Control Detail Sheet 9
- Drainage Flow Direction Arrow



EROSION CONTROL PLAN
STA. 525+00 TO # STA. 6+00
Scale: 1" = 40'

LEGEND FOR AS-BUILT POSTINGS

- Squiggly line for as-built deletion
- Double line for as-built deletion
- Roadway Text for as-built posting

THIS WORK WAS PREPARED BY ME OR UNDER MY SUPERVISION.

4/30/18
SIGNATURE EXPIRATION DATE OF THE LICENSE

STATE OF HAWAII
DEPARTMENT OF TRANSPORTATION
HIGHWAYS DIVISION

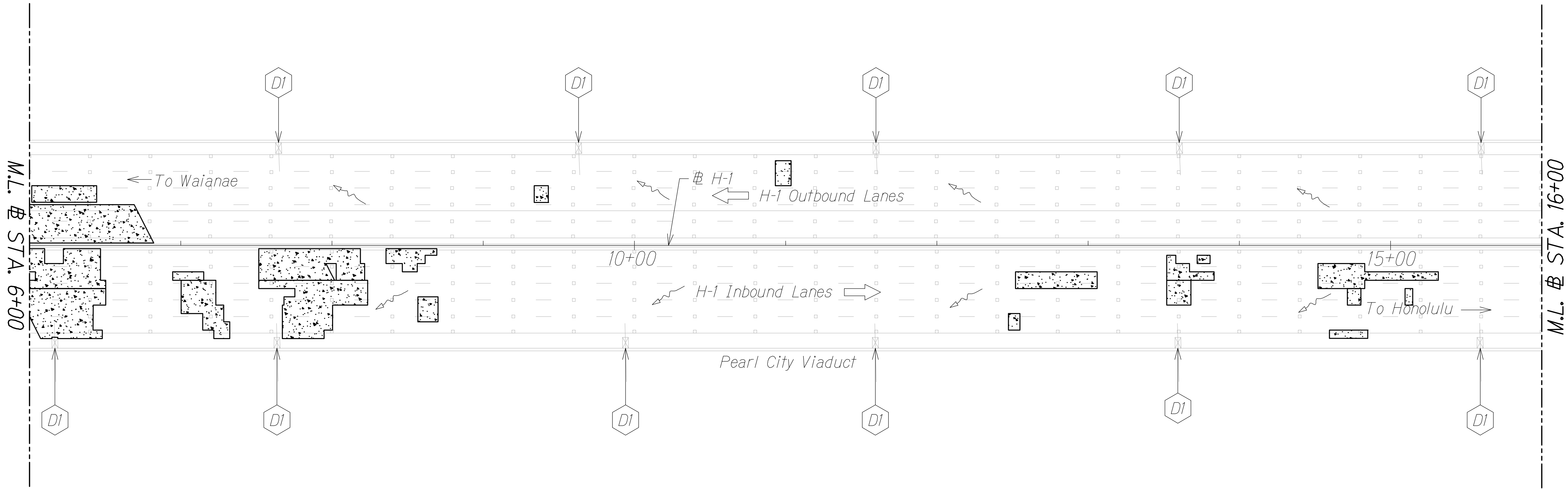
EROSION CONTROL PLAN

INTERSTATE ROUTE H-1
PEARL CITY AND WAIMALU
VIADUCT IMPROVEMENTS
FEDERAL AID PROJECT NO. BR-HI-1 (263)
Scale: As Noted Date: July 2016

SHEET No. 1 OF 8 SHEETS

FED. ROAD DIST. NO.	STATE	FED. AID PROJ. NO.	FISCAL YEAR	SHEET NO.	TOTAL SHEETS
HAWAII	HAW.	BR-HI-1 (263)	2012	8	46

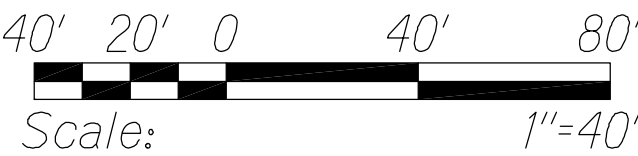
TRUE NORTH
SCALE: 1" = 40'



Legend:

- Deck Repair
- Contractor to Provide Drain Inlet Protection Per Erosion Control Detail Sheet 9
- Drainage Flow Direction Arrow

Graphic Scale



EROSION CONTROL PLAN
± STA. 6+00 TO ± STA. 16+00
Scale: 1" = 40'

LEGEND FOR
AS-BUILT POSTINGS

- Squiggly line for as-built deletion
- Double line for as-built deletion
- Roadway Text for as-built posting



THIS WORK WAS PREPARED BY
ME OR UNDER MY SUPERVISION.

4/30/18
SIGNATURE EXPIRATION DATE
OF THE LICENSE

STATE OF HAWAII
DEPARTMENT OF TRANSPORTATION
HIGHWAYS DIVISION

EROSION CONTROL PLAN

INTERSTATE ROUTE H-1
PEARL CITY AND WAIMALU
VIADUCT IMPROVEMENTS
FEDERAL AID PROJECT NO. BR-HI-1 (263)
Scale: As Noted Date: July 2016

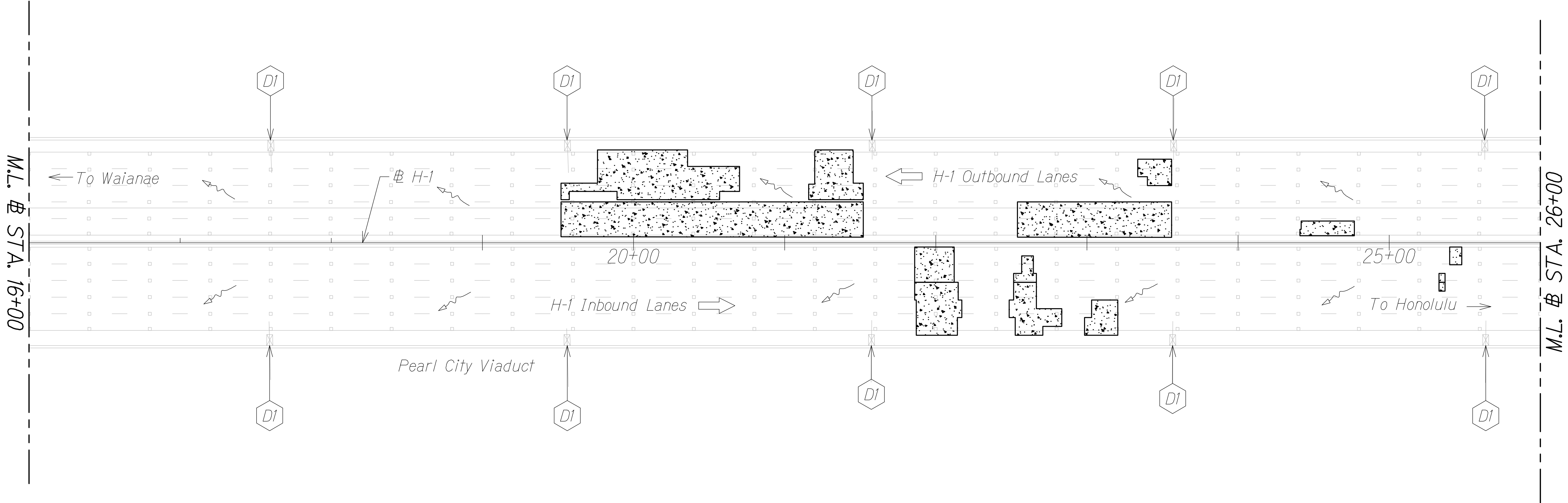
QC/QA REVIEW	100%	DATE	June 1, 2016
BY			
BY			
BY			

SURVEY PLOTTED BY	DATE
DRAWN BY	
TRACED BY	
DESIGNED BY	
QUANTITIES BY	
CHECKED BY	

No. _____

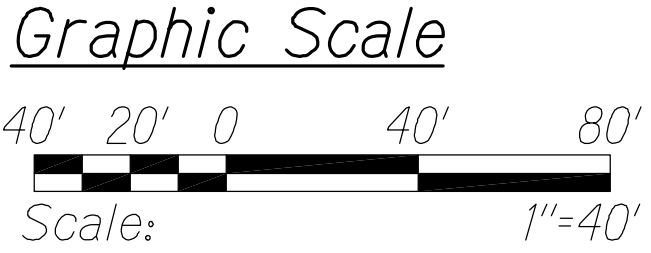
FED. ROAD DIST. NO.	STATE	FED. AID PROJ. NO.	FISCAL YEAR	SHEET NO.	TOTAL SHEETS
HAWAII	HAW.	BR-HI-1 (263)	2012	9	46

TRUE NORTH
SCALE: 1" = 40'



Legend:

- Priority 1 Deck Repair
- Contractor to Provide Drain Inlet Protection Per Erosion Control Detail Sheet 9
- Drainage Flow Direction Arrow



EROSION CONTROL PLAN
STA. 16+00 TO # STA. 26+00
Scale: 1" = 40'

LEGEND FOR AS-BUILT POSTINGS

- Squiggly line for as-built deletion
- Double line for as-built deletion
- Roadway Text for as-built posting

STATE OF HAWAII
DEPARTMENT OF TRANSPORTATION
HIGHWAYS DIVISION

EROSION CONTROL PLAN

INTERSTATE ROUTE H-1
PEARL CITY AND WAIMALU
VIADUCT IMPROVEMENTS
FEDERAL AID PROJECT NO. BR-HI-1 (263)
Scale: As Noted Date: July 2016

QC/QA REVIEW	100%	DATE	June 1, 2016
<input type="checkbox"/> BY			
<input type="checkbox"/> BY			
<input type="checkbox"/> BY			
<input type="checkbox"/> BY			

SURVEY PLOTTED BY	DATE
DRAWN BY	
TRACED BY	
DESIGNED BY	
QUANTITIES BY	
CHECKED BY	

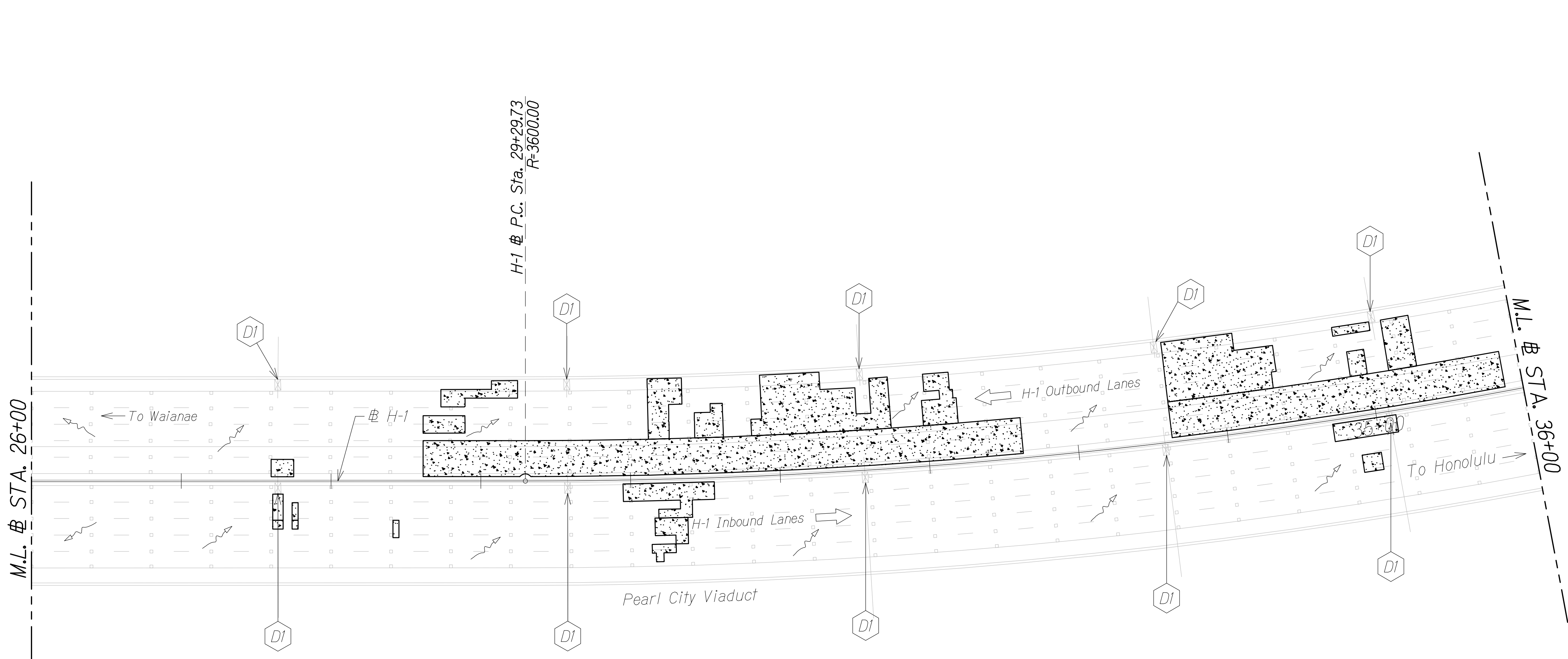
No. _____



THIS WORK WAS PREPARED BY ME OR UNDER MY SUPERVISION.

4/30/18
SIGNATURE EXPIRATION DATE OF THE LICENSE

FED. ROAD DIST. NO.	STATE	FED. AID PROJ. NO.	FISCAL YEAR	SHEET NO.	TOTAL SHEETS
HAWAII	HAW.	BR-HI-1 (263)	2012	10	46

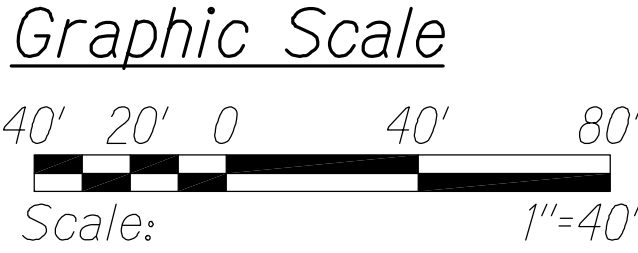


TRUE NORTH
SCALE: 1" = 40'

QC/QA REVIEW	100%	DATE	June 1, 2016
BY			
BY			
BY			
BY			

SURVEY PLOTTED BY	DATE
DRAWN BY	
DESIGNED BY	
QUANTITIES BY	
CHECKED BY	

- Legend:**
- Deck Repair
 - Contractor to Provide Drain Inlet Protection Per Erosion Control Detail Sheet 9
 - Drainage Flow Direction Arrow



EROSION CONTROL PLAN
STA. 26+00 TO # STA. 36+00
Scale: 1" = 40'

LEGEND FOR AS-BUILT POSTINGS

- Squiggly line for as-built deletion
- Double line for as-built deletion
- Roadway Text for as-built posting

THIS WORK WAS PREPARED BY ME OR UNDER MY SUPERVISION.

4/30/18
SIGNATURE EXPIRATION DATE OF THE LICENSE

STATE OF HAWAII
DEPARTMENT OF TRANSPORTATION
HIGHWAYS DIVISION

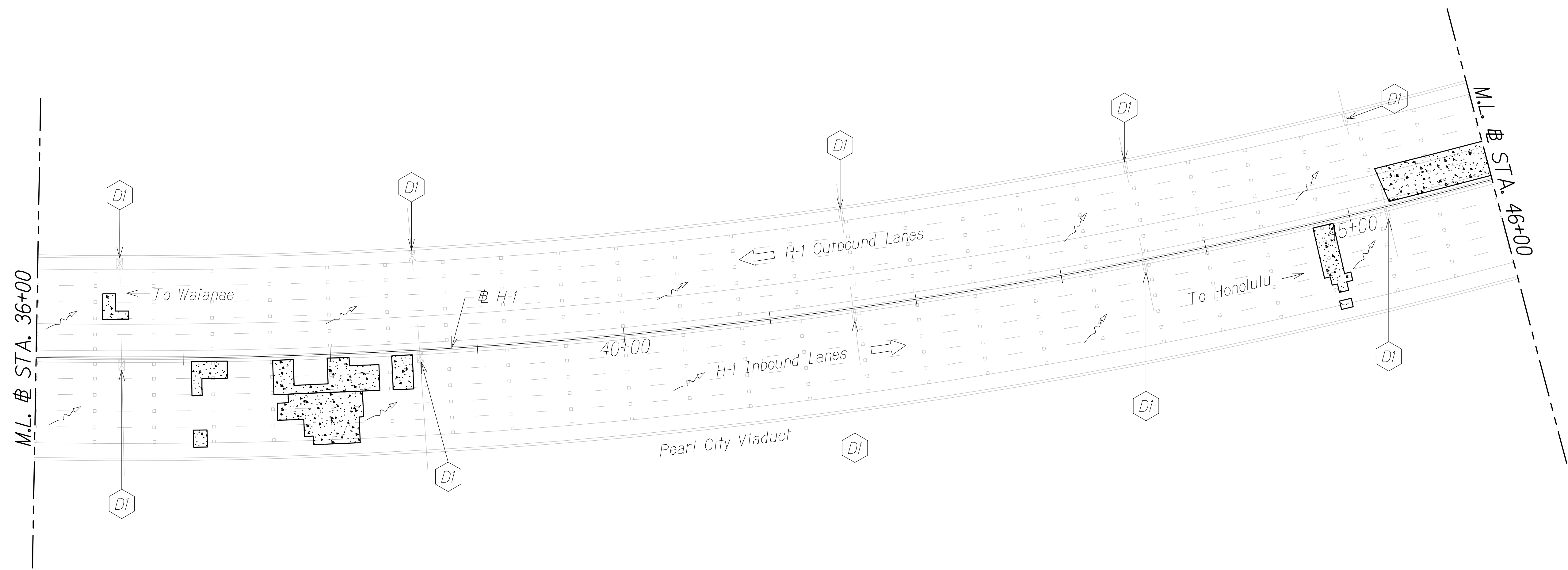
EROSION CONTROL PLAN

INTERSTATE ROUTE H-1
PEARL CITY AND WAIMALU
VIADUCT IMPROVEMENTS
FEDERAL AID PROJECT NO. BR-HI-1 (263)
Scale: As Noted Date: July 2016

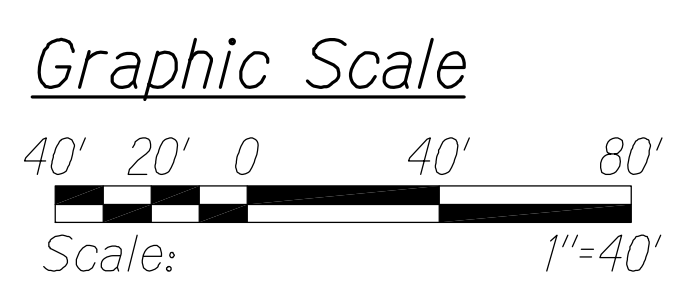
SHEET No. 4 OF 8 SHEETS

FED. ROAD DIST. NO.	STATE	FED. AID PROJ. NO.	FISCAL YEAR	SHEET NO.	TOTAL SHEETS
HAWAII	HAW.	BR-HI-1 (263)	2012	11	46

TRUE NORTH
SCALE: 1" = 40'



- Legend:
- Priority 1 Deck Repair
 - Contractor to Provide Drain Inlet Protection Per Erosion Control Detail Sheet 9
 - Drainage Flow Direction Arrow



EROSION CONTROL PLAN
± STA. 36+00 TO ± STA. 46+00
Scale: 1" = 40'

LEGEND FOR AS-BUILT POSTINGS

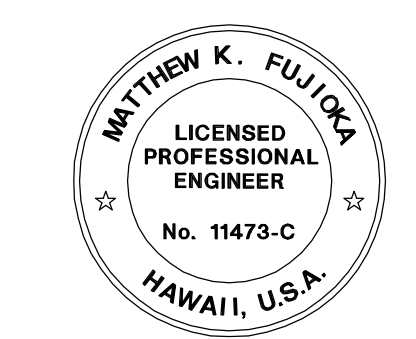
- Squiggly line for as-built deletion
- Double line for as-built deletion
- Roadway Text for as-built posting

STATE OF HAWAII
DEPARTMENT OF TRANSPORTATION
HIGHWAYS DIVISION

EROSION CONTROL PLAN

INTERSTATE ROUTE H-1
PEARL CITY AND WAIMALU
VIADUCT IMPROVEMENTS
FEDERAL AID PROJECT NO. BR-HI-1 (263)
Scale: As Noted Date: July 2016

SHEET No. 5 OF 8 SHEETS



THIS WORK WAS PREPARED BY ME OR UNDER MY SUPERVISION.

4/30/18
SIGNATURE EXPIRATION DATE OF THE LICENSE

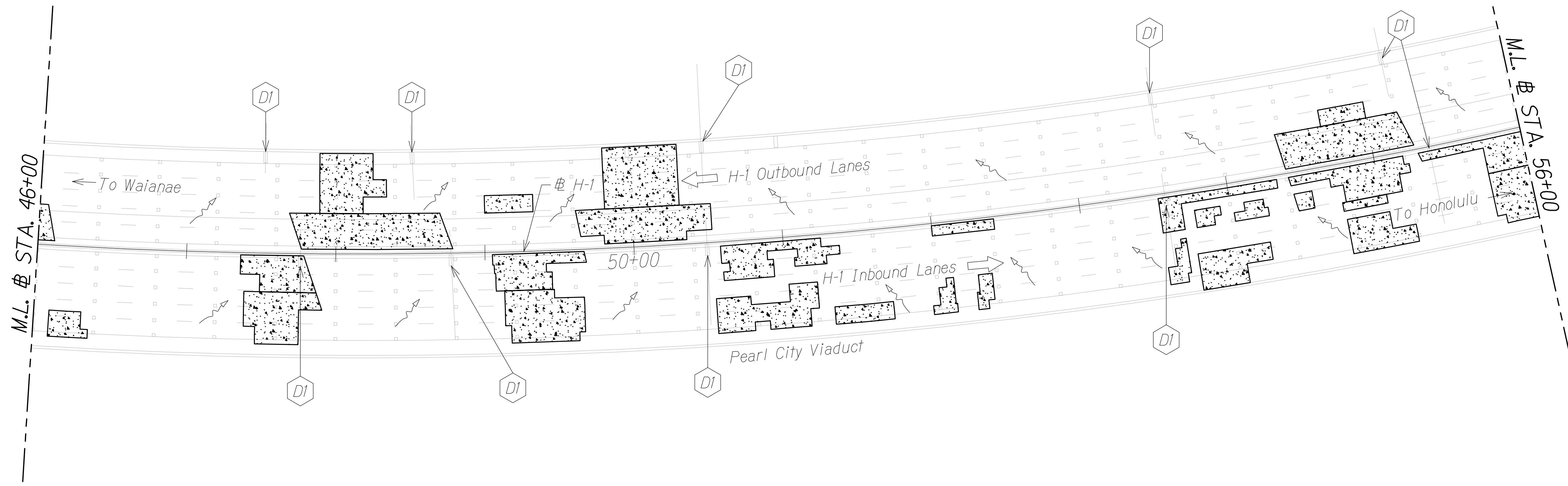
QC/QA REVIEW	100%	DATE	June 1, 2016
BY			
BY			
BY			

SURVEY PLOTTED BY	DATE
DRAWN BY	
TRACED BY	
DESIGNED BY	
QUANTITIES BY	
CHECKED BY	

No. _____

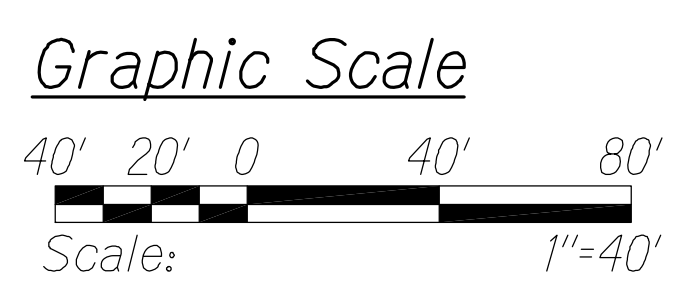
FED. ROAD DIST. NO.	STATE	FED. AID PROJ. NO.	FISCAL YEAR	SHEET NO.	TOTAL SHEETS
HAWAII	HAW.	BR-HI-1 (263)	2012	12	46

TRUE NORTH
SCALE: 1" = 40'



Legend:

- Deck Repair
- Contractor to Provide Drain Inlet Protection Per Erosion Control Detail Sheet 9
- Drainage Flow Direction Arrow



EROSION CONTROL PLAN
STA. 46+00 TO # STA. 56+00
Scale: 1" = 40'

LEGEND FOR AS-BUILT POSTINGS

- Squiggly line for as-built deletion
- Double line for as-built deletion
- Roadway Text for as-built posting

STATE OF HAWAII
DEPARTMENT OF TRANSPORTATION
HIGHWAYS DIVISION

EROSION CONTROL PLAN

INTERSTATE ROUTE H-1
PEARL CITY AND WAIMALU
VIADUCT IMPROVEMENTS
FEDERAL AID PROJECT NO. BR-HI-1 (263)
Scale: As Noted Date: July 2016

QC/QA REVIEW	100%	DATE	June 1, 2016
BY			
BY			
BY			

SURVEY PLOTTED BY	DATE
DRAWN BY	
DESIGNED BY	
QUANTITIES BY	
CHECKED BY	

ORIGINAL PLAN	No.
NOTE BOOK	

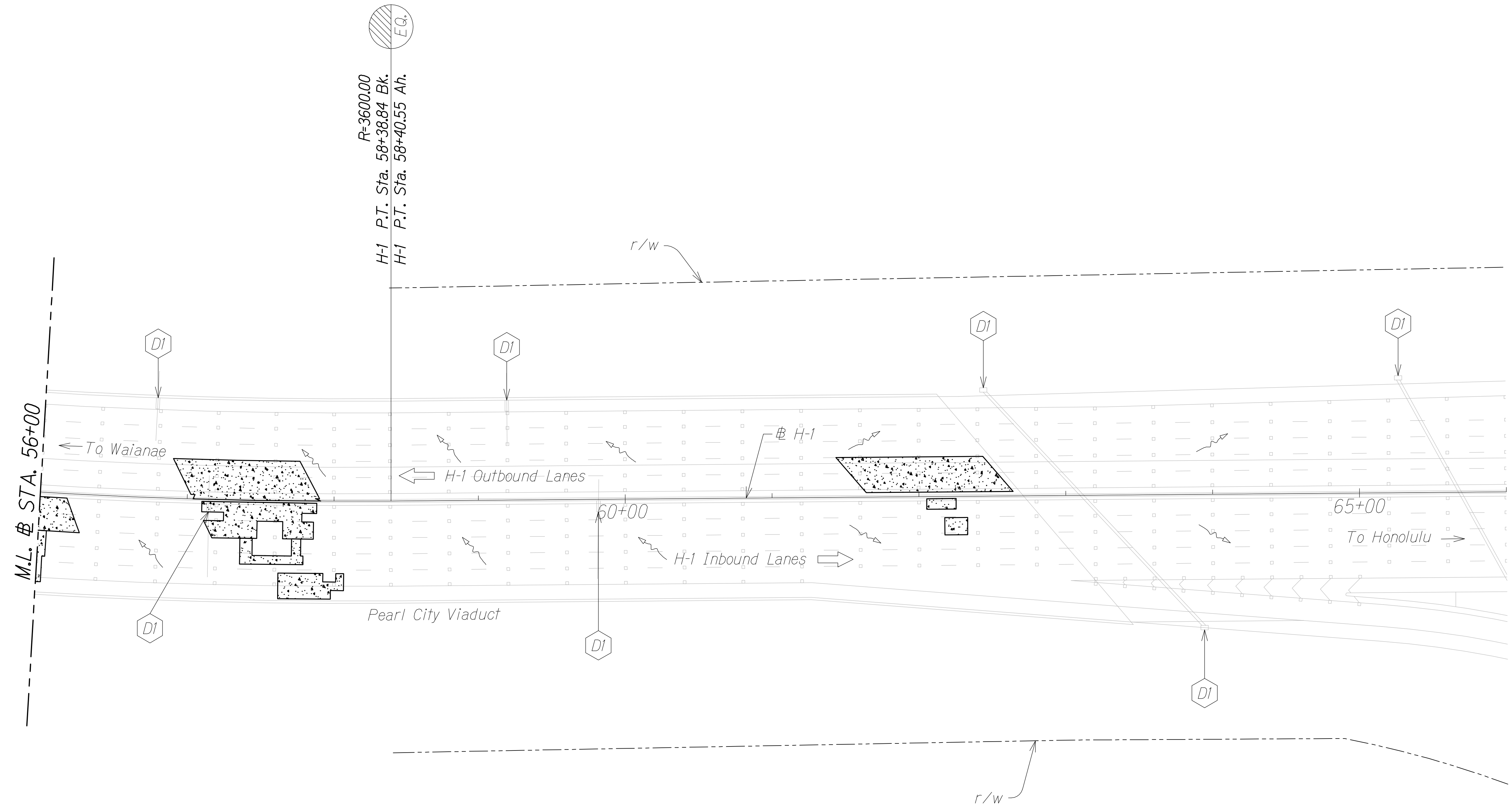


THIS WORK WAS PREPARED BY ME OR UNDER MY SUPERVISION.

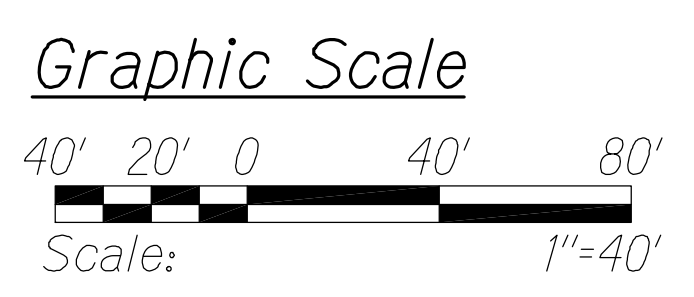
4/30/18
SIGNATURE EXPIRATION DATE OF THE LICENSE

FED. ROAD DIST. NO.	STATE	FED. AID PROJ. NO.	FISCAL YEAR	SHEET NO.	TOTAL SHEETS
HAWAII	HAW.	BR-HI-1 (263)	2012	13	46

TRUE NORTH
SCALE: 1" = 40'



- Legend:**
- Deck Repair
 - Contractor to Provide Drain Inlet Protection Per Erosion Control Detail Sheet 9
 - Drainage Flow Direction Arrow



EROSION CONTROL PLAN
STA. 56+00 TO # STA. 66+00
Scale: 1" = 40'

- LEGEND FOR AS-BUILT POSTINGS**
- Squiggly line for as-built deletion
 - Double line for as-built deletion
 - Roadway Text for as-built posting

STATE OF HAWAII
DEPARTMENT OF TRANSPORTATION
HIGHWAYS DIVISION

EROSION CONTROL PLAN

INTERSTATE ROUTE H-1
PEARL CITY AND WAIMALU
VIADUCT IMPROVEMENTS
FEDERAL AID PROJECT NO. BR-HI-1 (263)
Scale: As Noted Date: July 2016

QC/QA REVIEW	100%	DATE
BY		
BY		
BY		

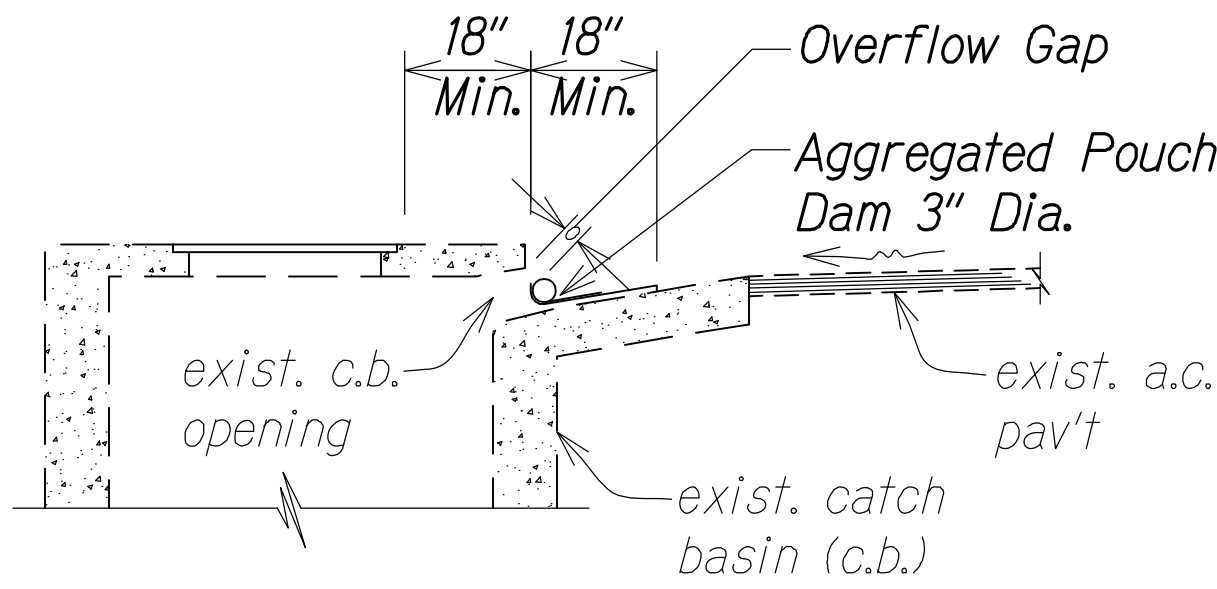
ORIGINAL PLAN	DATE
DESIGNED BY	
TRACED BY	
NOTED BY	
CHECKED BY	



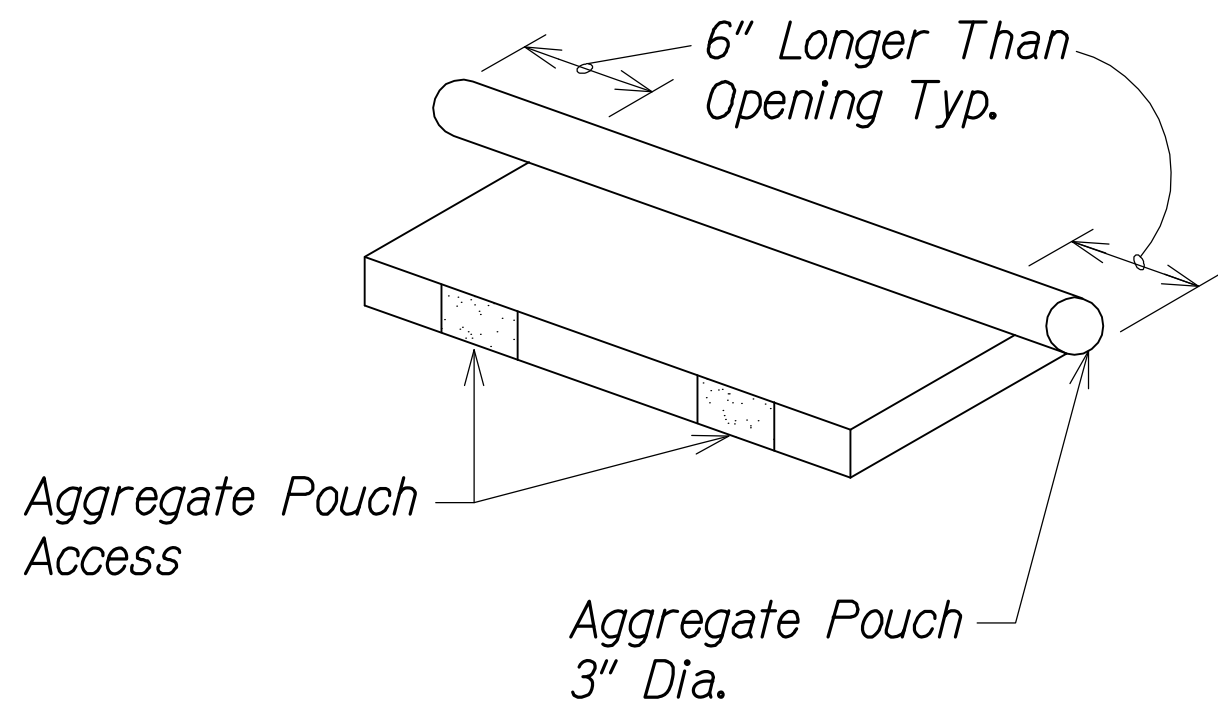
THIS WORK WAS PREPARED BY ME OR UNDER MY SUPERVISION.

4/30/18
SIGNATURE EXPIRATION DATE OF THE LICENSE

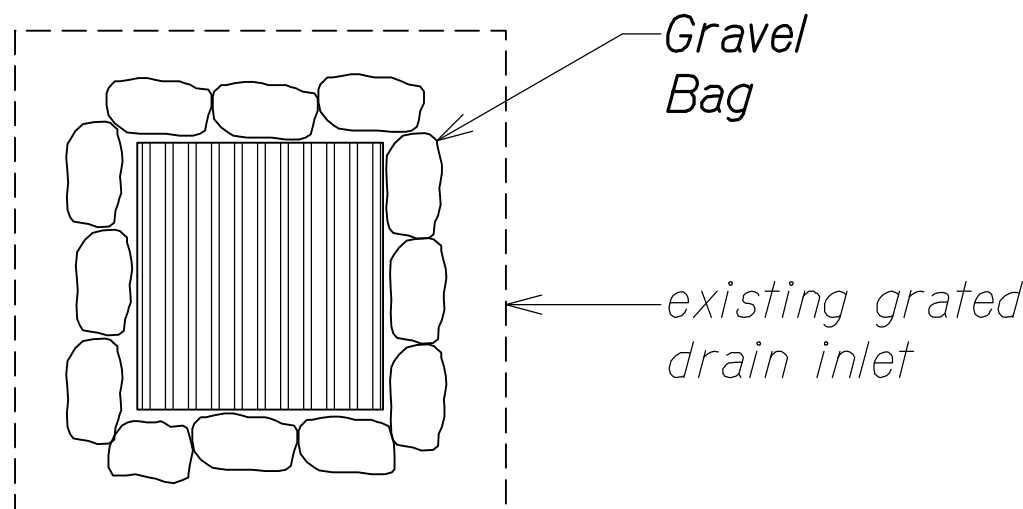
FED. ROAD DIST. NO.	STATE	FED. AID PROJ. NO.	FISCAL YEAR	SHEET NO.	TOTAL SHEETS
HAWAII	HAW.	BR-HI-1 (263)	2012	14	46



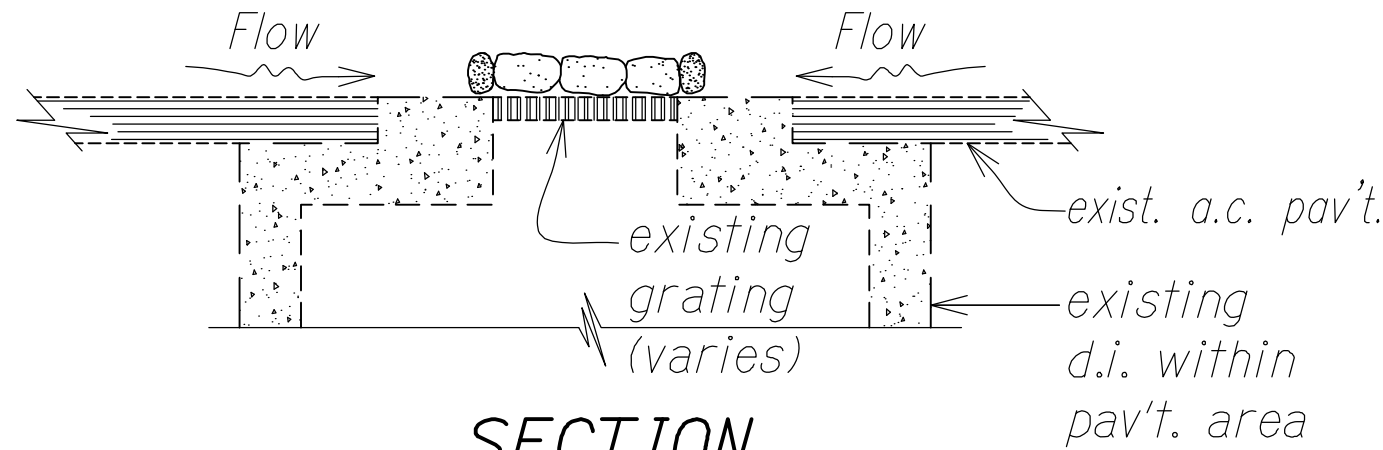
ELEVATION
AGGREGATE POUCH
Not to Scale



AGGREGATE POUCH AT CATCH BASIN OPENING OR APPROVED EQUAL
Not to Scale

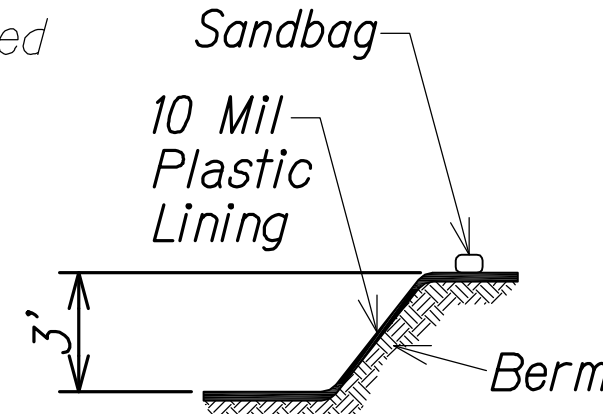


PLAN VIEW



SECTION

GRAVEL BAGS AT GRATED DRAIN INLET OR APPROVED EQUAL
Not to Scale

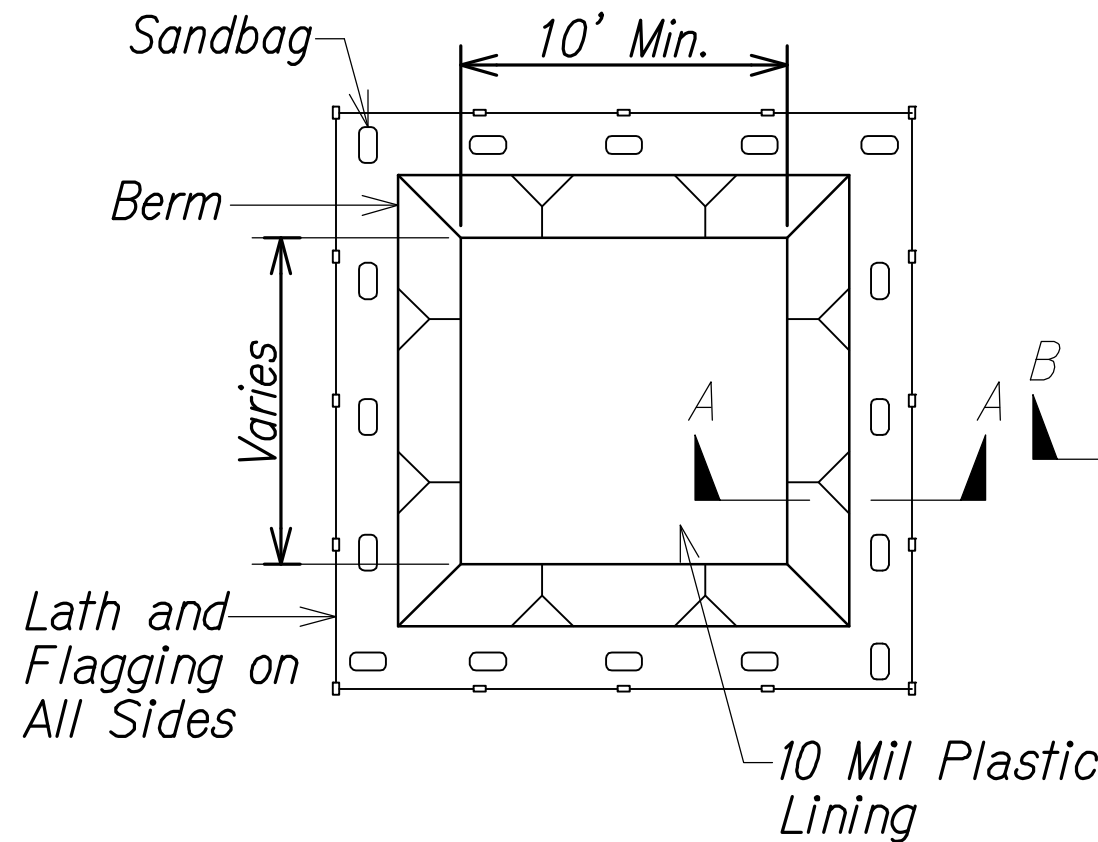


SECTION A-A

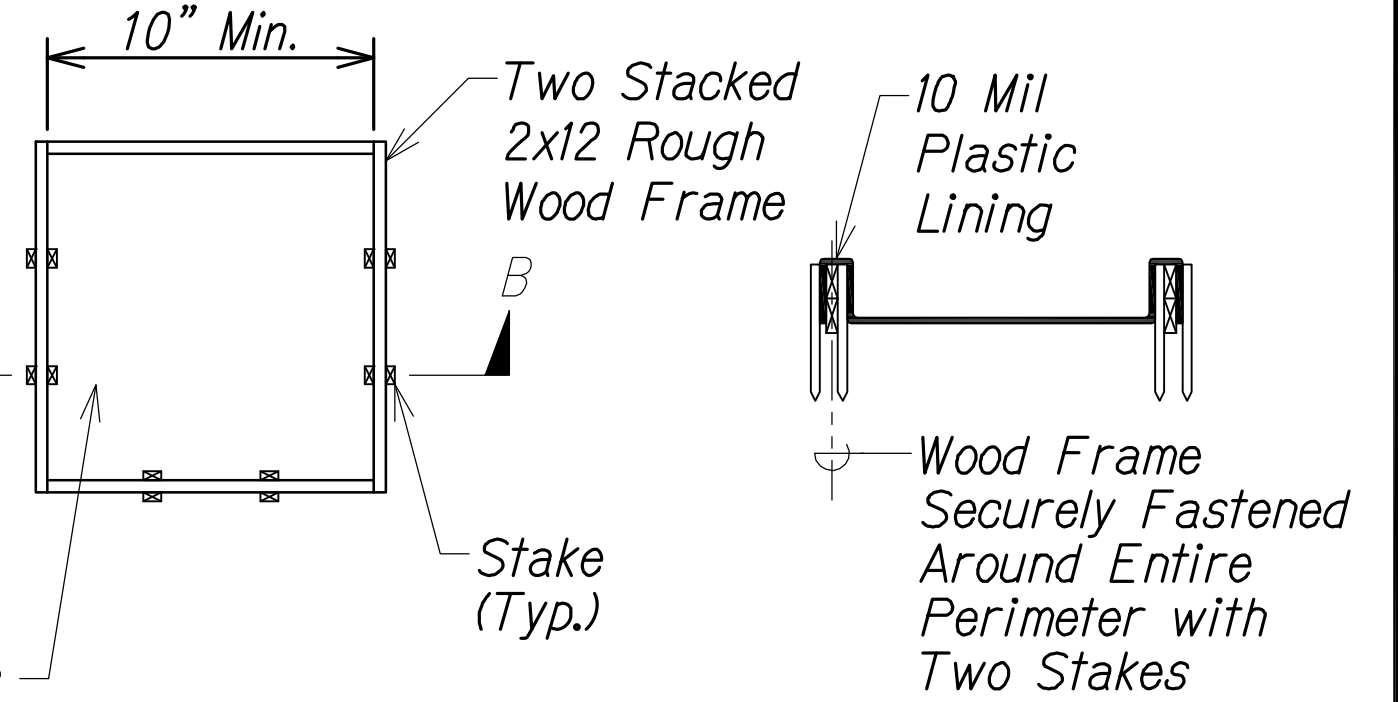
Notes:

1. Actual layout determined in field.
2. The concrete washout sign shall be installed within 30 feet of the temporary concrete washout facility.

CONCRETE VEHICLE WASH AREA (BELOW GRADE)



PLAN



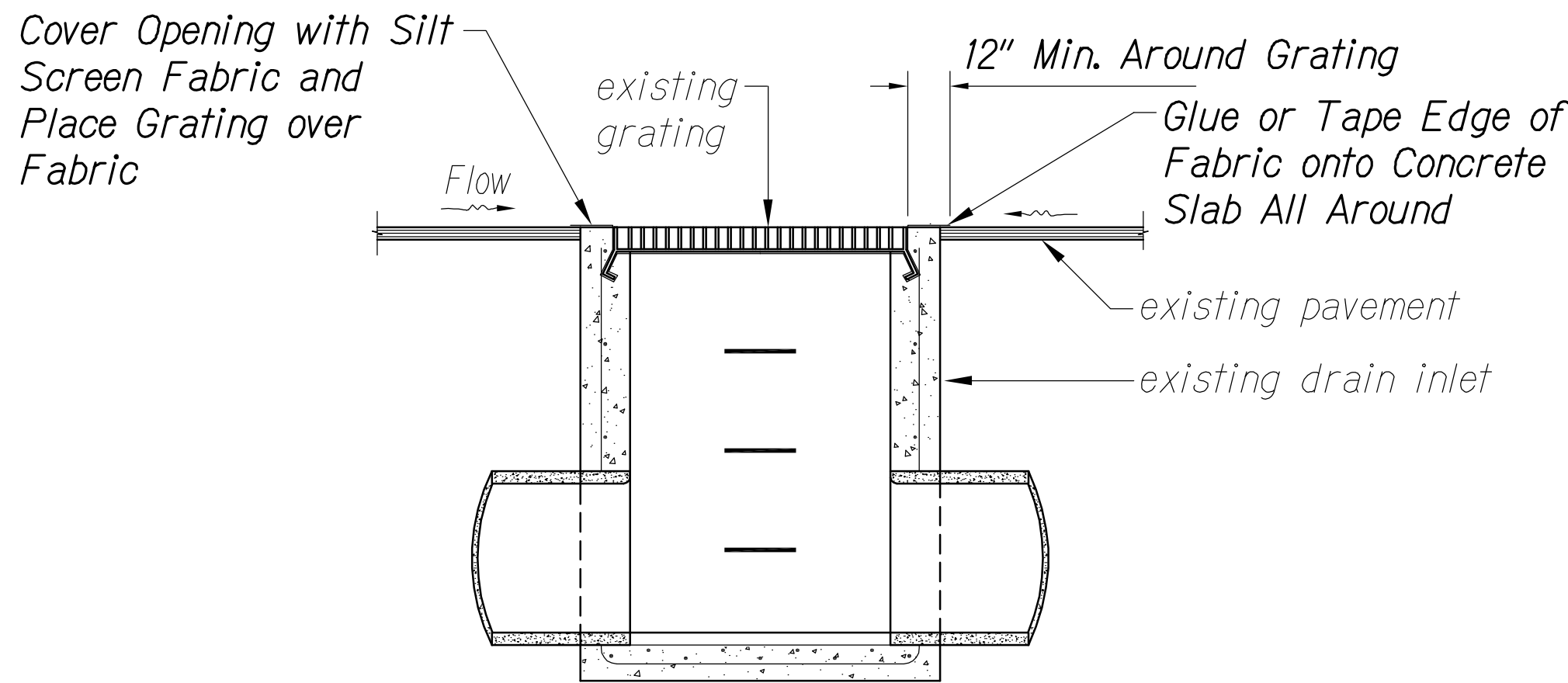
PLAN

Notes:

1. Actual layout determined in field.
2. The concrete washout sign shall be installed within 30 feet of the temporary concrete washout facility.

CONCRETE VEHICLE WASH AREA (ABOVE GRADE)

WASHDOWN BASIN DETAIL
Not to Scale



ELEVATION

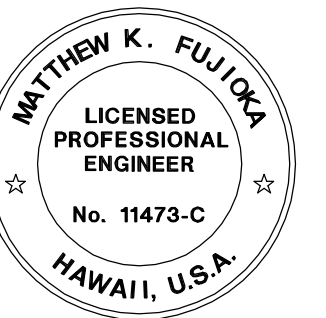
FABRIC AT GRATED DRAIN INLET OR APPROVED EQUAL
Not to Scale

Note:

1. BMP to be used on drain inlets that will be in vehicular travel way.

LEGEND FOR AS-BUILT POSTINGS

- ~~~~~ Squiggly line for as-built deletion
=+00.00= Double line for as-built deletion
Roadway Text for as-built posting



THIS WORK WAS PREPARED BY ME OR UNDER MY SUPERVISION.

SIGNATURE: *Matthew K. Fujioka* 4/30/18
EXPIRATION DATE OF THE LICENSE

STATE OF HAWAII
DEPARTMENT OF TRANSPORTATION
HIGHWAYS DIVISION

EROSION CONTROL DETAILS

INTERSTATE ROUTE H-1
PEARL CITY AND WAIMALU
VIADUCT IMPROVEMENTS
FEDERAL AID PROJECT NO. BR-HI-1 (263)
Scale: As Noted Date: July 2016