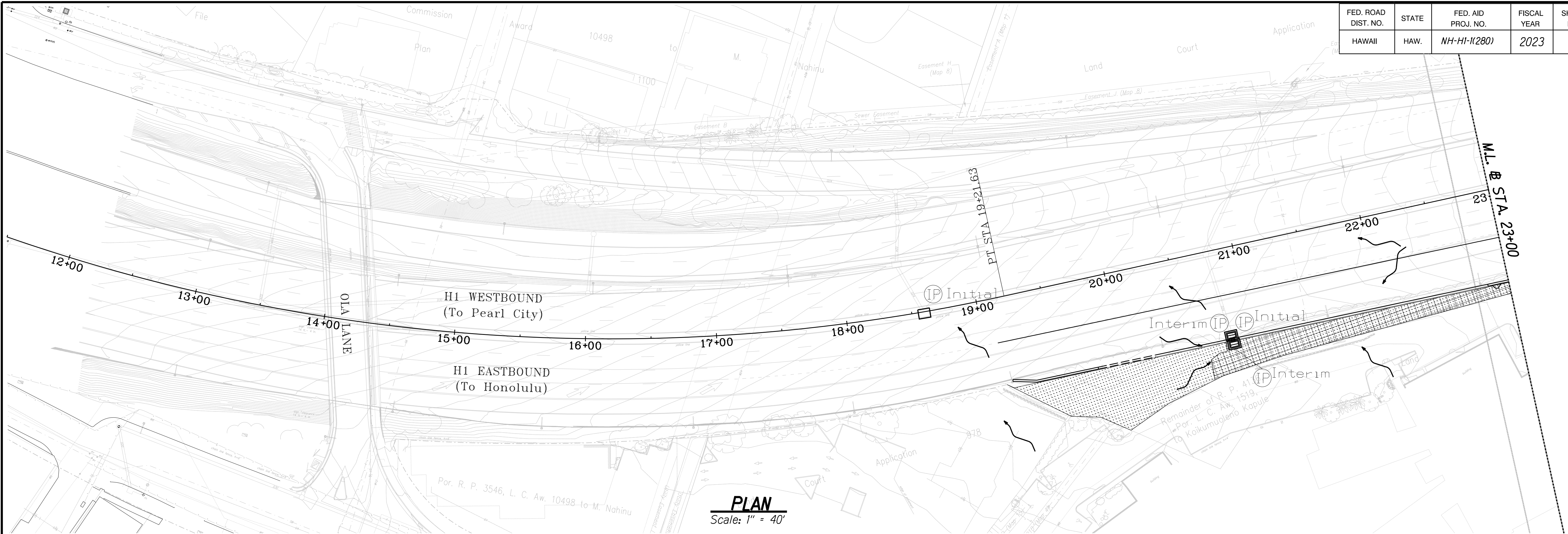


FED. ROAD DIST. NO.	STATE	FED. AID PROJ. NO.	FISCAL YEAR	SHEET NO.	TOTAL SHEETS
HAWAII	HAW.	NH-HI-1(280)	2023	32	466

TRUE NORTH  
SCALE: 1 in. = 40 ft.



### NOTES

- Sediment and Erosion Control BMP measures shown in the Contract Documents are minimum BMPs requirements and do not constitute an acceptable and/or complete Sediment Control Plan. The Contractor shall incorporate additional BMPs based upon their means and methods considering site conditions and construction sequence in accordance with the Contract Documents including applicable permit document requirements. Cost shall be included in Pay Item 209.0100, Installation, Maintenance, Monitoring, and Removal of BMP.
- Inlet protection on existing inlets shall be placed during the initial phase of the project. Inlet protection on proposed inlets shall be placed during the interim phase of the project as proposed inlets are being installed.
- Provide Stabilized Construction Entrance at locations provided by the CO to prevent tracking of soils from the construction site.
- Reference State of Hawaii Department of Transportation Construction Best Management Practices Field Manual, October 2021, for Erosion Control Guidelines.
- Temporary and permanent seeding shall be in accordance with Specification Sections 209 and 641, respectively.

Total Limits of Disturbance = 0.52 Acres

### LEGEND

- Flow Direction
- IP — Catch Basin Inlet Protection (Guideline SC-1)
- IP □ Grate Inlet Protection (Guideline SC-1)
- SP - - - Perimeter Control (Silt Fence) (Guideline SC-7)
- Stabilized Construction Entrance (Guideline SC-11)
- Hydroseeding and Mulching (Guideline EC-13 and EC-14)
- Geotextiles and Mats (Guideline EC-11)

ORIGINAL PLAN	SURVEY PLOTTED BY	DATE
NOTE BOOK	DRAWN BY	
No.	TRACED BY	
	DESIGNED BY	
	QUANTITIES BY	
	CHECKED BY	

DRAWING NAME: 419596\_ErosionControl40scale-01.dgn

PLOT TIME: 27-FEB-2023 10:42



THIS WORK WAS PREPARED BY ME OR UNDER MY SUPERVISION AND CONSTRUCTION OF THIS PROJECT WILL BE UNDER MY OBSERVATION. "OBSERVATION OF CONSTRUCTION" SHALL BE AS DEFINED IN CHAPTER 115, RULES OF THE BOARD OF PROFESSIONAL ENGINEERS, ARCHITECTS AND SURVEYORS, STATE OF HAWAII (SUBCHAPTER 1, SECTION 16-115-2, DEFINITIONS).

JACOBUS ENGINEERING GROUP INC.  
LICENSE EXPIRES 04-30-24

STATE OF HAWAII  
DEPARTMENT OF TRANSPORTATION  
HIGHWAYS DIVISION

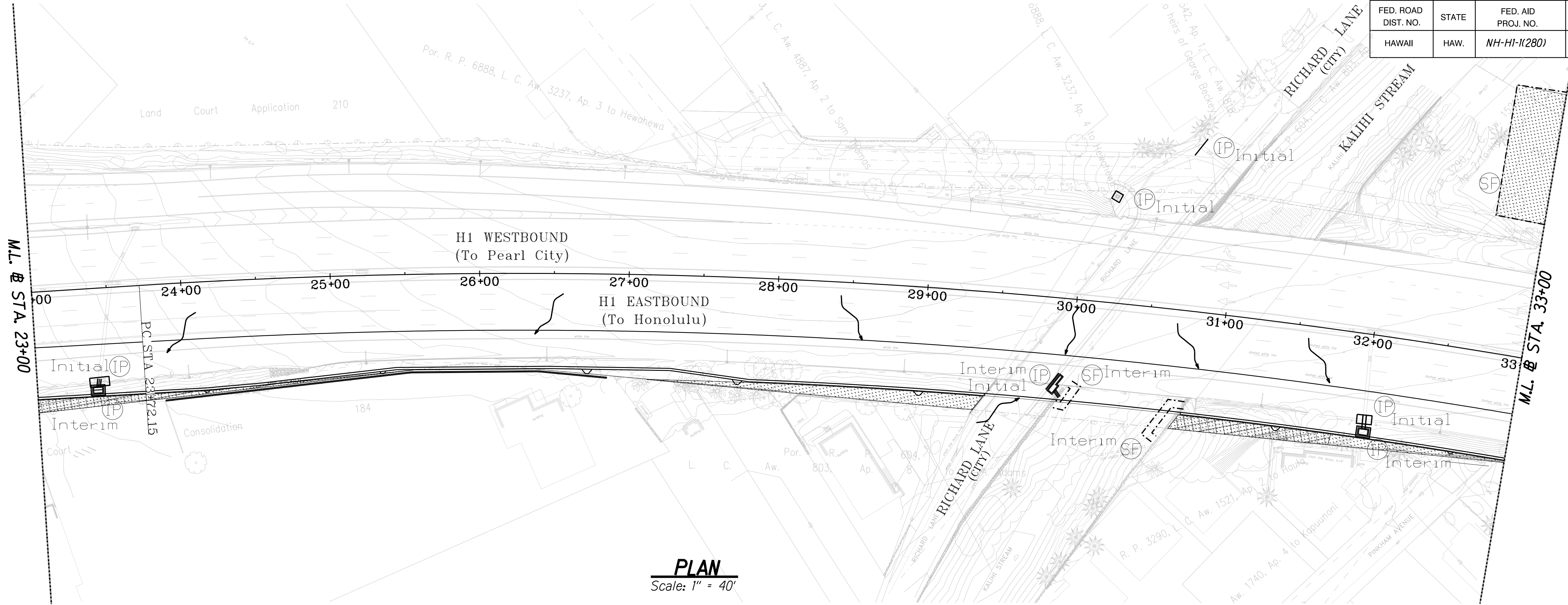
**SEDIMENT AND EROSION  
CONTROL PLAN**

**INTERSTATE ROUTE HI (EB) IMPROVEMENTS  
Ola Lane Overpass to Likeline Hwy Off-Ramp  
Project No. NH-HI-1(280)**

Scale: 1" = 40' Date: Dec 2022

SHEET No. EC01.01 OF 3 SHEETS

FED. ROAD DIST. NO.	STATE	FED. AID PROJ. NO.	FISCAL YEAR	SHEET NO.	TOTAL SHEETS
HAWAII	HAW.	NH-HI-1(280)	2023	33	466



## NOTES

- Sediment and Erosion Control BMP measures shown in the Contract Documents are minimum BMPs requirements and do not constitute an acceptable and/or complete Sediment Control Plan. The Contractor shall incorporate additional BMPs based upon their means and methods considering site conditions and construction sequence in accordance with the Contract Documents including applicable permit document requirements. Cost shall be included in Pay Item 209.0100, Installation, Maintenance, Monitoring, and Removal of BMP.
- Inlet protection on existing inlets shall be placed during the initial phase of the project. Inlet protection on proposed inlets shall be placed during the interim phase of the project as proposed inlets are being installed.
- Provide Stabilized Construction Entrance at locations provided by the CO to prevent tracking of soils from the construction site.
- Reference State of Hawaii Department of Transportation Construction Best Management Practices Field Manual, October 2021, for Erosion Control Guidelines.
- Temporary and permanent seeding shall be in accordance with Specification Sections 209 and 641, respectively.
- Silt fence placed within the overbanks of the Kalihi Stream shall be placed so that there are two rows of fence for each protected area. The two rows of fence shall be placed 5 feet apart.
- Efforts shall be made to prevent sediment and debris from entering the Kalihi Stream. Debris or fallen materials from the proposed bridge or wall construction shall not enter the stream. If work within the stream is required, provide clear water diversions, cofferdams, floating silt fence, and/or other sediment and water control measures.

Total Limits of Disturbance = 0.52 Acres

## LEGEND

- Flow Direction
- IP — Catch Basin Inlet Protection (Guideline SC-1)
- IP □ Grate Inlet Protection (Guideline SC-1)
- SF - - - Perimeter Control (Silt Fence) (Guideline SC-7)
- Stabilized Construction Entrance (Guideline SC-11)
- Hydroseeding and Mulching (Guideline EC-13 and EC-14)
- Geotextiles and Mats (Guideline EC-11)



THIS WORK WAS PREPARED BY ME OR UNDER MY SUPERVISION AND CONSTRUCTION OF THIS PROJECT WILL BE UNDER MY OBSERVATION. "OBSERVATION OF CONSTRUCTION" SHALL BE AS DEFINED IN CHAPTER 115, RULES OF THE BOARD OF PROFESSIONAL ENGINEERS, ARCHITECTS AND SURVEYORS, STATE OF HAWAII, SUBCHAPTER 1, SECTION 16-115-2, DEFINITIONS.

JACOB ENGINEERING GROUP INC.  
LICENSE EXPIRES 04-30-24

STATE OF HAWAII  
DEPARTMENT OF TRANSPORTATION  
HIGHWAYS DIVISION

**SEDIMENT AND EROSION  
CONTROL PLAN**

**INTERSTATE ROUTE HI (EB) IMPROVEMENTS  
Ola Lane Overpass to Likelike Hwy Off-Ramp  
Project No. NH-HI-1(280)**

Scale: 1" = 40' Date: Dec 2022

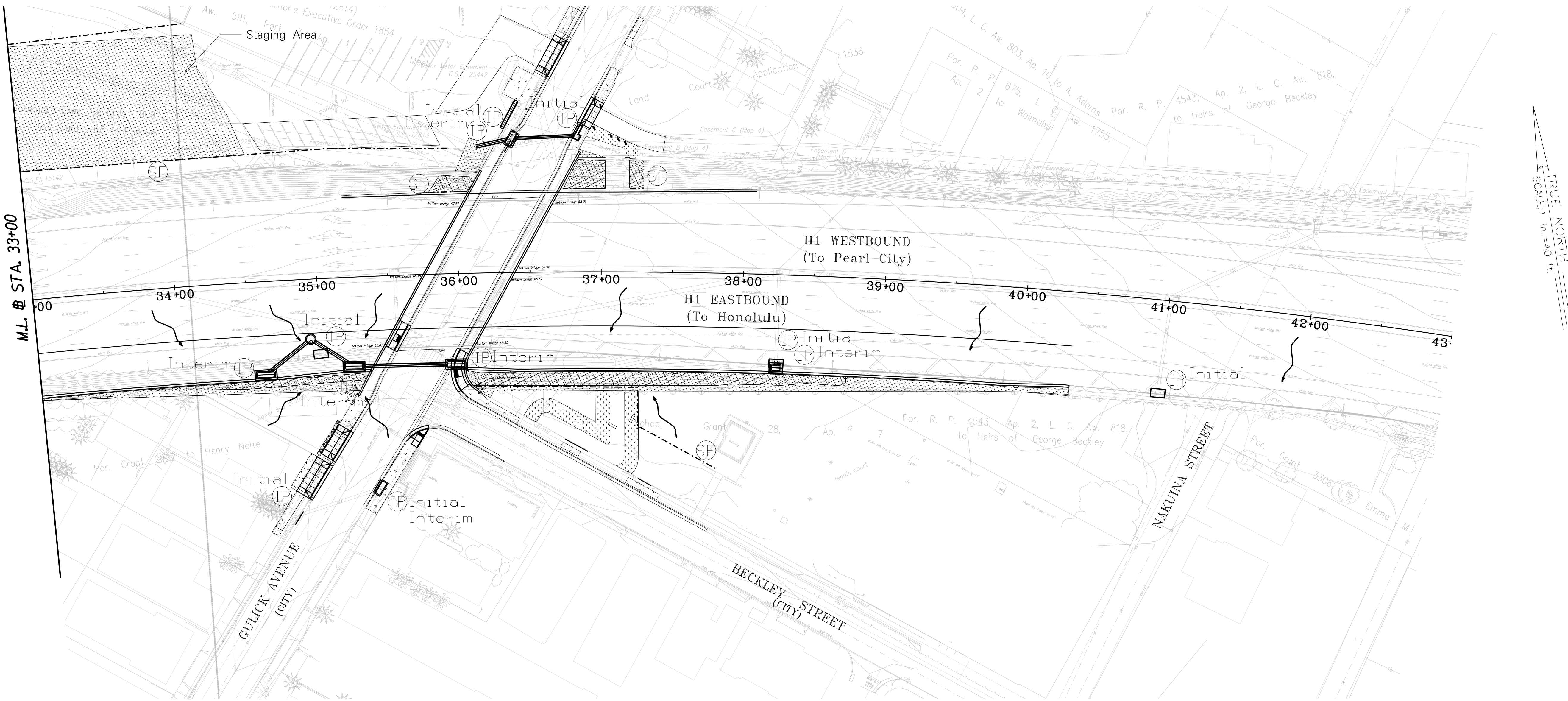
SHEET No. EC01.02 OF 3 SHEETS

ORIGINAL PLAN	SURVEY PLOTTED BY	DATE
NOTE BOOK	DRAWN BY	
No.	TRACED BY	
	DESIGNED BY	
	QUANTITIES BY	
	CHECKED BY	

DRAWING NAME: 419596\_ErosionControl40Scale-02.dgn

PLOT TIME: 27-FEB-2023 10:42

FED. ROAD DIST. NO.	STATE	FED. AID PROJ. NO.	FISCAL YEAR	SHEET NO.	TOTAL SHEETS
HAWAII	HAW.	NH-HI-1(280)	2023	34	466



## NOTES

- Sediment and Erosion Control BMP measures shown in the Contract Documents are minimum BMPs requirements and do not constitute an acceptable and/or complete Sediment Control Plan. The Contractor shall incorporate additional BMPs based upon their means and methods considering site conditions and construction sequence in accordance with the Contract Documents including applicable permit document requirements. Cost shall be included in Pay Item 209.0100, Installation, Maintenance, Monitoring, and Removal of BMP.
- Inlet protection on existing inlets shall be placed during the initial phase of the project. Inlet protection on proposed inlets shall be placed during the interim phase of the project as proposed inlets are being installed.
- Provide Stabilized Construction Entrance at locations provided by the CO to prevent tracking of soils from the construction site.
- Reference State of Hawaii Department of Transportation Construction Best Management Practices Field Manual, October 2021, for Erosion Control Guidelines.
- Temporary and permanent seeding shall be in accordance with Specification Sections 209 and 641, respectively.

Total Limits of Disturbance = 0.52 Acres

## PLAN

Scale: 1" = 40'

## LEGEND

- Flow Direction
- IP — Catch Basin Inlet Protection (Guideline SC-1)
- IP □ Grate Inlet Protection (Guideline SC-1)
- SF - - - Perimeter Control (Silt Fence) (Guideline SC-7)
- Stabilized Construction Entrance (Guideline SC-11)
- Hydroseeding and Mulching (Guideline EC-13 and EC-14)
- Geotextiles and Mats (Guideline EC-11)



THIS WORK WAS PREPARED BY ME OR UNDER MY SUPERVISION AND CONSTRUCTION OF THIS PROJECT WILL BE UNDER MY OBSERVATION. ("OBSERVATION OF CONSTRUCTION" SHALL BE AS DEFINED IN CHAPTER 115, RULES OF THE BOARD OF PROFESSIONAL ENGINEERS, ARCHITECTS AND SURVEYORS, STATE OF HAWAII, SUBCHAPTER 1, SECTION 16-115-2, DEFINITIONS)

JACOB ENGINEERING GROUP INC.  
LICENSE EXPIRES 04-30-24

STATE OF HAWAII  
DEPARTMENT OF TRANSPORTATION  
HIGHWAYS DIVISION

**SEDIMENT AND EROSION  
CONTROL PLAN**

**INTERSTATE ROUTE HI (EB) IMPROVEMENTS  
Ola Lane Overpass to Likelike Hwy Off-Ramp  
Project No. NH-HI-1(280)**

Scale: 1" = 40' Date: Dec 2022

SHEET No. EC01.03 OF 3 SHEETS

ORIGINAL PLAN	SURVEY PLOTTED BY	DATE
NOTE BOOK	DRAWN BY	
No.	CHECKED BY	
	QUANTITIES BY	
	CHECKED BY	

DRAWING NAME: 419596\_ErosionControl40scale-03.dgn

PLOT TIME: 27-FEB-2023 10:42