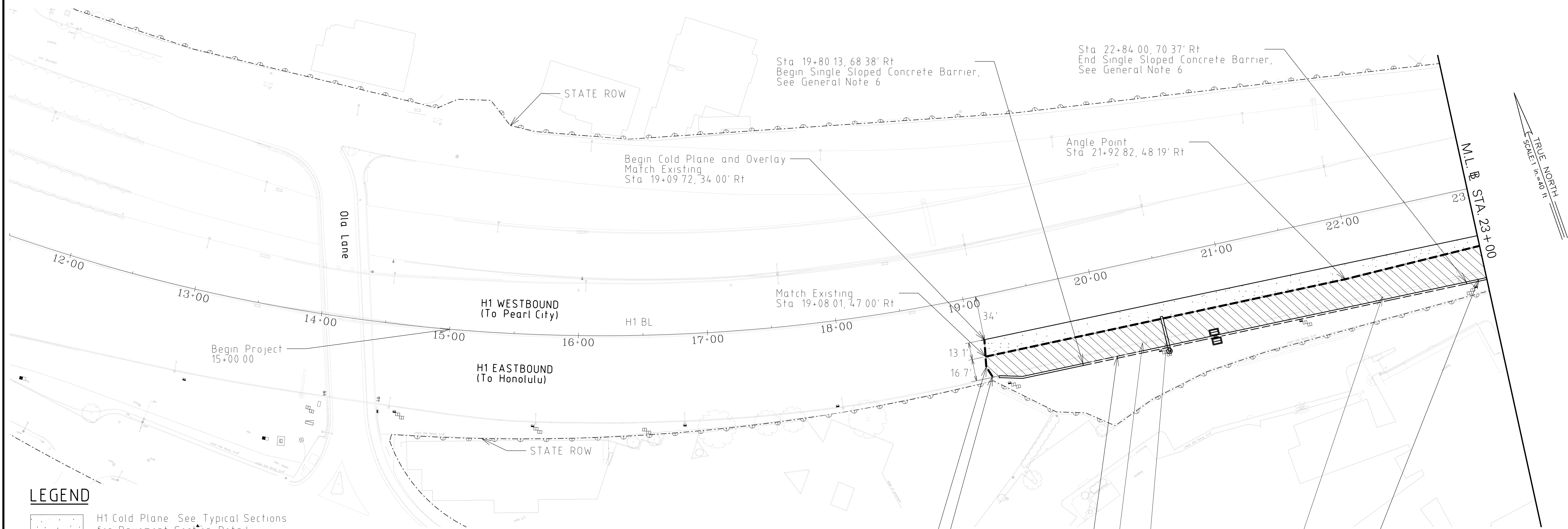


| FED. ROAD DIST. NO. | STATE | PROJ. NO.  | FISCAL YEAR | SHEET NO. | TOTAL SHEETS |
|---------------------|-------|------------|-------------|-----------|--------------|
| HAWAII              | HAW.  | H1H1-01-09 | 2022        |           | XX           |



**LEGEND**

- H1 Cold Plane See Typical Sections for Pavement Section Detail
- H1 Full Depth Paving Limits See Typical Sections for Pavement Section Detail
- Gulick Ave, Beckley St, and Richard Ln Full Depth Paving Limits See Typical Sections for Pavement Section Detail
- Kalihi Stream and Richard Lane Bridge Widening See Structural Plan Sheet for Details
- Gulick Ave Overpass Modifications See Structural Plan Sheet for Details
- Concrete Sidewalk
- Parking Lot Paving See Pavement Structure Detail No 3 on Sheet RD0.05
- Gravel, 6" Depth
- Sawcut
- Chain Link Fence with Toprail, see HDOT Standard Detail D-02

**GENERAL NOTES**

- Notes apply to all Roadway Paving Plans
- For adjustment of drainage structures to grade and drainage removals, see Drainage Plans
- For adjustment of water and sewer structures to grade and removals, see Wet Utility Plans
- For adjustment of electrical structures and lighting, see Electrical Plans
- For signing and striping removals, see Channelization and Signing Plans
- For retaining wall and barrier limits and type, see Wall Plan and Profile Plans
- For detailed grading and dimensions, see Roadway Detail Plans and Roadway Grading Plans
- See discipline specific plans for electrical, signal and drainage legend symbols and abbreviations

**PLAN**  
Scale 1" = 40'

|                   |      |
|-------------------|------|
| SURVEY PLOTTED BY | DATE |
| DRAWN BY          |      |
| TRACED BY         |      |
| QUANTITIES BY     |      |
| CHECKED BY        |      |
| ORIGINAL PLAN     |      |
| NOTE BOOK         |      |
| N.                |      |

**APPROVED**

**CHIEF, TRAFFIC REVIEW BRANCH, OPP DATE**

STATE OF HAWAII  
DEPARTMENT OF TRANSPORTATION  
HIGHWAYS DIVISION

**ROADWAY PAVING PLAN**

INTERSTATE ROUTE H1 (EB) IMPROVEMENTS  
Ola Lane Overpass to Likelike Hwy Off-Ramp

Project No H1H1-01-09

Scale 1" = 40' Date April 2022

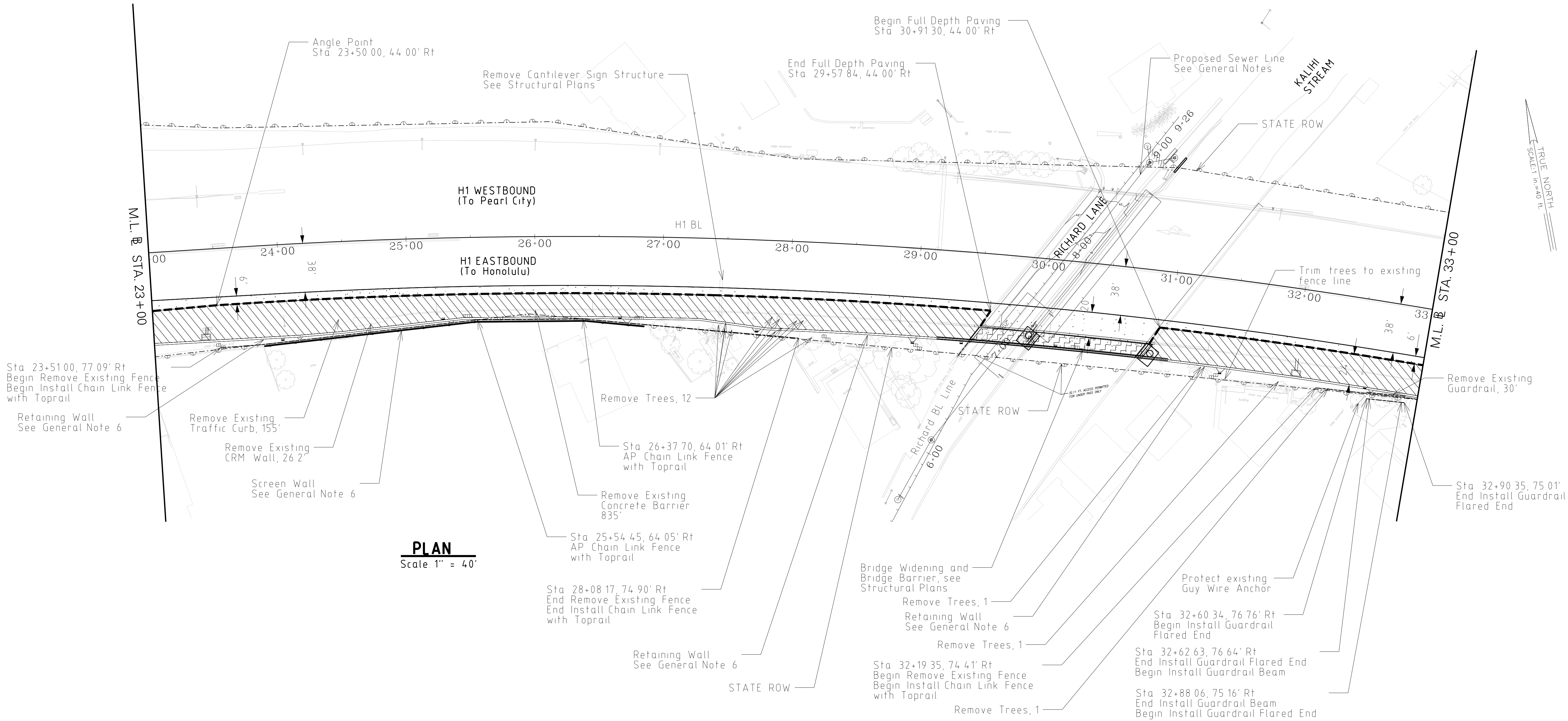
SHEET No. RD1.02 OF 7 SHEETS

JASON Y. KAGE  
LICENSED PROFESSIONAL ENGINEER  
No. 9930-C  
HAWAII U.S.A.

THIS WORK WAS PREPARED BY ME OR UNDER MY SUPERVISION AND CONSTRUCTION OF THIS PROJECT WILL BE UNDER MY OBSERVATION. ("OBSERVATION OF CONSTRUCTION" SHALL BE AS DEFINED IN CHAPTER 115, RULES OF THE BOARD OF PROFESSIONAL ENGINEERS, ARCHITECTS AND SURVEYORS, STATE OF HAWAII, SUBCHAPTER 1, SECTION 16-115-2, DEFINITIONS)

JACOBS ENGINEERING GROUP INC.  
LICENSE EXPIRES XX-XX-XX

| FED. ROAD DIST. NO. | STATE | PROJ. NO.  | FISCAL YEAR | SHEET NO. | TOTAL SHEETS |
|---------------------|-------|------------|-------------|-----------|--------------|
| HAWAII              | HAW.  | H1H1-01-09 | 2022        | XX        | XX           |



**PLAN**  
Scale 1" = 40'

**NOTE**

- 1 See Sheet RD102 for Roadway Paving Legend and General Notes
- 2 See City and County of Honolulu Standard Details R-23 and R-24 for Flared End and Metal Guardrail Details

|                   |      |
|-------------------|------|
| SURVEY PLOTTED BY | DATE |
| DRAWN BY          |      |
| CHECKED BY        |      |
| NOTE BOOK         |      |
| QUANTITIES BY     |      |
| CHECKED BY        |      |



THIS WORK WAS PREPARED BY ME OR UNDER MY SUPERVISION AND CONSTRUCTION OF THIS PROJECT WILL BE UNDER MY OBSERVATION. "OBSERVATION OF CONSTRUCTION" SHALL BE AS DEFINED IN CHAPTER 115, RULES OF THE BOARD OF PROFESSIONAL ENGINEERS, ARCHITECTS AND SURVEYORS, STATE OF HAWAII, SUBCHAPTER 1, SECTION 16-115-2, DEFINITIONS.

JACOBS ENGINEERING GROUP INC.  
LICENSE EXPIRES XX-XX-XX

**APPROVED**

**CHIEF, TRAFFIC REVIEW BRANCH, OPP DATE**

STATE OF HAWAII  
DEPARTMENT OF TRANSPORTATION  
HIGHWAYS DIVISION

**ROADWAY PAVING PLAN**

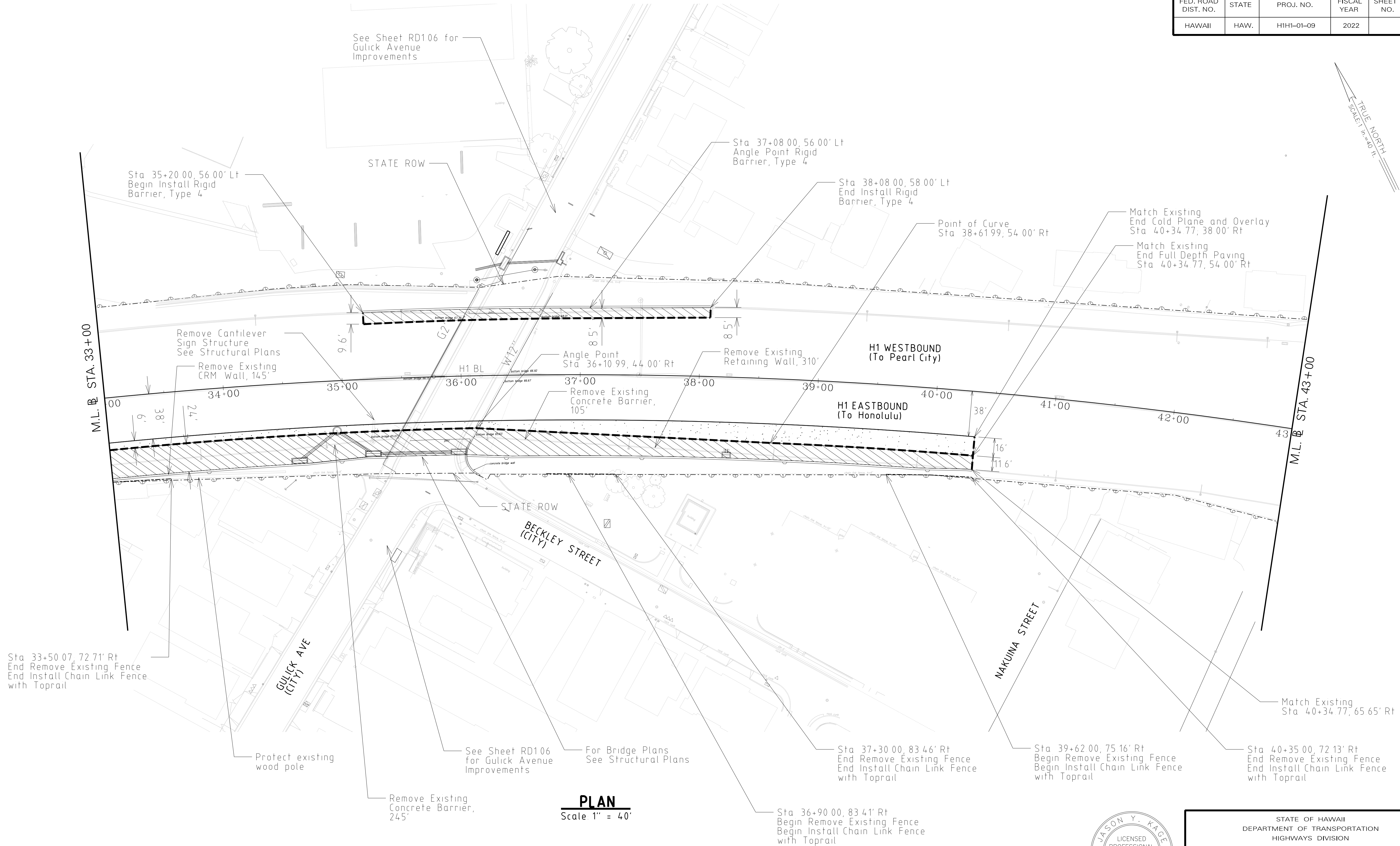
INTERSTATE ROUTE H1 (EB) IMPROVEMENTS  
Ola Lane Overpass to Likelike Hwy Off-Ramp

Project No H1H1-01-09

Scale 1" = 40' Date April 2022

SHEET No. RD1.03 OF 7 SHEETS

| FED. ROAD DIST. NO. | STATE | PROJ. NO.  | FISCAL YEAR | SHEET NO. | TOTAL SHEETS |
|---------------------|-------|------------|-------------|-----------|--------------|
| HAWAII              | HAW.  | H1H1-01-09 | 2022        |           | XX           |



**PLAN**  
Scale 1" = 40'

**NOTE**

1 See Sheet RD102 for Roadway Paving Legend and General Notes

**APPROVED**

**CHIEF, TRAFFIC REVIEW BRANCH, DPP DATE**



THIS WORK WAS PREPARED BY ME OR UNDER MY SUPERVISION AND CONSTRUCTION OF THIS PROJECT WILL BE UNDER MY OBSERVATION. "OBSERVATION OF CONSTRUCTION" SHALL BE AS DEFINED IN CHAPTER 115, RULES OF THE BOARD OF PROFESSIONAL ENGINEERS, ARCHITECTS AND SURVEYORS, STATE OF HAWAII, SUBCHAPTER 1, SECTION 16-115-2, DEFINITIONS.

JACOBS ENGINEERING GROUP INC.  
LICENSE EXPIRES XX-XX-XX

STATE OF HAWAII  
DEPARTMENT OF TRANSPORTATION  
HIGHWAYS DIVISION

**ROADWAY PAVING PLAN**

INTERSTATE ROUTE H1 (EB) IMPROVEMENTS

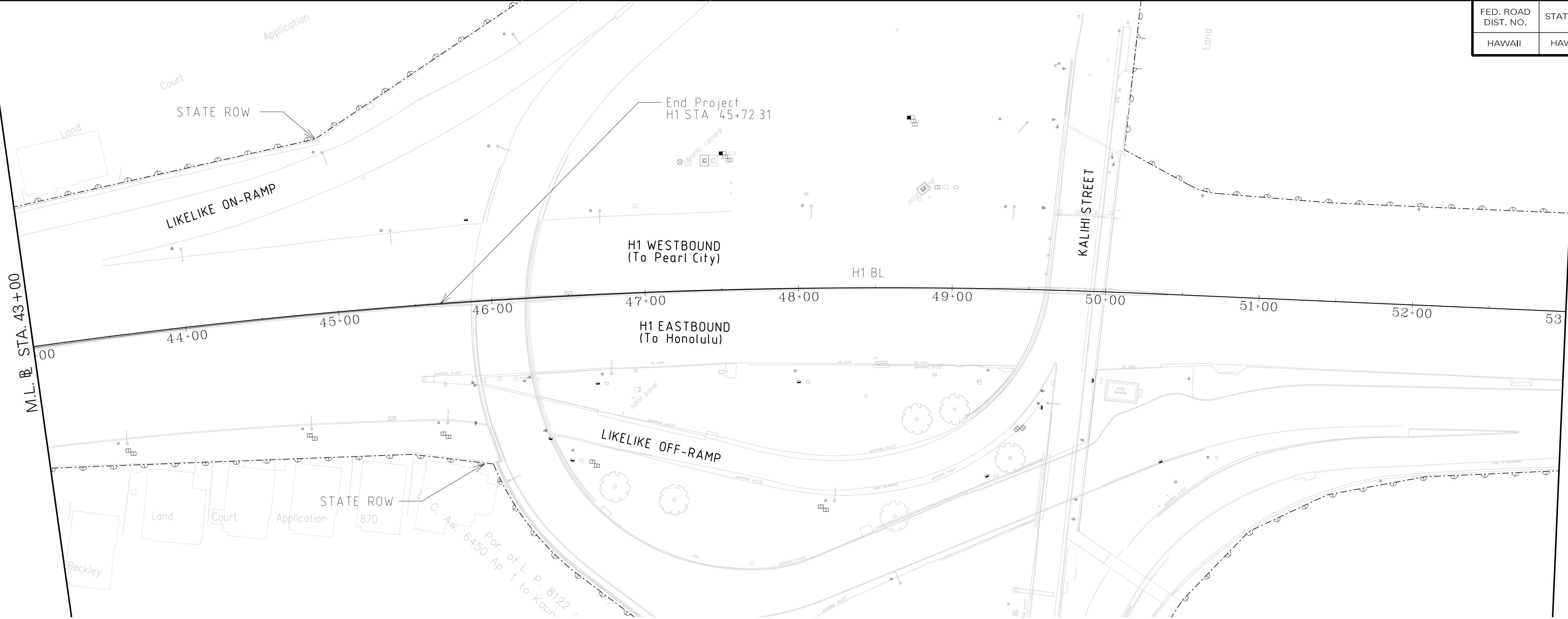
Ola Lane Overpass to Likelike Hwy Off-Ramp

Project No H1H1-01-09

Scale Scale 1" = 40' Date April 2022

SHEET No. RD1.04 OF 7 SHEETS

| FED. ROAD DIST. NO. | STATE | PROJ. NO.  | FISCAL YEAR | SHEET NO. | TOTAL SHEETS |
|---------------------|-------|------------|-------------|-----------|--------------|
| HAWAII              | HAW.  | H1H1-01-09 | 2022        |           | XX           |



**PLAN**  
Scale 1" = 40'

**NOTE**

1 See Sheet RD102 for Roadway Paving Legend and General Notes

**APPROVED**

**CHIEF, TRAFFIC REVIEW BRANCH, OPP DATE**



THIS WORK WAS PREPARED BY ME OR UNDER MY SUPERVISION AND CONSTRUCTION OF THIS PROJECT WILL BE UNDER MY OBSERVATION. ("OBSERVATION OF CONSTRUCTION" SHALL BE AS DEFINED IN CHAPTER 115, RULES OF THE BOARD OF PROFESSIONAL ENGINEERS, ARCHITECTS AND SURVEYORS, STATE OF HAWAII, SUBCHAPTER 1, SECTION 16-115-2, DEFINITIONS)

JACOBS ENGINEERING GROUP INC.  
LICENSE EXPIRES XX-XX-XX

STATE OF HAWAII  
DEPARTMENT OF TRANSPORTATION  
HIGHWAYS DIVISION

**ROADWAY PAVING PLAN**

INTERSTATE ROUTE H1 (EB) IMPROVEMENTS

Ola Lane Overpass to Likelike Hwy Off-Ramp

Project No H1H1-01-09

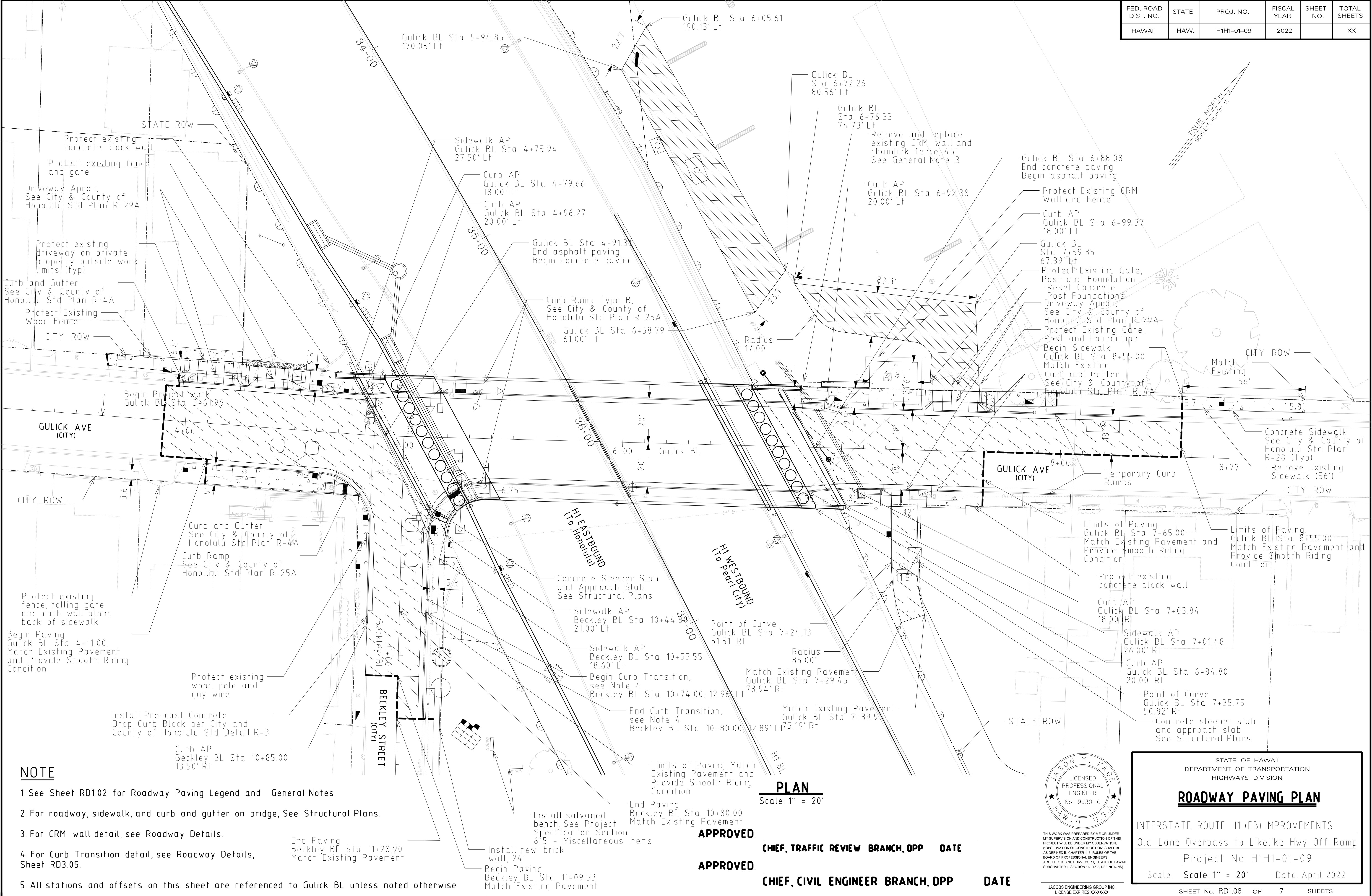
Scale Scale 1" = 40' Date April 2022

SHEET No. RD1.05 OF 7 SHEETS

|                  |                   |      |
|------------------|-------------------|------|
| ORIGINAL<br>PLAN | SURVEY PLOTTED BY | DATE |
|                  | DRAWN BY          |      |
|                  | TRACED BY         |      |
|                  | QUANTITIES BY     |      |
| NOTE BOOK        | CHECKED BY        |      |
|                  |                   |      |



| FED. ROAD DIST. NO. | STATE | PROJ. NO.  | FISCAL YEAR | SHEET NO. | TOTAL SHEETS |
|---------------------|-------|------------|-------------|-----------|--------------|
| HAWAII              | HAW.  | H1H1-01-09 | 2022        | XX        | XX           |



**NOTE**

- 1 See Sheet RD102 for Roadway Paving Legend and General Notes
- 2 For roadway, sidewalk, and curb and gutter on bridge, See Structural Plans
- 3 For CRM wall detail, see Roadway Details
- 4 For Curb Transition detail, see Roadway Details, Sheet RD3 05
- 5 All stations and offsets on this sheet are referenced to Gulick BL unless noted otherwise

**PLAN**  
Scale 1" = 20'

**APPROVED:** \_\_\_\_\_  
**CHIEF, TRAFFIC REVIEW BRANCH, OPP**     **DATE** \_\_\_\_\_

**APPROVED:** \_\_\_\_\_  
**CHIEF, CIVIL ENGINEER BRANCH, OPP**     **DATE** \_\_\_\_\_



THIS WORK WAS PREPARED BY ME OR UNDER MY SUPERVISION AND CONSTRUCTION OF THIS PROJECT WILL BE UNDER MY OBSERVATION. OBSERVATION OF CONSTRUCTION SHALL BE AS DEFINED IN CHAPTER 115, RULES OF THE BOARD OF PROFESSIONAL ENGINEERS, ARCHITECTS AND SURVEYORS, STATE OF HAWAII, SUBCHAPTER 1, SECTION 16-115-2, DEFINITIONS.

JACOBS ENGINEERING GROUP INC.  
LICENSE EXPIRES XX-XX-XX

STATE OF HAWAII  
DEPARTMENT OF TRANSPORTATION  
HIGHWAYS DIVISION

**ROADWAY PAVING PLAN**

INTERSTATE ROUTE H1 (EB) IMPROVEMENTS

Ola Lane Overpass to Likelike Hwy Off-Ramp

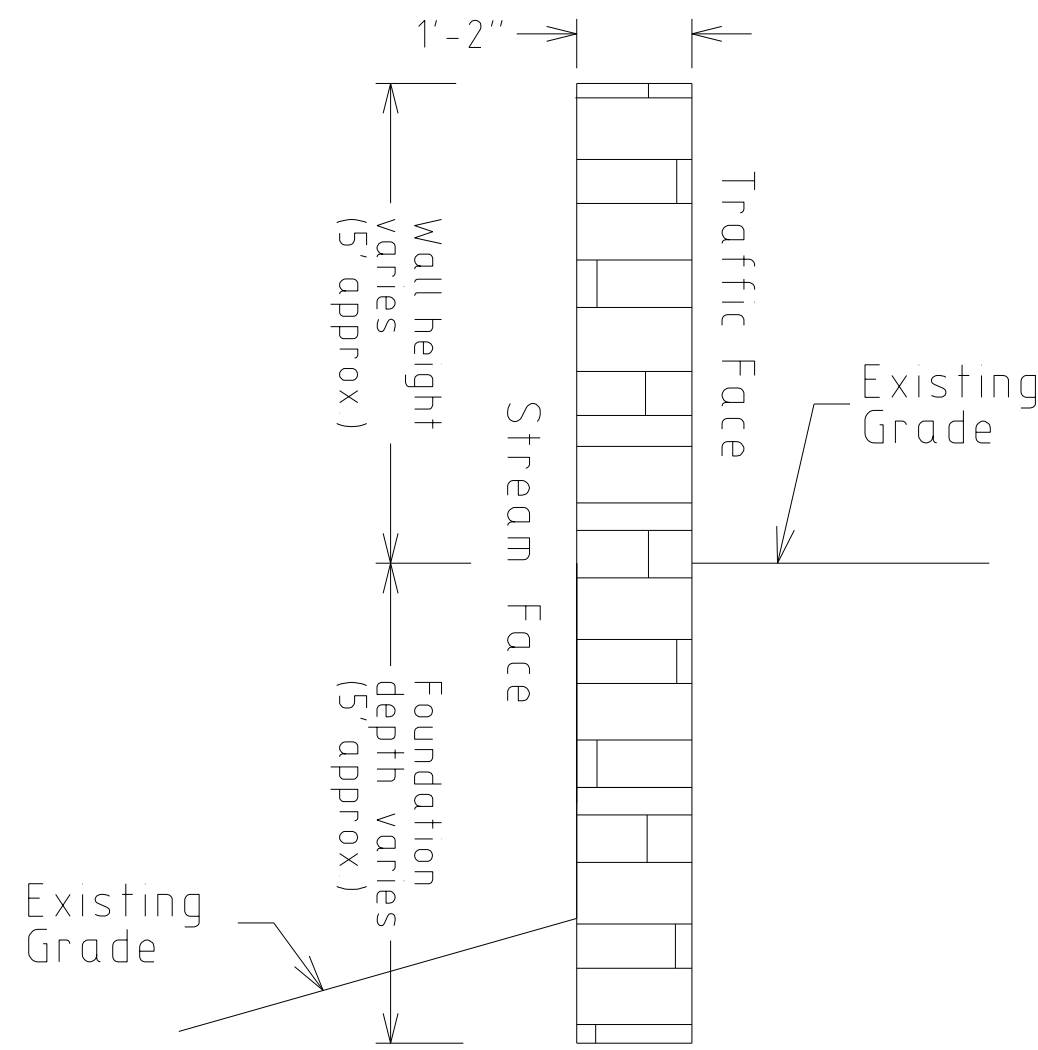
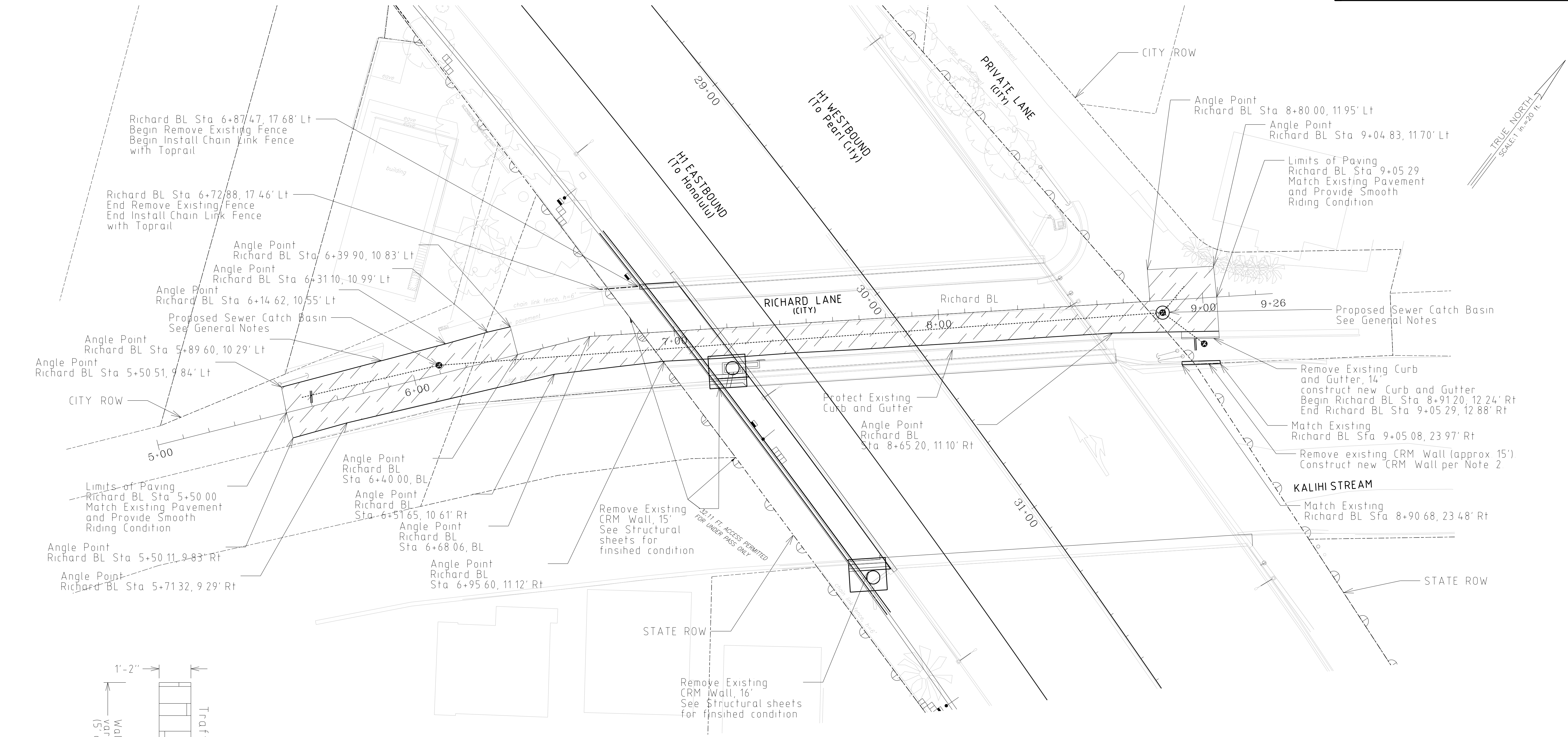
Project No H1H1-01-09

Scale     Scale 1" = 20'     Date April 2022

SHEET No. RD1.06     OF     7     SHEETS

|                         |            |
|-------------------------|------------|
| SURVEY PLOTTED BY _____ | DATE _____ |
| DRAWN BY _____          |            |
| TRACED BY _____         |            |
| NOTE BOOK _____         |            |
| QUANTITIES BY _____     |            |
| CHECKED BY _____        |            |
| ORIGINAL _____          |            |

| FED. ROAD DIST. NO. | STATE | PROJ. NO.  | FISCAL YEAR | SHEET NO. | TOTAL SHEETS |
|---------------------|-------|------------|-------------|-----------|--------------|
| HAWAII              | HAW.  | H1H1-01-09 | 2022        |           | XX           |



**PLAN**  
Scale 1" = 20'

- NOTES**
- 1 See Sheet RD102 for Roadway Paving Legend and General Notes.
  - 2 CRM Wall height and minimum embedment varies (see Richard Lane CRM Wall Typical Section, this sheet) Match existing at both ends Contractor to design

**APPROVED** \_\_\_\_\_  
**CHIEF, TRAFFIC REVIEW BRANCH, DPP**      **DATE**

**APPROVED** \_\_\_\_\_  
**CHIEF, CIVIL ENGINEER BRANCH, DPP**      **DATE**



THIS WORK WAS PREPARED BY ME OR UNDER MY SUPERVISION AND CONSTRUCTION OF THIS PROJECT WILL BE UNDER MY OBSERVATION. ("OBSERVATION OF CONSTRUCTION" SHALL BE AS DEFINED IN CHAPTER 115, RULES OF THE BOARD OF PROFESSIONAL ENGINEERS, ARCHITECTS AND SURVEYORS, STATE OF HAWAII, SUBCHAPTER 1, SECTION 16-115-2, DEFINITIONS)

JACOBS ENGINEERING GROUP INC.  
LICENSE EXPIRES XX-XX-XX

STATE OF HAWAII  
DEPARTMENT OF TRANSPORTATION  
HIGHWAYS DIVISION

**ROADWAY PAVING PLAN**

INTERSTATE ROUTE H1 (EB) IMPROVEMENTS  
Ola Lane Overpass to Likelike Hwy Off-Ramp

Project No H1H1-01-09

Scale      Scale 1" = 20'      Date April 2022

SHEET No. RD1.07      OF      7      SHEETS