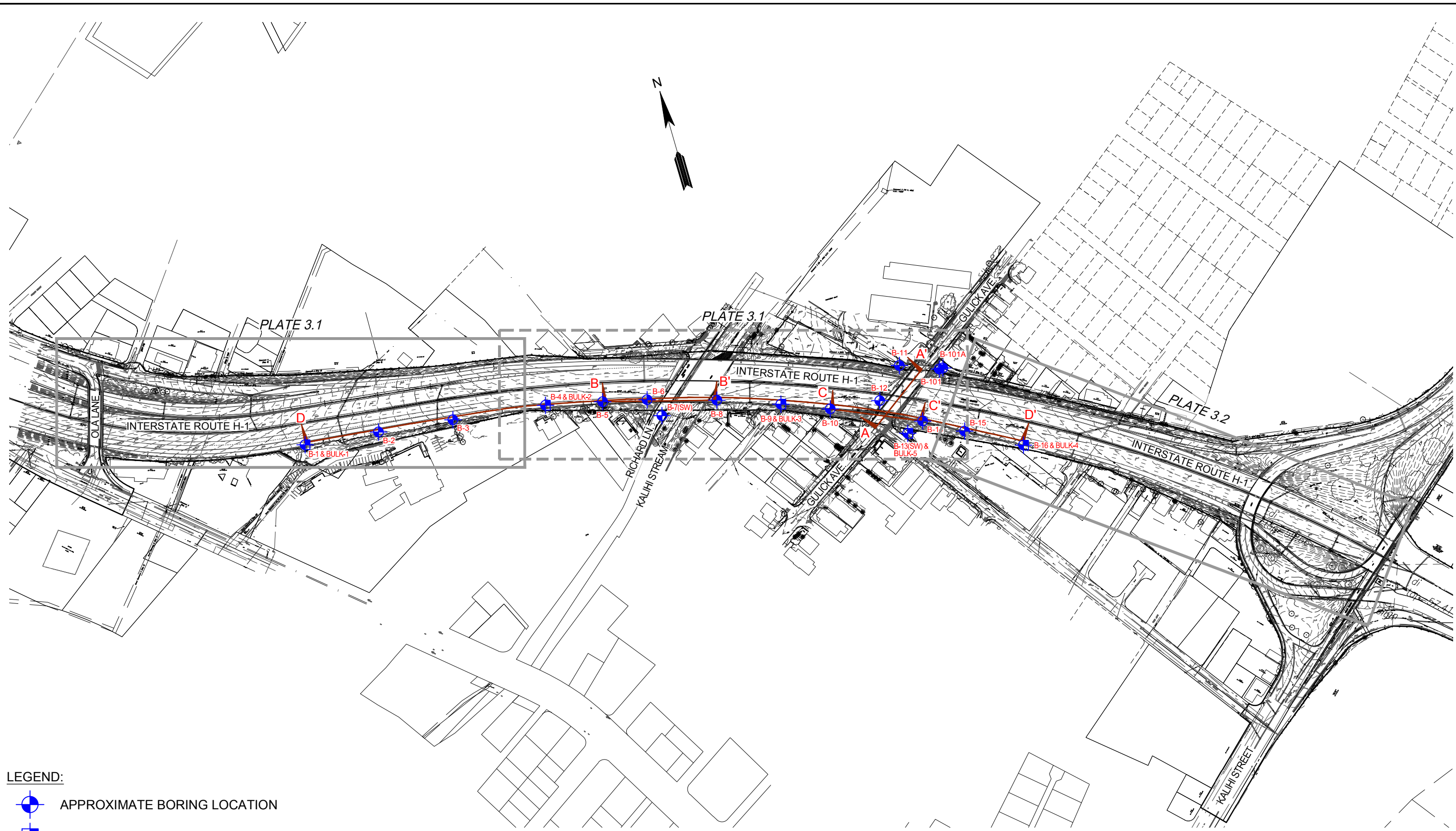
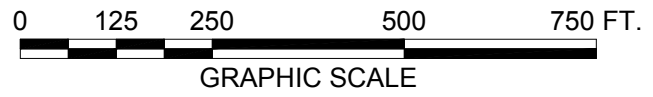


CAD User: HENRY File Last Updated: April 28, 2021 2:23:23pm Plot Date: May 03, 2021 - 3:29:41pm
File: A:\Drafting\Working\8049-00&10 Interstate Route H-1 Congestion Improvements\8049-00&10SitePlan.dwg
Plotter: DWG To PDF - GEO.pc3 PlotStyle: ATASTANDARD HALF.cb




- LEGEND:**
- APPROXIMATE BORING LOCATION
 - APPROXIMATE BULK SAMPLE LOCATION
 - SEISMIC SHEAR WAVE VELOCITY TEST
 - GENERALIZED GEOLOGIC CROSS-SECTION



REFERENCE: TOPOGRAPHIC SURVEY MAP TRANSMITTED BY JACOBS ON JANUARY 5, 2021.

OVERALL SITE PLAN
INTERSTATE ROUTE H-1 (EB) IMPROVEMENTS
OLA LANE OVERPASS TO KALIHI STREET INTERCHANGE
HONOLULU, OAHU, HAWAII

			GEOLABS, INC. Geotechnical Engineering	
DATE	JANUARY 2021	DRAWN BY	HYC	PLATE 2
SCALE	1" = 250'	W.O.	8049-00 & 10(B)	