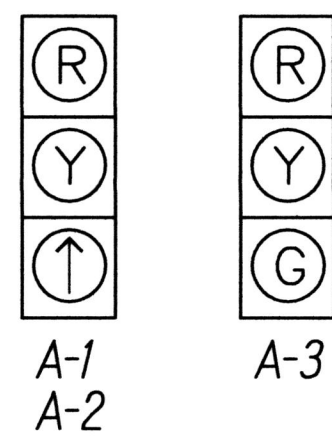
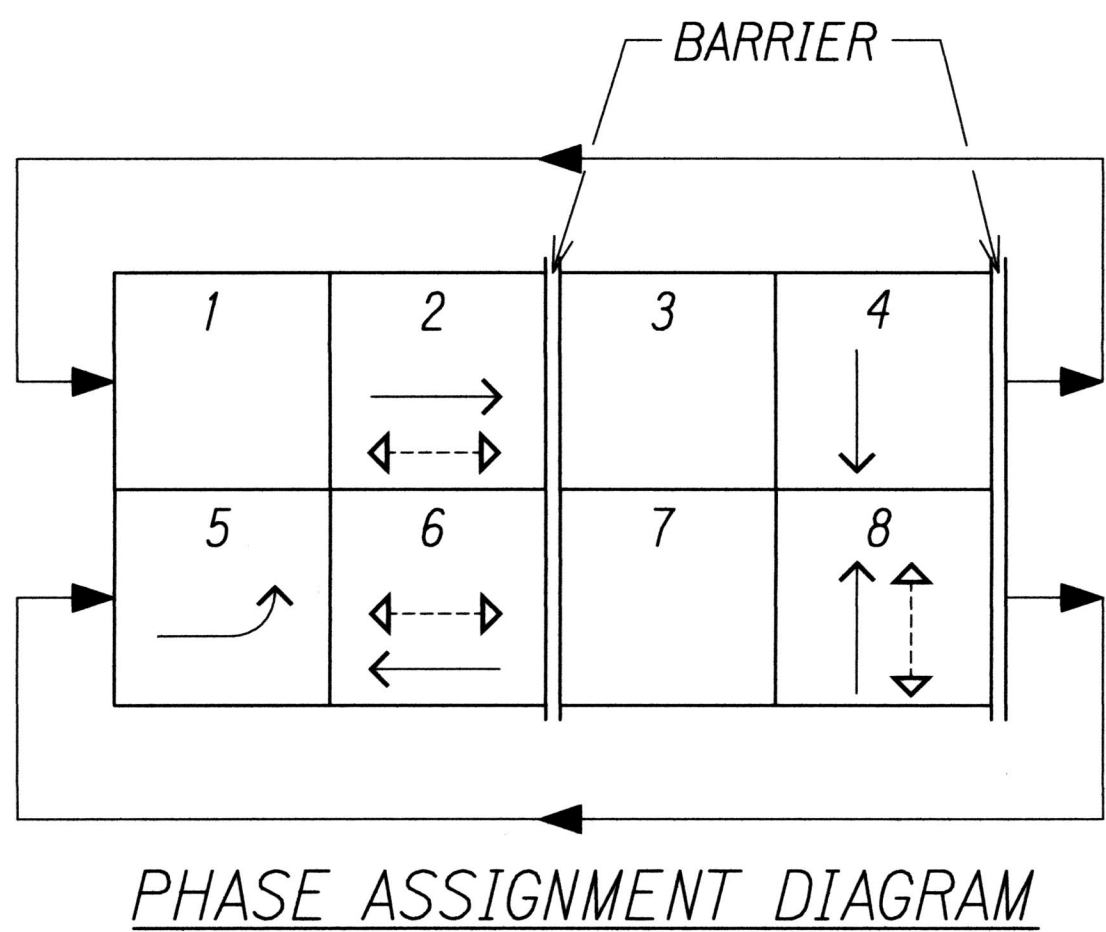


FED. ROAD DIST. NO.	STATE	FED. AID PROJ. NO.	FISCAL YEAR	SHEET NO.	TOTAL SHEETS
HAWAII	HAW.	IM-HI-1(244)	2017	26	273

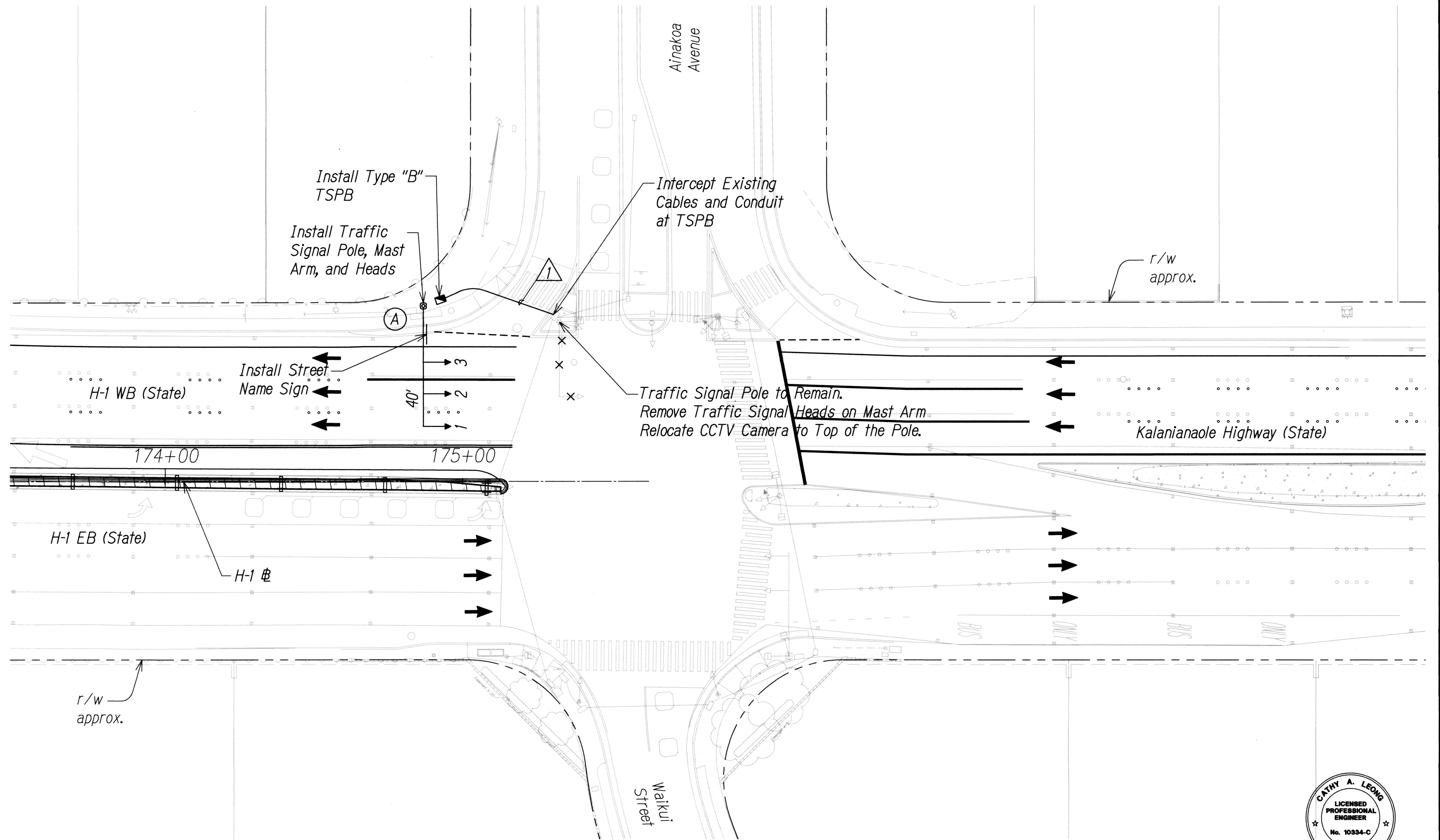
TRUE NORTH  
SCALE: 1" = 20'

PHASE DIAGRAM		
PHASE 2, 5	PHASE 2, 6	PHASE 4, 8



- NOTE:
1. Install Backplates on New Mast Arm Mounted Traffic Signal Heads on Horizontal Portion of Mast Arm only. Backplates shall be 5" with slots to reduce Wind Load with 1" Retro-Reflective Border.
  2. See TSP-2 for Street Name Sign Detail.

GRAPHIC SCALE:  
20' 10' 0 20' 40'  
SCALE: 1" = 20'



CONDUIT AND CABLE SCHEDULE		
Δ	CONDUIT	CABLE
1	2-2"	2-26C#14
	2-2"	SPARE

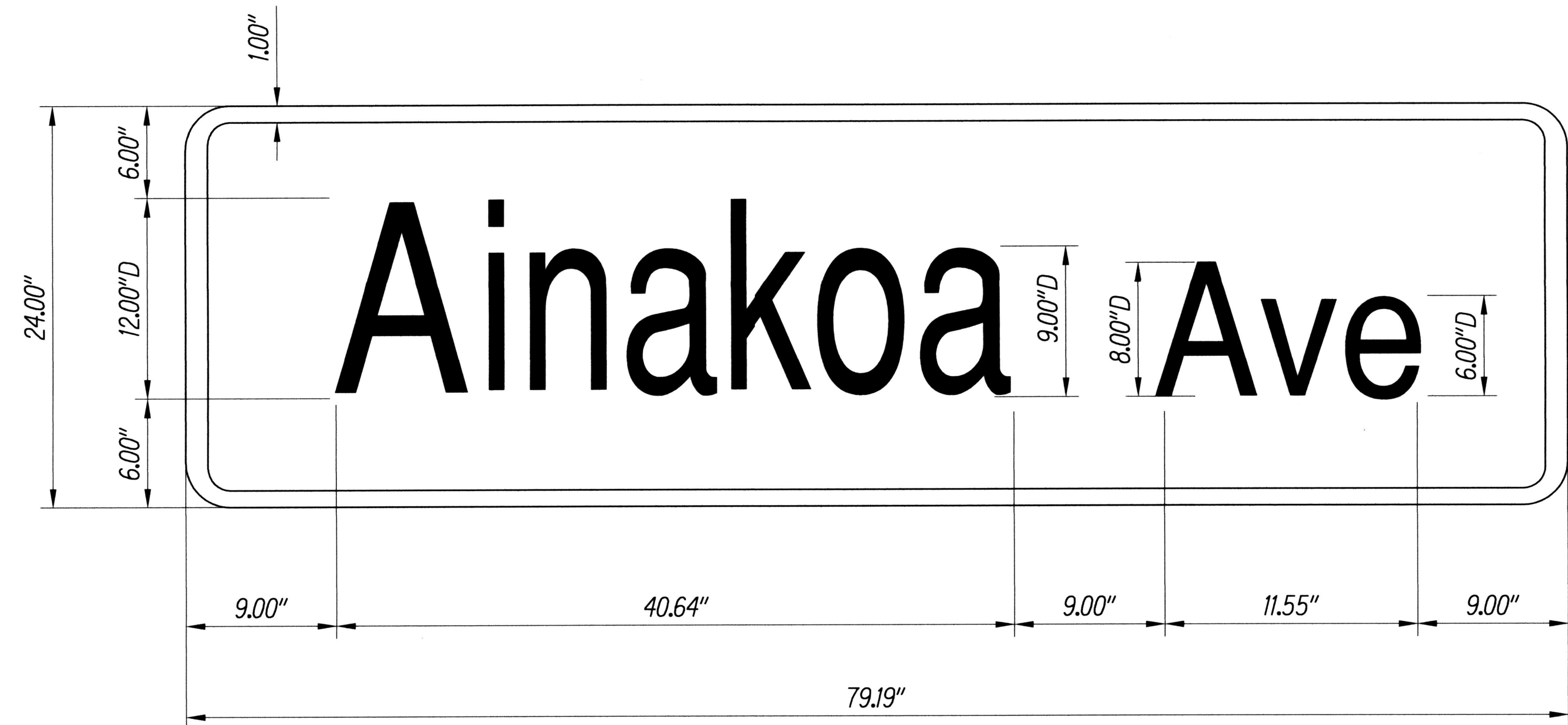
DESIGNED BY	DATE
TRACED BY	
NOTED BY	
CHECKED BY	
ORIGINAL PLAN	
NOTE BOOK	
No.	



THIS WORK WAS PREPARED BY ME  
OR UNDER MY SUPERVISION.  
*Cathy A. Leong* APR 30, 2018  
WILSON GRAMOTO CORPORATION LIC. EXP. DATE

STATE OF HAWAII  
DEPARTMENT OF TRANSPORTATION  
HIGHWAYS DIVISION  
  
**TRAFFIC SIGNAL PLAN**  
  
INTERSTATE ROUTE H-1  
Guardrail and Shoulder Improvements,  
Kapiolani Interstate to Ainakoa Avenue  
Fed. Aid Project No. IM-HI-1(244)  
Scale: 1" = 20' Date: July 2017  
  
SHEET No. TSP-1 OF 2 SHEETS

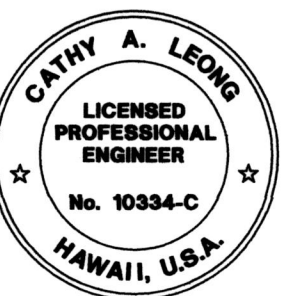
FED. ROAD DIST. NO.	STATE	FED. AID PROJ. NO.	FISCAL YEAR	SHEET NO.	TOTAL SHEETS
HAWAII	HAW.	1M-H1-1(244)	2017	27	273



**NOTES:**

1. Street Name Signs Shall be in Accordance with State Standard Plan TE-13.
2. All Sign Faces Shall be Completely Reflecterized with Type "B" Reflective Sheeting.

ORIGINAL PLAN	SURVEY PLOTTED BY	DATE
NOTE BOOK	DRAWN BY	
No.	DESIGNED BY	
	QUANTITIES BY	
	CHECKED BY	



THIS WORK WAS PREPARED BY ME  
OR UNDER MY SUPERVISION.

*Cathy A. Leong*  
WILSON KAMOTO CORPORATION LUC. EXP. DATE

STATE OF HAWAII  
DEPARTMENT OF TRANSPORTATION  
HIGHWAYS DIVISION

**TRAFFIC SIGNAL DETAILS**

*INTERSTATE ROUTE H-1  
Guardrail and Shoulder Improvements,  
Kapiolani Interstate to Ainakoa Avenue  
Fed. Aid Project No. 1M-H1-1(244)*

Scale: Not to Scale Date: July 2017

SHEET No. TSP-2 OF 2 SHEETS