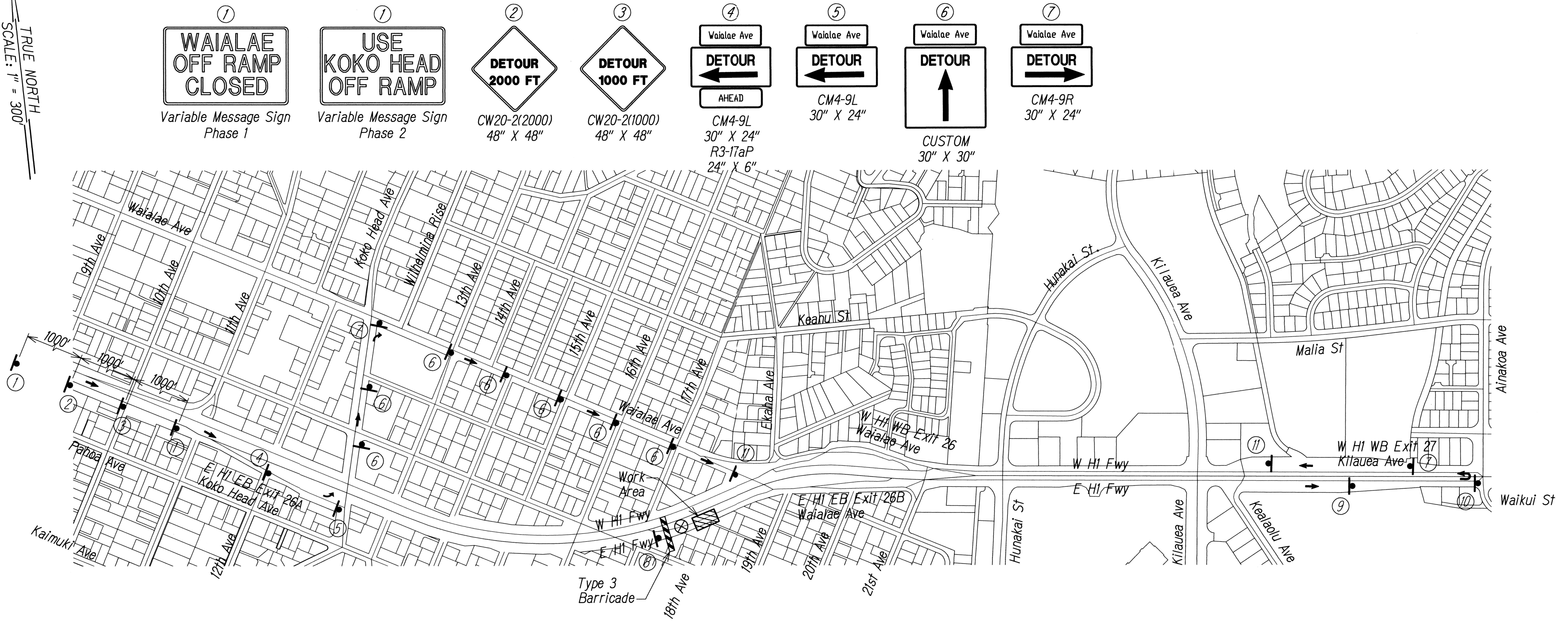


FED. ROAD DIST. NO.	STATE	FED. AID PROJ. NO.	FISCAL YEAR	SHEET NO.	TOTAL SHEETS
HAWAII	HAW.	1M-H1-1(244)	2017	142	273

TRUE NORTH  
SCALE: 1" = 300'



- ① WAIALAE OFF RAMP CLOSED  
Variable Message Sign Phase 1
- ② USE KOKO HEAD OFF RAMP  
Variable Message Sign Phase 2
- ③ DETOUR 2000 FT  
CW20-2(2000) 48" X 48"
- ④ DETOUR 1000 FT  
CW20-2(1000) 48" X 48"
- ⑤ Waialae Ave  
DETOUR  
AHEAD  
CM4-9L 30" X 24"
- ⑥ Waialae Ave  
DETOUR  
CM4-9L 30" X 24"
- ⑦ Waialae Ave  
DETOUR  
CUSTOM 30" X 30"

- ⑧ ROAD CLOSED  
R11-2 48" X 30"
- ⑨ Waialae Ave  
DETOUR  
AHEAD  
CUSTOM 30" X 24"
- ⑩ Waialae Ave  
DETOUR  
CUSTOM 30" X 30"
- ⑪ END DETOUR  
CM4-8A 24" X 18"

- LEGEND
- ⊗ Special Duty Officer w/Vehicle and Blue Light
  - Cones or Delineators
  - Sign
  - Flow of Traffic
  - ▨ Type 3 Barricade

GRAPHIC SCALE:  
300' 150' 0 300' 600'  
SCALE: 1" = 300'

- NOTES:
1. Work Hours to Occur Between 9:30 p.m. to 5:00 a.m. (Monday through Friday).
  2. Contractor to Remove or Cover Conflicting Signs Used During the 24-hr Shoulder Closure on H-1.
  3. See TC-49 for ramp closure.



THIS WORK WAS PREPARED BY ME OR UNDER MY SUPERVISION.  
*Cathy A. Leong*  
WILSON OKAMOTO CORPORATION APR 30, 2018 LIC. EXP. DATE

PHASE 6 - WAIALAE AVE OFF-RAMP EASTBOUND DETOUR  
TEMPORARY CLOSURE  
(DURATION: 2 WEEKS)  
SCALE: 1" = 300'

STATE OF HAWAII  
DEPARTMENT OF TRANSPORTATION  
HIGHWAYS DIVISION

**DETOUR PLAN**

INTERSTATE ROUTE H-1  
Guardrail and Shoulder Improvements,  
Kapiolani Interstate to Ainakoa Avenue  
Fed. Aid Project No. 1M-H1-1(244)  
Scale: 1" = 300' Date: July 2017

SHEET No. TD-1 OF 3 SHEETS

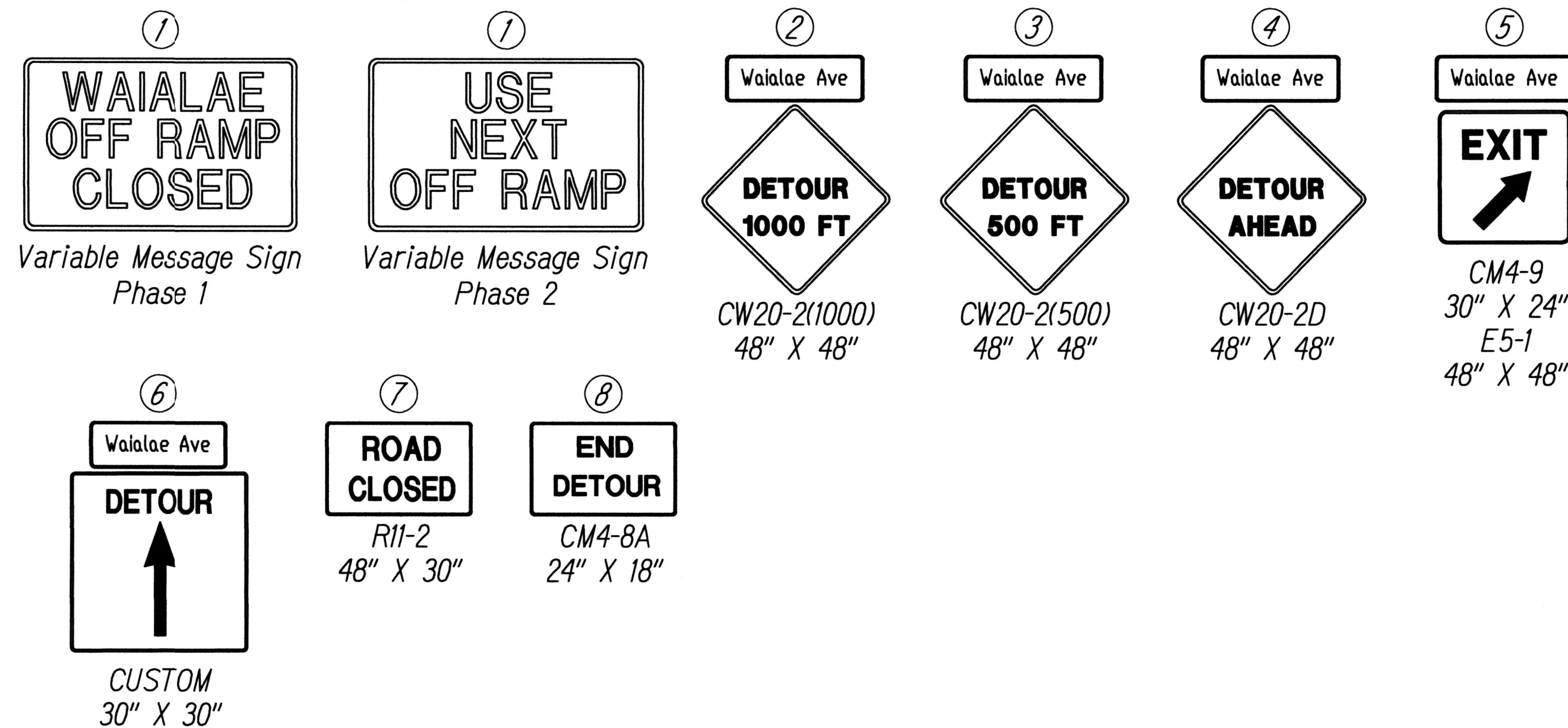
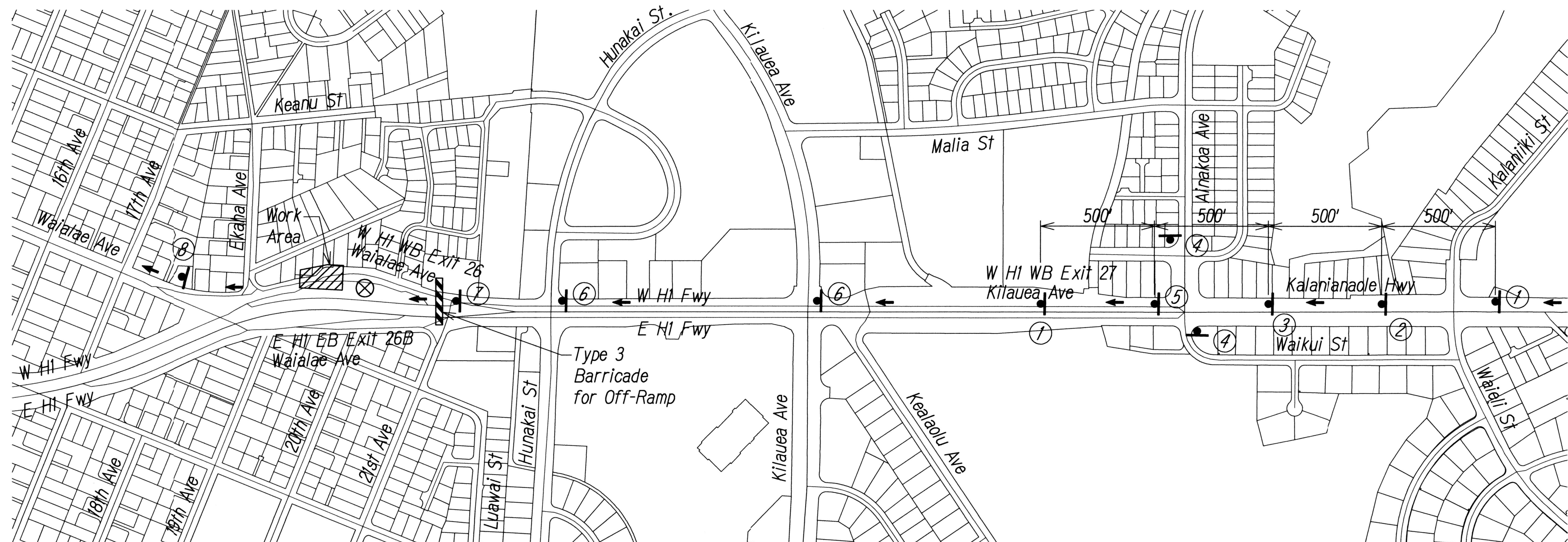
SURVEY PLOTTED BY	DATE
DRAWN BY	
DESIGNED BY	
NOTED BY	
CHECKED BY	

ORIGINAL PLAN	No.
NOTE BOOK	



FED. ROAD DIST. NO.	STATE	FED. AID PROJ. NO.	FISCAL YEAR	SHEET NO.	TOTAL SHEETS
HAWAII	HAW.	1M-HI-1(244)	2017	143	273

TRUE NORTH  
SCALE: 1" = 300'



#### LEGEND

- ⊗ Special Duty Officer w/Vehicle and Blue Light
- Cones or Delineators
- Sign
- Flow of Traffic
- ▨ Type 3 Barricade

GRAPHIC SCALE:  
300' 150' 0 300' 600'  
SCALE: 1" = 300'

#### NOTES:

1. Work Hours to Occur Between 8:30 a.m. to 3:00 p.m. and 9:30 p.m. to 5:00 a.m. (Monday through Friday).
2. Contractor to Remove or Cover Conflicting Signs Used During the 24-hr Shoulder Closure.
3. See TC-83 and TC-84 for ramp closure.



THIS WORK WAS PREPARED BY ME  
OR UNDER MY SUPERVISION.  
*Cathy A. Leong*  
WILSON OKAMOTO CORPORATION LIC. EXP. DATE

STATE OF HAWAII  
DEPARTMENT OF TRANSPORTATION  
HIGHWAYS DIVISION

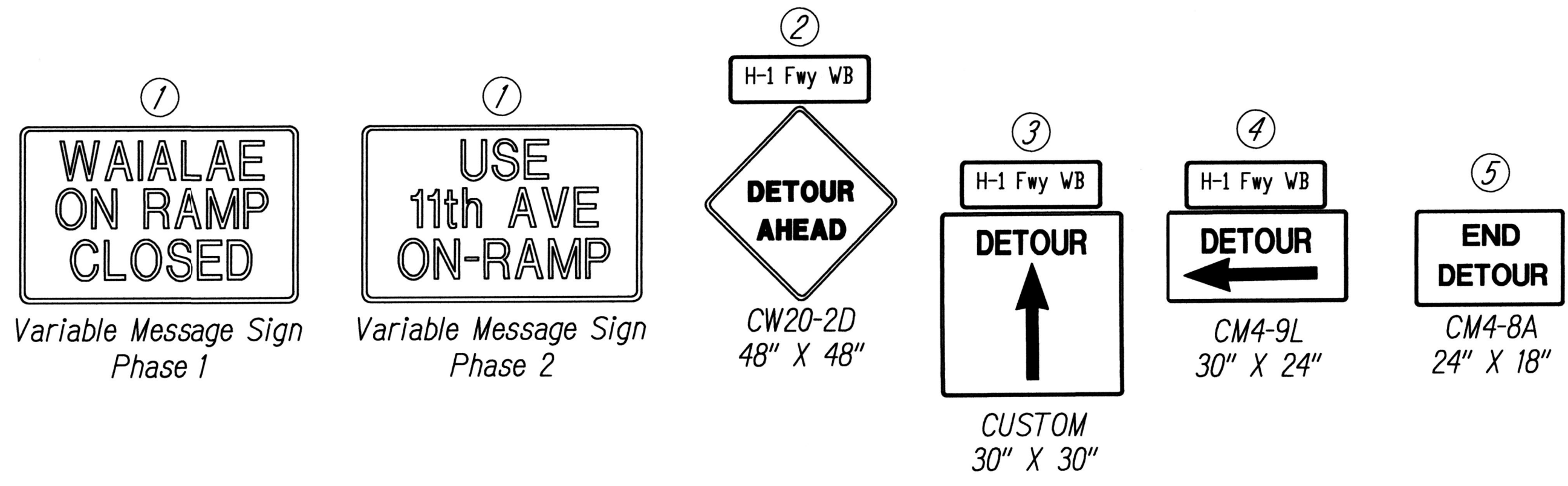
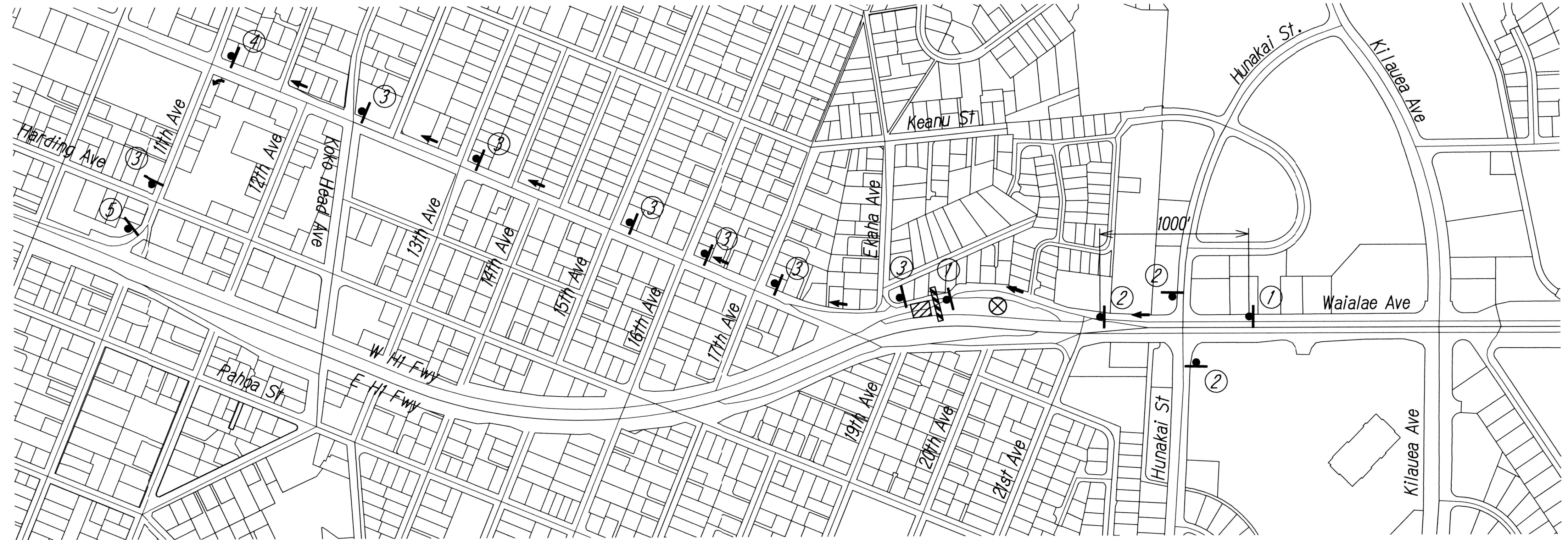
#### DETOUR PLAN

INTERSTATE ROUTE H-1  
Guardrail and Shoulder Improvements,  
Kapiolani Interstate to Ainakoa Avenue  
Fed. Aid Project No. 1M-HI-1(244)  
Scale: 1" = 300' Date: July 2017

SHEET No. TD-2 OF 3 SHEETS



TRUE NORTH  
SCALE: 1" = 300'



- NOTES:
1. Work Hours to Occur Between 9:30 p.m. to 5:00 a.m. (Monday through Friday).
  2. Contractor to Remove or Cover Conflicting Signs Used During the 24-hr Shoulder Closure.
  3. See TC-85 and TC-86 for ramp closure.

- LEGEND
- ⊗ Special Duty Officer w/Vehicle and Blue Light
  - Cones or Delineators
  - Sign
  - Flow of Traffic
  - ▨ Type 3 Barricade

GRAPHIC SCALE:  
300' 150' 0 300' 600'  
SCALE: 1" = 300'

PHASE 12 - WAIALAE ON-RAMP WESTBOUND DETOUR  
TEMPORARY CLOSURE  
(DURATION: 1 WEEKS)  
SCALE: 1" = 300'



THIS WORK WAS PREPARED BY ME  
OR UNDER MY SUPERVISION.  
*Cathy A. Leong*  
WILSON OKAMOTO CORPORATION LIC. EXP. DATE

STATE OF HAWAII  
DEPARTMENT OF TRANSPORTATION  
HIGHWAYS DIVISION

**DETOUR PLAN**

INTERSTATE ROUTE H-1  
Guardrail and Shoulder Improvements,  
Kapiolani Interstate to Ainakoa Avenue  
Fed. Aid Project No. 1M-HI-1(244)  
Scale: 1" = 300' Date: July 2017

SHEET No. TD-3 OF 3 SHEETS

SURVEY PLOTTED BY	DATE
DRAWN BY	
DESIGNED BY	
QUANTITIES BY	
CHECKED BY	
ORIGINAL PLAN	
NOTE BOOK	
No.	