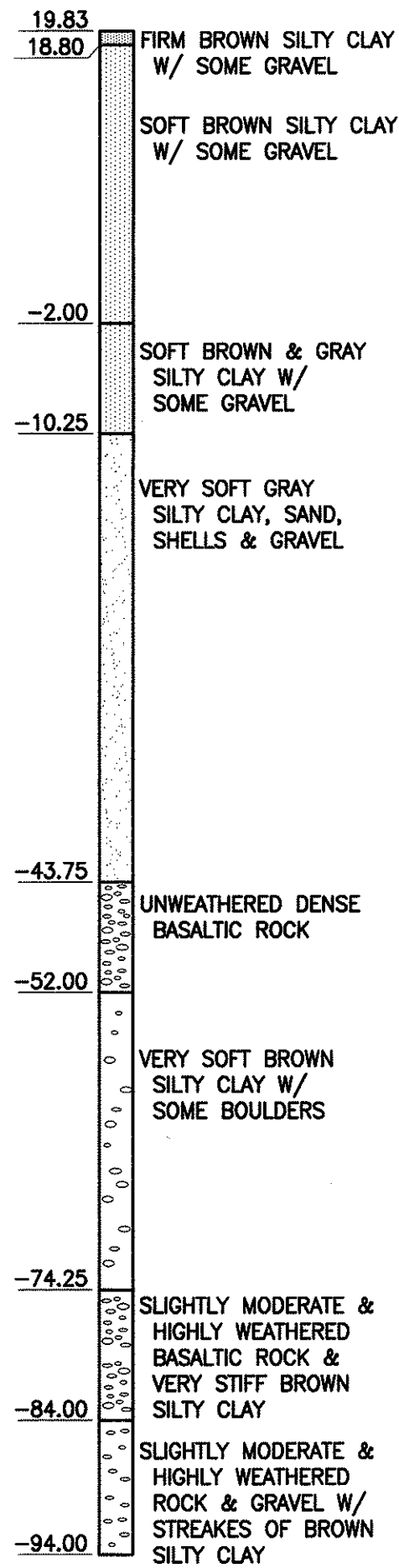
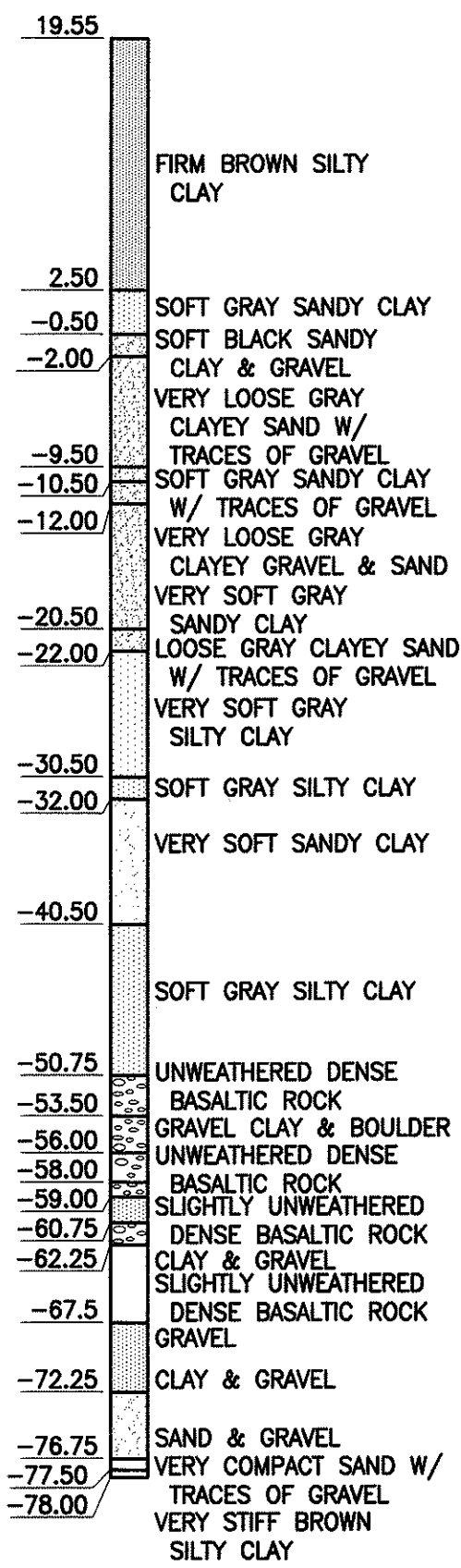


FED. ROAD DIST. NO.	STATE	FED. AID PROJ. NO.	FISCAL YEAR	SHEET NO.	TOTAL SHEETS
HAWAII	HAW.	BR-H1-1(226)	2003	7	36

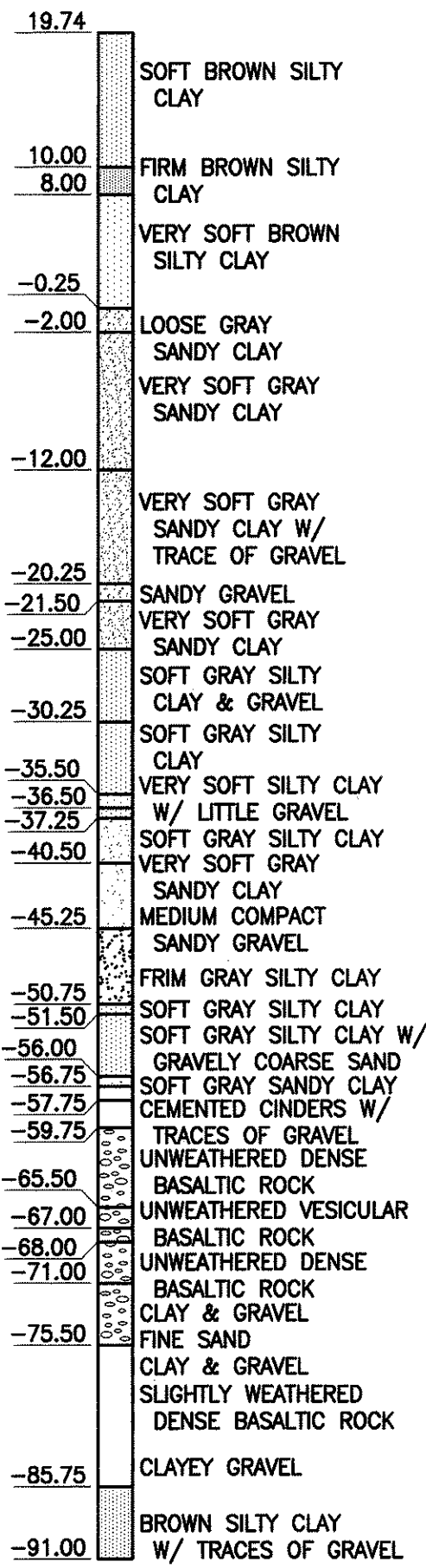
S-12



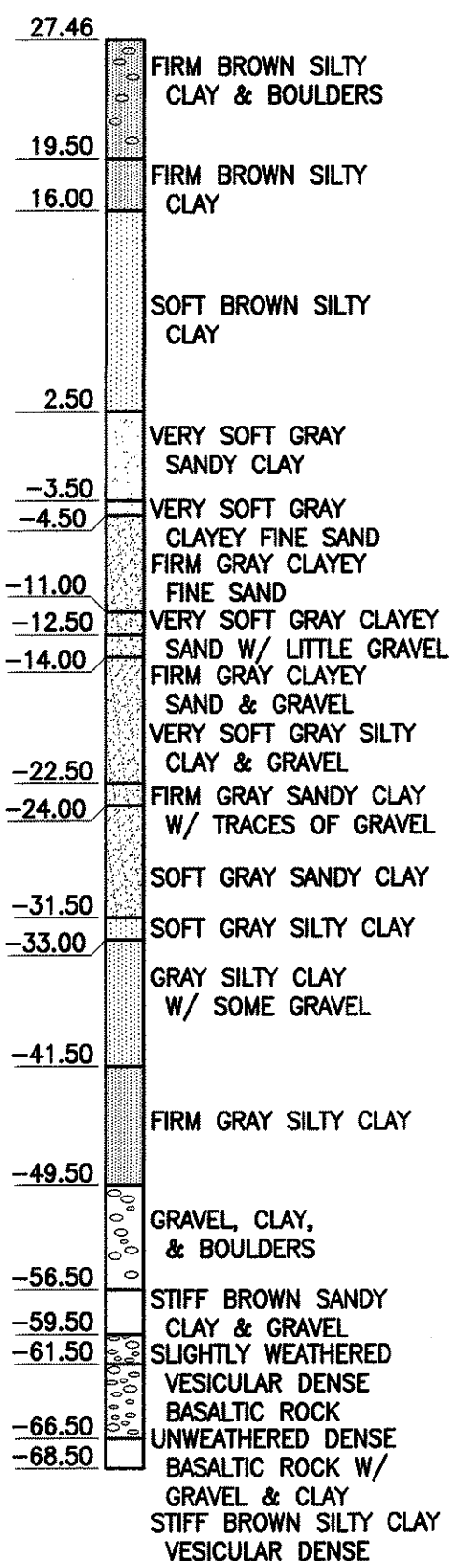
S-13



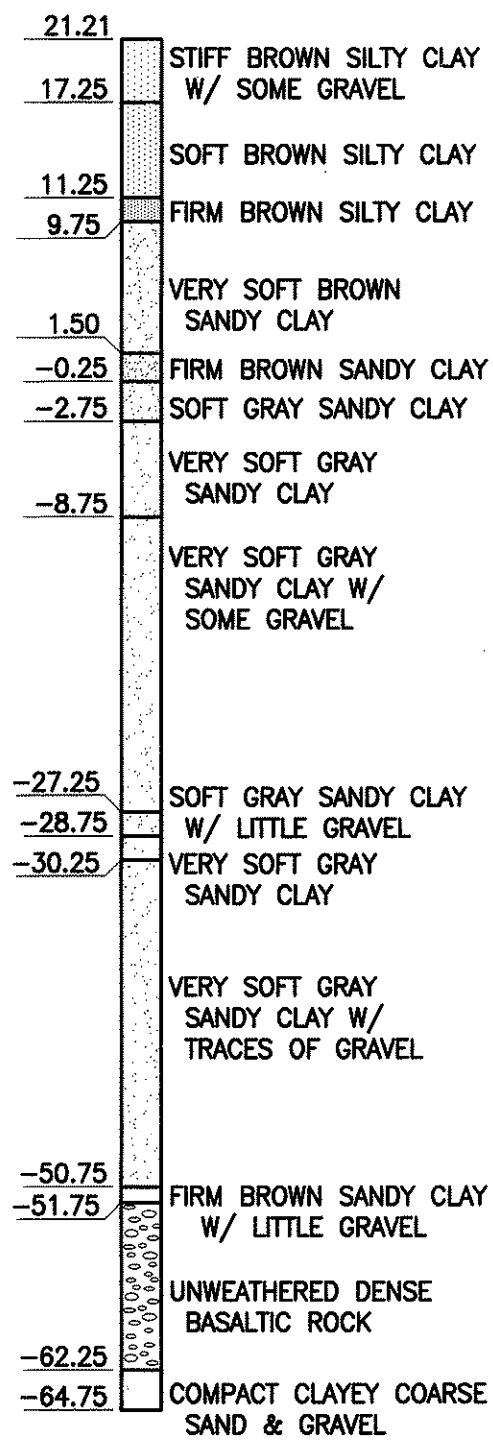
S-14



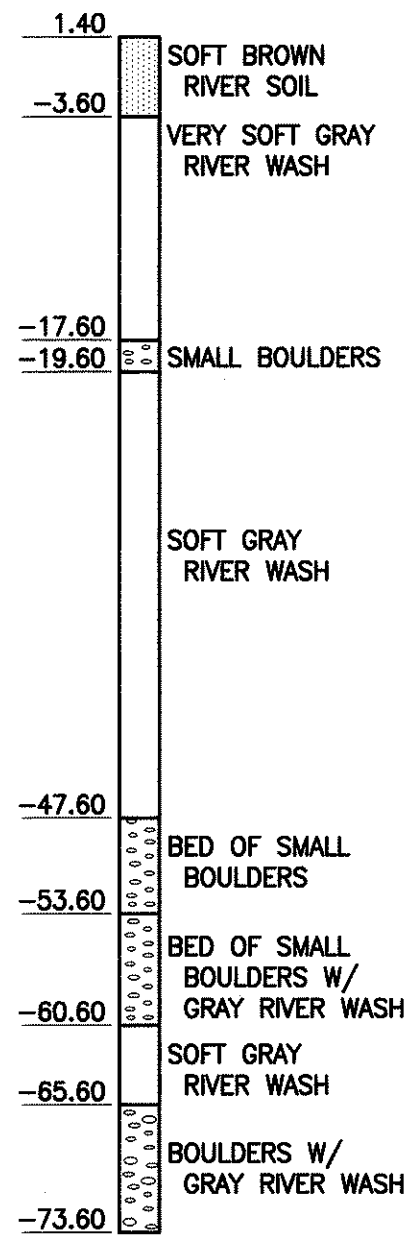
S-15



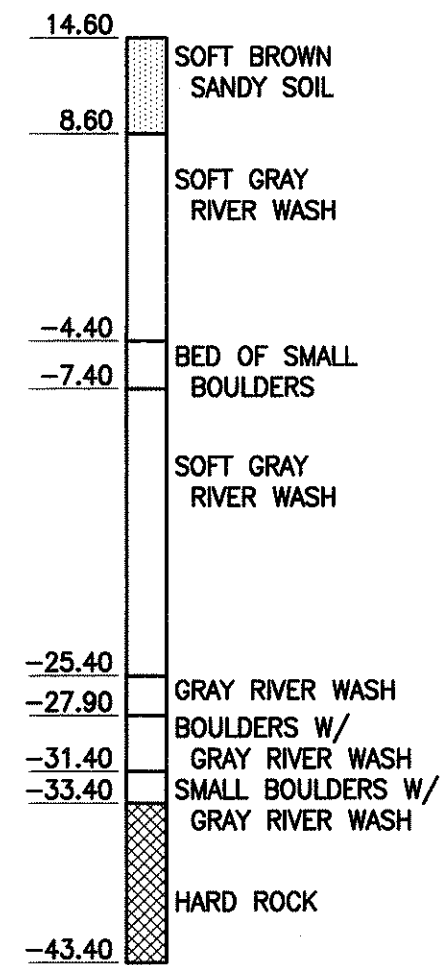
S-16



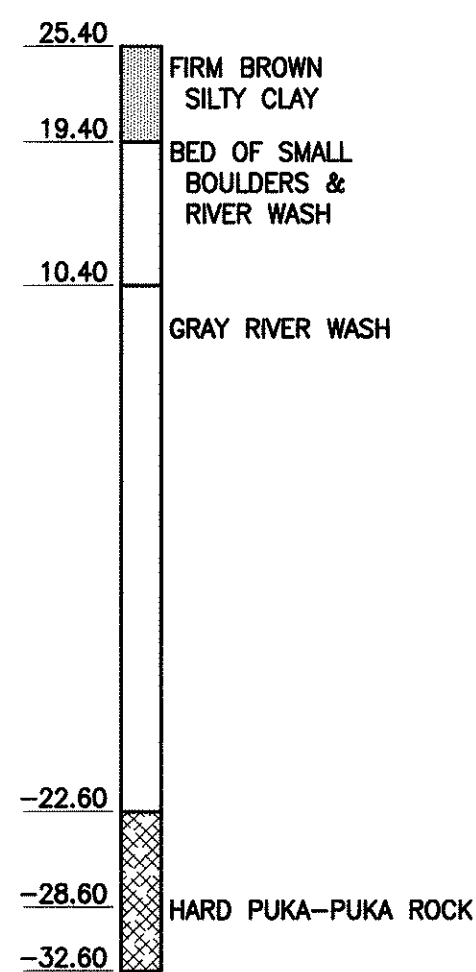
B-43



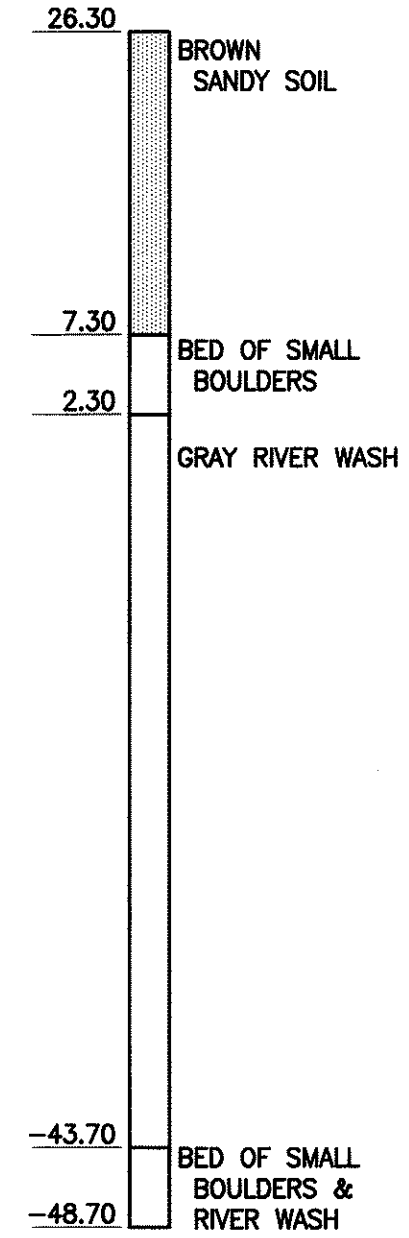
B-44



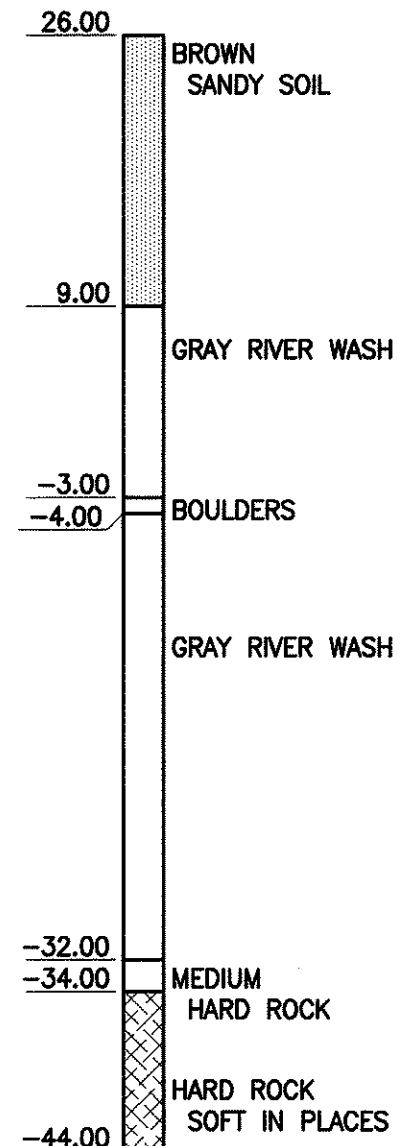
B-45



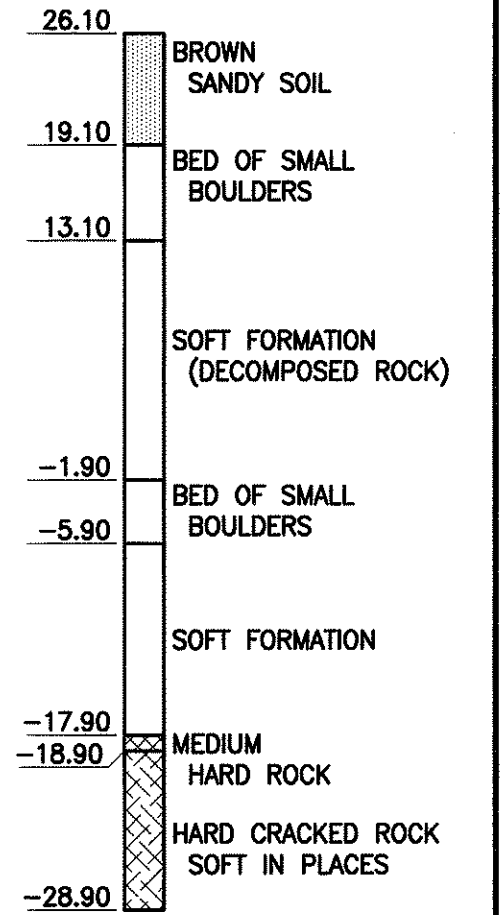
B-46



B-47

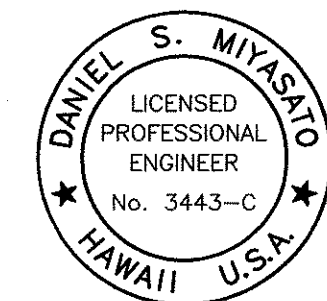


B-48



BORING LOG DATA TAKEN FROM INTERSTATE HIGHWAY
(LUNALILO FREEWAY) FAI PROJECT NO. 1 HI-1(5):24,
U3, MAY 1967 AND INTERSTATE HIGHWAY (LUNALILO
FREEWAY) FAI PROJECT NO. 1-H1-1(5):24, MARCH 1965.

ORIGINAL PLAN	SURVEY PLOTTED BY	DATE
NOTE BOOK	DESIGNED BY	
No.	QUANTITIES BY	
	CHECKED BY	



Daniel S. Miyasato
THIS WORK WAS PREPARED BY
ME OR UNDER MY SUPERVISION

STATE OF HAWAII
DEPARTMENT OF TRANSPORTATION
HIGHWAYS DIVISION

BORING LOGS

INTERSTATE ROUTE H-1, SEISMIC RETROFIT

KAPIOLANI INTERCHANGE, PHASE 2

FAIP NO. BR-H1-1(226)

SCALE: AS NOTED DATE: SEPT 2002
SHEET NO. C4 OF 21 SHEETS