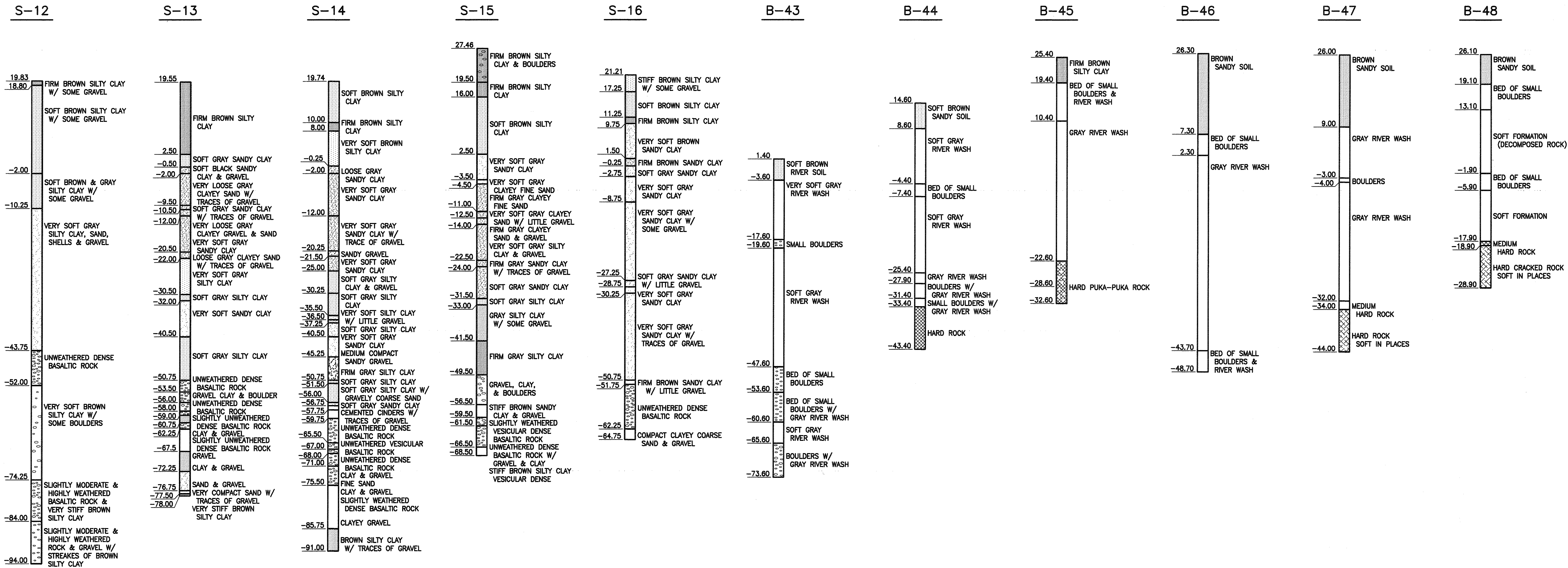


FED. ROAD DIST. NO.	STATE	FED. AID PROJ. NO.	FISCAL YEAR	SHEET NO.	TOTAL SHEETS
HAWAII	HAW.	BR-H1-1(226)	1999	6	38



BORING LOG DATA TAKEN FROM INTERSTATE HIGHWAY (LUNALILO FREEWAY) FAI PROJECT NO. 1 HI-1(5):24, U3, MAY 1967 AND INTERSTATE HIGHWAY (LUNALILO FREEWAY) FAI PROJECT NO.1-H1-1(5):24, MARCH 1965.

ORIGINAL PLAN	SURVEY PLOTTED BY	DATE
NOTE BOOK	DRAWN BY	
No.	DESIGNED BY	
	CHECKED BY	

STATE OF HAWAII  
DEPARTMENT OF TRANSPORTATION  
HIGHWAYS DIVISION

**BORING LOGS**

INTERSTATE ROUTE H-1, SEISMIC RETROFIT  
KAPIOLANI INTERCHANGE  
FAIP NO. BR-H1-1(226)

SCALE: AS NOTED      DATE: DECEMBER 1998

SHEET NO. C3 OF 11 SHEETS