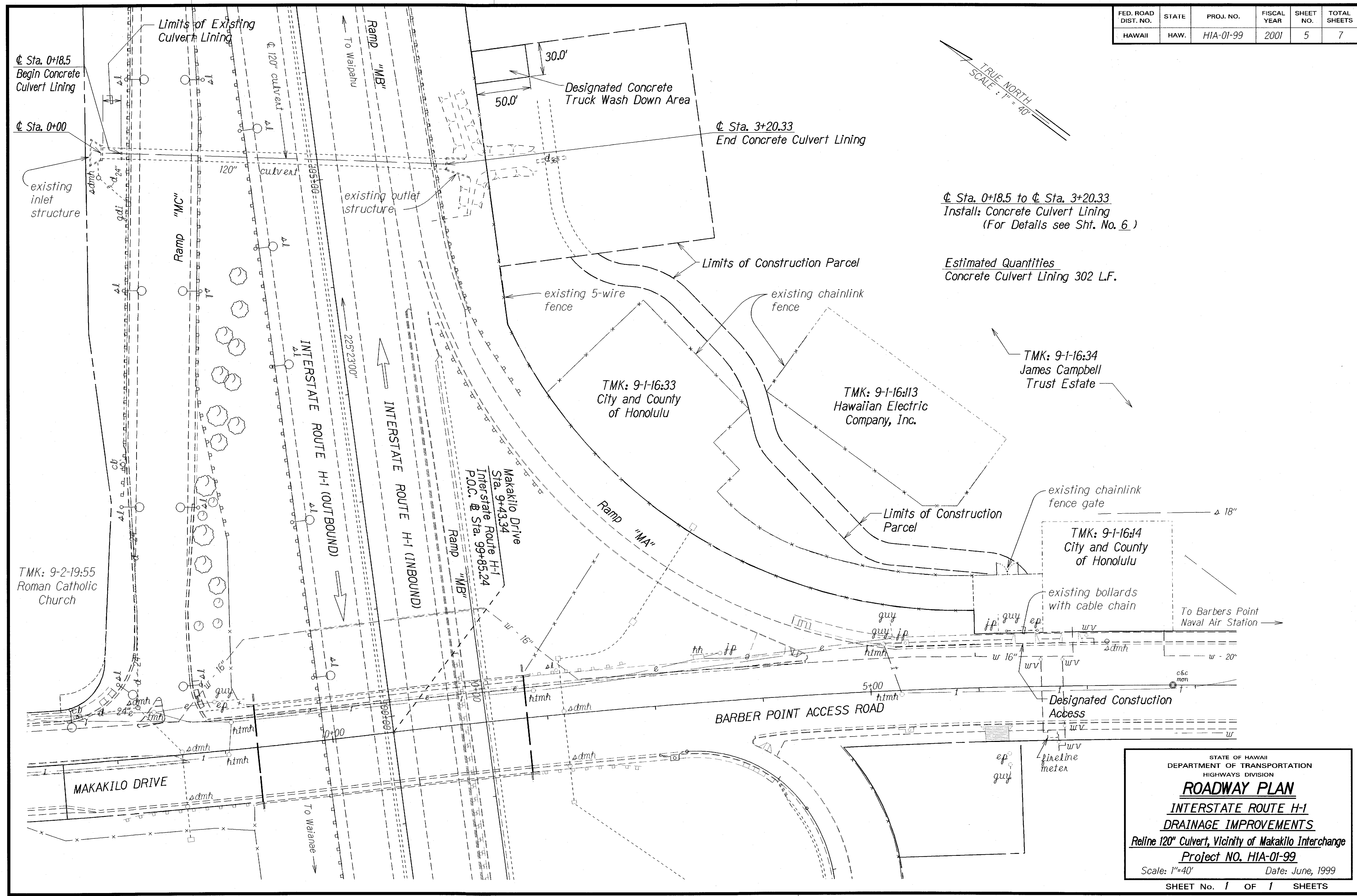


FED. ROAD DIST. NO.	STATE	PROJ. NO.	FISCAL YEAR	SHEET NO.	TOTAL SHEETS
HAWAII	HAW.	HIA-01-99	2001	5	7



☉ Sta. 0+18.5 to ☉ Sta. 3+20.33
 Install: Concrete Culvert Lining
 (For Details see Sht. No. 6.)

Estimated Quantities
 Concrete Culvert Lining 302 L.F.

STATE OF HAWAII
 DEPARTMENT OF TRANSPORTATION
 HIGHWAYS DIVISION
ROADWAY PLAN
INTERSTATE ROUTE H-1
DRAINAGE IMPROVEMENTS
 Realign 120" Culvert, Vicinity of Makakilo Interchange
 Project NO. HIA-01-99
 Scale: 1"=40' Date: June, 1999
 SHEET No. 1 OF 1 SHEETS

ORIGINAL PLAN DATE: 6/17/99
 SURVEY LOCATED BY: []
 DRAWN BY: []
 DESIGNED BY: []
 QUANTITIES BY: []
 CHECKED BY: []
 NOTE BOOK NO. 21000