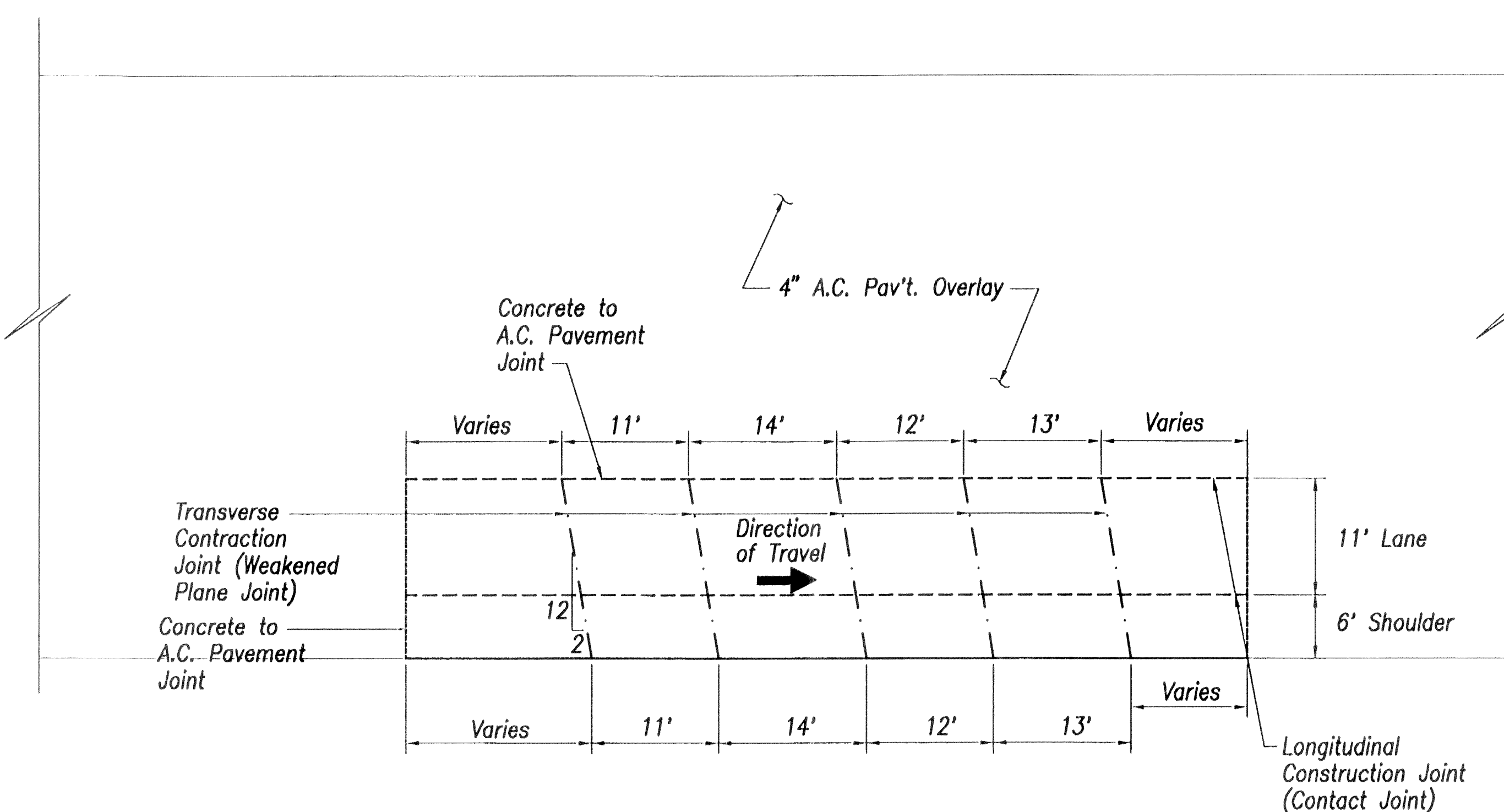


FED. ROAD DIST. NO.	STATE	FED. AID PROJ. NO.	FISCAL YEAR	SHEET NO.	TOTAL SHEETS
HAWAII	HAW.	IM-H1-1(232)	2000	25	84

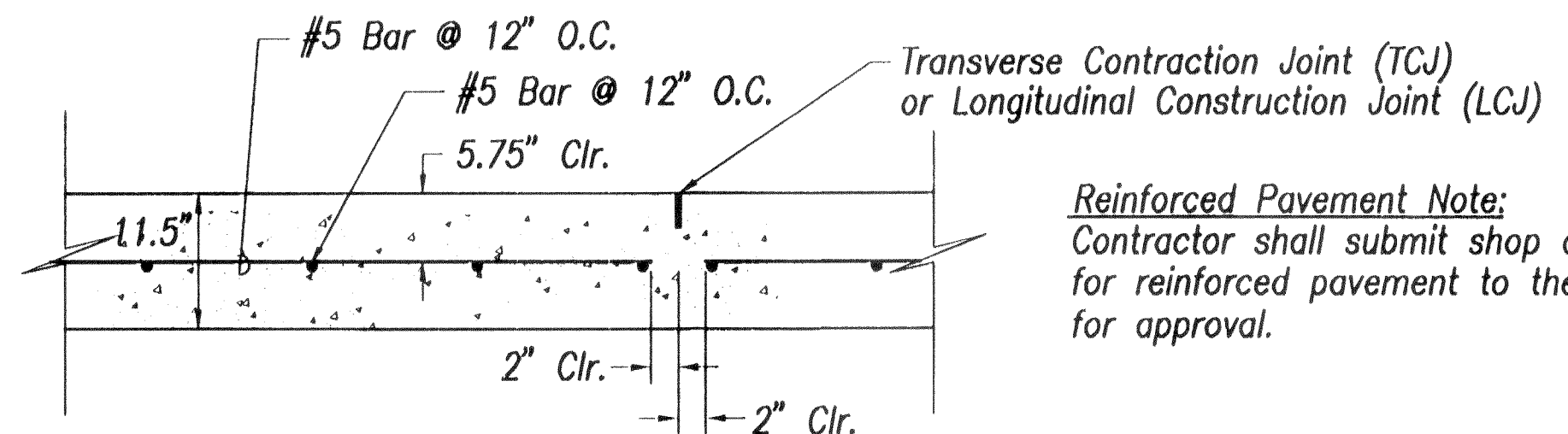
# GENERAL JOINTING NOTES

1. TRANSVERSE CONTRACTION JOINTS SHALL BE SAWED DIAGONALLY AS SHOWN, UNLESS OTHERWISE DIRECTED BY THE JOINTING PLANS. UNDER TYPICAL CONDITIONS, TRANSVERSE CONTRACTION JOINTS SHALL BE SKEWED COUNTERCLOCKWISE WITH AN OFFSET OF 2' FOR EVERY 12' OF LANE WIDTH FROM THE PERPENDICULAR TO THE EDGE OF TRAVELED WAY.
2. TRANSVERSE CONTRACTION JOINTS SHALL BE SPACED AT SUCCESSIVE INTERVALS OF 11', 14', 12' AND 13' IN THE DIRECTION OF TRAFFIC. REPEAT THIS SPACING FOR THE REMAINING JOINTS.
3. TRANSVERSE CONSTRUCTION JOINTS SHALL BE LOCATED AT THE NEAREST PLANNED TRANSVERSE CONTRACTION JOINT LOCATION AS SHOWN ON THE JOINTING PLANS.
4. THE LONGITUDINAL CONTRACTION JOINT DETAIL SHALL BE APPLICABLE AT THE INTERMEDIATE TRAFFIC LANE EDGE WHEN TWO OR MORE LANES ARE PAVED IN ONE CONTINUOUS POUR. THE DEFORMED TIE BARS SHALL BE PLACED TO THE DEPTH AS SHOWN ON THE DETAIL. ALL OTHER LONGITUDINAL JOINTS SHALL BE CONSTRUCTED IN ACCORDANCE WITH THE LONGITUDINAL CONSTRUCTION JOINT (CONTACT JOINT) DETAIL SHOWN ON THIS PLAN.
5. AT THE OUTER EDGE OF THE P.C.C. PAVEMENT, 1-1/2" RADIUS ROUNDING SHALL BE UTILIZED LONGITUDINALLY.
6. ALL STEEL SHALL CONFORM TO ASTM A615, GRADE 60. ALL STEEL SHALL BE EPOXY COATED. ALL STEEL THAT IS NOT COMPLETELY COVERED WITH EPOXY COATING OR WITH DAMAGED EPOXY COATING SHALL BE REPLACED AT NO COST TO THE STATE.

7. DOWEL BASKETS SHALL BE ANCHORED TO PREVENT MOVEMENT DURING THE CONCRETE POUR. THE CONTRACTOR SHALL SUBMIT AN ANCHORING PLAN TO THE ENGINEER FOR APPROVAL.
8. FOR TRAVEL WAY LANES, REINFORCE SLAB WHEN THE RATIO OF THE LENGTH OF ONE SIDE OF THE SLAB TO ANOTHER SIDE OF THE SLAB IS GREATER THAN 1.25 AND LESS THAN 0.8, OR THE SLAB HAS UNMATCHED JOINTS, OR THE SLAB IS TRIANGULAR IN SHAPE, OR THE SLAB HAS AT LEAST ONE SIDE LONGER THAN 15 FEET.
9. FOR SHOULDER, CURB AND GUTTER AREAS TIED TO THE TRAVEL LANE SLAB WITH TIE-BARS, ONLY TRIANGULAR SHAPED SLABS NEED TO BE REINFORCED.

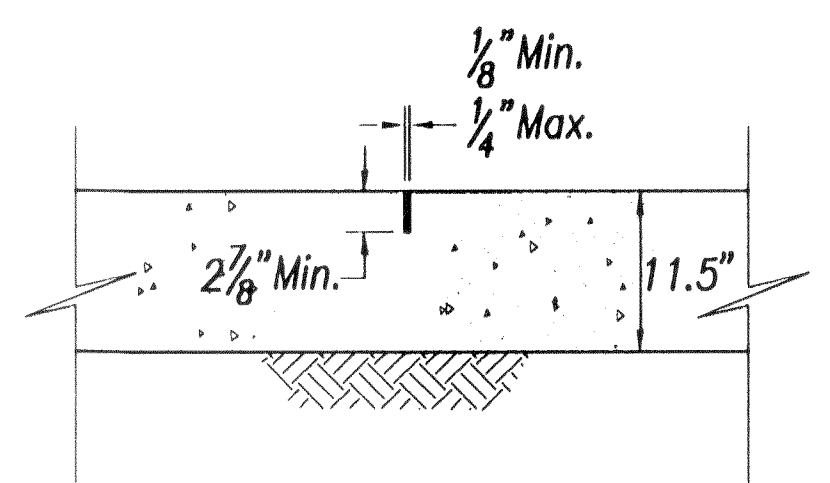


TYPICAL JOINT LAYOUT AND LOCATION PLAN  
SCALE: 1" = 10'

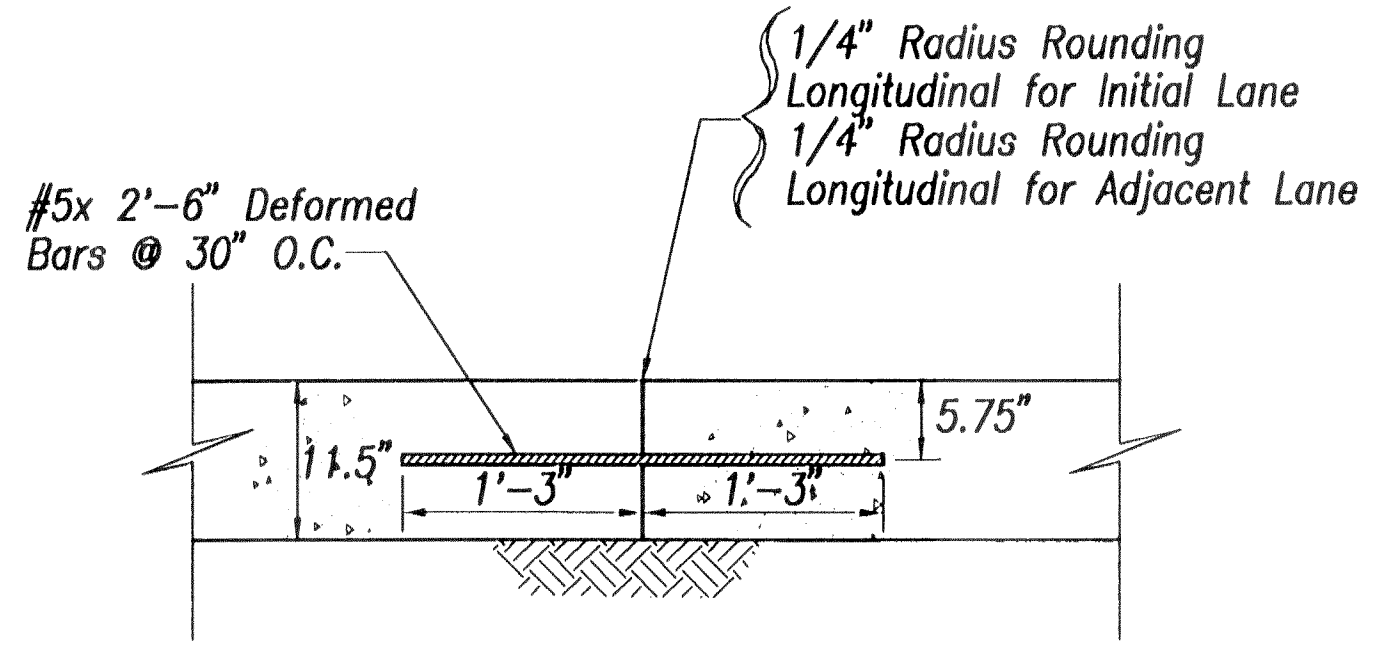


**Reinforced Pavement Note:**  
Contractor shall submit shop drawings for reinforced pavement to the engineer for approval.

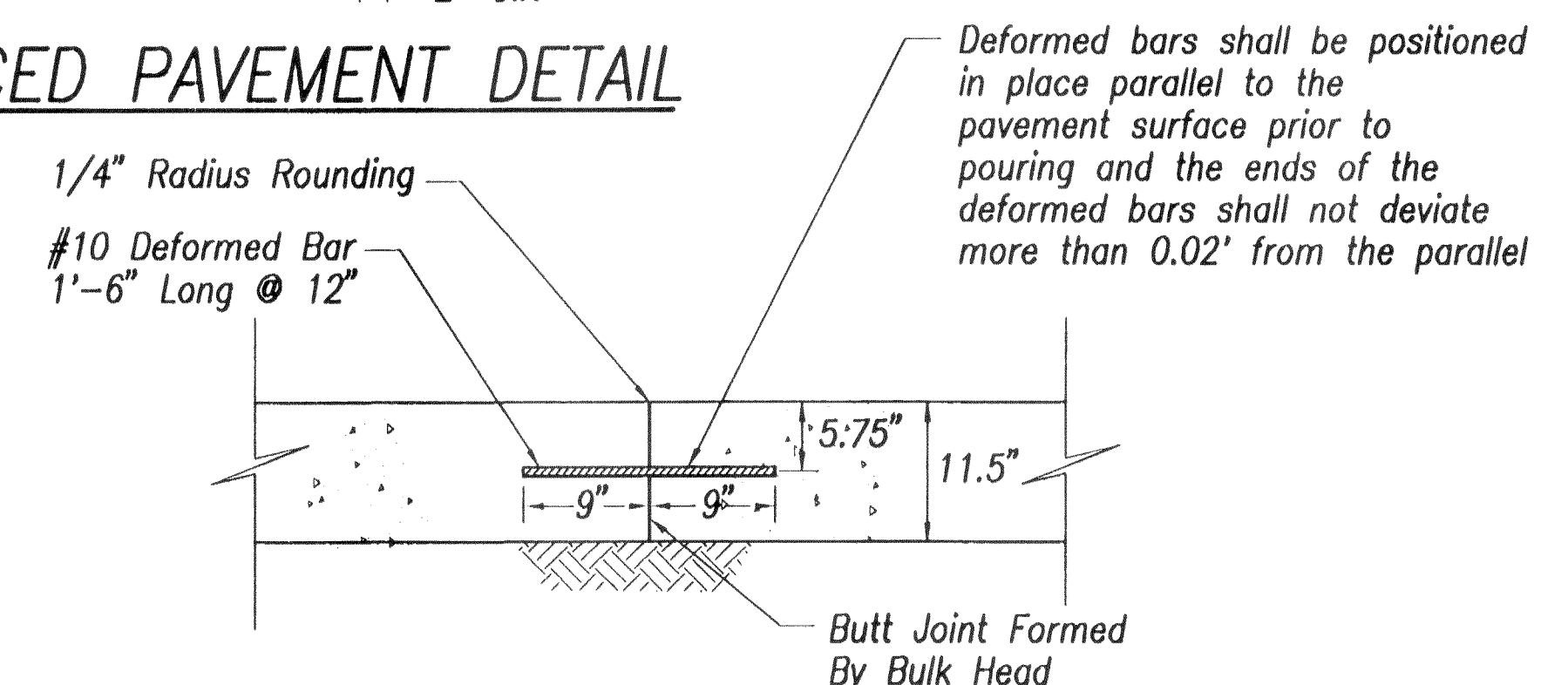
REINFORCED PAVEMENT DETAIL  
NOT TO SCALE



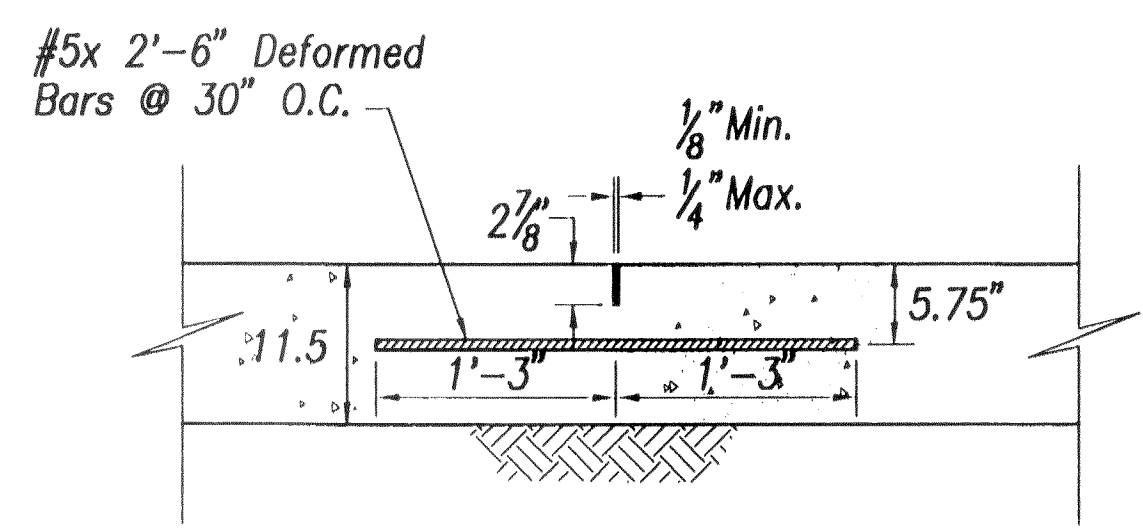
TRANSVERSE CONTRACTION JOINT (TCJ)  
(WEAKENED PLANE JOINT)  
NOT TO SCALE



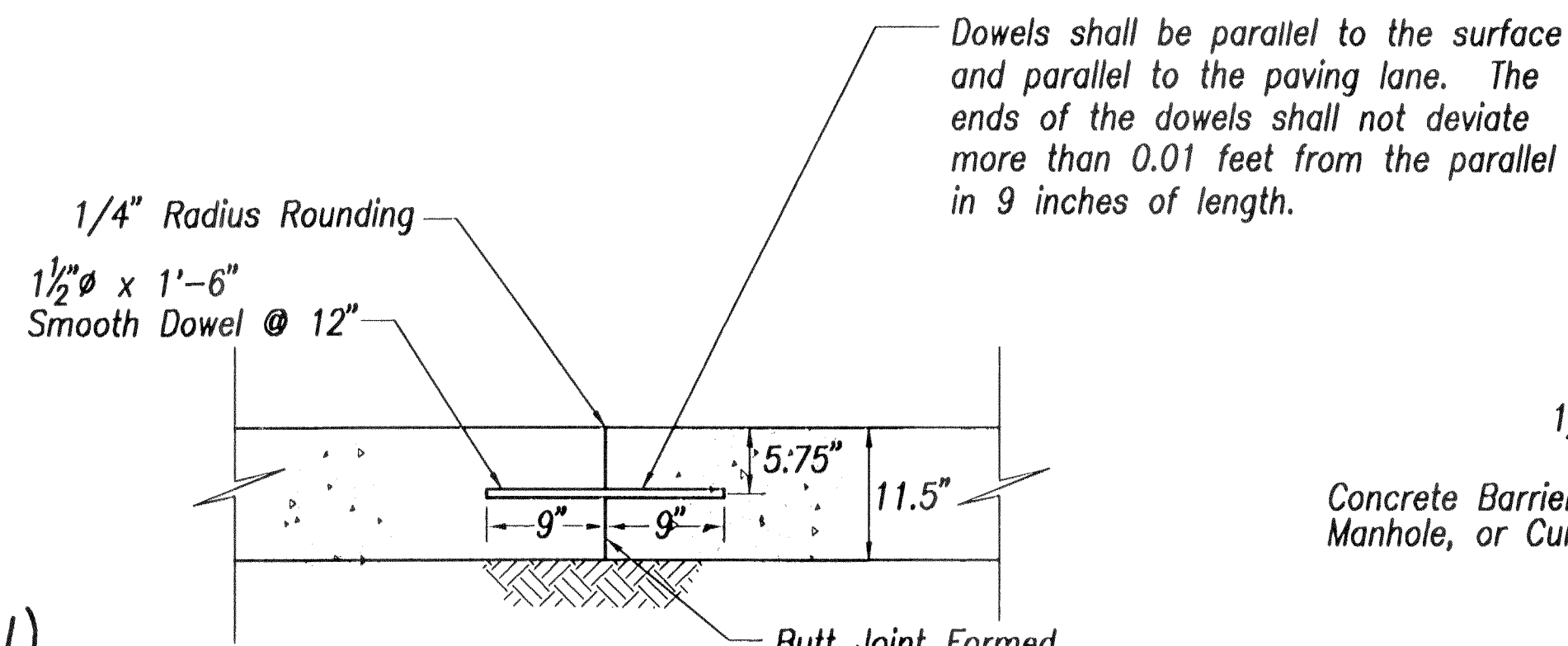
LONGITUDINAL CONSTRUCTION JOINT (LCJ)  
(CONTACT JOINT)  
NOT TO SCALE



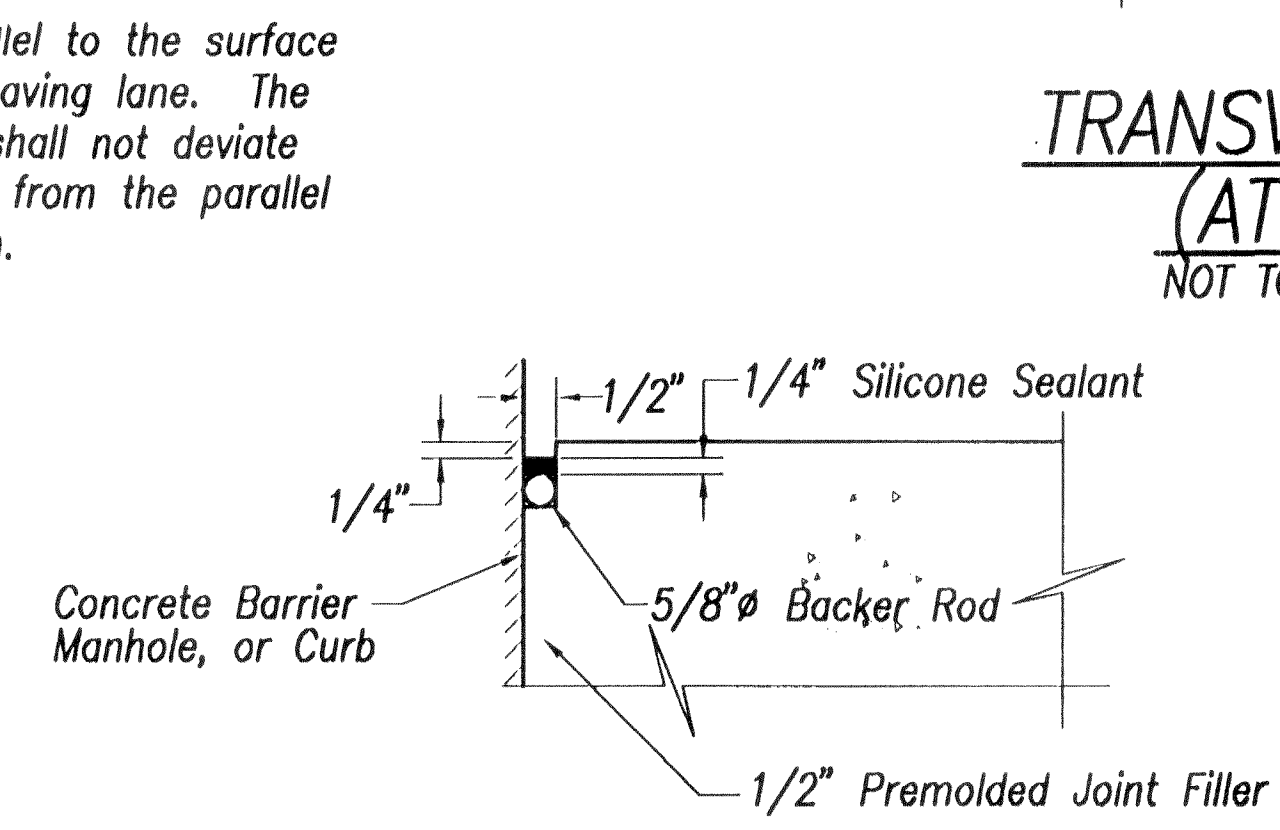
TRANSVERSE CONSTRUCTION JOINT (TCJ)  
(AT UNPLANNED JOINT LOCATION)  
NOT TO SCALE



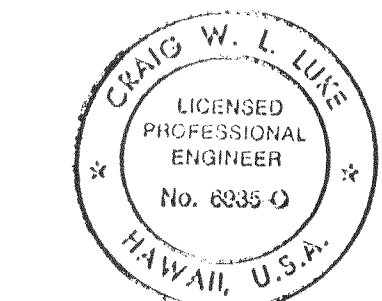
LONGITUDINAL CONTRACTION JOINT (LCJ)  
(WEAKENED PLANE JOINT)  
NOT TO SCALE



TRANSVERSE CONSTRUCTION JOINT (TCJ)  
(AT PLANNED JOINT LOCATION)  
NOT TO SCALE



EXPANSION JOINT (EJ)  
ISOLATION JOINT (IJ) DETAIL  
SCALE: 1/4" = 1'-0"



THIS WORK WAS PREPARED BY ME OR UNDER MY SUPERVISION.

SIGNATURE: [Signature] DATE: 4/28/00

STATE OF HAWAII  
DEPARTMENT OF TRANSPORTATION  
HIGHWAYS DIVISION

CONCRETE PAVEMENT DETAILS

INTERSTATE ROUTE H-1  
PUNAHOU ST. OFF-RAMP IMPROVEMENTS  
F.A.I. Proj. No. IM-H1-1(232)

Scale: As Shown      Date: 4/28/00

SHEET No. C-23 OF 36 SHEETS