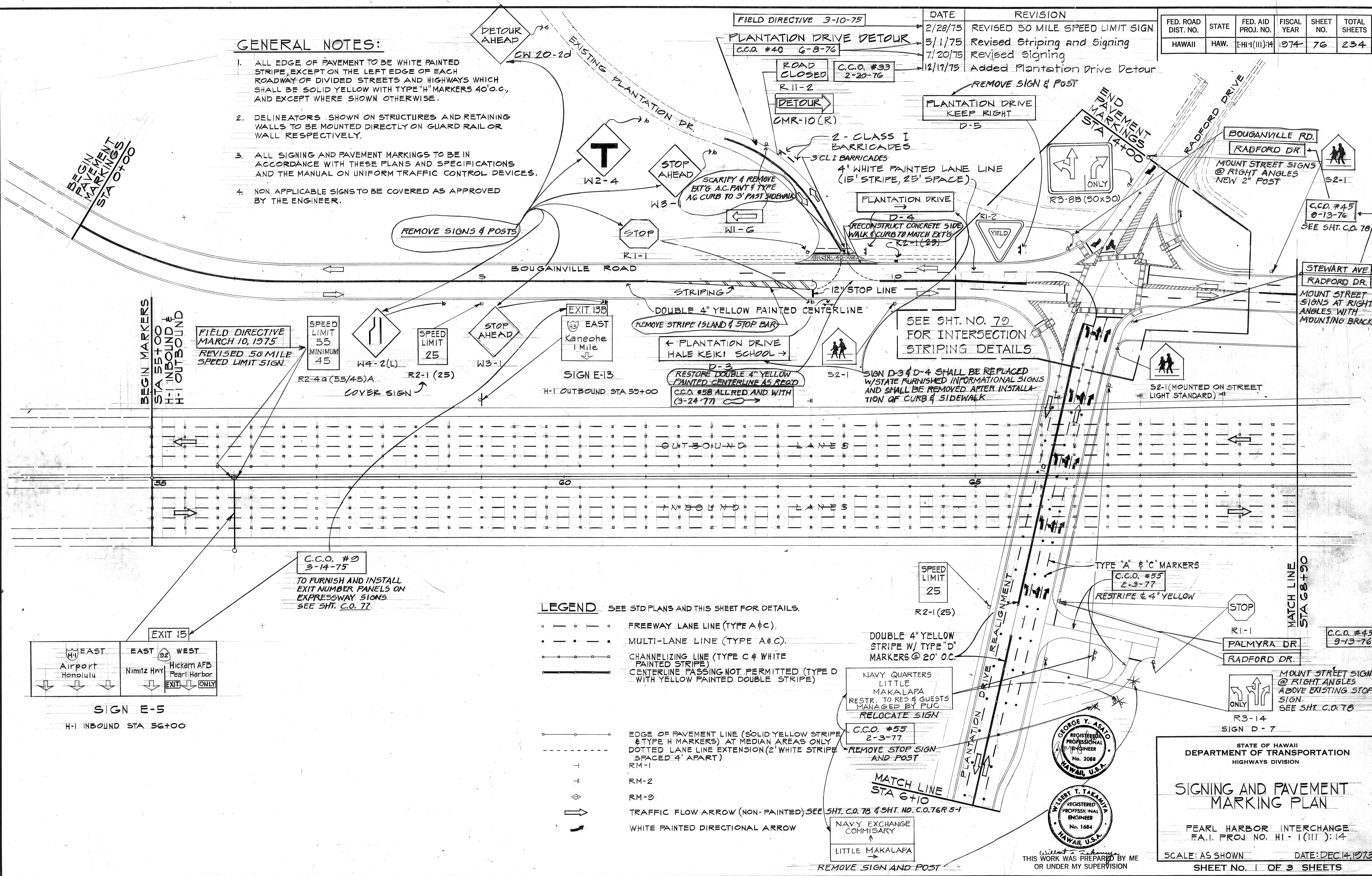


FED. ROAD DIST. NO.	STATE	FED. AID PROJ. NO.	FISCAL YEAR	SHEET NO.	TOTAL SHEETS
HAWAII	HAW.	EHI-1(III)-14	1974	76	234

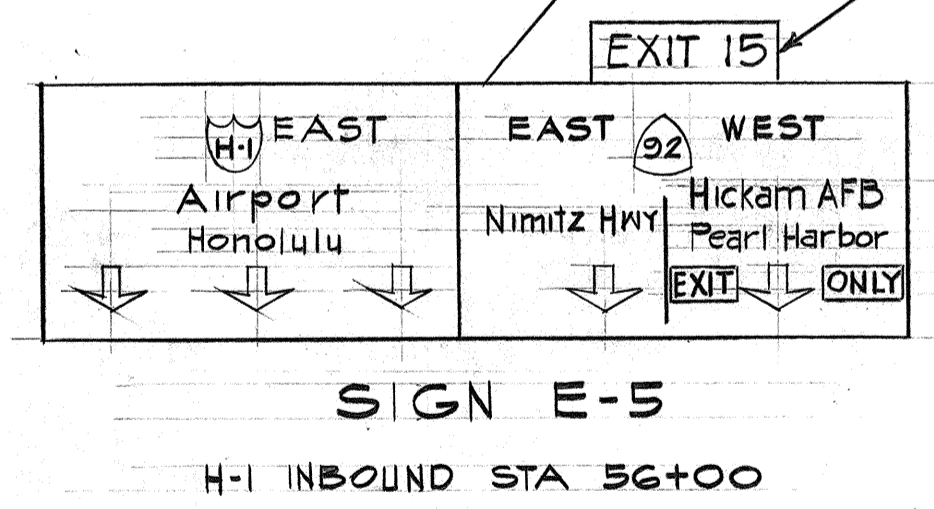
DATE	REVISION
2/28/75	REVISED 50 MILE SPEED LIMIT SIGN
5/1/75	REVISED STRIPING AND SIGNING
7/20/75	REVISED SIGNING
12/17/75	ADDED PLANTATION DRIVE DETOUR

**GENERAL NOTES:**

- ALL EDGE OF PAVEMENT TO BE WHITE PAINTED STRIPE, EXCEPT ON THE LEFT EDGE OF EACH ROADWAY OF DIVIDED STREETS AND HIGHWAYS WHICH SHALL BE SOLID YELLOW WITH TYPE "H" MARKERS 40' O.C., AND EXCEPT WHERE SHOWN OTHERWISE.
- DELINEATORS SHOWN ON STRUCTURES AND RETAINING WALLS TO BE MOUNTED DIRECTLY ON GUARD RAIL OR WALL RESPECTIVELY.
- ALL SIGNING AND PAVEMENT MARKINGS TO BE IN ACCORDANCE WITH THESE PLANS AND SPECIFICATIONS AND THE MANUAL ON UNIFORM TRAFFIC CONTROL DEVICES.
- NON APPLICABLE SIGNS TO BE COVERED AS APPROVED BY THE ENGINEER.

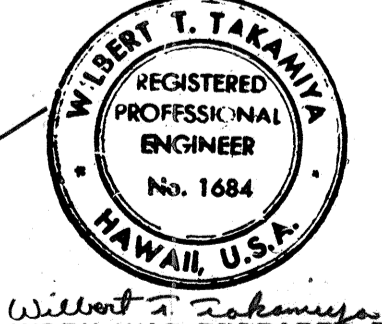
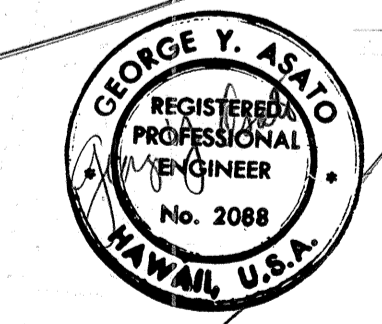


ORIGINAL PLAN	DATE
DESIGNED BY	
TRACED BY	
NOTE BOOK	
QUANTITIES BY	
CHECKED BY	
No.	



**LEGEND** SEE STD PLANS AND THIS SHEET FOR DETAILS.

- — — — — FREEWAY LANE LINE (TYPE A & C).
- · — · — · — MULTI-LANE LINE (TYPE A & C).
- — — — — CHANNELIZING LINE (TYPE C & WHITE PAINTED STRIPE)
- — — — — CENTERLINE PASSING NOT PERMITTED (TYPE D WITH YELLOW PAINTED DOUBLE STRIPE)
- — — — — EDGE OF PAVEMENT LINE (SOLID YELLOW STRIPE & TYPE H MARKERS) AT MEDIAN AREAS ONLY
- · — · — · — DOTTED LANE LINE EXTENSION (2' WHITE STRIPE SPACED 4' APART)
- RM-1
- RM-2
- RM-3
- TRAFFIC FLOW ARROW (NON-PAINTED) SEE SHT. C.O. 78 & SHT. NO. C.O. 76R 5-1
- ↔ WHITE PAINTED DIRECTIONAL ARROW



STATE OF HAWAII  
DEPARTMENT OF TRANSPORTATION  
HIGHWAYS DIVISION

**SIGNING AND PAVEMENT MARKING PLAN**

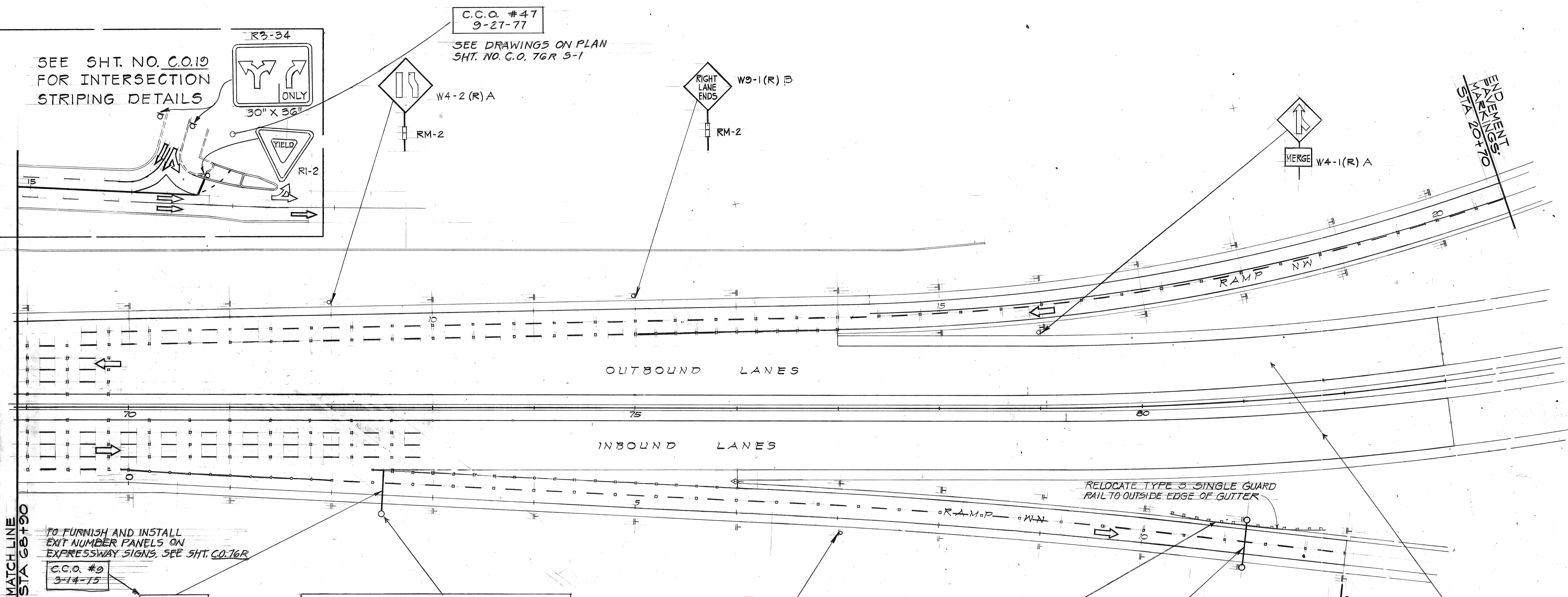
PEARL HARBOR INTERCHANGE  
F.A.I. PROJ. NO. HI-1(III)-14

SCALE: AS SHOWN DATE: DEC. 14, 1973  
SHEET No. 1 OF 3 SHEETS

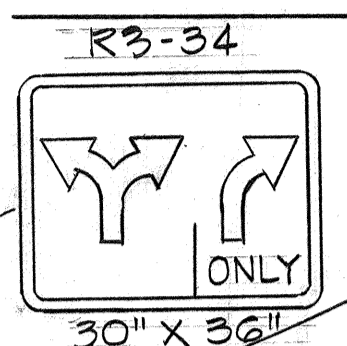


FED. ROAD DIST. NO.	STATE	FED. AID PROJ. NO.	FISCAL YEAR	SHEET NO.	TOTAL SHEETS
HAWAII	HAW.	HI-1(III)14	1974	77	234

NORTH  
SCALE: 1"=30'

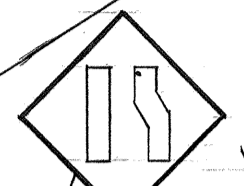


SEE SHT. NO. C.O.19 FOR INTERSECTION STRIPING DETAILS



C.C.O. #47  
9-27-77

SEE DRAWINGS ON PLAN SHT. NO. C.O. 76R 5-1



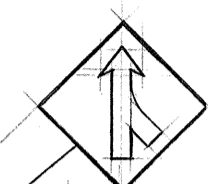
W4-2(R)A

RM-2



W9-1(R)B

RM-2



W4-1(R)A

PAVEMENT MARKINGS STA 20+70

OUTBOUND LANES

INBOUND LANES

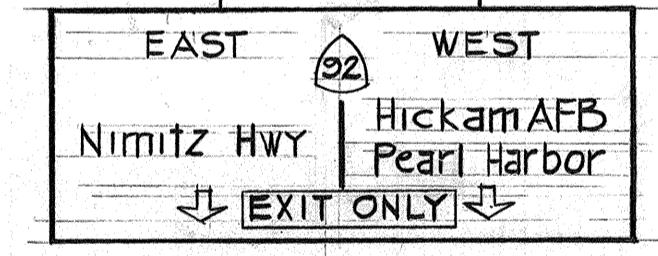
RELOCATE TYPE 3 SINGLE GUARD RAIL TO OUTSIDE EDGE OF GUTTER

MATCH LINE STA 68+90

TO FURNISH AND INSTALL EXIT NUMBER PANELS ON EXPRESSWAY SIGNS. SEE SHT. C.O.76R

C.C.O. #9  
3-14-75

EXIT 15



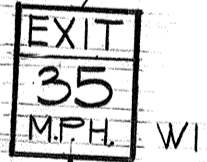
SIGN E-6

RAMP WN STA 2+50

FIELD DIRECTIVE JUNE 14, 1976

SEE DRAWING ON PLAN SHT. NO. 83

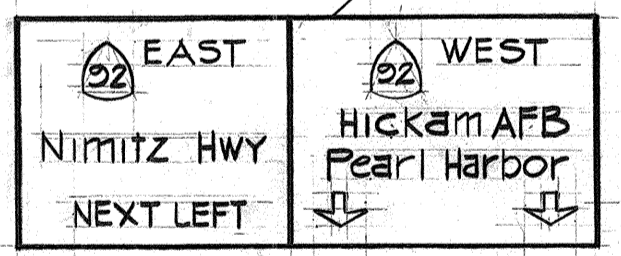
FIELD REVISION FOR THE CONFLICT BETWEEN THE 60-INCH CMP DRAINLINE AND SIGN E-6 FOOTING AT RAMP WN STA. 2+50 3/8 RT.



W13-2(35)

RM-2

C.C.O. #51  
11-17-76



SIGN E-1

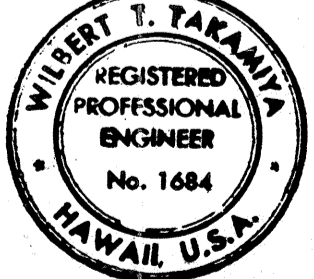
RAMP WN STA 11+00

C.C.O. #40  
6-8-76

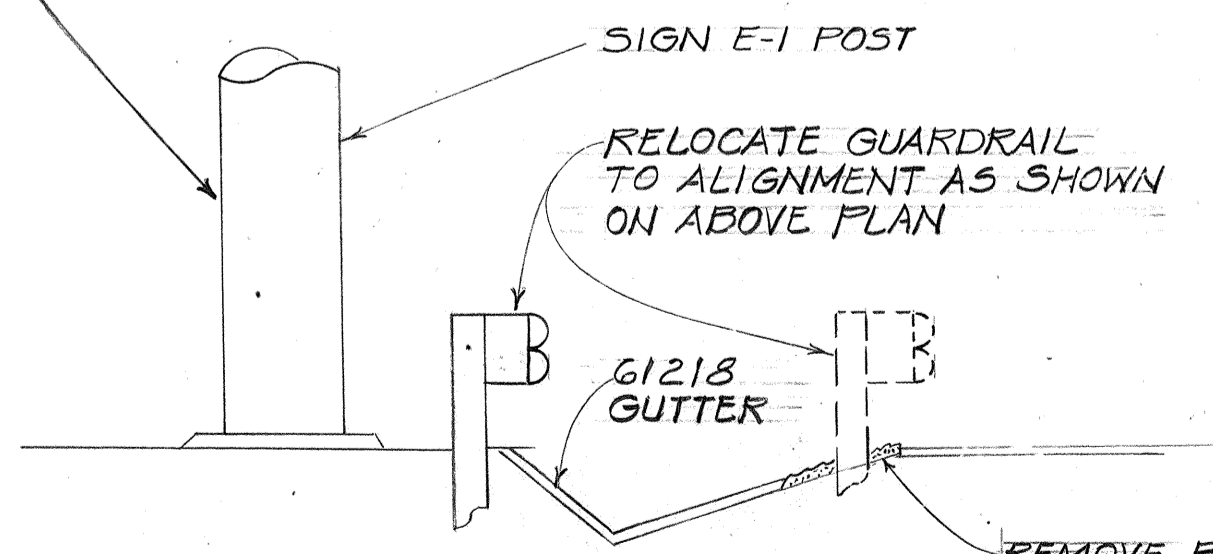
C.C.O. #29  
12-19-75

SEE PLAN SHTS. C.O.G., C.O.78

11/14/75	Deleted Freeway Raised Pav't Markers and Edge Strip Outb. Sta. 70+00 to 83+00 Inb. Sta. 73+00 to 83+00
7/20/75	Revised Signing
5/1/75	Revised Striping and Signing
DATE	REVISIONS



TO RELOCATE GUARD RAIL FROM THE EDGE OF THE SHOULDER TO THE BACK EDGE OF THE 61218 GUTTER. SEE DETAIL DRAWING BELOW.



TYPICAL SECTION NTS

THIS WORK WAS PREPARED BY ME OR UNDER MY SUPERVISION

STATE OF HAWAII  
DEPARTMENT OF TRANSPORTATION  
HIGHWAYS DIVISION

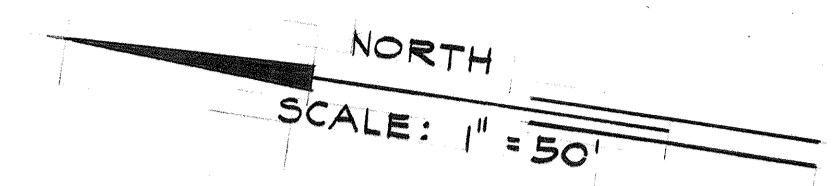
**SIGNING AND PAVEMENT MARKING PLAN**

PEARL HARBOR INTERCHANGE  
F.A.I. PROJ. NO. HI-1(III)14

SCALE: AS SHOWN DATE: DEC. 14, 1973  
SHEET NO. 2 OF 3 SHEETS

SURVEY PLOTTED BY	DATE
ORIGINAL PLAN	
DRAWN BY	
TRACED BY	
DESIGNED BY	
CHECKED BY	
NOTE BOOK	
No.	

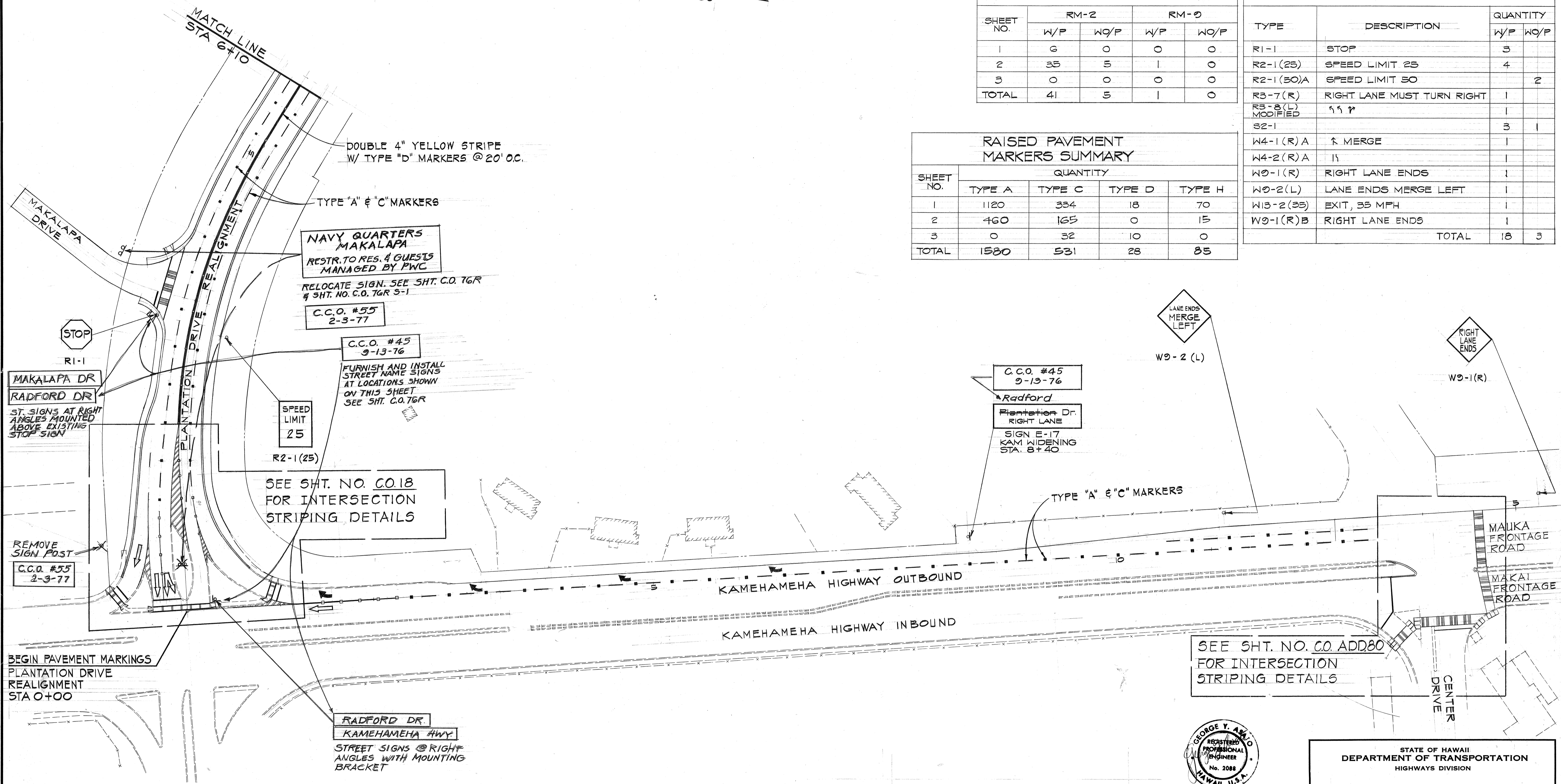
FED. ROAD DIST. NO.	STATE	FED. AID PROJ. NO.	FISCAL YEAR	SHEET NO.	TOTAL SHEETS
HAWAII	HAW.	[HI-111]:14	1974	78	234



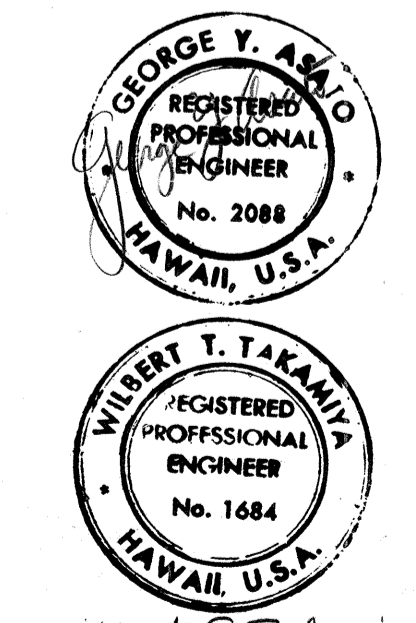
SHEET NO.	RM-2		RM-9	
	W/P	WO/P	W/P	WO/P
1	6	0	0	0
2	35	5	1	0
3	0	0	0	0
TOTAL	41	5	1	0

TYPE	DESCRIPTION	QUANTITY	
		W/P	WO/P
R1-1	STOP	3	
R2-1 (25)	SPEED LIMIT 25	4	
R2-1 (30)A	SPEED LIMIT 30		2
R3-7 (R)	RIGHT LANE MUST TURN RIGHT	1	
R3-8 (L) MODIFIED	SS P	1	
S2-1		3	1
W4-1 (R) A	↑ MERGE	1	
W4-2 (R) A	IS	1	
W9-1 (R)	RIGHT LANE ENDS	1	
W9-2 (L)	LANE ENDS MERGE LEFT	1	
W13-2 (35)	EXIT, 35 MPH	1	
W9-1 (R) B	RIGHT LANE ENDS	1	
TOTAL		18	3

SHEET NO.	QUANTITY			
	TYPE A	TYPE C	TYPE D	TYPE H
1	1120	334	18	70
2	460	165	0	15
3	0	32	10	0
TOTAL	1580	531	28	85



DATE	DESCRIPTION
3/19/76	DELETE MIDWAY DRIVE CUL-DE-SAC
11/14/75	REVISED RAISED PAVEMENT MARKERS SUMMARY
5/1/75	Revised Striping & Sign Summary
1/28/75	ADDED 10 PEDESTRIAN DROP CURBING



THIS WORK WAS PREPARED BY ME OR UNDER MY SUPERVISION

STATE OF HAWAII  
DEPARTMENT OF TRANSPORTATION  
HIGHWAYS DIVISION

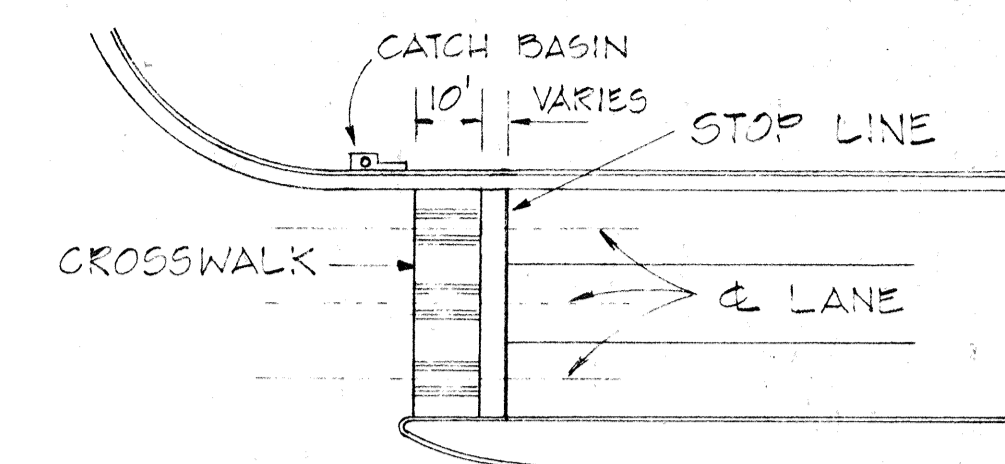
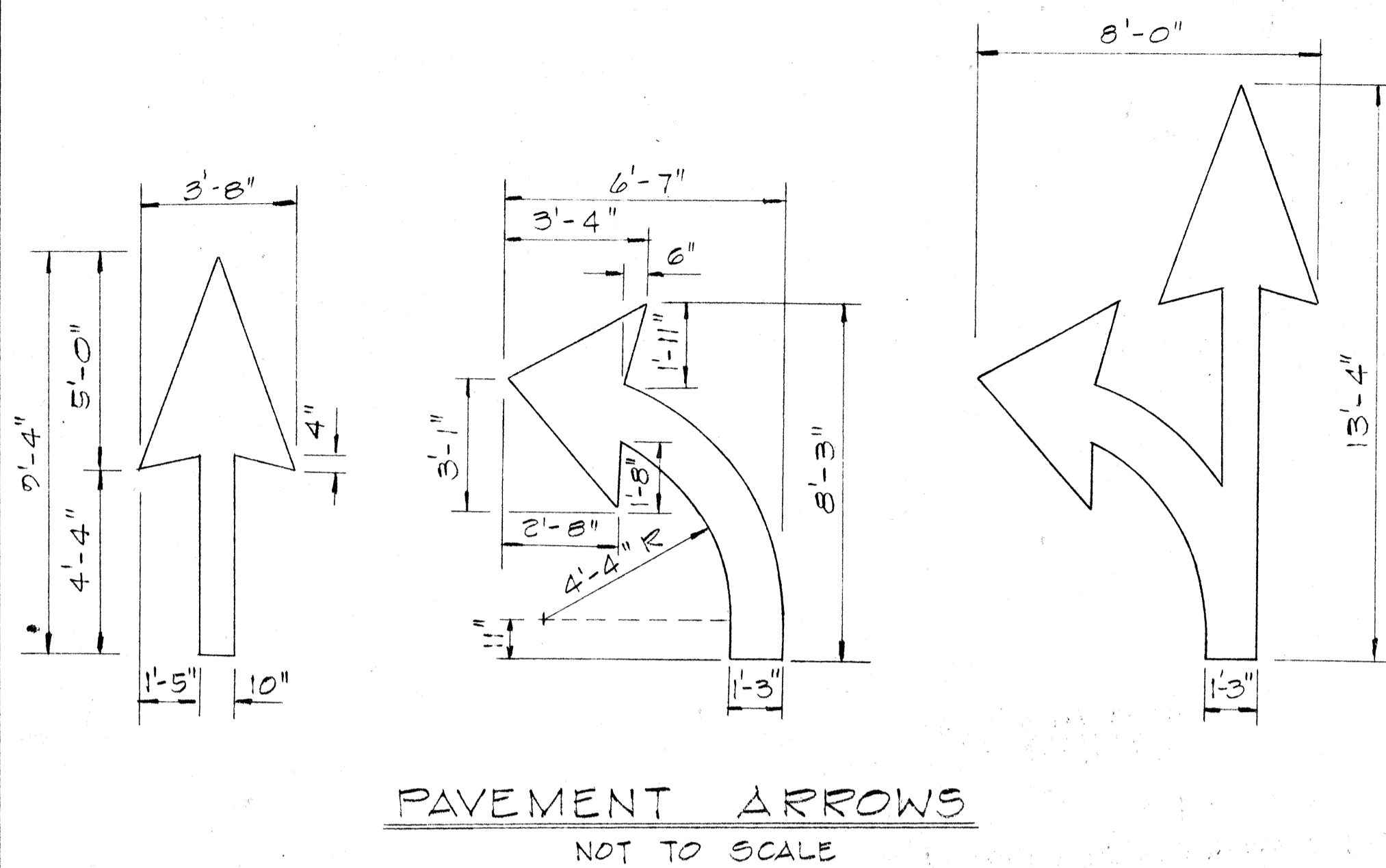
**SIGNING AND PAVEMENT MARKING PLAN**

PEARL HARBOR INTERCHANGE  
F.A.I. PROJ. NO. I-HI-1(111):14

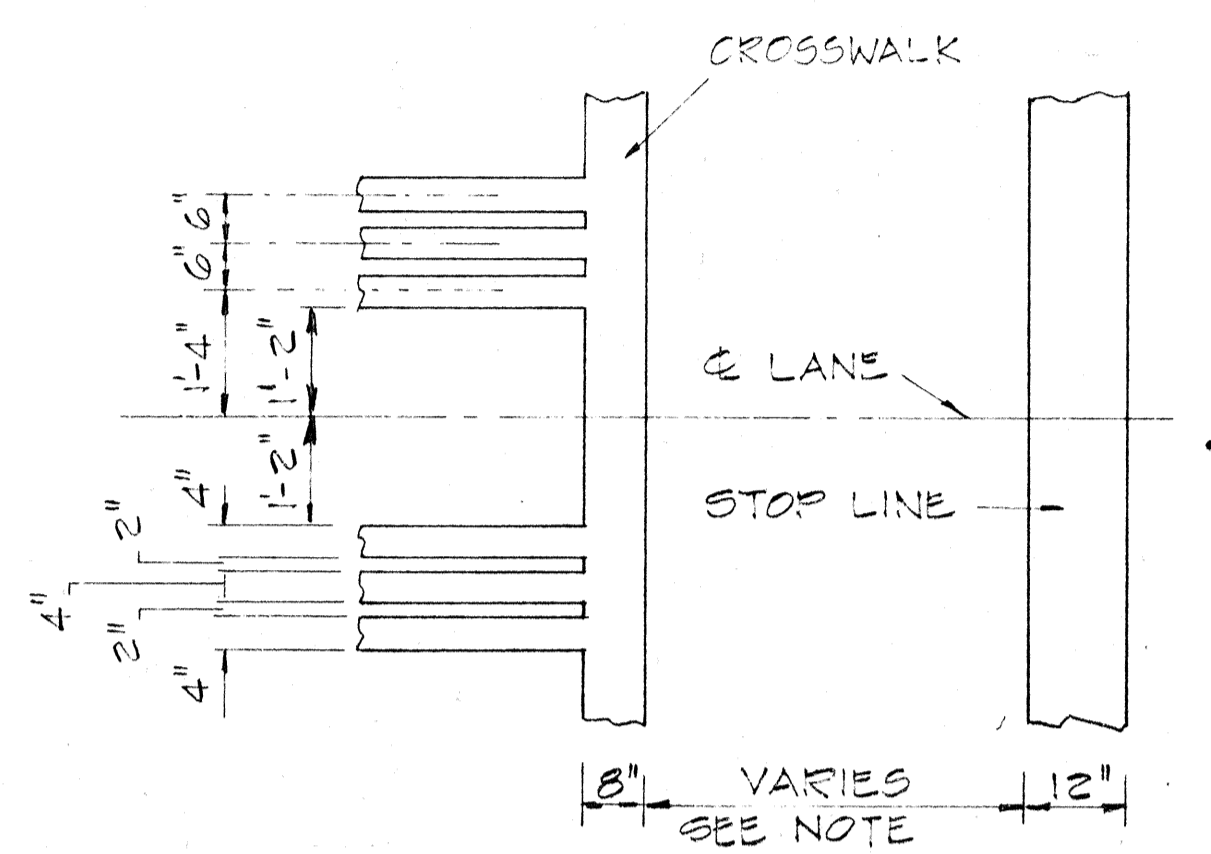
Scale: As Shown Date: DEC. 14, 1973  
SHEET NO. 3 OF 3 SHEETS

DATE	
SURVEY PLOTTED BY	
DRAWN BY	
DESIGNED BY	
NOTE BOOK	
QUANTITIES BY	
CHECKED BY	
No.	

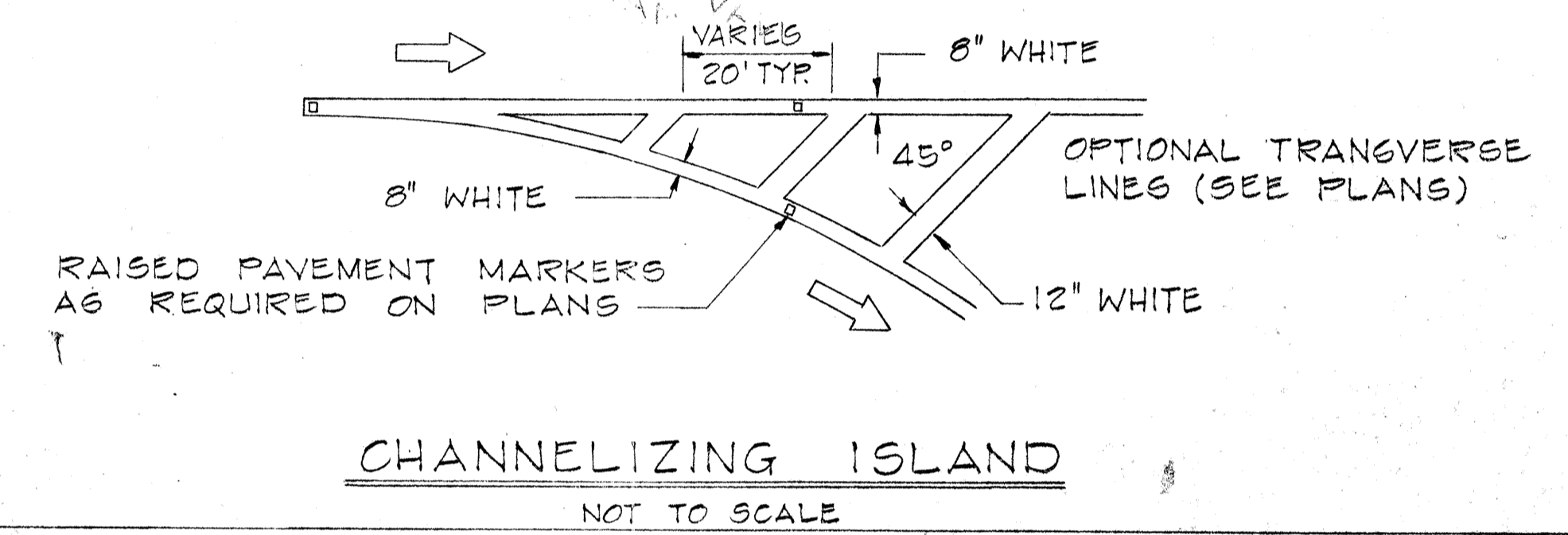
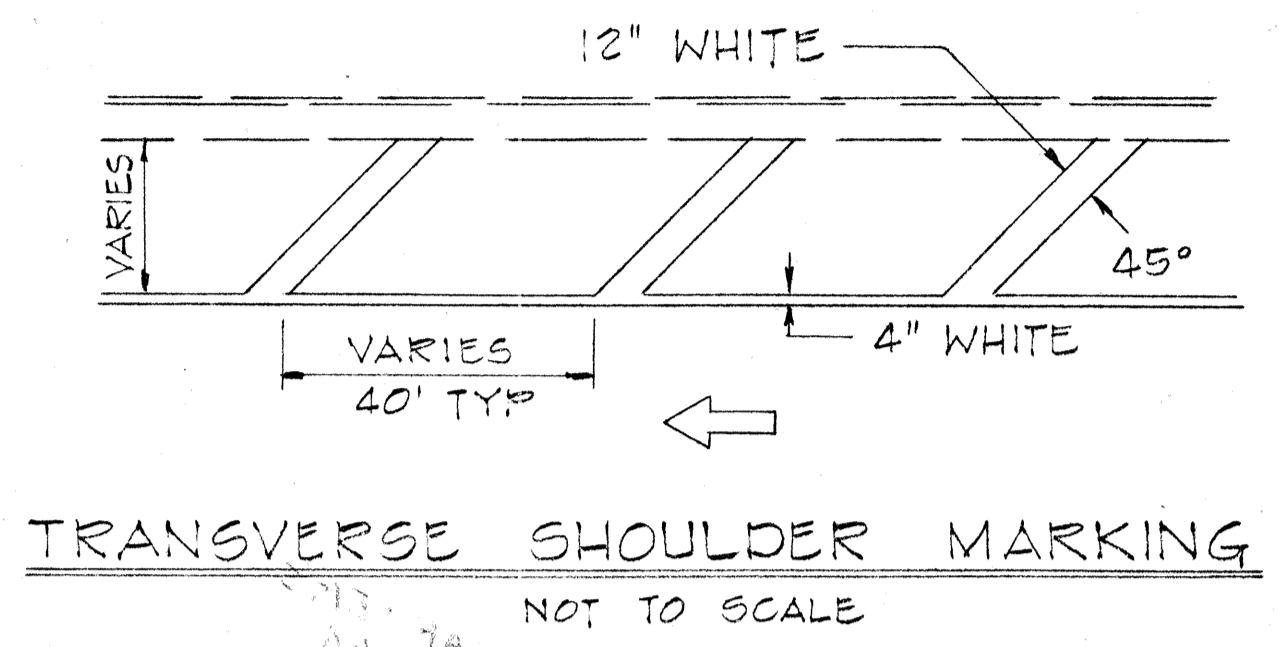
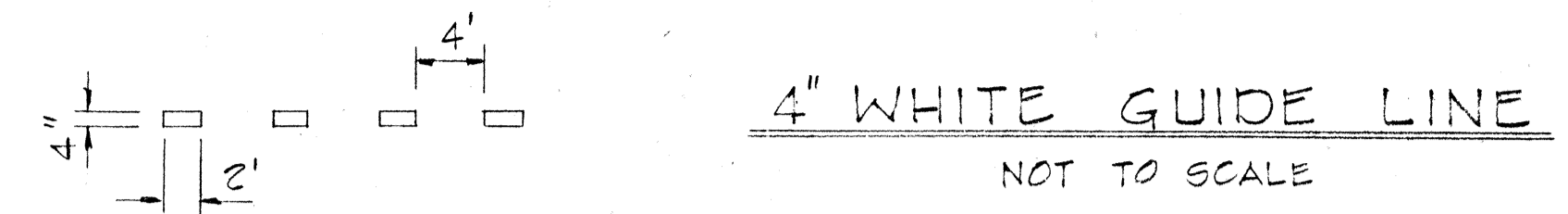
FED. ROAD DIST. NO.	STATE	FED. AID PROJ. NO.	FISCAL YEAR	SHEET NO.	TOTAL SHEETS
HAWAII	HAW.	I-HI-1(III):14	1975	0785-1	234



NOTE: SET ALL CROSSWALKS AWAY FROM CATCH BASINS



NOTE: STOP LINES AT UNSIGNALIZED INTERSECTIONS AND AT MIDDLEBLOCK CROSSWALKS SHALL BE PLACED A MINIMUM OF 10 FEET BEFORE THE CROSSWALK, HOWEVER A DISTANCE OF 20 FEET IS PREFERABLE. STOP LINES AT SIGNALIZED INTERSECTIONS SHALL BE PLACED A MINIMUM OF FOUR FEET BEFORE THE CROSSWALK.



**GENERAL NOTES - PAVEMENT MARKINGS**

1. Pavement Markings shall conform to the "Manual on Uniform Traffic Control Devices for Streets and Highways," 1971, and as shown on the plans.
2. Layout of pavement markings and striping shall be done by the Contractor. Contractor shall check layout of markers & striping with the Engineer prior to performing work.
3. For additional pavement marking details see plan sht #DT 300.

C.C.O. #40 THIS ENTIRE SHT.  
6-8-76

STATE OF HAWAII  
DEPARTMENT OF TRANSPORTATION  
HIGHWAYS DIVISION

**TYPICAL DETAILS OF PAVEMENT MARKINGS**

PEARL HARBOR INTERCHANGE  
F.A.I. Proj. No. I-HI-1(III):14

SCALE: AS SHOWN DATE: May, 1975

SHEET NO. 3A OF 3 SHEETS

C.O. 78 S-1

SURVEY PLOTTED BY	DATE
DRAWN BY	
DESIGNED BY	
QUANTITIES BY	
CHECKED BY	
ORIGINAL PLAN No.	