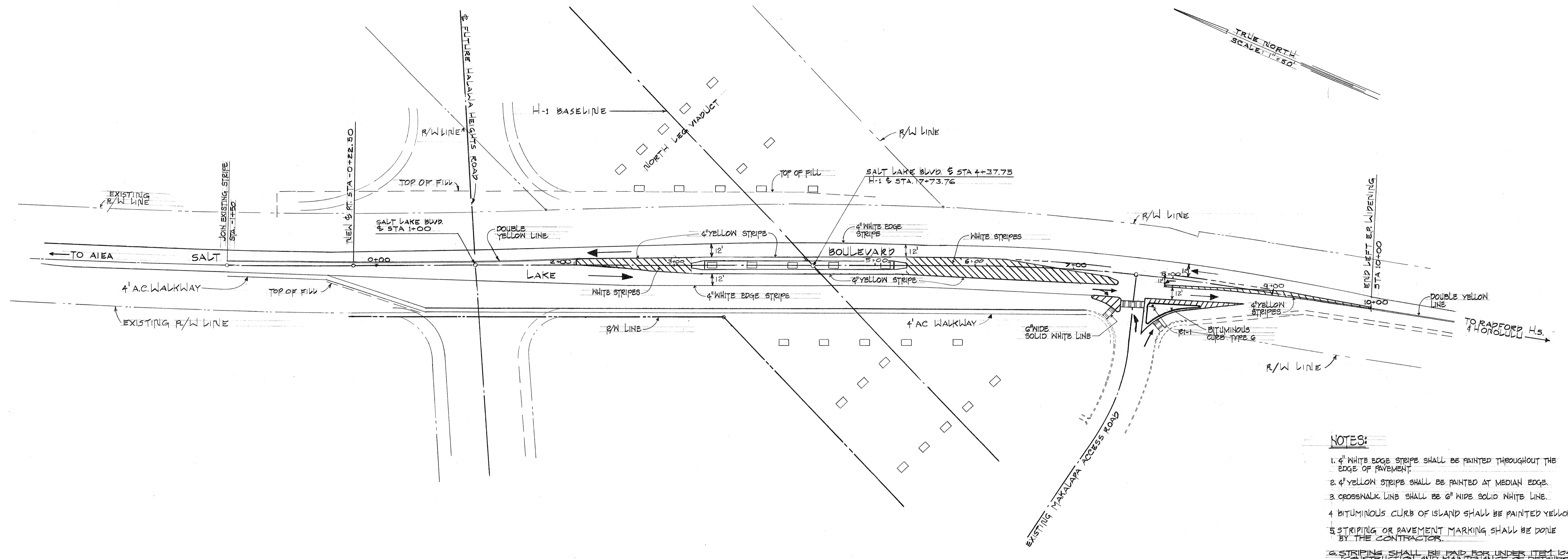


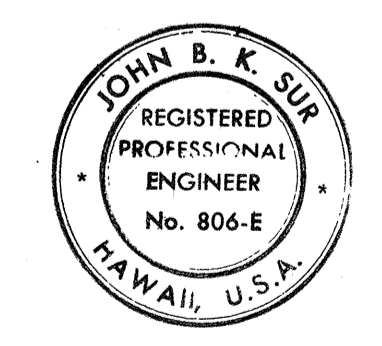
FED. ROAD DIST. NO.	STATE	FED. AID PROJ. NO.	FISCAL YEAR	SHEET NO.	TOTAL SHEETS
HAWAII	HAW.	I-HI-1(104):13	1972	29	103



TRUE NORTH
SCALE: 1" = 50'

- NOTES:**
1. 4" WHITE EDGE STRIPE SHALL BE PAINTED THROUGHOUT THE EDGE OF PAVEMENT.
 2. 4" YELLOW STRIPE SHALL BE PAINTED AT MEDIAN EDGE.
 3. CROSSWALK LINE SHALL BE 6" WIDE SOLID WHITE LINE.
 4. BITUMINOUS CURB OF ISLAND SHALL BE PAINTED YELLOW.
 5. STRIPING OR PAVEMENT MARKING SHALL BE DONE BY THE CONTRACTOR.
 6. STRIPING SHALL BE PAID FOR UNDER ITEM 104.04 CONSTRUCTION AND MAINTENANCE OF DETAILS.

SURVEY PLOTTED BY	DATE
PLAN	
TRACKED BY	
DESIGNED BY	
QUANTITIES BY	
CHECKED BY	
ORIGINAL	
PLAN	
NOTE BOOK	
No.	



THIS WORK WAS PREPARED BY ME OR UNDER MY SUPERVISION.
John B. K. Sir

STATE OF HAWAII
DEPARTMENT OF TRANSPORTATION
HIGHWAYS DIVISION

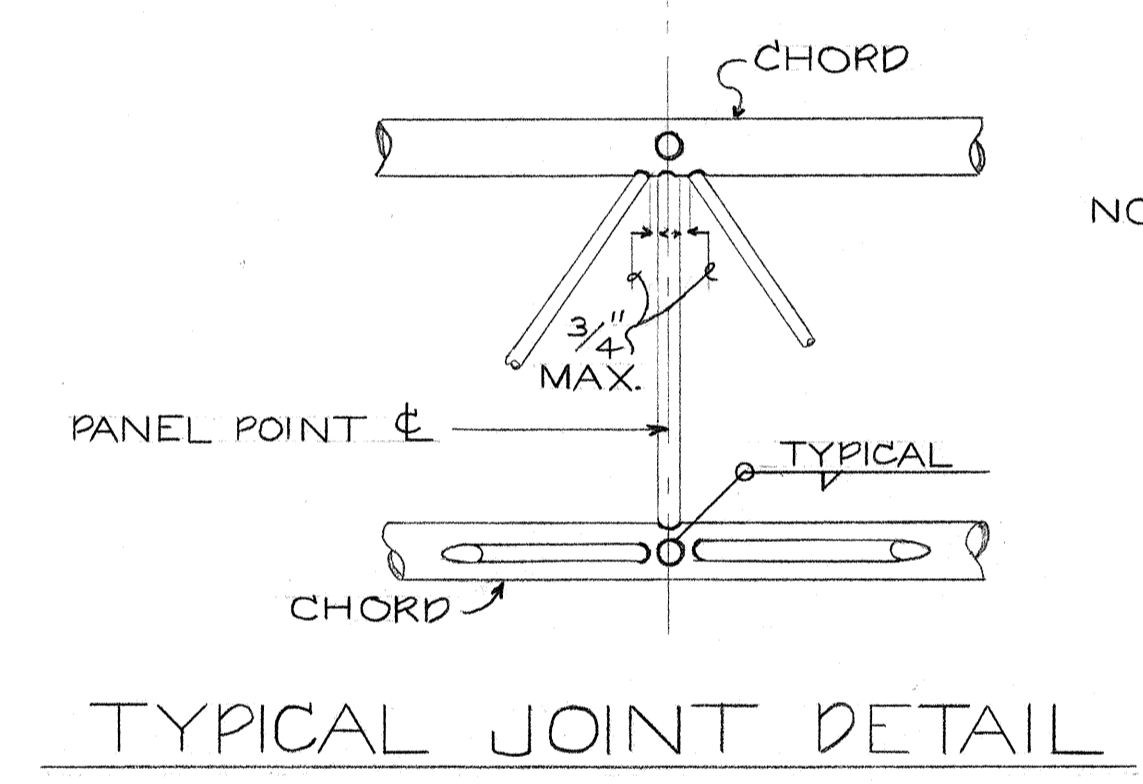
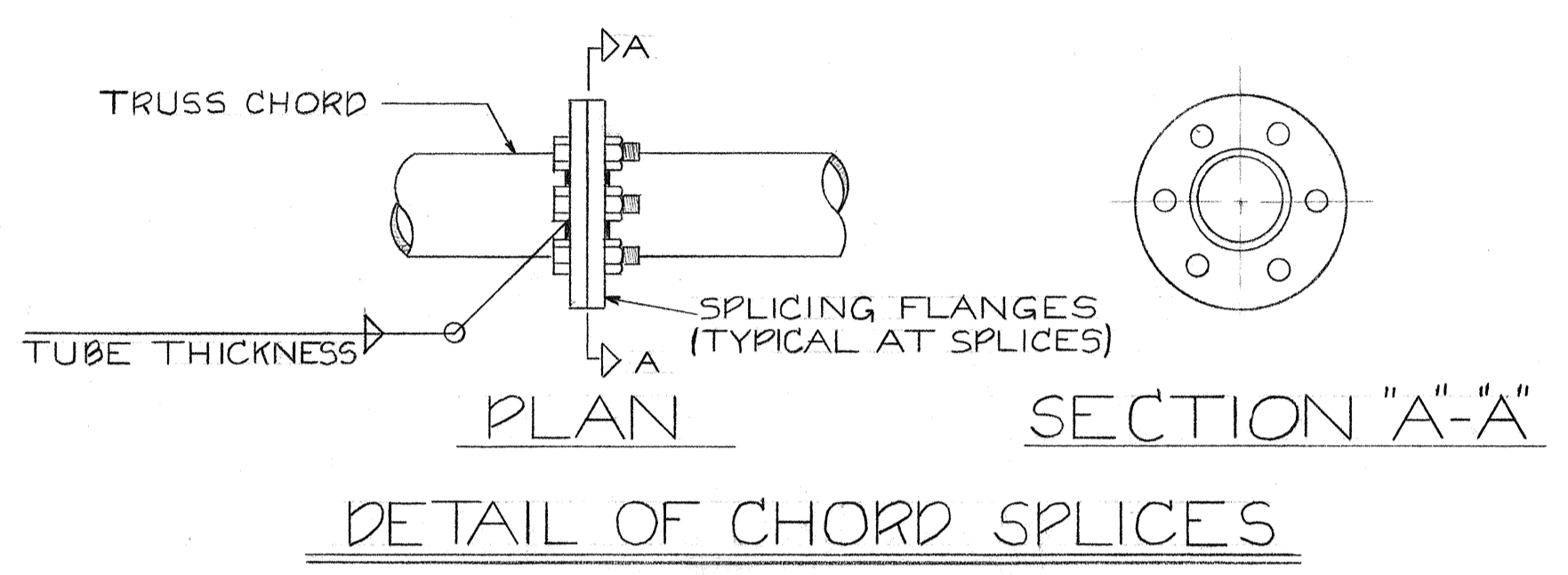
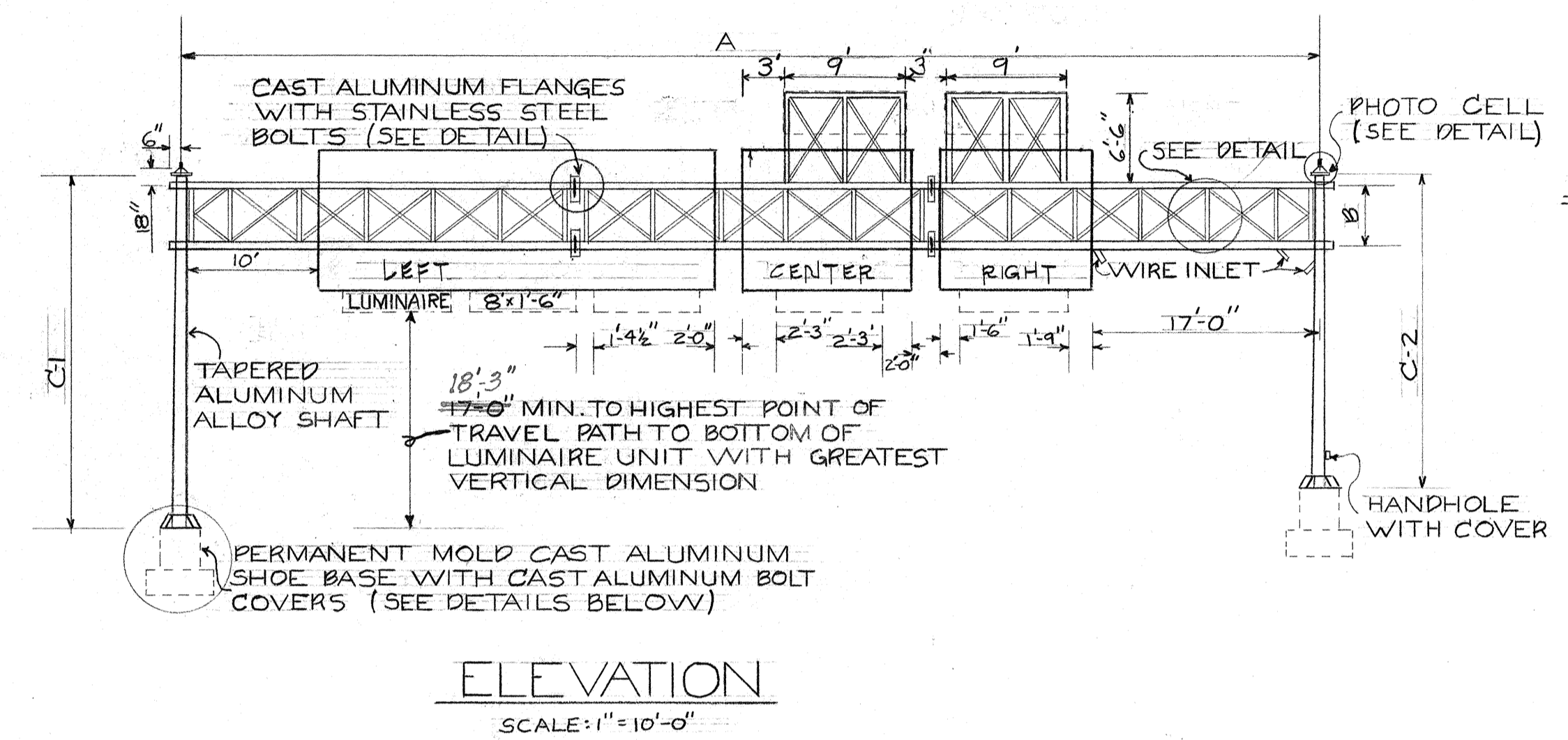
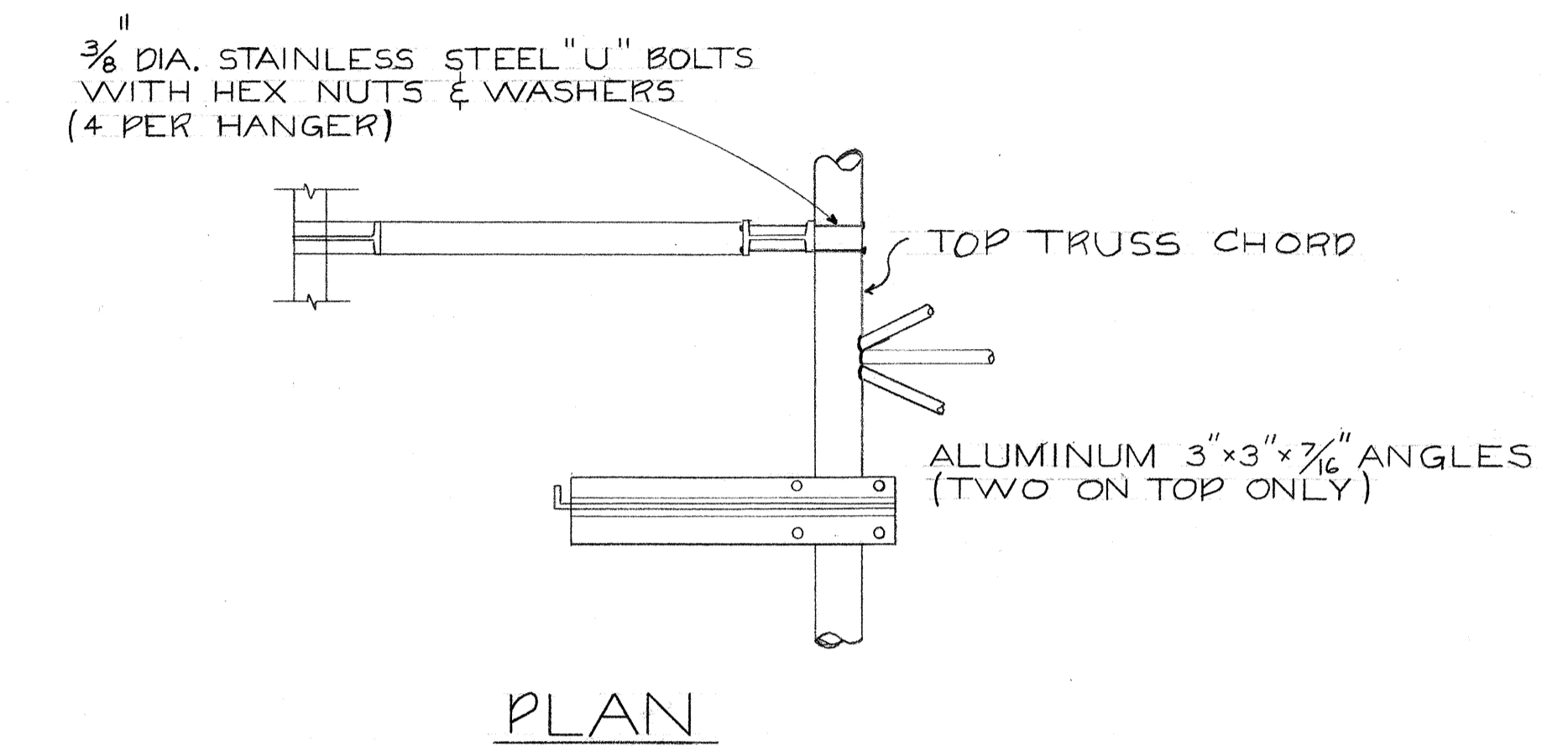
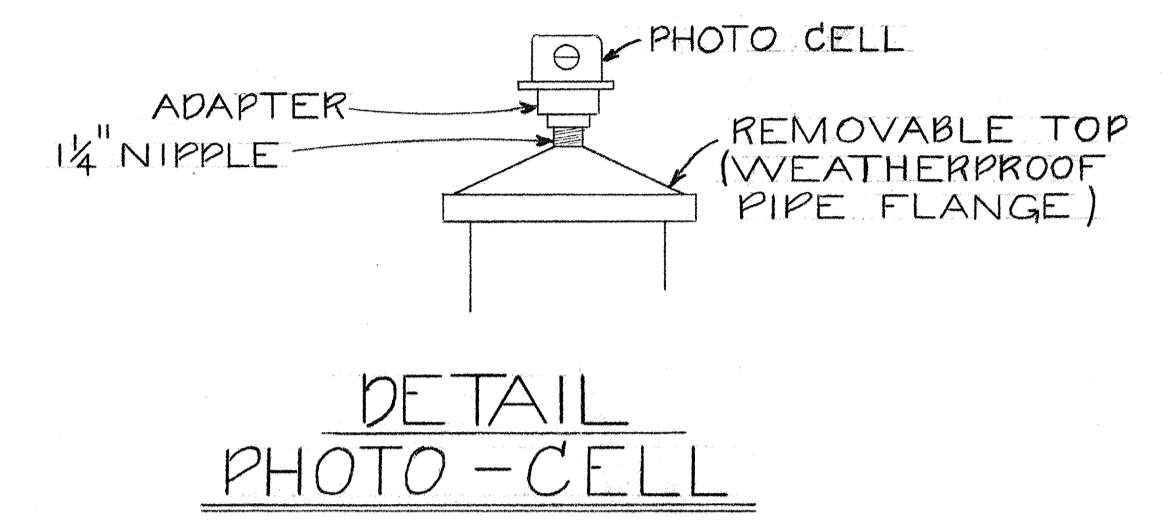
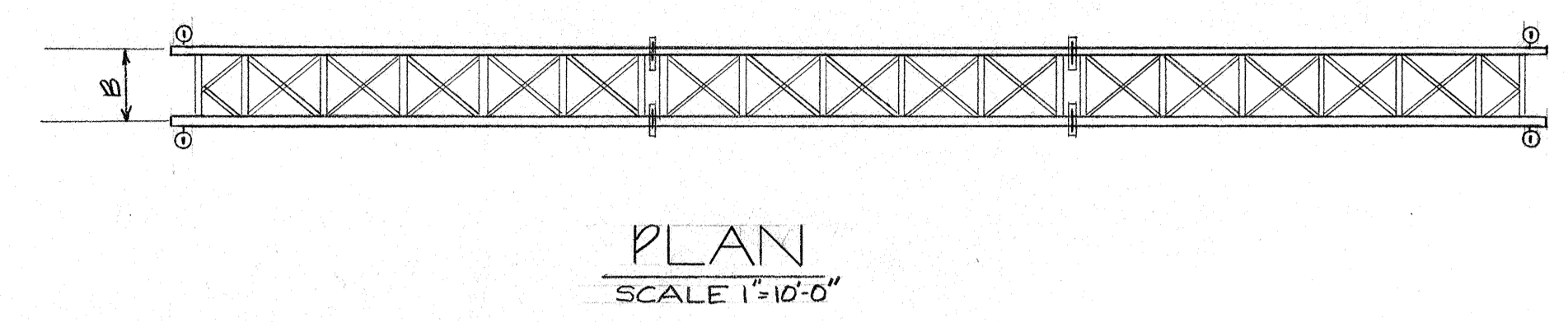
STRIPING PLAN
SALT LAKE BLVD.

F.A.I. PROJECT NO. I-HI-1(104):13

SCALE AS SHOWN

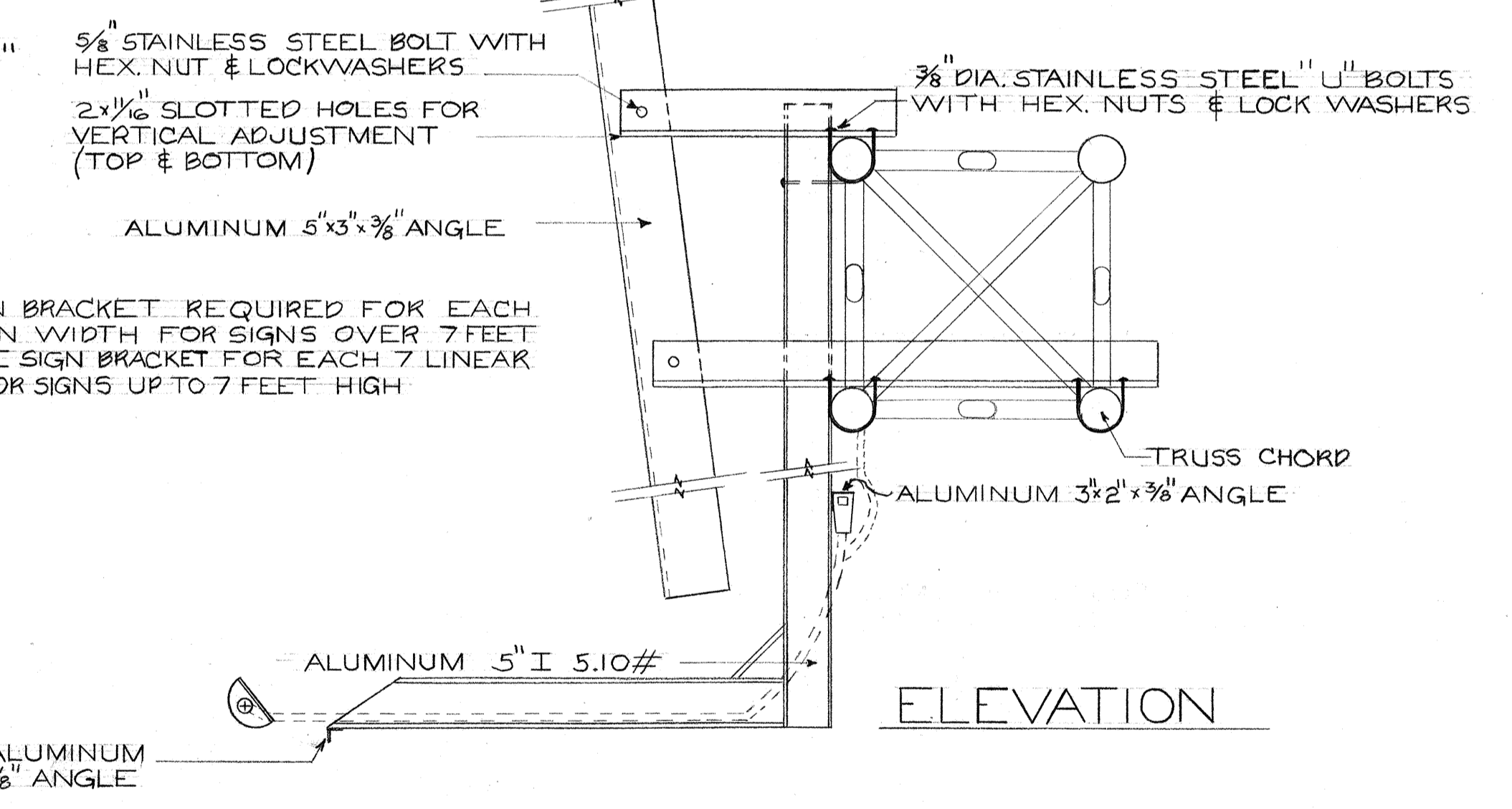
SHEET NO. OF SHEETS

FED. ROAD DIST. NO.	STATE	FED. AID PROJ. NO.	FISCAL YEAR	SHEET NO.	TOTAL SHEETS
HAWAII	HAW.	I-41-1 (104) 13	1972	31	103

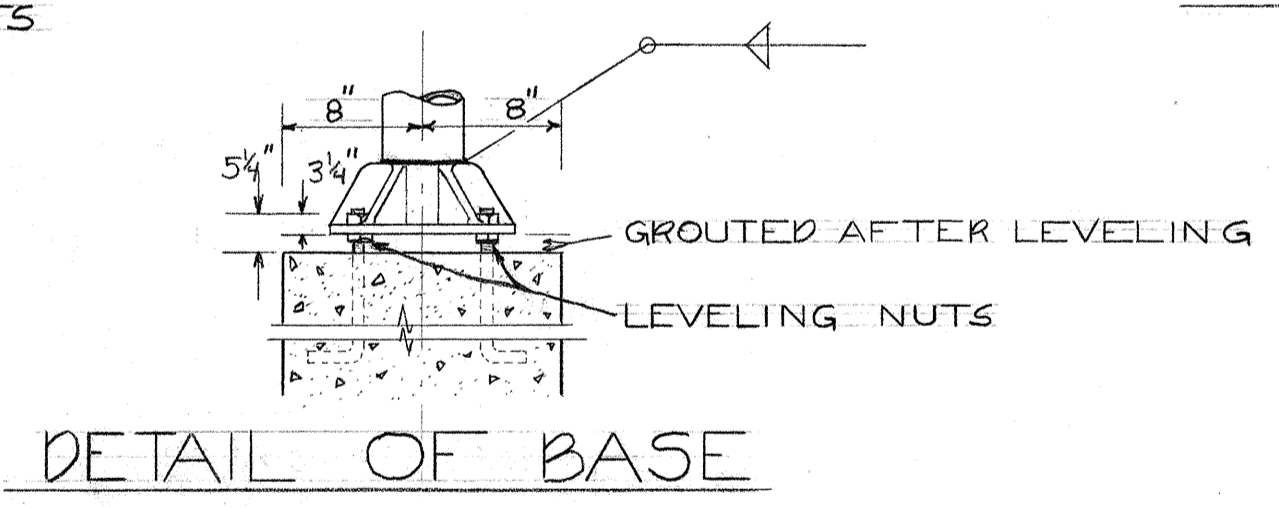
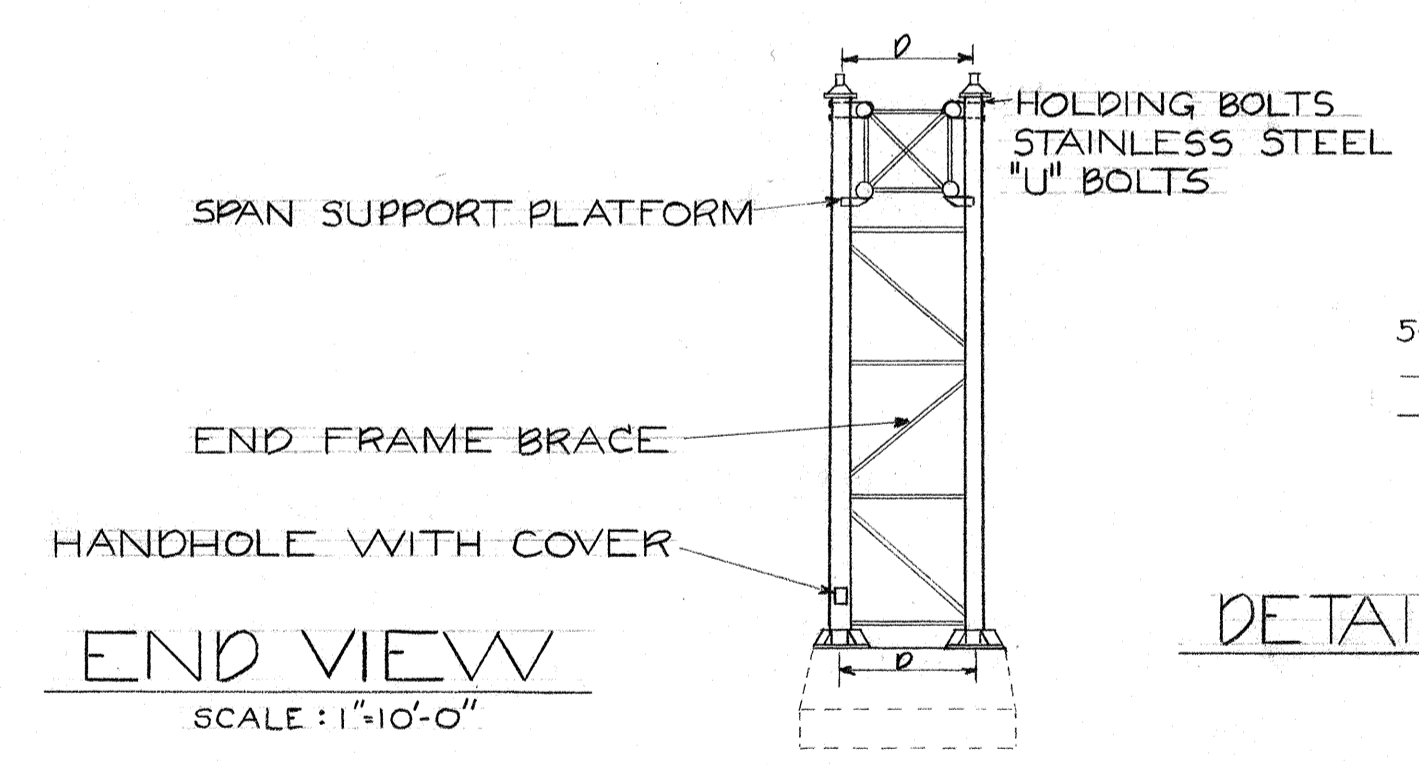


NOTE: FILLET WELD SIZE TO BE TUBE THICKNESS PLUS 1/16"

NOTE: MINIMUM OF ONE SIGN BRACKET REQUIRED FOR EACH 5 LINEAR FEET OF SIGN WIDTH FOR SIGNS OVER 7 FEET HIGH. MINIMUM OF ONE SIGN BRACKET FOR EACH 7 LINEAR FEET OF SIGN WIDTH FOR SIGNS UP TO 7 FEET HIGH.



SIGN BRACKET ASSEMBLY



A	B	C-1	C-2	D	SPAN SECTIONS REQ'D.	CHORD SIZE	END FRAME SHAFT SIZE AND TAPER	VERTICAL DIAGONAL SIZE	HORIZONTAL DIAGONAL SIZE	INTERNAL DIAGONAL SIZE	END FRAME BRACE SIZE	CAMBER	BOLT CIRCLE DIA.	ANCHORAGE
82.27	5'-0"	23'-10"	26'-1"	6'-4"	3	5 1/2" O.D. 250 WALL	10"x8"x188 WALL	2 1/2" O.D. 188 WALL	2 1/2" O.D. 188 WALL	2 1/2" O.D. 188 WALL	3 1/2" O.D. 188 WALL	2 3/4"	16"	1 1/2" DIA. x 48" LG.



THIS WORK WAS PREPARED BY ME OR UNDER MY SUPERVISION.

STATE OF HAWAII
DEPARTMENT OF TRANSPORTATION
HIGHWAYS DIVISION

OVERHEAD SIGN SUPPORT
BOX TRUSS TYPE "F"
ALUMINUM

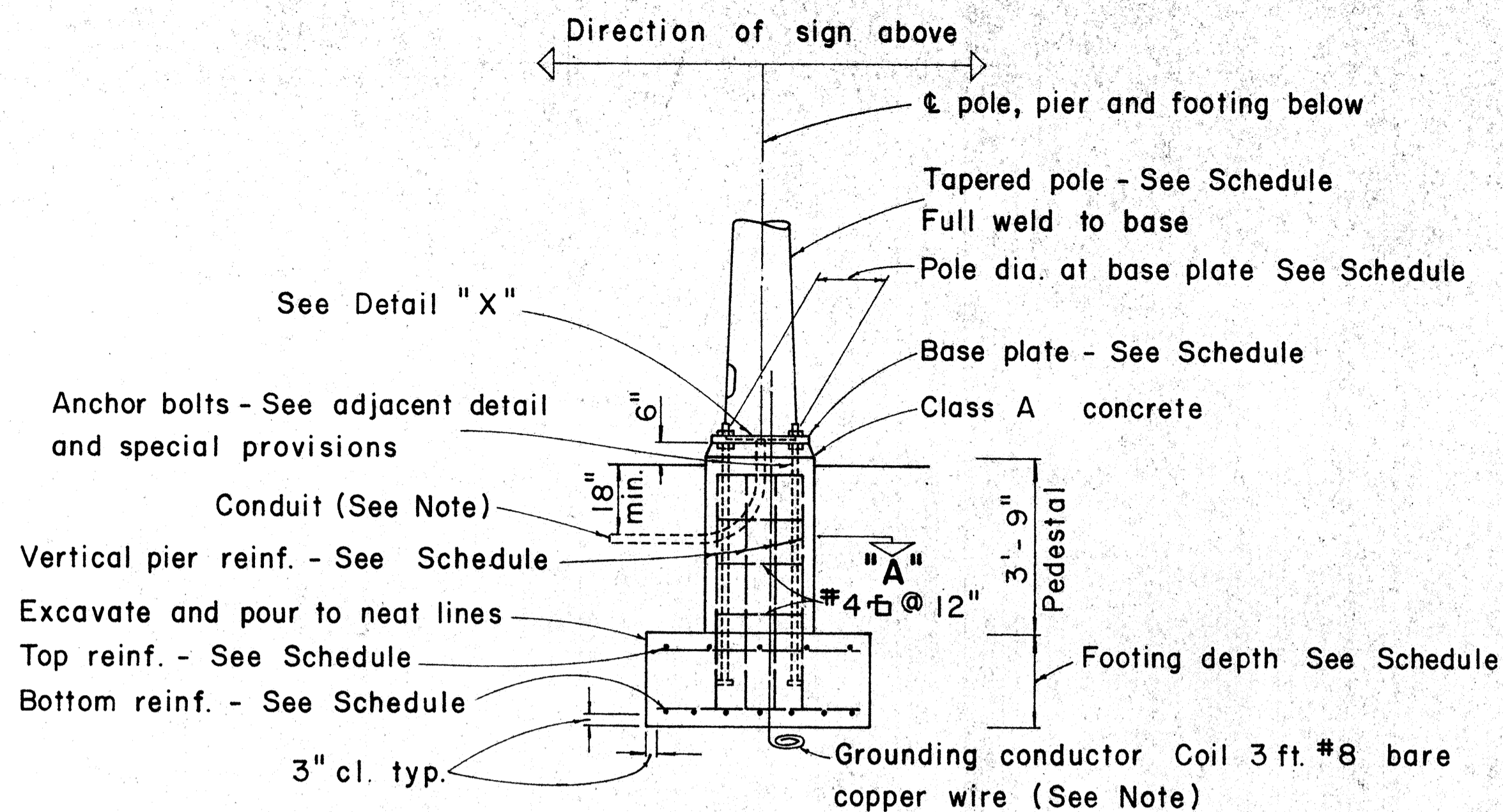
INTERSTATE ROUTE H-1
NORTH LEG VIADUCT
F.A.I. PROJECT NO. I-HI-1(104) 13

SCALE AS SHOWN DATE: _____

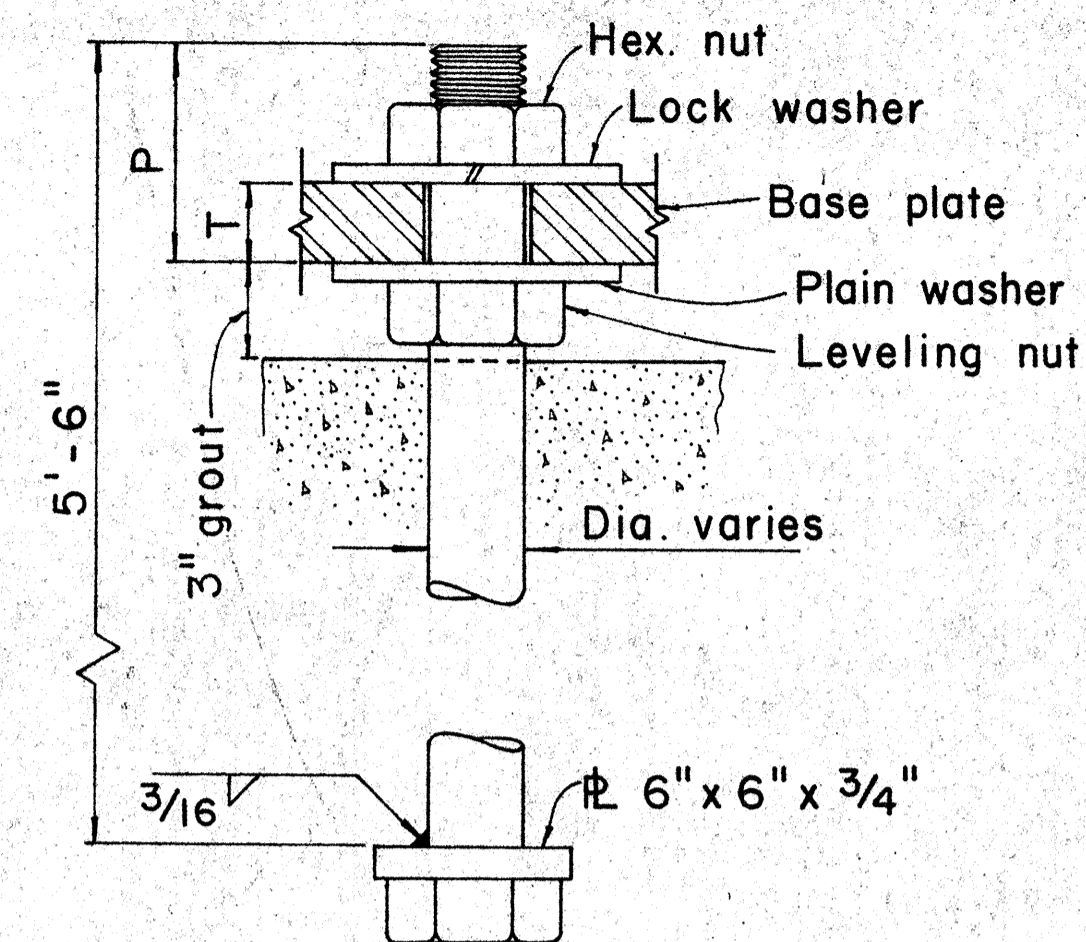
SHEET No. OF SHEETS

DATE	*****
SURVEY PLOTTED BY	
DRAWN BY	
DESIGNED BY	
QUANTITIES BY	
CHECKED BY	
ORIGINAL PLAN	
NOTE BOOK	
No.	

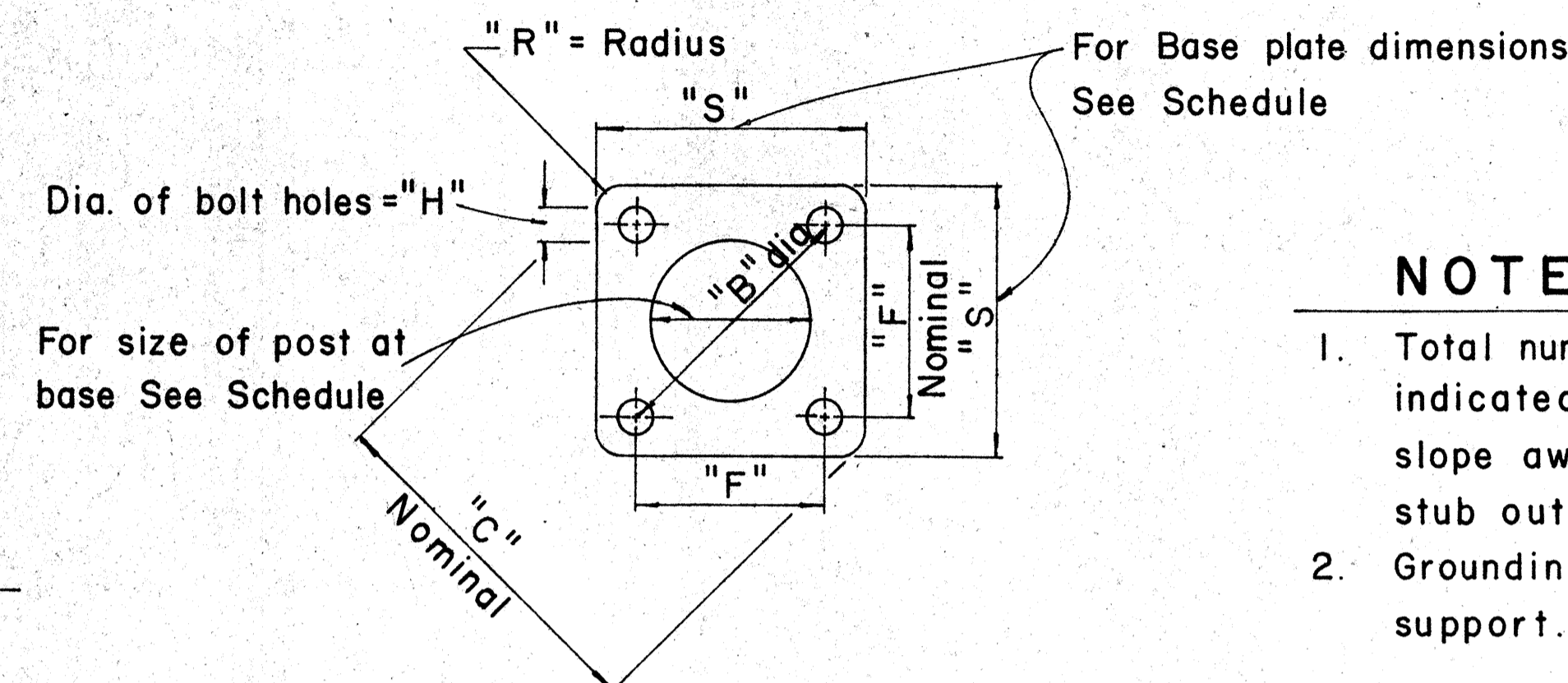
FED. ROAD DIST. NO.	STATE	FED. AID PROJ. NO.	FISCAL YEAR	SHEET NO.	TOTAL SHEETS
HAWAII	HAW.	FH-1 (104)113	1972	32	138



TYPICAL POLE FOUNDATION DETAIL



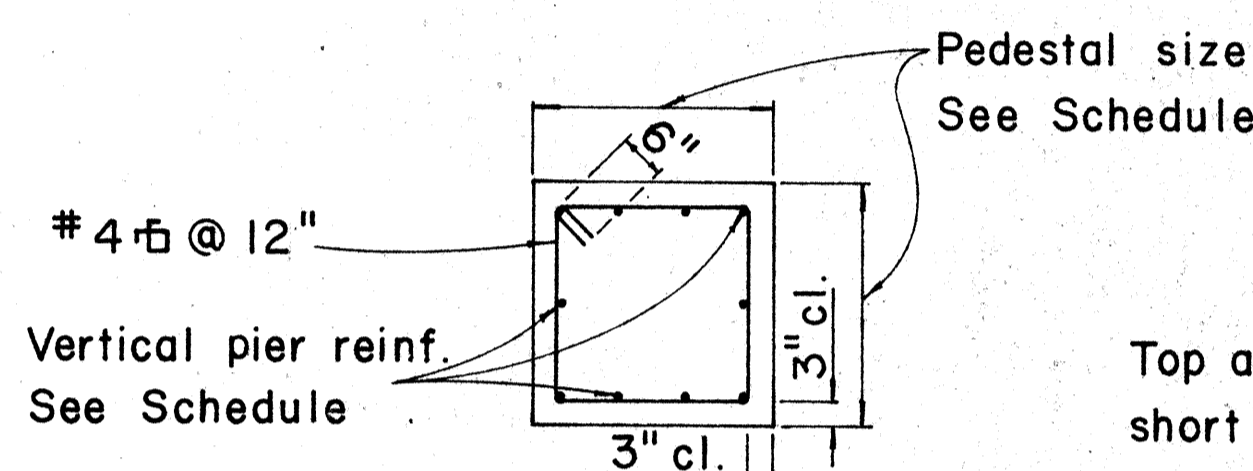
TYPICAL ANCHOR BOLT 4 REQ'D



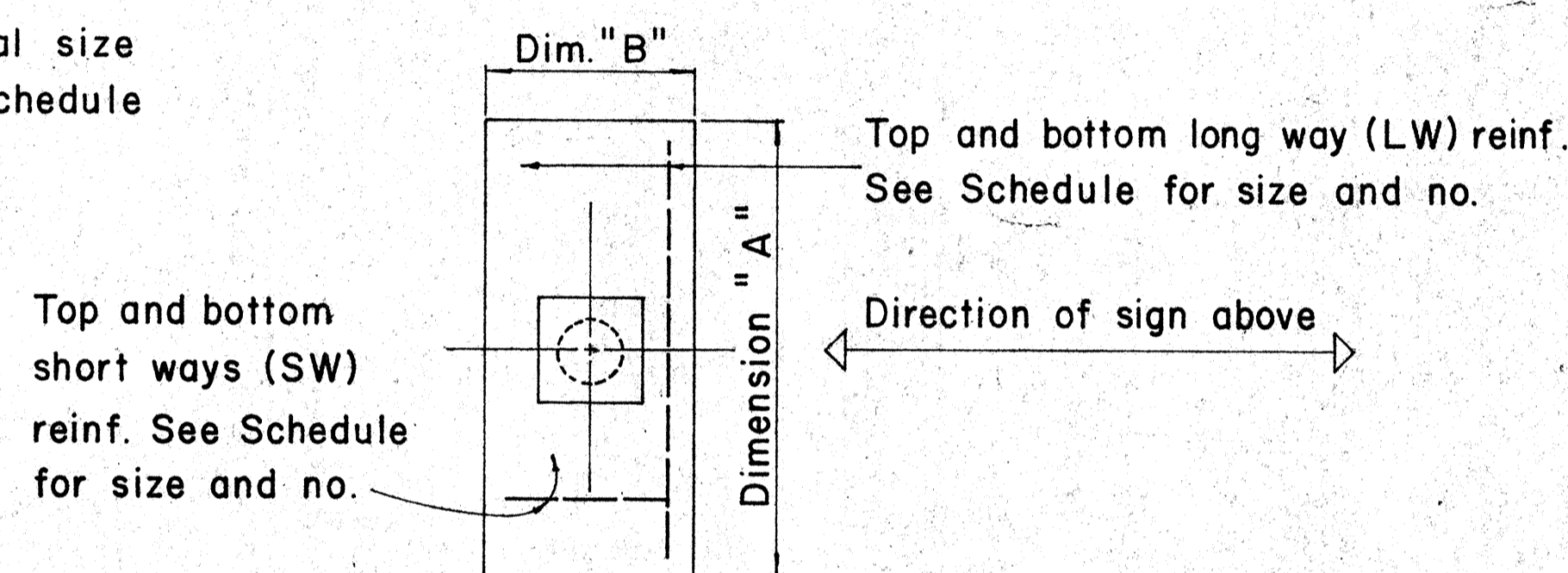
TYPICAL BASE PLATE

NOTE:

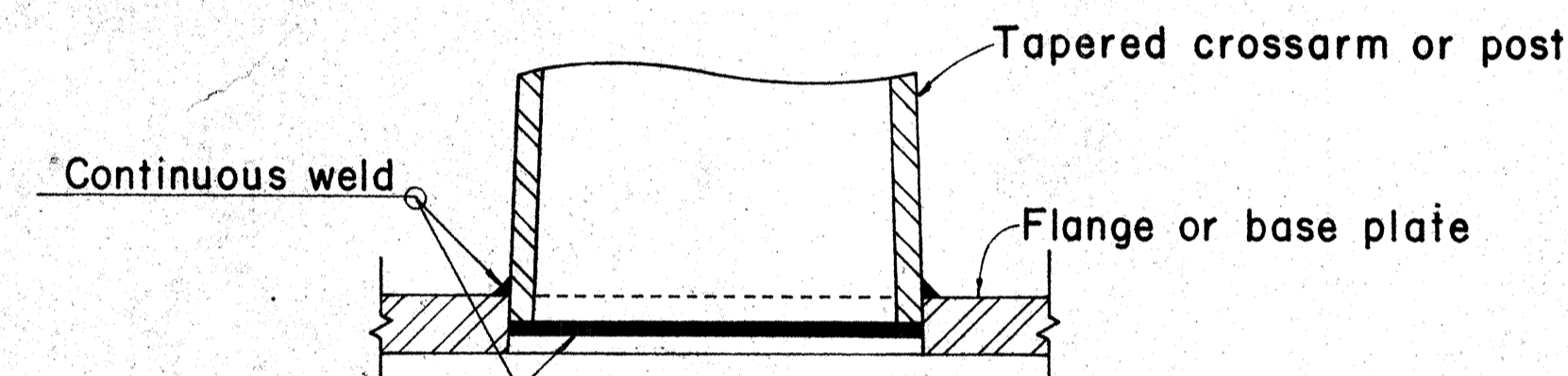
- Total number of conduits into pole foundation as indicated on Lighting plans. Conduits shall slope away from pole foundation. Conduit shall stub out 5'-0" min. for direct burial entry.
- Grounding conductor shall be bonded to sign support.



SECTION "A"



TYPICAL FOOTING DETAIL



DETAIL "X"

FOUNDATION SCHEDULE

Type	Dimension		Depth	Bot Reinf.		Top Reinf.		Pedestal	
	A	B		L. W.	S. W.	L. W.	S. W.	Size	Vert. Reinf.
I	7'-0"	3'-0"	2'-0"	3-#6	8-#4	#4 @ 12 each way		1'-11"	10-#5
II	9'-0"	4'-6"	2'-0"	6-#6	10-#4	Do.		2'-6"	10-#7
III	10'-0"	5'-0"	2'-0"	5-#8	11-#4	Do.		2'-6"	10-#8
IV	12'-0"	6'-0"	2'-0"	7-#9	13-#4	Do.		2'-9"	10-#10
V	14'-0"	7'-0"	2'-0"	8-#11	19-#4	Do.		2'-9"	10-#11

APPROVAL RECOMMENDED:

Eishi Tanaka
TRAFFIC ENGINEER
12/29/69
DATE

APPROVED:

Richard P. ...
ASSISTANT CHIEF, ENGINEERING
12-30-69
DATE

NO.	REVISION	APPROVED BY	DATE
1	Foundation Schedule	H.C.	8/14/70

STATE OF HAWAII
DEPARTMENT OF TRANSPORTATION
HIGHWAYS DIVISION

DETAILS & SCHEDULES

NOT TO SCALE

SHEET No. OF SHEETS DT 202

FED. ROAD DIST. No.	STATE	FED. AID PROJ. No.	FISCAL YEAR	SHEET No.	TOTAL SHEETS
HAWAII	HAW.	I-HI-1 (124)13	1972	33	103

(OVERHEAD SIGNS)
SUPPORT SPACING TABLE

PANEL THICK.	LENGTH OF SIGN	NO. OF SUPPORTS	OVERHANG	SUPPORT SPACING
	A		B	C or C ₁
1"	6'-0"	2	12"	48"
1"	6'-6"	2	15"	48"
1"	7'-0"	2	15"	54"
1"	7'-6"	2	18"	54"
1"	8'-0"	2	18"	60"
1"	8'-6"	2	20"	62"
1"	9'-0"	2	22"	64"
1"	9'-6"	2	23"	68"
1"	10'-0"	2	24"	72"
1"	10'-6"	2	24"	78"
1"	11'-0"	2	24"	84"
1"	11'-6"	2	27"	84"
1"	12'-0"	2	30"	84"
1"	12'-6"	2	30"	90"
1"	13'-0"	2	30"	96"
1"	13'-6"	2	30"	102"
1"	14'-0"	2	30"	108"
1"	14'-6"	2	36"	102"
1"	15'-0"	2	36"	108"
1"	15'-6"	3	24"	69"
1"	16'-0"	3	24"	72"
1"	16'-6"	3	24"	75"
1"	17'-0"	3	24"	78"
1"	17'-6"	3	24"	81"
1"	18'-0"	3	24"	84"
1"	18'-6"	3	27"	84"
1"	19'-0"	3	27"	87"
1"	19'-6"	3	27"	90"
1"	20'-0"	3	30"	90"
1"	20'-6"	3	30"	93"
1"	21'-0"	3	30"	96"
1"	21'-6"	3	33"	96"
1"	22'-0"	3	36"	96"
1"	22'-6"	3	36"	99"
1"	23'-0"	3	36"	102"
1"	23'-6"	3	36"	105"
1"	24'-0"	3	36"	108"

APPROVAL RECOMMENDED:
Eishi Tanaka 12/29/69
TRAFFIC ENGINEER DATE

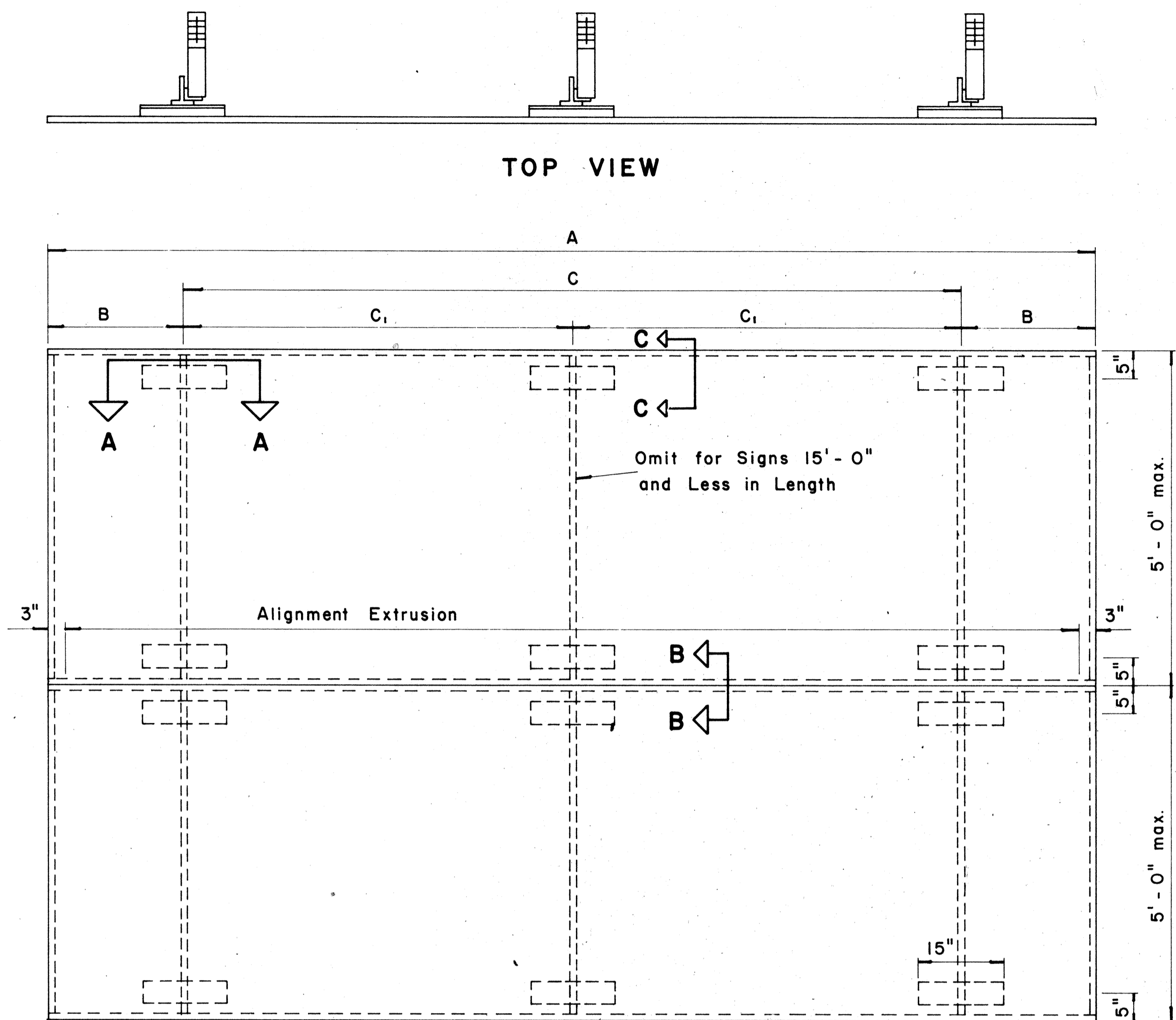
APPROVED:
John J. S. S. S. 12-30-69
ASSISTANT CHIEF, ENGINEERING DATE

NO.	REVISION	APPROVED BY	DATE

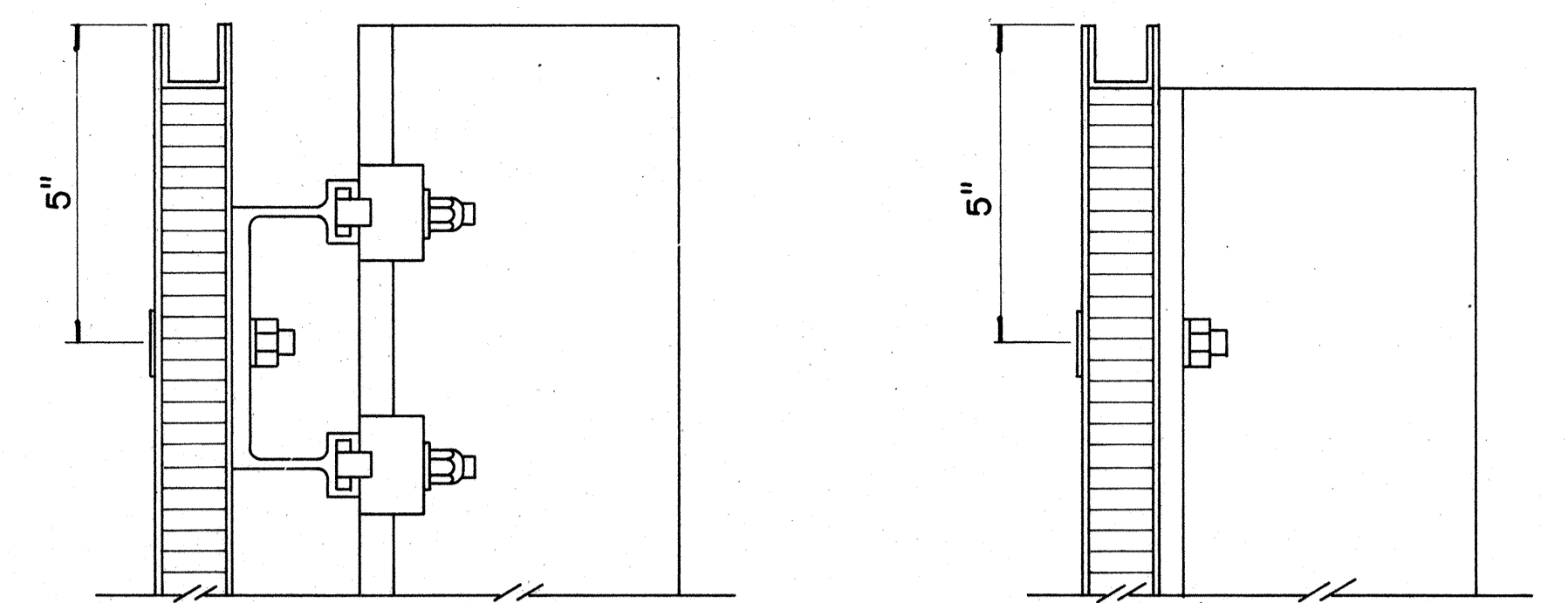
STATE OF HAWAII
DEPARTMENT OF TRANSPORTATION
HIGHWAYS DIVISION

STANDARD DETAILS
LAMINATED ALUMINUM
SIGN PANELS
(OVERHEAD)

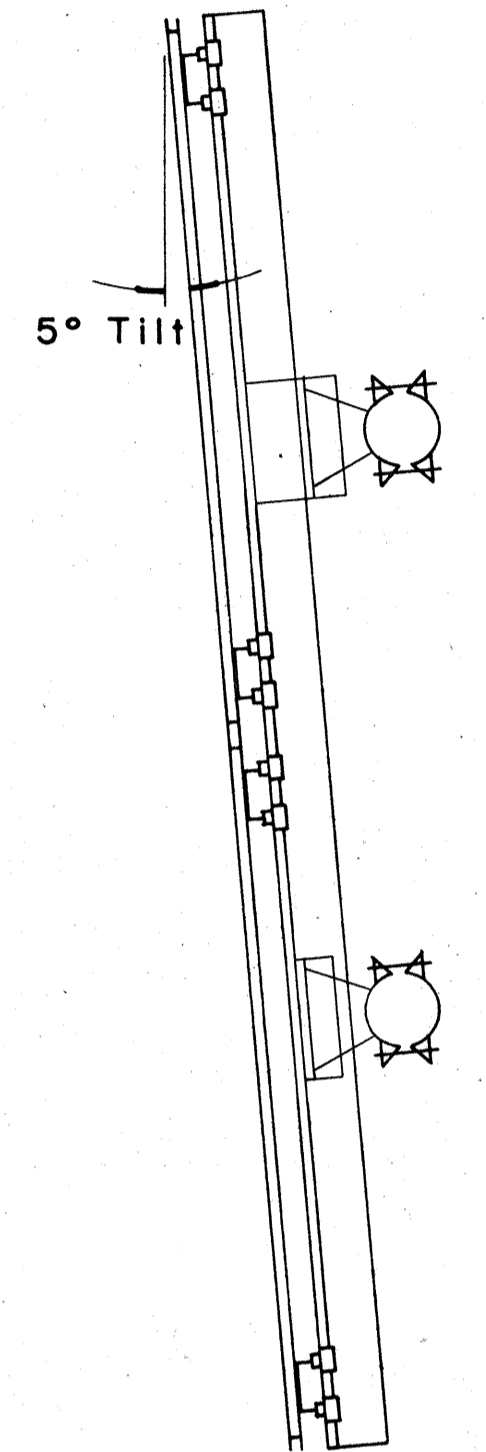
Scale: As Shown



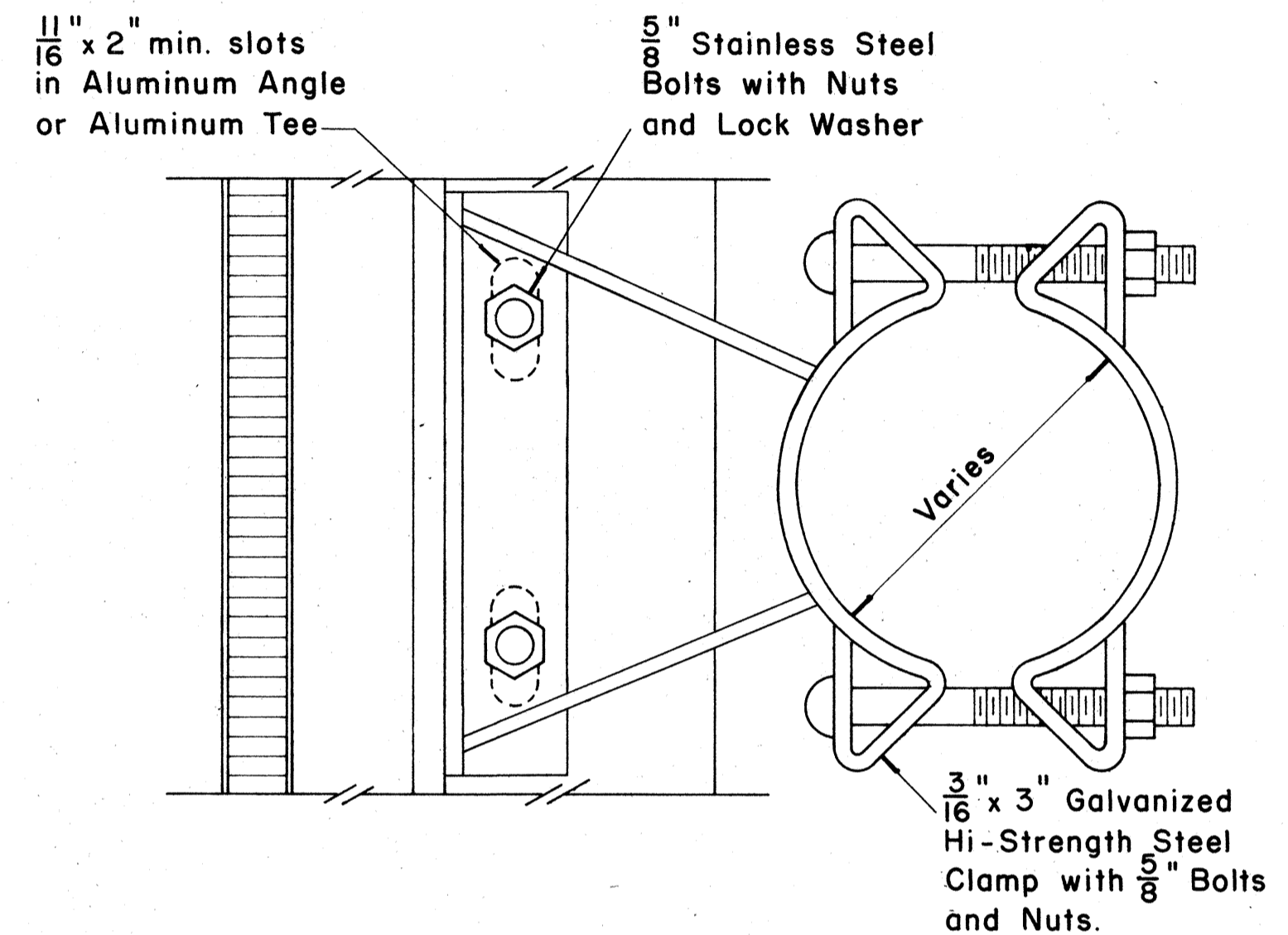
TYPICAL SIGN ASSEMBLY
Scale: $\frac{3}{4}$ " = 1'-0"



SECTION "C-C" Scale: $\frac{3}{8}$ " = 1"
SECTION "C-C" (Alternate) Scale: $\frac{3}{8}$ " = 1"

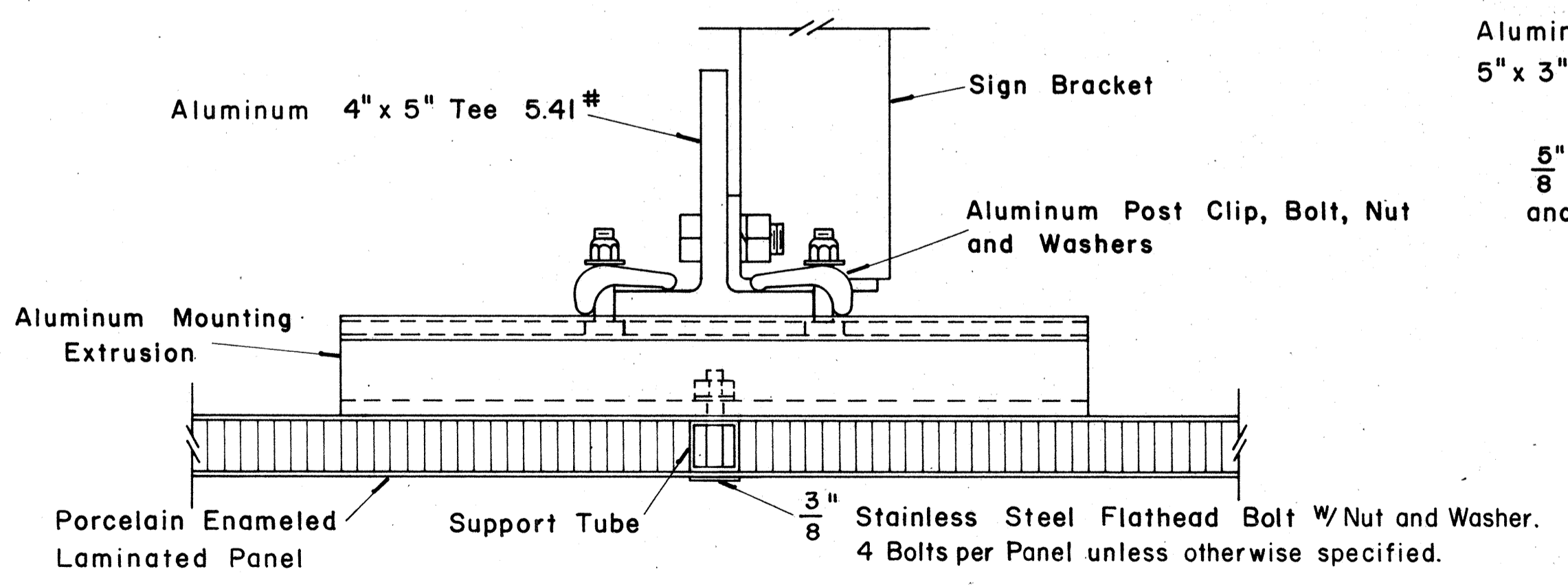


SIDE VIEW

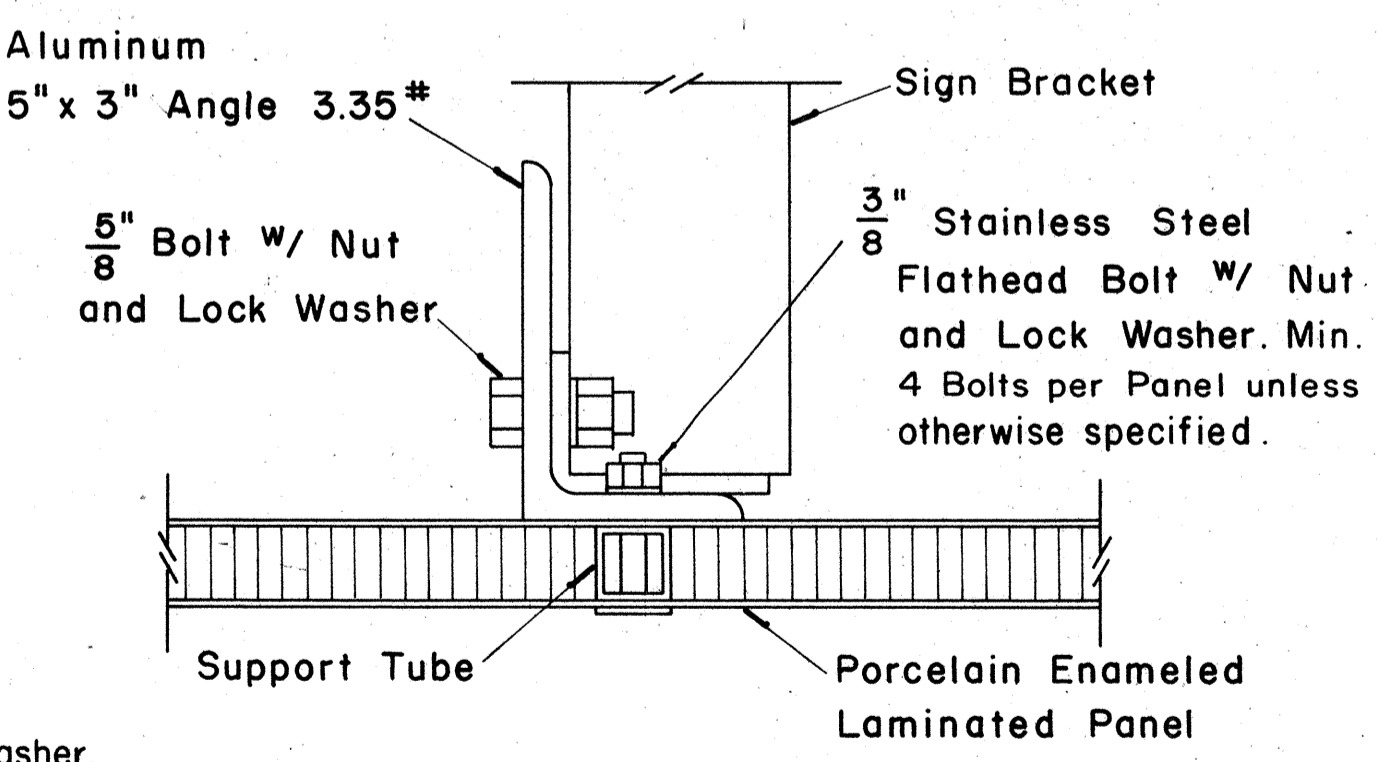


SIGN BRACKET ASSEMBLY

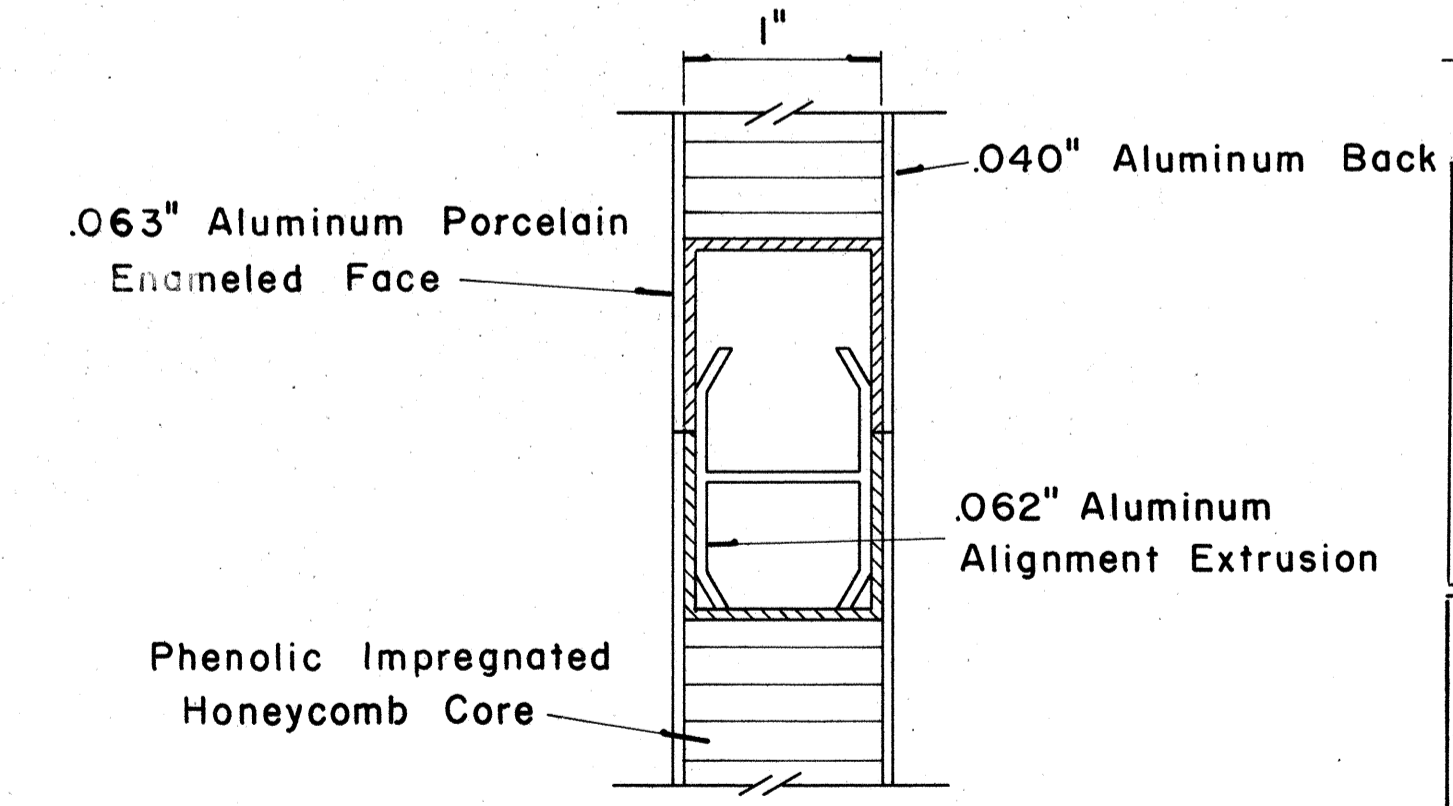
Scale: $\frac{3}{8}$ " = 1"
NOTE: For additional details of Sign Bracket Assembly, see Standard Detail Sheet "Overhead Sign Supports."



SECTION "A-A"
Scale: $\frac{3}{8}$ " = 1"

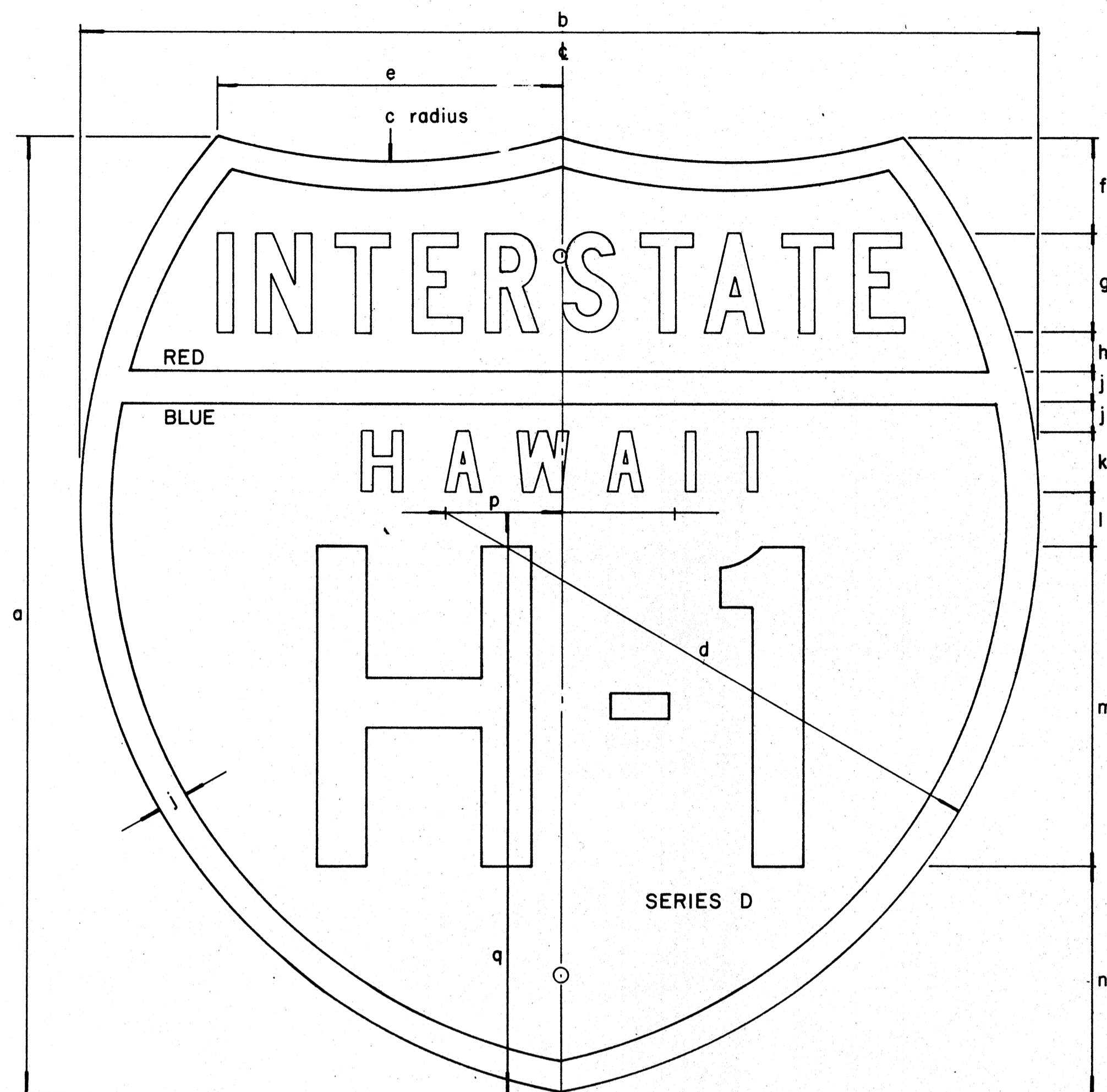


SECTION "A-A" (Alternate)
Scale: $\frac{3}{8}$ " = 1"



CLOSURE DETAIL SECTION "B-B"
FULL SCALE

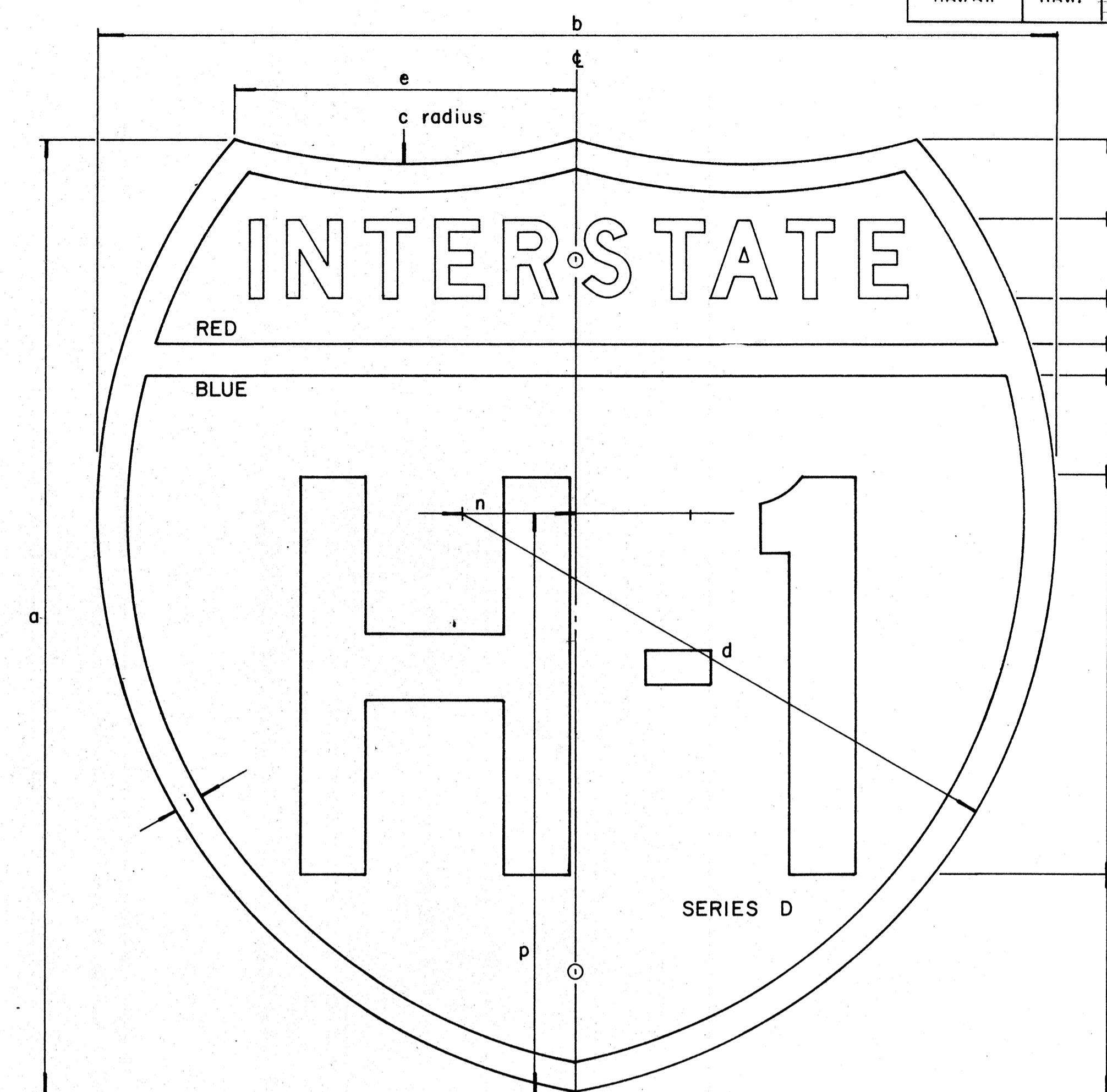
DATE: _____
SURVEY PLOTTED BY: _____
DRAWN BY: _____
CHECKED BY: _____
ORIGINAL PLAN: _____
NOTE BOOK: _____
No. _____



INTERSTATE ROUTE MARKER
IM-1()

INTERSTATE SHIELDS - INDEPENDENT USE

()	a	b	c	d	e	f	g	h	j	k	l	m	n	p	q
1	18	21	13 1/8	12 9/16	9 3/16	12 5/32	1 7/8 C	3/4	9/16	1 1/8 D	1 1/32	6	4 5/16	2 1/16	12 7/16
2	24	24	15	14 7/8	8 5/8	2 3/8	2 1/2 C	1	3/4	1 1/2 D	1 3/8	8	5 3/4	2 7/8	14 5/8
3	36	36	22 1/2	22 5/16	12 15/16	3 9/16	3 3/4 C	1 1/2	1 1/8	2 1/4 D	2 1/16	12	8 5/8	4 5/16	21 5/16



INTERSTATE ROUTE MARKER
IM-2()

INTERSTATE SHIELDS ON GUIDE SIGNS

()	a	b	c	d	e	f	g	h	j	k	l	m	n	p
2	24	24	15	14 7/8	8 5/8	2	2 D	1 3/16	3/4	2 9/16	10	5 1/2	2 7/8	14 5/8
3	36	36	22 1/2	22 5/16	12 15/16	3 7/16	3 C	1 5/16	1 1/8	3 1/8	15	9	4 5/16	21 5/16
4	48	48	30	29 3/4	17 1/4	4 3/4	5 C	2	1 1/2	4	18	12 3/4	5 3/4	29 1/4

GENERAL NOTES

- The shape, dimensions, symbols, wording, lettering, color and reflectorizing of all signs shall be in accordance with the "Manual on Uniform Traffic Control Devices for Streets and Highways," dated June, 1961 and the BPR manual "Standard Highway Signs," dated September, 1961, unless otherwise specified.
- All letters and figures shall conform to the manual "Standard Alphabets for Highway Signs," Dept. of Commerce, Bureau of Public Roads, 1966
- All markers shall be reflectorized unless otherwise specified.
- All markers shall have 3/8" bolt holes drilled at appropriate locations unless otherwise specified.
- The Interstate Route Marker shall be a cut-out shield, in a red, white and blue design as shown on the plans.

APPROVAL RECOMMENDED:

Eiichi Tanaka
TRAFFIC ENGINEER
12/29/69
DATE

APPROVED:

Shunji S. S. S.
ASSISTANT CHIEF, ENGINEERING
12-30-69
DATE

NO.	REVISION	APPROVED BY	DATE

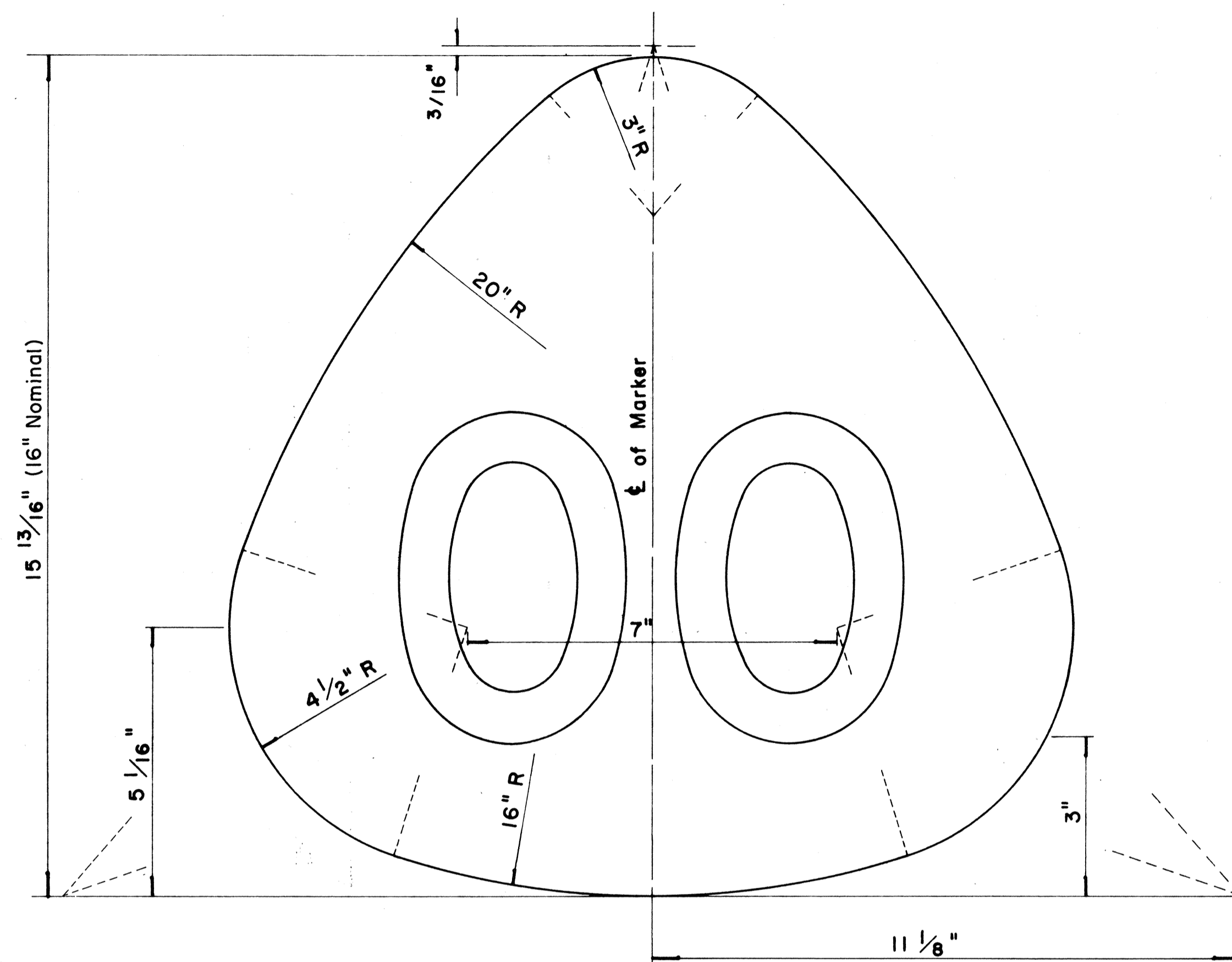
STATE OF HAWAII
DEPARTMENT OF TRANSPORTATION
HIGHWAYS DIVISION

STANDARD DETAILS
INTERSTATE ROUTE MARKERS

DATE
DESIGNED BY
CHECKED BY
DRAWN BY
TRACED BY
DESIGNED BY
CHECKED BY
ORIGINAL PLAN
NOTE BOOK
No.

FED. ROAD DIST. NO.	STATE	FED. AID PROJ. NO.	FISCAL YEAR	SHEET NO.	TOTAL SHEETS
HAWAII	HAW.	1-11-1 (104) 115	1972	35	103

MARKER SIZE	MULTIPLY DIMENSIONS BY	NUMERAL SIZE
		2 Digit - Series D 3 Digit - Series C
16"	1	6"
21"	1.3	8"
32"	2.0	12"
42"	2.63	16"



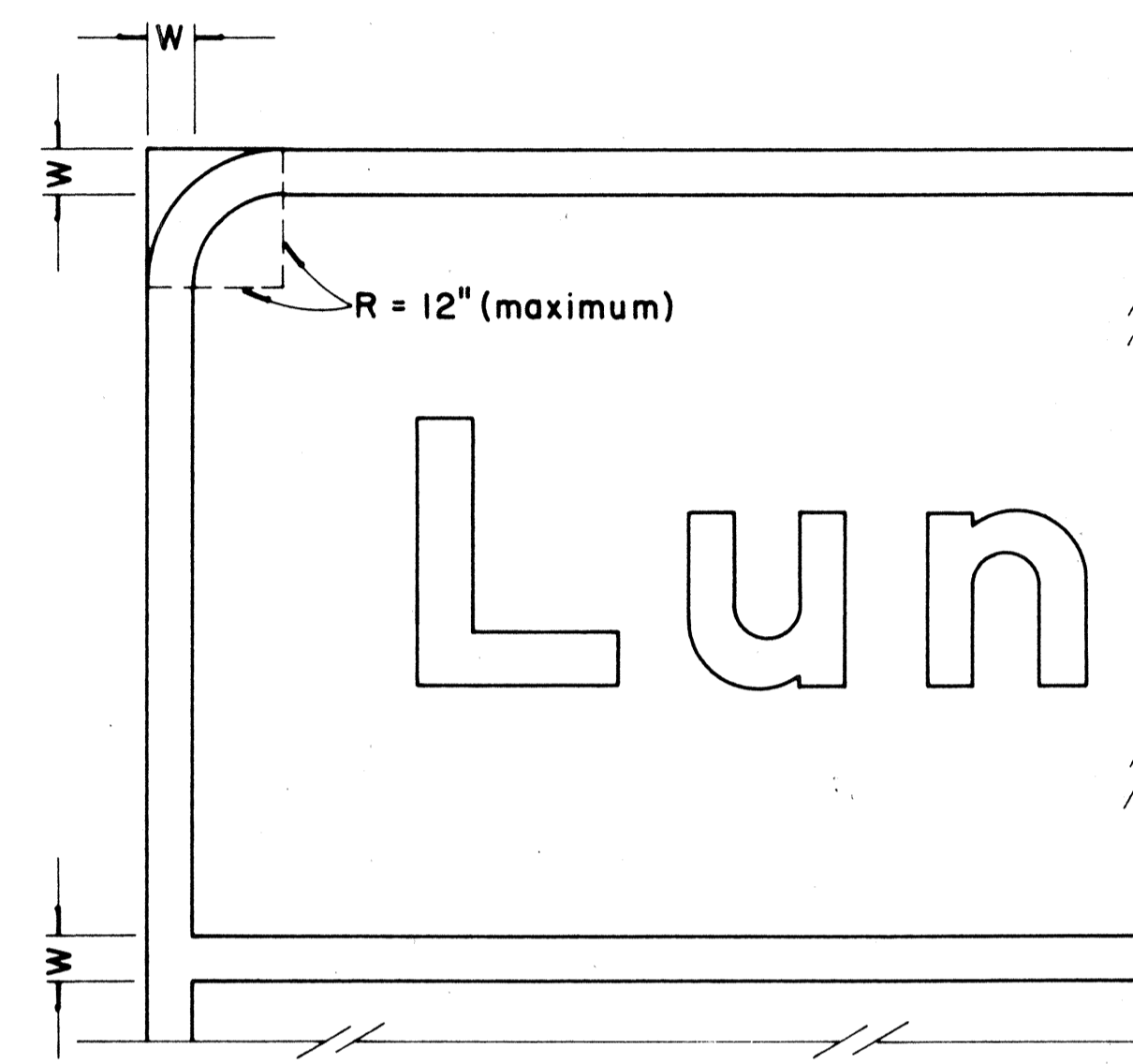
**STATE ROUTE MARKER
FOR GUIDE SIGNS**

Scale: Half Size

NOTE:

- State Route Markers on Guide signs shall have black numerals on a white reflectorized background mounted on a flat aluminum cut-out.
- Numerals shall conform to the FHWA publication "Standard Alphabets for Highway Signs," 1966.
- Cut-outs shall be fastened on sign panel with aluminum blind rivets. See Standard Specifications.
- * The 16" State Route Marker shall be used only with the Construction Identification sign.

RADI FOR SIGNS		
Least Dimension of Sign	W	R
2' - 0" to 4' - 6"	2"	3"
4' - 9" to 5' - 6"	2"	6"
5' - 9" to 7' - 6"	2"	9"
7' - 9" and greater	2"	12"



**BORDER DETAIL
FOR GUIDE SIGNS**

Not to Scale

NOTE:

- Area outside corner radius need not be trimmed.
- All borders shall be embossed cut-outs, white and reflectorized.
- All Guide signs shall have borders.

APPROVAL RECOMMENDED:

Eishi Tanaka 4/11/72
TRAFFIC ENGINEER DATE

APPROVED:

Walter S. Sakai 4/12/72
ASSISTANT CHIEF, ENGINEERING DATE

NO.	REVISION	APPROVED BY	DATE
1	Supersedes Sht. DT 209 Approved 12-30-69	H.T.	4/12/72

STATE OF HAWAII
DEPARTMENT OF TRANSPORTATION
HIGHWAYS DIVISION

STANDARD DETAILS
**STATE ROUTE MARKER
AND BORDER DETAIL
FOR GUIDE SIGNS**

Scale: As Shown

SHEET No. OF SHEETS DT 209

DATE	_____
DESIGNED BY	_____
CHECKED BY	_____
QUANTITIES BY	_____
NOTE BOOK	_____
ORIGINAL PLAN	_____
DATE	_____