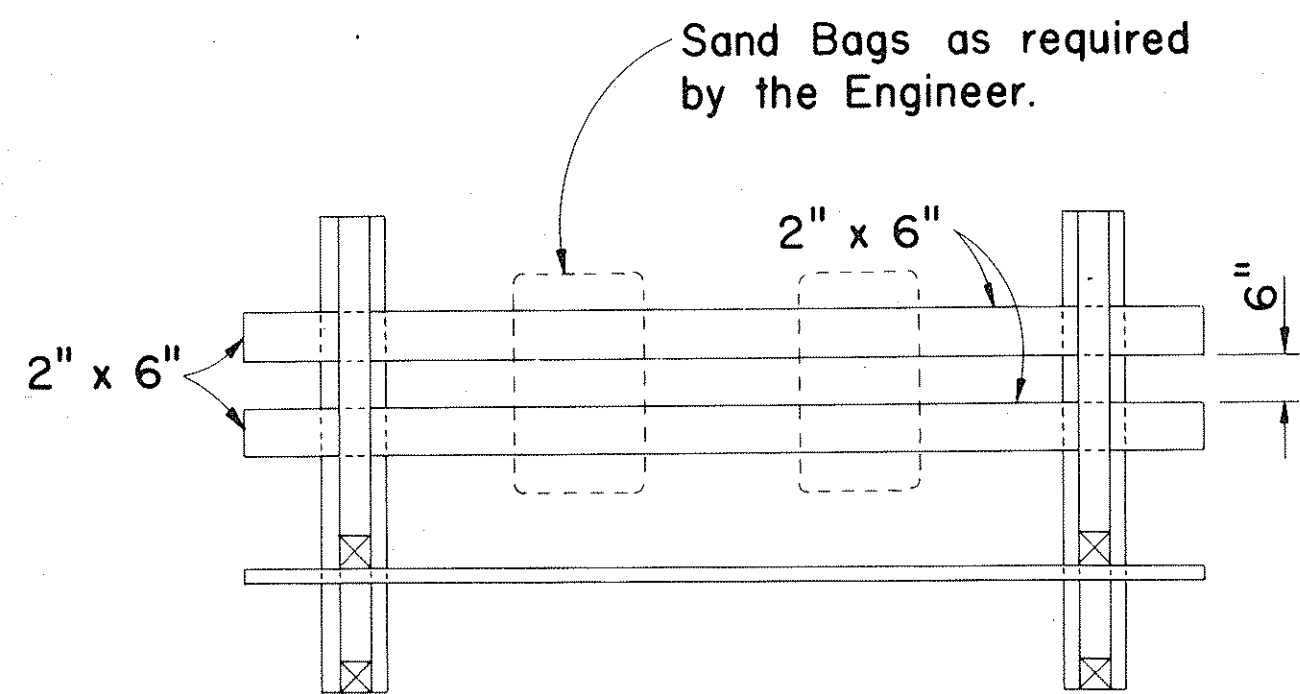
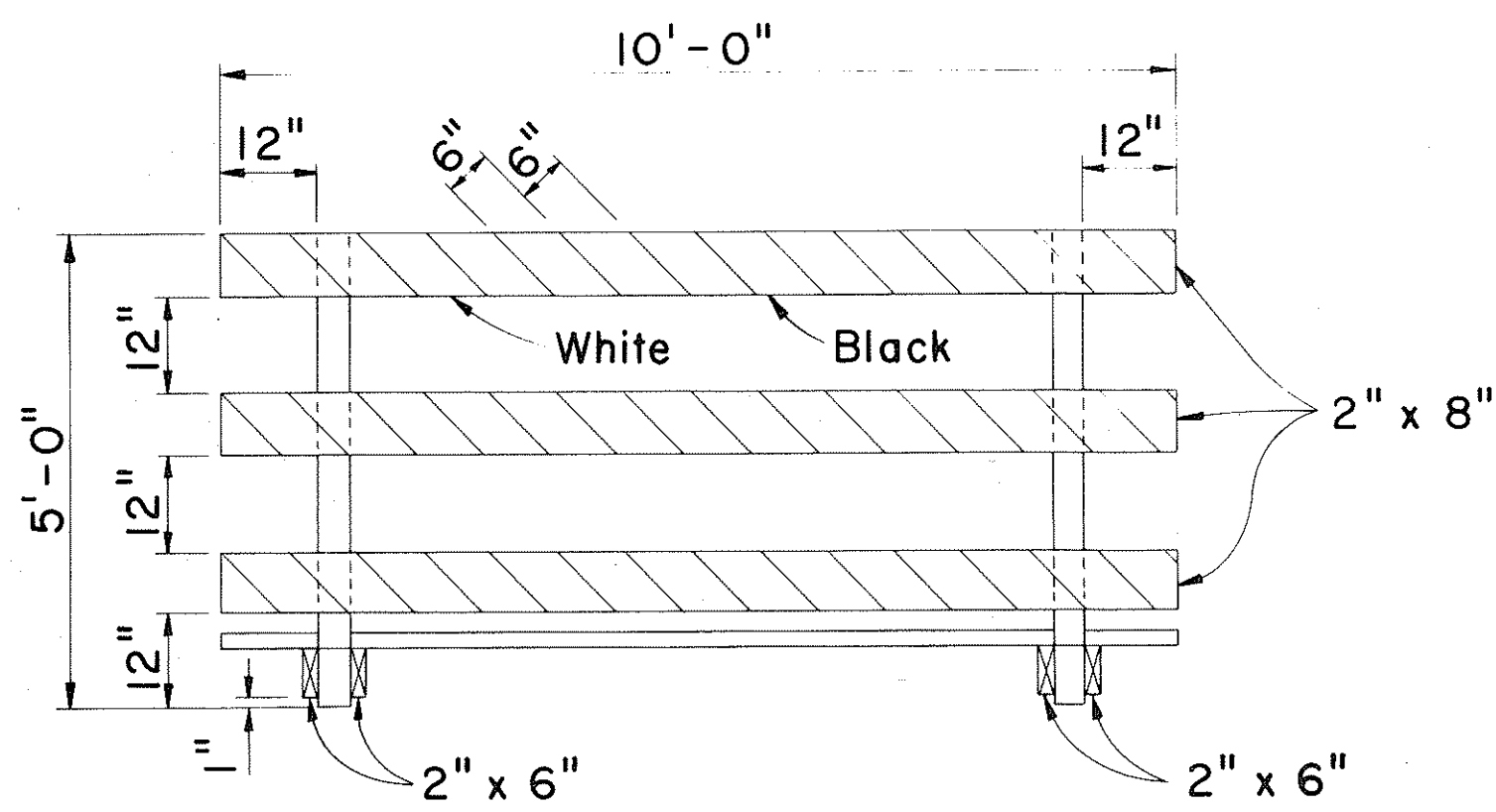


FED. ROAD DIST. NO.	STATE	FED. AID PROJ. NO.	FISCAL YEAR	SHEET NO.	TOTAL SHEETS
HAWAII	HAW.	1-11-1(10)B	1972	9	9



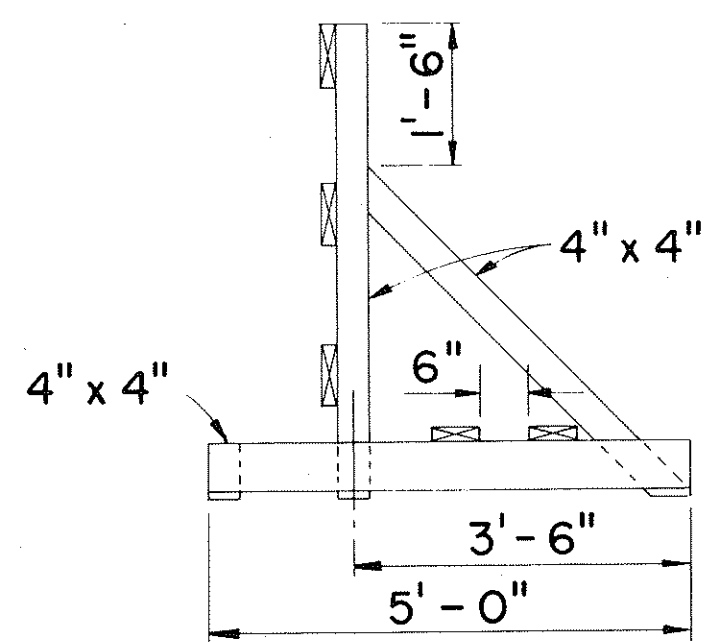
PLAN VIEW



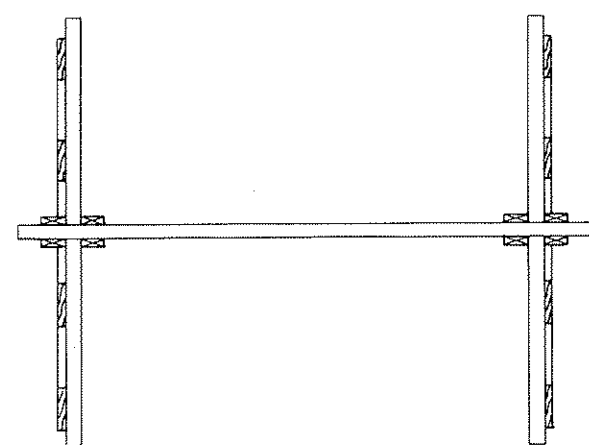
FRONT VIEW

CLASS I BARRICADE

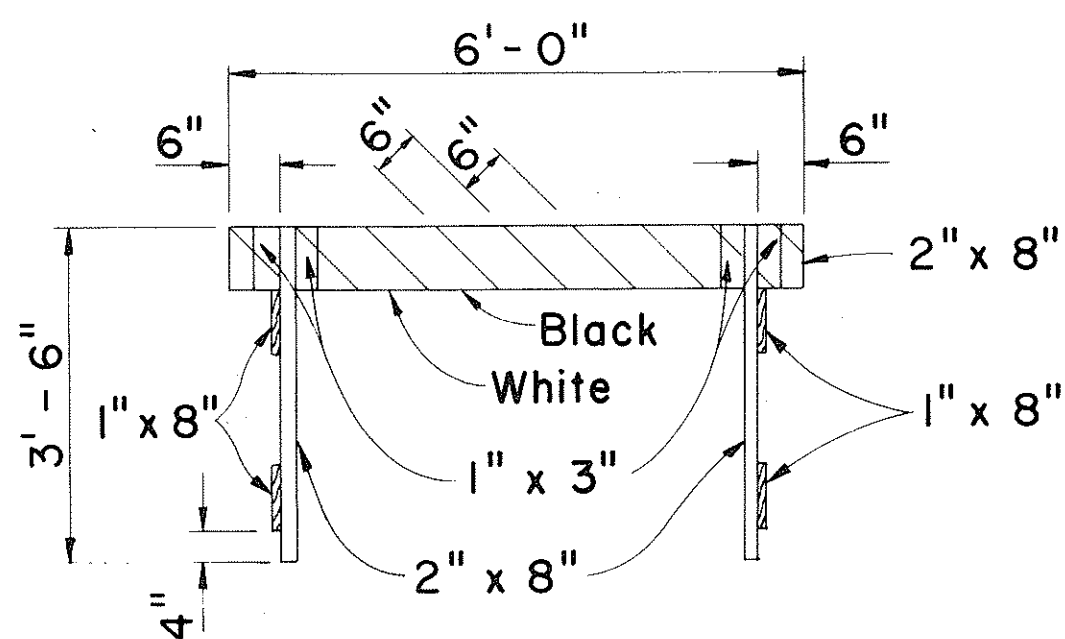
Scale: 1/2" = 1'-0"



END VIEW



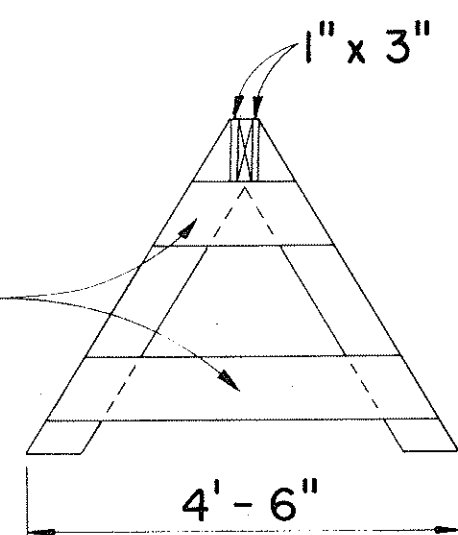
PLAN VIEW



FRONT VIEW

CLASS II BARRICADE

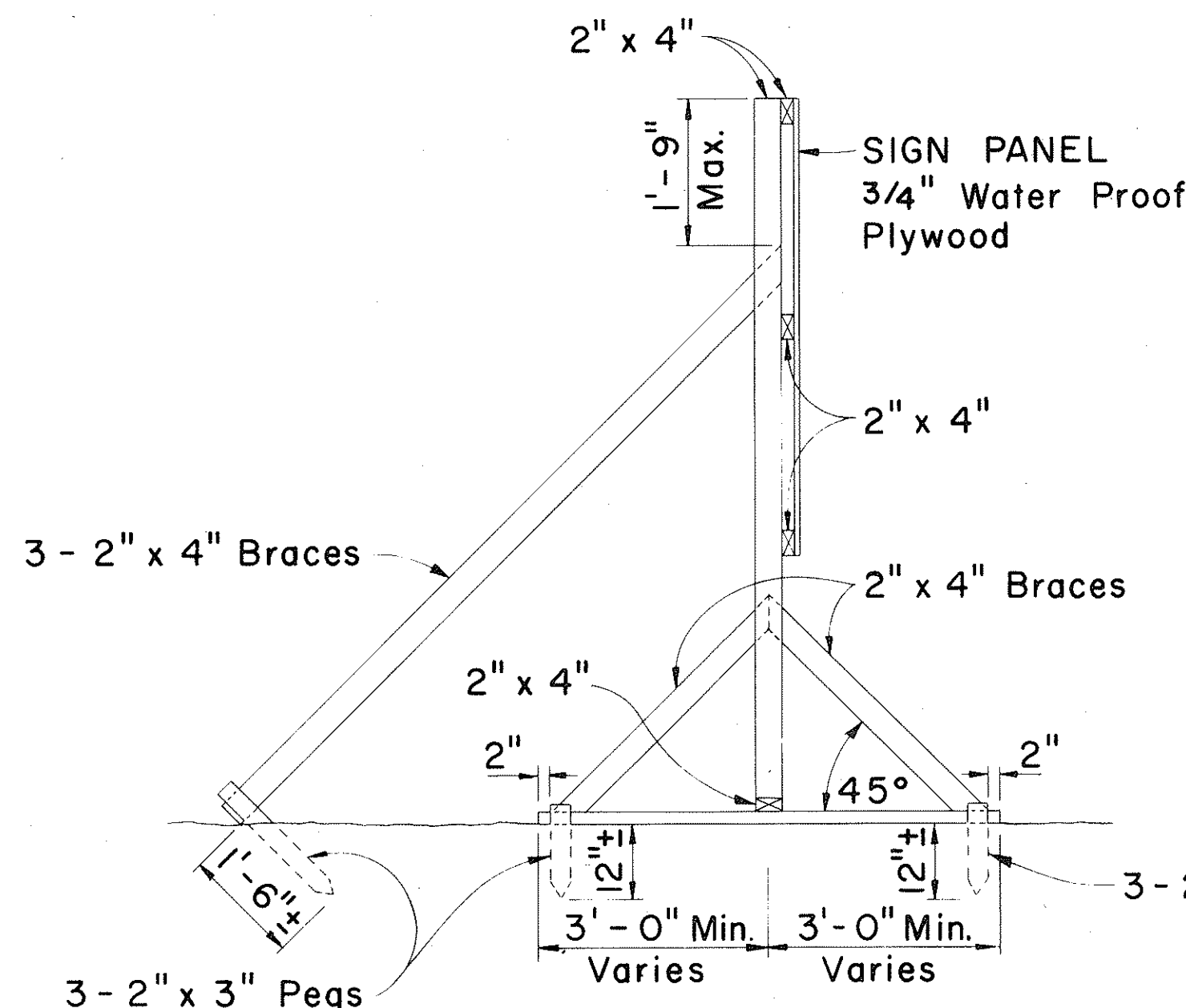
Scale: 1/2" = 1'-0"



END VIEW

GENERAL NOTES

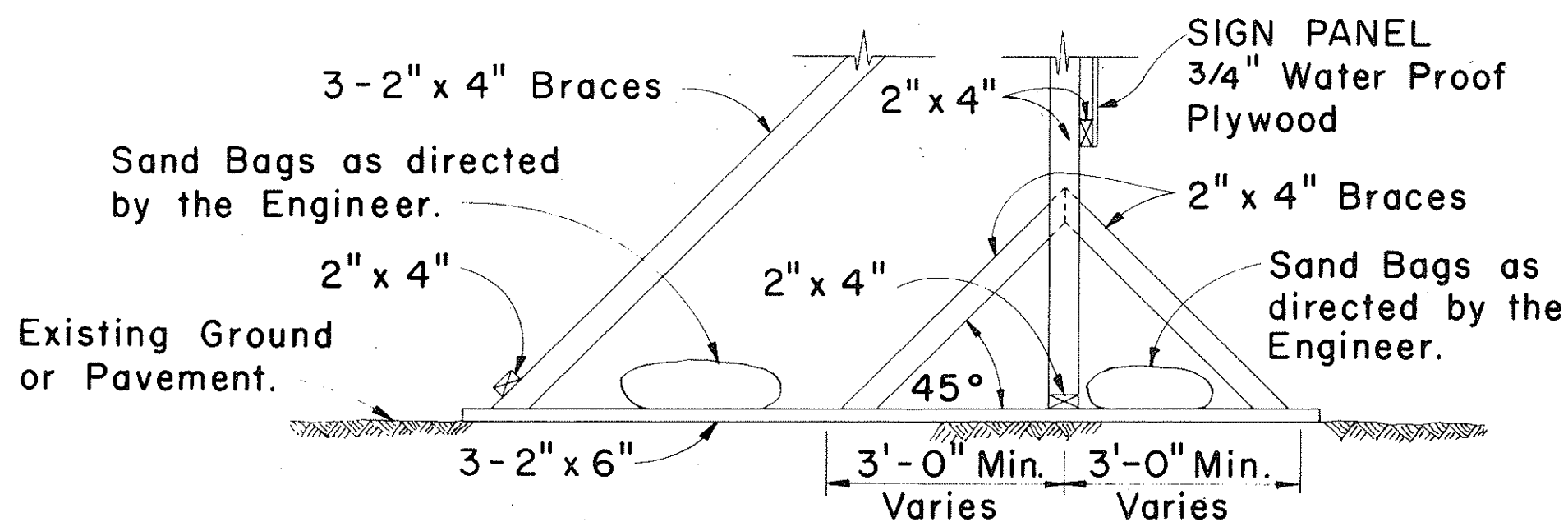
1. The Contractor shall construct, install and maintain the wood barricades at the locations shown on the Plans.
2. The permanent wood barricades shall be left in place or relocated upon completion of the project as ordered by the Engineer and are to become State property.
3. The black and white stripes shall slant downward toward the side on which traffic is to pass.



SIDE VIEW

(SIGN FRAME ANCHORED IN GROUND)

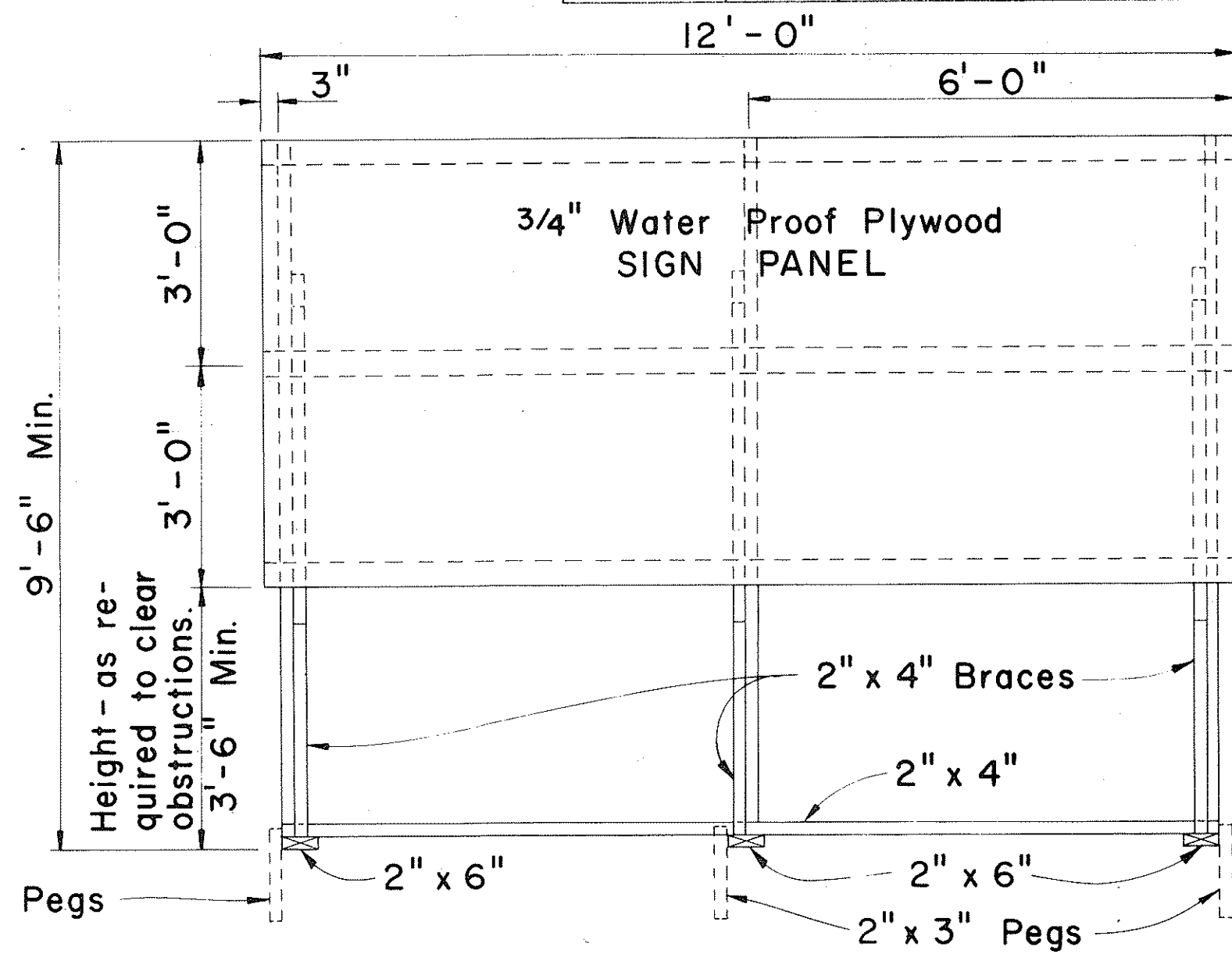
Scale: 1/2" = 1'-0"



SIDE VIEW

(SIGN FRAME WEIGHTED DOWN)

Scale: 1/2" = 1'-0"



FRONT VIEW

Scale: 1/2" = 1'-0"

GENERAL NOTES

1. The sign legend shall be black on white background except for the Interstate Route marker which shall be as shown on the plan.
2. The Contractor shall construct, install and maintain the project signs at the locations shown on the Plans and as ordered by the Engineer.
3. Letters shall be Series "C" of the sizes shown on the Plan and shall conform with the "Standard Alphabet for Highway Signs", Bureau of Public Roads, 1966.
4. The Contractor shall fill in the proper numerals in place of ciphers as ordered by the Engineer.

APPROVAL RECOMMENDED:

Erich Tanaka
TRAFFIC ENGINEER

12/29/69
DATE

APPROVED:

John J. Schell
ASSISTANT CHIEF, ENGINEERING

12-30-69
DATE

NO	REVISION	APPROVED BY	DATE
1	Reduce sign width to 12'-0"	H.T.	9-3-10
2	Delete "Bureau of Public Roads"	H.T.	9-29-10
3	Add Note No. 3 for Barricades	H.T.	5-4-11

STATE OF HAWAII
DEPARTMENT OF TRANSPORTATION
HIGHWAYS DIVISION

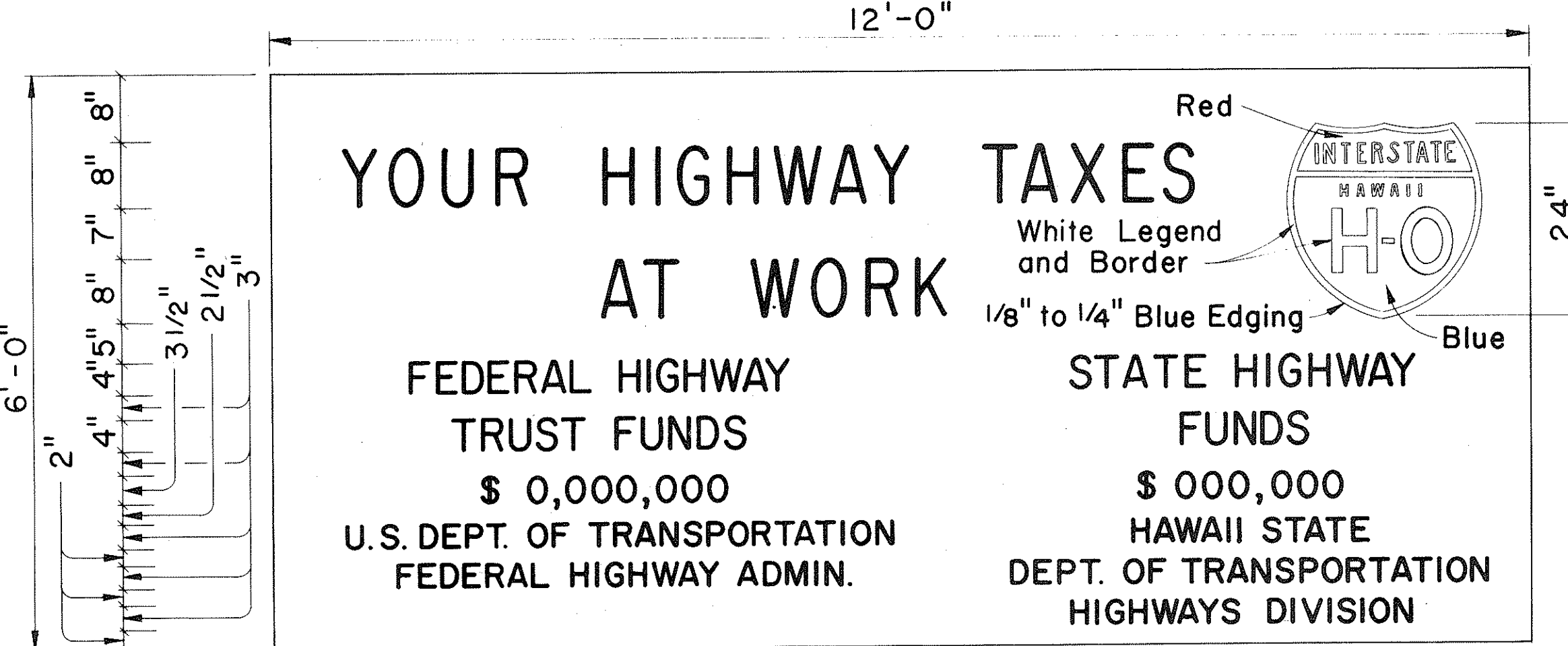
TYPICAL DETAILS

CONSTRUCTION IDENTIFICATION SIGN
AND
WOOD BARRICADES

SCALE: As Shown

DATE:

SHEET No. 1 OF 1 SHEETS DT800



SIGN PANEL

Scale: 3/4" = 1'-0"

INTERSTATE SYSTEM CONSTRUCTION IDENTIFICATION SIGN

Scale: As Shown

DATE	12/29/69
DRAWN BY	J. J. Schell
DESIGNED BY	J. J. Schell
NOTED BY	J. J. Schell
CHECKED BY	J. J. Schell
NO.	1