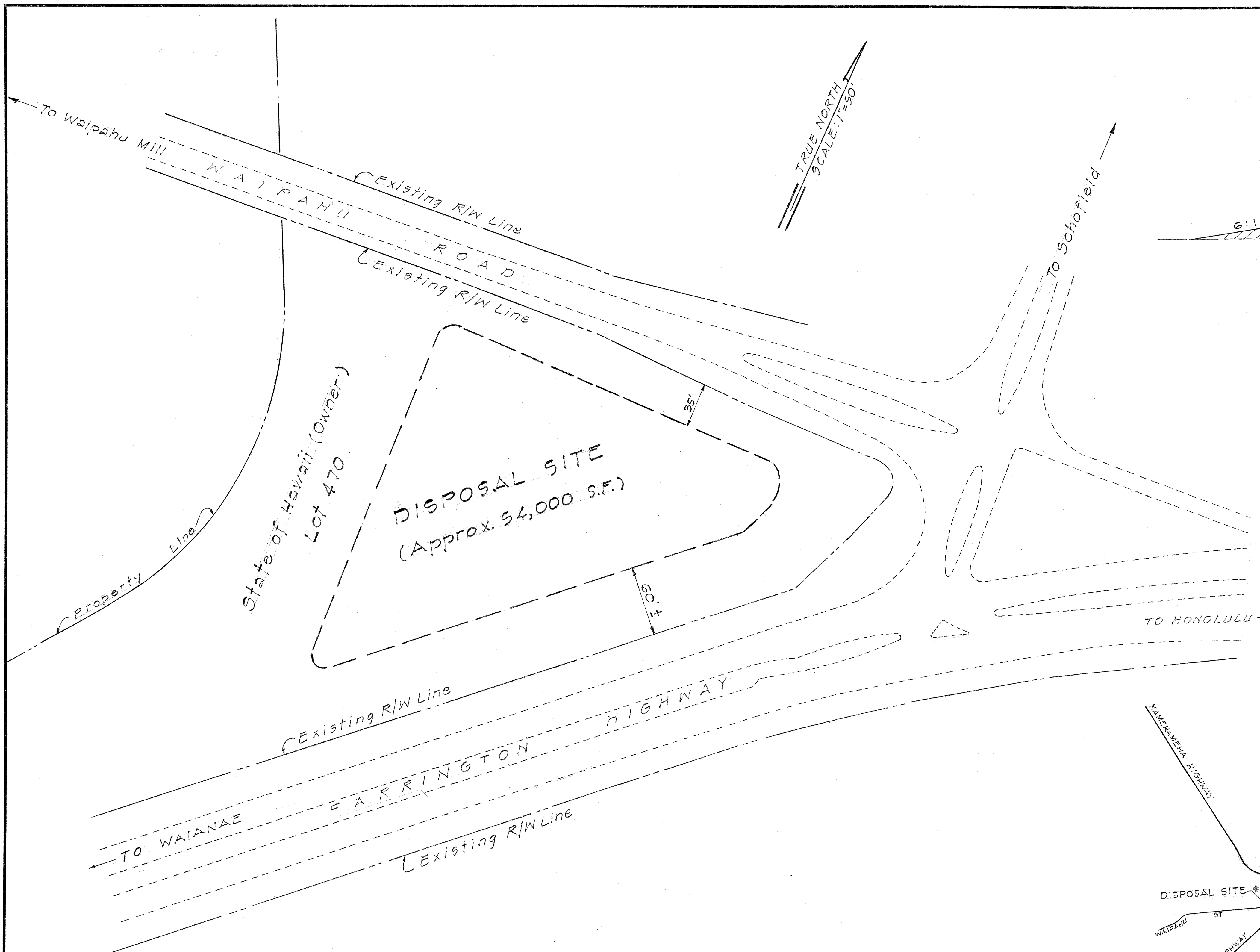
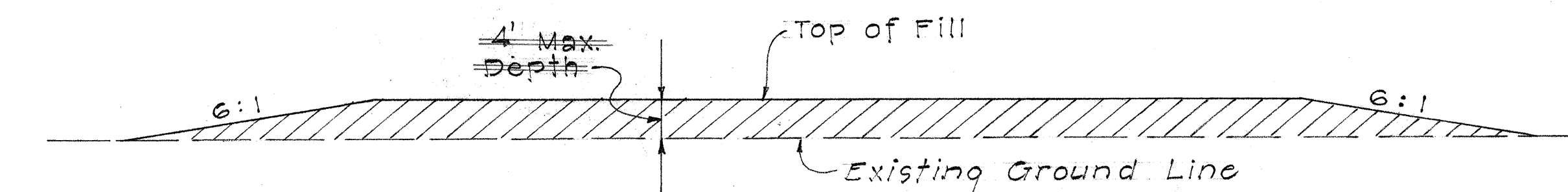


FED. ROAD DIST. NO.	STATE	FED. AID PROJ. NO.	FISCAL YEAR	SHEET NO.	TOTAL SHEETS
HAWAII	HAW.	1-HI-1(32):5 UNIT 3	1967	11A	99



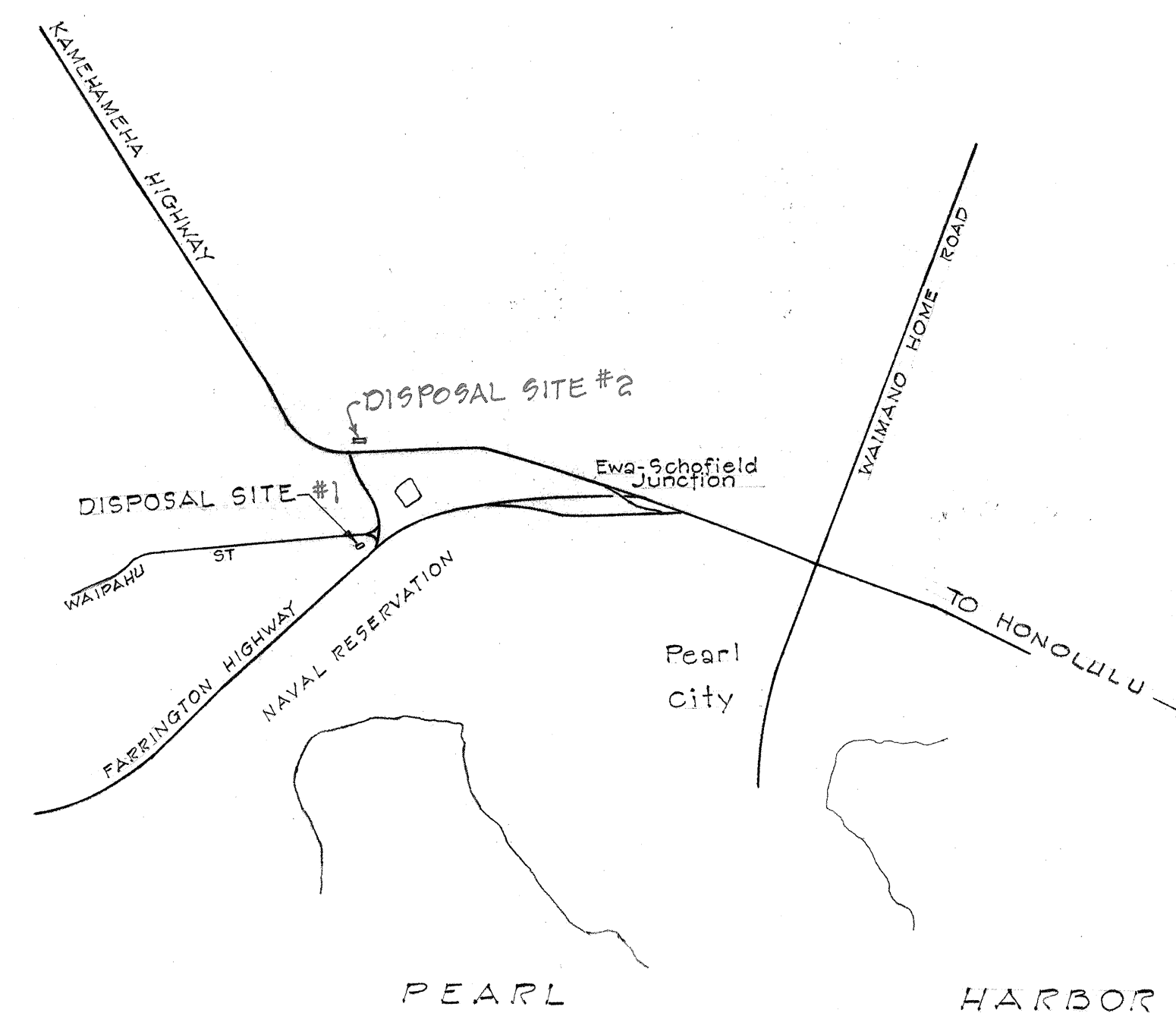
LOCATION PLAN



TYPICAL SECTION THRU DISPOSAL SITE
NOT TO SCALE

GENERAL NOTES

1. Waste material shall be deposited uniformly throughout disposal site and shall be sloped to drain as directed by the Engineer.



VICINITY PLAN

STATE OF HAWAII
DEPARTMENT OF TRANSPORTATION
HIGHWAYS DIVISION

DISPOSAL SITE PLAN

INTERSTATE ROUTE H-1
F.A.I. PROJ. NO. I-HI-1 (32):5, UNIT 3

SCALE: AS SHOWN DATE: AUG. 1967

SHEET No. 11 OF 11 SHEETS

111A

DESIGNED BY	DATE
DRAWN BY	
CHECKED BY	
NOTED BY	
NO.	