

GENERAL NOTES

- All existing pavement, driveways and sidewalks in the right shoulder of Frontage Road "J" between Sta. 6+00 and 19+50 shall be removed. This work shall be incidental to Roadway Excavation. Such scarified areas shall be filled with top soil and sodded with grass.
- All ends of abandoned drainage culverts and abandoned pipes shall be sealed with Class "D-1" concrete or brick wall set in cement mortar of thickness equal to at least one-half the pipe diameter. Class "D-1" concrete or brick wall for sealing culverts and pipes will not be paid for separately, but shall be incidental to the various contract pay items for culverts.
- Portland cement concrete areas designated on the plans as 4" plain concrete, plain concrete sidewalks or plain concrete walkway shall be measured and paid for under Item No. 7601 Plain Concrete Sidewalk.
- All existing Lava Rock and Precast Concrete Curbs removed in the Roadway Excavation and not reused in Reconstructed Curbs shall be neatly stockpiled within the project site as directed by the Engineer. Stockpiling shall be incidental to Salvaging Existing Curbs.
- Top slab of catch basins shall be sloped to the finished grade of sidewalk, shoulder or median.
- Electric and telephone poles in the way of construction operations shall be moved by the respective owners only.
- Azimuths and coordinates are referred to Punchbowl "Trig." station.
- Bench Marks are referred to Mean Sea Level datum.
- For estimated quantities of the following items at various locations on the project, see Sheet No.'s as noted:
 - Curbs and Gutters - Sht. No. 32
 - Metal Guard Rails - Sht. No. 33
 - Chain Link Fence - Sht. No. 32
 - Driveways - Sht. No. 34
- Construct Concrete Barrier at Catch Basins to permit removal of the Grates.
- Centerline Monuments shall be installed on points 3 foot offset left of the Freeway Baseline.

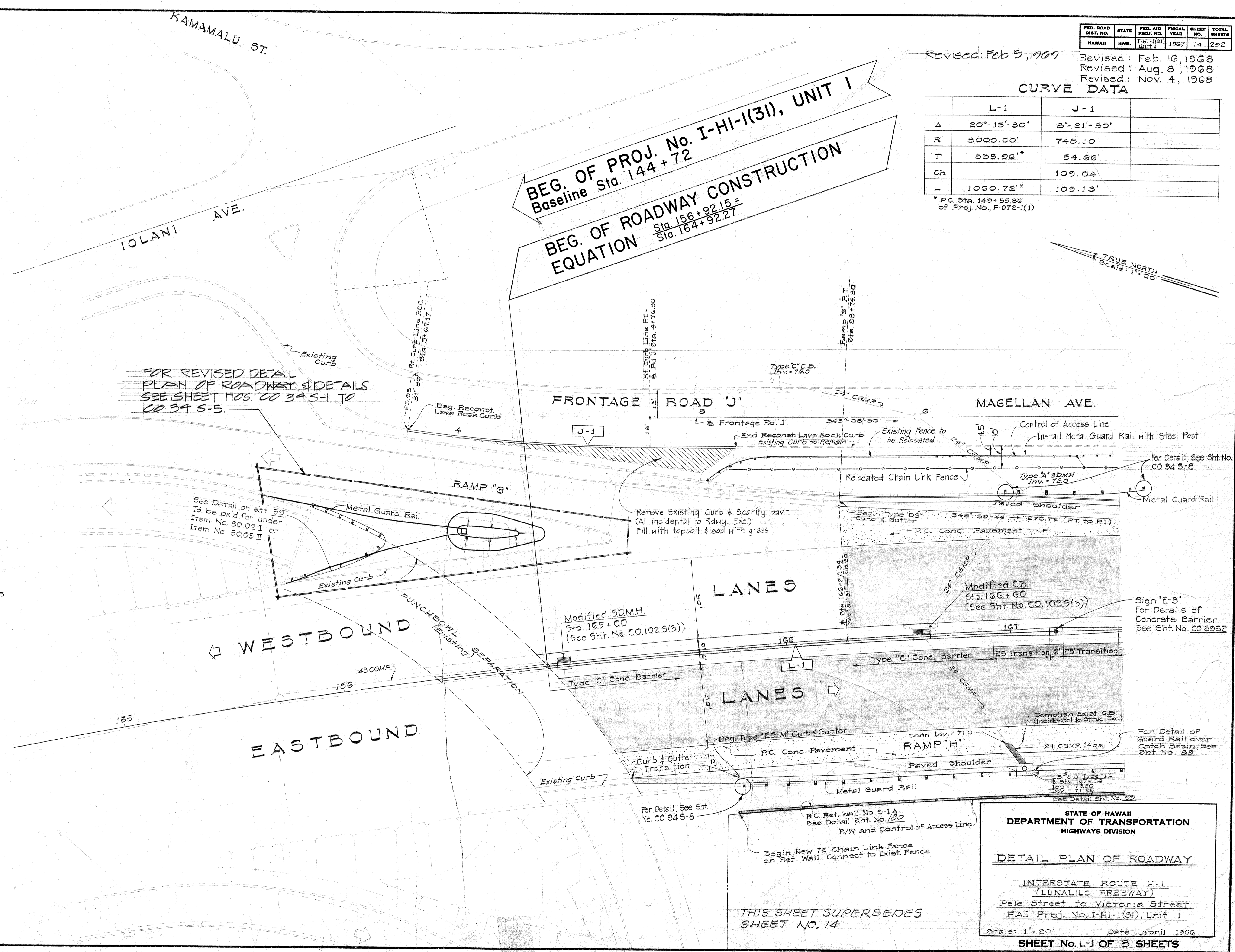
FED. ROAD DIST. NO.	STATE	FED. AID PROJ. NO.	FISCAL YEAR	SHEET NO.	TOTAL SHEETS
HAWAII	HAW.	I-HI-1(31) Unit 1	1967	14	202

Revised: Feb 5, 1967
 Revised: Feb. 16, 1968
 Revised: Aug. 8, 1968
 Revised: Nov. 4, 1968

CURVE DATA

	L-1	J-1	
Δ	20°-15'-30"	8°-21'-30"	
R	3000.00'	748.10'	
T	535.96'	54.66'	
Ch		109.04'	
L	1060.72'	109.13'	

* P.C. Sta. 149+55.96 of Proj. No. F-072-1(1)



FOR REVISED DETAIL PLAN OF ROADWAY & DETAILS SEE SHEET NOS. CO 34 S-1 TO CO 34 S-5.

See Detail on sht. 33 To be paid for under Item No. 80.02 I or Item No. 80.05 II

For Detail, See Sht. No. CO 34 S-8

Sign "E-3" For Details of Concrete Barrier See Sht. No. CO 33 S-2

For Detail of Guard Rail over Catch Basin, See Sht. No. 32

For Detail, See Sht. No. CO 34 S-8

See Detail Sht. No. 32

STATE OF HAWAII
 DEPARTMENT OF TRANSPORTATION
 HIGHWAYS DIVISION

DETAIL PLAN OF ROADWAY

INTERSTATE ROUTE H-1
 (LUNALILO FREEWAY)
 Pele Street to Victoria Street
 F.A.I. Proj. No. I-HI-1(31), Unit 1

Scale: 1" = 20' Date: April, 1966

SHEET No. L-1 OF 3 SHEETS

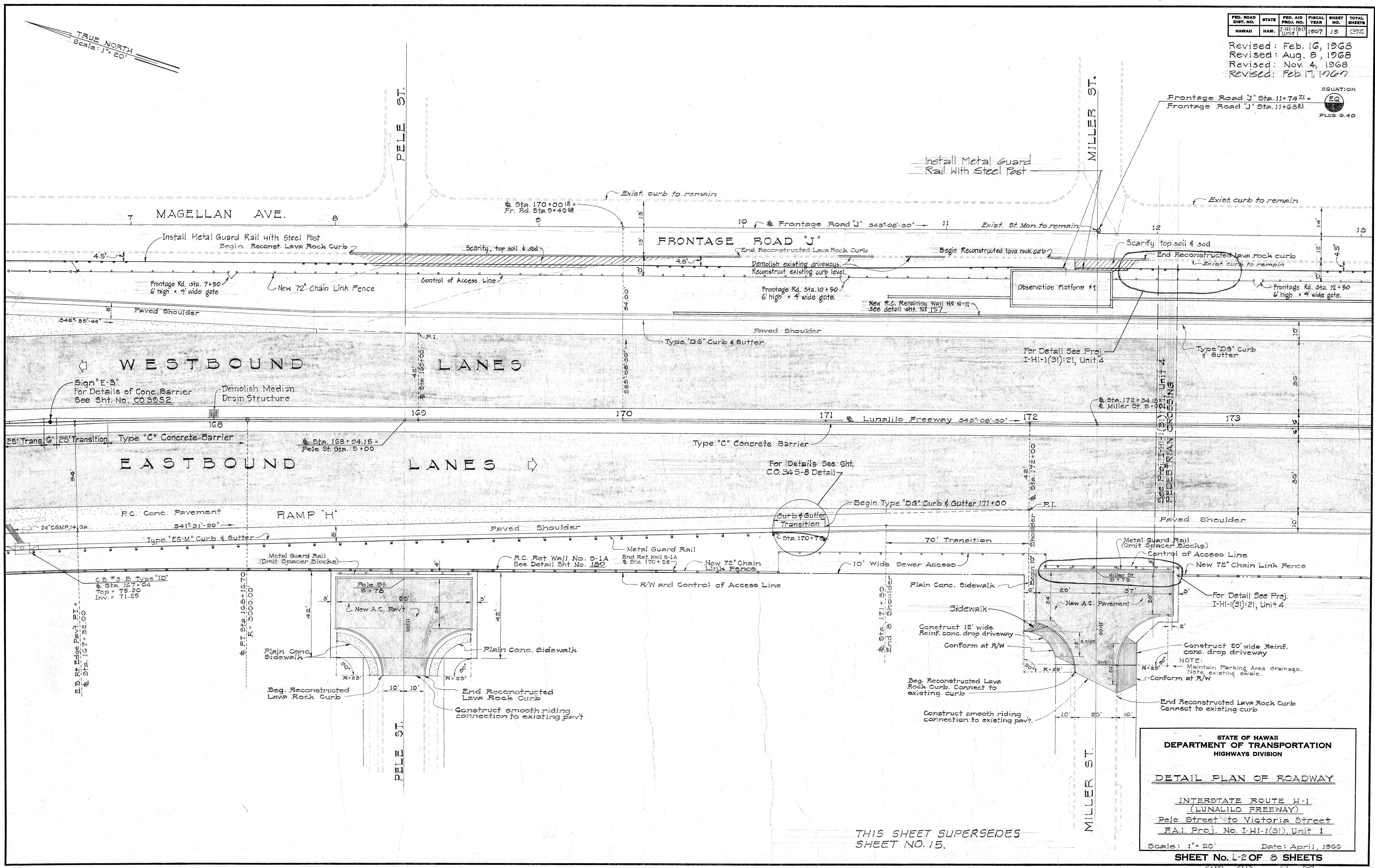
THIS SHEET SUPERSEDES SHEET NO. 14

DATE	_____
SURVEY PLOTTED BY	_____
FRACED BY	_____
DESIGNED BY	_____
NOTE BOOK	_____
QUANTITIES BY	_____
CHECKED BY	_____
No.	_____

FED. ROAD DIST. NO.	STATE	FED. AID PROJ. NO.	FISCAL YEAR	SHEET NO.	TOTAL SHEETS
HAWAII	HAW.	I-11(31) Unit 1	1967	15	292

Revised: Feb. 16, 1968
 Revised: Aug. 8, 1968
 Revised: Nov. 4, 1968
 Revised: Feb. 17, 1969

EQUATION
 PLUS 6.40



DATE	BY

ORIGINAL PLAN
 NOTE BOOK
 NO.

THIS SHEET SUPERSEDES SHEET NO. 15.

STATE OF HAWAII
 DEPARTMENT OF TRANSPORTATION
 HIGHWAYS DIVISION

DETAIL PLAN OF ROADWAY

INTERSTATE ROUTE H-1
 (LUNALILO FREEWAY)
 Pele Street to Victoria Street
 F.A.I. Proj. No. I-11-1(31) Unit 1

Scale: 1" = 20' Date: April, 1968
SHEET NO. 15 OF 3 SHEETS

C O 15

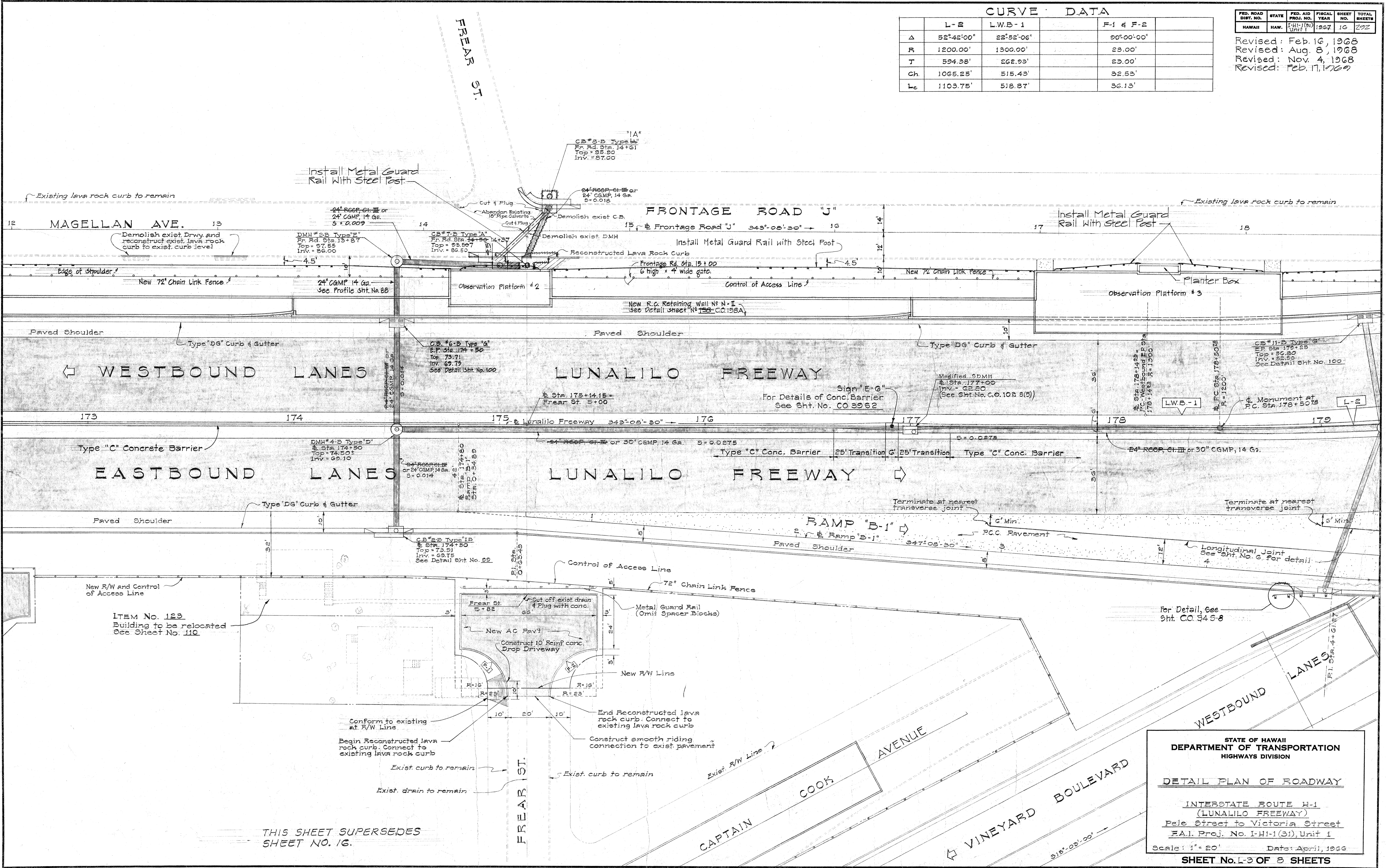
DD-J-1

CURVE DATA

	L-2	L.W.B-1	F-1 & F-2
Δ	52°42'00"	22°52'06"	90°00'00"
R	1200.00'	1300.00'	23.00'
T	594.38'	262.93'	23.00'
Ch	1065.25'	515.43'	32.53'
Lc	1103.75'	518.87'	36.15'

FED. ROAD DIST. NO.	STATE	FED. AID PROJ. NO.	FISCAL YEAR	SHEET NO.	TOTAL SHEETS
HAWAII	HAW.	I-41-1(3) Unit 1	1967	16	202

Revised: Feb. 16, 1968
 Revised: Aug. 8, 1968
 Revised: Nov. 4, 1968
 Revised: Feb. 17, 1969



DATE	BY

ITEM No. 123
 Building to be relocated
 See Sheet No. 119

THIS SHEET SUPERSEDES
 SHEET NO. 16.

STATE OF HAWAII
 DEPARTMENT OF TRANSPORTATION
 HIGHWAYS DIVISION

DETAIL PLAN OF ROADWAY

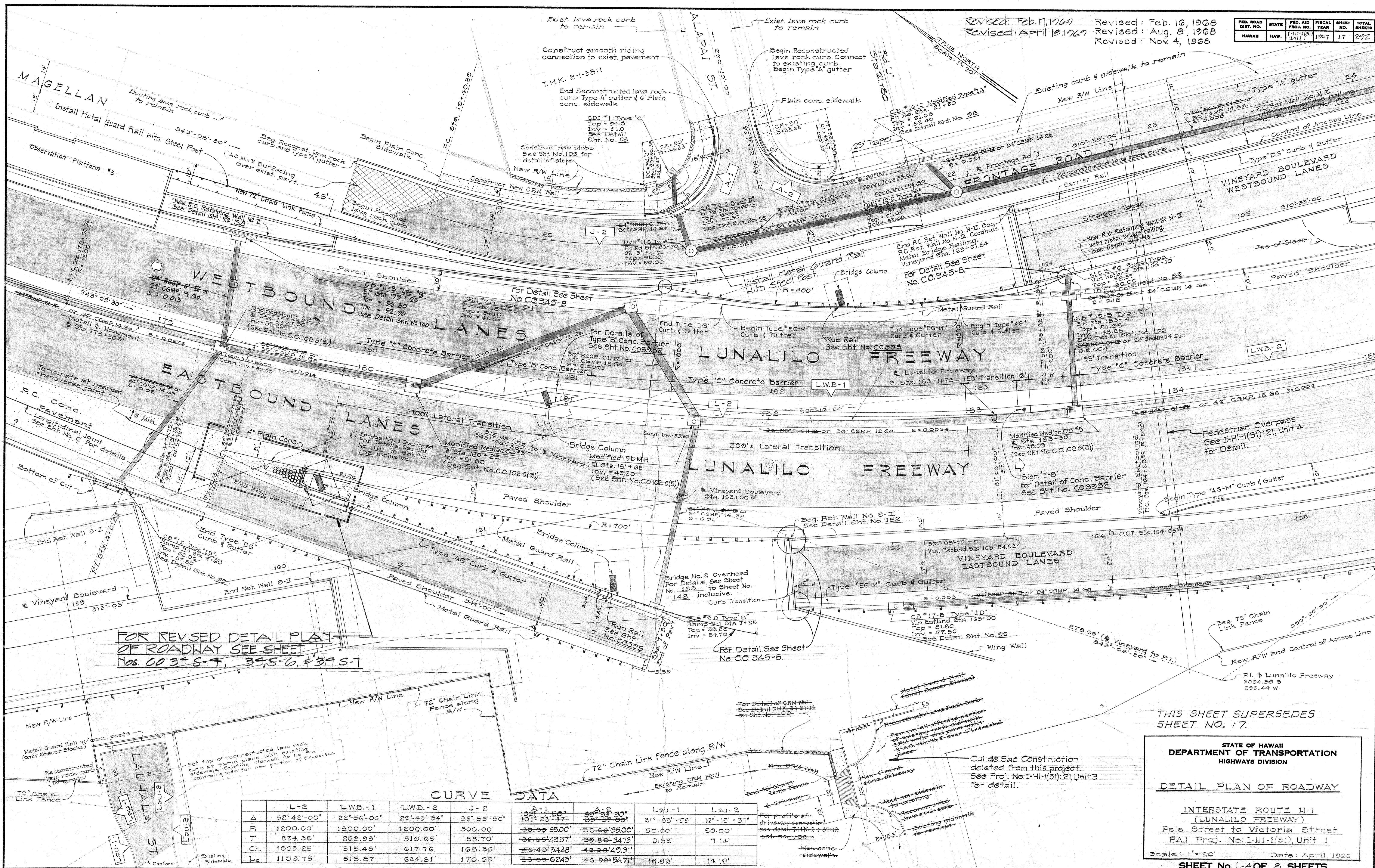
INTERSTATE ROUTE H-1
 (LUNALILO FREEWAY)
 Pele Street to Victoria Street
 F.A.I. Proj. No. I-41-1(3), Unit 1

Scale: 1" = 20' Date: April, 1968

SHEET No. 1-3 OF 8 SHEETS

Revised: Feb. 17, 1968
 Revised: April 18, 1968
 Revised: Feb. 16, 1968
 Revised: Aug. 8, 1968
 Revised: Nov. 4, 1968

FED. ROAD DIST. NO.	STATE PROJ. NO.	FED. AID PROJ. UNIT	FISCAL YEAR	SHEET NO.	TOTAL SHEETS
HAWAII	HAW.	1-11(91)	1967	17	242



FOR REVISED DETAIL PLAN
 OF ROADWAY SEE SHEET
 Nos. CO 345-4, 345-6, & 345-7

CURVE DATA

	L-2	LWB-1	LWB-2	J-2	Lau-1	Lau-2
A	52°42'-00"	22°56'-06"	29°49'-54"	32°35'-30"	101°23'-44"	29°37'-09"
R	1200.00'	1300.00'	1200.00'	900.00'	36°00'35.00'	36°00'35.00'
T	594.38'	262.23'	312.65'	88.70'	36°55'43.37'	36°55'43.37'
Ch.	1965.25'	518.43'	617.76'	168.36'	46°43'54.48'	46°43'54.48'
Lc	1103.75'	518.87'	624.81'	170.63'	53°03'02.43'	46°52'54.71'

THIS SHEET SUPERSEDES SHEET NO. 17.

STATE OF HAWAII
 DEPARTMENT OF TRANSPORTATION
 HIGHWAYS DIVISION

DETAIL PLAN OF ROADWAY

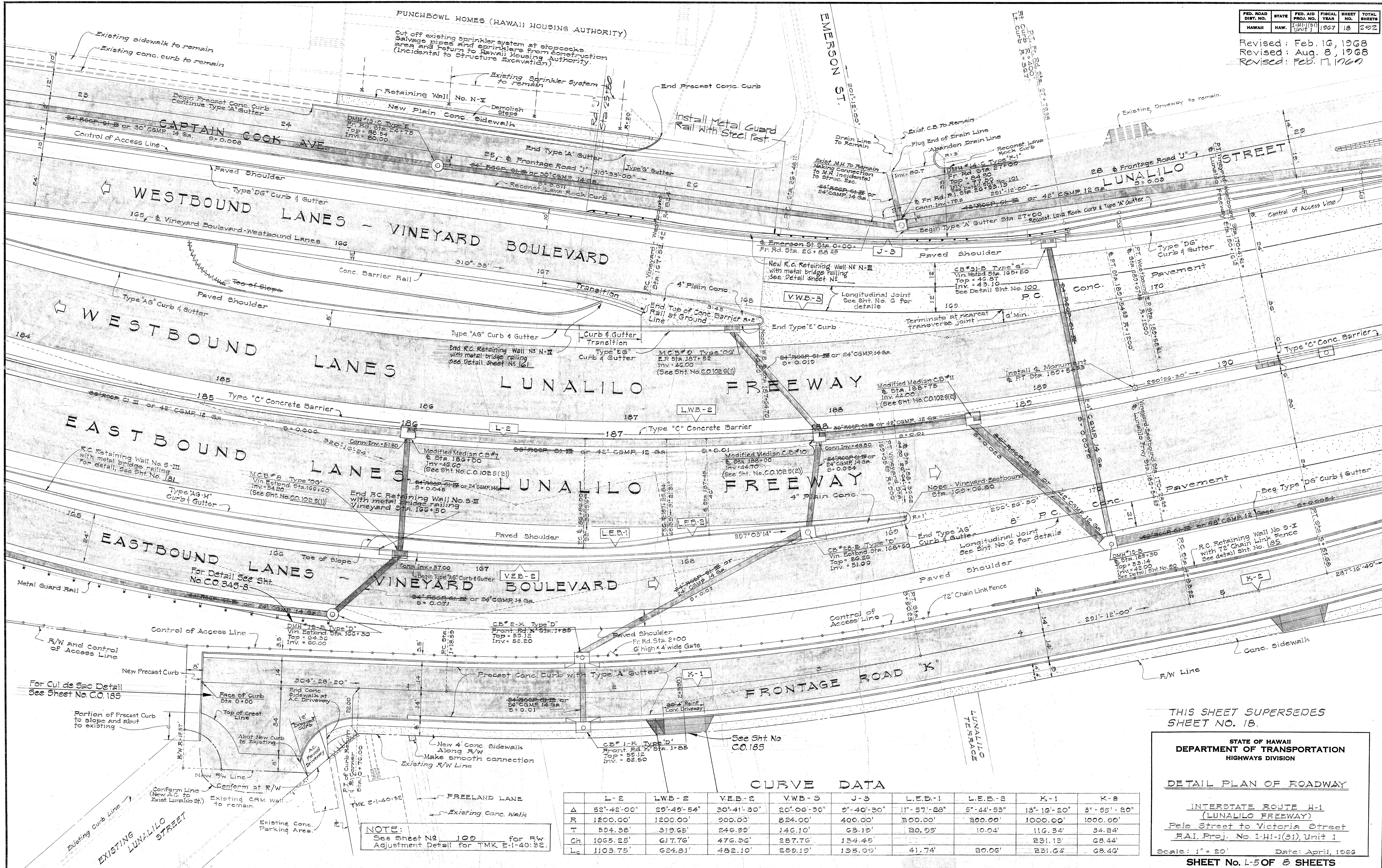
INTERSTATE ROUTE H-1
 (LUNALILO FREEWAY)
 Pele Street to Victoria Street
 F.A.I. Proj. No. I-HI-1(91) Unit 1

Scale: 1" = 20' Date: April, 1968
SHEET No. L-4 OF 8 SHEETS

DATE: _____
 SURVEY PLOTTED BY: _____
 DRAWN BY: _____
 CHECKED BY: _____
 NOTE BOOK QUANTITIES BY: _____

FED. ROAD DIST. NO.	STATE	FED. AID PROJ. NO.	FISCAL YEAR	SHEET NO.	TOTAL SHEETS
HAWAII	HAW.	1-HI-1(31) Unit 1	1967	18	202

Revised: Feb. 16, 1968
 Revised: Aug. 8, 1968
 Revised: Feb. 17, 1969



DATE	*****
DESIGNED BY	
TRACED BY	
NOTE BOOK	
CHECKED BY	
NO.	

NOTE:
 See Sheet No. 100 for R/W Adjustment Detail for TMK 2-1-40:32.

	L-2	LWB-2	V.E.B.-2	V.W.B.-3	J-3	L.E.B.-1	L.E.B.-2	K-1	K-2
Δ	52°-42'-00"	29°-49'-54"	30°-41'-30"	20°-06'-30"	9°-40'-30"	11°-57'-28"	8°-44'-53"	13°-10'-20"	3°-55'-20"
R	1200.00'	1200.00'	300.00'	824.00'	400.00'	300.00'	300.00'	1000.00'	1000.00'
T	834.38'	319.65'	246.99'	146.10'	69.19'	20.95'	10.04'	116.34'	34.24'
Ch	1065.25'	617.76'	476.96'	287.76'	154.45'			231.13'	68.44'
Lc	1103.75'	624.81'	482.10'	289.19'	155.09'	41.74'	20.06'	231.64'	68.46'

THIS SHEET SUPERSEDES SHEET NO. 18.

STATE OF HAWAII
 DEPARTMENT OF TRANSPORTATION
 HIGHWAYS DIVISION

DETAIL PLAN OF ROADWAY

INTERSTATE ROUTE H-1
 (LUNALILO FREEWAY)
 Pele Street to Victoria Street
 F.A.I. Proj. No. I-HI-1(31) Unit 1

Scale: 1" = 20' Date: April, 1968

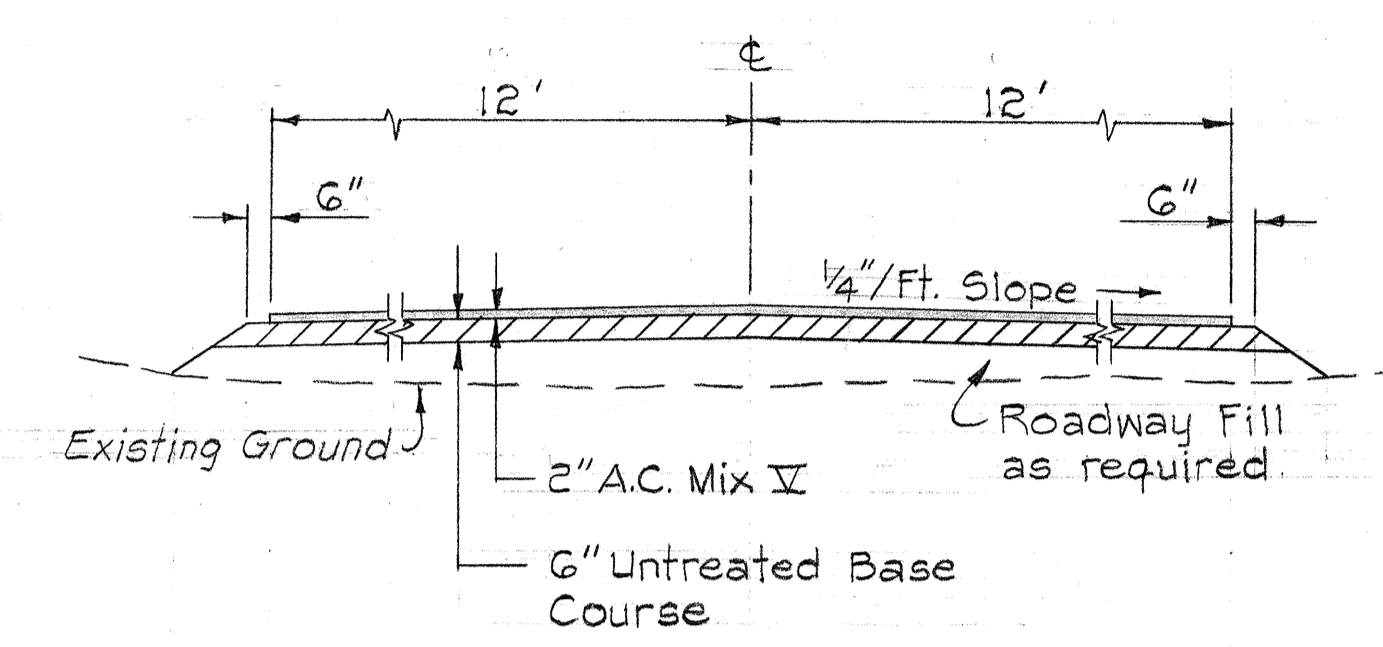
SHEET No. L-5 OF 8 SHEETS

FED. ROAD DIST. NO.	STATE	FED. AID PROJ. NO.	FISCAL YEAR	SHEET NO.	TOTAL SHEETS
HAWAII	HAW.	I-HI-1(31) Unit 1	1968	CO189	292

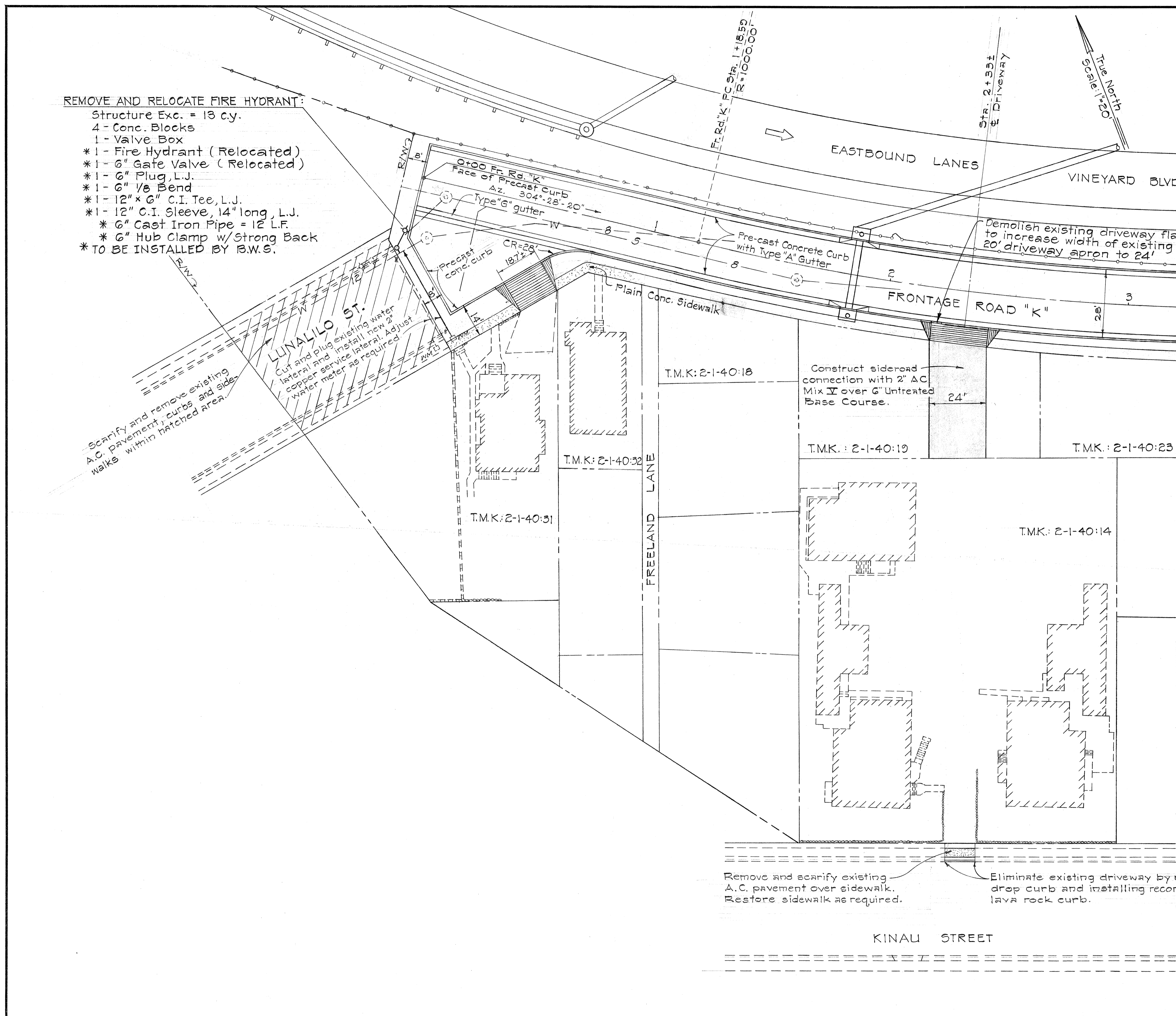
Revised: May 29, 1969

REMOVE AND RELOCATE FIRE HYDRANT:

- Structure Exc. = 13 c.y.
- 4 - Conc. Blocks
- 1 - Valve Box
- * 1 - Fire Hydrant (Relocated)
- * 1 - 6" Gate Valve (Relocated)
- * 1 - 6" Plug, L.J.
- * 1 - 6" 1/8 Bend
- * 1 - 12" x 6" C.I. Tee, L.J.
- * 1 - 12" C.I. Sleeve, 14" long, L.J.
- * 6" Cast Iron Pipe = 12 L.F.
- * 6" Hub Clamp w/Strong Back
- * TO BE INSTALLED BY B.W.S.



TYPICAL SECTION OF SIDE ROAD CONNECTION TO TMK: 2-1-40:14
Scale: 1/4" = 1'-0"



SURVEY PLOTTED BY	DATE
TRACED BY	
DESIGNED BY	
QUANTITIES BY	
CHECKED BY	
ORIGINAL PLAN	
NOTE BOOK	
No.	

Remove and scarify existing A.C. pavement over sidewalk. Restore sidewalk as required.

Eliminate existing driveway by removing drop curb and installing reconstructed lava rock curb.

THIS SHEET IS A SUPPLEMENT TO SHEET NO. CO18 AND THE CONTRACT PLANS.

STATE OF HAWAII
DEPARTMENT OF TRANSPORTATION
HIGHWAYS DIVISION

DETAIL PLAN OF ROADWAY
FRONTAGE ROAD "K"
STA. 0+00 TO 3+00

INTERSTATE ROUTE H-1
Pele Street to Victoria Street
F.A.I. Proj. No. I-HI-1(31):21, Unit 1

Scale: As Shown Date: Nov. 21, 1968

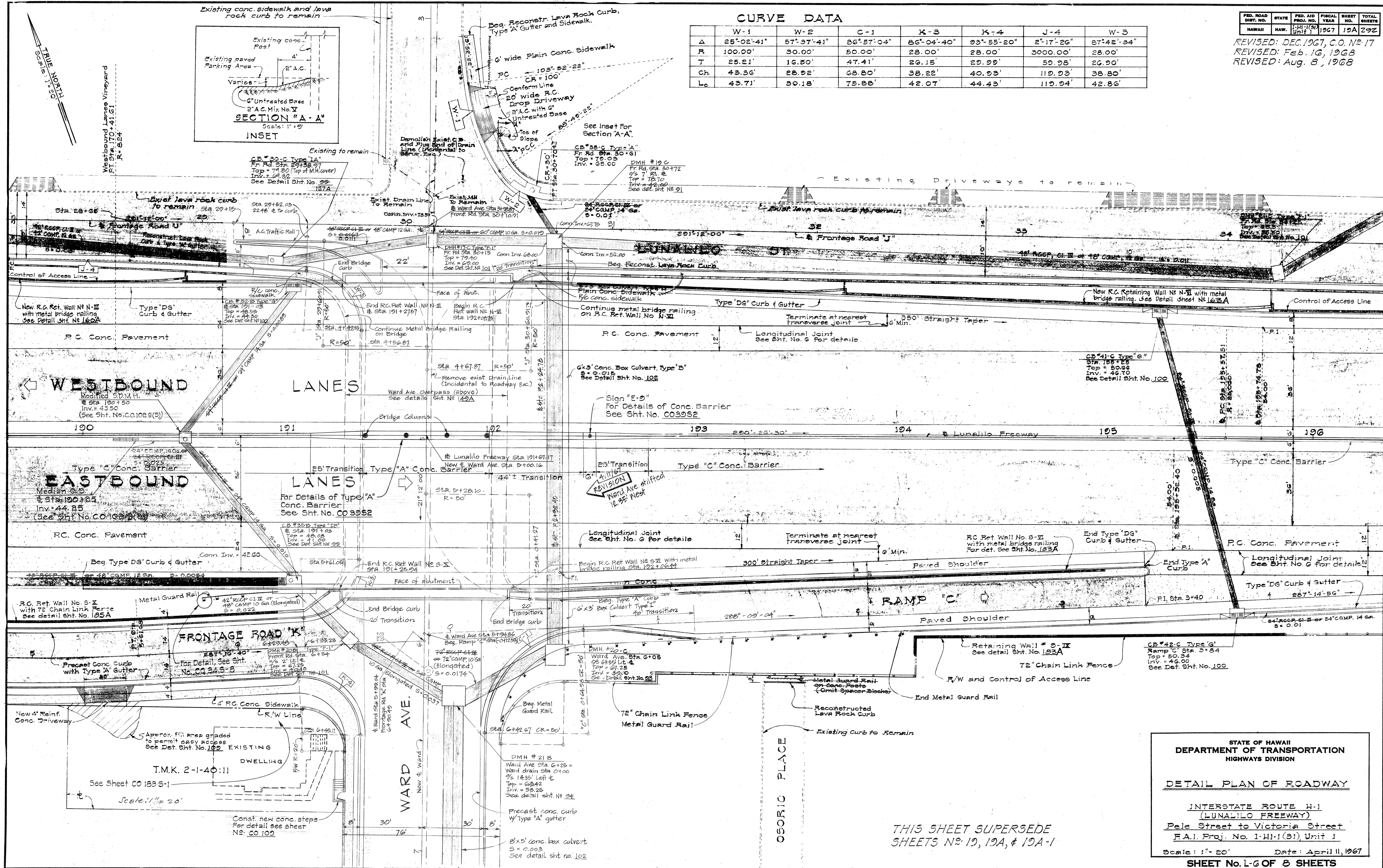
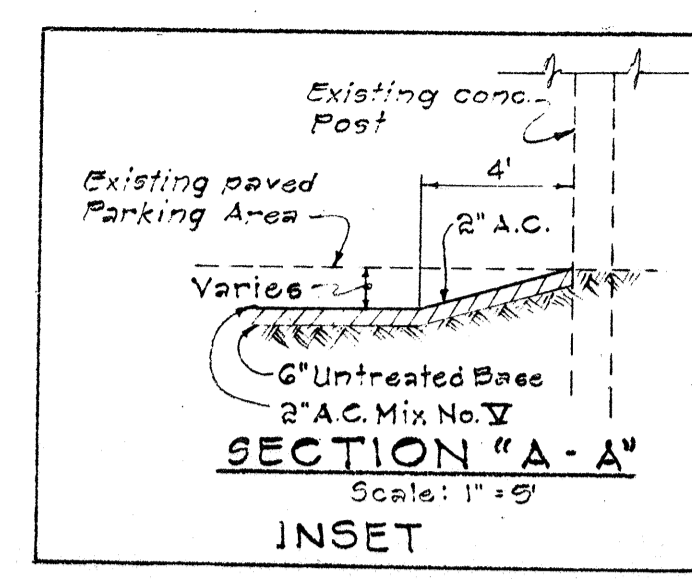
SHEET No. OF SHEETS

FED. ROAD DIST. NO.	STATE	FED. AID PROJ. NO.	FISCAL YEAR	SHEET NO.	TOTAL SHEETS
HAWAII	HAW.	101(3)	1967	19A	292

REVISED: DEC. 1967, C.O. No. 17
 REVISED: Feb. 16, 1968
 REVISED: Aug. 8, 1968

CURVE DATA

	W-1	W-2	C-1	K-3	K-4	J-4	W-3
Δ	25°02'41"	57°37'41"	86°57'04"	86°04'40"	93°55'20"	2°17'26"	87°42'34"
R	100.00'	30.00'	50.00'	28.00'	28.00'	3000.00'	28.00'
T	25.21'	16.50'	47.41'	26.15'	29.99'	59.98'	26.90'
Ch.	43.36'	28.92'	68.80'	38.22'	40.93'	119.93'	38.80'
Lc	43.71'	30.18'	75.88'	42.07'	44.43'	119.94'	42.86'



DATE	BY

STATE OF HAWAII
 DEPARTMENT OF TRANSPORTATION
 HIGHWAYS DIVISION

DETAIL PLAN OF ROADWAY

INTERSTATE ROUTE H-1
 (LUNALILO FREEWAY)
 Pele Street to Victoria Street
 F.A.I. Proj. No. 1-HI-1(3), Unit 1

Scale: 1" = 20' Date: April 11, 1967

SHEET No. 1-6 OF 8 SHEETS

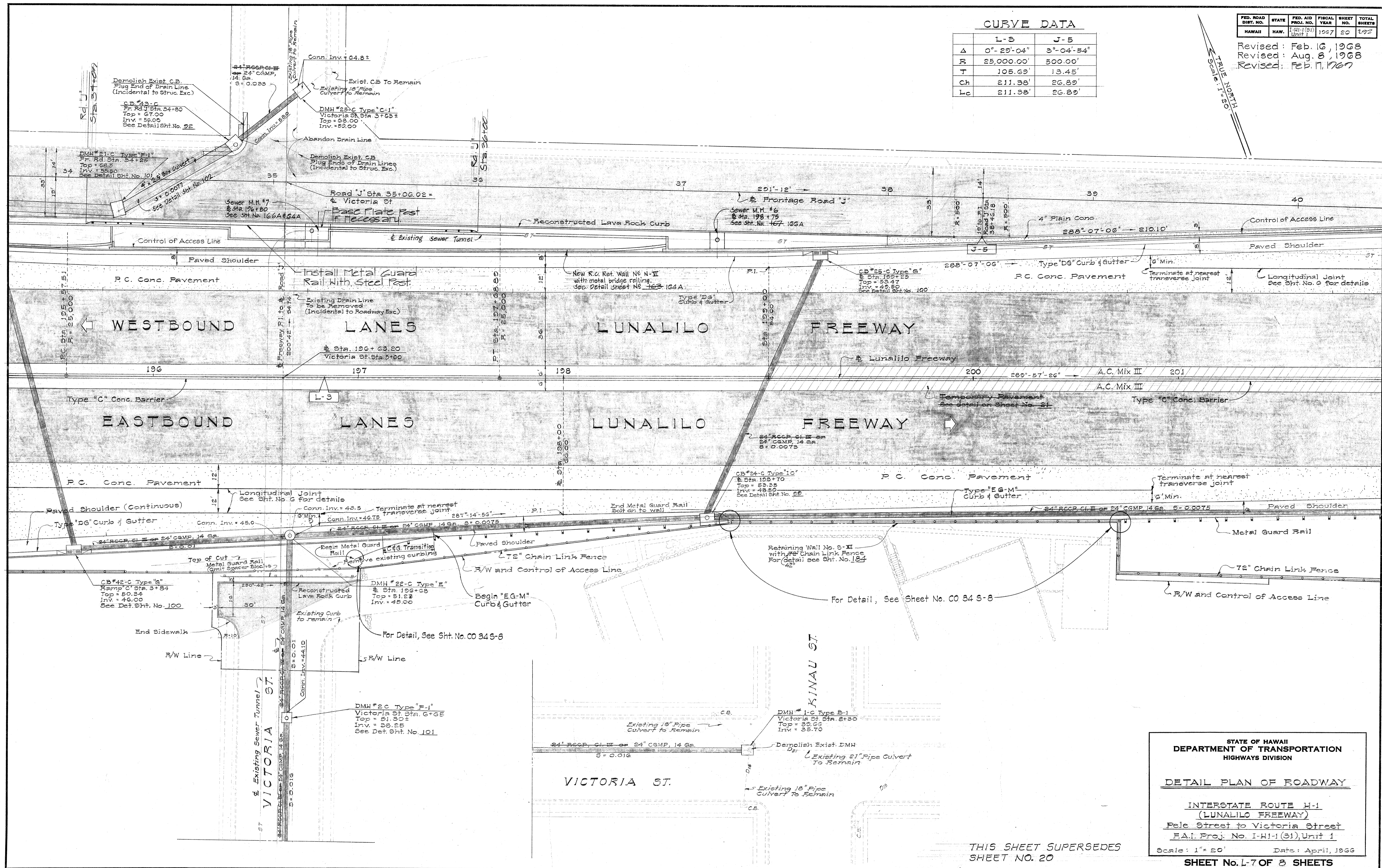
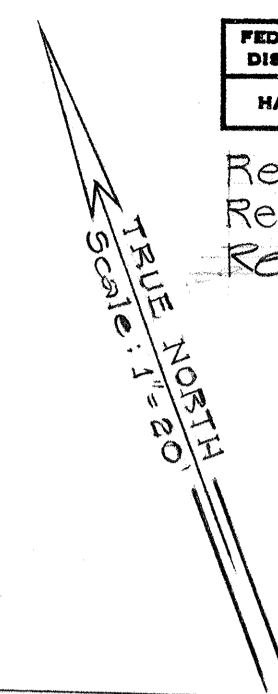
THIS SHEET SUPERSEDE SHEETS No. 19, 19A, & 19A-1

FED. ROAD DIST. NO.	STATE	FED. AID PROJ. NO.	FISCAL YEAR	SHEET NO.	TOTAL SHEETS
HAWAII	HAW.	1-31-1(31) Unit 1	1967	20	192

Revised: Feb. 16, 1968
 Revised: Aug. 8, 1968
 Revised: Feb. 17, 1967

CURVE DATA

	L-5	J-5
Δ	0°-29'-04"	3°-04'-54"
R	25,000.00'	500.00'
T	105.69'	13.45'
CH	211.38'	26.89'
Lc	211.38'	26.89'



DATE
SURVEY PLOTTED BY
PLAN
DESIGNED BY
NOTE BOOK
QUANTITIES BY
CHECKED BY
No.

STATE OF HAWAII
 DEPARTMENT OF TRANSPORTATION
 HIGHWAYS DIVISION

DETAIL PLAN OF ROADWAY

INTERSTATE ROUTE H-1
 (LUNALILO FREEWAY)
 Pele Street to Victoria Street
 F.A.I. Proj. No. I-H1-1(31) Unit 1

Scale: 1" = 20' Date: April, 1966

SHEET No. L-7 OF 3 SHEETS

THIS SHEET SUPERSEDES
 SHEET NO. 20

0020

DS-1-10

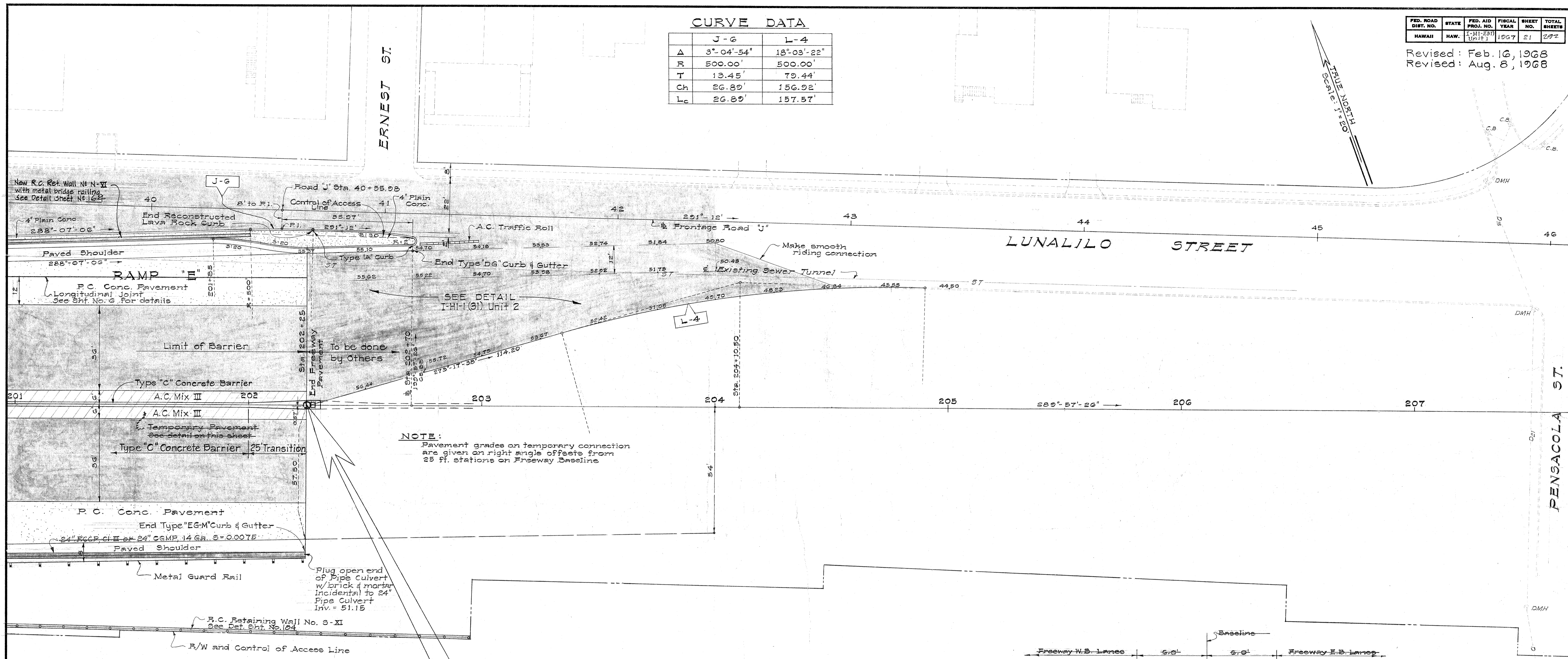
CURVE DATA

	J-6	L-4
Δ	3°-04'-54"	18°-03'-22"
R	500.00'	500.00'
T	13.45'	70.44'
Ch	26.89'	156.02'
Lc	26.89'	157.57'

FED. ROAD DIST. NO.	STATE	FED. AID PROJ. NO.	FISCAL YEAR	SHEET NO.	TOTAL SHEETS
HAWAII	HAW.	I-HI-1(31) Unit 1	1967	21	292

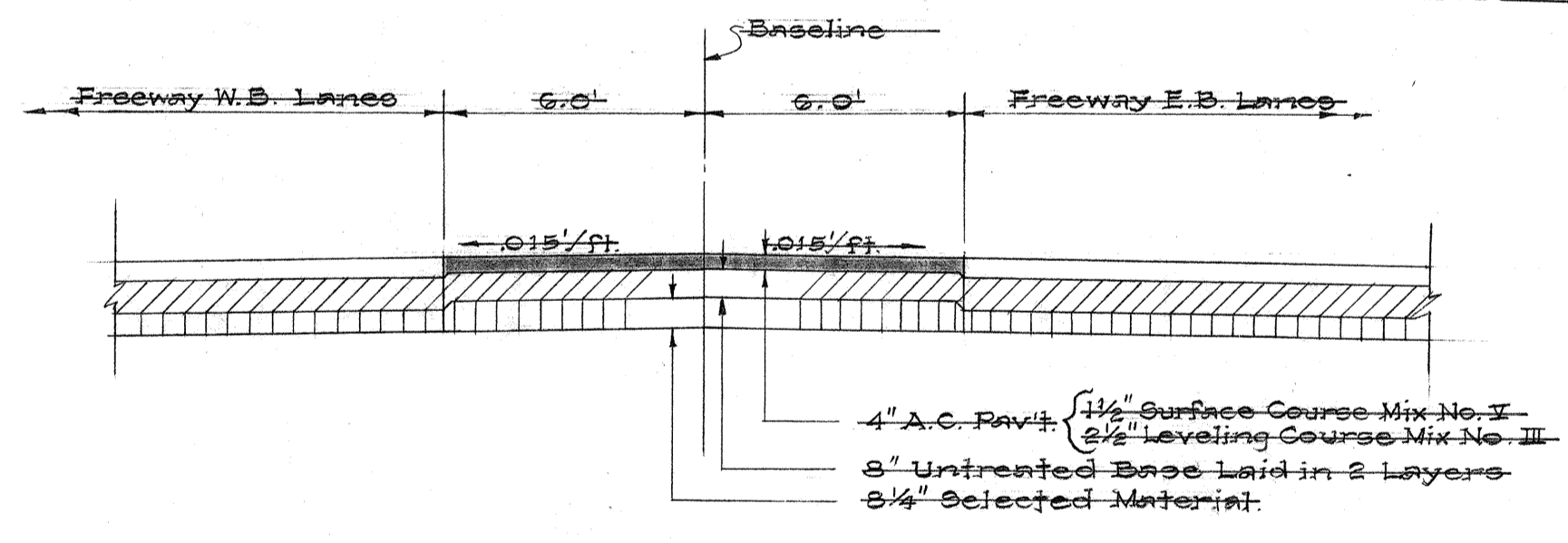
Revised: Feb. 16, 1968
Revised: Aug. 8, 1968

TRUE NORTH
Scale: 1" = 20'

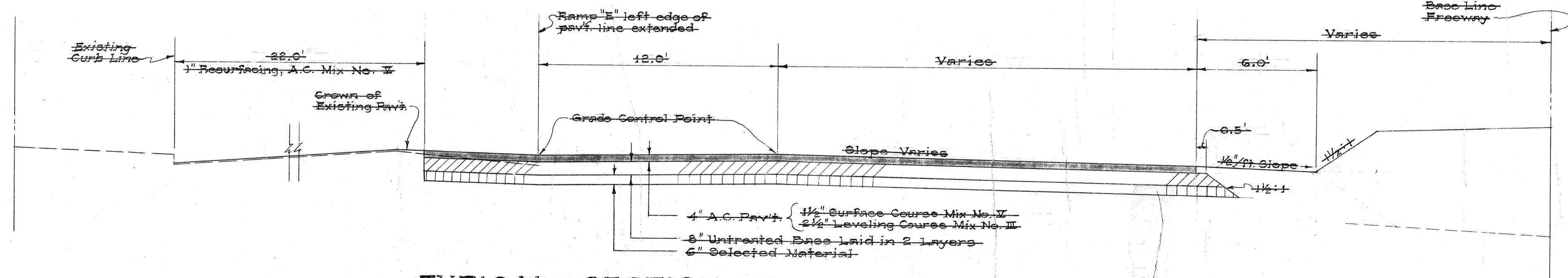


NOTE:
Pavement grades on temporary connection are given on right angle offsets from 25 ft. stations on Freeway Baseline.

END OF PROJ. No. I-HI-1(31), UNIT 1
Baseline Sta. 202+25



TEMPORARY PAVEMENT ON MEDIAN
STA. 199+00 TO STA. 202+25
Scale: 1/4" = 1'-0"



TYPICAL SECTION - TEMPORARY CONNECTION
(STA. 202+25 TO 204+00)
Scale: 1/4" = 1'-0"

THIS SHEET SUPERSEDES SHEET NO. 21.

STATE OF HAWAII
DEPARTMENT OF TRANSPORTATION
HIGHWAYS DIVISION

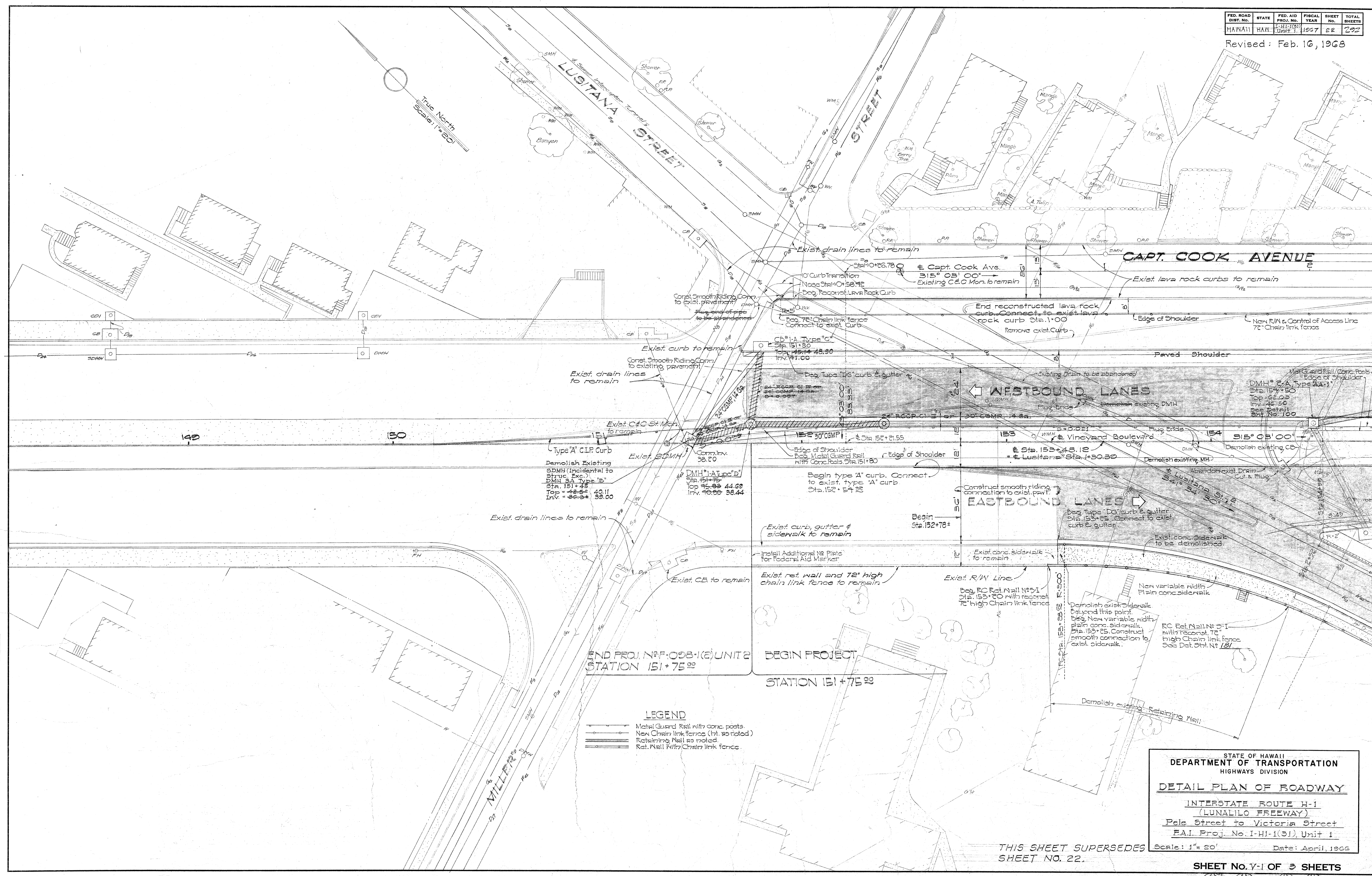
DETAIL PLAN OF ROADWAY

INTERSTATE ROUTE H-1
(LUNALILO FREEWAY)
Pala Street to Victoria Street
F.A.I. Proj. No. I-HI-1(31) Unit 1
Scale: As Shown Date: April, 1968

SURVEY PLOTTED BY	DATE
DRAWN BY	
TRACED BY	
NOTED BY	
CHECKED BY	
NO.	

FED. ROAD DIST. NO.	STATE	FED. AID PROJ. NO.	FISCAL YEAR	SHEET NO.	TOTAL SHEETS
HAWAII	HAWAII	1-11-191	1967	22	292

Revised: Feb. 16, 1968



SURVEY PLOTTED BY	DATE
DESIGNED BY	
TRACED BY	
QUANTITIES BY	
NOTE BOOK NO.	
CHECKED BY	

LEGEND

	Metal Guard Rail with conc. posts
	New Chain Link Fence (ft. as noted)
	Retaining Wall as noted
	Ret. Wall with Chain Link Fence

STATE OF HAWAII
DEPARTMENT OF TRANSPORTATION
HIGHWAYS DIVISION

DETAIL PLAN OF ROADWAY

INTERSTATE ROUTE H-1
(LUNALILO FREEWAY)
Pele Street to Victoria Street
F.A.I. Proj. No. I-HI-1(31), Unit 1

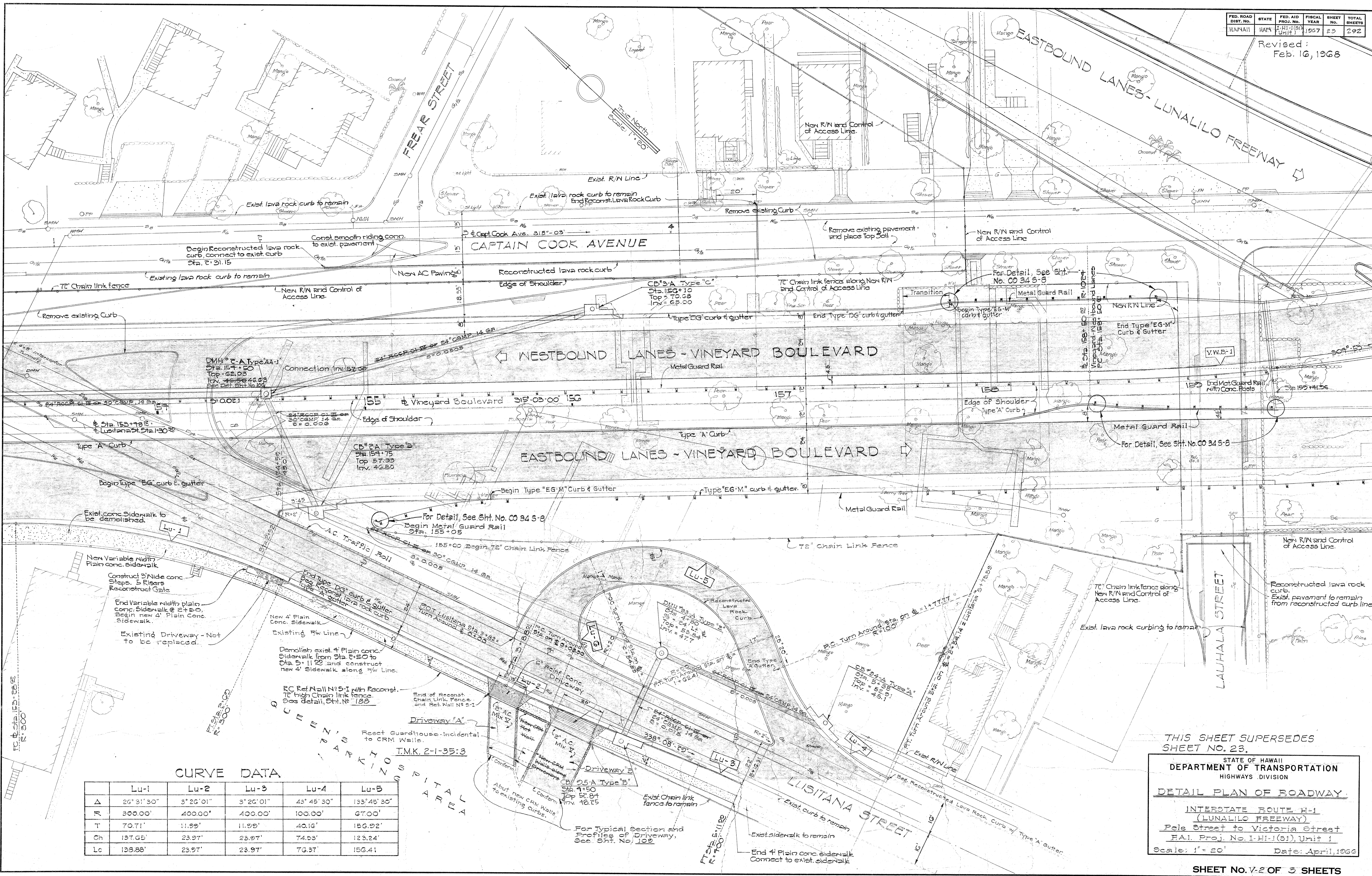
Scale: 1" = 20' Date: April, 1968

SHEET NO. 22 OF 3 SHEETS

THIS SHEET SUPERSEDES SHEET NO. 22.

0022

Revised:
Feb. 16, 1968



CURVE DATA

	Lu-1	Lu-2	Lu-3	Lu-4	Lu-5
Δ	26° 31' 30"	3° 26' 01"	3° 26' 01"	43° 45' 30"	133° 45' 30"
R	300.00'	400.00'	400.00'	100.00'	6700'
T	70.71'	11.99'	11.99'	40.16'	156.92'
Ch	137.65'	23.97'	23.97'	74.53'	123.24'
Lc	138.85'	23.97'	23.97'	76.37'	156.41'

SURVEY PLOTTED BY: _____ DATE: _____
 DESIGNED BY: _____
 DRAWN BY: _____
 QUANTITIES BY: _____
 CHECKED BY: _____
 ORIGINAL PLAN NO. _____
 NOTE BOOK NO. _____

THIS SHEET SUPERSEDES SHEET NO. 23.

STATE OF HAWAII
DEPARTMENT OF TRANSPORTATION
HIGHWAYS DIVISION

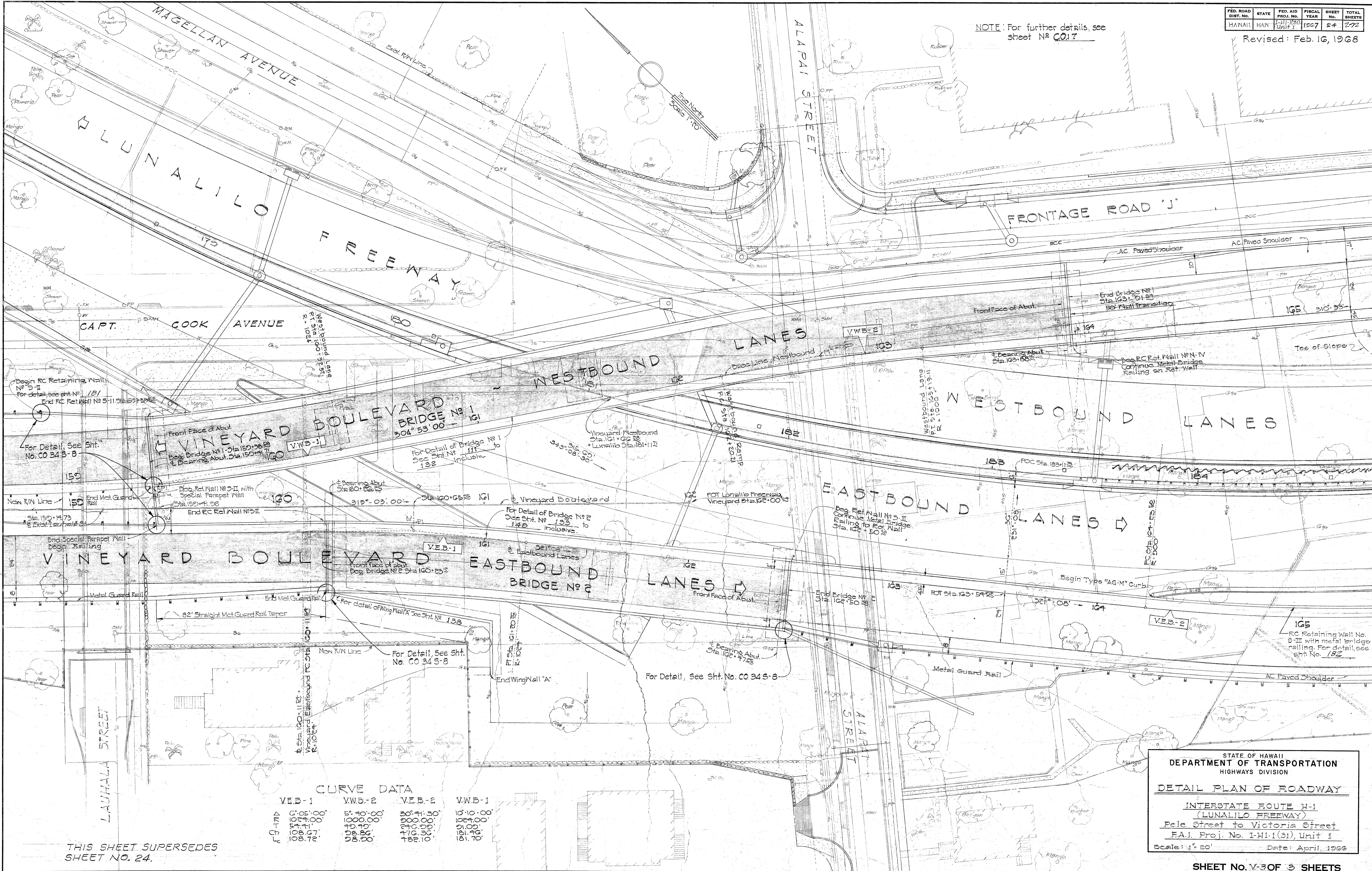
DETAIL PLAN OF ROADWAY

INTERSTATE ROUTE H-1
(LUNALILO FREEWAY)
Pele Street to Victoria Street
F.A.I. Proj. No. I-11-1(91) Unit 1
Scale: 1" = 20' Date: April, 1968

FED. ROAD DIST. NO.	STATE	FED. AID PROJ. NO.	FISCAL YEAR	SHEET NO.	TOTAL SHEETS
HAWAII	HAWAII	1-1(31)	1967	24	272

Revised: Feb. 16, 1968

NOTE: For further details, see sheet No. C017



SURVEY PLOTTED BY	DATE
DESIGNED BY	
DRAWN BY	
QUANTITIES CHECKED BY	
NOTE BOOK	
CHECKED BY	
No.	

CURVE DATA

	V.E.B.-1	V.W.B.-2	V.E.B.-2	V.W.B.-1
PC	177	178	179	180
CB	177.05	178.40	179.41	180.10
PT	177.05	178.40	179.41	180.10
LC	177.05	178.40	179.41	180.10
EC	177.05	178.40	179.41	180.10
SC	177.05	178.40	179.41	180.10
TC	177.05	178.40	179.41	180.10
STATION	108.67	108.72	108.26	108.00
BEARING	304° 53' 00"	315° 03' 00"	302° 41' 30"	304° 53' 00"
ANGLE	108.26	108.00	176.36	181.70
LENGTH	182.10	182.10	182.10	182.10

THIS SHEET SUPERSEDES SHEET NO. 24.

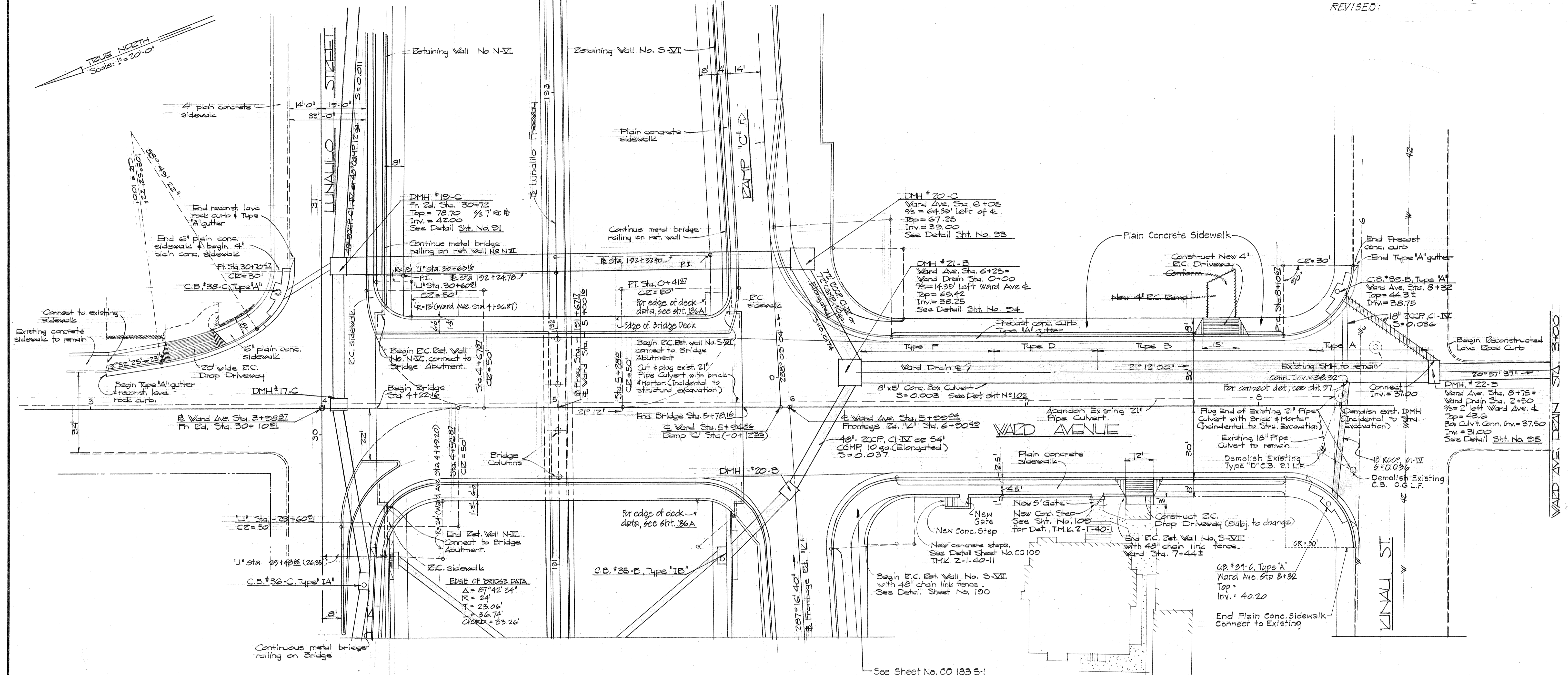
STATE OF HAWAII
DEPARTMENT OF TRANSPORTATION
HIGHWAYS DIVISION
DETAIL PLAN OF ROADWAY
INTERSTATE ROUTE H-1
(LUNALILO FREEWAY)
Fale Street to Victoria Street
F.A.I. Proj. No. I-HI-1(31), Unit 1
Scale: 1" = 20' Date: April, 1968

SHEET No. V-3 OF 3 SHEETS

C017

FED. ROAD DIST. NO.	STATE	FED. AID PROJ. NO.	FISCAL YEAR	SHEET NO.	TOTAL SHEETS
HAWAII	HAW.	I-41-1(31) UNIT 1	1967	25A	292

REVISED: DECEMBER 1967, C.O. NO. 17
REVISED:



DATE	BY
DESIGNED BY	BY
QUANTITIES BY	BY
CHECKED BY	BY
ORIGINAL PLAN	NO.
NOTE BOOK	NO.

4/11/67
REVISION
WARD AVE. & SHIFTER
12-30 West

STATE OF HAWAII
DEPARTMENT OF TRANSPORTATION
HIGHWAYS DIVISION

DETAIL PLAN OF ROADWAY

INTERSTATE ROUTE H-1
(LUNALILO FREEWAY)
Pele Street to Victoria Street
FAI Proj. No. I-41-1(31) Unit 1

Scale: 1" = 20' Date: 4/11/67

SHEET No. OF SHEETS

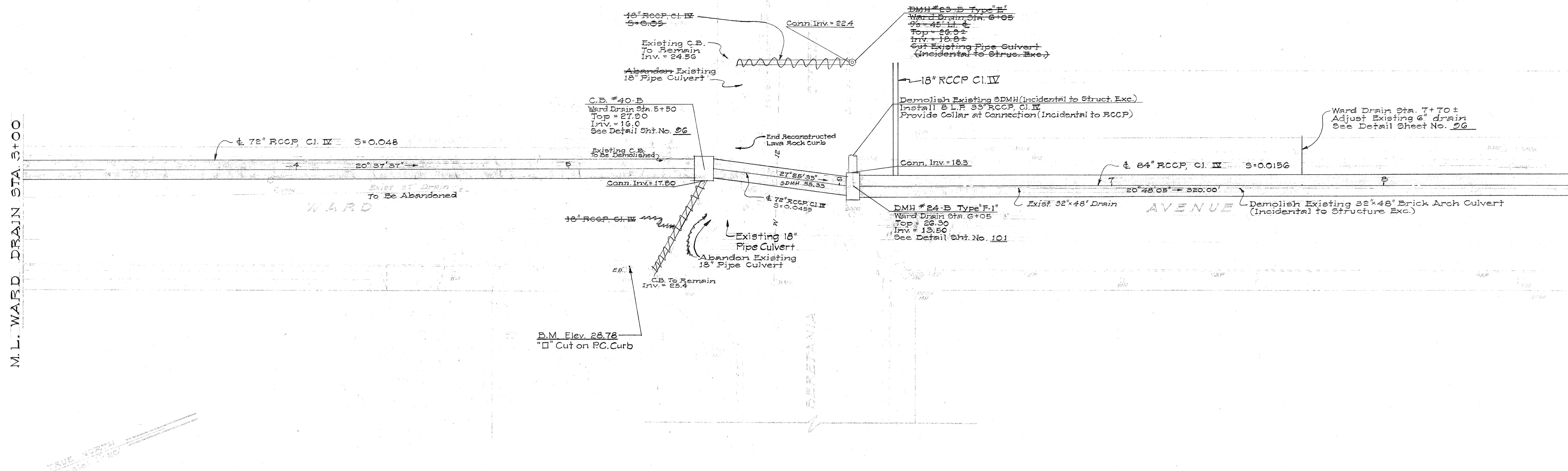
THIS SHEET SUPERSEDE SHEETS NO. 25, & 25A.

25A-1

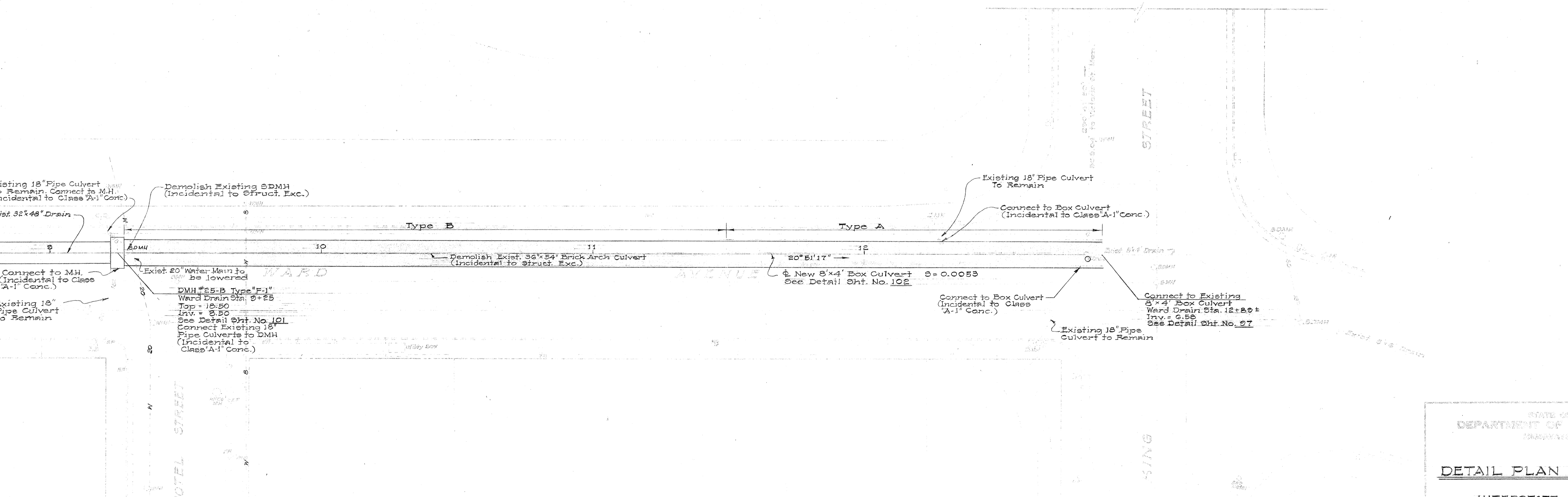
DESIGNER	DATE	SCALE	PROJECT NO.	SHEET NO.	TOTAL SHEETS
REVISION	DATE	BY	DESCRIPTION		

M.L. WARD DRAIN STA. 3+00

M.L. WARD DRAIN STA. 8+75



M.L. WARD DRAIN STA. 6+75



DESIGNED BY	DATE
CHECKED BY	
APPROVED BY	
DATE	

STATE OF HAWAII
DEPARTMENT OF TRANSPORTATION
ROADWAY DIVISION

DETAIL PLAN OF ROADWAY

INTERSTATE ROUTE H-1
(LUNALILO FREEWAY)
Pele Street to Victoria Street
FAL Proj. No. I-HI-1(3) Unit 1

Scale: 1" = 20' Date: April, 1966

SHEET H.W-2 OF 2 SHEETS

26