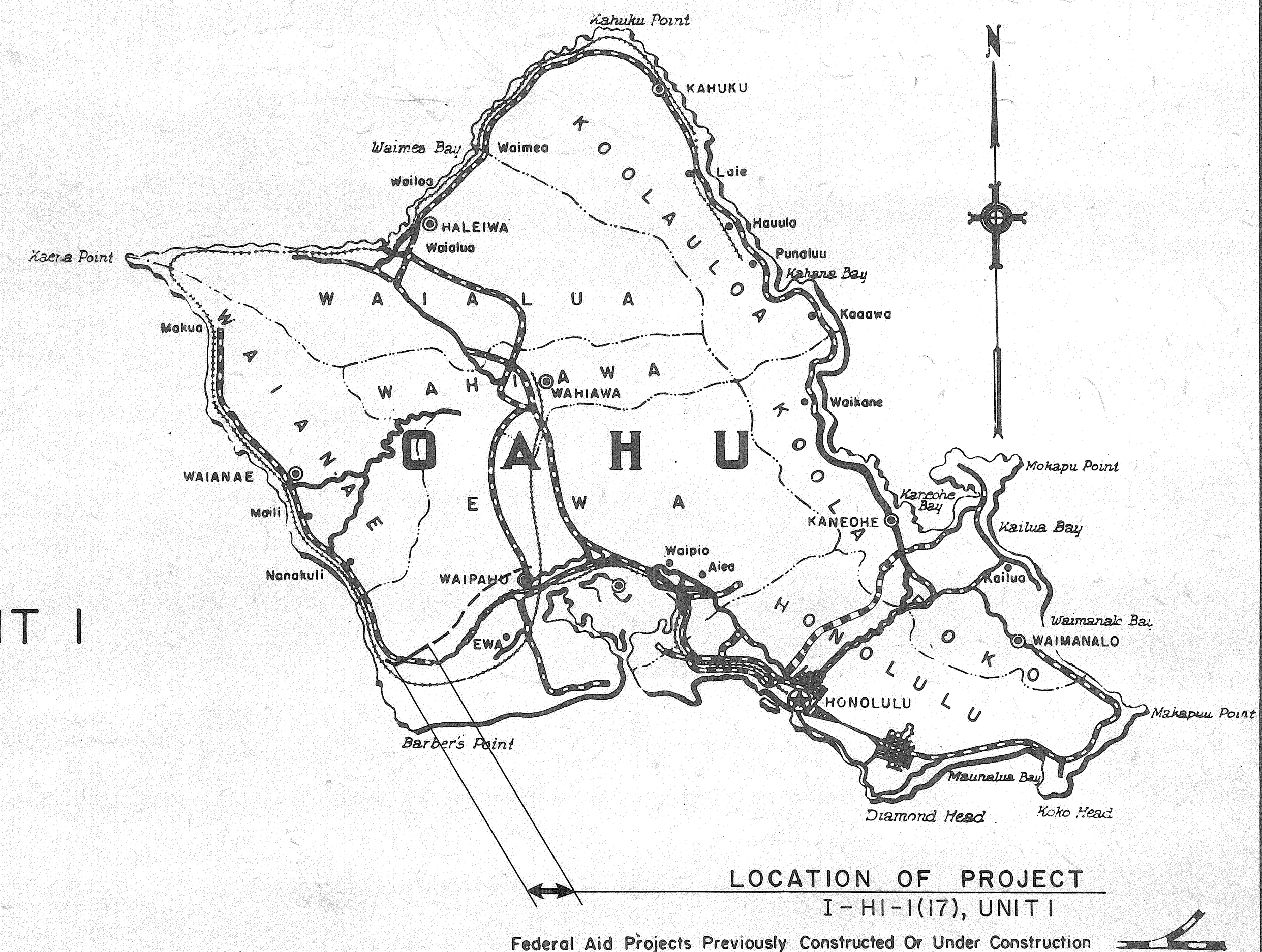


INDEX TO DRAWINGS	
SHT. NO.	DESCRIPTION
1	TITLE SHEET
2 - 7	TYPICAL ROADWAY SECTIONS
8 - 10	PLAN AND PROFILES
11 - 14	DETAIL ROADWAY PLANS
15 - 16	RAMP PROFILES
17	SUPER ELEVATION DIAGRAMS
18 - 19	GRADING PLANS
20 - 29	DETOUR PLAN, TRAFFIC SIGNS AND DETAILS
26 - 30	MISCELLANEOUS ROADWAY DETAILS
31 - 32	HIGHWAY LIGHTING PLANS
34 - 51	UTILITY PLANS AND DETAILS
52 - 69	IRRIGATION PLANS AND DETAILS
70 - 88	DRAINAGE PLANS AND DETAILS
89	SPRINKLER SYSTEM
90 - 116	STRUCTURES AND DETAILS
(90 - 95)	FARRINGTON HWY SEPARATION
(96 - 103)	MAKAKILO NORTH BOUND (OMITTED)
(104 - 108)	
(109 - 116)	TYPICAL & STANDARD DETAILS
117 - 146	CROSS SECTIONS
(117 - 128)	INTERSTATE
(129 - 130)	RAMP CI
(131 - 137)	FARRINGTON HIGHWAY
(138 - 139)	RAMP IF
(140 - 141)	MAKAKILO DRIVE
(142)	RAMP MA
(143 - 146)	RAMP MB
44S	WATER DETAILS
91S	STRUCTURES AND DETAILS

STATE OF HAWAII  
DEPARTMENT OF TRANSPORTATION  
HIGHWAYS DIVISION  
HONOLULU, HAWAII  
"AS BUILT"  
PLANS FOR  
CONSTRUCTION OF A PORTION OF  
**INTERSTATE ROUTE H-1**  
BARBERS POINT TO KUNIA ROAD

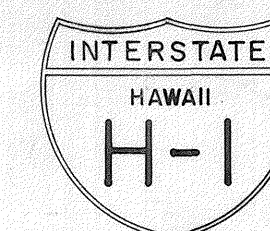
(PALAILAI TO MAKAKILO)  
FEDERAL AID INTERSTATE PROJECT No. I-HI-1(17), UNIT 1  
GRADING AND STRUCTURES

DISTRICT OF EWA  
ISLAND OF OAHU



SCALES:

PLAN & PROFILE	HOR.	1" = 100'
	VER.	1" = 10'
DETAIL ROADWAY PLAN		1" = 50'
CROSS SECTION	HOR.	1" = 10'    1" = 20'
	VER.	1" = 10'    1" = 20'



DESIGN CLASSIFICATION

ADT (1962)	7,100
DESIGN ADT (1985)	25,100
DHV	2,760
D	60/40
T	8 %
V	70 M.P.H.

NOTE:

ALL CHANGES MADE  
DURING CONSTRUCTION  
HAVE BEEN NOTED IN RED  
ON THESE TRACINGS AND  
CHECKED BY

APPROVED DATE 20 Jan 65

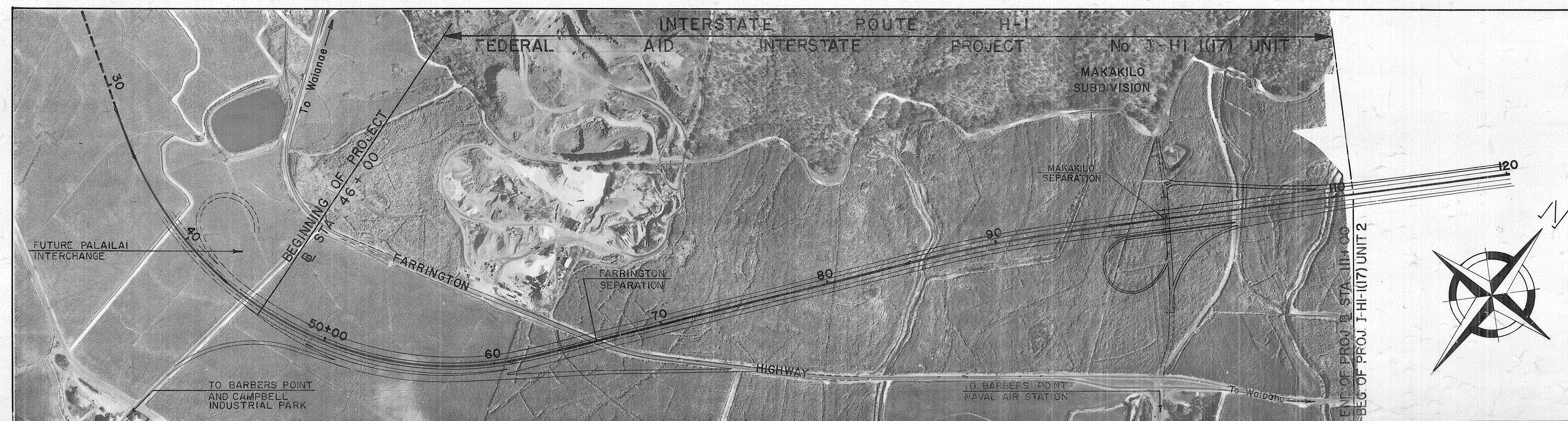
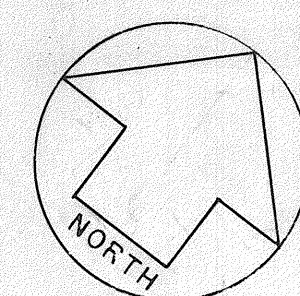
*Luis M. Matamoros*  
DIRECTOR OF TRANSPORTATION

*F. J. Takahara*  
PROJ. ENGR.

DATE 06.12.1967

DEPARTMENT OF COMMERCE  
BUREAU OF PUBLIC ROADS

APPROVED:  
*John B. Dalmon*  
DIVISION ENGINEER DATE Feb 4 1965



LAYOUT PLAN

GROSS LENGTH OF PROJECT	1231 MI
BRIDGES OVER 2000' SPAN	0.000 MI
NET LENGTH OF ROADWAY	1231 MI

DATE	
DESIGNED BY	
DRAWN BY	
CHECKED BY	
NOTED BY	
NO.	