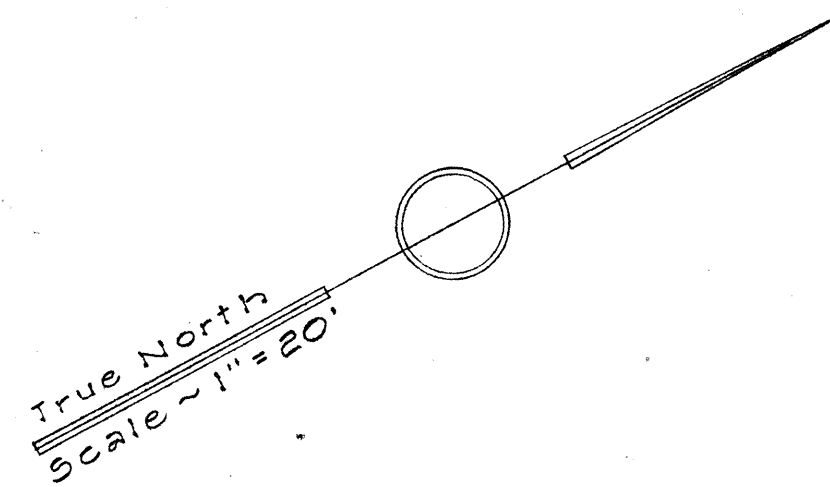


FED. ROAD DIST. NO.	STATE	FED. AID PROJ. NO.	FISCAL YEAR	SHEET NO.	TOTAL SHEETS
HAWAII	HAW.	U-072-1(8)	1959	35	87



KINAU STREET

MATLOCK STREET

KEEAUMOKU STREET

MAKIKI PARK

GENERAL NOTES

1. Installation of water meters and Shut-Off Valves will be made by the C & C Board of Water Supply. Discharge piping to sprinklers including pressure regulators and control valves shall be installed by the contractor. The contractor shall also install copper service laterals and service connections. (See Water Plans)
2. For pavement crossings, copper pipe of sizes shown are to be used.
3. All copper pipes shall be connected with solder type fittings of bronze casting or wrought copper. All pipes other than copper shall be galvanized iron screwed pipes.
4. After complete installation of the sprinkler system, each head shall be adjusted to the satisfaction of the Engineer.
5. Material from the existing sprinkler system to be salvaged may be used in the new system upon approval by the Resident Engineer. Salvaged material not used on the project shall be stockpiled at locations on the project as designated by the Engineer.

LEGEND

	Buckner No.	Thompson No.
⊙ Half Circle	404 H	350 1/2 - 12
○ Full "	403 F	171 - C
◐ Half "	" H	176 - D
◑ Quarter "	" Q	176 1/4 - D
X Full "	400 F	171 - A
V Half "	" H	176 - G
∇ Quarter "	" Q	176 1/4 - G
⊗ Angle Control Valve		
⊕ Shut-Off Valve		

HAWAII STATE HIGHWAY DEPARTMENT
STATE OF HAWAII
SPRINKLER SYSTEM
KEEAUMOKU SEPARATION
PROJ. NO. U-072-1(8)
Scale as noted:

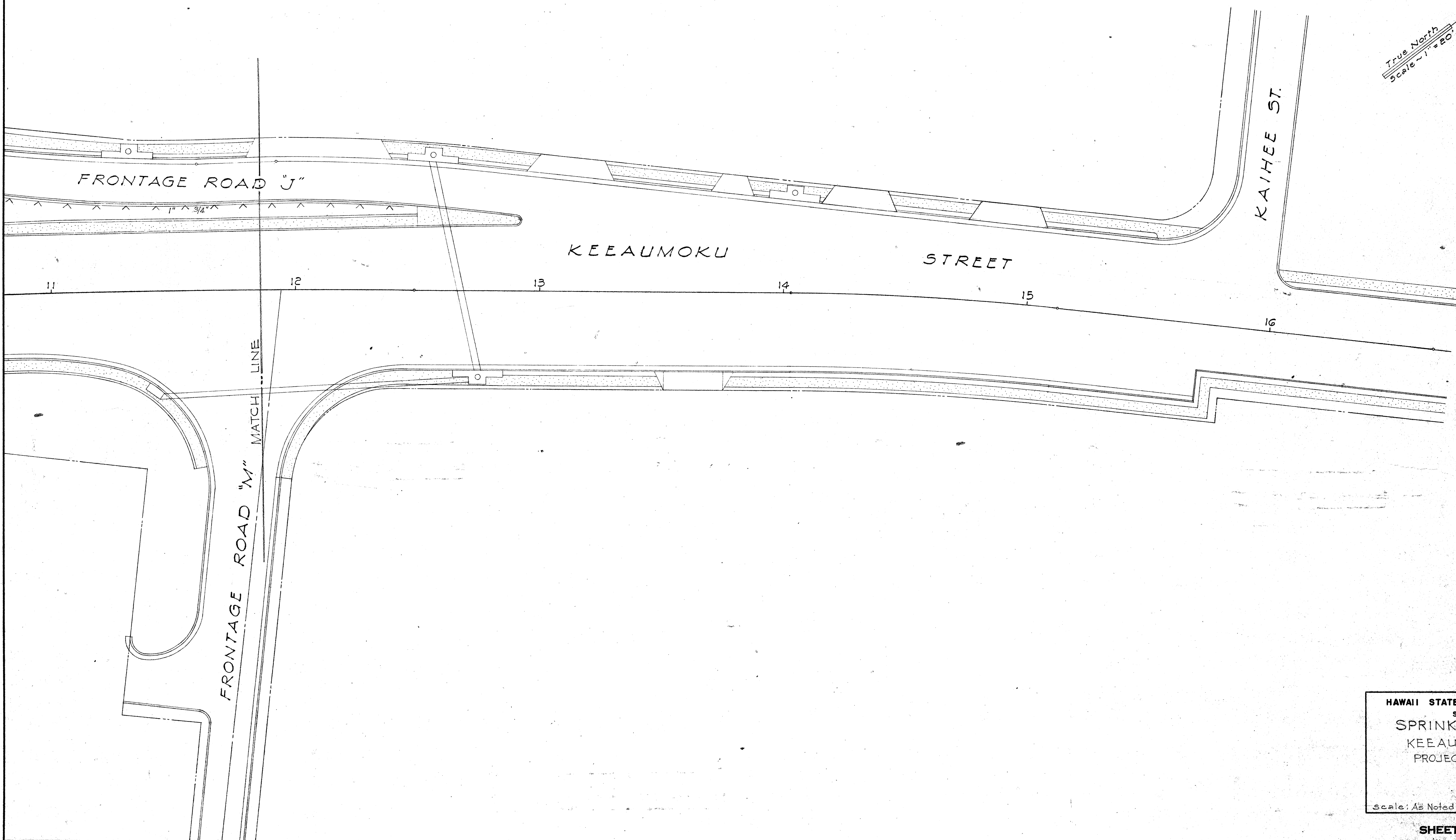
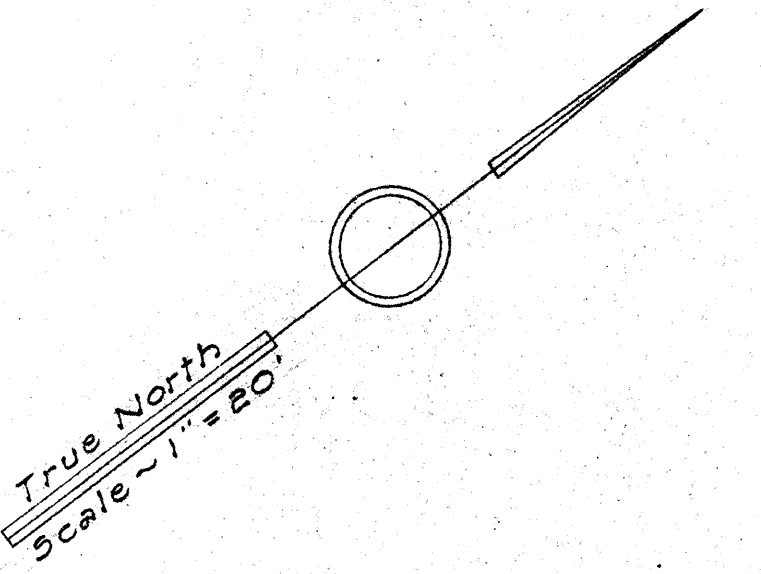
SHEET NO. 1 OF 4 SHEETS

\$183.39

SURVEY PLOTTED BY	DATE
DRAWN BY	
TRACED BY	
QUANTITIES CHECKED BY	
CHECKED BY	
ORIGINAL PLAN	No.

PC 512.0+26.73
R=4500'

FED. ROAD DIST. NO.	STATE	FED. AID PROJ. NO.	FISCAL YEAR	SHEET NO.	TOTAL SHEETS
HAWAII	HAW	U-072-108	1959	41	81

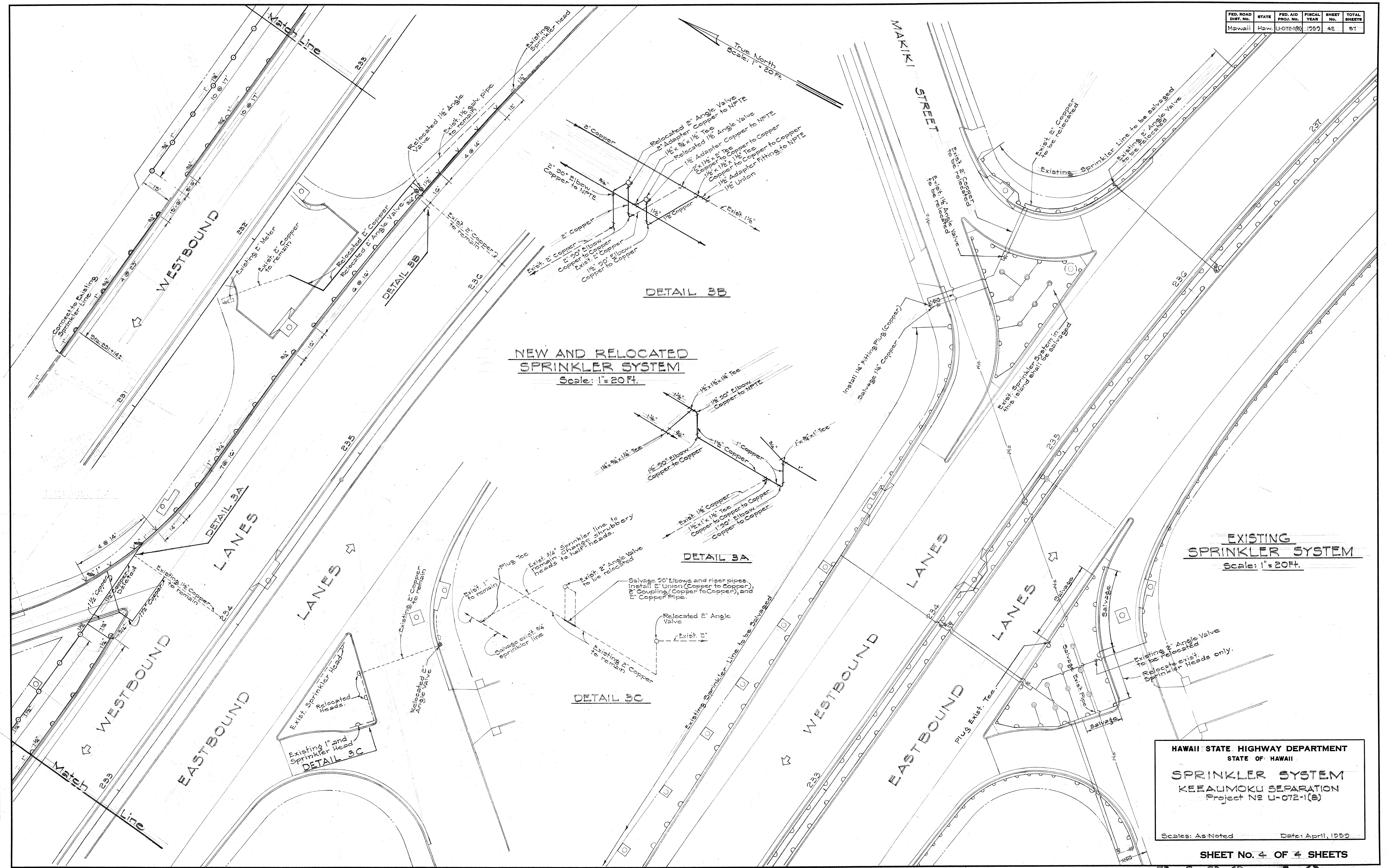


ORIGINAL PLAN	NO.
SURVEY PLOTTED BY	DATE
DESIGNED BY	
DRAWN BY	
CHECKED BY	
QUANTITIES CHECKED BY	
CHECKED BY	

HAWAII STATE HIGHWAY DEPARTMENT
STATE OF HAWAII
SPRINKLER SYSTEM
KEEAUMOKU SEPARATION
PROJECT NO. U-072-1(8)
Scale: As Noted

FED. ROAD DIST. NO.	STATE	FED. AID PROJ. NO.	FISCAL YEAR	SHEET NO.	TOTAL SHEETS
Hawaii	Haw.	U-072-1(8)	1959	42	87

SURVEY PLOTTED BY	DATE
DESIGNED BY	
DRAWN BY	
CHECKED BY	
NOTE BOOK	
CHECKED BY	



HAWAII STATE HIGHWAY DEPARTMENT
STATE OF HAWAII

SPRINKLER SYSTEM
KEEAUMOKU SEPARATION
Project N2 U-072-1(8)

Scales: As Noted Date: April, 1959

\$183.42