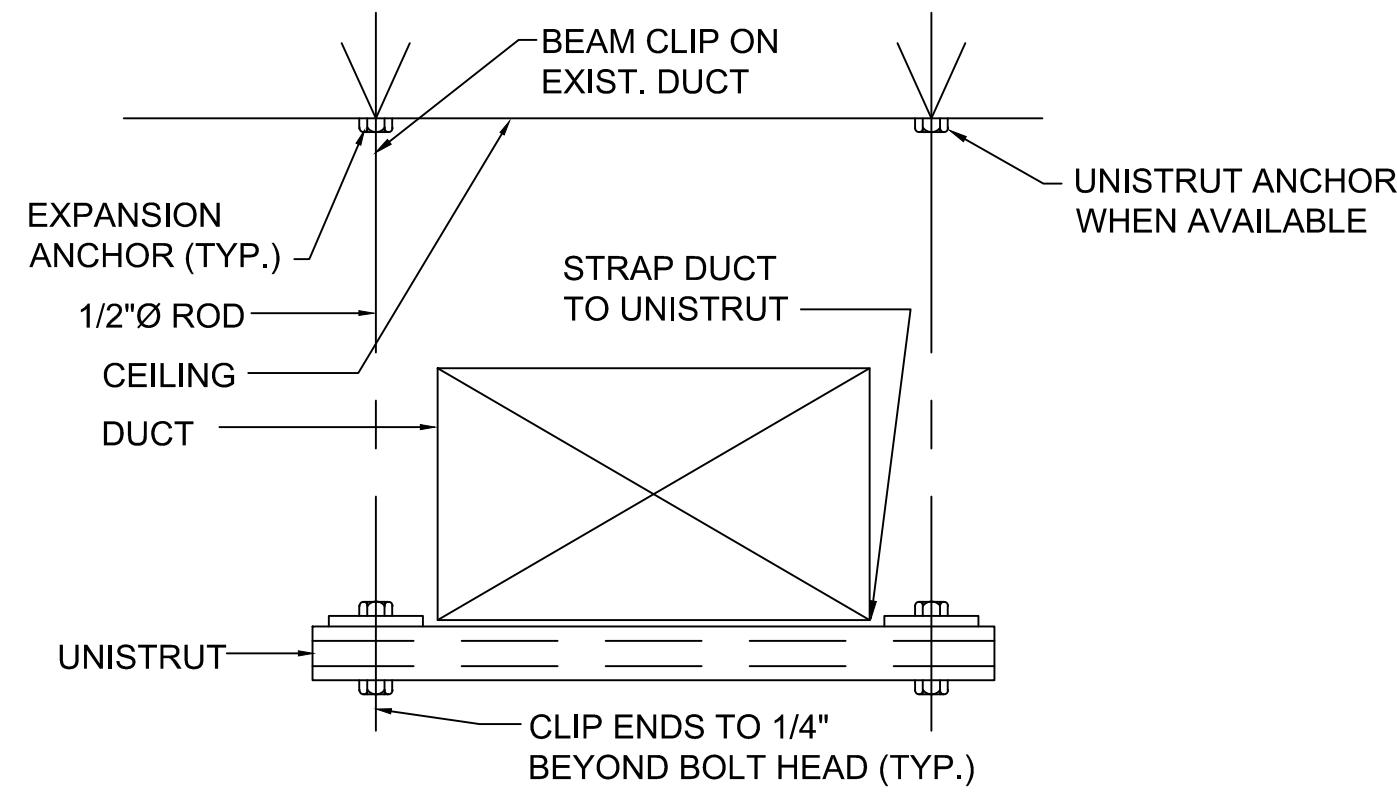
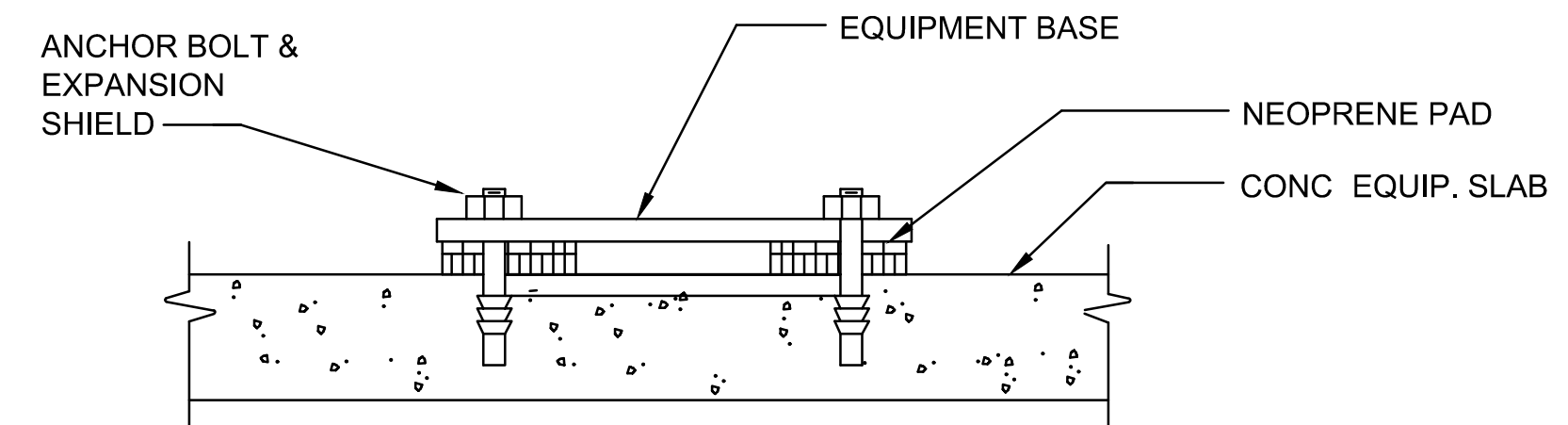


1 ACCU-DOAS REFRIGERANT PIPING DIAGRAM  
NOT TO SCALE

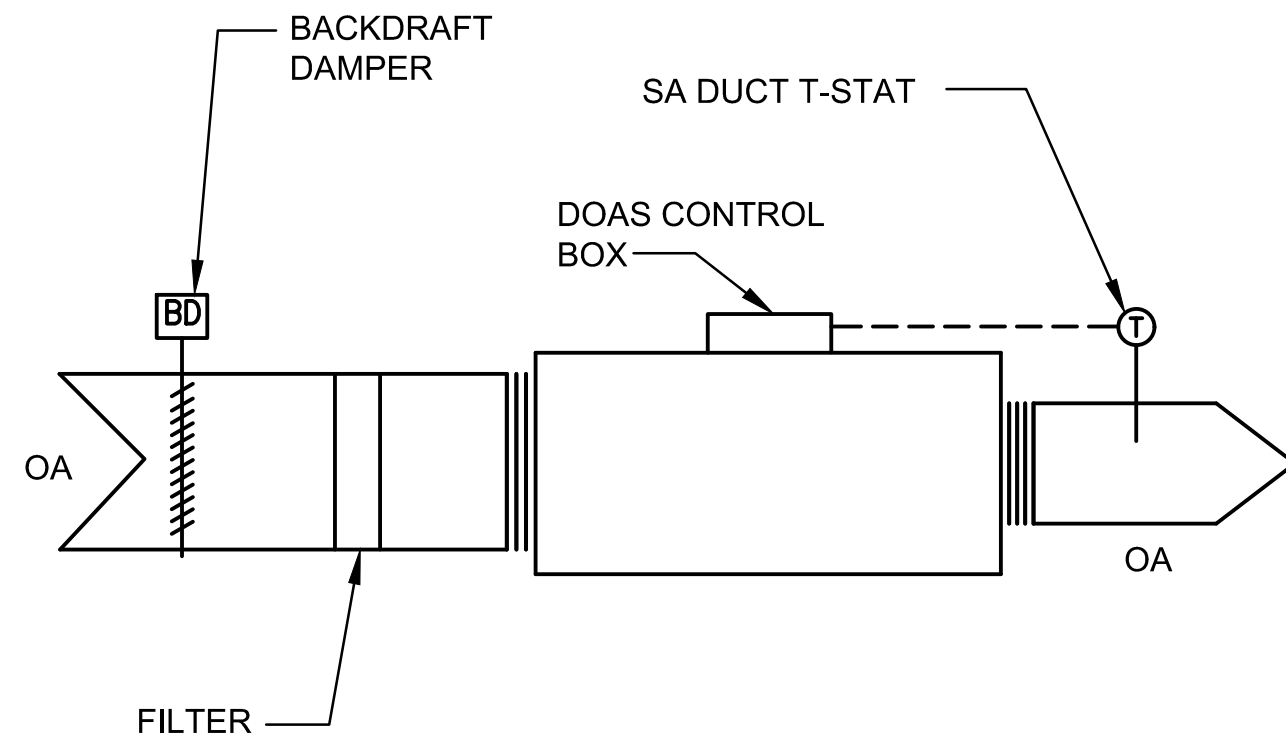


NOTE: PROVIDE DUCT SUPPORT EVERY 4 FT.

2 TYPICAL DUCT SUPPORT DETAIL  
SCALE: NOT TO SCALE



3 TYPICAL ACCU SUPPORT DETAIL  
NOT TO SCALE

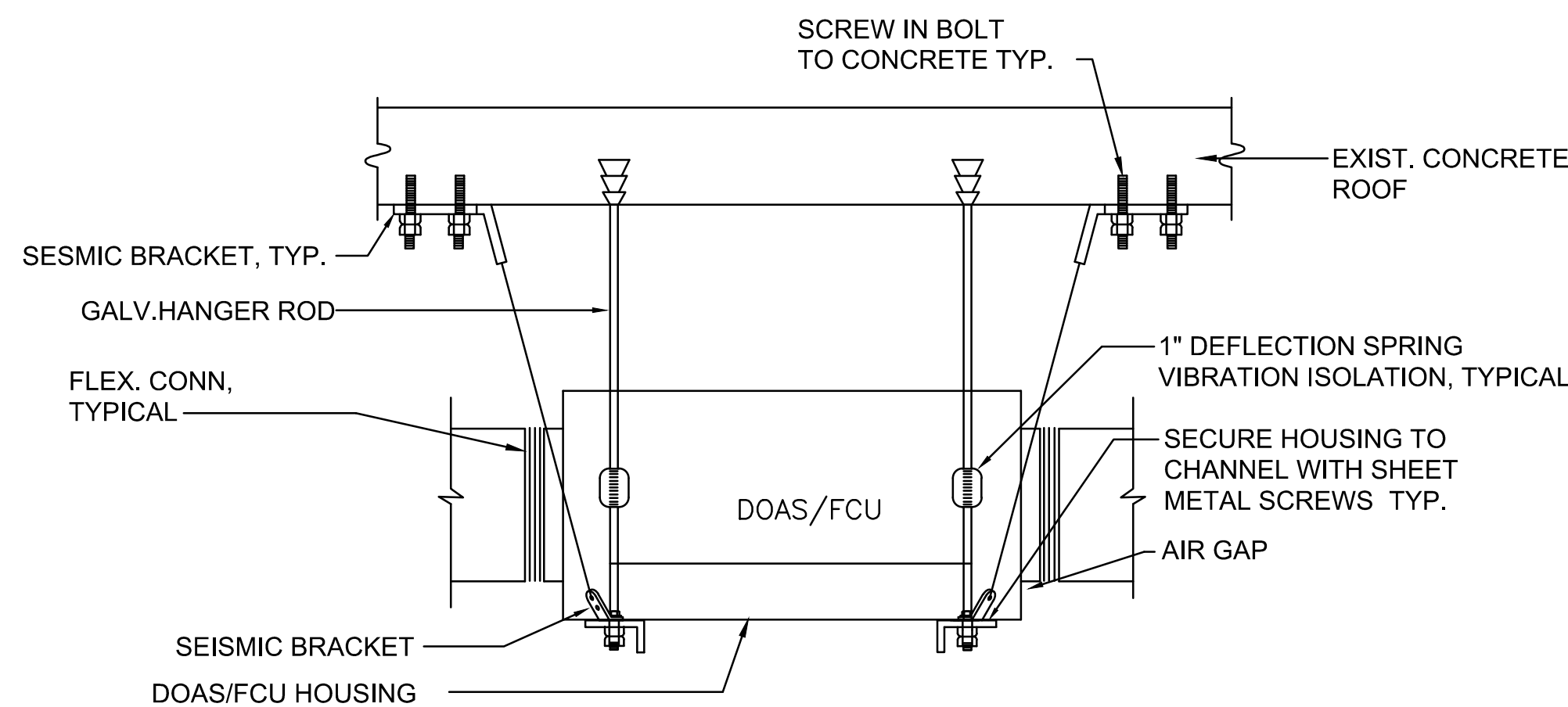


SEQUENCE OF OPERATIONS:

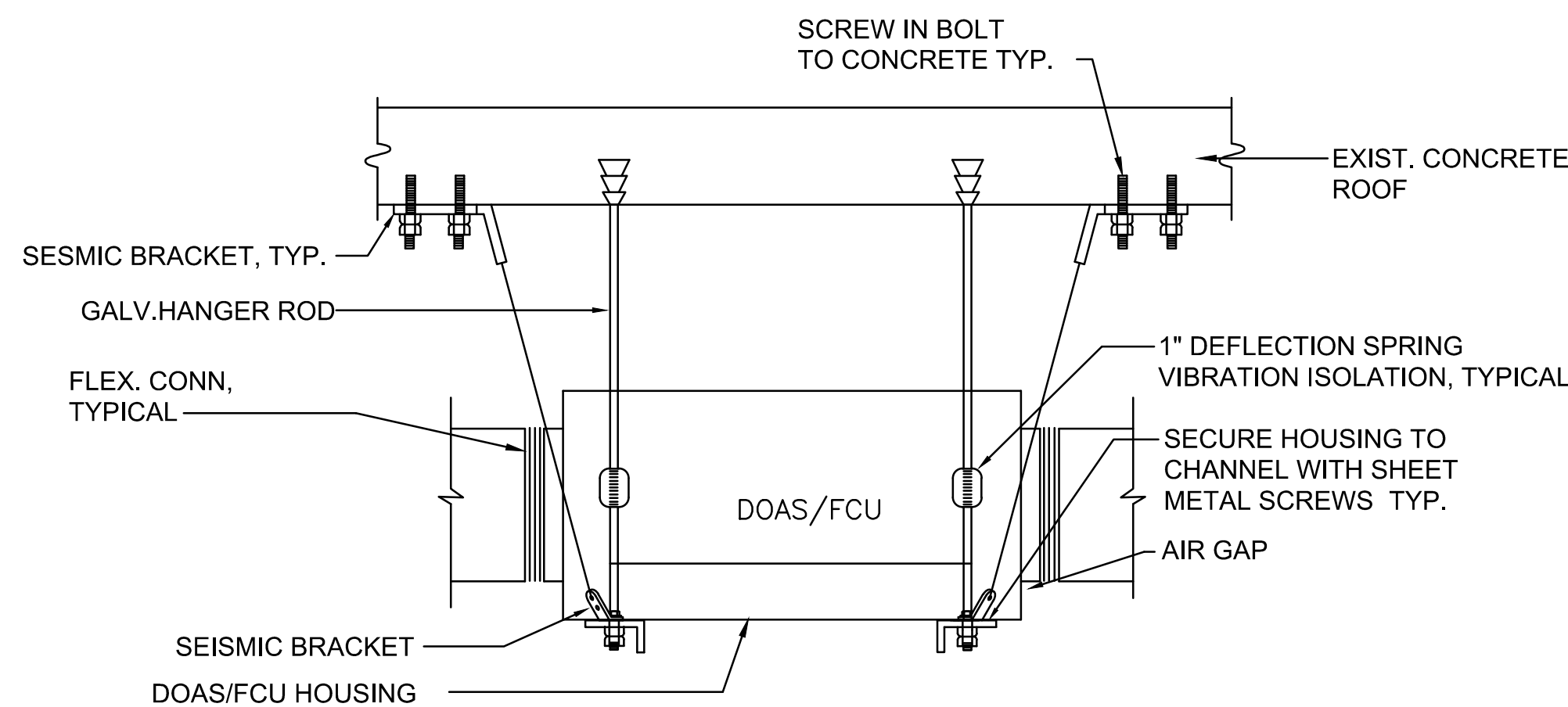
DEDICATED OUTDOOR AIR SYSTEM UNIT

1. THE DEDICATED OUTDOOR AIR SYSTEMS SHALL HAVE A FULLY ADJUSTABLE PROGRAMMABLE CONTROLLER IN THE SPACE. DOAS-1 SHALL OPERATE FOR DAILY OCCUPANT USE.
2. THE OUTDOOR AIR CONTROLLER TEMPERATURE SETTING SHALL BE FIXED TO THE MINIMUM SETTING. THE OA DUCT TEMPERATURE SENSOR SHALL MODULATE THE REFRIGERANT FLOW TO MAINTAIN THE SA TEMPERATURE AT 55 F.

4 TYPICAL DOAS SCHEMATIC DIAGRAM  
SCALE: NOT TO SCALE

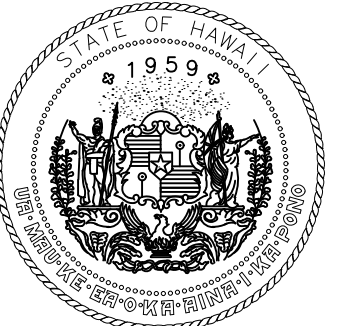


5 TYPICAL VERTICAL PIPE MOUNTING DETAIL  
NOT TO SCALE

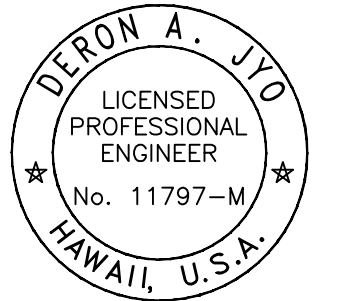


NOTE: TYP. FOR ALL CEILING MOUNTED DOAS/FCU  
SEISMIC CABLE PROVIDE SLACK, TYP.

6 DOAS/FCU MOUNTING DETAIL  
NOT TO SCALE



Airports Division  
DEPARTMENT OF TRANSPORTATION  
STATE OF HAWAII



04/30/2024

*Deron A. Jyo*  
This work was prepared by me or under my supervision.

DSGN.	DRWN.	CHKD.	APPD.

NO.	DATE	REVISIONS
-----	------	-----------

**FINAL  
SUBMITTAL**

09/30/22  
DATE

PROJECT TITLE :

**AIR TRAFFIC CONTROL  
TOWER REPAIRS**

AT  
KALAELOA AIRPORT  
BARBERS POINT, OAHU, HAWAII

PROJECT NO.:

**AO5024-03**

SHEET TITLE:

**MECHANICAL DETAILS**

DATE :	DWG. NO.
9/30/22	<b>M502</b>
SHEET :	
44 OF 49 SHEET	