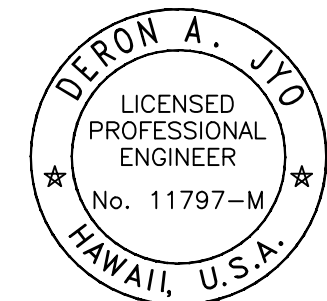




Airports Division  
DEPARTMENT OF TRANSPORTATION  
STATE OF HAWAII



04/30/2024

*Deron A. Jyo*  
This work was prepared by me or under my supervision.

DSGN.	DRWN.	CHKD.	APPD.
-------	-------	-------	-------

NO.	DATE	REVISIONS
-----	------	-----------

**FINAL  
SUBMITTAL**

09/30/22  
DATE

PROJECT TITLE :

**AIR TRAFFIC CONTROL  
TOWER REPAIRS**

AT  
KALAELOA AIRPORT  
BARBERS POINT, OAHU, HAWAII

PROJECT NO.:

**AO5024-03**

SHEET TITLE:

**AIR TRAFFIC CONTROL  
TOWER, 3RD LEVEL  
MECHANICAL  
REMOVAL PLAN**

DATE :	DWG. NO.
9/30/22	<b>MD105</b>
SHEET :	
39 OF 49 SHEET	

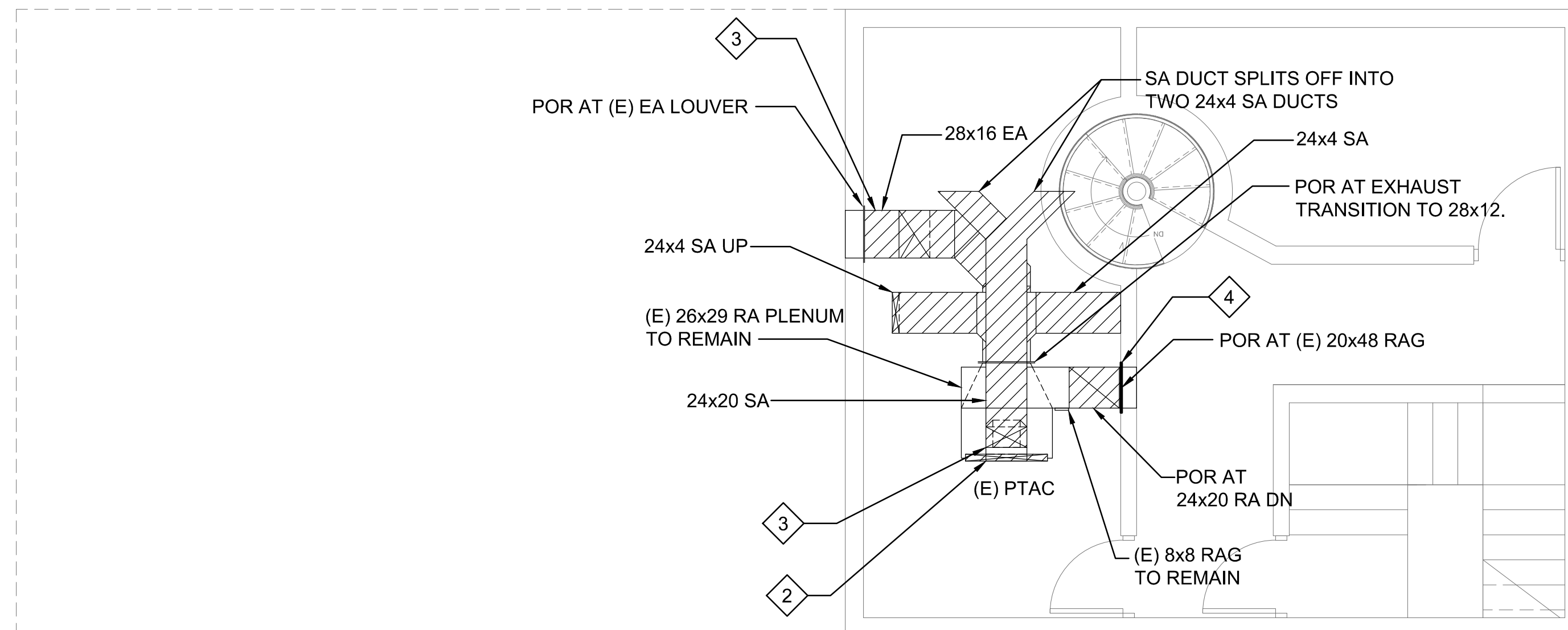
MECHANICAL GENERAL NOTES

THE SCOPE OF WORK INVOLVES REPLACING THE EXISTING DUCTWORK CONNECTED TO THE PTAC UNIT. PORTIONS OF THE DUCTWORK WAS RECENTLY INSTALLED WHEN THE PTAC UNIT WAS REPLACED. THESE PORTIONS ARE TO REMAIN.

NO AS-BUILTS WERE PROVIDED. THE FLOOR PLAN SHOWN WAS GENERATED FROM SITE OBSERVATIONS AND FIELD MEASUREMENTS.

MECHANICAL DEMOLITION WORK NOTES

- 1 REMOVE EXISTING CONDENSER EA DUCT UP TO POR. POR FROM THE EA LOUVER TO THE 28X12 DUCT TRANSITION.
- 2 REMOVE EXISTING SA DUCT UP TO POR. POR FROM THE CEILING TO THE 24X4 ELBOW.
- 3 REMOVE EXISTING SA DUCT UP TO POR, POR FROM THE CEILING AND WALL TO THE 24X12 ELBOW.
- 4 REMOVE EXISTING RA DUCT UP TO POR. POR FROM THE THE ELBOW TO THE 20X48 RAG. EXISTING RAG TO REMAIN.



AIR TRAFFIC CONTROL TOWER 3RD LEVEL MECHANICAL REMOVAL PLAN

SCALE: 1/4" = 1'-0"

