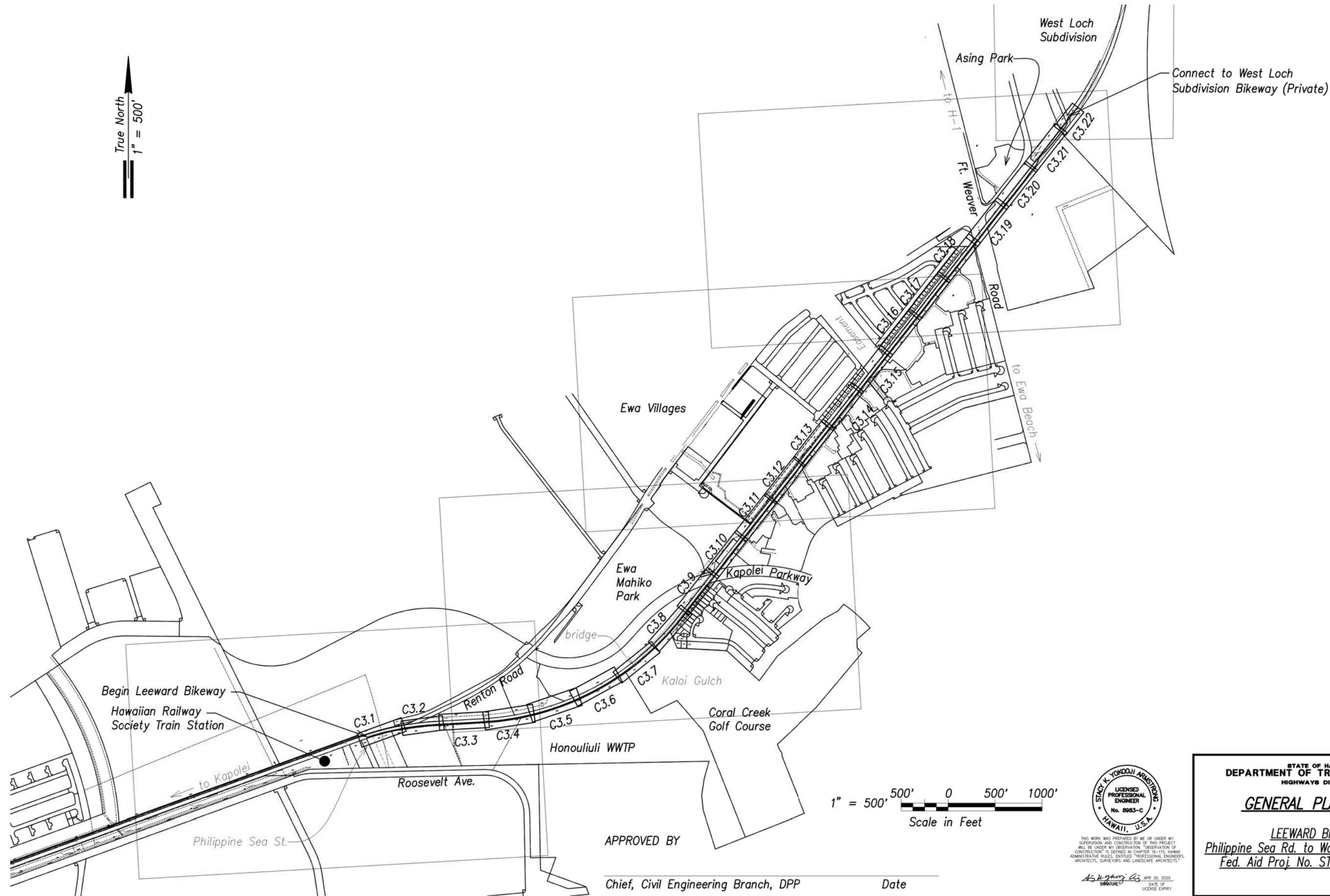


FED. ROAD DIST. NO.	STATE	FED. AID PROJ. NO.	FISCAL YEAR	SHEET NO.	TOTAL SHEETS
HAWAII	HAW.	STP-BW-0300(8)	2019	14	171

True North
1" = 500'



SURVEY PLOTTED BY	DATE
DRAWN BY	
DESIGNED BY	
QUANTITIES BY	
CHECKED BY	
ORIGINAL PLAN	
NOTE BOOK	
No.	

APPROVED BY

Chief, Civil Engineering Branch, DPP

Date

1" = 500' 500' 0 500' 1000'
Scale in Feet



THIS WORK WAS PREPARED BY ME OR UNDER MY SUPERVISION AND CONSTRUCTION OF THIS PROJECT WILL BE UNDER MY OBSERVATION. OBSERVATION OF CONSTRUCTION IS DEFINED IN CHAPTER 18-115, HAWAII ADMINISTRATIVE RULES, ENTITLED "PROFESSIONAL ENGINEERS, ARCHITECTS, SURVEYORS AND LANDSCAPE ARCHITECTS."

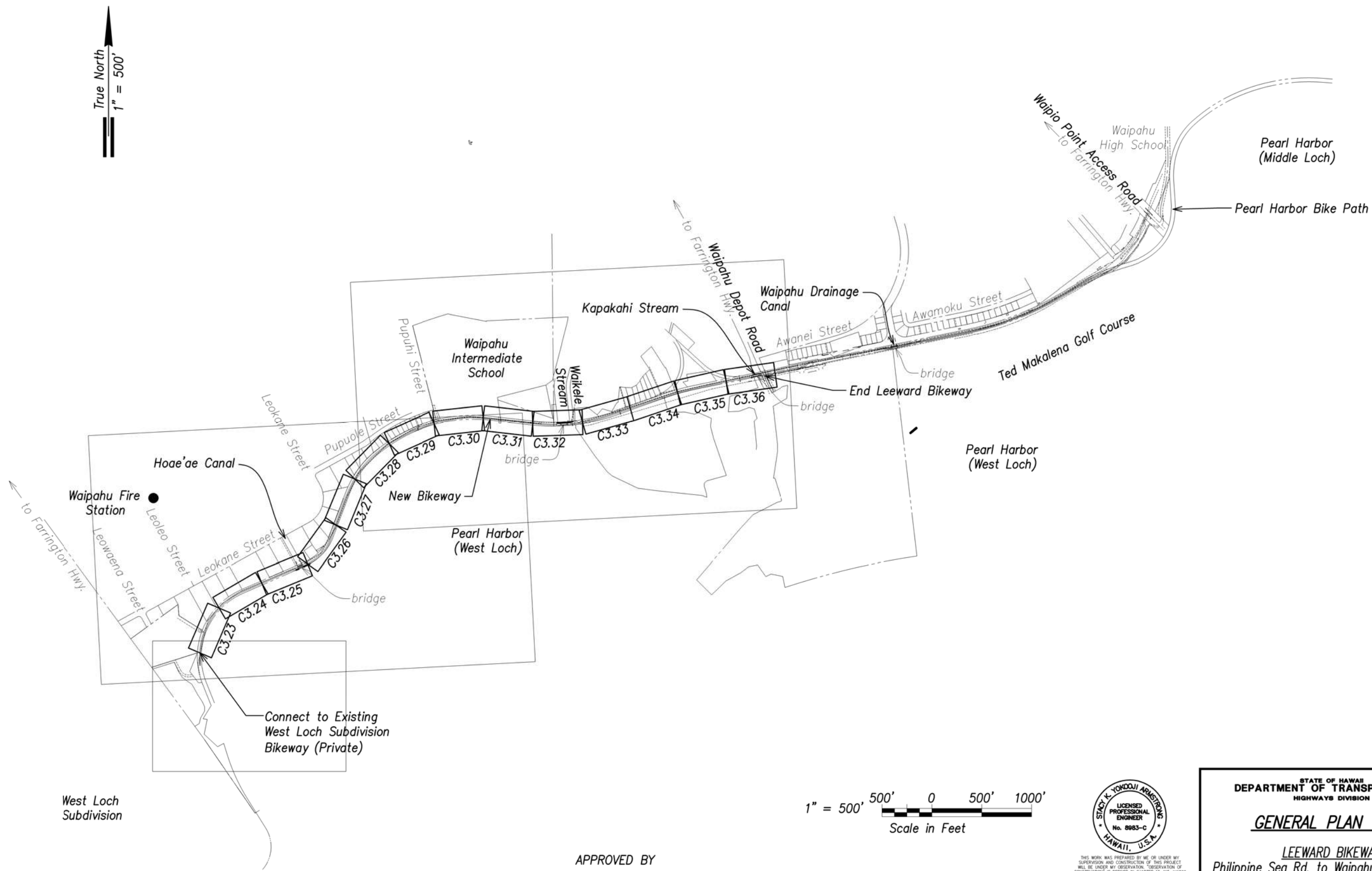
APR 30, 2020
DATE OF LICENSE EXPIRY

STATE OF HAWAII
DEPARTMENT OF TRANSPORTATION
HIGHWAYS DIVISION

GENERAL PLAN - 1
LEeward BIKEWAY
Philippine Sea Rd. to Waipahu Depot Street
Fed. Aid Proj. No. STP-BW-0300(8)

Date: July 1, 2019
SHEET No.C0.13 OF 14 SHEETS

FED. ROAD DIST. NO.	STATE	FED. AID PROJ. NO.	FISCAL YEAR	SHEET NO.	TOTAL SHEETS
HAWAII	HAW.	STP-BW-0300(8)	2019	15	171

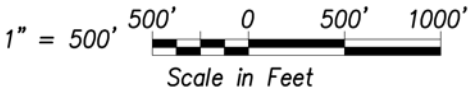


SURVEY PLOTTED BY	DATE
DRAWN BY	
DESIGNED BY	
CHECKED BY	
NOTE BOOK	
No.	

APPROVED BY

Chief, Civil Engineering Branch, DPP

Date



STATE OF HAWAII
DEPARTMENT OF TRANSPORTATION
HIGHWAYS DIVISION
GENERAL PLAN - 2
LEeward BIKEWAY
Philippine Sea Rd. to Waipahu Depot Street
Fed. Aid Proj. No. STP-BW-0300(8)
Date: July 1, 2019
SHEET No.C0.14 OF 14 SHEETS